

TO: Arts & Sciences Division
FROM: Dr. G. Gordon Gregory, Dean of Undergraduate Education
DATE: October 22, 2008
RE: SUMMA Observations & Recommendations

The Committee for Institutional Research & Assessment (CIRA) was asked to look at the aggregate data from the 2007/2008 SUMMA Summaries. The CIRA has compiled the following data along with initial observations and recommendations concerning the Division of the Arts & Sciences. Please note that SUMMA does not indicate whether variances on individual items are statistically significant. Therefore, all variances referenced are presented for the sake of putting comparisons into perspective.

See accompanying Arts & Sciences Division SUMMA Summaries Comparisons.

Celebration Points

1. Arts & Sciences Division scored above 4.50 on the following:
 - Clarity and audibility of instructor's speech (#1), 4.52
 - Adequate opportunity to ask questions (#7), 4.56
 - Instructor committed to high professional competence (#16), 4.56
 - Instructor cares about my learning (#10), 4.54
2. Arts & Sciences Division scored above the national norm on 5 of the 22 items. Of the remaining 17, they scored within .10 of the national mean on 5 of them.

General Observations

From 2002 to 2007, the Arts & Sciences Division made great strides in all six factor areas. And while LBC declined across the board from 2007 to 2008, of concern is the steeper declines the Arts & Sciences Division took in the areas of **Course Objectives, Course Assignments, Testing, and Instructor Preparation & Organization.**

General Considerations

It should be noted that the divisional summaries include not only adjuncts from outside LBC but also LBC instructors that teach courses across the divisions. Since these would be included as "full-time" faculty, it disguises the fact that they are teaching just one or two courses in that division.

General Recommendations

Individual instructors should examine their own SUMMA score for each of the items to determine if this is an issue they should address individually.

The division may want to set aside some time in their monthly meetings to brainstorm possible causes of the steeper declines in the areas of **Course Objectives, Course Assignments, Testing, and Instructor Preparation & Organization.**

Six Factors

ARTS & SCIENCES Division SUMMA Summaries Comparisons

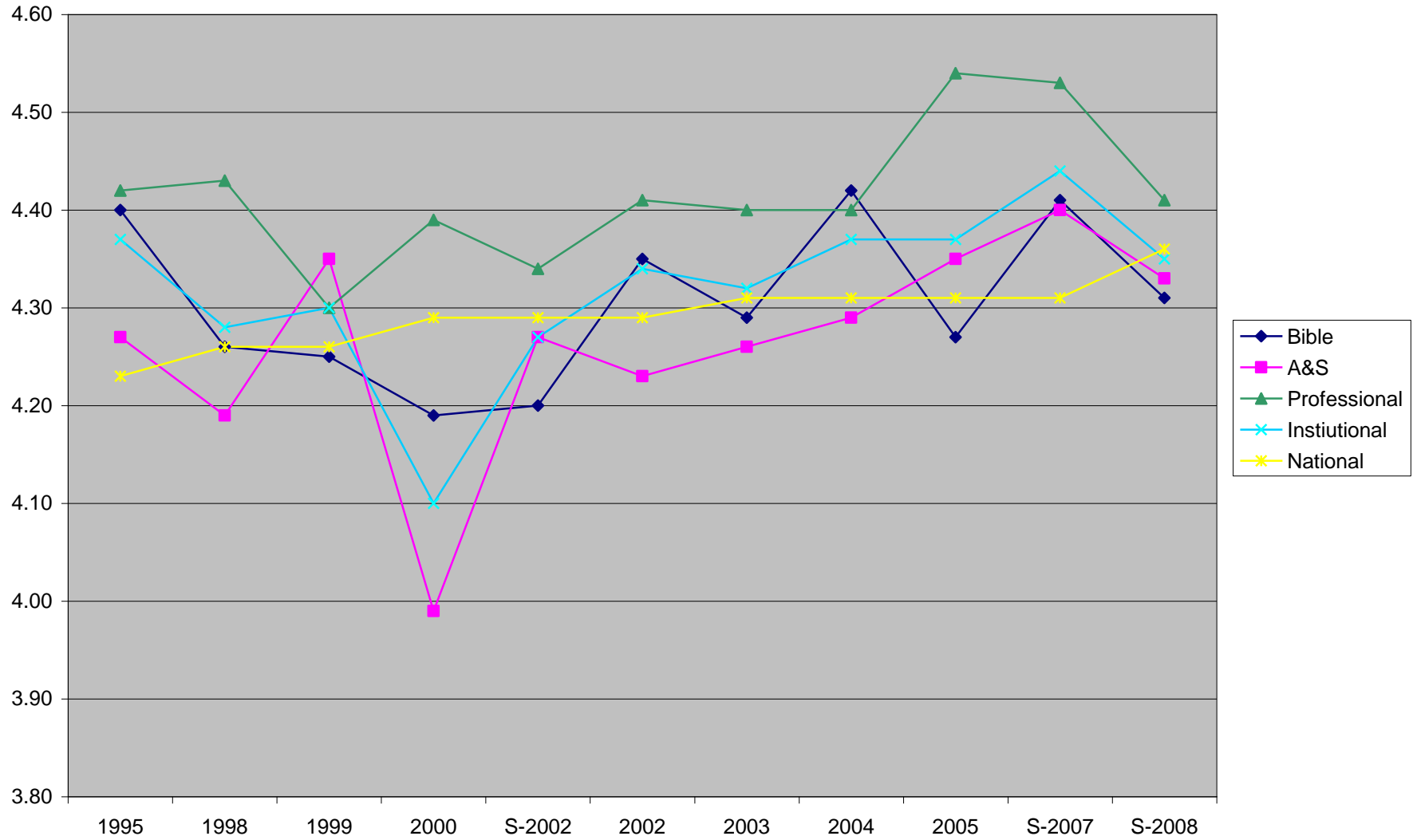
Instructor Commitment to Student Learning	2005 A&S	2007 A&S	Incr/ Decr	2008 A&S	Incr/ Decr	2005 LBC	2007 LBC	Incr/ Decr	2008 LBC	Incr/ Decr	2008 A&S Over/ Under LBC	2008 National Mean	2008 A&S Over/ Under National
1. Clarity and audibility of instructor's speech	4.46	4.44	-0.02	4.52	0.08	4.51	4.57	0.06	4.56	-0.01	-0.04	4.49	0.03
7. Adequate opportunity to ask questions	4.60	4.64	0.04	4.56	-0.08	4.63	4.66	0.03	4.60	-0.06	-0.04	4.53	0.03
8. Instructor teaches clearly	4.37	4.35	-0.02	4.28	-0.07	4.40	4.45	0.05	4.35	-0.10	-0.07	4.32	-0.04
10. Instructor cares about my learning	4.50	4.60	0.10	4.54	-0.06	4.50	4.65	0.15	4.54	-0.11	0.00	4.43	0.11
16. Instructor committed to high professional competence	4.53	4.62	0.09	4.56	-0.06	4.56	4.66	0.10	4.57	-0.09	-0.01	4.44	0.12
17. Instructor gives useful feedback	3.97	4.08	0.11	3.93	-0.15	3.92	3.98	0.06	3.87	-0.11	0.06	4.10	-0.17
20. Instructor helps without taking over	4.12	4.23	0.11	4.07	-0.16	4.15	4.22	0.07	4.06	-0.16	3.01	4.21	-0.15
21. Instructor relates theory to practice	4.19	4.23	0.04	4.14	-0.09	4.29	4.35	0.06	4.22	-0.13	-0.08	4.29	-0.15

- Despite a decline this past year, the Arts & Sciences Division falls very close to the LBC means and fairly close to the national means for **Instructor Commitment to Student Learning**.

Recommendations: While the overall average of this factor places the division close to the national mean, some consideration should be given to why items #17, #20, and #21 are farther below the national means

Divisional comments, observations, recommendations: _____

INSTRUCTOR COMMITMENT to STUDENT LEARNING



ARTS & SCIENCES Division SUMMA Summaries Comparisons

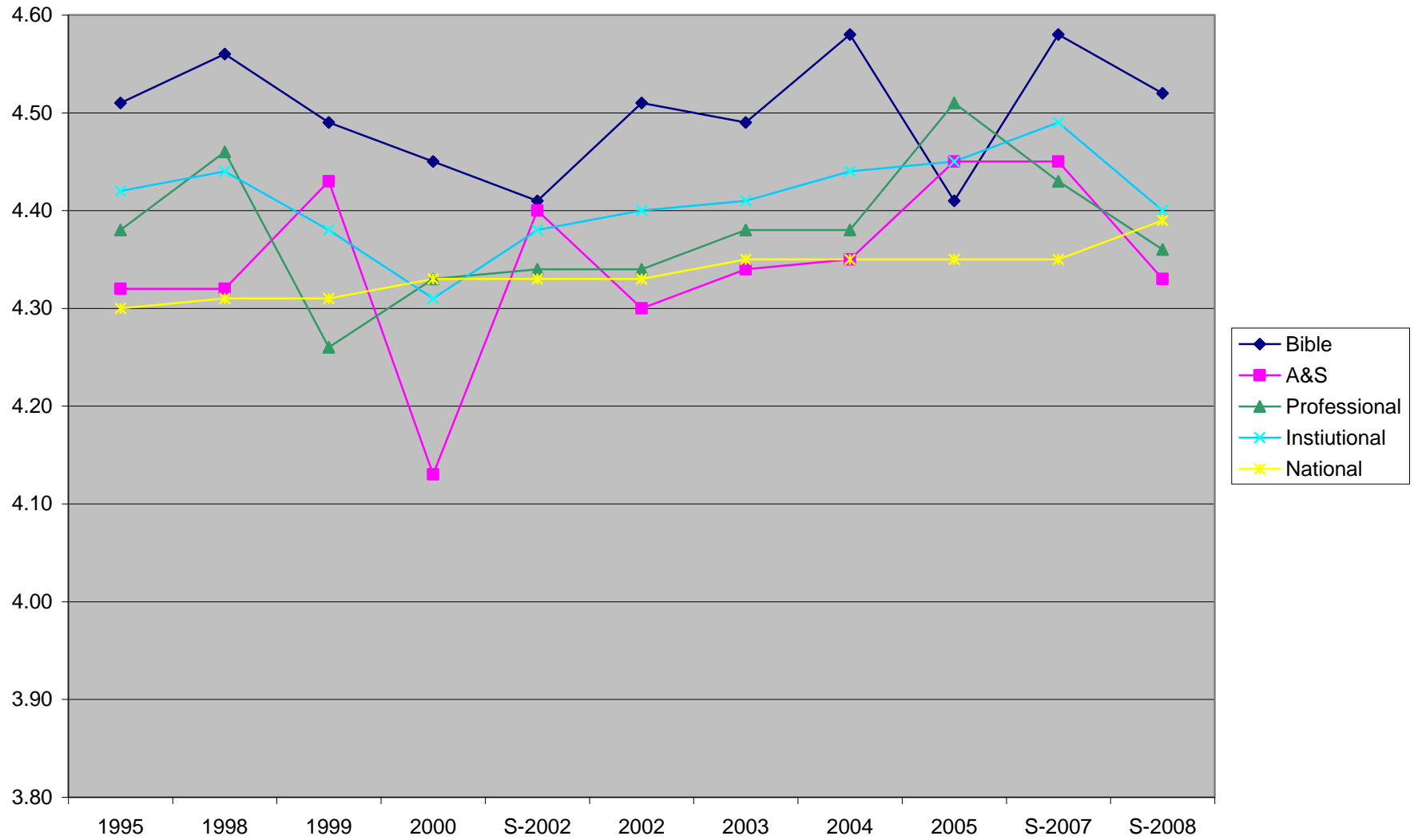
Instructor Preparation and Organization	2005 A&S	2007 A&S	Incr/ Decr	2008 A&S	Incr/ Decr	2005 LBC	2007 LBC	Incr/ Decr	2008 LBC	Incr/ Decr	2008 A&S Over/ Under LBC	2008 National Mean	2008 A&S Over/ Under National
3. Course requirements explained fully	4.23	4.19	-0.04	4.16	-0.03	4.29	4.31	0.02	4.26	-0.05	-0.10	4.35	-0.19
9. Instructor seems well prepared	4.65	4.67	0.02	4.50	-0.17	4.61	4.65	0.04	4.55	-0.10	-0.05	4.46	0.04
11. Course appears well planned	4.46	4.50	0.04	4.33	-0.17	4.46	4.51	0.05	4.37	-0.14	-0.04	4.35	-0.02

- Despite a decline this past year, the Arts & Sciences Division falls very close to the LBC and the national means for **Instructor Preparation and Organization**.

Recommendations: Of some concern might be the specific item #3 “Course requirements explained fully” which the division may want to discuss.

Divisional comments, observations, recommendations: _____

INSTRUCTOR PREPARATION and ORGANIZATION



ARTS & SCIENCES Division SUMMA Summaries Comparisons

Instructor / Student Interaction	2005 A&S	2007 A&S	Incr/ Decr	2008 A&S	Incr/ Decr	2005 LBC	2007 LBC	Incr/ Decr	2008 LBC	Incr/ Decr	2008 A&S Over/ Under LBC	2008 National Mean	2008 A&S Over/ Under National
4. Presentations cause me to think in depth	3.39	3.89	0.50	3.88	-0.01	4.03	4.12	0.09	4.00	-0.12	-0.12	4.13	-0.25
13. I look forward to class	3.58	3.56	-0.02	3.65	0.09	3.79	3.86	0.07	3.79	-0.07	-0.14	3.87	-0.22
14. The effort I put in to this course equals other courses	3.31	3.91	0.60	3.76	-0.15	3.89	4.02	0.13	3.90	-0.12	-0.14	4.15	-0.39
18. I am learning much	4.09	4.18	0.09	4.07	-0.11	4.18	4.28	0.10	4.20	-0.08	-0.13	4.23	-0.16

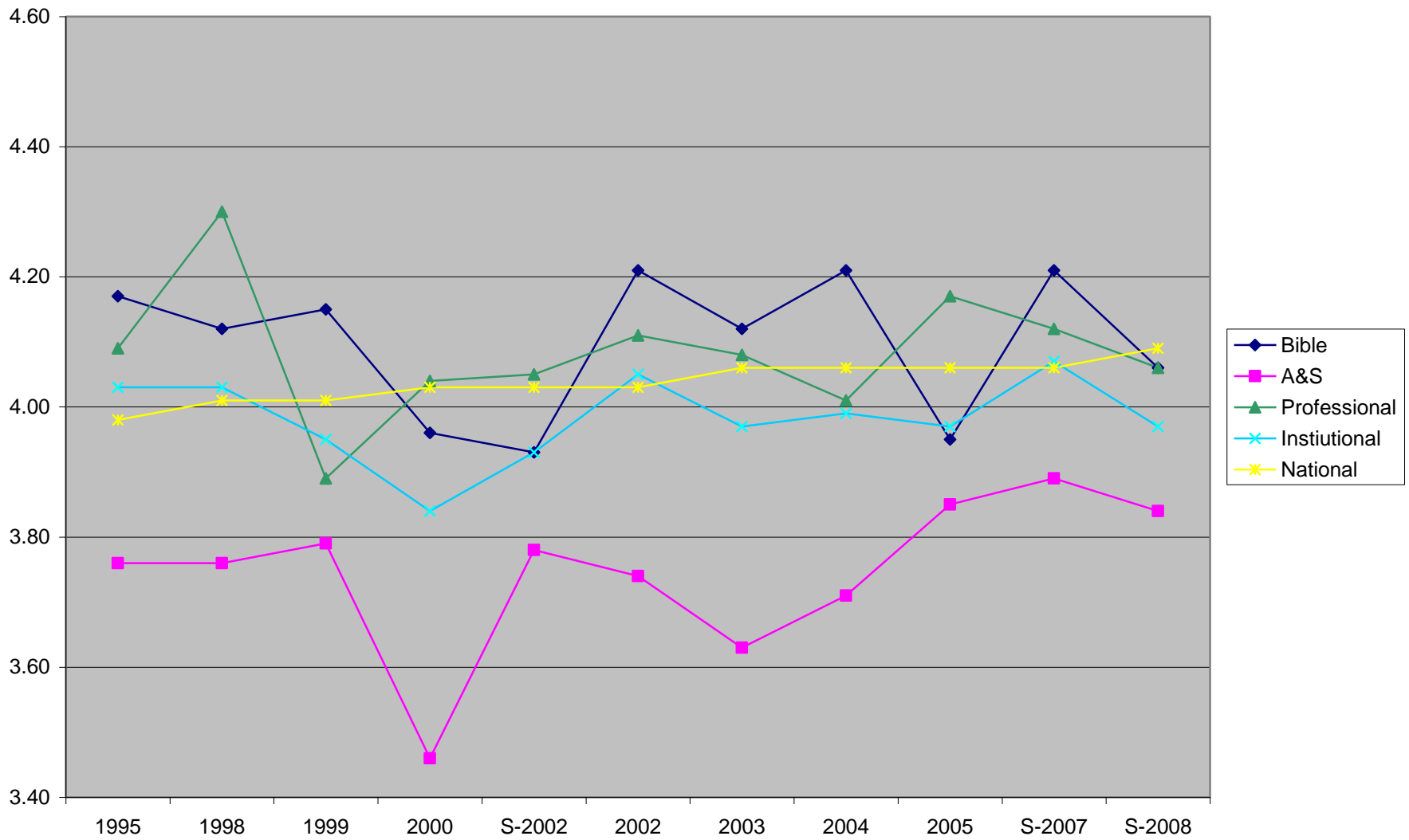
- Despite an overall gradual increase over the previous five years, the Arts & Sciences Division dropped slightly and continues to be rated lower in **Instructor / Student Interaction** while LBC overall and the other two divisions are within range of the national mean.

Consideration: Of the three divisions, it is expected that the Professional Division would score the highest in this area as they serve as advisors to the students. It might also be argued that the Biblical Division professors would interact more with students due to the college's emphasis on Biblical teaching

Recommendation: The Arts & Sciences Division may still want to brainstorm ways in which they can provide better Instructor / Student Interaction.

Divisional comments, observations, recommendations: _____

INSTRUCTOR / STUDENT INTERACTION



ARTS & SCIENCES Division SUMMA Summaries Comparisons

Testing	2005 A&S	2007 A&S	Incr/ Decr	2008 A&S	Incr/ Decr	2005 LBC	2007 LBC	Incr/ Decr	2008 LBC	Incr/ Decr	2008 A&S Over/ Under LBC	2008 National Mean	2008 A&S Over/ Under National
5. Adequate means to evaluate my learning	4.27	4.27	0.00	4.15	-0.12	4.24	4.28	0.04	4.16	-0.12	-0.01	4.27	-0.12
6. Methods for evaluating are reasonable	4.36	4.28	-0.08	4.15	-0.13	4.36	4.34	-0.02	4.23	-0.11	-0.08	4.28	-0.13
23. Exams cover materials from course	4.50	4.41	-0.09	4.41	0.00	4.52	4.51	-0.01	4.43	-0.08	-0.02	No National	
24. Adequate time for exams	4.50	4.53	0.03	4.36	-0.17	4.63	4.66	0.03	4.48	-0.18	-0.12	Means Available	
25. Exam questions phrased clearly	4.22	4.21	-0.01	4.09	-0.12	4.27	4.16	-0.11	4.14	-0.02	-0.05	for #23 through 33	

- Until this past year, LBC and all three divisions were generally rated higher in **Testing** than the national mean. These past two years showed a noticeable decline but the A&S division is still within .20 of the national mean.

Observation: “Adequate time for exams” (#24) dropped .18 from previous year and is .12 below the LBC mean (no national means).

Recommendations: Since Biblical Division scores higher on this than the other two divisions, conduct some cross-divisional discussions to determine possible reasons. Maybe, due to larger classes, Biblical Division instructors simplify their exams in some way? Could it be they require fewer essays which take more time with some students needing more times than others?

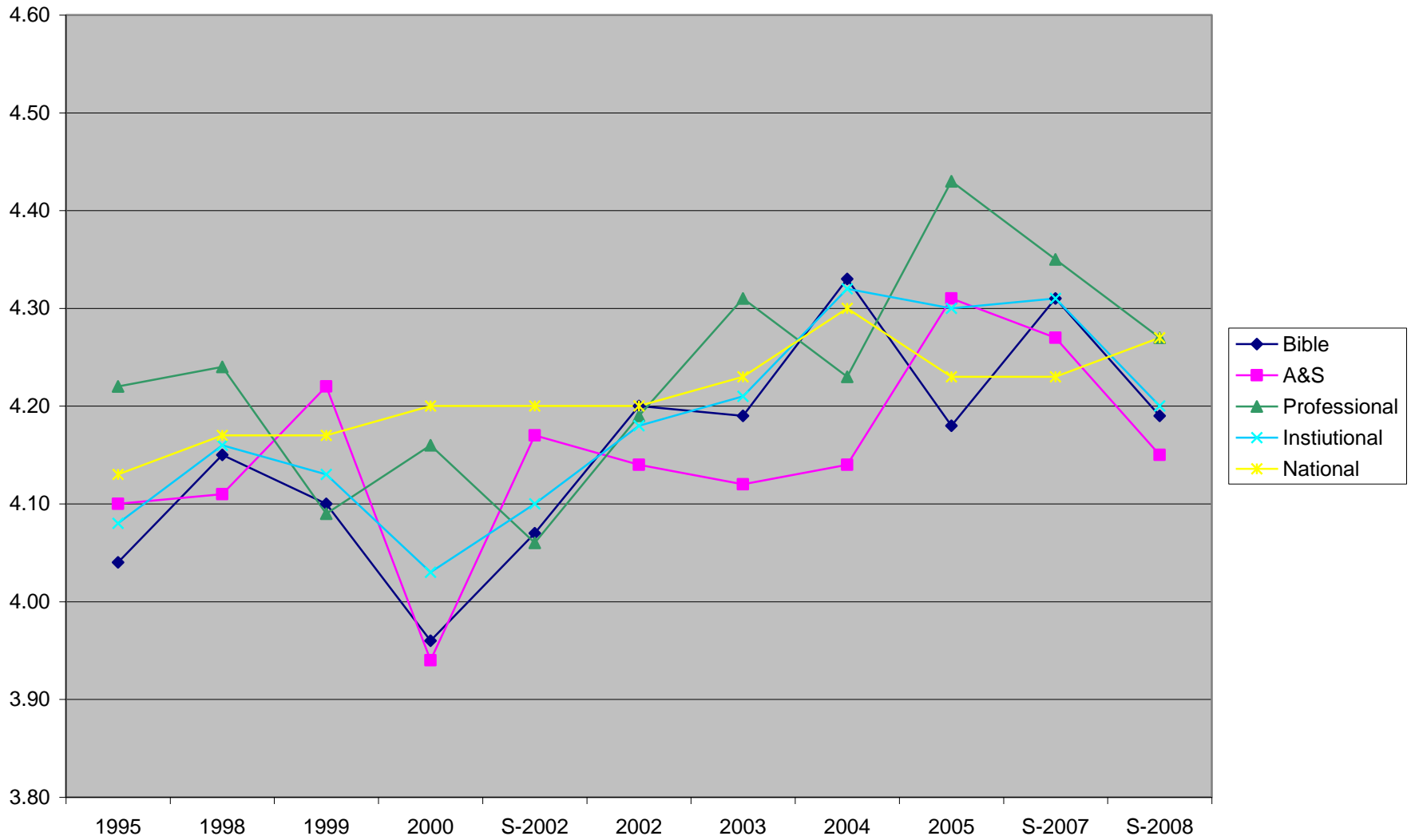
ARTS & SCIENCES Division SUMMA Summaries Comparisons

Course Objectives	2005 A&S	2007 A&S	Incr/ Decr	2008 A&S	Incr/ Decr	2005 LBC	2007 LBC	Incr/ Decr	2008 LBC	Incr/ Decr	2008 A&S Over/ Under LBC	2008 National Mean	2008 A&S Over/ Under National
12. Course objectives being achieved	4.41	4.43	0.02	4.28	-0.15	4.39	4.43	0.04	4.31	-0.12	-0.03	4.36	-0.08
15. Objectives are expressed clearly	4.29	4.33	0.04	4.18	-0.15	4.36	4.40	0.04	4.28	-0.12	-0.10	4.35	-0.17

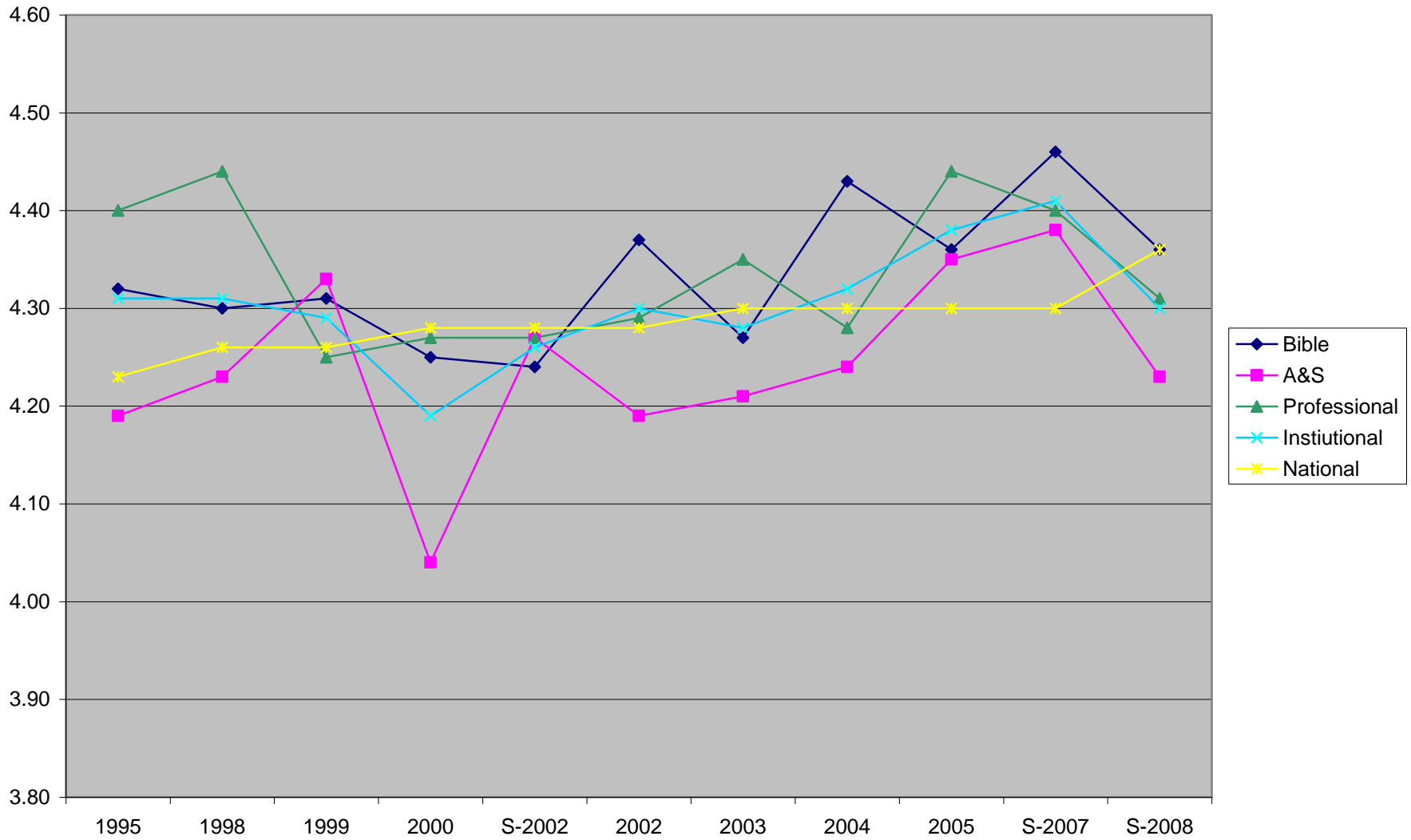
- Last year, LBC and all three divisions were rated higher in **Course Objectives** than the national mean. This past year showed a noticeable decline by all three divisions, but especially by the Arts & Sciences Division. Nevertheless, they are still within .17 of the national mean.

Divisional comments, observations, recommendations: _____

TESTING



COURSE OBJECTIVES



ARTS & SCIENCES Division SUMMA Summaries Comparisons

Course Assignments	2005 A&S	2007 A&S	Incr/ Decr	2008 A&S	Incr/ Decr	2005 LBC	2007 LBC	Incr/ Decr	2008 LBC	Incr/ Decr	2008 A&S Over/ Under LBC	2008 National Mean	2008 A&S Over/ Under National
2. Assignments contribute to understanding	4.30	4.38	0.08	4.28	-0.10	4.35	4.44	0.09	4.36	-0.08	-0.08	4.34	-0.06
19. Assignments are challenging	3.93	4.21	0.28	3.99	-0.22	3.99	4.14	0.15	4.03	-0.11	-0.04	4.12	-0.13

- Despite a decline this past year by LBC and all three divisions, the Arts & Sciences Division is still within .13 of the national means in **Course Assignments**.

ARTS & SCIENCES Division SUMMA Summaries Comparisons

Unclassified Questions	2005 A&S	2007 A&S	Incr/ Decr	2008 A&S	Incr/ Decr	2005 LBC	2007 LBC	Incr/ Decr	2008 LBC	Incr/ Decr	2008 A&S Over/ Under LBC	2008 National Mean	2008 A&S Over/ Under National
26. Textbooks contribute to understanding	4.00	4.06	0.06	4.13	0.07	4.11	4.14	0.03	4.20	0.06	-0.07		
27. Course is practical for students	4.26	4.28	0.02	4.22	-0.06	4.37	4.43	0.06	4.33	-0.10	-0.11		
28. Experiences meet learning needs	3.87	4.10	0.23	3.98	-0.12	3.93	4.07	0.14	3.96	-0.11	0.02		
29. Instructor explains techniques clearly	3.98	4.00	0.02	3.93	-0.07	4.04	4.08	0.04	3.98	-0.10	-0.05		
30. Assignments increase understanding for lab work	3.60	3.98	0.38	3.92	-0.06	3.78	3.99	0.21	3.85	-0.14	0.07		
31. Labs contribute to understanding	3.70	3.94	0.24	4.10	0.16	3.93	3.99	0.06	3.92	-0.07	0.18		
32. Manual explains procedures for lab	3.77	4.03	0.26	3.97	-0.06	3.87	3.70	-0.17	3.90	0.20	0.07		
33. Equipment is ready for labs	4.07	4.31	0.24	4.13	-0.18	4.08	4.15	0.07	4.01	-0.14	0.12		

Observation: “Equipment is ready for labs” (#33) dropped by .18 (no National Mean for comparison).

Recommendations: While the question has to do with the equipment being ready and available for laboratory times, this committee discussed whether or not the quality of the equipment might not have influenced the answers to this question. The division should consider conducting a focus group of students currently using the science lab with this issue in mind.

Divisional comments, observations, recommendations: _____

COURSE ASSIGNMENTS

