

TO: Biblical Division
FROM: Dr. G. Gordon Gregory, Dean of Undergraduate Education
DATE: October 22, 2008
RE: SUMMA Observations & Recommendations

The Committee for Institutional Research & Assessment (CIRA) was asked to look at the aggregate data from the 2007/2008 SUMMA Summaries. The CIRA has compiled the following data along with initial observations and recommendations concerning the Division of Biblical Education. Please note that SUMMA does not indicate whether variances on individual items are statistically significant. Therefore, all variances referenced are presented for the sake of putting comparisons into perspective.

See accompanying Biblical Division SUMMA Summaries Comparisons.

Celebration Points

1. Despite a decline this past year, the Biblical Division excels in the general category of **Instructor Preparation and Organization** (see graphs).
2. Biblical Division scored above 4.50 on the following:
 - Clarity and audibility of instructor's speech (#1), 4.57
 - Adequate opportunity to ask questions (#7), 4.57
 - Instructor seems well prepared (#9), 4.66
 - Instructor committed to high professional competence (#16), 4.61
 - Overall good teacher (#22), 4.51
 - Exams cover materials from course (#23), 4.54
 - Adequate time for exams (#24), 4.59
3. Biblical Division scored above the national norm on 12 of the 22 items. Of the remaining 10, they scored within .10 of the national mean on 7 of them.

General Observations

- Historically the Biblical Division has tracked very close to or above the national means. In 2008 the division dropped (albeit slightly) on all six factors. However the division continues to be strong in the areas of **Course Assignments, Course Objectives**, and especially in **Instructor Preparation and Organization**.

General Considerations

- It should be noted that the divisional summaries include not only adjuncts from outside LBC but also LBC instructors that teach courses across the divisions. Since these would be included as "full-time" faculty, it disguises the fact that they are teaching just one or two courses in that division.

General Recommendations

1. Individual instructors should examine their own SUMMA score for each of the items to determine if this is an issue they should address individually.
2. The division may want to set aside some time in their monthly meetings to brainstorm possible causes of the challenges noted under **Instructor Commitment to Student Learning**. The division may want to discuss whether these two observations need to be addressed and how they should be addressed.

Six Factors

BIBLICAL Division SUMMA Summaries Comparisons

Instructor Commitment to Student Learning	2005 Bib.	2007 Bib.	Incr/ Decr	2008 Bib	Incr/ Decr	2005 LBE	2007 LBE	Incr/ Decr	2008 LBE	Incr/ Decr	2008 Bib. Over/ Under LBE	2008 National Mean	2008 Bib. Over/ Under National
1. Clarity and audibility of instructor's speech	4.71	4.70	-0.01	4.60	-0.10	4.51	4.57	0.06	4.56	-0.01	0.04	4.49	0.11
7. Adequate opportunity to ask questions	4.60	4.63	0.03	4.57	-0.06	4.63	4.66	0.03	4.60	-0.06	-0.03	4.53	0.04
8. Instructor teaches clearly	4.29	4.52	0.23	4.41	-0.11	4.40	4.45	0.05	4.35	-0.10	0.06	4.32	0.09
16. Instructor committed to high professional competence	4.50	4.69	0.19	4.61	-0.08	4.56	4.66	0.10	4.57	-0.09	0.04	4.44	0.17
17. Instructor gives useful feedback	3.70	3.70	0.00	3.67	-0.03	3.92	3.98	0.06	3.87	-0.11	-0.20	4.10	-0.43
20. Instructor helps without taking over	3.99	4.14	0.15	3.90	-0.24	4.15	4.22	0.07	4.06	-0.16	2.84	4.21	-0.31
21. Instructor relates theory to practice	4.23	4.39	0.16	4.25	-0.14	4.29	4.35	0.06	4.22	-0.13	0.03	4.29	-0.04

- Despite a decline this past year, the Biblical Division is within range of the national means in **Instructor Commitment to Student Learning**. Two areas may need addressing:

Observation: The Biblical Division scored a 3.67 on “Instructor gives useful feedback” (#17), dropping .03 from the previous year. This is the third year in a row that this has been rated 3.70 or below and places this item .20 below the LBC mean and .43 below the national mean.

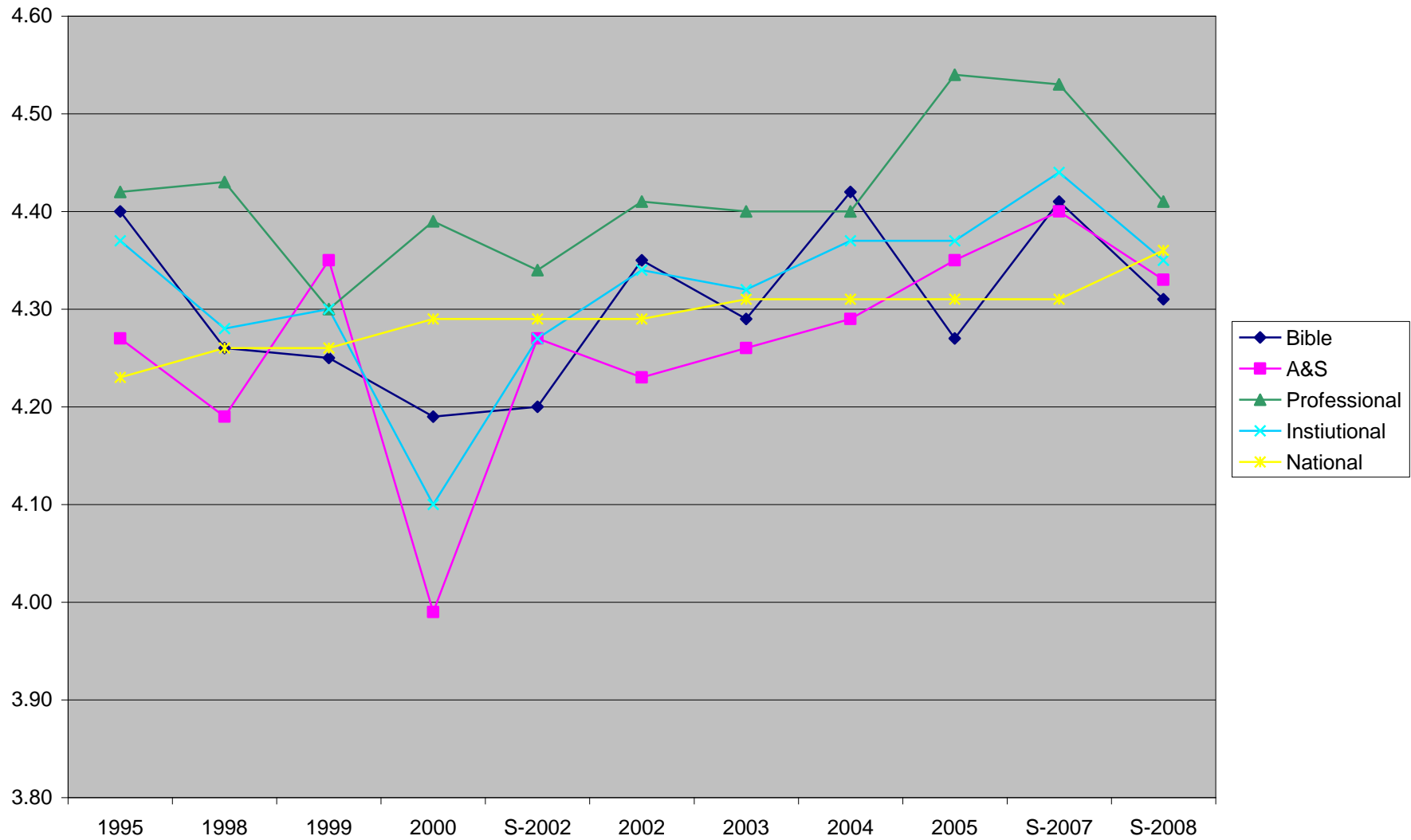
Recommendations: The Biblical Division scored lower on this item than the other two divisions. Since this issue would tend to be prevalent in the larger Bible courses, some discussion at the divisional level could concentrate on how to give useful feedback in lecture courses. For instance, if a majority of students are in need of similar feedback, a general in-class announcement could be made or emails sent out to the class as a whole. Blended courses could take advantage of a discussion forum for providing generic feedback.

Observation: The Biblical Division scored a 3.90 on “Instructor helps without taking over” (#20), dropping .24 from the previous year. This is .16 below the LBC mean and .31 below the national mean.

Recommendations: Some effort should be made to clarify what the students think this means. Could it be that the instructor ‘takes over’ by not allowing for differences of opinion? A focus group of students might shed some light on this.

Divisional comments, observations, recommendations: _____

INSTRUCTOR COMMITMENT to STUDENT LEARNING



BIBLICAL Division SUMMA Summaries Comparisons

Instructor Preparation and Organization	2005 Bib.	2007 Bib.	Incr/ Decr	2008 Bib	Incr/ Decr	2005 LBE	2007 LBE	Incr/ Decr	2008 LBE	Incr/ Decr	2008 Bib. Over/ Under LBE	2008 National Mean	2008 Bib. Over/ Under National
3. Course requirements explained fully	4.24	4.40	0.16	4.40	0.00	4.29	4.31	0.02	4.26	-0.05	0.14	4.35	0.05
9. Instructor seems well prepared	4.57	4.73	0.16	4.66	-0.07	4.61	4.65	0.04	4.55	-0.10	0.11	4.46	0.20
11. Course appears well planned	4.43	4.62	0.19	4.49	-0.13	4.46	4.51	0.05	4.37	-0.14	0.12	4.35	0.14

- Despite a decline this past year, the Biblical Division still excels in **Instructor Preparation and Organization**.

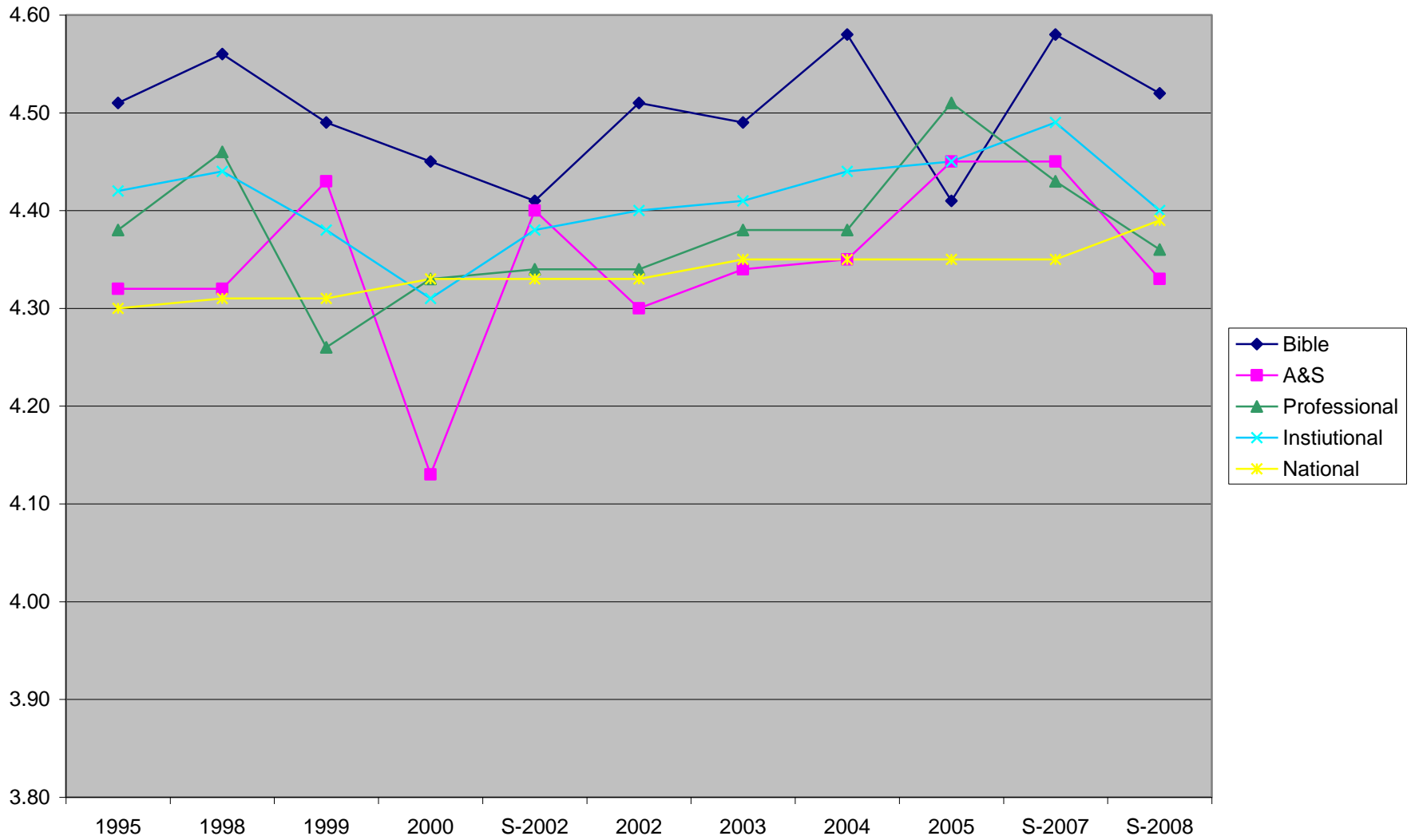
BIBLICAL Division SUMMA Summaries Comparisons

Instructor / Student Interaction	2005 Bib.	2007 Bib.	Incr/ Decr	2008 Bib	Incr/ Decr	2005 LBE	2007 LBE	Incr/ Decr	2008 LBE	Incr/ Decr	2008 Bib. Over/ Under LBE	2008 National Mean	2008 Bib. Over/ Under National
4. Presentations cause me to think in depth	4.05	4.32	0.27	4.11	-0.21	4.03	4.12	0.09	4.00	-0.12	0.11	4.13	-0.02
13. I look forward to class	3.77	4.02	0.25	3.85	-0.17	3.79	3.86	0.07	3.79	-0.07	0.06	3.87	-0.02
14. The effort I put in to this course equals other courses	3.84	4.12	0.28	3.93	-0.19	3.89	4.02	0.13	3.90	-0.12	0.03	4.15	-0.22
18. I am learning much	4.14	4.39	0.25	4.33	-0.06	4.18	4.28	0.10	4.20	-0.08	0.13	4.23	0.10

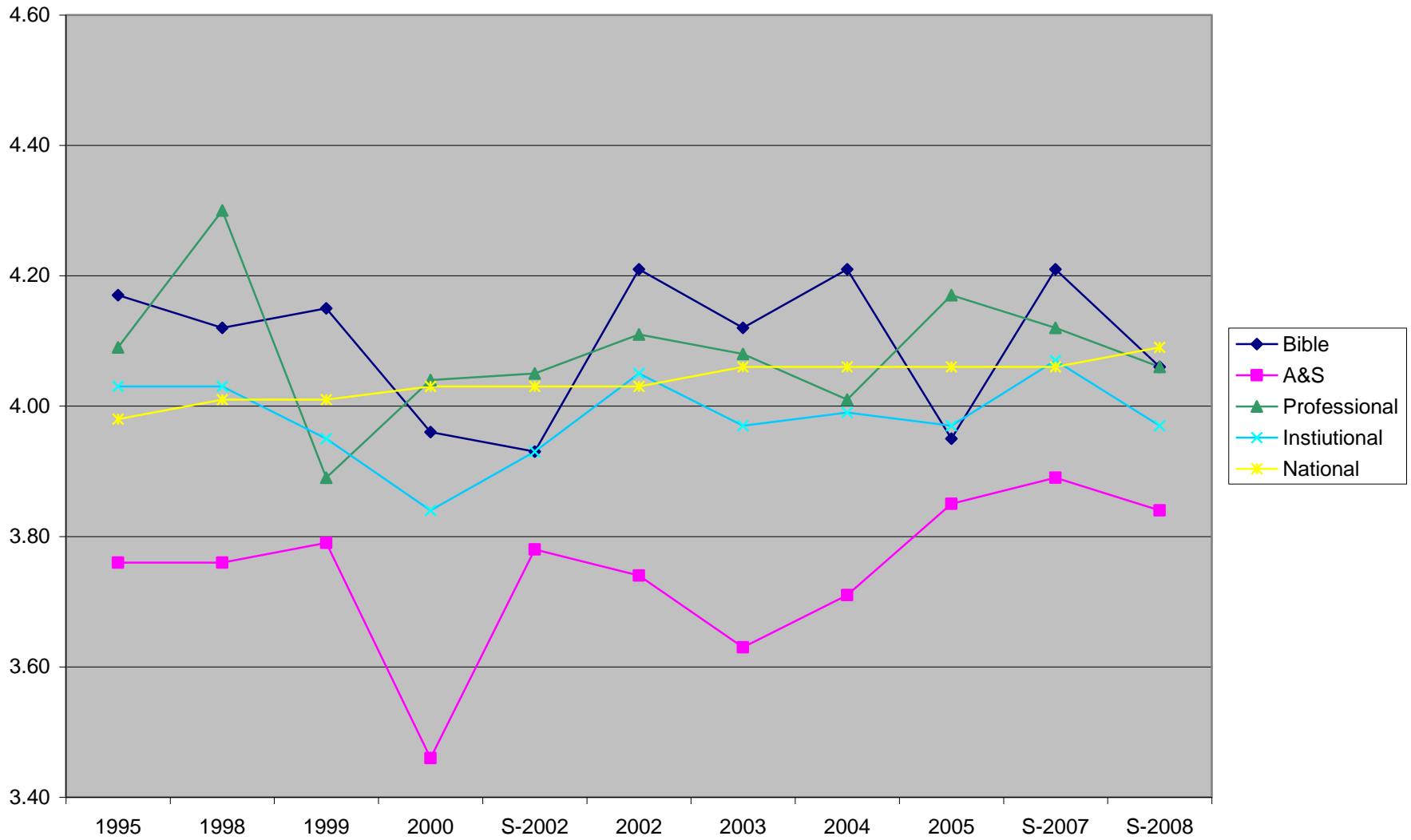
- Despite a decline this past year, the Biblical Division is still very close to or exceeds both the LBC and national means in the area of **Instructor / Student Interaction**.

Divisional comments, observations, recommendations: _____

INSTRUCTOR PREPARATION and ORGANIZATION



INSTRUCTOR / STUDENT INTERACTION



BIBLICAL Division SUMMA Summaries Comparisons

Testing	2005 Bib.	2007 Bib.	Incr/ Decr	2008 Bib	Incr/ Decr	2005 LBE	2007 LBE	Incr/ Decr	2008 LBE	Incr/ Decr	2008 Bib. Over/ Under LBE	2008 National Mean	2008 Bib. Over/ Under National
5. Adequate means to evaluate my learning	4.11	4.24	0.13	4.12	-0.12	4.24	4.28	0.04	4.16	-0.12	-0.04	4.27	-0.15
6. Methods for evaluating are reasonable	4.26	4.38	0.12	4.26	-0.12	4.36	4.34	-0.02	4.23	-0.11	0.03	4.28	-0.02
23. Exams cover materials from course	4.47	4.62	0.15	4.54	-0.08	4.52	4.51	-0.01	4.43	-0.08	0.11	No National	
24. Adequate time for exams	4.73	4.80	0.07	4.59	-0.21	4.63	4.66	0.03	4.48	-0.18	0.11	Means Available	
25. Exam questions phrased clearly	4.18	4.18	0.00	4.16	-0.02	4.27	4.16	-0.11	4.14	-0.02	0.02	for #23 through 33	

- Until this past year, LBC and all three divisions were generally rated higher than the national mean in **Testing**. This past year showed a noticeable decline but the Biblical Division is still within .15 of the two questions with national means.

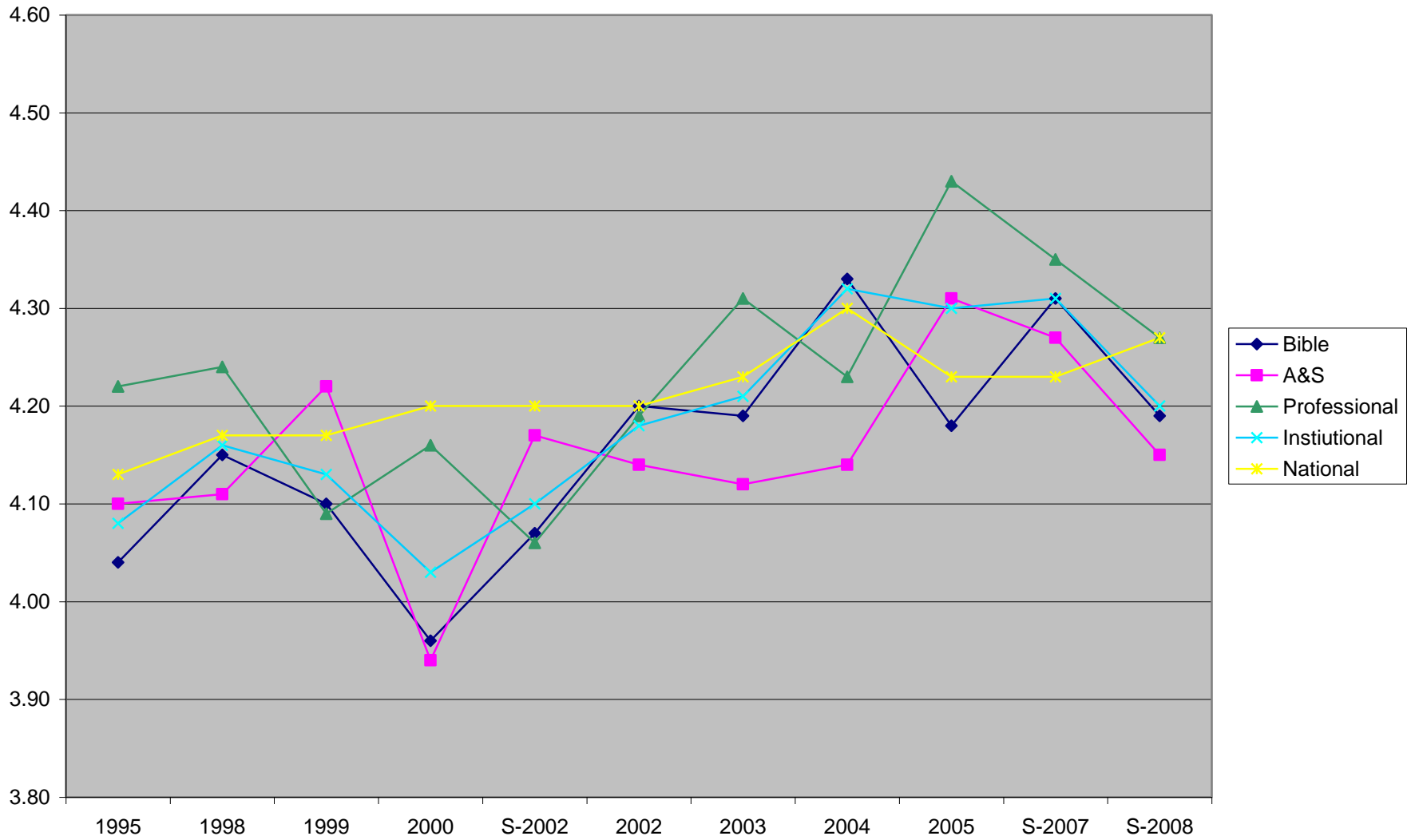
BIBLICAL Division SUMMA Summaries Comparisons

Course Objectives	2005 Bib.	2007 Bib.	Incr/ Decr	2008 Bib	Incr/ Decr	2005 LBE	2007 LBE	Incr/ Decr	2008 LBE	Incr/ Decr	2008 Bib. Over/ Under LBE	2008 National Mean	2008 Bib. Over/ Under National
12. Course objectives being achieved	4.34	4.40	0.06	4.34	-0.06	4.39	4.43	0.04	4.31	-0.12	0.03	4.36	-0.02
15. Objectives are expressed clearly	4.39	4.47	0.08	4.38	-0.09	4.36	4.40	0.04	4.28	-0.12	0.10	4.35	0.03

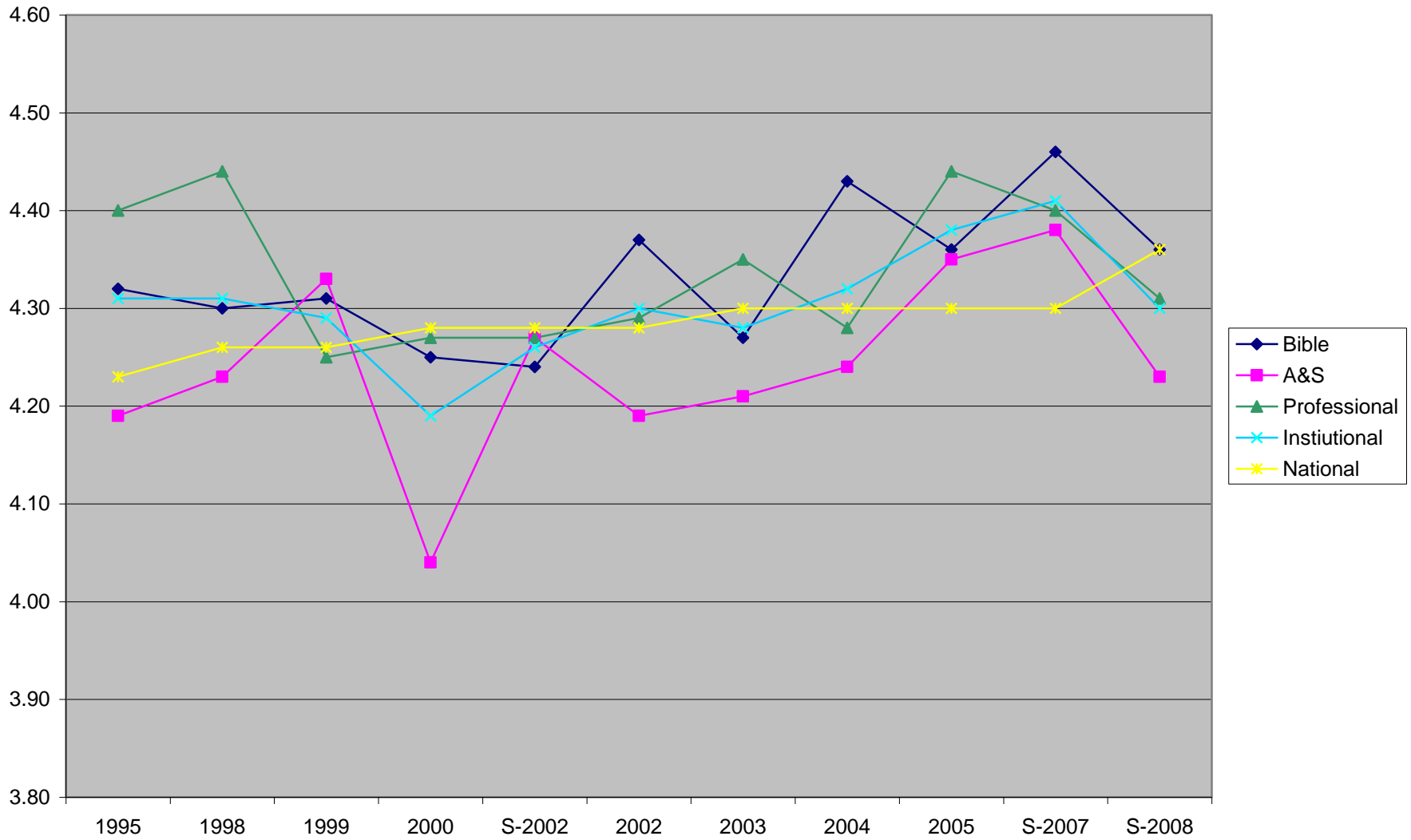
- Until this past year, LBC and all three divisions were rated higher than the national mean in **Course Objectives**. This past year showed a noticeable decline but the Biblical Division is right at or slightly above the national mean.

Divisional comments, observations, recommendations: _____

TESTING



COURSE OBJECTIVES



BIBLICAL Division SUMMA Summaries Comparisons

Course Assignments	2005 Bib.	2007 Bib.	Incr/ Decr	2008 Bib	Incr/ Decr	2005 LBE	2007 LBE	Incr/ Decr	2008 LBE	Incr/ Decr	2008 Bib. Over/ Under LBE	2008 National Mean	2008 Bib. Over/ Under National
2. Assignments contribute to understanding	4.31	4.46	0.15	4.45	-0.01	4.35	4.44	0.09	4.36	-0.08	0.09	4.34	0.11
19. Assignments are challenging	3.98	4.12	0.14	4.10	-0.02	3.99	4.14	0.15	4.03	-0.11	0.07	4.12	-0.02

- Despite a decline this past year by LBC and all three divisions, the Biblical Divisions decline was ever so slight and they remain higher than the overall national mean in **Course Assignments**.

Divisional comments, observations, recommendations: _____

COURSE ASSIGNMENTS

