

TO: Professional Division
FROM: Dr. G. Gordon Gregory, Dean of Undergraduate Education
DATE: October 22, 2008
RE: SUMMA Observations & Recommendations

The Committee for Institutional Research & Assessment (CIRA) was asked to look at the aggregate data from the 2007/2008 SUMMA Summaries. The CIRA has compiled the following data along with initial observations and recommendations concerning the Division of Professional Education. Please note that SUMMA does not indicate whether variances on individual items are statistically significant. Therefore, all variances referenced are presented for the sake of putting comparisons into perspective.

See accompanying Professional Division SUMMA Summaries Comparisons chart.

Celebration Points

1. Despite a decline this past year, the Professional Division still excels in the general category of **Instructor Commitment to Student Learning** (see graph).
2. Professional Division scored 4.50 or above on the following:
 - “Adequate opportunity to ask questions” (#7), 4.69
 - “Clarity and audibility of instructor’s speech” (#1), 4.60
 - “Instructor cares about my learning” (#10), 4.60
 - “Instructor committed to high level of professional competence” (#16), 4.54
 - “Adequate time for exams” (#24), 4.53
 - “Instructor seems well prepared” (#9), 4.52
3. Professional Division scored above the national norm on 11 out of 22 items. Of the remaining 11, they scored within .10 of the national mean on 9 of them.
4. While dropping significantly from 2005 to 2007, “Exam questions phrased clearly” (#25) rose this past year by .10.
5. While dropping significantly from 2005 to 2007, “Manual explains procedures for lab” (#32) rose this past year by .33.

General Observations

- Historically the Professional Division has scored higher than the other two divisions on SUMMA Surveys. In 2007 the division dropped (albeit slightly) on all but four items, while the other two divisions increased overall. In 2008 the division continued to decline in ratings, along with the rest of the college.

General Considerations

1. On a five-point rating scale, statistical regression occurs as the numbers get closer to the 5.0 and the averages are pulled down over time. Historically, the Professional Division has been earning ratings above the 4.25 mark so some regression is expected.

2. It should be noted that the divisional summaries include not only adjuncts from outside LBC but also LBC instructors that teach courses across the divisions. Since these would be included as “full-time” faculty, it disguises the fact that they are teaching just one or two courses in that division.

General Recommendations

1. Since no decrease is drastic, the division should just continue to monitor SUMMA scores to see if declines continue.
2. Individual instructors should examine their own SUMMA score for each of the items to determine if this is an issue they should address individually.
3. The division may want to set aside some time in their monthly meetings to brainstorm possible causes of the challenges noted under **Instructor Commitment to Student Learning**. The division may want to discuss what other areas need to be addressed and how they should be addressed.

Six Factors

PROFESSIONAL Division SUMMA Summaries Comparisons

Instructor Commitment to Student Learning	2005 Prof.	2007 Prof.	Incr/ Decr	2008 Prof.	Incr/ Decr.	2005 LBC	2007 LBC	Incr/ Decr	2008 LBC	Incr/ Decr	2008 Prof. Over/ Under LBC	2008 National Mean	2008 Over/ Under National
1. Clarity and audibility of instructor's speech	4.71	4.70	-0.01	4.60	-0.10	4.51	4.57	0.06	4.56	-0.01	0.04	4.49	0.11
7. Adequate opportunity to ask questions	4.71	4.73	0.02	4.69	-0.04	4.63	4.66	0.03	4.60	-0.06	0.09	4.53	0.16
8. Instructor teaches clearly	4.53	4.48	-0.05	4.39	-0.09	4.40	4.45	0.05	4.35	-0.10	0.04	4.32	0.07
10. Instructor cares about my learning	4.66	4.72	0.06	4.60	-0.12	4.50	4.65	0.15	4.54	-0.11	0.06	4.43	0.17
16. Instructor committed to high professional competence	4.63	4.65	0.02	4.54	-0.11	4.56	4.66	0.10	4.57	-0.09	-0.03	4.44	0.10
17. Instructor gives useful feedback	4.15	4.18	0.03	3.97	-0.21	3.92	3.98	0.06	3.87	-0.11	0.10	4.10	-0.13
20. Instructor helps without taking over	4.39	4.28	-0.11	4.20	-0.08	4.15	4.22	0.07	4.06	-0.16	3.14	4.21	-0.01
21. Instructor relates theory to practice	4.50	4.45	-0.05	4.30	-0.15	4.29	4.35	0.06	4.22	-0.13	0.08	4.29	0.01

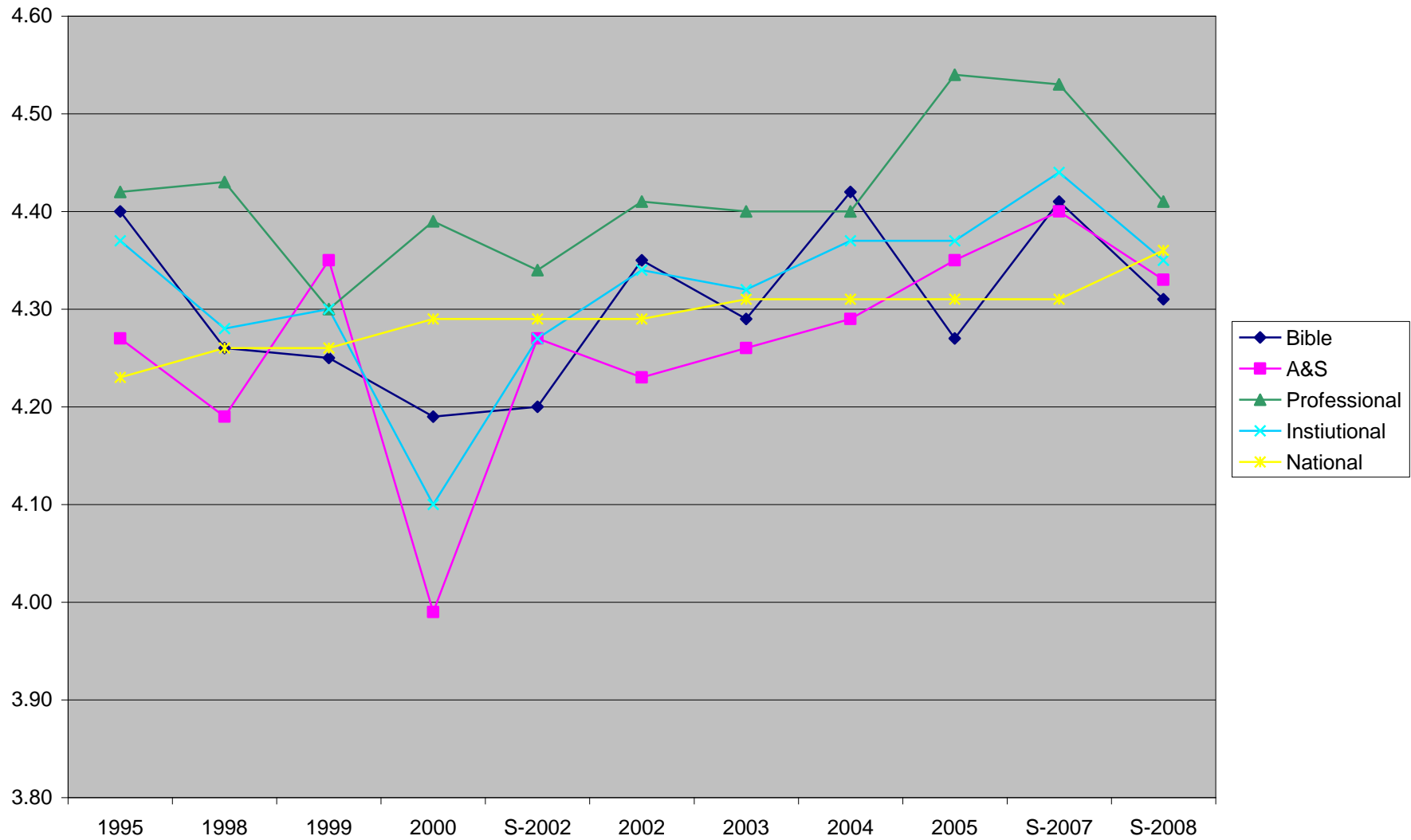
- Despite a decline this past year, the Professional Division still excels in **Instructor Commitment to Student Learning**.

Observation: “Instructor gives useful feedback” (#17) dropped .21 from previous year and is now .13 below the national mean.

Recommendations: Attempts should be made to determine if the increased use of Moodle in blended classes is causing students to have higher expectations of more immediate feedback in all classes.

Divisional comments, observations, recommendations: _____

INSTRUCTOR COMMITMENT to STUDENT LEARNING



PROFESSIONAL Division SUMMA Summaries Comparisons

Instructor Preparation and Organization	2005 Prof.	2007 Prof.	Incr/ Decr	2008 Prof.	Incr/ Decr.	2005 LBC	2007 LBC	Incr/ Decr	2008 LBC	Incr/ Decr	2008 Prof. Over/ Under LBC	2008 National Mean	2008 Over/ Under National
3. Course requirements explained fully	4.41	4.33	-0.08	4.26	-0.07	4.29	4.31	0.02	4.26	-0.05	0.00	4.35	-0.09
9. Instructor seems well prepared	4.63	4.53	-0.10	4.52	-0.01	4.61	4.65	0.04	4.55	-0.10	-0.03	4.46	0.06
11. Course appears well planned	4.49	4.41	-0.08	4.31	-0.10	4.46	4.51	0.05	4.37	-0.14	-0.06	4.35	-0.04

- The Professional Division fell only slightly in this area and is still above or very close to both the LBC and national means.

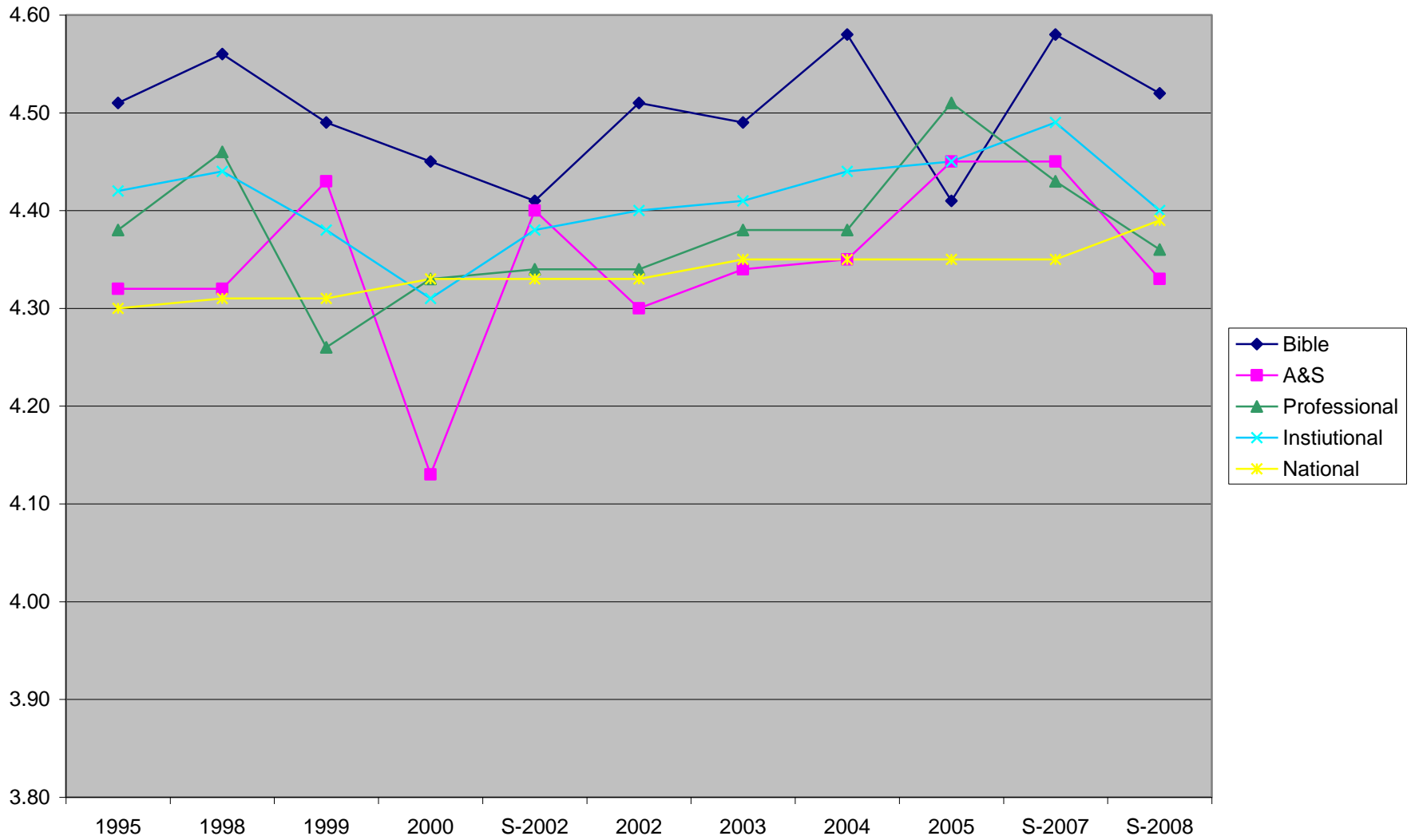
PROFESSIONAL Division SUMMA Summaries Comparisons

Instructor / Student Interaction	2005 Prof.	2007 Prof.	Incr/ Decr	2008 Prof.	Incr/ Decr.	2005 LBC	2007 LBC	Incr/ Decr	2008 LBC	Incr/ Decr	2008 Prof. Over/ Under LBC	2008 National Mean	2008 Over/ Under National
4. Presentations cause me to think in depth	4.19	4.15	-0.04	4.05	-0.10	4.03	4.12	0.09	4.00	-0.12	0.05	4.13	-0.08
13. I look forward to class	4.09	4.02	-0.07	3.92	-0.10	3.79	3.86	0.07	3.79	-0.07	0.13	3.87	0.05
14. The effort I put in to this course equals other courses	4.05	4.02	-0.03	4.05	0.03	3.89	4.02	0.13	3.90	-0.12	0.15	4.15	-0.10
18. I am learning much	4.36	4.27	-0.09	4.24	-0.03	4.18	4.28	0.10	4.20	-0.08	0.04	4.23	0.01

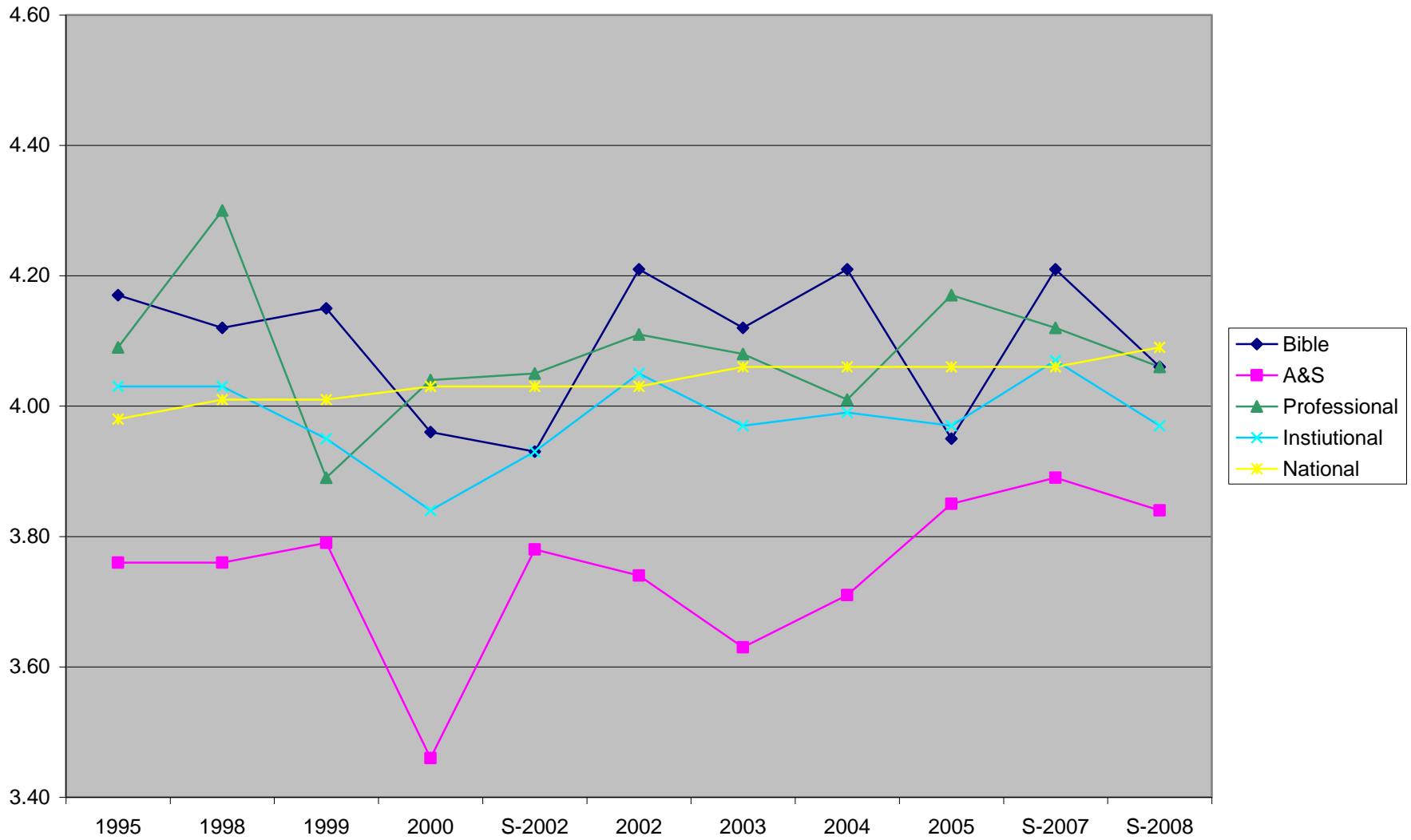
- The Professional Division fell slightly in this area but is still above or close to both the LBC and national means with the exception of question #14 which is a pretty ‘course specific’ question.

Divisional comments, observations, recommendations: _____

INSTRUCTOR PREPARATION and ORGANIZATION



INSTRUCTOR / STUDENT INTERACTION



PROFESSIONAL Division SUMMA Summaries Comparisons

Testing	2005 Prof.	2007 Prof.	Incr/ Decr	2008 Prof.	Incr/ Decr.	2005 LBC	2007 LBC	Incr/ Decr	2008 LBC	Incr/ Decr	2008 Prof. Over/ Under LBC	2008 National Mean	2008 Over/ Under National
5. Adequate means to evaluate my learning	4.37	4.34	-0.03	4.22	-0.12	4.24	4.28	0.04	4.16	-0.12	0.06	4.27	-0.05
6. Methods for evaluating are reasonable	4.50	4.37	-0.13	4.32	-0.05	4.36	4.34	-0.02	4.23	-0.11	0.09	4.28	0.04
23. Exams cover materials from course	4.62	4.48	-0.14	4.33	-0.15	4.52	4.51	-0.01	4.43	-0.08	-0.10	No National	
24. Adequate time for exams	4.67	4.61	-0.06	4.53	-0.08	4.63	4.66	0.03	4.48	-0.18	0.05	Means Available	
25. Exam questions phrased clearly	4.43	4.07	-0.36	4.17	0.10	4.27	4.16	-0.11	4.14	-0.02	0.03	for #23 through 33	

- The Professional Division fell only slightly in this area and is still above or very close to both the LBC and national means.

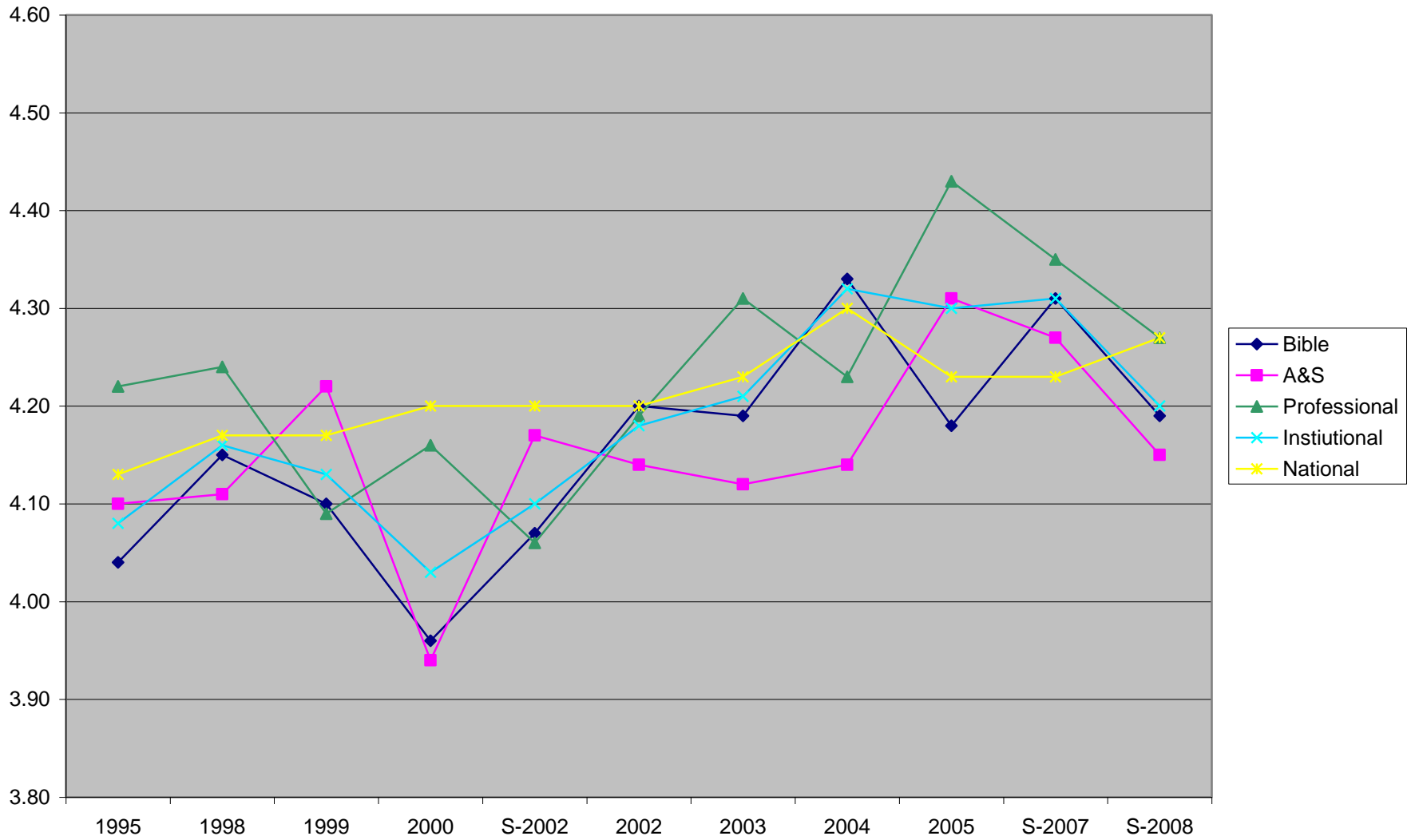
PROFESSIONAL Division SUMMA Summaries Comparisons

Course Objectives	2005 Prof.	2007 Prof.	Incr/ Decr	2008 Prof.	Incr/ Decr.	2005 LBC	2007 LBC	Incr/ Decr	2008 LBC	Incr/ Decr	2008 Prof. Over/ Under LBC	2008 National Mean	2008 Over/ Under National
12. Course objectives being achieved	4.45	4.39	-0.06	4.32	-0.07	4.39	4.43	0.04	4.31	-0.12	0.01	4.36	-0.04
15. Objectives are expressed clearly	4.42	4.40	-0.02	4.31	-0.09	4.36	4.40	0.04	4.28	-0.12	0.03	4.35	-0.04

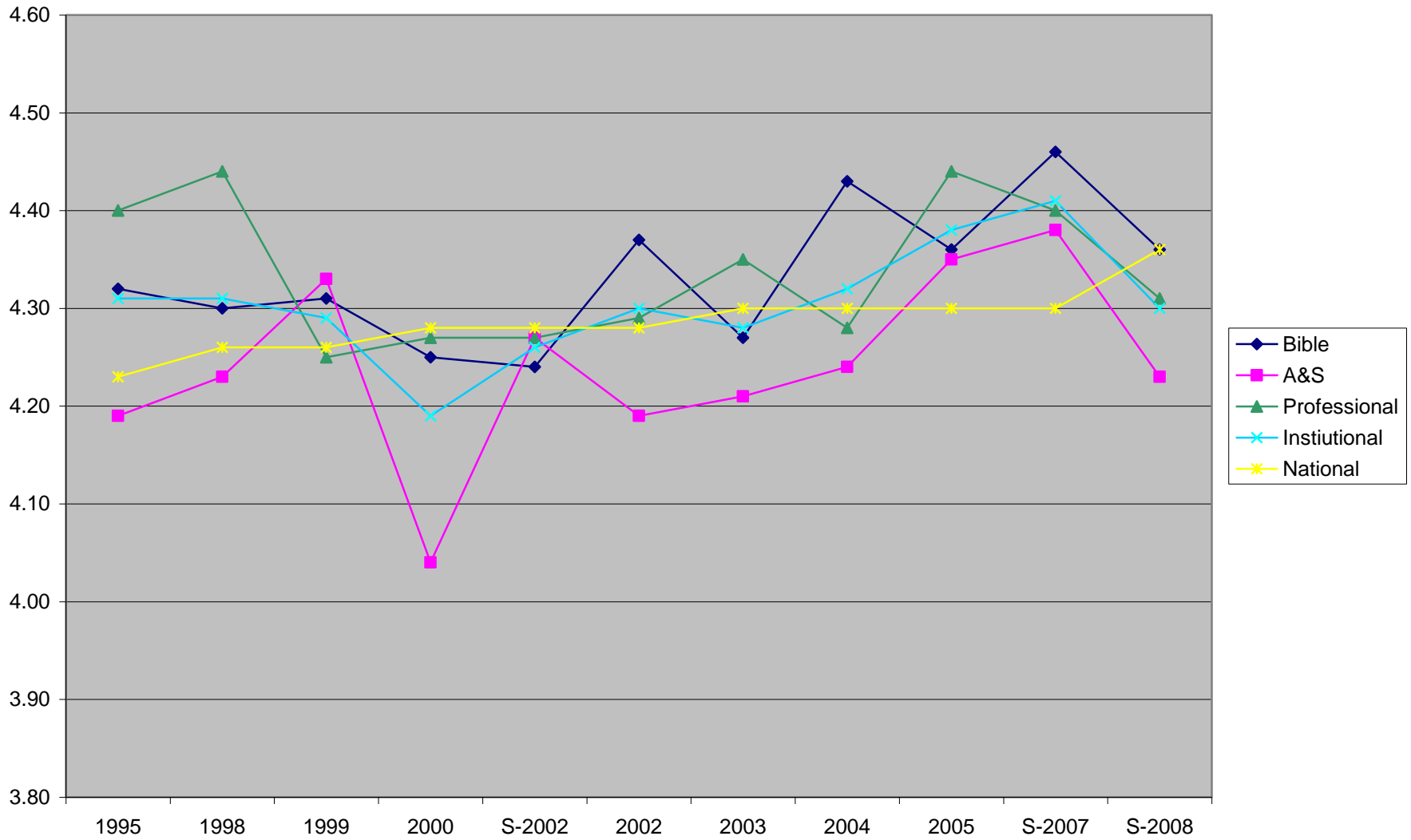
- For the past few years, LBC and all three divisions were rated higher in **Course Objectives** than the national mean. This past year showed a noticeable decline for LBC across the board but the Professional Division is still slightly above the national mean.

Divisional comments, observations, recommendations: _____

TESTING



COURSE OBJECTIVES



PROFESSIONAL Division SUMMA Summaries Comparisons

Course Assignments	2005 Prof.	2007 Prof.	Incr/ Decr	2008 Prof.	Incr/ Decr.	2005 LBC	2007 LBC	Incr/ Decr	2008 LBC	Incr/ Decr	2008 Prof. Over/ Under LBC	2008 National Mean	2008 Over/ Under National
2. Assignments contribute to understanding	4.49	4.47	-0.02	4.39	-0.08	4.35	4.44	0.09	4.36	-0.08	0.03	4.34	0.05
19. Assignments are challenging	4.10	4.08	-0.02	4.01	-0.07	3.99	4.14	0.15	4.03	-0.11	-0.02	4.12	-0.11

- Despite a decline this past year by LBC and all three divisions, the Professional Division is still within an acceptable range of the national means in **Course Assignments**.

Divisional comments, observations, recommendations: _____

COURSE ASSIGNMENTS

