



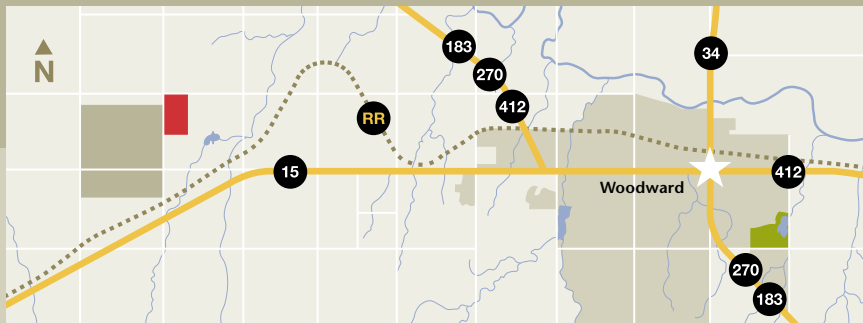
high velocity



infinite capacity



*Woodward...
where the wind is*



- Located in the heart of Oklahoma's wind country, Woodward is leading the state in wind industry development. With a new high capacity transmission line, thousands of acres available for manufacturing and staging, easy access transportation, new training programs, an educated workforce, and strong economic growth, Woodward's initiatives have propelled the city to the vanguard of renewable energy.

- Class 4 or higher wind power
- High capacity transmission line
- Manufacturing and Staging sites
- 720 Acre Industrial Airpark
- Existing buildings, 10 - 60,000 sf
- Existing utilities
- Attractive terms and State incentives
- Easy access highway and rail system
- Close proximity to other wind markets
- Career-ready, non-union workforce
- Low-cost training



OG&E's Commitment to Renewable Energy

- Plans to further expand its wind power portfolio to approximately 770 MW by 2012
- The Windspeed, a 121 mile long energized transmission line, between Oklahoma City and Woodward, connects OG&E's new extra high voltage substation near Woodward with the existing grid.
- The Woodward substation will serve as a renewable energy transmission hub as more wind farms are developed.
- New programs allowing customers to purchase up to 100% of their load from renewable energy
- Purchasing power from Oklahoma Wind Energy Center, owned & operated by FPL Energy, 51 MW
- OU Spirit Wind Farm, online, 100 MW
- Crossroads Wind Farm, in development, 227 MW
- Taloga Wind Farm PPA, online, 130 MW

The Oklahoma Energy Security Act

Our state has established a goal by calling for 15% of electricity to be generated from renewable sources by 2015.

In the lush grasslands and rolling plateaus of Northwest Oklahoma, you'll find the perfect partnership in Woodward, poised to support the development of 38,000 MW of wind generation. With our wind resources, the National Renewable Energy Lab predicts Oklahoma will be the second largest generator, supplying 10% of the nation's electricity needs by 2030.



State of Oklahoma Business Incentives:

- Choose Quarterly Cash Back (or) New Job Tax Credit
 - Sales Tax Refunds
 - 5 Year Ad Valorem Tax Exemption
 - Freeport Inventory Benefits
 - Industrial Access Road Assistance
 - Foreign Trade Zones
 - State and Local Financing Programs
 - State Production Tax (wind projects)
- credit is transferable

As one of Oklahoma's most dynamic communities, we're home to a rich heritage of oil and gas development, renewable energy development, world-class agriculture, research, advanced manufacturing and well-funded education. Our growth rate continues to outpace the state's average. We're rated one of the nation's Top 100 places to live; that's Energy for Life.

*For specific information on the
Wind Tech Training curriculum,
please visit
www.hptc.net*



*Sweeping changes in renewable energy have spurred new training at **High Plains Technology Center** with a flexible and affordable seven month program concentrating on history, math, electrical and mechanical fundamentals, instrumentation and controls, systems and components, culminating with an industry internship and a Wind Energy Tech Certificate.*



**WOODWARD
INDUSTRIAL
FOUNDATION**

PO BOX 1026
WOODWARD, OKLAHOMA
73802

LAVERN W. PHILLIPS

P: 580.254.5616

C: 580.334.7399

wif@sbcglobal.net

www.wifok.com



WOODWARD
INDUSTRIAL
FOUNDATION

www.wifok.com