



OKLAHOMA IS: WIND ENERGY



OKLAHOMA
DEPARTMENT OF COMMERCE

3rd

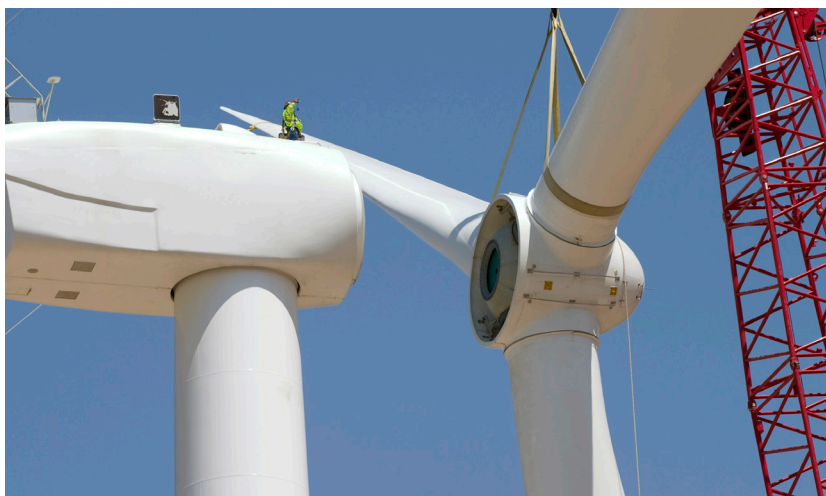
Oklahoma has the
3rd lowest energy
costs in the U.S.

Access to Market

Oklahoma ranked 2nd in the nation for total new capacity installed in 2014, and 4th for existing capacity and 9th best wind resource, making the state one of North America's top wind energy producers. Oklahoma currently has more than 2,000 wind turbines installed and more than 5,000 MW operational and under construction.

Nation's Leading Training and Education Programs

Oklahoma's colleges, universities and technology centers are focusing on the latest green energy technologies through academic programs, faculty/student research and innovative campus activities. Oklahoma continues to be one of the top states for wind industry training and education, offering the latest curriculum necessary for career-ready wind professionals.



OKLAHOMA

Oklahoma's Wind Supply Chain

From castings, machining and composites to forges, fabrications and risk management services, your potential suppliers are right here in Oklahoma. There are more than 500 Oklahoma companies equipped and ready to supply products and services to the wind industry.

SIEMENS

"Locating our newest wind service facility in Woodward, Oklahoma affords us a tremendous opportunity to be close to many of our U.S. customers and provide them with a high level of service that's both efficient and cost effective."

- Tim Holt, Siemens' CEO for Renewables Service

Reliable and Skilled Workforce

A right-to-work state that is leading WorkKeys certification, Oklahoma offers a workforce that is technologically proficient, and is highly capable of ensuring your company's success. Oklahoma's comprehensive education and CareerTech systems respond quickly to employer needs by developing wind training and degree programs to ensure a ready, skilled workforce.

Oklahoma's World-Class R&D Support

The Oklahoma Wind Power Initiative (OWPI), a joint research project between the University of Oklahoma and Oklahoma State University, provides critical information and resources to energy investors and Oklahoma wind energy stakeholders.

Oklahoma, a globally recognized leader in meteorological research and technology development, is continuing to break new ground in wind forecasting, helping statewide wind farms become more effective and efficient.

Helmerich Advanced Technology Research Center at the Oklahoma State University-Tulsa campus plays a leading role in the development and commercialization of the next generation of composites and materials for advanced manufacturing.

Available, Skilled, Affordable Oklahoma Workforce

Occupation	2014 Jobs	Oklahoma Median Hourly Earnings	National Median Hourly Earnings
Transportation, Storage and Distribution Managers	1,521	\$30.86	\$39.96
Construction Managers	6,071	\$26.45	\$31.09
Logisticians	2,140	\$33.38	\$35.29
Aerospace Engineers	912	\$43.28	\$49.94
Chemical Engineers	256	\$43.31	\$46.02
Electrical Engineers	1,253	\$36.24	\$42.83
Materials Engineers	238	\$33.26	\$41.98
Mechanical Engineers	2,669	\$37.52	\$39.35
Production, Planning and Expediting Clerks	4,516	\$21.18	\$21.52
Shipping, Receiving and Traffic Clerks	7,095	\$13.58	\$14.12
Weighers, Measurers, Checkers, Samplers and Recordkeeping	759	\$16.61	\$13.64
First-Line Supervisors of Mechanics, Installers and Repairers	6,404	\$27.42	\$29.34
Machinists	7,832	\$17.01	\$18.99
Welders, Cutters, Solderers and Brazers	11,383	\$17.40	\$17.58
Power Plant Operators	433	\$31.21	\$32.74
Total	53,482	\$22.62	\$25.74

Source: EMSI Complete Employment 2014.1

Is: PRO-BUSINESS

The Best Incentive Package in the Nation



In 2010, Oklahoma enacted the Oklahoma Energy Security Act, establishing a 15 percent renewable energy target by 2015. In 2012, three years early, the 15 percent goal was met. Meeting the goal ahead of schedule was attributed to the development of Oklahoma's wind resources over the past decade in addition to hydroelectric power generation and efficiency efforts.

Quality Jobs Ten-Year Cash Incentive

This incentive targets manufacturers and certain service industries that have a new payroll investment of \$2.5 million or more to receive a quarterly cash payment of up to 5 percent of new taxable payroll. A lower payroll threshold is available for certain food processing and research and development projects, or as a result of locating in targeted areas. Qualifying wage requirements would be the lower of the average county wage or the state index wage.

21st Century Quality Jobs

Oklahoma's 21st Century Quality Jobs offers incentives to businesses with a highly skilled, knowledge-based workforce. For qualifying companies, this unique incentive would pay businesses cash back, up to 10 percent of payroll, for up to 10 years for the creation of 10 jobs at an average wage that is the lower of 300 percent of the average county wage or 300 percent of the average of county wages in Oklahoma.

Oklahoma is the 3rd lowest in the nation for state and local tax burden and lower than most states in the Midwest and on the East and West coasts.

– Source: 2011 North American Business Cost Review by Moody's Analytics – www.economy.com

Oklahoma is the country's fourth-largest producer of wind power with 10.88 million megawatthours (MWh) of electricity in 2013, accounting for more than 6.5% of the U.S. net generation from wind.

– Source: EIA's March 2014 Electric Power Monthly – www.eia.gov

More Reasons to Choose Oklahoma

Customized Employee Training

Oklahoma's nationally lauded Training for Industry Program (TIP) is a no- or low-cost way for companies creating jobs in Oklahoma to get a skilled, focused and motivated workforce. Offered through CareerTech, TIP offers a variety of customized services, including:

- Job analysis and training needs assessment
- Instructional materials and development
- Instructors
- Training facilities
- Post-employment technical and team-based training
- Pre-employment training to demonstrate the skills of potential employees before they're hired

Oklahoma was No. 4 in wind energy employment with nearly 4,800 jobs across the industry. With the second largest number of new wind power installations during 2014, Oklahoma was home to many construction-related jobs.

– Source: U.S. Wind Industry Annual Market Report 2014 – www.awea.org

Sales Tax Exemptions

Additional Incentives You May Qualify for:

- Foreign Trade Zones
- Freeport Inventory Benefits
- Industrial Access Road Assistance
- State and Local Financing
- Enhanced incentives for locating in opportunity or enterprise zones
- Accelerated depreciation and employment tax credits for locating on former Indian reservation lands

DISCLAIMER: The materials contained in this document have been prepared by the Oklahoma Department of Commerce for informational purposes only and do not constitute legal or tax advice. This information is subject to change based on judicial interpretation and legislative action. The application of the information is subject to your unique facts and circumstances. YOU SHOULD NOT ACT UPON ANY INFORMATION CONTAINED IN THESE MATERIALS WITHOUT SEEKING YOUR OWN PROFESSIONAL LEGAL AND TAX ADVICE.

"ACCIONA now owns and operates more wind energy in Oklahoma than any other state in the U.S. This major investment is not just a result of the tremendous wind resource the state enjoys, but of the favorable business climate and support from local landowners."

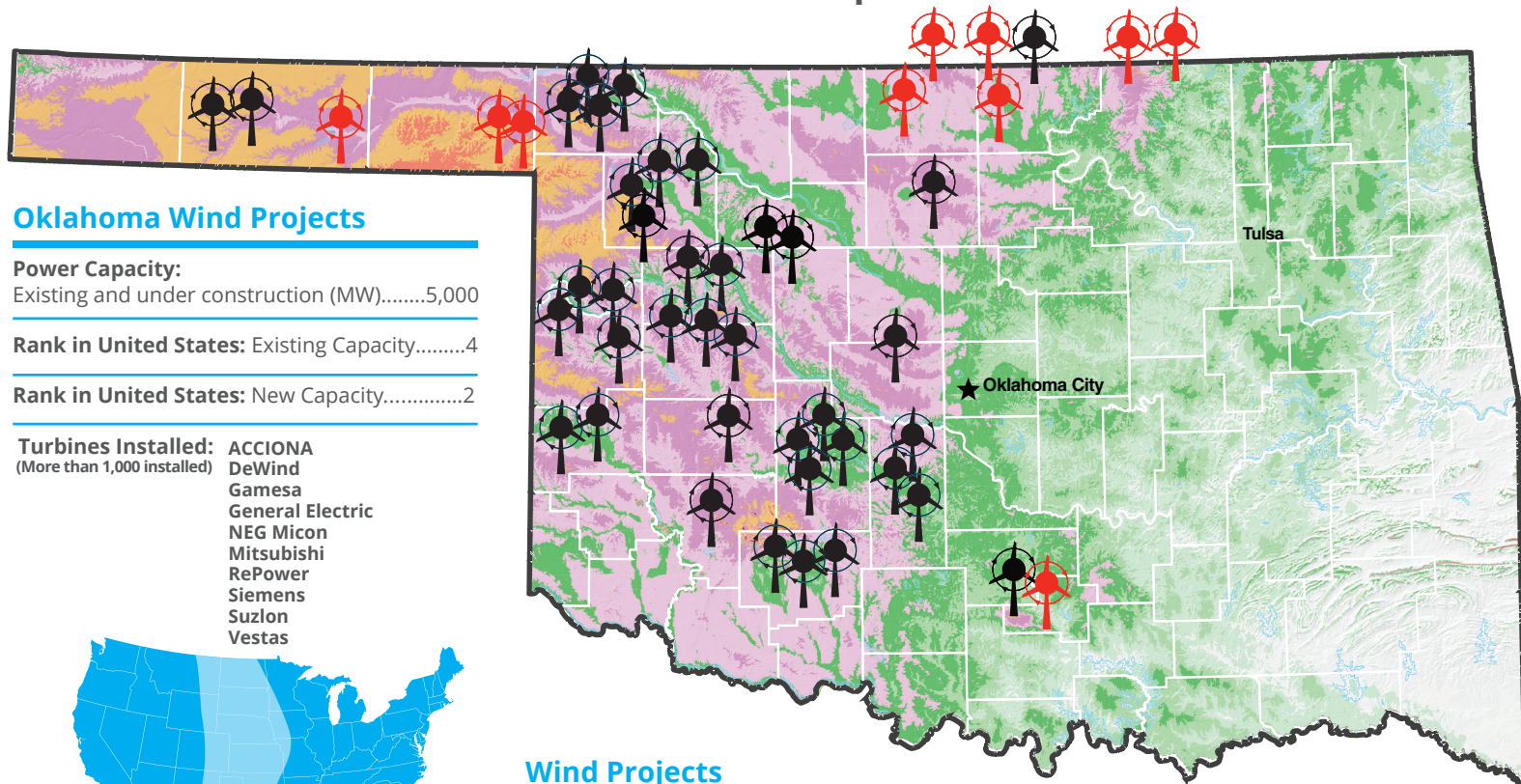
- Daniel J. Foley, CEO, ACCIONA Energy North America



17%

of Oklahoma's electricity comes from wind energy

Wind Resources of Oklahoma Mean Annual Wind Speed at 70 Meters



Oklahoma Wind Projects

Power Capacity:

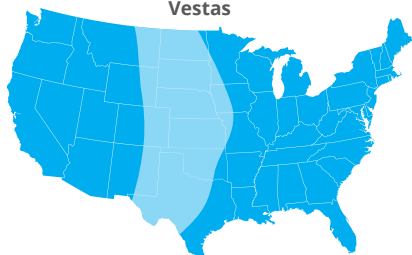
Existing and under construction (MW).....5,000

Rank in United States: Existing Capacity.....4

Rank in United States: New Capacity.....2

Turbines Installed: (More than 1,000 installed)

ACCIONA
DeWind
Gamesa
General Electric
NEG Micon
Mitsubishi
RePower
Siemens
Suzlon
Vestas



U.S. Wind Corridor

Wind Projects



Operational



Under Construction

Learn more about
Oklahoma's wind industry at:
OKcommerce.gov/energy

Companies across the globe are investing in renewable energy. Google purchases wind energy from wind farms in Oklahoma and the surrounding region to power its Oklahoma data center as the company works toward its goal of powering 100 percent of its operations with renewable energy.



IS: WIND ENERGY

From manufacturing to transportation, generation and transmission, the state of Oklahoma is Wind Energy.

Harness the Power of Oklahoma

Your Gateway to North America's Wind Corridor

Integrated Transportation Systems

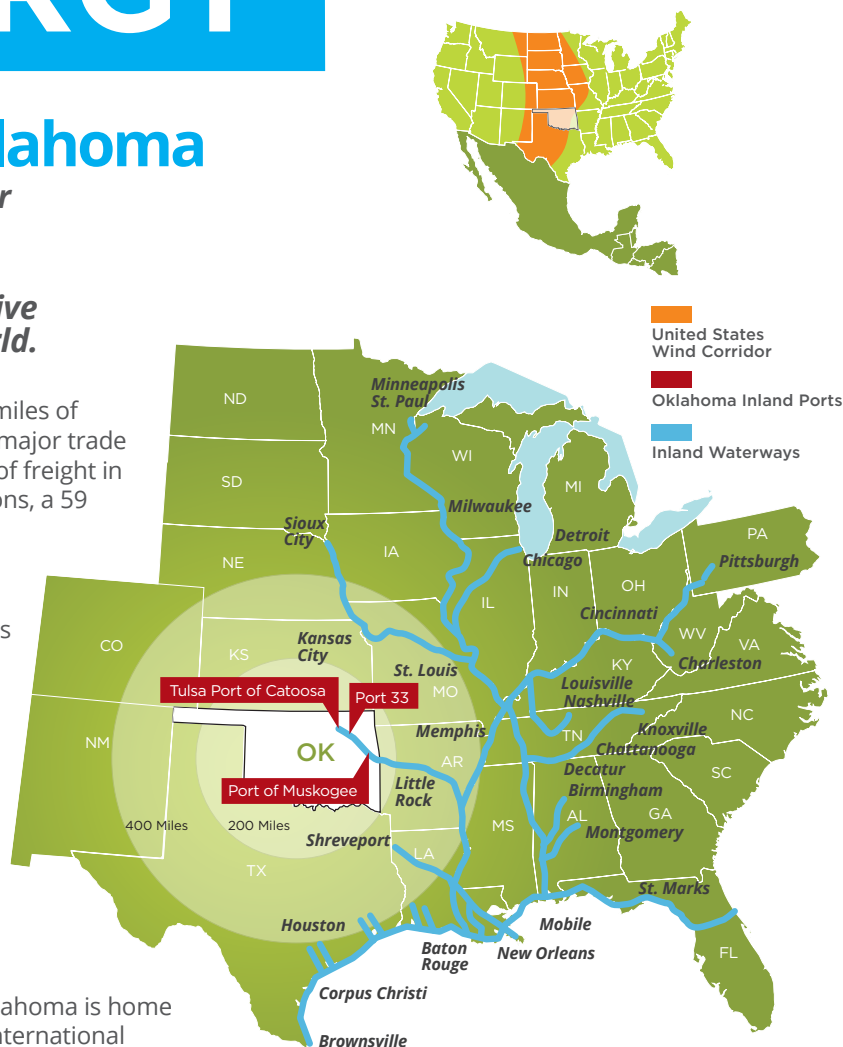
Oklahoma has the capacity to deliver and receive wind components from every corner of the world.

By Road Oklahoma industry is served by more than 12,000 miles of highway. The state is a hub for I-35, I-40, I-44, U.S. 69 and other major trade routes. In 2007, the trucking industry moved 484.5 million tons of freight in Oklahoma. By 2035, the amount is projected to grow to 769.5 tons, a 59 percent increase.

By Railway Oklahoma has 3,763 miles of operated railroad track, including 2,535 miles of Class I service. Major rail providers include Union Pacific, Burlington Northern Santa Fe and Kansas City Southern. Oklahoma's 22 freight railroads ship 300 million tons of freight annually.

By Water Oklahoma's strategic location is able to supply 20 states by waterway. With three inland ports, Oklahoma has ideal access to North America's growing wind clusters, including the U.S. south central states, East Coast, the upper Midwest, Great Lakes states and the Gulf of Mexico via the Mississippi River.

By Air Send or receive cargo from any point in the world. Oklahoma is home to 137 public-use airports in 123 different cities, including two international airports, both designated as Foreign Trade Zones, and three airports offering commercial services.

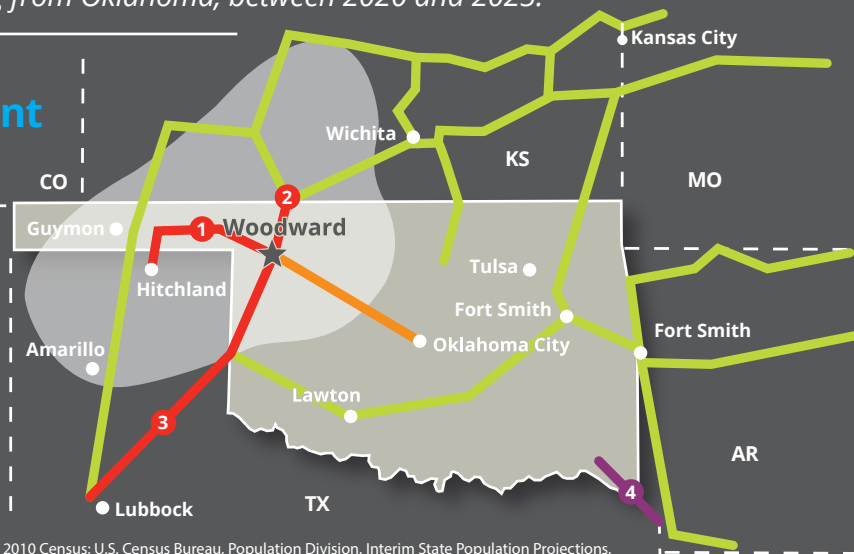


The Southwest Power Pool, a regional transmission organization, expects its nine-state region to produce 8,500 MW of wind power, with more than half coming from Oklahoma, between 2020 and 2025.

Transmission, a Powerful Component Making the investment in the infrastructure.

- Class 4 or higher wind power
- Woodward/OKC 345 kV transmission project (An OGE venture)
- Proposed Tallgrass double circuit 345 kV transmission project
- (A joint venture between OGE and ETA) Existing and proposed transmission lines

- Woodward to Hitchland, TX: Double-circuit 345 kV line
- Woodward to Medicine Lodge, KS: Double-circuit 345 kV line
- Woodward to Tuco, TX: 345 kV line
- Valliant, OK to Texarkana (TX-AK border): 345 kV line



Sources: Missouri Census Data Center, Circular Area Profiling System, using data from Summary File 1, 2010 Census; U.S. Census Bureau, Population Division, Interim State Population Projections, 2005; U.S. Census Bureau, 1990, 2000, and 2010 Census; Federal Aviation Administration, Aeronautical Information Services - Facility Aeronautical Data Distribution System, November, 2011; Oklahoma Department of Transportation - Oklahoma Freight & Passenger Rail Plan, 2011







WIND ENERGY: WHY OKLAHOMA?

- Oklahoma currently has nearly 5,000 MW existing or under construction.
- Central location in the heart of North America's wind corridor.
- Thriving, established manufacturing industry suited to wind component delivery.
- Skilled workforce trained specifically for wind energy manufacturing industry.
- Highly competitive cost of doing business.
- Assertive, business-friendly incentives.
- Integrated transportation systems.

Ready to Grow Your Business?

*Contact the Oklahoma Department of Commerce
and learn why Oklahoma is the best location
for your wind energy business.*



 twitter.com/OKcommerce
 facebook.com/OKcommerce
 linkedin.com/company/oklahoma-department-of-commerce
 youtube.com/OKcommerce

OKLAHOMA
DEPARTMENT OF COMMERCE

Domestic: 800-588-5959
International: 001-405-815-5187
900 N. Stiles Ave.
Oklahoma City, OK 73104
OKcommerce.gov/energy