

Sonoma County Charter SELPA

Special Education Local Plan

July 1, 2015

Steven D. Herrington, Ph.D., Superintendent
Catherine Conrado, Ed.D., SELPA Director

TABLE OF CONTENTS

I. Certification of Participation, Compatibility and Compliance Assurances.....	Page 3
II. Assurance Statement	Page 6
III. Governance and Administration.....	Page 14
a. Agreement for Participation	Page 22
IV. Policies / Administrative Regulations	Page 29
a. List of Sonoma County Charter SELPA Policies and Administrative Regulations.....	Page 30
V. Attachments	Page 31
a. List of 5 New and 15 Original Members of the Sonoma County Charter SELPA – 2015-16.....	Page 32

CHAPTER I
CERTIFICATION OF PARTICIPATION, COMPATIBILITY
AND COMPLIANCE ASSURANCES

Certification of Participation, Compatibility, and Compliance Assurances

1. Designate the Special Education Local Plan Area (SELPA) Option:			
<input type="checkbox"/> Single District		<input checked="" type="checkbox"/> Multiple District	
<input type="checkbox"/> District/County			

SELPA Code 4951	SELPA Name Sonoma County Charter SELPA	Application Date June 1, 2015	
SELPA Address 5340 Skylane Blvd	SELPA City Santa Rosa	SELPA Zip Code 95403	
SELPA Director (Print) Catherine Conrado, Ed. D		Telephone Number (707) 524-2752	E-mail cconrado@sonomaselpa.org

2. Certification by Agency Designated as Administrative and Fiscal Agency for this Program (Responsible Local Agency [RLA] or Administrative Unit [AU])			
--	--	--	--

RLA/AU Name Sonoma County	Name/Title of RLA Superintendent Steven Herrington, Ph. D.	Telephone Number (707) 524-2603	E-mail sherrington@scoe.org
RLA/AU Street Address 5340 Skylane Blvd	RLA/AU City Santa Rosa	RLA/AU Zip Code 95403	
Date of Governing Board Approval May 29, 2015			

3. Certification of Assurances

I certify that this plan has been adopted by the appropriate local board(s) (district/county) and is the basis for the operation and administration of special education programs; and that the agency(ies) herein represented will meet all applicable requirements of state and federal laws, regulations, and state policies and procedures, including compliance with the Individuals with Disabilities Education Act, 20 *United States Code (U.S.C.)* 1400 et.seq, and implementing regulations under 34 *Code of Federal Regulations, Parts* 300 and 303, 29 *U.S.C.* 705 (20), 794–794b, the Federal Rehabilitation Act of 1973, as amended, and the provisions of the California *Education Code (EC)*, Part 30 and Chapter 3, Division 1 of Title V of the *California Code of Regulations*.

Signature of RLA Superintendent	Date
--	-------------

4. Certification of Compatibility by the County Superintendent of Schools
--

Pursuant to *EC* Section 56140, this plan ensures that all individuals with exceptional needs residing within the county, including those enrolled in alternative education programs, including but not limited to, alternative schools, charter schools, opportunity schools and classes, community day schools operated by school districts, community schools operated by the county office of education, and juvenile court schools, will have access to appropriate special education programs and related services.

County Office of Education (COE) Name Sonoma County	Name of County Superintendent Steven Herrington, Ph. D.	Telephone Number (707) 524-2603	E-mail sherrington@scoe.org
COE Street Address 5340 Skylane Blvd	COE City Santa Rosa	COE Zip Code 95403	

Signature of County Superintendent or Authorized Representative	Date
--	-------------

5. Certification Of Community Advisory Committee

(Complete Form SED-LP-2)

For Department of Education Use Only

Recommended for Approval by the Superintendent of Public Instruction:		
Date: _____	By: _____	Date of Approval: _____

Certification of Participation, Compatibility,
and Compliance Assurances

SED-LP-2

Community Advisory Committee Certification		
CAC Signature and Verification:	Yes	No
I certify :		
The Community Advisory Committee (CAC) has advised the policy and administrative agency during the development of the Local Plan pursuant to California <i>Education Code (EC)</i> Section 56194.		
To ensure adequate and effective participation and communication pursuant to E.C. 56195.9, parent members of the CAC, or parents selected by the CAC, participated in the development and update of the Local Plan for special education.		
The plan has been reviewed by the CAC, and the committee had at least 30 days to conduct this review, prior to submission of the plan to the Superintendent pursuant to <i>EC</i> 56205(b)(6).		
The CAC has reviewed any revisions made to the Local Plan as a result of recommendations or requirements from the California Department of Education.		
Certifying Signature		
Signature of CAC Chairperson	Date	
Name of Chairperson (print)	Phone	

If you checked [✓] “No” for any of the above certifications, you may submit specific information, in writing, as to why you did not certify that the special education local plan area (SELPA) met the requirement. (Attach separate sheet, if necessary.) The Department will take this into consideration in its review of this Local Plan application.

CHAPTER II
ASSURANCE STATEMENT

Sonoma County Charter Special Education Local Plan Area

STEVEN D. HERRINGTON, Ph.D., Superintendent
CATHERINE CONRADO, Ed.D., SELPA Director

Special Education Local Plan Area Local Educational Agency Assurances

1. Free Appropriate Public Education (20 United States Code [U.S.C.] § 1412 (a)(1))

It shall be the policy of this local educational agency (LEA) that a free appropriate public education is available to all children residing in the LEA between the ages of three through 21 inclusive, including students with disabilities who have been suspended or expelled from school.

2. Full Educational Opportunity (20 U.S.C. § 1412 (a)(2))

It shall be the policy of this LEA that all pupils with disabilities have access to educational programs, nonacademic programs, and services available to non-disabled pupils.

3. Child Find (20 U.S.C. § 1412 (a)(3))

It shall be the policy of this LEA that all children with disabilities residing in the State, including children with disabilities who are homeless or are wards of the State and children attending private schools, regardless of the severity of their disabilities, and who are in need of special education and related services are identified, located and evaluated. A practical method is developed and implemented to determine which students with disabilities are currently receiving needed special education and related services.

4. Individualized Education Program (IEP) And Individualized Family Service Plan (IFSP) (20 U.S.C. § 1412 (a)(4))

It shall be the policy of this LEA that an individualized education program (IEP) or an individualized family service plan (IFSP) is developed, reviewed, and revised for each child with a disability who requires special education and related services in order to benefit from his/her individualized education program. It shall be the policy of this LEA that a review of an IEP will be conducted on at least an annual basis to review a student's progress and make appropriate revisions.

5. Least Restrictive Environment (20 U.S.C. § 1412 (a)(5))

It shall be the policy of this LEA that to the maximum extent appropriate, children with disabilities, including children in public or private institutions or other care facilities, are educated with children who are not disabled. Special class, separate schooling, or other removal of a student with disabilities from the general educational environment, occurs only when the nature or severity of the disability of the student is such that education in general classes with the use of supplemental aids and services cannot be achieved satisfactorily.

6. Procedural Safeguards (20 U.S.C. § 1412 (a)(6))

It shall be the policy of this LEA that children with disabilities and their parents shall be afforded all procedural safeguards throughout the provision of a free appropriate public education including the identification, evaluation, and placement process.

7. Evaluation (20 U.S.C. § 1412 (a)(7))

It shall be the policy of this LEA that a reassessment of a student with a disability shall be conducted at least once every three years or more frequently, if appropriate.

8. Confidentiality (20 U.S.C. § 1412 (a)(8))

It shall be the policy of this LEA that the confidentiality of personally identifiable data information and records maintained by the LEA relating to children with disabilities and their parents and families shall be protected pursuant to the Family Educational Rights and Privacy Act (FERPA).

9. Part C, Transition (20 U.S.C. § 1412 (a)(9))

It shall be the policy of this LEA that a transition process for a child who is participating in Early Education Programs (Individuals with Disabilities Education Act [IDEA], Part C) with an IFSP is begun prior to a toddler's third birthday. The transition process shall be smooth, timely, and effective for the child and family.

10. Private Schools (20 U.S.C. § 1412 (a)(10))

It shall be the policy of this LEA to assure that children with disabilities voluntarily enrolled by their parents in private schools shall receive appropriate special education and related services pursuant to LEA coordinated procedures. The proportionate amount of federal funds will be allocated for the purpose of providing special education services to children with disabilities voluntarily enrolled in private school by their parents.

11. Local Compliance Assurances (20 U.S.C. § 1412 (a)(11))

It shall be the policy of this LEA that the Local Plan shall be adopted by the appropriate local board(s) (district/county) and is the basis for the operation and administration of special education programs; and that the agency(ies) herein represented will meet all applicable requirements of state and federal laws and regulations, including compliance with the IDEA, the Federal Rehabilitation Act of 1973, Section 504 of Public Law, and the provisions of the California *Education Code*, Part 30.

12. Interagency (20 U.S.C. § 1412 (a)(12))

It shall be the policy of this LEA that interagency agreements or other mechanisms for interagency coordination are in effect to ensure services required for free appropriate public education are provided, including the continuation of services during an interagency dispute resolution process.

13. Governance (20 U.S.C. § 1412 (a)(13))

It shall be the policy of this LEA to support and comply with the provisions of the governance bodies and any necessary administrative support to implement the Local Plan. A final determination that an LEA is not eligible for assistance under this part will not be made without first affording that LEA with reasonable notice and an opportunity for a hearing through the State Educational Agency.

14. Personnel Qualifications (20 U.S.C. § 1412 (a)(14))

It shall be the policy of this LEA to ensure that personnel providing special education related services meet the highly qualified requirements as defined under federal law, including that those personnel have the content knowledge and skills to serve children with disabilities. This policy shall not be construed to create a right of action on behalf of an individual student for the failure of a particular LEA staff person to be highly qualified or to prevent a parent from filing a State complaint with the CDE about staff qualifications.

15. Performance Goals & Indicators (20 U.S.C. § 1412 (a)(15))

It shall be the policy of this LEA to comply with the requirements of the performance goals and indicators developed by the CDE and provide data as required by the CDE.

16. Participation In Assessments (20 U.S.C. § 1412 (a)(16))

It shall be the policy of this LEA that all students with disabilities shall participate in state and district-wide assessment programs. The IEP team determines how a student will access assessments with or without accommodations, or access alternate assessments, consistent with state standards governing such determinations.

17. Supplementation of State/Federal Funds (20 U.S.C. § 1412 (a)(17))

It shall be the policy of this LEA to provide assurances that funds received from Part B of the IDEA will be expended in accordance with the applicable provisions of the IDEA; will be used to supplement and not to supplant state, local, and other federal funds.

18. Maintenance of Effort (20 U.S.C. § 1412 (a)(18))

It shall be the policy of this LEA that federal funds will not be used to reduce the level of local funds and/or combined level of local and state funds expended for the education of children with disabilities except as provided in federal laws and regulations.

19. Public Participation (20 U.S.C. § 1412 (a)(19))

It shall be the policy of this LEA that public hearings, adequate notice of the hearings, and an opportunity for comment available to the general public, including individuals with disabilities and parents of children with disabilities, are held prior to the adoption of any policies and/or regulations needed to comply with Part B of the IDEA.

20. Rule of Construction (20 U.S.C. § 1412 (a)(20))

(Federal requirement for state educational agency only)

21. State Advisory Panel (20 U.S.C. § 1412 (a)(21))

(Federal requirement for state educational agency only)

22. Suspension/Expulsion (20 U.S.C. § 1412 (a)(22))

The LEA assures that data on suspension and expulsion rates will be provided in a manner prescribed by the CDE. When indicated by data analysis, the LEA further assures that policies, procedures, and practices related to the development and implementation of the IEPs will be revised.

23. Access to Instructional Materials (20 U.S.C. § 1412 (a)(23))

It shall be the policy of this LEA to provide instructional materials to blind students or other students with print disabilities in a timely manner according to the state-adopted National Instructional Materials Accessibility Standard.

24. Overidentification and Disproportionality (20 U.S.C. § 1412 (a)(24))

It shall be the policy of this LEA to prevent the inappropriate disproportionate representation by race and ethnicity of students with disabilities.

25. Prohibition on Mandatory Medicine (20 U.S.C. § 1412 (a)(25))

It shall be the policy of this LEA to prohibit school personnel from requiring a student to obtain a prescription for a substance covered by the Controlled Substances Act as a condition of attending school or receiving a special education assessment and/or services.

26. Distribution of Funds (20 U.S.C. § 1411(e),(f)(1–3))

(Federal requirement for state educational agency only)

27. Data (20 U.S.C. § 1418 a–d)

It shall be the policy of this LEA to provide data or information to the CDE that may be required by regulations.

28. Reading Literacy (State Board requirement, 2/99)

It shall be the policy of this LEA that in order to improve the educational results for students with disabilities, special education local plan area (SELPA) Local Plans shall include specific information to ensure that all students who require special education will participate in the California Reading Initiative.

29. Charter Schools (California *Education Code* 56207.5 (a–c))

It shall be the policy of this LEA that a request by a charter school to participate as an LEA in a SELPA may not be treated differently from a similar request made by a school district.

In accordance with Federal and State laws and regulations, Sonoma County Charter SELPA certifies that this plan has been adopted by the appropriate local board(s) (district/county) and is the basis for the operation and administration of special education programs; and that the agency herein represented will meet all applicable requirements of state and federal laws, regulations and state policies and procedures, including compliance with the Individuals with Disabilities Education Act, 20 USC 1400 et.seq, and implementing regulations under 34 CFR, Parts 300 and 303, 29 USC 794, 705 (20), 794- 794b, the Federal Rehabilitation Act of 1973, as amended, and the provisions of the California Education Code, Part 30 and Chapter 3, Division 1 of Title V of the California Code of Regulations.

Be it further resolved, the LEA superintendent shall administer the local implementation of procedures, in accordance with state and federal laws, rules, and regulations, which will ensure full compliance.

Furthermore, the LEA superintendent ensures that policies and procedures covered by this assurance statement are on file at the Local Education Agency and the SELPA office.

Adopted this 29th day of May, 2015.

Yeas: _____ Nays: _____

Signed: _____,
Steven Herrington, Ph. D.
Superintendent, Sonoma County Office of Education

CHAPTER III
GOVERNANCE AND ADMINISTRATION

GOVERNANCE AND ADMINISTRATION

PURPOSE

The Sonoma County Charter SELPA is composed of local educational agency charters (LEAs) located outside the geographic boundaries of Sonoma County. The Sonoma County Charter SELPA has designated the Office of Education as the Responsible Local Agency (RLA) and the County Superintendent of Schools as the Superintendent of the RLA.

The function of the Special Education Local Plan Area and participating agencies is to provide a quality educational program appropriate to the needs of each eligible child with a disability who is served by the Charter SELPA.

All such programs are operated in a cost effective manner consistent with the funding provisions of Education Code Section 56700 et seq, IDEA, all other laws and policies, and the procedures of the Sonoma County Charter Special Education Local Plan Area.

CHANGES IN THE GOVERNANCE STRUCTURE

Any changes in the governance structure of the Sonoma County Charter Special Education Local Plan Area, including the dividing of the SELPA into more than one operating entity, changing the designation of and/or responsibilities of the Responsible Local Agency, are subject to specific Provisions of Education Code Sections 56140, 56195, et seq., 56195.7 et seq., 56200 et seq., and 56205 et seq.

1. Any local agency which is currently designated as a Local Education Agency (LEA) participating in the Sonoma County Charter Local Plan for Special Education may elect to pursue an alternative option from those specified in Education Code Section 56195.1 by notifying the appropriate county superintendent at least one year prior to the date the alternative plan would become effective (E.C. 56195.3(b)).
2. Approval of a proposed alternative plan by the appropriate county superintendent may be based on the capacity of the LEA Charter(s) to ensure that special education programs and services are provided to all children with disabilities. (E.C. 56140(b))
3. If an alternative plan is disapproved by a county superintendent, the county office shall return the plan with comments and recommendations to the LEA charter(s). The charter or charters participating in the alternative plan may appeal the decision to the Superintendent of Public Instruction. (E.C. 56140 (b) (2))
4. Any changes in the designation of the responsible local agency for the Sonoma County Charter Special Education Local Plan Area must conform to the above code provisions and the administrative provisions and the administrative provisions for approval as specified in the Local Plan.

Disagreements among the participating agencies of the Sonoma County Charter Local Plan are attempted to be resolved within the standard operating procedures and committee structure. If not resolved at a lower committee level, the issue would come to the Sonoma County Charter Chief Executive Officers' (CEO) Council for discussion and resolution.

GOVERNANCE STRUCTURE OF THE PLAN

California Education Code Section 56200 (c) (2) requires that the Local Plan, "specify the responsibilities of each participating county office and district governing board in the policy-making process, the responsibilities of the superintendent of each participating district and county in the implementation of the plan, and the responsibilities of district and county administrators of special education in coordinating the administration of the plan." In accordance with this provision, the Sonoma County Charter SELPA has developed the following governance structure, policy development and approval process.

RESPONSIBILITIES OF EACH GOVERNING BOARD IN THE POLICY- MAKING PROCESS AND PROCEDURES FOR CARRYING OUT THE RESPONSIBILITY

The governing board for each LEA charter and the County Superintendent of Schools approves the Agreement for Participation, Representations and Warranties, and the Local Plan for Special Education. As described within those documents, the Boards of Directors of the charter schools delegate the administrative policy-making process and procedures for carrying out that responsibility to the governance structure of the Charter SELPA.

RESPONSIBILITIES OF CHIEF EXECUTIVE OFFICERS – CHARTER EXECUTIVE COMMITTEE

The Charter Executive Committee, which includes the SELPA Director, approves policies and makes recommendations on special education financial matters to the Charter CEO Council. The Executive Committee is made up of members of the CEO Council who are selected by the CEO Council by majority vote. The Sonoma County Superintendent of Schools serves as an ex-officio member of the Executive Committee.

The Charter Executive Committee is responsible for:

- A. Approval of policy for special education programs and services which relate to the Charter SELPA .
- B. Approval of requests to the risk pool as appropriate.
- C. Addressing specific needs of individual LEA Charters as the need arises;
- D. Organizing the subcommittees as necessary to meet special needs of the Charter SELPA;
- E. Receiving and reviewing input from the Community Advisory Committee.

Minutes of the Executive Committee meetings are transmitted to the full membership of the Charter CEO Council. In addition, financial issues regarding special education and other issues which it felt should be considered by the CEO Council shall be placed on the agenda for discussion and/or action of the scheduled meetings.

CHARTER CHIEF EXECUTIVE OFFICER’S (CEO) COUNCIL

A Charter CEO Council is in operation for the SELPA and consists of the Chief Executive Officers of each LEA. Organizations that operate more than one charter school may have a single representative for all schools operated, but such representative shall have a number of votes equal to the number of schools represented. This group meets regularly with the County Superintendent of Schools and/or designees to direct and supervise the implementation of the Local Plan.

RATIONALE FOR A CHARTER SELPA

Charter schools are required to provide special education programs and services for students who attend their schools. Charter schools must be members of a Special Education Local Plan Area. The State Board of Education allows for charter schools to participate as an LEA in an out-of-geographic area SELPA. The State Board of Education also recognizes the need for Charter SELPAs in various regions throughout California.

The Sonoma County Charter SELPA effectively and efficiently supports the membership of LEA charter schools and their implementation of appropriate and compliant special education services. This Local Plan addresses the required elements needed to support the charter schools.

Charter School Admission Criteria:

It is the intent of the Sonoma County Charter SELPA to provide options for Charter Schools in terms of SELPA membership. While it is always preferable for a Charter School to participate with their geographic SELPA, the Charter SELPA has been developed to allow for a viable alternative for SELPA membership. Therefore, there are specific criteria which must be met in order for a Charter School to be considered for membership in the Sonoma County Charter SELPA.

1. For existing Charter Schools, the following guidelines must be met:
 - a. Charter Schools must give a one-year notice of intent to leave their current SELPA. Schools must also notify the California Department of Education Special Education Division.
 - b. During the one-year notice period, the Charter School must work collaboratively with its geographic SELPA and the Sonoma County Charter SELPA to mitigate the differences in order to determine if remaining in the geographic SELPA is a viable alternative. These attempts will be directly facilitated by Sonoma County Charter SELPA Administrative staff.
 - c. The reason for the Charter School to leave their geographic SELPA must not primarily be a fiscal decision. The primary reasons must be a desire for increased access to appropriate Special Education services and a desire to implement quality programs for students with disabilities.
 - d. The Sonoma County Charter SELPA firmly believes in adherence to State Standards for all students. Therefore Charter Schools wishing to join this SELPA must ensure that State Standards are strictly followed in their programs. Charter SELPA members will be subject to the same self-review and monitoring process as the Charter SELPA in general.
2. Admission to the Charter SELPA
 - a. Process
Charter Schools will follow Education Code requirements when submitting applications for review to the Sonoma County Charter SELPA Review Committee. The Sonoma County SELPA Charter Review committee is comprised of:

- Sonoma County Superintendent of Schools
- a representative from the current Charter SELPA Executive Committee
- a representative of Charter Schools designated by the County Superintendent for Year 1 of the SELPA
- The CEO Council will designate the Charter Schools representative to this committee in Year 2 and beyond.

b. **Criteria for Admission**

The Sonoma County Charter SELPA Review Committee will develop specific criteria by which each application will be reviewed and rated. The criteria will include legal requirements and key indicators that would ensure that the Charter School is capable of implementing the legal requirements within the Local Plan and to provide a quality educational program for all children.

FULL CONTINUUM OF SERVICES

Both state and federal law provides that students with exceptional needs are entitled to a free, appropriate public education (FAPE) that includes special education and related services to meet their unique needs in the least restrictive environment (LRE). Each SELPA member must ensure that all children served under their jurisdiction who have disabilities, regardless of the severity of their disability, and who are in need of special education and related services, are identified, located, evaluated and served. Therefore, a full continuum of services are available within the Charter SELPA.

Members of the Charter SELPA are expected to be somewhat diverse geographically. Given this fact, the plan provides funding per the Sonoma Charter SELPA Allocation Plan to the Charter Schools so that they may appropriately provide for all the students with special education needs attending their schools. This obligation can be met in several ways, which may include:

1. Hire appropriately credentialed special education staff to provide necessary services;
2. Contract with its geographic SELPA to provide the necessary services;
3. Contract with a private entity to provide all necessary personnel to appropriately implement IEPs.

These methods of providing necessary services may be used by a single school in the Charter SELPA, or several schools within the Charter SELPA could join together to provide the services.

EVALUATION

E. C. 56600 was written, in part, to ensure that SELPAs participate with all State efforts to provide for ongoing comprehensive evaluation of special education programs in order to refine and improve programs, policies, regulations, guidelines, and procedures on a continuing basis, and to assess the overall merits of these efforts.

The Sonoma County Charter SELPA annually submits all information required by the California Department of Education, Special Education Division, in this effort, including statistical data, program information, and fiscal information related to the programs and services for children with disabilities in the Sonoma County Charter SELPA.

The Charter SELPA Administration is responsible for collecting all data required by the California Department of Education related to special education budgets and services, and reports them annually.

SELPA staff supports all members of the Charter SELPA in the collection of data related to compliance, due process procedures, availability of services, key performance indicators, etc., as needed.

DATA COLLECTION AND DEVELOPMENT OF MANAGEMENT INFORMATION SYSTEMS

California Department of Education (CDE) requires of each SELPA the collection of specified data in such a manner as to be aligned with the CASEMIS – California Management Information System.

The Charter SELPA has adopted and implemented a data collection and storage system that provides for the management and reporting of required data for state and federal systems. The SELPA continues to work with the CDE's CASEMIS to collect and report all required data related to special education student, fiscal and program services, and to provide other pertinent information necessary for the operation of the SELPA.

The Charter SELPA staff supports all the member LEA charter schools in the Charter SELPA in their collection and reporting of required data.

The Charter SELPA staff strives to support a system which is responsive to the data needs of the member LEA charter schools.

The Charter SELPA staff implements a continuous improvement model of data collection.

PROVISION FOR ONGOING REVIEW OF PROGRAMS

The State has in place a system for review of the special education programs in the districts. It is the responsibility of the SELPA to support the delivery of effective programs and services in its districts, to support a continuum of appropriate service options, to improve the quality of the programs offered, and to monitor them and participate in review processes, including the Annual Performance Reports and other required State measures. The SELPA will also monitor compliance with the Procedural Safeguards, complaint processes, mediation and due process procedures.

The Sonoma County Charter SELPA endeavors first to provide adequate information, resources and support to all member LEA charters, so that they may deliver compliant, quality services. Further, the Charter SELPA staff, under the direction of the Executive Committee and CEO Council and in conjunction with CAC, participates in all State review processes and any local review processes to ensure that appropriate and necessary services are offered for all children with disabilities and to support continuous improvement of those services.

The SELPA ensures that adequate information related to all areas of compliance is available to all the charter LEA members.

The SELPA ensures the availability of a full continuum of options, supplemental aids and services, and regionalized programs, for all children with disabilities, including low

incidence, severe and non-severe.

PROCESS FOR ALLOCATING PROGRAM SPECIALIST SERVICE THROUGHOUT THE REGION

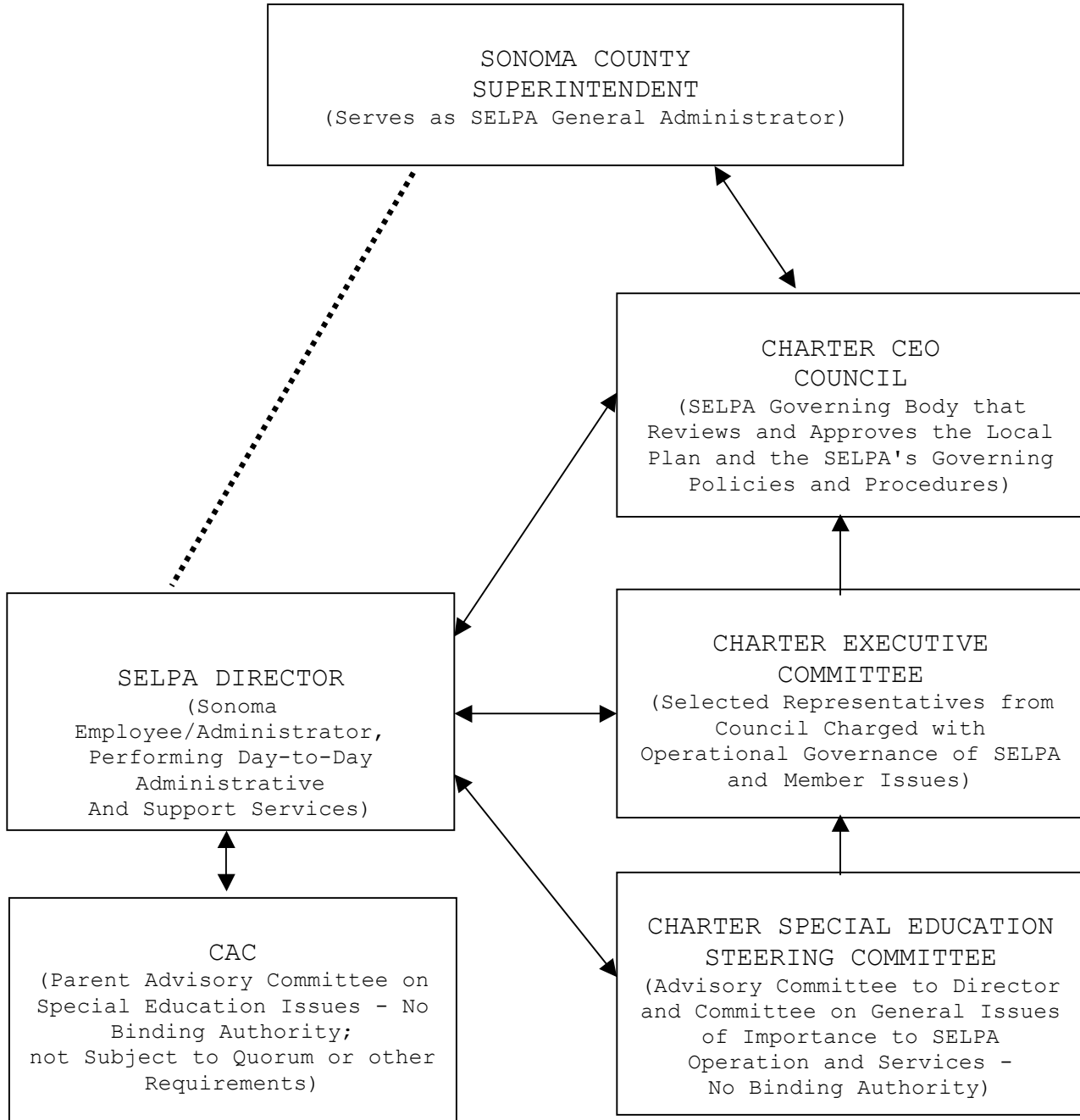
The SELPA currently employs program specialist(s). In addition, in accordance with Education Code §56780, all coordination responsibilities for program specialist services as outlined are fully supported through the governance structure of the SELPA. This includes the administrative staff, program specialist services, Charter Special Education Steering Committee, Charter Executive Committee, and Charter CEO Council.

Under the direction of the SELPA Director, the duties of program specialists are those specified in Education Code §56368 and the Local Plan:

- A. Assist special education service providers, Education Specialists, and Designated Instruction and Service instructors in the planning and implementation of individual education programs for students with disabilities.
- B. In conjunction with the SELPA Director, review and monitor compliance and program effectiveness.
- C. Provide and conduct school staff development, program development, and innovation or special methods and approaches.
- D. Provide coordination, consultation, and program development in areas to which the program specialist is assigned.
- E. Assure that pupils have full educational opportunity, regardless of the Local Education Agency in the Special Education Local Plan Area.
- F. Participate in I.E.P.s at request of Local Education Agency or parent.
- G. Assist Local Education Agencies with non-public, non-sectarian and state school placements when requested.

Safeguards for the assurance of appropriate use of regionalized funds are the responsibility of the SELPA Director and as approved by the governance structure. Program Specialist(s) are employed by the RLA and supervised by the SELPA Director.

Sonoma County Charter SELPA Governance Flow Chart



Legend

- Communication
- Responsibility

AGREEMENT FOR PARTICIPATION

SONOMA COUNTY CHARTER SELPA

The Sonoma County Charter Special Education Local Plan Area (SELPA) as authorized by the California State Board of Education assists California charter schools that have successfully completed the SELPA membership process and have signed this Agreement for Participation (Agreement) which are deemed Local Educational Agencies pursuant to Education Code Section 47641, in meeting their obligations to provide special education and related services (each term as defined in 20 U.S.C. Section 1401 and the applicable rules, regulations and interpretive guidance issued thereunder and collectively referred to as Services) to applying or enrolled students actually or potentially entitled to Services under applicable state and federal laws and regulations (Students). SELPA Membership also ensures compliance with the LEA Member's obligations under Education Code Sections 56195, et. seq.

It is the goal of the Sonoma County Charter Special Education Local Plan Area (SELPA) that all charter pupils with exceptional needs within the SELPA receive appropriate special education programs. It is the intent of the Charter SELPA that special education programs be coordinated and operated in accordance with the governance structure.

The respective Charter Schools who are signatories hereto, the Sonoma County Office of Education Superintendent of Schools, and the Sonoma County Charter SELPA, mutually agree as follows:

DEFINITIONS

LEA: As described in Education Code Section 56026.3., shall refer to a specific LEA Member Charter School or Charter School development organization as appropriate.

RLA: Responsible Local Agency, as described in Education Code Section 56030. Federal Regulations use the term "Administrative Unit" or "AU". For purposes of this Agreement, the Sonoma County Office of Education shall be the RLA or AU for the Sonoma County Charter SELPA.

Charter SELPA CEO Council: This group is composed of a representative from each Charter School in the Charter SELPA at the Chief Executive Officer level. Organizations that operate more than one Charter School at their option may have a single representative for all schools operated, but such representative shall have a number of votes equal to the number of schools represented. This group would meet regularly with the County Superintendent of Schools to direct and supervise the implementation of the Local Plan.

Charter Executive Committee: The Charter Executive Committee is comprised of representatives from the Charter SELPA CEO Council and shall include the Sonoma County Superintendent and staff designees.

Efforts will be made to ensure the committee has broad representation in a variety of areas; e.g. various geographical areas of the Charter SELPA, CMO representation, single charter, large charter, small charter, original founding members, new members. This committee makes recommendations to the CEO Council on fiscal and policy matters.

Charter Special Education Steering Committee: This Steering Committee serves in an advisory capacity to the Charter SELPA Director. Each Charter School is entitled to select one representative for this committee – either a teacher or an administrator. Representatives commit to a full year of service, which would include meeting regularly for the purpose of advising the Charter SELPA Director and receiving and disseminating direct program/instructional information.

Special Education Community Advisory Committee – CAC: Each Charter School shall be entitled to select a parent representative to participate in the Special Education Community Advisory Committee to serve staggered terms in accordance with E.C. § 56191 for a period of at least two years. Selected parents will be the parent of a child with a disability. This group will advise the Charter SELPA Director on the implementation of the Sonoma County Charter SELPA Local Plan for Special Education in Charter Schools (“Local Plan”) as well as provide local parent training options in accordance with the duties, responsibilities and requirements of E.C. §§ 56190-56194.

Because of the geographic diversity anticipated within the Sonoma County Charter SELPA many meetings will be conducted through the use of teleconferencing or video conferencing.

IEP (Individualized Education Program): A plan that describes the child's current abilities, sets annual goals and instructional objectives, and describes the education services needed to meet these goals and objectives in accordance with E.C. § 56032.

IEP Team: A group of team members, as defined in Education Code § 56341, who meet for the purpose of determining student eligibility for special education and developing, reviewing, or revising a pupil's IEP and recommendations for placement.

LEA MEMBER RESPONSIBILITIES AND DUTIES:

Each LEA agrees that it is subject to the following nondelegable responsibilities and duties under this Agreement, all adopted SELPA policies and procedures, the Local Plan, and governing federal and state laws and regulations (collectively, LEA Member Obligations), compliance with which is a condition precedent to membership, and continuing membership, in the SELPA.

The LEA Member as a participant in the Local Plan shall perform the following and be exclusively responsible for all costs, charges, claims and demands arising out of or related to its own pupils and its respective programs operated by the LEA Member:

- A. Adhere to the Local Plan, Policies and procedures as adopted by the Charter CEO Council.
- B. Select, compensate and determine the duties of the special education teachers, instructional aides, and other personnel as required to conduct the program specified in the Local Plan, and in compliance with state and federal mandates; Charter Schools may contract for these services;
- C. Conduct and/or contract those programs operated by the LEA Member in conformance with the Local Plan and the state and federal mandates;
- D. Organize and administer the activities of the IEP Teams, including the selection of the LEA Member staff and who will serve as members of the IEP Team in conformance with the Education Code Section 56341 and in compliance with the Local Plan;
- E. Organize and maintain the activities of the Resource Specialist Program in conformance with Education Code Section 56362; the Designated Instruction and Service in conformance with Education Code Section 56363; and Special Classes

- and Centers in conformance with Education Code Section 56364.1 and 56364.2; and in compliance with the Local Plan;
- F. Provide facilities as required to house the programs conducted by the LEA;
 - G. Provide for the acquisition and distribution of the supplies and equipment for the programs conducted by the LEA Member;
 - H. Provide and/or arrange for such transportation services as may be required to provide the special education programs specified that are conducted by the LEA Member;
 - I. Cooperate in the development of curricula for the classes and the development of program objectives with the AU. Cooperate in the evaluation of the programs as specified in the Local Plan, with the AU;
 - J. Cooperate in the development of the procedures and methods for communicating with the parents and/or legal guardians of the individuals served in conformance with the provisions of the Local Plan with the AU;
 - K. Provide for the documentation and reporting of assessment procedures used for the placement of individuals and the security thereof. Provide for the continuous review of placements and the assessment procedures employed to insure their effectiveness and applicability, and insure the continued implementation and compliance with eligibility criteria;
 - L. Provide for the integration of individuals educated under this agreement into the general education school programs and provide for evaluating the results of such integration according to specifications of the Local Plan;
 - M. Conduct the review of individual placements requested by the parents and/or legal guardians of the individual in accordance with the Local Plan;
 - N. Prepare and submit all required reports, including reports on student enrollment, program expenditures, and program evaluation;
 - O. Designate a person to represent the LEA Member on the Charter Special Education Steering Committee to monitor the implementation of the Plan and make necessary recommendations for changes and/or modifications;
 - P. Designate a representative for the LEA Member to serve on the Special Education Community Advisory Committee, in accordance with Education Code Section 56192-56193 and pursuant to the procedures established in the Local Plan;
 - Q. Designate the LEA Member Superintendent/CEO or School Leader by whatever name designated to represent the LEA Member on the Charter CEO Council to supervise and direct the implementation of the Plan;
 - R. Receive special education funding from Sonoma County in accordance with the Charter SELPA's Allocation and Budget Plan.
 - S. It is understood that except as otherwise may be specifically agreed from time to time the RLA shall have no responsibility for the operation of any direct educational program service of any kind.
 - T. Each LEA Member shall annually provide RLA with LEA Member's annual audit report, as conducted according to Education Code Section 47605(b)(5)(l). Annual submission shall be made annually, no later than January 31st. LEA Member further agrees to forward RLA copies of State Controller's Office communications regarding audit report corrective actions and a corrected audit report, if applicable. Should an LEA Member be the subject of a FCMAT report (or other agency review) that indicates concern with inappropriate use of funds, financial insolvency concerns, or operational concerns, the LEA Member shall notify RLA and provide the RLA with a copy of the report.
 - U. An LEA Member contracting for external Services, consistent with definition shall do so only with duly licensed and authorized entity or individual. The

contract for Services executed by the LEA Member and the external consultant or contractor shall include a clause stating the contractor or consultant agrees to defend and indemnify the LEA Member, and the SELPA, RLA, the Superintendent, and other Indemnified Parties in response to any claim arising from the contractor's or consultant's actual or alleged failure to provide Services in conformity with these obligations.

With respect to external services and/or Student placements, the LEA Member shall affirmatively monitor, assess, and to the extent necessary, intervene or manage such external placements or Services in conformity to ensure that the LEA Member's Obligations to the Student are still being met.

AU/RLA DUTIES AND RESPONSIBILITIES:

Pursuant to the provisions of Education Code Section 56030 et seq., the AU shall receive and distribute regionalized service funds, provide administrative support, and coordinate the implementation of the Sonoma County Local Plan for Special Education in Charter Schools participating in the Charter SELPA. In addition, the AU shall perform such services and functions as required to accomplish the goals set forth in the plan. Such services include, but are not limited to, the following:

- A. Act as agent for Charters participating in the Plan as specified in the Local Plan. Receive, compile and submit required enrollment reports and compute all special education apportionments as authorized under Education Code Section 56836 et seq. Receive data from each LEA Member to compile and submit budgets for the programs and monitor the fiscal aspects of the program conducted. Receive the special education apportionments of Regionalized Services as authorized under Education Code Section 56836.02;
- B. Coordinate with LEA Members in the development and implementation of a systematic method for referring and placing individuals with exceptional needs who reside in the Charter, including the methods and procedures for communication with the parents and/or guardians of the individuals according to procedures in the Local Plan;
- C. Assist LEA members in assessing data and reviewing interventions prior to a referral to assess for special education. Review implementation of standards based curriculum and provide for continuous evaluation of the special education programs;
- D. Coordinate the organization and maintenance of the Special Education Community Advisory Committee (CAC) as part of the responsibility of the AU to coordinate the implementation of the plan pursuant to Education Code Section 56030. Provide for the attendance of designated members of the AU's staff at all regularly scheduled Special Education Community Advisory Committee meetings;
- E. Coordinate community resources with those provided by LEA Member and the AU, including providing such contractual agreements as may be required;
- F. Organize and maintain the Charter Special Education Steering Committee to monitor the operations of the Local Plan and make recommendations for necessary revisions, including, but not limited to:
 - 1. Monitoring the application of eligibility criteria throughout the Local Plan area;
 - 2. Coordinating the implementation of the transportation for special education pupils;
 - 3. Coordinating the system of data collection, management, and evaluation;

4. Coordinating personnel development and curriculum development for special education, including alternative dispute resolution;
 5. Coordinating the identification, referral, assessment, instructional planning, and review procedures, including the communication with parents and/or legal guardians regarding rights and responsibilities for special education;
 6. Developing interagency referral and placement procedures; and,
 7. Evaluating the effectiveness of special education programs.
- G. Support the Charter SELPA CEO Council by attendance and participation of the County Superintendent and/or designees at meetings;
 - H. Provide for regular inservice training for AU and LEA Member staff responsible for the operation and conduct of the Local Plan. Regular inservice training may also be provided to CAC representatives;
 - I. Provide the method and the forms to enable the LEA Member to report to the AU on student enrollment and program expenditures. Establish and maintain a pupil information system;
 - J. Provide reasonable assistance to the LEA Member upon request from LEA Member administration, or individual cases, including but not limited to:
 1. Complaint issues;
 2. Hearing issues; and
 3. Identification of appropriate programs for specific pupils.
 - K. Perform other services reasonable and necessary to the administration and coordination of the Plan;
 - L. Receive special education funding and distribute funds in accordance with the Charter SELPA Allocation and Budget Plan.
 - M. Schedule a public hearing at the Sonoma County Office of Education for purposes of adopting the Annual Service Plan and Budget Plan.

PROVISIONS OF THE AGREEMENT

- A. Consistent with this Agreement each LEA Member shall have full and exclusive authority and responsibility for classifying employment positions within their respective LEA Member.
- B. No LEA Member may enter into any agreement, MOU or other undertaking that would bind or limit independent decision making on the same or similar matters by any other LEA Member.
- C. The managerial prerogatives of any participating LEA Member shall not be infringed upon by any other participating LEA Member except upon mutual consent of an affected LEA Member(s), or unless as otherwise set forth by this Agreement.
- D. Any LEA Member may terminate its Charter SELPA membership at the end of the fiscal year next occurring after having provided twelve months prior written notice as follows:
 1. Prior initial written notice of intended termination to the RLA of at least one year, and
 2. Final written notice of termination to the RLA no more than six months after the LEA Member's initial notice of intended termination.

The RLA County Superintendent of Schools may terminate any LEA Member's Charter SELPA membership at the end of the fiscal year next occurring after having provided twelve months prior written notice as follows:

1. Prior initial written notice of intended termination to the LEA Member of at least one year, and
 2. Final written notice of termination to the LEA Member no more than six months after the RLA's initial notice of intended termination.
- E. Funding received by a charter is subject to the elements of the allocation plan. The allocation plan is updated on an annual basis and approved by CEO council. Funding is subject to administrative fees, set-aside provisions, differentiated funding in year 1 and year 2, and potential recapture provisions if funds are not spent. All of these details are outlined in the allocation plan document. Participants agree by signing this document to agree to the provisions of the allocation plan.
- F. In accordance with their needs the LEA Members and the AU in Sonoma County shall continue to manage and operate programs in their respective LEAs in accordance with Education Code Section 56172.
- G. The Charter CEO Council shall have the responsibility and right to monitor and correct any special education matter which affects the Special Education Local Plan Area. The AU staff shall be responsible for coordinating and informing the governance structure on any such matter.
- H. The LEA Members and the AU will maintain responsibility for program administration for the service they provide. All administrative requirements that govern that unit will be in effect regarding special education services. The Superintendent and/or Administrators of Special Education in each LEA Member and in the AU will be responsible for the daily operation of their respective programs.
- I. The student program placement is and shall remain the responsibility of the respective LEA Member. Student admission and transfer shall be determined in accordance with the respective charter, SELPA and Sonoma County Board policies and the respective charter, SELPA and Sonoma County procedures established in accordance with the identification, assessment, instructional planning and placement set forth in the Local Plan. Nothing contained herein shall be interpreted as providing automatic transfer rights to parents or students. The charter enrolling any pupil shall have the exclusive right to approve placement in any other agency. Each LEA of service shall have the right to determine if such LEA is able to provide a free, appropriate public education for the pupil.
- J. Supervision and other incidents of employment of special education staff will be the responsibility of the respective LEA Member or AU. Each LEA Member and the RLA shall have full exclusive and independent control over the development, change, implementation and application of all evaluation procedures their respective LEA Member or in the RLA as the case may be. All LEA Members shall have full and exclusive authority to recruit, interview, and hire special education staff as needed by such LEA Member to provide continuity and service to their special education students.
- K. The Charter Executive Committee shall review and make Allocation Plan recommendations. The Allocation Plan defines the distribution of State and Federal funds within the SELPA for the costs of providing special education programs.. The Charter CEO Council shall approve all changes. There is a legal requirement for a public hearing and adoption of an annual service and budget plan. This shall be done annually by the Charter CEO Council. This SELPA will not have any property tax allocations.

WARRANTIES AND REPRESENTATIONS:

As a condition of membership, each LEA Member warrants and represents that at no time during such LEA Member's membership in the Sonoma County Charter SELPA shall any such LEA Member, directly or indirectly, provide special education funding for the benefit of a for-profit entity. All Funding provided through the Sonoma County Charter SELPA shall be treated as a restricted funding source to be expended only for special education or special education services. Nothing contained herein shall be interpreted as prohibiting any LEA Member from expending funds for non-public agency or non-public school purposes for the benefit of children served.

STANDARD OF CONDUCT

Each LEA Member, at all times, shall conduct itself in such a manner as to act in the best interests of all other Charter SELPA members. LEA Members shall not engage in any activity or enterprise which would tend to injure or expose the Charter SELPA or any of its members to any significant risk of injury or any kind. No LEA Member shall undertake to independently act on behalf of the Charter SELPA or any of its members without express written authorization of the Charter SELPA.

RESERVATION OF RIGHTS

The RLA shall not be responsible for any LEA Member or Charter SELPA obligations or duties of any kind or nature except as explicitly set forth in this agreement.

INDEMNIFICATION AND HOLD HARMLESS

To the fullest extent allowed by law, each LEA Member agrees to defend, indemnify, and hold harmless the SELPA and its individual other Members, Sonoma County Office of Education, and the Superintendent, and each of their respective directors, officers, agents, employees, and volunteers (the Indemnified Parties), from any claim or , demand, damages, losses or expenses (including, without limitation, reasonable attorney fees) that arises in any manner from an actual or alleged failure by a LEA Member to fulfill one or more of the LEA Member's Obligations except to the extent that such suit arises from the RLA's negligence.

Further, the Sonoma County Charter SELPA shall be responsible for holding harmless and indemnifying the RLA for any costs of any kind or nature arising out of or related to this agreement other than as specifically contemplated herein, except to the extent that such cost arises from the RLA's negligence.

FULL DISCLOSURE

Except as otherwise prohibited by law, upon request by the Charter SELPA or any of its members, a Charter SELPA member shall provide any requested information, documents, writings or information of any sort requested without delay.

CHAPTER IV
POLICIES / ADMINISTRATIVE REGULATIONS

The Sonoma County Charter SELPA has adopted Policies and Administrative Regulations as outlined on the list on page 30. The Policies set forth in full within this document are included to fulfill local plan document requirements.

Sonoma County Charter SELPA Policies

1.	Comprehensive Plan for Special Education	CEOP	AR
2.	Identification and Evaluation of Individuals for Special Education	CEOP	AR
3.	Individualized Education Program	CEOP	AR
4.	Procedural Safeguards and Complaints for Special Education	CEOP	AR
5.	Confidentiality of Student Records	CEOP	AR
6.	Part C – Transition	CEOP	
7.	Students with Disabilities Enrolled by their Parents in Private Schools	CEOP	
8.	Compliance Assurances	CEOP	
9.	Governance	CEOP	AR
10.	Personnel Qualifications	CEOP	AR
11.	Performance Goals and Indicators	CEOP	
12.	Participation in Assessments	CEOP	AR
13.	Supplementation of State and Federal Funds	CEOP	
14.	Maintenance of Effort	CEOP	AR
15.	Public Participation	CEOP	
16.	Suspension/Expulsion	CEOP	AR
17.	Access to Instructional Materials	CEOP	
18.	Overidentification and Disproportionality	CEOP	
19.	Prohibition of Mandatory Medicine	CEOP	
20.	Data	CEOP	
21.	Literacy	CEOP	
22.	Admission of LEAs to the Charter SELPA	CEOP	AR
23.	Behavioral Interventions for Special Education Students	CEOP	AR
24.	Nonpublic, Nonsectarian School and Agency Services for Spec. Ed.	CEOP	AR
25.	Conflict of Interest	CEOP	

V. ATTACHMENTS

- a. List of 5 New and 15 Original Members of the Sonoma County
Charter SELPA – 2015-16 Page 32

**Attachment A
Charter SELPA Local Plan**

Charter Schools for 2015/16

(Submitted to CDE on June 1, 2015)

The Sonoma County Charter SELPA found the following 20 charters met their criteria for admission for 2015-16 and have approved these charters to join the SELPA pending CDE approval. It is also understood that additional charters approved and referred by the State Board and approved by CDE to join the Charter SELPA are included within the Charter SELPA Local Plan.

<u>Charter School</u>	<u>CDS Number</u>	<u>Member</u>	<u>Page</u>
The Academy of Alameda	01-611190-122085	July 2012	33
Charter School of Morgan Hill	43-69583-6118541	July 2012	36
Cornerstone Academy Preparatory School	43-69450-0121483	July 2012	39
Oasis Charter Public School	27-65961-6119663	July 2012	42
Voices College-Bound Language Academy	43-69450-0113662	July 2012	45
Big Sur Charter School	27-75150-0118349	July 2013	48
Golden Oak Montessori School	01-61192-0119248	July 2013	51
Latino College Preparatory/NHU Foundation	43-69427-4330668	July 2013	54
Monterey Bay Charter	27-10272-0112177	July 2013	57
Oakland Unity High School	01-61259-0100065	July 2013	60
Silver Oak High School	01-61192-0127944	July 2013	63
B. Roberto Cruz Leadership Academy	Not Yet Issued	July 2014	66
Mare Island Technology Academy Middle School	48-70581-4830196	July 2014	69
Mare Island Technology Academy High School	48-70581-6116255	July 2014	72
Luis Valdez Leadership Academy	Not Yet Issued	July 2014	75
<u>New Charter Schools Effective July 1, 2015</u>			
The Academy of Alameda Elementary School	01-61119-0131805	July 2015	78
Bay View Academy	27-10272-0124297	July 2015	81
Oakland Unity Middle School	01-10017-0131581	July 2015	84
Voices College-Bound Language Academy at Morgan Hill	43-10439-0131748	July 2015	87
Voices College-Bound Language Academy at Mt. Pleasant	Not Yet Issued	July 2015	90

Charter SELPA School Information

Today's Date: March 19, 2012

Name of Charter School: **The Academy of Alameda**

CDS Code: 01-61119-0122085

Address: 401 Pacific Ave, Alameda, CA 94609

Phone: (510) 748-4017 Fax: (510) 523-5304

School Type: Traditional
 Independent Study
 Virtual/Distance

Grades Served: 6-8

CBEDS:

Special Education Contact: Nora Bullock

Special Ed. Contact's Phone: (510) 748-4017 x3100

Email: nbullock@alameda.k12.ca.us

Member of CMO? Yes No If yes, name of CMO: N/A

Name of CEO: Matt Huxley, Executive Director

Authorizing Agency: Alameda Unified School District

Date Authorized: December 15, 2009

Date Opened: September 1, 2010

Geographic SELPA: North Region SELPA

Reason for leaving Geographic SELPA: Have control over our Special Ed. Program

Joined Sonoma County Charter SELPA: July 1, 2012

CDE Charter Division Notified: March 30, 2012

CDE Special Education Division Notified: March 30, 2012

Charter School Local Plan Implementation

The Academy of Alameda will meet the Education Code Requirements for Special Education.

Education Code §56140 a-g

(a) The County Superintendent, knowing this is an out-of-geographic Charter School, still assumes the Local Plan requirements to monitor and coordinate special education for this school. The County Superintendent and the Sonoma County Charter SELPA ensure there is a coordinated system of services to students with disabilities.

Education Code §56150 through 56177 are the responsibility of the County where the parent resides, or in the case of Foster Youth where the student is placed. The Academy of Alameda is aware of the location of these agencies and a resource guide has been provided with specific contact information.

Education Code §56190

The Academy of Alameda LEA will have the opportunity to representation and participation with the Charter SELPA Community Advisory Committee. Meetings are scheduled for three times a year. Parents within the charter school enrollment region will have the opportunity to review and comment on Local Plan revisions. Parents will have the opportunity to attend trainings or participate via webcasting or teleconferencing.

Education Code §56195

The Academy of Alameda LEA will participate in the Charter School Allocation Plan. The Academy of Alameda will not be treated differently with regards to funding and resource allocation.

Education Code §56195.1

The Academy of Alameda LEA will adopt the Sonoma County Charter Local Plan and assurance adherence. The Academy of Alameda will implement and participate in the governance structure.

Through the application process the County Superintendent of Schools, the SELPA Director, and the CEO Admission Committee have reviewed and accepted this Charter LEA for membership. The committee agrees the school is either capable, or has an acceptable plan in place, to ensure services to students with disabilities.

The Academy of Alameda LEA will designate specific staff to attend Charter SELPA Special Education meetings.

Education Code §56195.7

The Academy of Alameda LEA adopts the Sonoma County Charter School Procedural Guide, Board Policies and Administrative Regulations for implementation. Technical assistance and supports will be provided by SELPA staff to ensure understanding and compliance.

The Academy of Alameda LEA has agreed to participate in professional development regarding SEIS (Special Education Information System) for the computerized IEP program and CASEMIS (California Special Education Management Information System) for submitting special education data required by the California Department of Education.

Education Code §52605

The charter school LEAs and their governing Boards have adopted the Local Plan and the twenty-nine federal assurances. The Charter SELPA staff agrees to support the Charter LEA in their implementation. Technical staff will be available.

Education Code §56205 (12) (a)

Refer to §52605

Education Code §56205 (13)

Annually when the Academy of Alameda LEA submits data to the SELPA for the Personnel Data report they will also submit staff and credential information. The SELPA staff will review data and confirm appropriate staff.

Education Code §56205 (G) (3)

Charter School LEAs in the state of California are not authorized to serve preschool students.

The Academy of Alameda LEA may need additional assistance in this area which will be provided by the SELPA.

Education Code §5206

The Academy of Alameda LEA will utilize the forms and procedures established to access the specialized equipment and services fund.

In the case where required services are unavailable or beyond the Charter LEA's capability, the Sonoma County Charter SELPA will contact the local geographic SELPA to see if services and/or placement can be obtained on a fee for services basis.

Education Code §56240 Staff Development

The Academy of Alameda LEA will be provided with professional development that is necessary for them to comply with all reporting requirements. In addition, based on the needs of their school, they may request additional trainings from SELPA staff.

Monthly the SELPA provides a Staff Development Bulletin with opportunities for participation and contact information.

The SELPA also assists the Charter LEA in assessing local and regional opportunities.

The Academy of Alameda LEA will have the opportunity to participate in professional development activities provided by the SELPA.

Charter SELPA School Information

Today's Date: March 19, 2012

Name of Charter School: **Charter School of Morgan Hill**

CDS Code: 43-69583-6118541

Address: 9530 Monterey Road, Morgan Hill, CA 95037

Phone: 408-463-0618 Fax: 408-463-0267

School Type: Traditional
 Independent Study
 Virtual/Distance Learning

Grades Served: K-8

CBEDS: 538

Special Education Contact: Tristine Jakubs

Special Ed. Contact's Phone: 408-463-0618

Email: tjakubs@csmh.org

Member of CMO? Yes No If yes, name of CMO: N/A

Name of CEO: Paige Cisewski

Authorizing Agency: Morgan Hill Unified School District

Date Authorized: September 28, 2010

Date Opened: August 1, 2001

Geographic SELPA: South East SELPA

Reason for leaving Geographic SELPA: To obtain better services for our students.

Joined Sonoma County Charter SELPA: July 1, 2012

CDE Charter Division Notified: March 30, 2012

CDE Special Education Division Notified: March 30, 2012

Charter School Local Plan Implementation

The Charter School of Morgan Hill will meet the Education Code Requirements for Special Education.

Education Code §56140 a-g

(b) The County Superintendent, knowing this is an out-of-geographic Charter School, still assumes the Local Plan requirements to monitor and coordinate special education for this school. The County Superintendent and the Sonoma County Charter SELPA ensure there is a coordinated system of services to students with disabilities.

Education Code §56150 through 56177 are the responsibility of the County where the parent resides, or in the case of Foster Youth where the student is placed. The charter school is aware of the location of these agencies and a resource guide has been provided with specific contact information.

Education Code §56190

The Charter School LEA will have the opportunity to representation and participation with the Charter SELPA Community Advisory Committee. Meetings are scheduled for three times a year. Parents within the charter school enrollment region will have the opportunity to review and comment on Local Plan revisions. Parents will have the opportunity to attend trainings or participate via webcasting or teleconferencing.

Education Code §56195

The Charter School LEA will participate in the Charter School Allocation Plan. The charter school will not be treated differently with regards to funding and resource allocation.

Education Code §56195.1

The Charter School LEA will adopt the Sonoma County Charter Local Plan and assurance adherence. The Charter School of Morgan Hill will implement and participate in the governance structure.

Through the application process the County Superintendent of Schools, the SELPA Director, and the CEO Admission Committee have reviewed and accepted this Charter LEA for membership. The committee agrees the school is either capable, or has an acceptable plan in place, to ensure services to students with disabilities.

The Charter School of Morgan Hill LEA will designate specific staff to attend Charter SELPA Special Education meetings.

Education Code §56195.7

The Charter School of Morgan Hill LEA adopts the Sonoma County Charter School Procedural Guide, Board Policies and Administrative Regulations for implementation. Technical assistance and supports will be provided by SELPA staff to ensure understanding and compliance.

The LEA Charter School of Morgan Hill has agreed to participate in professional development regarding SEIS (Special Education Information System) for the computerized IEP program and CASEMIS (California Special Education Management Information System) for submitting special education data required by the California Department of Education.

Education Code §52605

Charter School LEAs and their governing Boards have adopted the Local Plan and the twenty-nine federal assurances. The Charter SELPA staff agrees to support the Charter LEA in their implementation. Technical staff will be available.

Education Code §56205 (12) (a)

Refer to §52605

Education Code §56205 (13)

Annually when the Charter School LEA submits data to the SELPA for the Personnel Data report they will also submit staff and credential information. The SELPA staff will review data and confirm appropriate staff.

Education Code §56205 (G) (3)

Charter School LEAs in the state of California are not authorized to serve preschool students.

The Charter School LEA may need additional assistance in this area which will be provided by the SELPA.

Education Code §5206

The Charter School LEA will utilize the forms and procedures established to access the specialized equipment and services fund.

In the case where required services are unavailable or beyond the Charter LEA's capability, the Sonoma County Charter SELPA will contact the local geographic SELPA to see if services and/or placement can be obtained on a fee for services basis.

Education Code §56240 Staff Development

The Charter School LEA will be provided with professional development that is necessary for them to comply with all reporting requirements. In addition, based on the needs of their school, they may request additional trainings from SELPA staff.

Monthly the SELPA provides a Staff Development Bulletin with opportunities for participation and contact information.

The SELPA also assists the Charter LEA in assessing local and regional opportunities.

The Charter School of Morgan Hill LEA will have the opportunity to participate in professional development activities provided by the SELPA.

Today's Date: March 19, 2012
 Name of Charter School: **Cornerstone Academy Preparatory School**
 CDS Code: 43-69450-0121483
 Current Address: 1250 Taper Lane P-6 San Jose CA 95122
 2012-13 Address: 1602 Lucretia Ave San Jose CA 95122
 Phone: (408) 361-3829 Fax: (408) 361-3878
 School Type: Traditional
 Independent Study
 Virtual/Distance Learning
 Grades Served: Currently K-2, 12-13
 CBEDS: 211
 Special Education Contact: Shara Hegde
 Special Ed. Contact's Phone: 408-401-9388
 Email: shegde@cornerstoneacademysj.org
 Member of CMO? Yes No If yes, name of CMO: N/A
 Name of CEO: Shara Hegde
 Authorizing Agency: Franklin-McKinley School District
 Date Authorized: September 8, 2009
 Date Opened: August 18, 2010
 Geographic SELPA: South East Consortium
 Reason for leaving Geographic SELPA: Wanted to have more control over services and ensure compliance
 Joined Sonoma County Charter SELPA: July 1, 2012
 CDE Charter Division Notified: March 30, 2012
 CDE Special Education Division Notified: March 30, 2012

Charter School Local Plan Implementation

Cornerstone Academy Preparatory School will meet the Education Code Requirements for Special Education.

Education Code §56140 a-g

(c) The County Superintendent, knowing this is an out-of-geographic Charter School, still assumes the Local Plan requirements to monitor and coordinate special education for this school. The County Superintendent and the Sonoma County Charter SELPA ensure there is a coordinated system of services to students with disabilities.

Education Code §56150 through 56177 are the responsibility of the County where the parent resides, or in the case of Foster Youth where the student is placed. The charter school is aware of the location of these agencies and a resource guide has been provided with specific contact information.

Education Code §56190

The Charter School LEA will have the opportunity to representation and participation with the Charter SELPA Community Advisory Committee. Meetings are scheduled for three times a year. Parents within the charter school enrollment region will have the opportunity to review and comment on Local Plan revisions. Parents will have the opportunity to attend trainings or participate via webcasting or teleconferencing.

Education Code §56195

The Charter School LEA will participate in the Charter School Allocation Plan. The charter school will not be treated differently with regards to funding and resource allocation.

Education Code §56195.1

The Charter School LEA will adopt the Sonoma County Charter Local Plan and assurance adherence. Cornerstone Academy Preparatory School will implement and participate in the governance structure.

Through the application process the County Superintendent of Schools, the SELPA Director, and the CEO Admission Committee have reviewed and accepted this Charter LEA for membership. The committee agrees the school is either capable, or has an acceptable plan in place, to ensure services to students with disabilities.

The Cornerstone Academy Preparatory School LEA will designate specific staff to attend Charter SELPA Special Education meetings.

Education Code §56195.7

The Cornerstone Academy Preparatory School LEA adopts the Sonoma County Charter School Procedural Guide, Board Policies and Administrative Regulations for implementation. Technical assistance and supports will be provided by SELPA staff to ensure understanding and compliance.

The Cornerstone Academy Preparatory School LEA has agreed to participate in professional development regarding SEIS (Special Education Information System) for the computerized IEP program and CASEMIS (California Special Education Management Information System) for submitting special education data required by the California Department of Education.

Education Code §52605

Charter School LEAs and their governing Boards have adopted the Local Plan and the twenty-nine federal assurances. The Charter SELPA staff agrees to support the Charter LEA in their implementation. Technical staff will be available.

Education Code §56205 (12) (a)

Refer to §52605

Education Code §56205 (13)

Annually when the Charter School LEA submits data to the SELPA for the Personnel Data report they will also submit staff and credential information. The SELPA staff will review data and confirm appropriate staff.

Education Code §56205 (G) (3)

Charter School LEAs in the state of California are not authorized to serve preschool students.

The Charter School LEA may need additional assistance in this area which will be provided by the SELPA.

Education Code §5206

The Charter School LEA will utilize the forms and procedures established to access the specialized equipment and services fund.

In the case where required services are unavailable or beyond the Charter LEA's capability, the Sonoma County Charter SELPA will contact the local geographic SELPA to see if services and/or placement can be obtained on a fee for services basis.

Education Code §56240 Staff Development

The Charter School LEA will be provided with professional development that is necessary for them to comply with all reporting requirements. In addition, based on the needs of their school, they may request additional trainings from SELPA staff.

Monthly the SELPA provides a Staff Development Bulletin with opportunities for participation and contact information.

The SELPA also assists the Charter LEA in assessing local and regional opportunities.

The Cornerstone Academy Preparatory School LEA will have the opportunity to participate in professional development activities provided by the SELPA.

Charter SELPA School Information

Today's Date: March 20, 2012

Name of Charter School: **Oasis Charter Public School**

CDS Code: 27-65961-6119663

Address: 1135 Westridge Parkway, Salinas, CA 93907

Phone: (831) 424-9003 Fax: (831) 424-9005

School Type: Traditional
 Independent Study
 Virtual/Distance Learning

Grades Served: Kindergarten through 8th grade

CBEDS: 250

Special Education Contact: Jennifer Armenta

Special Ed. Contact's Phone: (831) 424-9003 x23 or (831) 801-5019

Email: jenniferarmenta@oasischarterschool.org

Member of CMO? Yes No If yes, name of CMO: N/A

Name of CEO: Dr. Juanita Perea

Authorizing Agency: Alisal Union School District

Date Authorized: May 25, 2011

Date Opened: August 1, 2002

Geographic SELPA: Monterey County Office of Education

Reason for leaving
Geographic SELPA: Our MOU with the authorizing agency states that Oasis must make an effort to join another SELPA for 2012-2013.

Joined Sonoma County Charter SELPA: July 1, 2012

CDE Charter Division Notified: March 30, 2012

CDE Special Education Division Notified: March 30, 2012

Charter School Local Plan Implementation

The Oasis Charter Public School will meet the Education Code Requirements for Special Education.

Education Code §56140 a-g

(d) The County Superintendent, knowing this is an out-of-geographic Charter School, still assumes the Local Plan requirements to monitor and coordinate special education for this school. The County Superintendent and the Sonoma County Charter SELPA ensure there is a coordinated system of services to students with disabilities.

Education Code §56150 through 56177 are the responsibility of the County where the parent resides, or in the case of Foster Youth where the student is placed. The charter school is aware of the location of these agencies and a resource guide has been provided with specific contact information.

Education Code §56190

The Charter School LEA will have the opportunity to representation and participation with the Charter SELPA Community Advisory Committee. Meetings are scheduled for three times a year. Parents within the charter school enrollment region will have the opportunity to review and comment on Local Plan revisions. Parents will have the opportunity to attend trainings or participate via webcasting or teleconferencing.

Education Code §56195

The Charter School LEA will participate in the Charter School Allocation Plan. The charter school will not be treated differently with regards to funding and resource allocation.

Education Code §56195.1

The Charter School LEA will adopt the Sonoma County Charter Local Plan and assurance adherence. The Oasis Charter Public School will implement and participate in the governance structure.

Through the application process the County Superintendent of Schools, the SELPA Director, and the CEO Admission Committee have reviewed and accepted this Charter LEA for membership. The committee agrees the school is either capable, or has an acceptable plan in place, to ensure services to students with disabilities.

The Oasis Charter Public School LEA will designate specific staff to attend Charter SELPA Special Education meetings.

Education Code §56195.7

The Oasis Charter Public School LEA adopts the Sonoma County Charter School Procedural Guide, Board Policies and Administrative Regulations for implementation. Technical assistance and supports will be provided by SELPA staff to ensure understanding and compliance.

The Oasis Charter Public School LEA has agreed to participate in professional development regarding SEIS (Special Education Information System) for the computerized IEP program and CASEMIS (California Special Education Management Information System) for submitting special education data required by the California Department of Education.

Education Code §52605

Charter School LEAs and their governing Boards have adopted the Local Plan and the twenty-nine federal assurances. The Charter SELPA staff agrees to support the Charter LEA in their implementation. Technical staff will be available.

Education Code §56205 (12) (a)

Refer to §52605

Education Code §56205 (13)

Annually when the Charter School LEA submits data to the SELPA for the Personnel Data report they will also submit staff and credential information. The SELPA staff will review data and confirm appropriate staff.

Education Code §56205 (G) (3)

Charter School LEAs in the state of California are not authorized to serve preschool students.

The Charter School LEA may need additional assistance in this area which will be provided by the SELPA.

Education Code §5206

The Charter School LEA will utilize the forms and procedures established to access the specialized equipment and services fund.

In the case where required services are unavailable or beyond the Charter LEA's capability, the Sonoma County Charter SELPA will contact the local geographic SELPA to see if services and/or placement can be obtained on a fee for services basis.

Education Code §56240 Staff Development

The Charter School LEA will be provided with professional development that is necessary for them to comply with all reporting requirements. In addition, based on the needs of their school, they may request additional trainings from SELPA staff.

Monthly the SELPA provides a Staff Development Bulletin with opportunities for participation and contact information.

The SELPA also assists the Charter LEA in assessing local and regional opportunities.

The Oasis Charter Public School LEA will have the opportunity to participate in professional development activities provided by the SELPA.

Charter SELPA School Information

Today's Date: March 22, 2012

Name of Charter School: **Voices College-Bound Language Academy**

CDS Code: 43-69450-0113662

Address: 4075 Sacramento Ave. San Jose, CA 95111

Phone: 408-361-1960 Fax: 408-361-1979

School Type: Traditional
 Independent Study
 Virtual/Distance Learning

Grades Served: K-6

CBEDS: 316

Special Education Contact: Frances Teso

Special Ed. Contact's Phone: 408-361-1961

Email: fteso@voicescharterschool.com

Member of CMO? Yes No If yes, name of CMO: N/A

Name of CEO:

Authorizing Agency: Franklin-McKinley School District

Date Authorized: March 14, 2006

Date Opened: September 4, 2007

Geographic SELPA: South East Consortium (SECSE)

Reason for leaving Geographic SELPA: Unsatisfied with quality of service

Joined Sonoma County Charter SELPA: July 1, 2012

CDE Charter Division Notified: March 30, 2012

CDE Special Education Division Notified: March 30, 2012

Charter School Local Plan Implementation

The Voices College-Bound Language Academy will meet the Education Code Requirements for Special Education.

Education Code §56140 a-g

(e) The County Superintendent, knowing this is an out-of-geographic Charter School, still assumes the Local Plan requirements to monitor and coordinate special education for this school. The County Superintendent and the Sonoma County Charter SELPA ensure there is a coordinated system of services to students with disabilities.

Education Code §56150 through 56177 are the responsibility of the County where the parent resides, or in the case of Foster Youth where the student is placed. The charter school is aware of the location of these agencies and a resource guide has been provided with specific contact information.

Education Code §56190

The Charter School LEA will have the opportunity to representation and participation with the Charter SELPA Community Advisory Committee. Meetings are scheduled for three times a year. Parents within the charter school enrollment region will have the opportunity to review and comment on Local Plan revisions. Parents will have the opportunity to attend trainings or participate via webcasting or teleconferencing.

Education Code §56195

The Charter School LEA will participate in the Charter School Allocation Plan. The charter school will not be treated differently with regards to funding and resource allocation.

Education Code §56195.1

The Charter School LEA will adopt the Sonoma County Charter Local Plan and assurance adherence. The Voices College-Bound Language Academy will implement and participate in the governance structure.

Through the application process the County Superintendent of Schools, the SELPA Director, and the CEO Admission Committee have reviewed and accepted this Charter LEA for membership. The committee agrees the school is either capable, or has an acceptable plan in place, to ensure services to students with disabilities.

The Voices College-Bound Language Academy LEA will designate specific staff to attend Charter SELPA Special Education meetings.

Education Code §56195.7

The Voices College-Bound Language Academy LEA adopts the Sonoma County Charter School Procedural Guide, Board Policies and Administrative Regulations for implementation. Technical assistance and supports will be provided by SELPA staff to ensure understanding and compliance.

The Voices College-Bound Language Academy LEA has agreed to participate in professional development regarding SEIS (Special Education Information System) for the computerized IEP program and CASEMIS (California Special Education Management Information System) for submitting special education data required by the California Department of Education.

Education Code §52605

Charter School LEAs and their governing Boards have adopted the Local Plan and the twenty-nine federal assurances. The Charter SELPA staff agrees to support the Charter LEA in their implementation. Technical staff will be available.

Education Code §56205 (12) (a)

Refer to §52605

Education Code §56205 (13)

Annually when the Charter School LEA submits data to the SELPA for the Personnel Data report they will also submit staff and credential information. The SELPA staff will review data and confirm appropriate staff.

Education Code §56205 (G) (3)

Charter School LEAs in the state of California are not authorized to serve preschool students.

The Charter School LEA may need additional assistance in this area which will be provided by the SELPA.

Education Code §5206

The Charter School LEA will utilize the forms and procedures established to access the specialized equipment and services fund.

In the case where required services are unavailable or beyond the Charter LEA's capability, the Sonoma County Charter SELPA will contact the local geographic SELPA to see if services and/or placement can be obtained on a fee for services basis.

Education Code §56240 Staff Development

The Charter School LEA will be provided with professional development that is necessary for them to comply with all reporting requirements. In addition, based on the needs of their school, they may request additional trainings from SELPA staff.

Monthly the SELPA provides a Staff Development Bulletin with opportunities for participation and contact information.

The SELPA also assists the Charter LEA in assessing local and regional opportunities.

The Voices College-Bound Language Academy LEA will have the opportunity to participate in professional development activities provided by the SELPA.

Charter SELPA School Information

Today's Date: April 4, 2013

Name of Charter School: **Big Sur Charter School**

CDS Code: 27-75150-0118349

Address: PO Box 138 Big Sur, CA 93920

Phone: 831-667-0203

Fax: 831-667-2237

School Type: _____ Traditional
 Independent Study
 _____ Virtual/Distance

Grades Served: K-12

C Beds:

Special Education Contact: Shawna Garritson
Special Education Contact's Phone: (831) 667-0203 cell or (831) 241-0288

Special Education Contact's Email: bigsurcharter@gmail.com

Member of CMO? ___ Yes No If yes, name of CMO: N/A

Name of CEO:

Authorizing District/Agency: Big Sur Unified

Date Authorized: May 8, 2008

Date Opened: July 1, 2008

Geographic SELPA: Monterey County
Reason for leaving
Geographic SELPA: Our small and necessary district is too geographically distant to serve our students to the level that we require.

Date Charter Joined Sonoma SELPA: July 1, 2013

Date CDE Charter Division Notified: June 1, 2012

Charter School Local Plan Implementation

The Big Sur Charter School will meet the Education Code Requirements for Special Education.

Education Code §56140 a-g

The County Superintendent, knowing this is an out-of-geographic Charter School, still assumes the Local Plan requirements to monitor and coordinate special education for this school. The County Superintendent and the Sonoma County Charter SELPA ensure there is a coordinated system of services to students with disabilities.

Education Code §56150 through 56177 are the responsibility of the County where the parent resides, or in the case of Foster Youth where the student is placed. The Big Sur Charter School LEA is aware of the location of these agencies and a resource guide has been provided with specific contact information.

Education Code §56190

The Big Sur Charter School LEA will have the opportunity to representation and participation with the Charter SELPA Community Advisory Committee. Meetings are scheduled for three times a year. Parents within the charter school enrollment region will have the opportunity to review and comment on Local Plan revisions. Parents will have the opportunity to attend trainings or participate via webcasting or teleconferencing.

Education Code §56195

The Big Sur Charter School LEA will participate in the Charter School Allocation Plan. The Big Sur Charter School LEA will not be treated differently with regards to funding and resource allocation.

Education Code §56195.1

The Big Sur Charter School LEA will adopt the Sonoma County Charter Local Plan and assurance adherence. The Sur Charter School LEA will implement and participate in the governance structure.

Through the application process the County Superintendent of Schools, the SELPA Director, and the CEO Admission Committee have reviewed and accepted this Charter LEA for membership. The committee agrees the school is either capable, or has an acceptable plan in place, to ensure services to students with disabilities.

The Big Sur Charter School LEA will designate specific staff to attend Charter SELPA Special Education meetings.

Education Code §56195.7

The Big Sur Charter School LEA adopts the Sonoma County Charter School Procedural Guide, Policies and Administrative Regulations for implementation. To ensure understanding and compliance, technical assistance and supports will be provided by SELPA staff.

The Big Sur Charter School LEA has agreed to participate in professional development regarding SEIS (Special Education Information System) for the computerized IEP program and CASEMIS (California Special Education Management Information System) for submitting

special education data required by the California Department of Education.

Education Code §52605

The charter school LEAs and their governing Boards have adopted the Local Plan and the twenty-nine federal assurances. The Charter SELPA staff agrees to support the Charter LEA in their implementation. Technical staff will be available.

Education Code §56205 (12) (a)

Refer to §52605.

Education Code §56205 (13)

Annually when the Big Sur Charter School LEA submits data to the SELPA for the Personnel Data report they will also submit staff and credential information. The SELPA staff will review data and confirm appropriate staff.

Education Code §56205 (G) (3)

Charter School LEAs in the state of California are not authorized to serve preschool students.

The Big Sur Charter School LEA may need additional assistance in this area which will be provided by the SELPA.

Education Code §5206

The Big Sur Charter School LEA will utilize the forms and procedures established to access the specialized equipment and services fund.

In the case where required services are unavailable or beyond the Charter LEA's capability, the Sonoma County Charter SELPA will contact the local geographic SELPA to see if services and/or placement can be obtained on a fee for services basis.

Education Code §56240 (Staff Development)

The Big Sur Charter School LEA will be provided with professional development that is necessary for them to comply with all reporting requirements. In addition, based on the needs of their school, they may request additional trainings from SELPA staff.

Monthly the SELPA provides a Staff Development Bulletin with opportunities for participation and contact information.

The SELPA also assists the Charter LEA in assessing local and regional opportunities.

The Big Sur Charter School LEA will have the opportunity to participate in professional development activities provided by the SELPA.

Charter SELPA School Information

Today's Date: April 4, 2013

Name of Charter School: **Golden Oak Montessori Charter School**

CDS Code: 01-61192-0119248

Address: 951 Palisade Street, Hayward, CA 94542

Phone: (510) 931-7868

Fax: (510) 247-0603

School Type: _____ Traditional
_____ Independent Study
_____ Virtual/Distance
 x Montessori

Grades Served: 1-8

C Beds:

Special Education Contact: Brian Edwards

Special Education Contact's Phone: (510) 931-7868

Special Education Contact's Email: brian@goldenoakmontessori.org

Member of CMO? ___ Yes x No If yes, name of CMO: N/A

Name of CEO: Deirdre Fennessy

Authorizing District/Agency: Hayward Unified School District

Date Authorized: December 1, 2008

Date Opened: August 1, 2009

Geographic SELPA: Alameda

Reason for leaving
Geographic SELPA: To be our own LEA
Date Charter LEA Joined Sonoma: July 1, 2013

Date CDE Charter Division Notified: October 17, 2012

Charter School Local Plan Implementation

The Golden Oak Montessori Charter School of Hayward LEA will meet the Education Code Requirements for Special Education.

Education Code §56140 a-g

The County Superintendent, knowing this is an out-of-geographic Charter School, still assumes the Local Plan requirements to monitor and coordinate special education for this school. The County Superintendent and the Sonoma County Charter SELPA ensure there is a coordinated system of services to students with disabilities.

Education Code §56150 through 56177 are the responsibility of the County where the parent resides, or in the case of Foster Youth where the student is placed. The Golden Oak Montessori Charter School of Hayward LEA is aware of the location of these agencies and a resource guide has been provided with specific contact information.

Education Code §56190

The Golden Oak Montessori Charter School of Hayward LEA will have the opportunity to representation and participation with the Charter SELPA Community Advisory Committee. Meetings are scheduled for three times a year. Parents within the charter school enrollment region will have the opportunity to review and comment on Local Plan revisions. Parents will have the opportunity to attend trainings or participate via webcasting or teleconferencing.

Education Code §56195

The Golden Oak Montessori Charter School of Hayward LEA will participate in the Charter School Allocation Plan. The Golden Oak Montessori Charter School of Hayward LEA will not be treated differently with regards to funding and resource allocation.

Education Code §56195.1

The Golden Oak Montessori Charter School of Hayward LEA will adopt the Sonoma County Charter Local Plan and assurance adherence. The Golden Oak Montessori Charter School of Hayward LEA will implement and participate in the governance structure.

Through the application process the County Superintendent of Schools, the SELPA Director, and the CEO Admission Committee have reviewed and accepted this Charter LEA for membership. The committee agrees the school is either capable, or has an acceptable plan in place, to ensure services to students with disabilities.

The Golden Oak Montessori Charter School of Hayward LEA will designate specific staff to attend Charter SELPA Special Education meetings.

Education Code §56195.7

The Golden Oak Montessori Charter School of Hayward LEA adopts the Sonoma County Charter School Procedural Guide, Policies and Administrative Regulations for implementation. To ensure understanding and compliance, technical assistance and supports will be provided by SELPA staff.

The Golden Oak Montessori Charter School of Hayward LEA has agreed to participate in

professional development regarding SEIS (Special Education Information System) for the computerized IEP program and CASEMIS (California Special Education Management Information System) for submitting special education data required by the California Department of Education.

Education Code §52605

The charter school LEAs and their governing Boards have adopted the Local Plan and the twenty-nine federal assurances. The Charter SELPA staff agrees to support the Charter LEA in their implementation. Technical staff will be available.

Education Code §56205 (12) (a)

Refer to §52605.

Education Code §56205 (13)

Annually when the Golden Oak Montessori Charter School of Hayward LEA submits data to the SELPA for the Personnel Data report they will also submit staff and credential information. The SELPA staff will review data and confirm appropriate staff.

Education Code §56205 (G) (3)

Charter School LEAs in the state of California are not authorized to serve preschool students.

The Golden Oak Montessori Charter School of Hayward LEA may need additional assistance in this area which will be provided by the SELPA.

Education Code §5206

The Golden Oak Montessori Charter School of Hayward LEA will utilize the forms and procedures established to access the specialized equipment and services fund.

In the case where required services are unavailable or beyond the Charter LEA's capability, the Sonoma County Charter SELPA will contact the local geographic SELPA to see if services and/or placement can be obtained on a fee for services basis.

Education Code §56240 (Staff Development)

The Golden Oak Montessori Charter School of Hayward LEA will be provided with professional development that is necessary for them to comply with all reporting requirements. In addition, based on the needs of their school, they may request additional trainings from SELPA staff.

Monthly the SELPA provides a Staff Development Bulletin with opportunities for participation and contact information.

The SELPA also assists the Charter LEA in assessing local and regional opportunities.

The Golden Oak Montessori Charter School of Hayward LEA will have the opportunity to participate in professional development activities provided by the SELPA.

Charter SELPA School Information

Today's Date: April 4, 2013

Name of Charter School: **Latino College Preparatory**

CDS Code: 43-69427-4330668

Address: 1966 Flint Avenue, San Jose 95148

Phone: (408) 729-2281

Fax: (408) 532-1462

School Type: Traditional
 Independent Study
 Virtual/Distance

Grades Served: 9-12

C Beds:

Special Education Contact: Raul Lomeli

Special Education Contact's Phone: 408-792-2281

Special Education Contact's Email: rlomeli@nhufoundation

Member of CMO? Yes No If yes, name of CMO: N/A

Name of CEO: Edward Alvarez

Authorizing Agency: East Side Union High School District

Date Authorized: August 28, 2001

Date Opened: Fall 2001

Geographic SELPA: Southeast SELPA

Reason for leaving Geographic SELPA: Provide better services to students

Charter LEA Joined Sonoma County July 1, 2013

Charter Division Notified: June 19, 2012

CDE Special Education Div. Notified: June 19, 2012

Charter School Local Plan Implementation

The Latino College Preparatory Academy will meet the Education Code Requirements for Special Education.

Education Code §56140 a-g

The County Superintendent, knowing this is an out-of-geographic Charter School, still assumes the Local Plan requirements to monitor and coordinate special education for this school. The County Superintendent and the Sonoma County Charter SELPA ensure there is a coordinated system of services to students with disabilities.

Education Code §56150 through 56177 are the responsibility of the County where the parent resides, or in the case of Foster Youth where the student is placed. The Latino College Preparatory Academy LEA is aware of the location of these agencies and a resource guide has been provided with specific contact information.

Education Code §56190

The Latino College Preparatory Academy LEA will have the opportunity to representation and participation with the Charter SELPA Community Advisory Committee. Meetings are scheduled for three times a year. Parents within the charter school enrollment region will have the opportunity to review and comment on Local Plan revisions. Parents will have the opportunity to attend trainings or participate via webcasting or teleconferencing.

Education Code §56195

The Latino College Preparatory Academy LEA will participate in the Charter School Allocation Plan. The Latino College Preparatory Academy LEA will not be treated differently with regards to funding and resource allocation.

Education Code §56195.1

The Latino College Preparatory Academy LEA will adopt the Sonoma County Charter Local Plan and assurance adherence. The Latino College Preparatory Academy LEA will implement and participate in the governance structure.

Through the application process the County Superintendent of Schools, the SELPA Director, and the CEO Admission Committee have reviewed and accepted this Charter LEA for membership. The committee agrees the school is either capable, or has an acceptable plan in place, to ensure services to students with disabilities.

The Latino College Preparatory Academy LEA will designate specific staff to attend Charter SELPA Special Education meetings.

Education Code §56195.7

The Latino College Preparatory Academy LEA adopts the Sonoma County Charter School Procedural Guide, Policies and Administrative Regulations for implementation. To ensure understanding and compliance, technical assistance and supports will be provided by SELPA staff.

The Latino College Preparatory Academy LEA has agreed to participate in professional

development regarding SEIS (Special Education Information System) for the computerized IEP program and CASEMIS (California Special Education Management Information System) for submitting special education data required by the California Department of Education.

Education Code §52605

The charter school LEAs and their governing Boards have adopted the Local Plan and the twenty-nine federal assurances. The Charter SELPA staff agrees to support the Charter LEA in their implementation. Technical staff will be available.

Education Code §56205 (12) (a)

Refer to §52605.

Education Code §56205 (13)

Annually when the Latino College Preparatory Academy LEA submits data to the SELPA for the Personnel Data report they will also submit staff and credential information. The SELPA staff will review data and confirm appropriate staff.

Education Code §56205 (G) (3)

Charter School LEAs in the state of California are not authorized to serve preschool students.

The Latino College Preparatory Academy LEA may need additional assistance in this area which will be provided by the SELPA.

Education Code §5206

The Latino College Preparatory Academy LEA will utilize the forms and procedures established to access the specialized equipment and services fund.

In the case where required services are unavailable or beyond the Charter LEA's capability, the Sonoma County Charter SELPA will contact the local geographic SELPA to see if services and/or placement can be obtained on a fee for services basis.

Education Code §56240 (Staff Development)

The Latino College Preparatory Academy LEA will be provided with professional development that is necessary for them to comply with all reporting requirements. In addition, based on the needs of their school, they may request additional trainings from SELPA staff.

Monthly the SELPA provides a Staff Development Bulletin with opportunities for participation and contact information.

The SELPA also assists the Charter LEA in assessing local and regional opportunities.

The Latino College Preparatory Academy LEA will have the opportunity to participate in professional development activities provided by the SELPA.

Charter SELPA School Information

Today's Date: April 4, 2013

Name of Charter School: **Monterey Bay Charter School**
CDS Code: 27-10272-0112177

Address: 1004 David Avenue, Pacific Grove, CA 93950

Phone: (831) 655-4638

Fax: (831) 655-4815

School Type: Traditional
 Independent Study
 Virtual/Distance

Grades Served: K-8

CBeds: 246

Special Education Contact: Paul Delbick, Special Education Coordinator
Special Education Contact's Phone: (831) 655-4638 x103

Special Education Contact Email: p.delbick@mbcharterschool.org
Member of CMO? Yes No If yes, name of CMO: N/A

Name of CEO: Cassandra Bridge

Authorizing District/Agency: Monterey County Office of Education

Date Authorized: April 5, 2006

Date Opened: August 23, 2006

Geographic SELPA: Monterey County

Reason for leaving
Geographic SELPA: Lack of support services for student population

Date Charter Joined Sonoma SELPA: July 1, 2013

Date CDE Charter Division Notified: April 3, 2013

Date CDE Sp. Ed. Notified: April 3, 2013

Charter School Local Plan Implementation

The Monterey Bay Charter School will meet the Education Code Requirements for Special Education.

Education Code §56140 a-g

The County Superintendent, knowing this is an out-of-geographic Charter School, still assumes the Local Plan requirements to monitor and coordinate special education for this school. The County Superintendent and the Sonoma County Charter SELPA ensure there is a coordinated system of services to students with disabilities.

Education Code §56150 through 56177 are the responsibility of the County where the parent resides, or in the case of Foster Youth where the student is placed. The Monterey Bay Charter School LEA is aware of the location of these agencies and a resource guide has been provided with specific contact information.

Education Code §56190

The Monterey Bay Charter School LEA will have the opportunity to representation and participation with the Charter SELPA Community Advisory Committee. Meetings are scheduled for three times a year. Parents within the charter school enrollment region will have the opportunity to review and comment on Local Plan revisions. Parents will have the opportunity to attend trainings or participate via webcasting or teleconferencing.

Education Code §56195

The Monterey Bay Charter School LEA will participate in the Charter School Allocation Plan. The Monterey Bay Charter School LEA will not be treated differently with regards to funding and resource allocation.

Education Code §56195.1

The Monterey Bay Charter School LEA will adopt the Sonoma County Charter Local Plan and assurance adherence. The Monterey Bay Charter School LEA will implement and participate in the governance structure.

Through the application process the County Superintendent of Schools, the SELPA Director, and the CEO Admission Committee have reviewed and accepted this Charter LEA for membership. The committee agrees the school is either capable, or has an acceptable plan in place, to ensure services to students with disabilities.

The Monterey Bay Charter School LEA will designate specific staff to attend Charter SELPA Special Education meetings.

Education Code §56195.7

The Monterey Bay Charter School LEA adopts the Sonoma County Charter School Procedural Guide, Policies and Administrative Regulations for implementation. To ensure understanding and compliance, technical assistance and supports will be provided by SELPA staff.

The Monterey Bay Charter School LEA has agreed to participate in professional development regarding SEIS (Special Education Information System) for the computerized IEP program and CASEMIS (California Special Education Management Information System) for submitting

special education data required by the California Department of Education.

Education Code §52605

The charter school LEAs and their governing Boards have adopted the Local Plan and the twenty-nine federal assurances. The Charter SELPA staff agrees to support the Charter LEA in their implementation. Technical staff will be available.

Education Code §56205 (12) (a)

Refer to §52605.

Education Code §56205 (13)

Annually when the Monterey Bay Charter School LEA submits data to the SELPA for the Personnel Data report they will also submit staff and credential information. The SELPA staff will review data and confirm appropriate staff.

Education Code §56205 (G) (3)

Charter School LEAs in the state of California are not authorized to serve preschool students.

The Monterey Bay Charter School LEA may need additional assistance in this area which will be provided by the SELPA.

Education Code §5206

The Monterey Bay Charter School LEA will utilize the forms and procedures established to access the specialized equipment and services fund.

In the case where required services are unavailable or beyond the Charter LEA's capability, the Sonoma County Charter SELPA will contact the local geographic SELPA to see if services and/or placement can be obtained on a fee for services basis.

Education Code §56240 (Staff Development)

The Monterey Bay Charter School LEA will be provided with professional development that is necessary for them to comply with all reporting requirements. In addition, based on the needs of their school, they may request additional trainings from SELPA staff.

Monthly the SELPA provides a Staff Development Bulletin with opportunities for participation and contact information.

The SELPA also assists the Charter LEA in assessing local and regional opportunities.

The Monterey Bay Charter School LEA will have the opportunity to participate in professional development activities provided by the SELPA.

Charter SELPA School Information

Today's Date: April 4, 2013

Name of Charter School: **Oakland Unity High School**

CDS Code: 01-61259-0100065

Address: 6038 Brann Street, Oakland, CA 94605

Phone: (510) 635-7170

Fax: (510) 635-3830

School Type: Traditional
 Independent Study
 Virtual/Distance

Grades Served: 9-12

C Beds:

Special Education Contact: Samuel M. Brewer

Special Education Contact's Phone: (510) 635-7170

Special Education Contact's Email: sbrewer@unityhigh.org

Member of CMO? Yes No If yes, name of CMO: N/A

Name of CEO: Sau-Lim (Lance) Tsang

Authorizing District/Agency: Oakland Unified

Date Authorized: October 9, 2002

Date Opened: August 1, 2003

Geographic SELPA: Oakland Unified School District SELPA

Reason for leaving
Geographic SELPA: Better (full time) services for our students;
utilize our own staffing

Date Joined Sonoma County SELPA: July 1, 2013

Date CDE Charter Division Notified: May 30, 2012

Date CDE Notified: May 30, 2012

Charter School Local Plan Implementation

The Oakland Unity High School LEA will meet the Education Code Requirements for Special Education.

Education Code §56140 a-g

The County Superintendent, knowing this is an out-of-geographic Charter School, still assumes the Local Plan requirements to monitor and coordinate special education for this school. The County Superintendent and the Sonoma County Charter SELPA ensure there is a coordinated system of services to students with disabilities.

Education Code §56150 through 56177 are the responsibility of the County where the parent resides, or in the case of Foster Youth where the student is placed. The Oakland Unity High School LEA is aware of the location of these agencies and a resource guide has been provided with specific contact information.

Education Code §56190

The Oakland Unity High School LEA will have the opportunity to representation and participation with the Charter SELPA Community Advisory Committee. Meetings are scheduled for three times a year. Parents within the charter school enrollment region will have the opportunity to review and comment on Local Plan revisions. Parents will have the opportunity to attend trainings or participate via webcasting or teleconferencing.

Education Code §56195

The Oakland Unity High School LEA will participate in the Charter School Allocation Plan. The Oakland Unity High School LEA will not be treated differently with regards to funding and resource allocation.

Education Code §56195.1

The Oakland Unity High School LEA will adopt the Sonoma County Charter Local Plan and assurance adherence. The Oakland Unity High School LEA will implement and participate in the governance structure.

Through the application process the County Superintendent of Schools, the SELPA Director, and the CEO Admission Committee have reviewed and accepted this Charter LEA for membership. The committee agrees the school is either capable, or has an acceptable plan in place, to ensure services to students with disabilities.

The Oakland Unity High School LEA will designate specific staff to attend Charter SELPA Special Education meetings.

Education Code §56195.7

The Oakland Unity High School LEA adopts the Sonoma County Charter School Procedural Guide, Policies and Administrative Regulations for implementation. To ensure understanding and compliance, technical assistance and supports will be provided by SELPA staff.

The Oakland Unity High School LEA has agreed to participate in professional development regarding SEIS (Special Education Information System) for the computerized IEP program and CASEMIS (California Special Education Management Information System) for submitting special education data required by the California Department of Education.

Education Code §52605

The charter school LEAs and their governing Boards have adopted the Local Plan and the twenty-nine federal assurances. The Charter SELPA staff agrees to support the Charter LEA in their implementation. Technical staff will be available.

Education Code §56205 (12) (a)

Refer to §52605.

Education Code §56205 (13)

Annually when the Oakland Unity High School LEA submits data to the SELPA for the Personnel Data report they will also submit staff and credential information. The SELPA staff will review data and confirm appropriate staff.

Education Code §56205 (G) (3)

Charter School LEAs in the state of California are not authorized to serve preschool students.

The Oakland Unity High School LEA may need additional assistance in this area which will be provided by the SELPA.

Education Code §5206

The Oakland Unity High School LEA will utilize the forms and procedures established to access the specialized equipment and services fund.

In the case where required services are unavailable or beyond the Charter LEA's capability, the Sonoma County Charter SELPA will contact the local geographic SELPA to see if services and/or placement can be obtained on a fee for services basis.

Education Code §56240 (Staff Development)

The Oakland Unity High School LEA will be provided with professional development that is necessary for them to comply with all reporting requirements. In addition, based on the needs of their school, they may request additional trainings from SELPA staff.

Monthly the SELPA provides a Staff Development Bulletin with opportunities for participation and contact information.

The SELPA also assists the Charter LEA in assessing local and regional opportunities.

The Oakland Unity High School LEA will have the opportunity to participate in professional development activities provided by the SELPA.

Charter SELPA School Information

Today's Date: April 4, 2013

Name of Charter School: **Silver Oak High School Charter**

CDS Code: 01-61192-0127944

Address: 951 Palisades Street, Hayward, CA 94542

Phone: (510) 582-9093

Fax: (510) 247-0603

School Type: Traditional
 Independent Study
 Virtual/Distance

Grades Served: 9-12

CBeds: N/A (Start-up)

Special Education Contact: Brian Edwards

Special Education Contact's Phone: (510) 931-7868

Special Education Contact's Email: brian@goldenoakmontessori.org

Member of CMO? Yes No If yes, name of CMO: N/A

Name of CEO: Murielle Bichard

Authorizing District/Agency: Alameda

Date Authorized: Pending

Date Opened: August 1, 2013

Geographic SELPA: Alameda

Reason for leaving
Geographic SELPA: To become our own LEA

Date Charter Joined Sonoma SELPA: July 1, 2013

Date CDE Charter Division Notified: July 1, 2013

Charter School Local Plan Implementation

The Silver Oak High School Charter will meet the Education Code Requirements for Special Education.

Education Code §56140 a-g

The County Superintendent, knowing this is an out-of-geographic Charter School, still assumes the Local Plan requirements to monitor and coordinate special education for this school. The County Superintendent and the Sonoma County Charter SELPA ensure there is a coordinated system of services to students with disabilities.

Education Code §56150 through 56177 are the responsibility of the County where the parent resides, or in the case of Foster Youth where the student is placed. The Silver Oak High School Charter LEA is aware of the location of these agencies and a resource guide has been provided with specific contact information.

Education Code §56190

The Silver Oak High School Charter LEA will have the opportunity to representation and participation with the Charter SELPA Community Advisory Committee. Meetings are scheduled for three times a year. Parents within the charter school enrollment region will have the opportunity to review and comment on Local Plan revisions. Parents will have the opportunity to attend trainings or participate via webcasting or teleconferencing.

Education Code §56195

The Silver Oak High School Charter LEA will participate in the Charter School Allocation Plan. The Silver Oak High School Charter LEA will not be treated differently with regards to funding and resource allocation.

Education Code §56195.1

The Silver Oak High School Charter LEA will adopt the Sonoma County Charter Local Plan and assurance adherence. The Sur Charter School LEA will implement and participate in the governance structure.

Through the application process the County Superintendent of Schools, the SELPA Director, and the CEO Admission Committee have reviewed and accepted this Charter LEA for membership. The committee agrees the school is either capable, or has an acceptable plan in place, to ensure services to students with disabilities.

The Silver Oak High School Charter LEA will designate specific staff to attend Charter SELPA Special Education meetings.

Education Code §56195.7

The Silver Oak High School Charter LEA adopts the Sonoma County Charter School Procedural Guide, Policies and Administrative Regulations for implementation. To ensure understanding and compliance, technical assistance and supports will be provided by SELPA staff.

The Silver Oak High School Charter LEA has agreed to participate in professional

development regarding SEIS (Special Education Information System) for the computerized IEP program and CASEMIS (California Special Education Management Information System) for submitting special education data required by the California Department of Education.

Education Code §52605

The charter school LEAs and their governing Boards have adopted the Local Plan and the twenty-nine federal assurances. The Charter SELPA staff agrees to support the Charter LEA in their implementation. Technical staff will be available.

Education Code §56205 (12) (a)

Refer to §52605.

Education Code §56205 (13)

Annually when the Silver Oak High School Charter LEA submits data to the SELPA for the Personnel Data report they will also submit staff and credential information. The SELPA staff will review data and confirm appropriate staff.

Education Code §56205 (G) (3)

Charter School LEAs in the state of California are not authorized to serve preschool students.

The Silver Oak High School Charter LEA may need additional assistance in this area which will be provided by the SELPA.

Education Code §5206

The Silver Oak High School Charter LEA will utilize the forms and procedures established to access the specialized equipment and services fund.

In the case where required services are unavailable or beyond the Charter LEA's capability, the Sonoma County Charter SELPA will contact the local geographic SELPA to see if services and/or placement can be obtained on a fee for services basis.

Education Code §56240 (Staff Development)

The Silver Oak High School Charter LEA will be provided with professional development that is necessary for them to comply with all reporting requirements. In addition, based on the needs of their school, they may request additional trainings from SELPA staff.

Monthly the SELPA provides a Staff Development Bulletin with opportunities for participation and contact information.

The SELPA also assists the Charter LEA in assessing local and regional opportunities.

The Silver Oak High School Charter LEA will have the opportunity to participate in professional development activities provided by the SELPA.

Charter SELPA School Information

Today's Date: April 7, 2014

Charter School Name: **B. Roberto Cruz Leadership Academy**

Address: P.O. Box 730453, San Jose, CA 95173 (Mailing)
14271 Story Road, San Jose, CA 95127 (Physical)

Phone: (408) 729-2281 Fax: (866) 936-3095

CDS Code: In progress

School Type: Traditional
 Independent Study
 Virtual/Distance

Grades Served: 9-12

C Beds: In progress

Special Education Contact & Title: Patricia Wales, Resource Teacher

Special Education Contact Email: pwales@nhufoundation.org

Special Education Contact Phone: (408) 7299-2281

Member of Charter Management Organization (CMO)? Yes No

If yes, Name/Address of CMO: The NHU Foundation

Name of CEO: Edward Alvarez

Authorizing District/Agency: East Side Union High School District

Date Authorized: August 22, 2013

Date Opened: August 1, 2014

Geographic SELPA/Address: N/A - New Charter School

Reason for leaving
Geographic SELPA: N/A - New Charter School

Date Charter LEA Joined
Sonoma County Charter SELPA: July 1, 2014

Date CDE Charter Division Notified: N/A - New Charter School
Date CDE Special Education Division
Notified: N/A - New Charter School

Charter School Local Plan Implementation

The B. Roberto Cruz Leadership Academy will meet the Education Code Requirements for Special Education.

Education Code §56140 a-g

The County Superintendent, knowing this is an out-of-geographic Charter School, still assumes the Local Plan requirements to monitor and coordinate special education for this school. The County Superintendent and the Sonoma County Charter SELPA ensure there is a coordinated system of services to students with disabilities.

Education Code §56150 through 56177 are the responsibility of the County where the parent resides, or in the case of Foster Youth where the student is placed. The B. Roberto Cruz Leadership Academy LEA is aware of the location of these agencies and a resource guide has been provided with specific contact information.

Education Code §56190

The B. Roberto Cruz Leadership Academy LEA will have the opportunity to representation and participation with the Charter SELPA Community Advisory Committee. Meetings are scheduled for three times a year. Parents within the charter school enrollment region will have the opportunity to review and comment on Local Plan revisions. Parents will have the opportunity to attend trainings or participate via webcasting or teleconferencing.

Education Code §56195

The B. Roberto Cruz Leadership Academy LEA will participate in the Charter School Allocation Plan. The B. Roberto Cruz Leadership Academy LEA will not be treated differently with regards to funding and resource allocation.

Education Code §56195.1

The B. Roberto Cruz Leadership Academy LEA will adopt the Sonoma County Charter Local Plan and assurance adherence. The B. Roberto Cruz Leadership Academy LEA will implement and participate in the governance structure.

Through the application process the County Superintendent of Schools, the SELPA Director, and the CEO Admission Committee have reviewed and accepted this Charter LEA for membership. The committee agrees the school is either capable, or has an acceptable plan in place, to ensure services to students with disabilities.

The B. Roberto Cruz Leadership Academy LEA will designate specific staff to attend Charter SELPA Special Education meetings.

Education Code §56195.7

The B. Roberto Cruz Leadership Academy LEA adopts the Sonoma County Charter School Procedural Guide, Policies and Administrative Regulations for implementation. To ensure understanding and compliance, technical assistance and supports will be provided by SELPA staff.

The B. Roberto Cruz Leadership Academy LEA has agreed to participate in professional

development regarding SEIS (Special Education Information System) for the computerized IEP program and CASEMIS (California Special Education Management Information System) for submitting special education data required by the California Department of Education.

Education Code §52605

The charter school LEAs and their governing Boards have adopted the Local Plan and the twenty-nine federal assurances. The Charter SELPA staff agrees to support the Charter LEA in their implementation. Technical staff will be available.

Education Code §56205 (12) (a)

Refer to §52605.

Education Code §56205 (13)

Annually when the B. Roberto Cruz Leadership Academy LEA submits data to the SELPA for the Personnel Data report they will also submit staff and credential information. The SELPA staff will review data and confirm appropriate staff.

Education Code §56205 (G) (3)

Charter School LEAs in the state of California are not authorized to serve preschool students.

The B. Roberto Cruz Leadership Academy LEA may need additional assistance in this area which will be provided by the SELPA.

Education Code §5206

The B. Roberto Cruz Leadership Academy LEA will utilize the forms and procedures established to access the specialized equipment and services fund.

In the case where required services are unavailable or beyond the Charter LEA's capability, the Sonoma County Charter SELPA will contact the local geographic SELPA to see if services and/or placement can be obtained on a fee for services basis.

Education Code §56240 (Staff Development)

The B. Roberto Cruz Leadership Academy LEA will be provided with professional development that is necessary for them to comply with all reporting requirements. In addition, based on the needs of their school, they may request additional trainings from SELPA staff.

Monthly the SELPA provides a Staff Development Bulletin with opportunities for participation and contact information.

The SELPA also assists the Charter LEA in assessing local and regional opportunities.

The B. Roberto Cruz Leadership Academy LEA will have the opportunity to participate in professional development activities provided by the SELPA.

Charter SELPA School Information

Today's Date: May 22, 2014

Name of Charter School: **Mare Island Technology Middle School**

Address: 2 Positive Place, Vallejo, CA 94589
CDS Code: 48-70581-6116255

Phone: (707) 552-6482 Fax: (707) 552-0288

School Type: Traditional
 Independent Study
 Virtual/Distance Learning

Grades Served: 6-8

CBeds: Done by authorizing district

Special Education Contact: Oliver Tabon

Special Education Contact's Phone: (707) 552-6482

Special Education Contact's Email: otabon@mitacademy.org

Member of CMO? Yes No If yes, name of CMO:

Name of CEO: Matt Smith

Authorizing District/Agency: Vallejo City Unified

Date Authorized: July 1, 2001

Date Opened: September 1, 2001

Geographic SELPA: Vallejo City Unified SELPA

Reason for leaving
Geographic SELPA: Better control of professional services

Date Charter LEA Joined
Sonoma County Charter SELPA: July 1, 2014

Date CDE Charter Division Notified: June 25, 2013
Date CDE Special Education
Division Notified: June 25, 2013

Charter School Local Plan Implementation

The Mare Island Technology Middle School will meet the Education Code Requirements for Special Education.

Education Code §56140 a-g

The County Superintendent, knowing this is an out-of-geographic Charter School, still assumes the Local Plan requirements to monitor and coordinate special education for this school. The County Superintendent and the Sonoma County Charter SELPA ensure there is a coordinated system of services to students with disabilities.

Education Code §56150 through 56177 are the responsibility of the County where the parent resides, or in the case of Foster Youth where the student is placed. The Mare Island Technology Middle School LEA is aware of the location of these agencies and a resource guide has been provided with specific contact information.

Education Code §56190

The Mare Island Technology Middle School LEA will have the opportunity to representation and participation with the Charter SELPA Community Advisory Committee. Meetings are scheduled for three times a year. Parents within the charter school enrollment region will have the opportunity to review and comment on Local Plan revisions. Parents will have the opportunity to attend trainings or participate via webcasting or teleconferencing.

Education Code §56195

The Mare Island Technology Middle School LEA will participate in the Charter School Allocation Plan. The Mare Island Technology Middle School LEA will not be treated differently with regards to funding and resource allocation.

Education Code §56195.1

The Mare Island Technology Middle School LEA will adopt the Sonoma County Charter Local Plan and assurance adherence. The Mare Island Technology Middle School LEA will implement and participate in the governance structure.

Through the application process the County Superintendent of Schools, the SELPA Director, and the CEO Admission Committee have reviewed and accepted this Charter LEA for membership. The committee agrees the school is either capable, or has an acceptable plan in place, to ensure services to students with disabilities.

The Mare Island Technology Middle School LEA will designate specific staff to attend Charter SELPA Special Education meetings.

Education Code §56195.7

The Mare Island Technology Middle School LEA adopts the Sonoma County Charter School Procedural Guide, Policies and Administrative Regulations for implementation. To ensure understanding and compliance, technical assistance and supports will be provided by SELPA staff.

The Mare Island Technology Middle School LEA has agreed to participate in professional development regarding SEIS (Special Education Information System) for the computerized IEP program and CASEMIS (California Special Education Management Information System) for

submitting special education data required by the California Department of Education.

Education Code §52605

The charter school LEAs and their governing Boards have adopted the Local Plan and the twenty-nine federal assurances. The Charter SELPA staff agrees to support the Charter LEA in their implementation. Technical staff will be available.

Education Code §56205 (12) (a)

Refer to §52605.

Education Code §56205 (13)

Annually when the Mare Island Technology Middle School LEA submits data to the SELPA for the Personnel Data report they will also submit staff and credential information. The SELPA staff will review data and confirm appropriate staff.

Education Code §56205 (G) (3)

Charter School LEAs in the state of California are not authorized to serve preschool students.

The Mare Island Technology Middle School LEA may need additional assistance in this area which will be provided by the SELPA.

Education Code §5206

The Mare Island Technology Middle School LEA will utilize the forms and procedures established to access the specialized equipment and services fund.

In the case where required services are unavailable or beyond the Charter LEA's capability, the Sonoma County Charter SELPA will contact the local geographic SELPA to see if services and/or placement can be obtained on a fee for services basis.

Education Code §56240 (Staff Development)

The Mare Island Technology Middle School LEA will be provided with professional development that is necessary for them to comply with all reporting requirements. In addition, based on the needs of their school, they may request additional trainings from SELPA staff.

Monthly the SELPA provides a Staff Development Bulletin with opportunities for participation and contact information.

The SELPA also assists the Charter LEA in assessing local and regional opportunities.

The Mare Island Technology Middle School LEA will have the opportunity to participate in professional development activities provided by the SELPA.

Charter SELPA School Information

Today's Date: May 22, 2014

Name of Charter School: **Mare Island Technology High School**

Address: 2 Positive Place, Vallejo, CA 94589
CDS Code: 48-70581-4830196
Phone: (707) 552-6482 Fax: (707) 552-0288

School Type: Traditional
 Independent Study
 Virtual/Distance Learning

Grades Served: 9-12

CBeds: Done by authorizing district

Special Education Contact: Oliver Tabon

Special Education Contact's Phone: (707) 552-6482

Special Education Contact's Email: otabon@mitacademy.org

Member of CMO? Yes No If yes, name of CMO:

Name of CEO: Matt Smith

Authorizing District/Agency: Vallejo City Unified

Date Authorized: July 1, 2001

Date Opened: September 1, 2001

Geographic SELPA: Vallejo City Unified SELPA

Reason for leaving
Geographic SELPA: Better control of professional services

Date Charter LEA Joined
Sonoma County Charter SELPA: July 1, 2014

Date CDE Charter Division Notified: June 25, 2013
Date CDE Special Education
Division Notified: June 25, 2013

Charter School Local Plan Implementation

The Mare Island Technology High School will meet the Education Code Requirements for Special Education.

Education Code §56140 a-g

The County Superintendent, knowing this is an out-of-geographic Charter School, still assumes the Local Plan requirements to monitor and coordinate special education for this school. The County Superintendent and the Sonoma County Charter SELPA ensure there is a coordinated system of services to students with disabilities.

Education Code §56150 through 56177 are the responsibility of the County where the parent resides, or in the case of Foster Youth where the student is placed. The Mare Island Technology High School LEA is aware of the location of these agencies and a resource guide has been provided with specific contact information.

Education Code §56190

The Mare Island Technology High School LEA will have the opportunity to representation and participation with the Charter SELPA Community Advisory Committee. Meetings are scheduled for three times a year. Parents within the charter school enrollment region will have the opportunity to review and comment on Local Plan revisions. Parents will have the opportunity to attend trainings or participate via webcasting or teleconferencing.

Education Code §56195

The Mare Island Technology High School LEA will participate in the Charter School Allocation Plan. The Mare Island Technology High School LEA will not be treated differently with regards to funding and resource allocation.

Education Code §56195.1

The Mare Island Technology High School LEA will adopt the Sonoma County Charter Local Plan and assurance adherence. The Mare Island Technology High School LEA will implement and participate in the governance structure.

Through the application process the County Superintendent of Schools, the SELPA Director, and the CEO Admission Committee have reviewed and accepted this Charter LEA for membership. The committee agrees the school is either capable, or has an acceptable plan in place, to ensure services to students with disabilities.

The Mare Island Technology High School LEA will designate specific staff to attend Charter SELPA Special Education meetings.

Education Code §56195.7

The Mare Island Technology High School LEA adopts the Sonoma County Charter School Procedural Guide, Policies and Administrative Regulations for implementation. To ensure understanding and compliance, technical assistance and supports will be provided by SELPA staff.

The Mare Island Technology High School LEA has agreed to participate in professional

development regarding SEIS (Special Education Information System) for the computerized IEP program and CASEMIS (California Special Education Management Information System) for submitting special education data required by the California Department of Education.

Education Code §52605

The charter school LEAs and their governing Boards have adopted the Local Plan and the twenty-nine federal assurances. The Charter SELPA staff agrees to support the Charter LEA in their implementation. Technical staff will be available.

Education Code §56205 (12) (a)

Refer to §52605.

Education Code §56205 (13)

Annually when the Mare Island Technology High School LEA submits data to the SELPA for the Personnel Data report they will also submit staff and credential information. The SELPA staff will review data and confirm appropriate staff.

Education Code §56205 (G) (3)

Charter School LEAs in the state of California are not authorized to serve preschool students.

The Mare Island Technology High School LEA may need additional assistance in this area which will be provided by the SELPA.

Education Code §5206

The Mare Island Technology High School LEA will utilize the forms and procedures established to access the specialized equipment and services fund.

In the case where required services are unavailable or beyond the Charter LEA's capability, the Sonoma County Charter SELPA will contact the local geographic SELPA to see if services and/or placement can be obtained on a fee for services basis.

Education Code §56240 (Staff Development)

The Mare Island Technology High School LEA will be provided with professional development that is necessary for them to comply with all reporting requirements. In addition, based on the needs of their school, they may request additional trainings from SELPA staff.

Monthly the SELPA provides a Staff Development Bulletin with opportunities for participation and contact information.

The SELPA also assists the Charter LEA in assessing local and regional opportunities.

The Mare Island Technology High School LEA will have the opportunity to participate in professional development activities provided by the SELPA.

Charter SELPA School Information

Today's Date: April 7, 2014

Charter School Name: **Luis Valdez Leadership Academy
(formerly named Latino College Prep Academy II)**

Address: P.O. Box 730453, San Jose, CA 95173 (Mailing)
14271 Story Road, San Jose, CA 95127 (Physical)

Phone: (408) 729-2281 Fax: (866) 936-3095

CDS Code: In progress

School Type: Traditional
 Independent Study
 Virtual/Distance

Grades Served: 9-12

CBeds: In progress

Special Education Contact & Title: Patricia Wales, Resource Teacher

Special Education Contact Email: pwales@nhufoundation.org

Special Education Contact Phone: (408) 7299-2281

Member of Charter Management Organization (CMO)? Yes No

If yes, Name/Address of CMO: The NHU Foundation

Name of CEO: Edward Alvarez

Authorizing District/Agency: East Side Union High School District

Date Authorized: August 22, 2013

Date Opened: August 1, 2014

Geographic SELPA/Address: N/A - New Charter School

Reason for leaving
Geographic SELPA: N/A - New Charter School

Date Charter LEA Joined
Sonoma County Charter SELPA: July 1, 2014
Date CDE Charter Division Notified: N/A - New Charter School
Date CDE Special Education Division
Notified: N/A - New Charter School

Charter School Local Plan Implementation

The Luis Valdez Leadership Academy will meet the Education Code Requirements for Special Education.

Education Code §56140 a-g

The County Superintendent, knowing this is an out-of-geographic Charter School, still assumes the Local Plan requirements to monitor and coordinate special education for this school. The County Superintendent and the Sonoma County Charter SELPA ensure there is a coordinated system of services to students with disabilities.

Education Code §56150 through 56177 are the responsibility of the County where the parent resides, or in the case of Foster Youth where the student is placed. The Luis Valdez Leadership Academy LEA is aware of the location of these agencies and a resource guide has been provided with specific contact information.

Education Code §56190

The Luis Valdez Leadership Academy LEA will have the opportunity to representation and participation with the Charter SELPA Community Advisory Committee. Meetings are scheduled for three times a year. Parents within the charter school enrollment region will have the opportunity to review and comment on Local Plan revisions. Parents will have the opportunity to attend trainings or participate via webcasting or teleconferencing.

Education Code §56195

The Luis Valdez Leadership Academy LEA will participate in the Charter School Allocation Plan. The Luis Valdez Leadership Academy LEA will not be treated differently with regards to funding and resource allocation.

Education Code §56195.1

The Luis Valdez Leadership Academy LEA will adopt the Sonoma County Charter Local Plan and assurance adherence. The Luis Valdez Leadership Academy LEA will implement and participate in the governance structure.

Through the application process the County Superintendent of Schools, the SELPA Director, and the CEO Admission Committee have reviewed and accepted this Charter LEA for membership. The committee agrees the school is either capable, or has an acceptable plan in place, to ensure services to students with disabilities.

The Luis Valdez Leadership Academy LEA will designate specific staff to attend Charter SELPA Special Education meetings.

Education Code §56195.7

The Luis Valdez Leadership Academy LEA adopts the Sonoma County Charter School Procedural Guide, Policies and Administrative Regulations for implementation. To ensure understanding and compliance, technical assistance and supports will be provided by SELPA staff.

The Luis Valdez Leadership Academy LEA has agreed to participate in professional

development regarding SEIS (Special Education Information System) for the computerized IEP program and CASEMIS (California Special Education Management Information System) for submitting special education data required by the California Department of Education.

Education Code §52605

The charter school LEAs and their governing Boards have adopted the Local Plan and the twenty-nine federal assurances. The Charter SELPA staff agrees to support the Charter LEA in their implementation. Technical staff will be available.

Education Code §56205 (12) (a)

Refer to §52605.

Education Code §56205 (13)

Annually when the Luis Valdez Leadership Academy LEA submits data to the SELPA for the Personnel Data report they will also submit staff and credential information. The SELPA staff will review data and confirm appropriate staff.

Education Code §56205 (G) (3)

Charter School LEAs in the state of California are not authorized to serve preschool students.

The Luis Valdez Leadership Academy LEA may need additional assistance in this area which will be provided by the SELPA.

Education Code §5206

The Luis Valdez Leadership Academy LEA will utilize the forms and procedures established to access the specialized equipment and services fund.

In the case where required services are unavailable or beyond the Charter LEA's capability, the Sonoma County Charter SELPA will contact the local geographic SELPA to see if services and/or placement can be obtained on a fee for services basis.

Education Code §56240 (Staff Development)

The Luis Valdez Leadership Academy LEA will be provided with professional development that is necessary for them to comply with all reporting requirements. In addition, based on the needs of their school, they may request additional trainings from SELPA staff.

Monthly the SELPA provides a Staff Development Bulletin with opportunities for participation and contact information.

The SELPA also assists the Charter LEA in assessing local and regional opportunities.

The Luis Valdez Leadership Academy LEA will have the opportunity to participate in professional development activities provided by the SELPA.

Charter SELPA School Information

Today's Date: March 4th, 2015__

Charter School Name: The Academy of Alameda Elementary School

Address: 401 Pacific Ave.

City: Alameda

Zip:94501

Phone: (510) 748-4017

Fax: (510) 523-5304

CDS Code: 01-61119-0131805

School Type: Traditional

Independent Study

Virtual/Distance

Grades Served: K-1, in year one, K-5 when at capacity

C Beds:

Special Education Contact & Title: Cherie Spivey, Director of Special Education__

Special Education Contact Email: cspivey@aoaschools.org

Special Education Contact Phone: (510) 748-4017 x 2101__

Member of Charter Management Organization (CMO)? Yes No

If yes, Name/Address of CMO: The Academy of Alameda

Name of CEO: Matt Huxley

Authorizing District/Agency: Alameda Unified School District

Date Authorized: October 28th, 2014

Date Opened: August 27th, 2015

Geographic SELPA/Address: N/A

Reason for leaving

Geographic SELPA: N/A

Date Charter LEA Joined Sonoma County Charter SELPA: February 18, 2015

Date CDE Charter Division Notified:04/08/15

Date CDE Special Education Division Notified: 04/08/15

Charter School Local Plan Implementation

The Academy of Alameda Elementary School will meet the Education Code Requirements for Special Education.

Education Code §56140 a-g

The County Superintendent, knowing this is an out-of-geographic Charter School, still assumes the Local Plan requirements to monitor and coordinate special education for this school. The County Superintendent and the Sonoma County Charter SELPA ensure there is a coordinated system of services to students with disabilities.

Education Code §56150 through 56177 are the responsibility of the County where the parent resides, or in the case of Foster Youth where the student is placed. The Academy of Alameda Elementary School LEA is aware of the location of these agencies and a resource guide has been provided with specific contact information.

Education Code §56190

The Academy of Alameda Elementary School LEA will have the opportunity to representation and participation with the Charter SELPA Community Advisory Committee. Meetings are scheduled for three times a year. Parents within the charter school enrollment region will have the opportunity to review and comment on Local Plan revisions. Parents will have the opportunity to attend trainings or participate via webcasting or teleconferencing.

Education Code §56195

The Academy of Alameda Elementary School LEA will participate in the Charter School Allocation Plan. The Academy of Alameda Elementary School LEA will not be treated differently with regards to funding and resource allocation.

Education Code §56195.1

The Academy of Alameda Elementary School LEA will adopt the Sonoma County Charter Local Plan and assurance adherence. The Academy of Alameda Elementary School LEA will implement and participate in the governance structure.

Through the application process the County Superintendent of Schools, the SELPA Director, and the CEO Admission Committee have reviewed and accepted this Charter LEA for membership. The committee agrees the school is either capable, or has an acceptable plan in place, to ensure services to students with disabilities.

The Academy of Alameda Elementary School LEA will designate specific staff to attend Charter SELPA Special Education meetings.

Education Code §56195.7

The Academy of Alameda Elementary School LEA adopts the Sonoma County Charter School Procedural Guide, Policies and Administrative Regulations for implementation. To ensure understanding and compliance, technical assistance and supports will be provided by SELPA staff.

The Academy of Alameda Elementary School LEA has agreed to participate in professional development regarding SEIS (Special Education Information System) for the computerized IEP program and CASEMIS (California Special Education Management Information System) for

submitting special education data required by the California Department of Education.

Education Code §52605

The charter school LEAs and their governing Boards have adopted the Local Plan and the twenty-nine federal assurances. The Charter SELPA staff agrees to support the Charter LEA in their implementation. Technical staff will be available.

Education Code §56205 (12) (a)

Refer to §52605.

Education Code §56205 (13)

Annually when the Academy of Alameda Elementary School LEA submits data to the SELPA for the Personnel Data report they will also submit staff and credential information. The SELPA staff will review data and confirm appropriate staff.

Education Code §56205 (G) (3)

Charter School LEAs in the state of California are not authorized to serve preschool students.

The Academy of Alameda Elementary School LEA may need additional assistance in this area which will be provided by the SELPA.

Education Code §5206

The Academy of Alameda Elementary School LEA will utilize the forms and procedures established to access the specialized equipment and services fund.

In the case where required services are unavailable or beyond the Charter LEA's capability, the Sonoma County Charter SELPA will contact the local geographic SELPA to see if services and/or placement can be obtained on a fee for services basis.

Education Code §56240 (Staff Development)

The Academy of Alameda Elementary School LEA will be provided with professional development that is necessary for them to comply with all reporting requirements. In addition, based on the needs of their school, they may request additional trainings from SELPA staff.

Monthly the SELPA provides a Staff Development Bulletin with opportunities for participation and contact information.

The SELPA also assists the Charter LEA in assessing local and regional opportunities.

The Academy of Alameda Elementary School LEA will have the opportunity to participate in professional development activities provided by the SELPA.

Charter SELPA School Information

Today's Date: 3/02/15_____

Charter School Name: Bay View Academy

Address: 222 Casa Verde Way

City: Monterey

Zip:93940

Phone: 831.717.4630

Fax: 831.717.4261

CDS Code: 27-10272-0124297

School Type: Traditional

Independent Study

Virtual/Distance

Grades Served: K-8

C Beds:

Special Education Contact & Title: Marti Bryant_

Special Education Contact Email: Marti.Bryan@bayview-academy.org

Special Education Contact Phone: 831.717.4630_____

Member of Charter Management Organization (CMO)? Yes No

If yes, Name/Address of CMO:

Name of CEO: Anna Moore

Authorizing District/Agency: Monterey County Office of Education

Date Authorized: March 2011

Date Opened: Aug. 15, 2011

Geographic SELPA/Address: 901 Blanco Circle Salinas, CA

Reason for leaving

Geographic SELPA: To join a SELPA specifically designed to provide services for charter schools (in our area).

Date Charter LEA Joined Sonoma County Charter SELPA: July 1st, 2015

Date CDE Charter Division Notified: March 9th, 2015

Date CDE Special Education Division Notified: March 9th, 2015

Charter School Local Plan Implementation

The Bay View Academy will meet the Education Code Requirements for Special Education.

Education Code §56140 a-g

The County Superintendent, knowing this is an out-of-geographic Charter School, still assumes the Local Plan requirements to monitor and coordinate special education for this school. The County Superintendent and the Sonoma County Charter SELPA ensure there is a coordinated system of services to students with disabilities.

Education Code §56150 through 56177 are the responsibility of the County where the parent resides, or in the case of Foster Youth where the student is placed. The Bay View Academy LEA is aware of the location of these agencies and a resource guide has been provided with specific contact information.

Education Code §56190

The Bay View Academy LEA will have the opportunity to representation and participation with the Charter SELPA Community Advisory Committee. Meetings are scheduled for three times a year. Parents within the charter school enrollment region will have the opportunity to review and comment on Local Plan revisions. Parents will have the opportunity to attend trainings or participate via webcasting or teleconferencing.

Education Code §56195

The Bay View Academy LEA will participate in the Charter School Allocation Plan. The Bay View Academy LEA will not be treated differently with regards to funding and resource allocation.

Education Code §56195.1

The Bay View Academy LEA will adopt the Sonoma County Charter Local Plan and assurance adherence. The Bay View Academy LEA will implement and participate in the governance structure.

Through the application process the County Superintendent of Schools, the SELPA Director, and the CEO Admission Committee have reviewed and accepted this Charter LEA for membership. The committee agrees the school is either capable, or has an acceptable plan in place, to ensure services to students with disabilities.

The Bay View Academy LEA will designate specific staff to attend Charter SELPA Special Education meetings.

Education Code §56195.7

The Bay View Academy LEA adopts the Sonoma County Charter School Procedural Guide, Policies and Administrative Regulations for implementation. To ensure understanding and compliance, technical assistance and supports will be provided by SELPA staff.

The Bay View Academy LEA has agreed to participate in professional development regarding SEIS (Special Education Information System) for the computerized IEP program and

CASEMIS (California Special Education Management Information System) for submitting special education data required by the California Department of Education.

Education Code §52605

The charter school LEAs and their governing Boards have adopted the Local Plan and the twenty-nine federal assurances. The Charter SELPA staff agrees to support the Charter LEA in their implementation. Technical staff will be available.

Education Code §56205 (12) (a)

Refer to §52605.

Education Code §56205 (13)

Annually when the Bay View Academy LEA submits data to the SELPA for the Personnel Data report they will also submit staff and credential information. The SELPA staff will review data and confirm appropriate staff.

Education Code §56205 (G) (3)

Charter School LEAs in the state of California are not authorized to serve preschool students.

The Bay View Academy LEA may need additional assistance in this area which will be provided by the SELPA.

Education Code §5206

The Bay View Academy LEA will utilize the forms and procedures established to access the specialized equipment and services fund.

In the case where required services are unavailable or beyond the Charter LEA's capability, the Sonoma County Charter SELPA will contact the local geographic SELPA to see if services and/or placement can be obtained on a fee for services basis.

Education Code §56240 (Staff Development)

The Bay View Academy LEA will be provided with professional development that is necessary for them to comply with all reporting requirements. In addition, based on the needs of their school, they may request additional trainings from SELPA staff.

Monthly the SELPA provides a Staff Development Bulletin with opportunities for participation and contact information.

The SELPA also assists the Charter LEA in assessing local and regional opportunities.

The Bay View Academy LEA will have the opportunity to participate in professional development activities provided by the SELPA.

Charter SELPA School Information

Today's Date: 3/12/2015__

Charter School Name: Oakland Unity Middle School

Address: 6038 Brann Street

City: Oakland, CA

Zip:94605

Phone: 510-635-7170

Fax: 510-722-2731

CDS Code: 01-10017-0131581

School Type: Traditional

Independent Study

Virtual/Distance

Grades Served: 6-8

C Beds: No data

Special Education Contact & Title: Heather Clements, Resource Specialist

Special Education Contact Email: hclements@unityhigh.org

Special Education Contact Phone: 510-635-7170_____

Member of Charter Management Organization (CMO)? Yes No

If yes, Name/Address of CMO:

Name of CEO: Lance Tsang

Authorizing District/Agency: Alameda County Office of Education

Date Authorized: 6/2014

Date Opened: 8/2015

Geographic SELPA/Address: Not applicable, new school

Reason for leaving

Geographic SELPA: Not applicable, new school

Date Charter LEA Joined Sonoma County Charter SELPA: 3/12/15

Date CDE Charter Division Notified:5/8/15

Date CDE Special Education Division Notified: 5/8/15

Charter School Local Plan Implementation

The Oakland Unity Middle School LEA will meet the Education Code Requirements for Special Education.

Education Code §56140 a-g

The County Superintendent, knowing this is an out-of-geographic Charter School, still assumes the Local Plan requirements to monitor and coordinate special education for this school. The County Superintendent and the Sonoma County Charter SELPA ensure there is a coordinated system of services to students with disabilities.

Education Code §56150 through 56177 are the responsibility of the County where the parent resides, or in the case of Foster Youth where the student is placed. The Oakland Unity Middle School LEA is aware of the location of these agencies and a resource guide has been provided with specific contact information.

Education Code §56190

The Oakland Unity Middle School LEA will have the opportunity to representation and participation with the Charter SELPA Community Advisory Committee. Meetings are scheduled for three times a year. Parents within the charter school enrollment region will have the opportunity to review and comment on Local Plan revisions. Parents will have the opportunity to attend trainings or participate via webcasting or teleconferencing.

Education Code §56195

The Oakland Unity Middle School LEA will participate in the Charter School Allocation Plan. The Oakland Unity Middle School LEA will not be treated differently with regards to funding and resource allocation.

Education Code §56195.1

The Oakland Unity Middle School LEA will adopt the Sonoma County Charter Local Plan and assurance adherence. The Oakland Unity Middle School LEA will implement and participate in the governance structure.

Through the application process the County Superintendent of Schools, the SELPA Director, and the CEO Admission Committee have reviewed and accepted this Charter LEA for membership. The committee agrees the school is either capable, or has an acceptable plan in place, to ensure services to students with disabilities.

The Oakland Unity Middle School LEA will designate specific staff to attend Charter SELPA Special Education meetings.

Education Code §56195.7

The Oakland Unity Middle School LEA adopts the Sonoma County Charter School Procedural Guide, Policies and Administrative Regulations for implementation. To ensure understanding and compliance, technical assistance and supports will be provided by SELPA staff.

The Oakland Unity Middle School LEA has agreed to participate in professional development

regarding SEIS (Special Education Information System) for the computerized IEP program and CASEMIS (California Special Education Management Information System) for submitting special education data required by the California Department of Education.

Education Code §52605

The charter school LEAs and their governing Boards have adopted the Local Plan and the twenty-nine federal assurances. The Charter SELPA staff agrees to support the Charter LEA in their implementation. Technical staff will be available.

Education Code §56205 (12) (a)

Refer to §52605.

Education Code §56205 (13)

Annually when the Oakland Unity Middle School LEA submits data to the SELPA for the Personnel Data report they will also submit staff and credential information. The SELPA staff will review data and confirm appropriate staff.

Education Code §56205 (G) (3)

Charter School LEAs in the state of California are not authorized to serve preschool students.

The Oakland Unity Middle School LEA may need additional assistance in this area which will be provided by the SELPA.

Education Code §5206

The Oakland Unity Middle School LEA will utilize the forms and procedures established to access the specialized equipment and services fund.

In the case where required services are unavailable or beyond the Charter LEA's capability, the Sonoma County Charter SELPA will contact the local geographic SELPA to see if services and/or placement can be obtained on a fee for services basis.

Education Code §56240 (Staff Development)

The Oakland Unity Middle School LEA will be provided with professional development that is necessary for them to comply with all reporting requirements. In addition, based on the needs of their school, they may request additional trainings from SELPA staff.

Monthly the SELPA provides a Staff Development Bulletin with opportunities for participation and contact information.

The SELPA also assists the Charter LEA in assessing local and regional opportunities.

The Oakland Unity Middle School LEA will have the opportunity to participate in professional development activities provided by the SELPA.

Charter SELPA School Information

Today's Date: 3/10/2015_

Charter School Name: Voices College-Bound Language Academy at Morgan Hill

Address: TBD

City: Morgan Hill

Zip: 95037

Phone: 408-361-1960

Fax: 408-361-1979

CDS Code: 43-10439-0131748

School Type: Traditional
 Independent Study
 Virtual/Distance

Grades Served: K-8 C Beds: TBD Special

Education Contact & Title: Frances Teso_____

Special Education Contact Email: fteso@voicescharterschool.com

Special Education Contact Phone: 408-361-1960__

Member of Charter Management Organization (CMO)? Yes No

If yes, Name/Address of CMO: Voices College-Bound Language Academies Name
of CEO: Frances Teso

Authorizing District/Agency: Santa Clara County Office of Education

Date Authorized: 11-19-2014

Date Opened: 9/8/2015

Geographic SELPA/Address: 1290 Ridder Park Dr. S.J. CA 95131

Reason for leaving

Geographic SELPA: To have better quality and consistency of the administration and operation of the SPED program if all Voices schools are part of the Sonoma Charter SELPA.

Date Charter LEA Joined Sonoma County Charter SELPA: 2/18/2015

Date CDE Charter Division Notified: 12/8/14

Date CDE Special Education Division Notified: May 8, 2015

Charter School Local Plan Implementation

The Voices College-Bound Language Academy at Morgan Hill will meet the Education Code Requirements for Special Education.

Education Code §56140 a-g

The County Superintendent, knowing this is an out-of-geographic Charter School, still assumes the Local Plan requirements to monitor and coordinate special education for this school. The County Superintendent and the Sonoma County Charter SELPA ensure there is a coordinated system of services to students with disabilities.

Education Code §56150 through 56177 are the responsibility of the County where the parent resides, or in the case of Foster Youth where the student is placed. The Voices College-Bound Language Academy at Morgan Hill LEA is aware of the location of these agencies and a resource guide has been provided with specific contact information.

Education Code §56190

The Voices College-Bound Language Academy at Morgan Hill LEA will have the opportunity to representation and participation with the Charter SELPA Community Advisory Committee. Meetings are scheduled for three times a year. Parents within the charter school enrollment region will have the opportunity to review and comment on Local Plan revisions. Parents will have the opportunity to attend trainings or participate via webcasting or teleconferencing.

Education Code §56195

The Voices College-Bound Language Academy at Morgan Hill LEA will participate in the Charter School Allocation Plan. The Voices College-Bound Language Academy at Morgan Hill LEA will not be treated differently with regards to funding and resource allocation.

Education Code §56195.1

The Voices College-Bound Language Academy at Morgan Hill LEA will adopt the Sonoma County Charter Local Plan and assurance adherence. The Voices College-Bound Language Academy at Morgan Hill LEA will implement and participate in the governance structure.

Through the application process the County Superintendent of Schools, the SELPA Director, and the CEO Admission Committee have reviewed and accepted this Charter LEA for membership. The committee agrees the school is either capable, or has an acceptable plan in place, to ensure services to students with disabilities.

The Voices College-Bound Language Academy at Morgan Hill LEA will designate specific staff to attend Charter SELPA Special Education meetings.

Education Code §56195.7

The Voices College-Bound Language Academy at Morgan Hill LEA adopts the Sonoma County Charter School Procedural Guide, Policies and Administrative Regulations for implementation. To ensure understanding and compliance, technical assistance and supports will be provided by SELPA staff.

The Voices College-Bound Language Academy at Morgan Hill LEA has agreed to participate in professional development regarding SEIS (Special Education Information System) for the computerized IEP program and CASEMIS (California Special Education Management Information System) for submitting special education data required by the California Department of Education.

Education Code §52605

The charter school LEAs and their governing Boards have adopted the Local Plan and the twenty-nine federal assurances. The Charter SELPA staff agrees to support the Charter LEA in their implementation. Technical staff will be available.

Education Code §56205 (12) (a)

Refer to §52605.

Education Code §56205 (13)

Annually when the Voices College-Bound Language Academy at Morgan Hill LEA submits data to the SELPA for the Personnel Data report they will also submit staff and credential information. The SELPA staff will review data and confirm appropriate staff.

Education Code §56205 (G) (3)

Charter School LEAs in the state of California are not authorized to serve preschool students.

The Voices College-Bound Language Academy at Morgan Hill LEA may need additional assistance in this area which will be provided by the SELPA.

Education Code §5206

The Voices College-Bound Language Academy at Morgan Hill LEA will utilize the forms and procedures established to access the specialized equipment and services fund.

In the case where required services are unavailable or beyond the Charter LEA's capability, the Sonoma County Charter SELPA will contact the local geographic SELPA to see if services and/or placement can be obtained on a fee for services basis.

Education Code §56240 (Staff Development)

The Voices College-Bound Language Academy at Morgan Hill LEA will be provided with professional development that is necessary for them to comply with all reporting requirements. In addition, based on the needs of their school, they may request additional trainings from SELPA staff.

Monthly the SELPA provides a Staff Development Bulletin with opportunities for participation and contact information.

The SELPA also assists the Charter LEA in assessing local and regional opportunities.

The Voices College-Bound Language Academy at Morgan Hill LEA will have the opportunity to participate in professional development activities provided by the SELPA.

Charter SELPA School Information

Today's Date: 3/10/2015__

Charter School Name: Voices College-Bound Language Academy at Mt. Pleasant

Address: TBD

City: Mt. Pleasant

Zip: 95037

Phone: 408-361-1960

Fax: 408-361-1979

CDS Code: 43-10439-0131748

School Type: Traditional
 Independent Study
 Virtual/Distance

Grades Served: K-8 C Beds: TBD Special

Education Contact & Title: Frances Teso_____

Special Education Contact Email: fteso@voicescharterschool.com

Special Education Contact Phone: 408-361-1960__

Member of Charter Management Organization (CMO)? Yes No

If yes, Name/Address of CMO: Voices College-Bound Language Academies Name
of CEO: Frances Teso

Authorizing District/Agency: Santa Clara County Office of Education

Date Authorized: 11-19-2014

Date Opened: 9/8/2015

Geographic SELPA/Address: 1290 Ridder Park Dr. S.J. CA 95131

Reason for leaving

Geographic SELPA: To have better quality and consistency of the administration and operation of the SPED program if all Voices schools are part of the Sonoma Charter SELPA.

Date Charter LEA Joined Sonoma County Charter SELPA: 2/18/2015

Date CDE Charter Division Notified: 12/8/14

Date CDE Special Education Division Notified: May 8, 2015

Charter School Local Plan Implementation

The Voices College-Bound Language Academy at Mt. Pleasant will meet the Education Code Requirements for Special Education.

Education Code §56140 a-g

The County Superintendent, knowing this is an out-of-geographic Charter School, still assumes the Local Plan requirements to monitor and coordinate special education for this school. The County Superintendent and the Sonoma County Charter SELPA ensure there is a coordinated system of services to students with disabilities.

Education Code §56150 through 56177 are the responsibility of the County where the parent resides, or in the case of Foster Youth where the student is placed. The Voices College-Bound Language Academy at Mt. Pleasant LEA is aware of the location of these agencies and a resource guide has been provided with specific contact information.

Education Code §56190

The Voices College-Bound Language Academy at Mt. Pleasant LEA will have the opportunity to representation and participation with the Charter SELPA Community Advisory Committee. Meetings are scheduled for three times a year. Parents within the charter school enrollment region will have the opportunity to review and comment on Local Plan revisions. Parents will have the opportunity to attend trainings or participate via webcasting or teleconferencing.

Education Code §56195

The Voices College-Bound Language Academy at Mt. Pleasant LEA will participate in the Charter School Allocation Plan. The Voices College-Bound Language Academy at Mt. Pleasant LEA will not be treated differently with regards to funding and resource allocation.

Education Code §56195.1

The Voices College-Bound Language Academy at Mt. Pleasant LEA will adopt the Sonoma County Charter Local Plan and assurance adherence. The Voices College-Bound Language Academy at Mt. Pleasant LEA will implement and participate in the governance structure.

Through the application process the County Superintendent of Schools, the SELPA Director, and the CEO Admission Committee have reviewed and accepted this Charter LEA for membership. The committee agrees the school is either capable, or has an acceptable plan in place, to ensure services to students with disabilities.

The Voices College-Bound Language Academy at Mt. Pleasant LEA will designate specific staff to attend Charter SELPA Special Education meetings.

Education Code §56195.7

The Voices College-Bound Language Academy at Mt. Pleasant LEA adopts the Sonoma County Charter School Procedural Guide, Policies and Administrative Regulations for implementation. To ensure understanding and compliance, technical assistance and supports will be provided by SELPA staff.

The Voices College-Bound Language Academy at Mt. Pleasant LEA has agreed to participate in professional development regarding SEIS (Special Education Information System) for the computerized IEP program and CASEMIS (California Special Education Management Information System) for submitting special education data required by the California Department of Education.

Education Code §52605

The charter school LEAs and their governing Boards have adopted the Local Plan and the twenty-nine federal assurances. The Charter SELPA staff agrees to support the Charter LEA in their implementation. Technical staff will be available.

Education Code §56205 (12) (a)

Refer to §52605.

Education Code §56205 (13)

Annually when the Voices College-Bound Language Academy at Mt. Pleasant LEA submits data to the SELPA for the Personnel Data report they will also submit staff and credential information. The SELPA staff will review data and confirm appropriate staff.

Education Code §56205 (G) (3)

Charter School LEAs in the state of California are not authorized to serve preschool students.

The Voices College-Bound Language Academy at Mt. Pleasant LEA may need additional assistance in this area which will be provided by the SELPA.

Education Code §5206

The Voices College-Bound Language Academy at Mt. Pleasant LEA will utilize the forms and procedures established to access the specialized equipment and services fund.

In the case where required services are unavailable or beyond the Charter LEA's capability, the Sonoma County Charter SELPA will contact the local geographic SELPA to see if services and/or placement can be obtained on a fee for services basis.

Education Code §56240 (Staff Development)

The Voices College-Bound Language Academy at Mt. Pleasant LEA will be provided with professional development that is necessary for them to comply with all reporting requirements. In addition, based on the needs of their school, they may request additional trainings from SELPA staff.

Monthly the SELPA provides a Staff Development Bulletin with opportunities for participation and contact information.

The SELPA also assists the Charter LEA in assessing local and regional opportunities.

The Voices College-Bound Language Academy at Mt. Pleasant LEA will have the opportunity to participate in professional development activities provided by the SELPA.