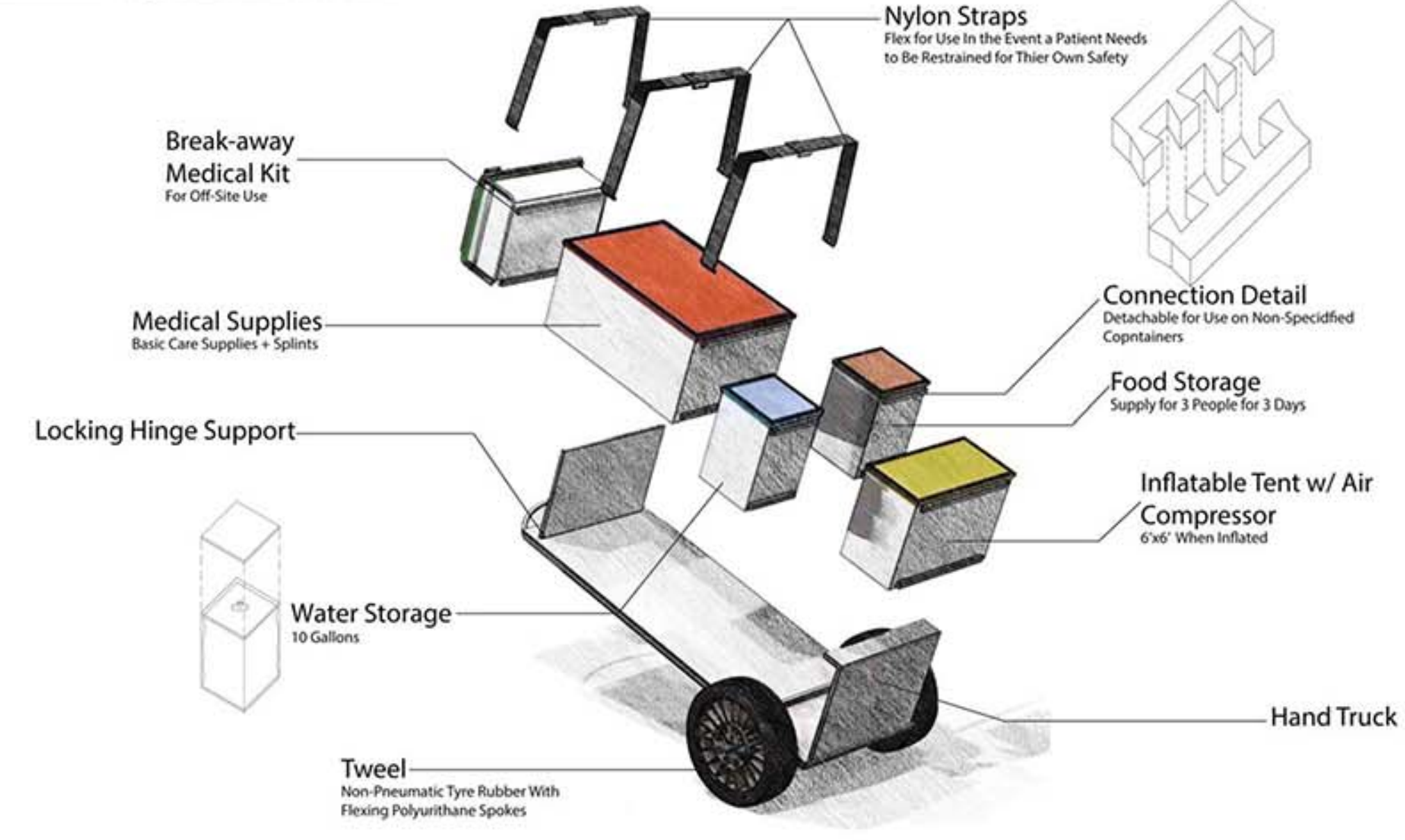


Medical Clinic, Fort Liberté, Haiti - Wilson Sawyer, Laura Sherborne, Alicia Wetherington

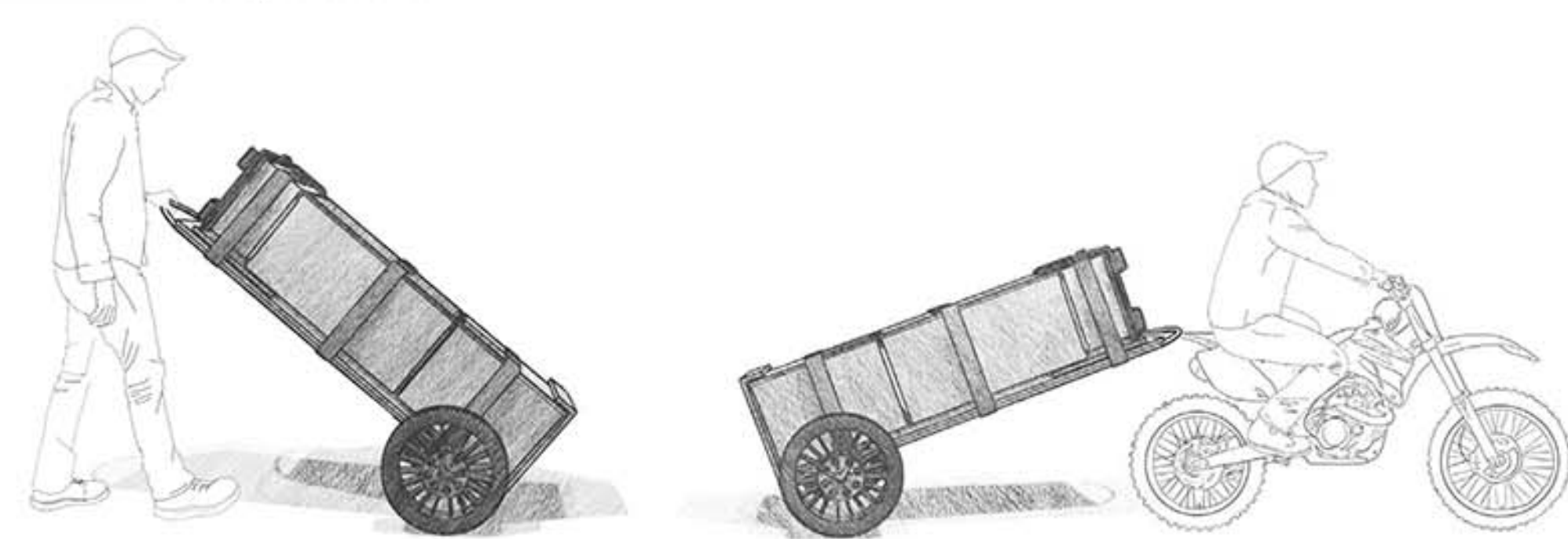
Kabwet Clinic Mobile Medical Unit

This project, the Kabwet Clinic, is the design of a mobile medical unit meant to be used in rural locations by Haitians for Haitians. The unit would be stored in the city hospitals and deployed to remote locations on a systematic, daily basis in order to help release the existing pressure of overwhelming medical need in those areas. The design for the Kabwet Clinic is easily sustainable in such an area due to its ability to travel through diverse terrains by a variety of vehicles, and existing components that can be replaced by local materials. Its design maximizes its lifespan and functionality. The key to the success of the Kabwet Clinic is its implementation into the Haitian culture and continued use by its population.

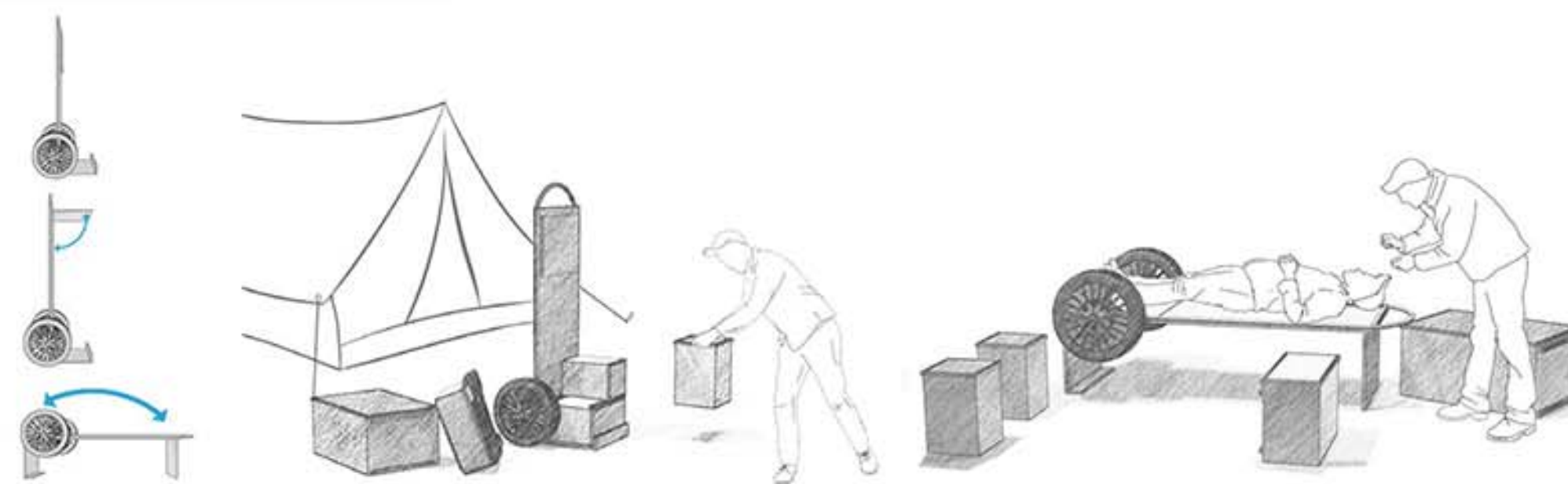
Exploded Axon



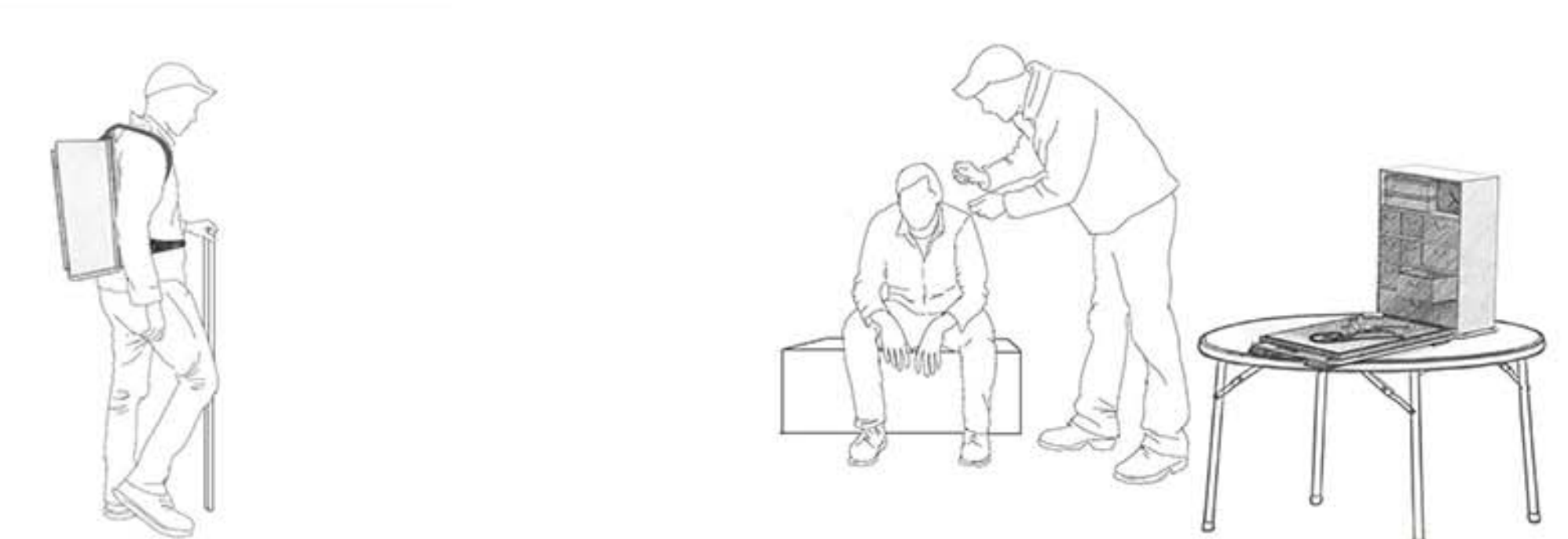
Transportation



Transformation



Break Away Pack



Pack Details



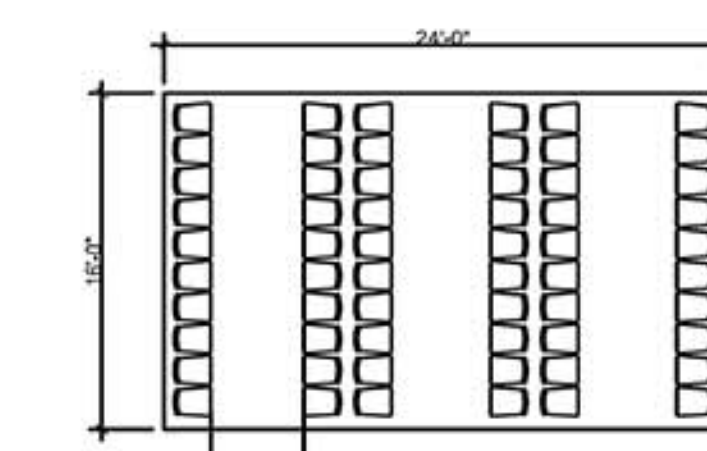
Object Lifespan



Haiti Fort Liberté

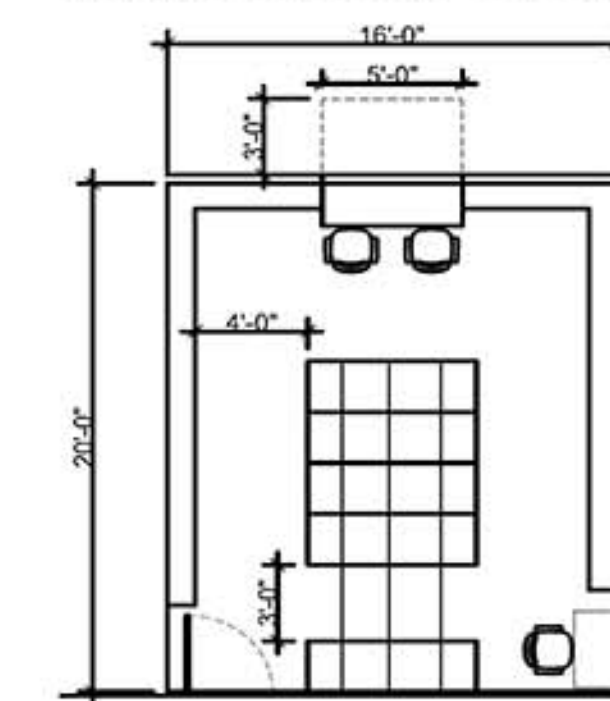
Prototypicals Space & Description

Waiting area - 384 S.F.



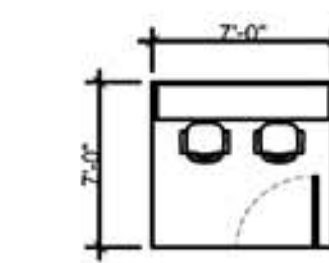
An area for patient waiting for 60 people. Public health awareness needs to be facilitated. Isolated from exam and observation rooms. Designed to keep order and calm among visitors.

Check-in & Records - 355 S.F.



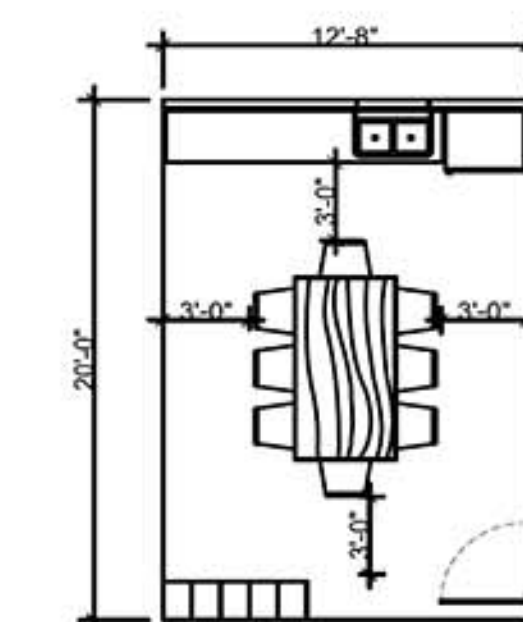
An area for staff to register patients. A place for staff to access medical records for 24,000 people - includes electronic records capabilities.

Office - 49 S.F.



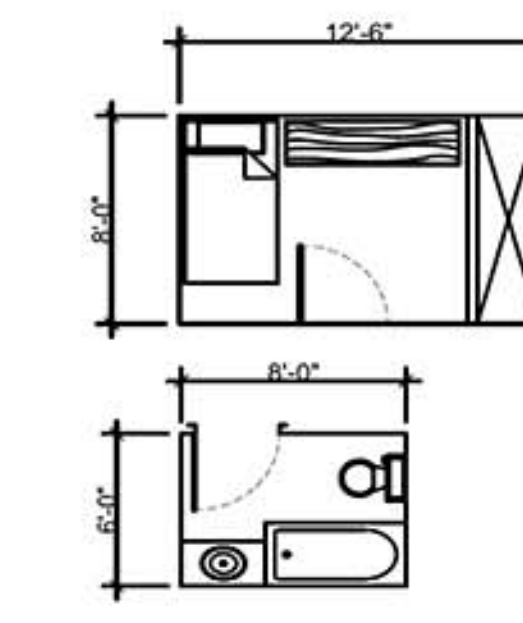
A lock space for resident physician and clinic manager.

Staff Break - 220 S.F.



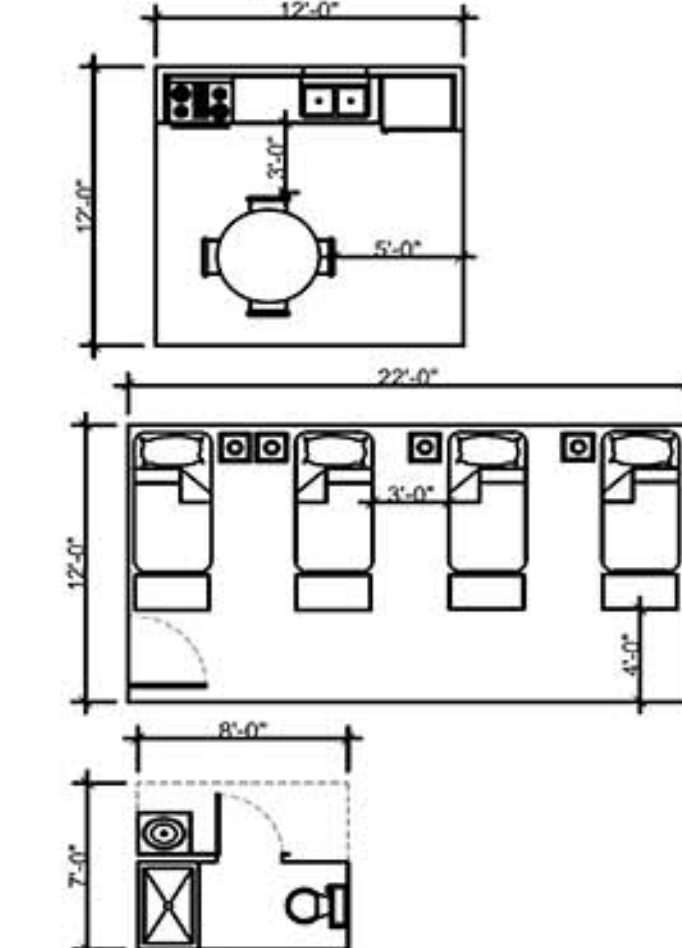
Area for 6 staff to take breaks and store personal belongings. Isolated for security.

Apartment - 284 S.F.



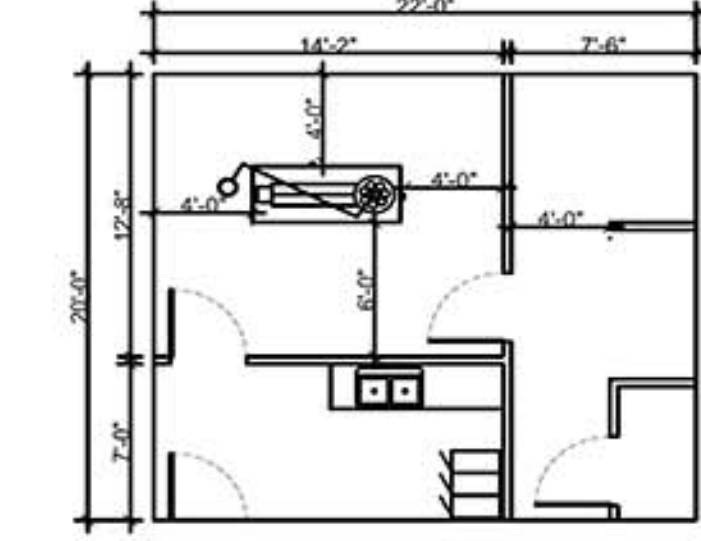
Self-contained living space for accommodating long-term visiting doctor - kitchen, bathroom, storage

Dormitory - 278 S.F.



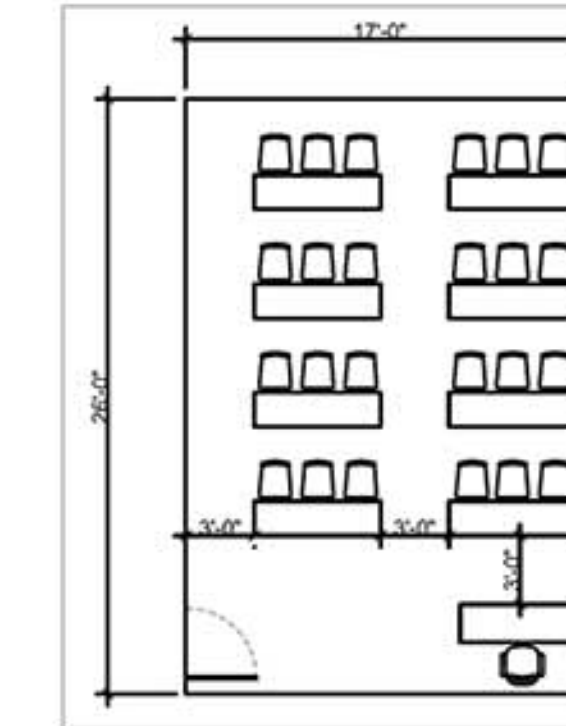
Space with beds for 4 short-term practitioners - shared kitchen and bathroom

Surgical - 440 S.F.



Space for minor surgery to compliment existing functions of the clinic.

Classroom - 442 S.F.



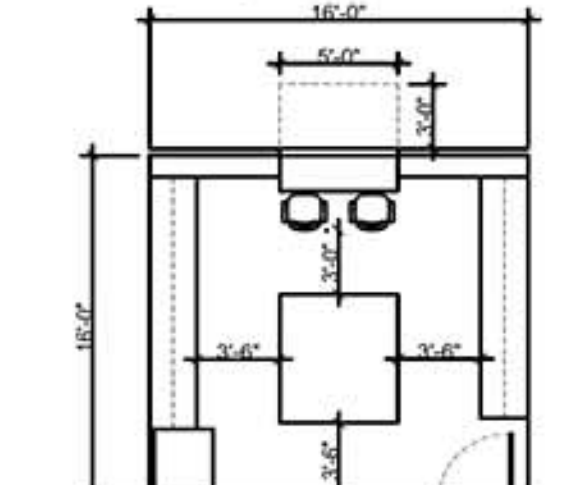
Health education for 24 people + instructor

Laboratory - 256 S.F.



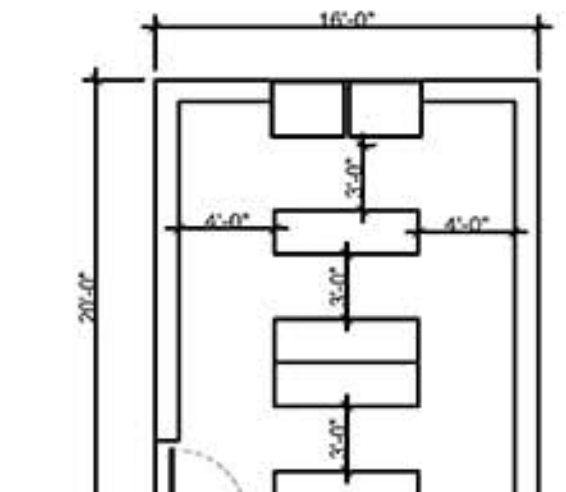
A relatively large space for technicians with ample work space to perform tests and keep samples.

Pharmacy - 256 S.F.



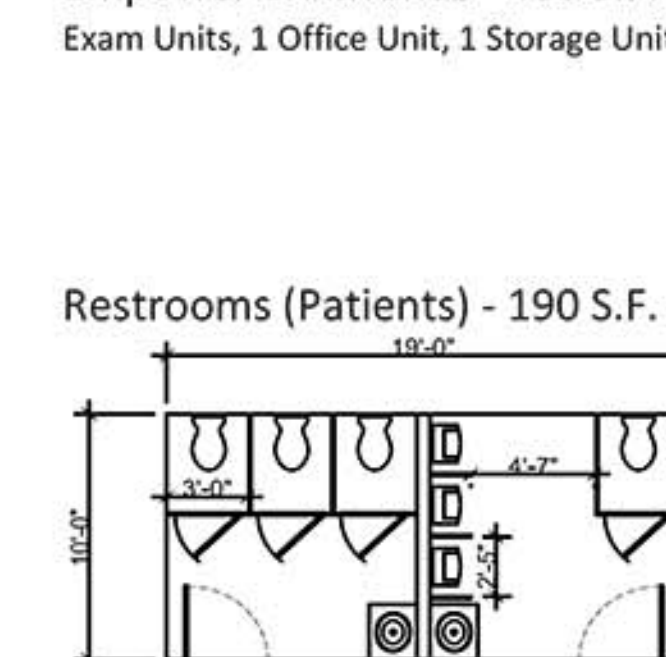
A room for storing and dispensing medicines with limited access for security and a dispensing window.

Supply - 320 S.F.



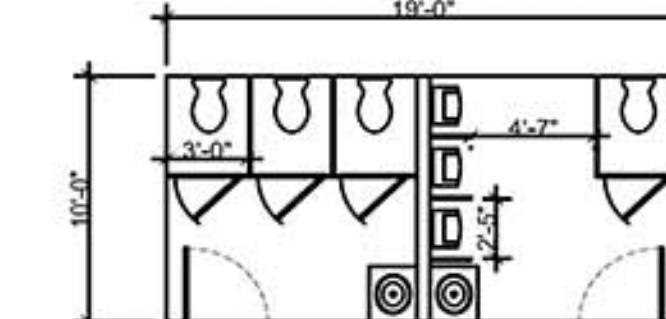
Secure, centrally located room to supply pharmacy, exam and observation rooms. This room is kept very clean and sealed off from the outside environment and very organized.

Empower & Advance - 465 S.F.



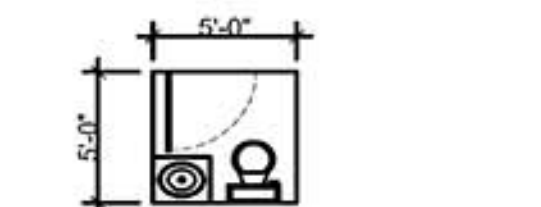
2 separate exam rooms for paramedic staff with a separate office for 2 people, secure parking for ambulance and storage for mobile medical units.

Restrooms (Patients) - 190 S.F.



Serving men and women separately 3 stalls for each space.

Restroom (Staff) - 25 S.F.



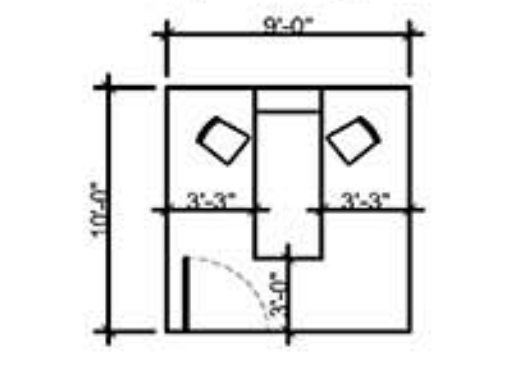
A unisex restroom for staff -

Exam (General) - 80 S.F.



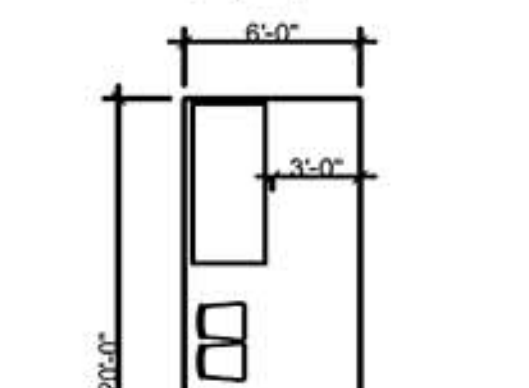
Space for examining patients with room for patient, medical practitioner and family member

Exam (Dentist) - 90 S.F.



Space for examining patient with equipment for dentistry - may also be used as a general exam room.

Exam (Eyes) - 120 S.F.



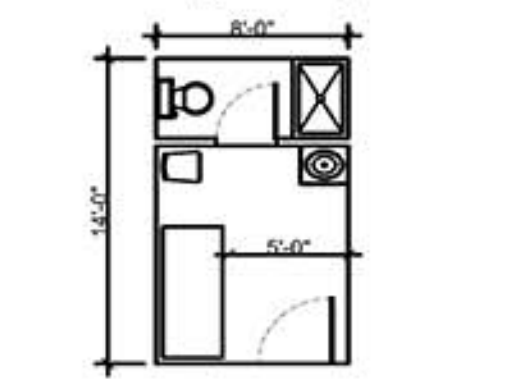
Space for examining patient with equipment for eye examinations - may also be used as a general exam room.

Observation - 80 S.F.



Area for observing patients with more complex conditions. Areas are separated by curtains for semi-privacy

Overnight Stay - 104 S.F.

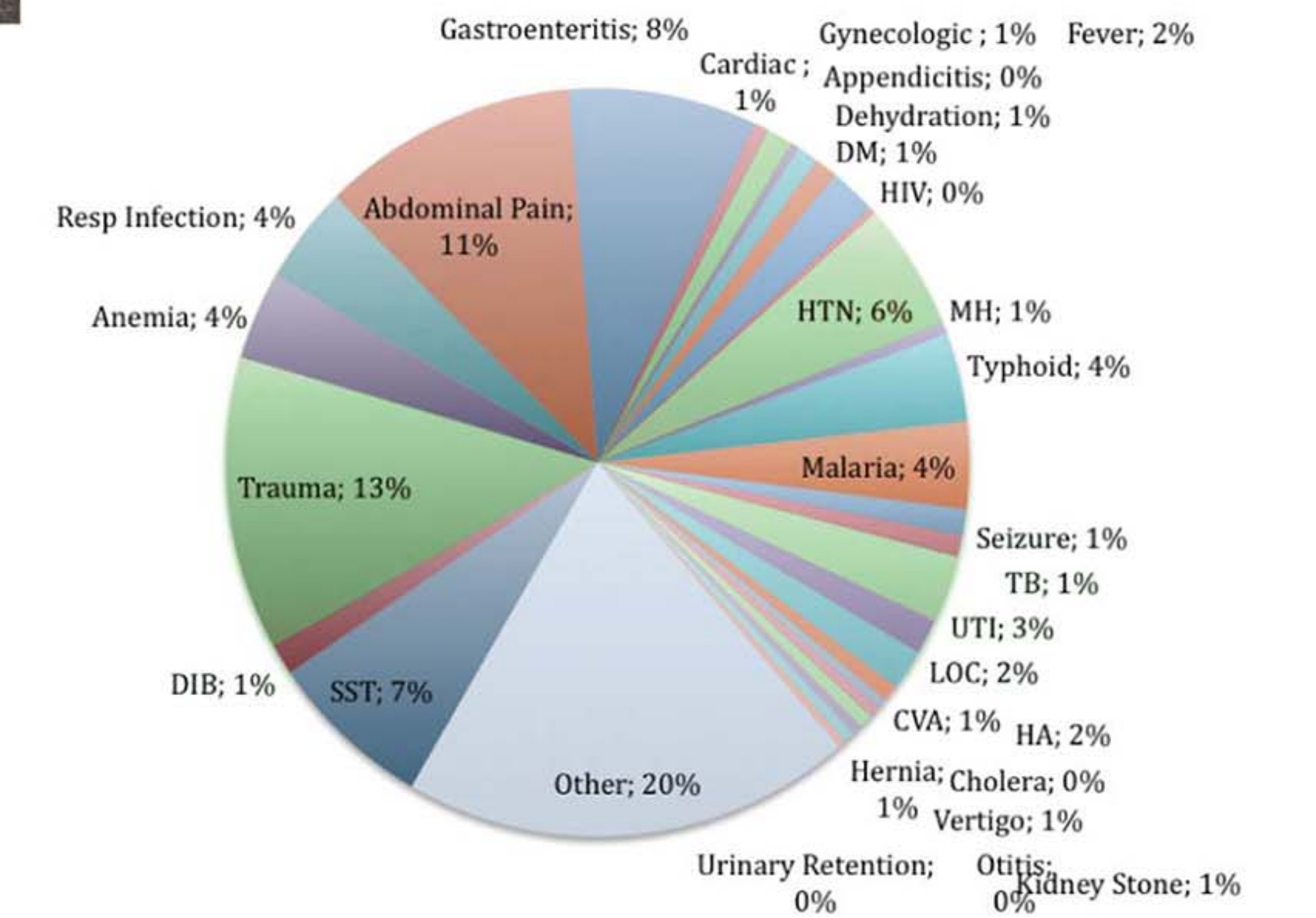


Area for delicate or highly infectious conditions isolated from the rest of the units.

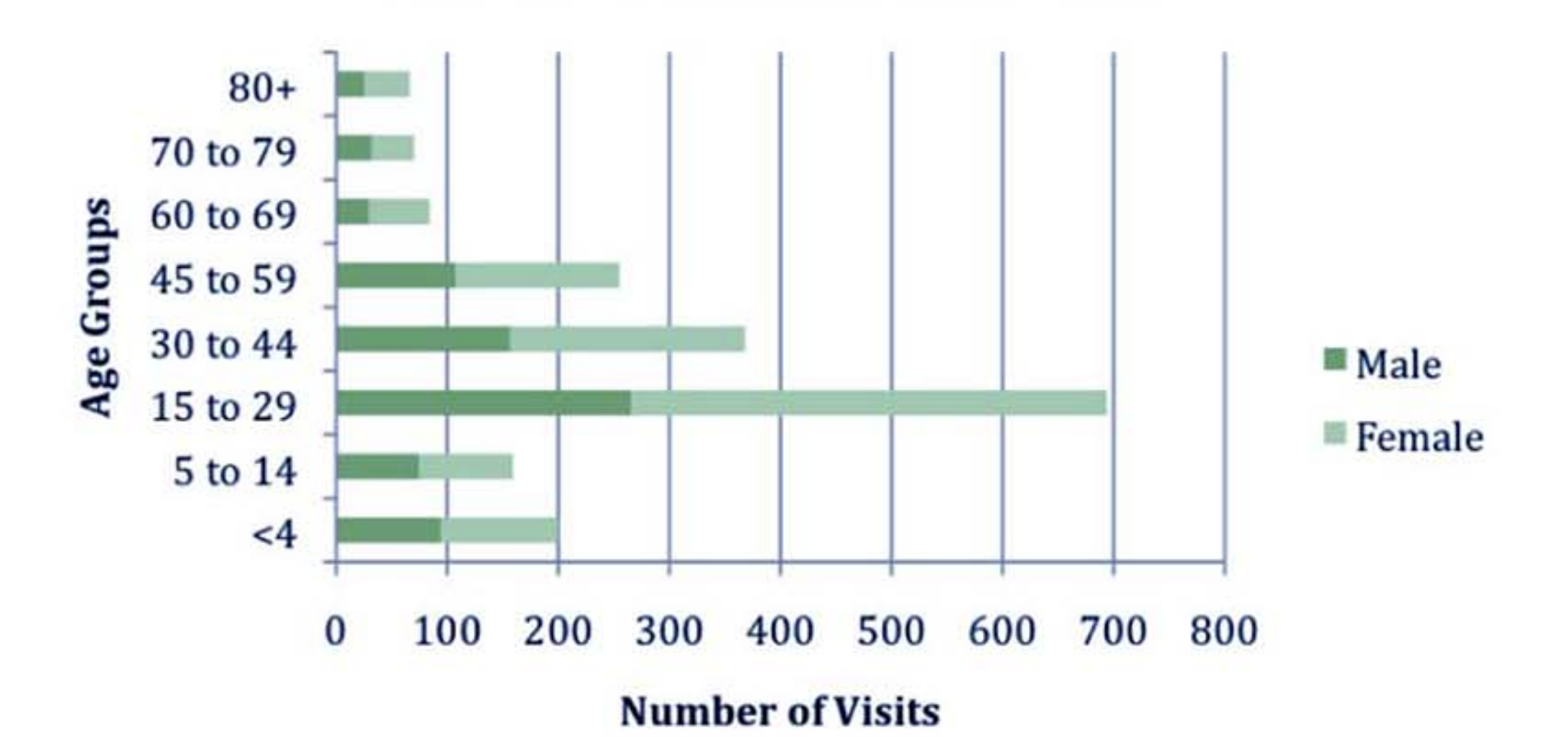
Fort Liberté Patient Information

The research below was done by Empower and Advance in Fort Liberté from 2009-2010. These charts detail the type of patients that visited Fort Liberté Hospital from a collection of 2000 patient records dated from those years as well as the results of a survey taken across 50 homes in the area in order to gain understanding of the local populace's view on health care and hospitals. As is evident from the research, nearly three times as many women came to the hospital as men and the vast majority of the patients were between the ages of 15 and 29. A need to improve the patient records system was made clear as of the 2000 total charts that were reviewed. 134 of the charts did not have diagnostic information or the information was illegible, 21 were missing sex, 84 were missing age.

Visitor Information



VISITS BY AGE AND SEX

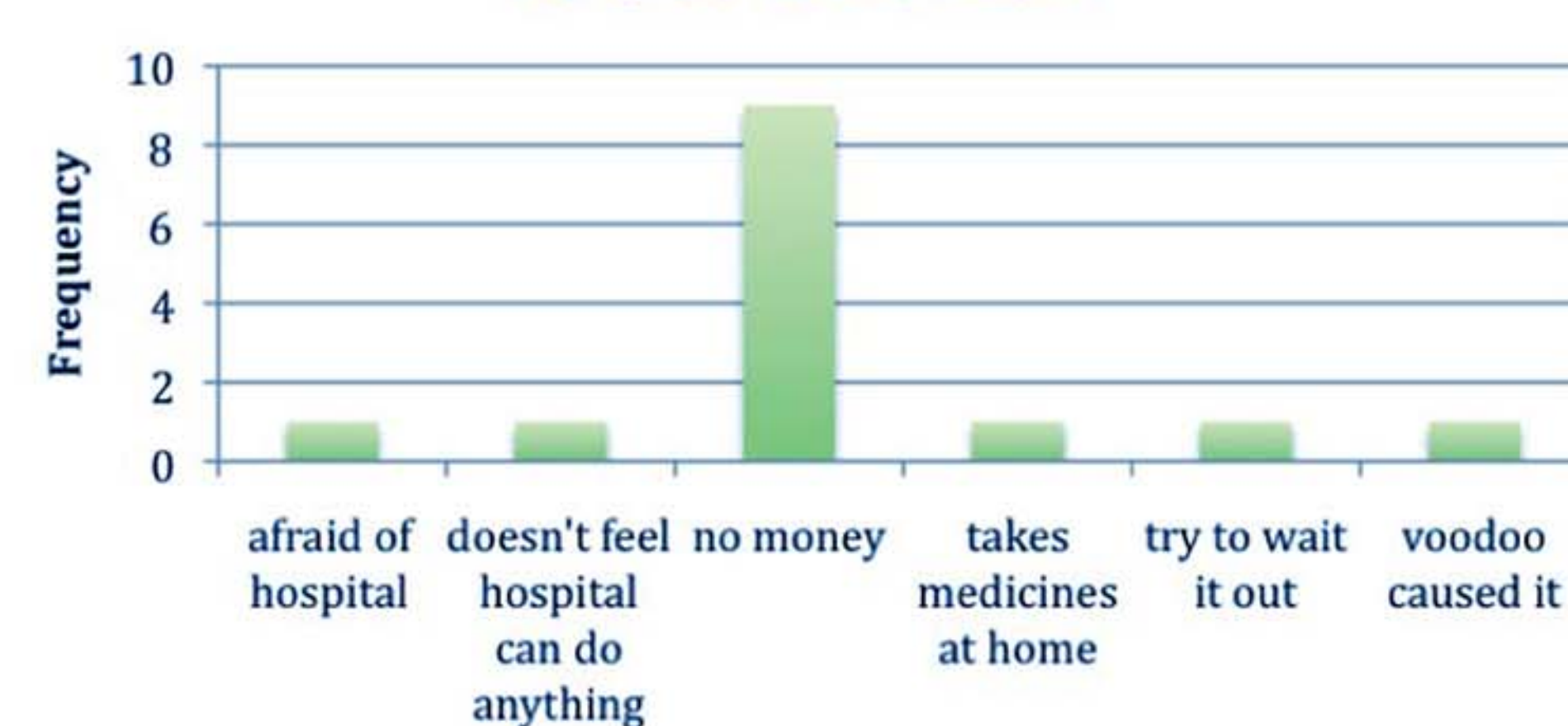


TOP 7 DIAGNOSES AT FORT LIBERTE HOSPITAL

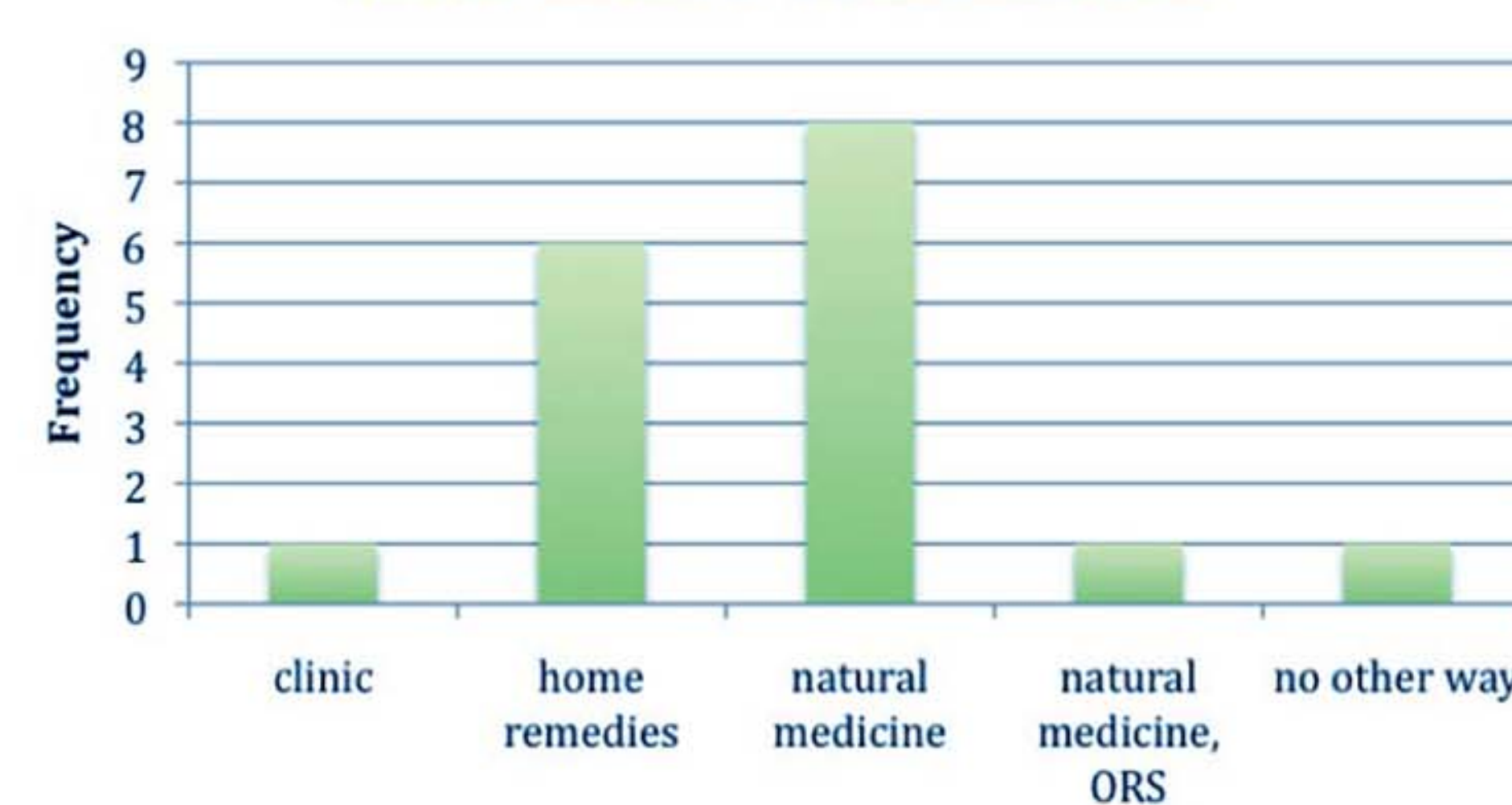
DIAGNOSIS	VISITS	PERCENT
Trauma	290	13%
Abdominal Pain	255	11%
Gastroenteritis	187	8%
Skin and Soft Tissue	164	7%
Hypertension	104	6%
Anemia	87	4%
Typhoid	87	4%

Household Survey

What Prevents You From Going To See a Doctor?



Alternative Treatments



What Do you Do When Ailments Occur?

