

Human amygdala reactivity is diminished by the β -noradrenergic antagonist propranolol

R. Hurlemann^{1,6*}, H. Walter^{1,2}, A. K. Rehme¹, J. Kukolja^{1,6}, S. C. Santoro¹, C. Schmidt¹, K. Schnell^{1,2}, F. Musshoff³, C. Keyzers⁴, W. Maier¹, K. M. Kendrick⁵ and O. A. Onur^{1,6}

¹ Department of Psychiatry and ² Division of Medical Psychology, University of Bonn, Bonn, Germany

³ Institute of Legal Medicine, University of Bonn, Bonn, Germany

⁴ BCN Neuroimaging Center, University Medical Center Groningen, University of Groningen, Groningen, The Netherlands

⁵ Cognitive and Behavioral Neuroscience, The Babraham Institute, Babraham, Cambridge, UK

⁶ Institute of Neuroscience and Medicine, Research Center Juelich, Juelich, Germany

Background. Animal models of anxiety disorders emphasize the crucial role of locus ceruleus–noradrenergic (norepinephrine, NE) signaling, the basolateral amygdala (BLA) and their interactions in the expression of anxiety-like behavioral responses to stress. Despite clinical evidence for the efficacy of a β -noradrenergic receptor blockade with propranolol in the alleviation of anxiety symptoms and the secondary prevention of post traumatic stress disorder, preclinical evidence for a β -noradrenergic modulation of BLA activity in humans is missing.

Method. We combined functional magnetic resonance imaging in healthy volunteers with probabilistic mapping of intra-amygdalar responses to fearful, neutral and happy facial expressions to test the hypothesis that a β -noradrenergic receptor blockade with propranolol would inactivate the BLA.

Results. Consistent with our *a priori* hypothesis, propranolol diminished BLA responses to facial expressions, independent of their emotional valence. The absence of activity changes in probabilistically defined visual control regions underscores the specific action of propranolol in the BLA.

Conclusions. Our findings provide the missing link between the anxiolytic potential of propranolol and the biological basis of β -noradrenergic activation in the human BLA as a key target for the pharmacological inhibition of anxiety neurocircuitry. Moreover, our findings add to emerging evidence that NE modulates both the reactivity (sensitivity) and the operating characteristics (specificity) of the BLA via β -noradrenergic receptors.

Received 22 June 2009; Revised 4 December 2009; Accepted 9 December 2009

Key words: Amygdala, anxiety, basolateral amygdala, face, fear, fMRI, noradrenaline, propranolol.

Introduction

National surveys suggest that up to 20% of the US adult population fulfil the DSM-IV-TR diagnostic criteria for one or more anxiety disorders in a 12-month period (Kessler *et al.* 2005). Current neurobiological models of anxiety disorders are amygdalocentric in form, with recent accounts incorporating a preponderance of bottom-up excitatory over top-down inhibitory influences on amygdala responses to stressful stimuli (Quirk & Gehlert, 2003; Amat *et al.* 2005). Indeed, one of the most replicated findings in functional magnetic resonance imaging (fMRI) studies of patients with anxiety disorders is amygdala hyperactivation to stressful stimuli (Etkin & Wager, 2007)

and fMRI studies in healthy volunteers suggest that the hitherto most efficacious anxiolytic compounds act by reducing amygdala reactivity (Paulus *et al.* 2005; Arce *et al.* 2008; Murphy *et al.* 2009). Also heavily researched for its role in stress and anxiety disorders is the locus ceruleus (LC), a cluster of neurons within the dorsorostral pons, which provides the major source of central noradrenaline (norepinephrine, NE) (Redmond *et al.* 1976; Abercrombie & Jacobs, 1987; Bremner *et al.* 1996a, b; Sved *et al.* 2002; Itoi, 2008). The basolateral complex of the amygdala (BLA), comprising the lateral (LA) and basal (BA) nuclei, receives dense NE innervation from the LC (Asan, 1998). NE levels increase in the BLA in response to stressful stimuli (Galvez *et al.* 1996; Hatfield *et al.* 1999); the BLA, in turn, modulates LC-NE signaling via reciprocal projections (van Bockstaele *et al.* 2001). Thus, the BLA and LC appear to synergistically interact in promoting the NE response to stressful stimuli, which implicates the disinhibition of both in the pathology of

* Address for correspondence: Dr R. Hurlemann, Department of Psychiatry, University of Bonn, Sigmund-Freud-Str. 25, 53105 Bonn, Germany.

(Email: renehurlemann@me.com)

anxiety disorders. There is indeed converging clinical evidence for a crucial role of LC-NE overdrive as an important substrate of – and thereby obvious pharmacological target for – anxiety disorders, particularly panic disorder (Redmond *et al.* 1976; Charney *et al.* 1990; Bremner *et al.* 1996b) and post traumatic stress disorder (PTSD) (Southwick *et al.* 1993, 1997). Consequently, one promising therapeutic strategy is to block LC-NE signaling via postsynaptic β -noradrenergic receptors with propranolol, which appears to be effective for the relief of anxiety symptoms (Granville-Grossman & Turner, 1966; Bonn & Turner, 1971; Stone *et al.* 1973; Hayes & Schulz, 1987) as well as the secondary prevention of PTSD (Pitman *et al.* 2002; Vaiva *et al.* 2003). Whereas animal studies suggest that propranolol might exert its anxiolytic effects by blocking LC-NE input to the BLA (Buffalari & Grace, 2007), there is still a paucity of information on how propranolol affects BLA activity in humans. In the present study, we thus combined fMRI in healthy volunteers with probabilistic mapping of intra-amygdalar responses to facial expressions (Amunts *et al.* 2005; Eickhoff *et al.* 2005, 2006, 2007) to test the hypothesis that a β -noradrenergic receptor blockade with propranolol would specifically diminish BLA activation. Support for this hypothesis would provide an important link between the anxiolytic potential of propranolol and the biological basis of β -noradrenergic activation in the BLA as a key target for the pharmacological control of anxiety neurocircuitry.

Methods and materials

Subjects

A total of 18 healthy right-handed adults (nine females, nine males; mean age 23 years; age range 19–31 years) volunteered after giving written, informed consent. The study had full ethical approval and was carried out in compliance with the latest revision of the Declaration of Helsinki. Subjects were screened for MRI compatibility and determined to be free of current or past medical (including respiratory or allergic illness), neurological or psychiatric disorders (including nicotine, drug or alcohol abuse) by medical history and diagnoses according to the Structured Clinical Interview for DSM-IV-TR (APA, 2000). Volunteers were naive to prescription-strength psychoactive medication (including propranolol for treatment of ‘exam nerves’) (Brewer, 1972) and had not taken over-the-counter psychoactive medication in the past 4 weeks. Neuropsychological screening included the Mehrfachwahl-Wortschatz-Intelligenztest (Lehrl, 1995) to estimate verbal IQ based on lexical

decisions, the Rey Auditory Verbal Learning Test; (RAVLT) Rey, 1941; German adaptation by Helmstaedter *et al.* (2001) to assess verbal learning and memory and the Trail Making Test (TMT; Raitan, 1958) to examine motor speed and visual attention. Facial emotion recognition was assessed with the Facial Expressions of Emotions: Stimuli and Test (FEEST; Young *et al.* 2002). Volunteers had a mean verbal IQ of 118 ± 11 and showed average to above-average performance in the RAVLT, TMT and FEEST (data not shown). They were instructed to maintain their regular bedtimes and wake times throughout the study period and to abstain from caffeine and alcohol intake on the day before an fMRI scan.

Study design

The rationale of the present study was to measure the effects of the non-specific β -noradrenergic antagonist propranolol with a face perception fMRI paradigm in healthy volunteers, in a within-subject, double-blind, placebo-controlled design (see also Paulus *et al.* 2005; Arce *et al.* 2008; Onur *et al.* 2009). Subjects were scanned at identical times in two separate sessions, at least 1 week apart. According to the scan protocol, four subjects were completed in 60-min intervals, starting at 10:00 hours and finishing at 14:00 hours; until they were scanned, subjects were placed in a quiet room with reading materials. In view of the pharmacokinetics of propranolol (time to peak plasma concentration, 1–2 h; elimination half-life, 3–4 h), subjects received one pill containing either verum or a lactose placebo 1.5 h before the fMRI scans. We administered a 40-mg single oral dose of propranolol in analogy to fMRI studies, where this dose was found to alter neural responses to verbal stimuli (Strange & Dolan, 2004, 2007). The order of verum/placebo administration was completely counterbalanced across subjects. Blood pressure (BP) was measured at verum/placebo administration and plasma samples and BP were taken immediately before a fMRI session. Consistent with our previous studies, propranolol produced trend-to-significant decreases in systolic and diastolic BP (Hurlemann *et al.* 2005). After oral administration, propranolol is a lipophilic alkaline compound that is almost completely absorbed. Approximately 60–70% of the drug is metabolized during its first pass through the liver and 30–40% is bioavailable. Inter-individual variation in the degree of first-pass metabolism contributes to the differences in propranolol plasma levels after oral administration of equivalent doses (Wood *et al.* 1978). Consequently, we determined individual propranolol plasma levels in each subject by high-performance liquid chromatography (for a detailed synopsis of analytical

procedures, see Hurlmann *et al.* 2005); the resulting plasma levels were as follows: mean = 39.2 $\mu\text{g}/\text{l}$; S.E.M. = 8.53 $\mu\text{g}/\text{l}$.

FMRI paradigm

The fMRI paradigm consisted of a pseudorandom series of movies obtained from 10 professional actors (five females, five males), who in each clip displayed a fearful, neutral or happy facial expression in a standardized fashion (for emotion ratings by independent judges, see van der Gaag *et al.* 2007; for online exemplification of movies, see Kukolja *et al.* 2008). In previous fMRI studies, these stimuli evoked unbiased, i.e. equally robust, amygdala responses (van der Gaag *et al.* 2007), making them an ideal imaging probe to assess the potential qualitative and/or quantitative changes in amygdala responsivity associated with pharmacological manipulations (Kukolja *et al.* 2008; Onur *et al.* 2009). Moreover, we used dynamic instead of static stimuli for higher ecological validity; in everyday life, during social interactions, genuine dynamic and not static facial displays serve as the primary conveyors of social-emotional information (Hurlmann *et al.* 2008; see also Hasson *et al.* 2004; Reinders *et al.* 2006). We thereby adapted an approach also used in recent single-neuron recording studies of the primate amygdala; this approach accounts for the fact that primates never see static facial displays in their natural habitat (Kuraoka & Nakamura, 2007). Each movie had a duration of 3 s and was repeated twice, resulting in 30 stimulus presentations per condition. Movies occurred at a rate of one every 13.2 s (7.8–18.6 s) over a period of approximately 20 min. A fixation cross was interspersed between each movie. During fMRI scanning, subjects were engaged in a gender judgment task requiring appropriate push-button responses. Stimulus delivery and behavioral response recording was carried out using Presentation12 (Neurobehavioral Systems Inc., USA).

FMRI acquisition

An Avanto MRI system (Siemens, Germany) operating at 1.5T and the parallel acquisition technique 'generalized autocalibrating partially parallel acquisitions' were used to obtain T2*-weighted echoplanar (EPI) images with blood-oxygen-level-dependent (BOLD) contrast (TR, 2.70 s; TE, 40 ms; matrix size, 64 \times 64; pixel size, 3 \times 3 mm²; slice thickness, 1.8 mm; distance factor, 50%; FOV, 192 mm; flip angle, 88°; 39 axial slices). Based on our *a priori* hypothesis the 39 slices were oriented centrally to the amygdala. A total of 550 volumes were acquired; the first five volumes were discarded to allow for T1 equilibration effects. Stimuli

were presented with liquid crystal display video goggles. In addition, high-resolution anatomical magnetic resonance images were acquired (T1-weighted 3D MPRAGE) to exclude potential T1-sensitive brain abnormalities.

FMRI data analysis

The image pre-processing was performed using Matlab7 (The MathWorks Inc., USA) and Statistical Parametric Mapping version 5 (SPM5) (<http://www.fil.ion.ucl.ac.uk/spm>). The EPI images were corrected for head movement between scans by an affine registration (Ashburner & Friston, 2003) involving a two-pass procedure, by which images were initially realigned to the first image of the time series and subsequently realigned to the mean of all images after the first step. After completing the realignment, the mean EPI image for each subject was computed and spatially normalized to the Montreal Neurological Institute (MNI) template (Evans *et al.* 1992; Collins *et al.* 1994; Holmes *et al.* 1998) using the 'unified segmentation' function in SPM5 enabling the match of tissue classes of every subject with tissue probability maps in MNI space (Ashburner & Friston, 2005). Briefly, this algorithm is based on a probabilistic framework that enables the combination of image registration, tissue classification and bias correction within the same generative model. The resulting parameters of a discrete cosine transform, which define the deformation field necessary to move the subjects' data into the space of the MNI tissue probability maps (Evans *et al.* 1994), were then combined with the deformation field transforming between the latter and the MNI single subject template. The ensuing deformation was subsequently applied to the individual EPI volumes. All images were hereby transformed into standard stereotaxic space and re-sampled at 2 \times 2 \times 2 mm voxel size. The normalized images were spatially smoothed using an 8-mm FWHM Gaussian kernel. Methodological studies suggest no benefit from smaller smoothing kernels, when probabilistic mapping of intra-amygdalar responses is intended (Hurlmann *et al.* 2008).

The three conditions (fearful, neutral and happy) were modeled by means of reference waveforms, which correspond to stick functions placed at the onset of the stimuli convolved with a hemodynamic response function (Friston *et al.* 1995). A design matrix comprising contrasts of alternating intervals of the different trials, the time derivative and movement parameters were created. Specific effects were assessed by applying appropriate linear contrasts to the parameter estimates of the experimental trials, resulting in *t* statistics for each voxel. These formed

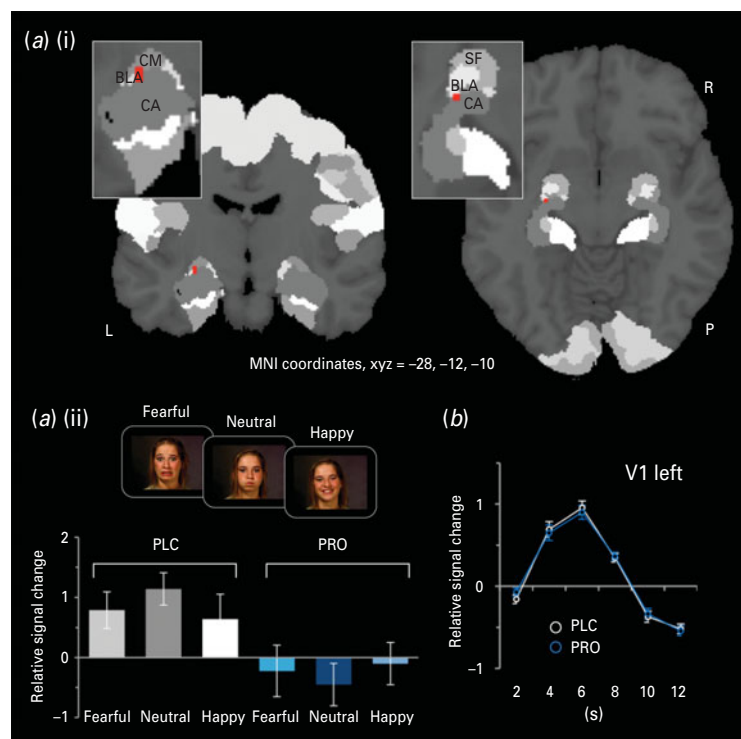


Fig. 1. (a) Activation map resulting from the placebo-minus-propranolol contrast (calculated across fearful, neutral and happy conditions) in a probabilistic region of interest (ROI) analysis of the amygdala; (i) propranolol inactivated the left basolateral amygdala (BLA) (Montreal Neurological Institute coordinates $x, y, z = -28, -12, -10$, respectively); (ii) plotted are the relative signal changes in the blood-oxygen-level dependent (BOLD) response of the activated voxels for each of the two treatment sessions (placebo, propranolol) and the three conditions. A β -noradrenergic receptor blockade with propranolol abolished left BLA responses; (b) relative signal changes in the BOLD response of activated clusters within the primary visual cortex (visual area V1). Amplitudes and latencies of minima and maxima of the V1 hemodynamic response profile were not affected by propranolol, which argues against a global homogeneous drug effect on the BOLD signal. Error bars indicate s.e.m. CA, cornu ammonis; CM, centromedial amygdala; L, left hemisphere; P, posterior; PLC, placebo; PRO, propranolol; R, right hemisphere; SF, superficial amygdala.

statistical parametric maps [SPM(T)] of differences between the three conditions. SPM(T)-statistics were interpreted in light of the theory of probabilistic behavior of Gaussian random fields. Propranolol-induced effects on neural activations across fearful, neutral and happy conditions were assessed by a second-level analysis constituting a random effects model. For each simple effect in any of the two treatment sessions, individual contrast images of each subject were entered into a second-level analysis based on a repeated measures analysis of variance (ANOVA). For illustration purposes (Fig. 1a) we extracted the relative parameter estimates for each simple effect. To assess a potential propranolol plasma level-response relationship, the individual contrast images were entered into another second-level analysis using a multiple regression model with propranolol plasma levels as covariate. For a hypothesis-driven analysis, the left and right amygdalae – including their laterobasal (Fig. 2), centromedial and superficial subregions – and the primary visual cortex

(V1) as extra-amygdalar control region with high availability of β -noradrenergic receptors (Rainbow *et al.*, 1984) – were defined as regions of interest (ROI) using the SPM anatomy toolbox v1.5 (http://www.fz-juelich.de/inm/spm_anatomy_toolbox) based on cytoarchitectonic probability maps (AllAreas_v15_MPM.mat) derived from histological analysis of 10 human post-mortem brains (Amunts *et al.* 2005; Eickhoff *et al.* 2005, 2006, 2007; see also Hurlemann *et al.* 2008; Onur *et al.* 2009). Within each amygdala ROI, we applied corrections for multiple comparisons based on family-wise error (FWE). The feasibility of this probabilistic ROI approach has been confirmed by our previous work (Hurlemann *et al.* 2008; Kukulja *et al.* 2008; Onur *et al.* 2009).

Results

To assess potential behavioral effects of propranolol on response accuracy and reaction times, comparisons were made between the propranolol and placebo

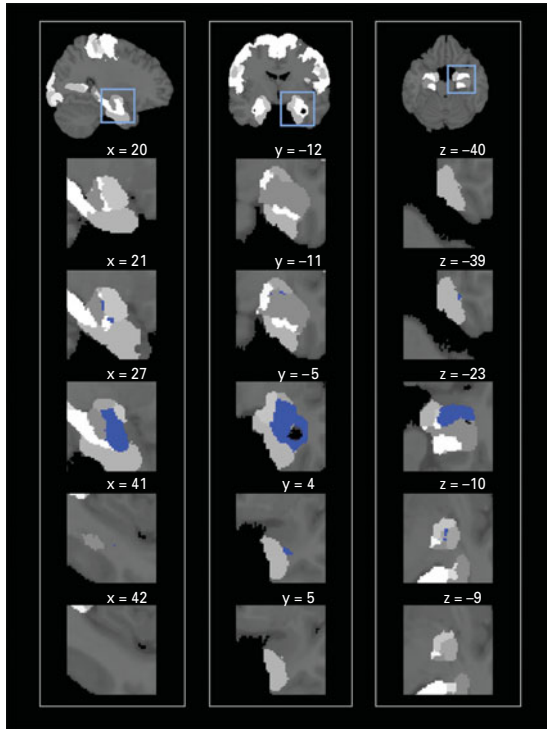


Fig. 2. Presented are sections through the cytoarchitectonic probability map of the laterobasal subregion of the amygdala (blue) in anatomical Montreal Neurological Institute space (x, y, z coordinates indicate distances (mm) from the anterior commissure in the mediolateral, rostrocaudal and dorsoventral directions, respectively) (Amunts *et al.* 2005; Eickhoff *et al.* 2005, 2006, 2007). Column 1 (sagittal sections) lists the x coordinates, column 2 (coronal sections) the y coordinates and column 3 (horizontal sections) the z coordinates of the smallest (borders) and largest areas covered by the map.

treatment session. However, separate condition (fearful, neutral and happy) \times treatment session (propranolol, placebo) repeated measures ANOVA yielded neither main nor interaction effects on the behavioral indices (all p values >0.05). We measured an overall reaction time of 1.33 ± 0.54 s and an overall response accuracy of $>95\%$. Driven by our *a priori* hypothesis, the fMRI analysis was based on probabilistically defined ROI within the left and right amygdalae. Relative to placebo, propranolol attenuated left amygdala responses across the three conditions (MNI coordinates $x, y, z = -28, -12, -10$, respectively, $p < 0.001$, uncorrected; $p < 0.05$, FWE-corrected; probability, 70%). Among the amygdala subregions, the left BLA, specifically its posterior portion bordering the amygdala-hippocampal junction was identified as the most likely candidate site for the action of propranolol (Figs 1a and 2). A subsequent analysis revealed no significant association

between higher propranolol plasma levels and lower BLA responsivity (MNI coordinates $x, y, z = -32, 02, 020$, respectively $p = 0.003$, uncorrected; $p = 0.27$, FWE-corrected). Given the potential influence of a β -noradrenergic receptor blockade with propranolol on cerebral hemodynamics, one important consideration is the differentiation between regional drug effects on neural activity or global drug effects on the BOLD signal *per se*. To exclude the latter, we analyzed the relative signal change profile in the primary visual cortex (visual area V1). Specifically, we determined the relative signal change throughout stimulus onset to the end of the hemodynamic response function (for a similar approach see Paulus *et al.* 2005; Onur *et al.* 2009). This analysis demonstrated that propranolol affected neither the amplitudes nor the latencies of minima and maxima of the V1 hemodynamic response. A comparison of standard deviations did not reveal any significant differences either (Fig. 1b). This analysis was complemented by an additional probabilistic ROI analysis of V1, such that V1 neural responses to faces underwent the same FWE-corrected probabilistic ROI analysis as did BLA neural responses to faces. Again, no significant influence of propranolol was found in the control region. Together, these results suggest that propranolol may act by modulating a face-responsive neural circuitry rather than by globally altering the BOLD signal *per se*. To identify further face-responsive regions showing altered activation under propranolol treatment, we extended our analysis to the whole brain; however, correction for multiple comparisons yielded no supra-threshold activations in any contrast.

Discussion

In accord with our *a priori* hypothesis, the present study shows that a 40-mg single oral dose of propranolol reduces human BLA responses to fearful, neutral and happy facial expressions. The absence of activity changes in the probabilistically defined V1 control region underscores the specific action of propranolol in the BLA. Our results are consistent with quantitative autoradiography studies in the rat brain, which identified the BLA as the amygdala subregion with the highest availability of β -noradrenergic receptors (Rainbow *et al.* 1984). Thus, the present study translates evidence for an interventional significance of a β -noradrenergic receptor blockade with propranolol as a 'switch-off' of the BLA from rats (Buffalari & Grace, 2007) to humans.

Using an analogous fMRI study design, we recently modeled a stress-induced BLA response bias towards fearful faces by potentiating NE signaling with a 4-mg single oral dose of the NE transporter antagonist

reboxetine (Onur *et al.* 2009). It thus appears from our series of studies that NE modulates both the reactivity (sensitivity) and the operating characteristics (specificity) of the BLA. Under propranolol conditions and reduced NE input, the BLA is inactive, whereas it is active under placebo conditions and moderate NE input, and hyperactive under reboxetine conditions and elevated NE input. Together, these data converge on NE as a key modulator of BLA response sensitivity. In addition, BLA response specificity appears to vary as a function of NE in that reboxetine-induced elevation of NE increased BLA responses to fearful faces but decreased BLA responses to neutral faces (Onur *et al.* 2009), perhaps by preferentially augmenting the signal:noise ratio for fearful faces at the cost of neutral faces (see also Woodward *et al.* 1991; Berridge & Waterhouse, 2003; Aston-Jones & Cohen, 2005) and thus converting the BLA into a 'fear module'. Based on our findings, we suggest that elevations of NE evoked by stressful stimuli elicit a shift in BLA responsiveness towards these stimuli. One scenario would be that those BLA neurons that are activated by elevations of NE project to downstream BLA target areas to promote stress-related plasticity in these target areas (Morilak *et al.* 2005; Buffalari & Grace, 2007).

Key among the BLA projection areas is the hippocampus (Young *et al.* 1994; Pitkanen *et al.* 2000), which orchestrates declarative memory formation (Scoville & Milner, 1957). Evidence from behavioral and fMRI studies in healthy volunteers indicates that pretreatment with a 40-mg or 80-mg single oral dose of propranolol abolishes an amygdala-dependent enhancement of hippocampal plasticity during declarative memory encoding (Strange *et al.* 2003; Strange & Dolan, 2004; Hurlmann *et al.* 2005; van Stegeren *et al.* 2005, 2008) and consolidation (Cahill *et al.* 1994; van Stegeren *et al.* 1998) of stressful stimuli. Propranolol infusions into the rat BLA impair dentate gyrus long-term potentiation (Ikegaya *et al.* 1997) as well as (re)consolidation of fear inhibitory avoidance (Liang *et al.* 1986) and spatial maze learning (Hatfield & McGaugh, 1999; Przybyslawski *et al.* 1999), whereas intra-LA infused propranolol disrupts reconsolidation but not consolidation of conditioned fear (Debiec & LeDoux, 2004). Consistent with these findings, propranolol has been reported to erase conditioned fear responses in rats (Rodriguez-Romaguera *et al.* 2009) and humans (Kindt *et al.* 2009). Together, these studies provide intriguing translational evidence for a key role of β -noradrenergic activation in the BLA in mediating the influence of stress on declarative and non-declarative memory formation. Consequently, current conceptually driven approaches concerning the use of propranolol for the secondary prevention

of PTSD (Pitman *et al.* 2002; Vaiva *et al.* 2003) emphasize its efficacy as an antagonist of exuberant LC-NE input to the BLA under conditions of traumatic stress, serving to forestall over-learning and over-(re)consolidation of declarative (Hurlmann, 2008) and non-declarative memories (Debiec & LeDoux, 2006; Kindt *et al.* 2009; Rodriguez-Romaguera *et al.* 2009) of emotional trauma.

The present study extends evidence of a β -noradrenergic inhibition of BLA responses during stress-memory interactions to the perceptual domain. Our observation that propranolol globally decreased BLA responses to faces independent of their emotional valence may be indicative of a broader role of β -noradrenergic activation of the amygdala in the perception of facial motion beyond the extraction of emotion. This underscores the view that the amygdala is tuned to respond to dynamic social-environmental changes (Labar *et al.* 2003; Adolphs & Spezio, 2006; Fitzgerald *et al.* 2006; van der Gaag *et al.* 2007). Reduced amygdala responses to (static) facial expressions have also been reported for the anxiolytics lorazepam, which enhances γ -aminobutyric acid (GABA) signaling via the benzodiazepine-GABAA receptor (Paulus *et al.* 2005), and escitalpram, which potentiates 5-HT (serotonin) signaling by blocking 5-HT reuptake via the 5-HT transporter (Arce *et al.* 2008). It thus appears from these studies that independent of whether dynamic or static face stimuli are used to evoke amygdala activation, inhibition of this activation is the basic principle of anxiolytic drug action.

In contrast to 5-HT re-uptake inhibitors, benzodiazepine derivatives have the advantage of rapid onset of anxiolytic action; however, their chronic administration is limited by sedation, tolerance and dependence. Propranolol has traditionally been used by psychiatrists to treat performance anxiety (particularly stage fright in musicians) (Brantigan *et al.* 1982; Tyrer 1988), test anxiety (Faigel, 1991), anxiety in dental phobic patients (Liu *et al.* 1991) and avoidance behavior in panic disorder patients (Ravaris *et al.* 1991). Other studies, however, failed to find robust effects of propranolol on subjective anxiety in phobic subjects (Fagerstrom *et al.* 1985) or expression of cued fear conditioning in healthy volunteers (Grillon *et al.* 2004). The observation that propranolol improved cognitive ability under stressful conditions (Faigel, 1991; Alexander *et al.* 2007) suggests potential use of the drug as an adjunct to exposure-based cognitive-behavioral therapy (CBT) for anxiety disorders. Specifically, diminishing excessive stress during repeated exposure with propranolol could reduce drop-out rates in CBT (Rodriguez-Romaguera *et al.* 2009). Considering evidence-based medicine criteria,

propranolol is indicated to treat lithium-induced tremor, antipsychotic-induced akathisia/tardive dyskinesia, withdrawal syndromes and (auto)aggressive behavior with temper outbursts (Kornischka *et al.* 2007).

Limitations

In the present study, we combined conventional fMRI with cytoarchitectonic probability maps to make an initial attempt at subdivision-level investigation of the effects of propranolol on the human amygdala. One limitation is the relatively low field strength of the MRI system (1.5T), which complicates the probabilistic assignment of activation sites to histologically defined amygdala subregions. To account for the fact that the centers of these subregions are <1 cm apart, we chose a rather narrow slice thickness of 1.8 mm (pixel size, 3 × 3 mm²). Nevertheless, the accuracy of subdivision-level investigation of drug effects on amygdala function could be further refined by employing MRI systems with field strengths of 3T or higher and a slice thickness of 1 mm or less. Moreover, future investigations might adopt resting state BOLD or arterial spin labelling techniques to better differentiate between local and global effects of propranolol treatment.

Conclusion

The present study provides the missing link between the anxiolytic potential of propranolol and the biological basis of β -noradrenergic receptor activation in the BLA as a key target for the pharmacological control of anxiety neurocircuitry. In combination with our previous study (Onur *et al.* 2009), the present study suggests a key role of NE in modulating both the reactivity (sensitivity) and the operating characteristics (specificity) of the BLA via β -noradrenergic receptors.

Acknowledgements

This work was supported by a German Federal Ministry of Education and Research grant (01GW0671) (to R.H.), a German Research Foundation grant (HU1302/2-1) (to R.H.), a Starting Independent Researcher Grant jointly provided by the Ministry of Innovation, Science, Research and Technology of the State of North Rhine-Westphalia and the University of Bonn (to R.H.), an NWO Vidi grant (to C.K.) and a European Commission Marie Curie Excellence grant (to C.K.). The authors thank G.R. Fink for providing resources and expertise, and A. Patin for reading the manuscript.

Declaration of Interest

None.

References

- Abercrombie ED, Jacobs BL** (1987). Single-unit response of noradrenergic neurons in the locus coeruleus of freely moving cats. I. Acutely presented stressful and nonstressful stimuli. *Journal of Neuroscience* **7**, 2837–2843.
- Adolphs R, Spezio M** (2006). Role of the amygdala in processing visual social stimuli. *Progress in Brain Research* **156**, 363–378.
- Alexander JK, Hillier A, Smith RM, Tivarus ME, Beversdorf DQ** (2007). Beta-adrenergic modulation of cognitive flexibility during stress. *Journal of Cognitive Neuroscience* **19**, 468–478.
- Amat J, Baratta MV, Paul E, Bland ST, Watkins LR, Maier SF** (2005). Medial prefrontal cortex determines how stressor controllability affects behavior and dorsal raphe nucleus. *Nature Neuroscience* **8**, 365–371.
- Amunts K, Kedo O, Kindler M, Pieperhoff P, Mohlberg H, Shah NJ, Habel U, Schneider S, Zilles K** (2005). Cytoarchitectonic mapping of the human amygdala, hippocampal region and entorhinal cortex: intersubject variability and probability maps. *Anatomy and Embryology (Berlin)* **210**, 343–352.
- APA** (2000). *Diagnostic and Statistical Manual of Mental Disorders* (4th edn, text revision). American Psychiatric Association: Washington, DC.
- Arce E, Simmons AN, Lovero KL, Stein MB, Paulus MP** (2008). Escitalopram effects on insula and amygdala BOLD activation during emotional processing. *Psychopharmacology (Berlin)* **196**, 661–672.
- Asan E** (1998). The catecholaminergic innervation of the rat amygdala. *Advances in Anatomy, Embryology and Cell Biology* **142**, L1–L118.
- Ashburner J, Friston KJ** (2003). Rigid body registration. In *Human Brain Function*, 2nd edn. (ed. R. S. Frackowiak, K. J. Friston, C. D. Frith, R. J. Dolan, C. J. Price, J. Ashburner, W. D. Penny, S. Zeki), pp. 635–655. Academic Press: London, UK.
- Ashburner J, Friston KJ** (2005). Unified segmentation. *Neuroimage* **26**, 839–851.
- Aston-Jones G, Cohen JD** (2005). An integrative theory of locus coeruleus-norepinephrine function: adaptive gain and optimal performance. *Annual Review – Neuroscience* **28**, 403–540.
- Berridge CW, Waterhouse BD** (2003). The locus coeruleus–noradrenergic system: modulation of behavioral state and state-dependent cognitive processes. *Brain Research. Brain Research Reviews* **42**, 33–84.
- Bonn JA, Turner P** (1971). D-Propranolol and anxiety. *Lancet* **1**, 1355–1356.
- Brantigan CO, Brantigan TA, Joseph N** (1982). Effect of beta-blockade and beta-stimulation on stage fright. *American Journal of Medicine* **72**, 88–94.
- Bremner JD, Krystal JH, Southwick SM, Charney DS** (1996a). Noradrenergic mechanisms in stress and anxiety: I. Preclinical studies. *Synapse* **23**, 28–38.

- Bremner JD, Krystal JH, Southwick SM, Charney DS** (1996b). Noradrenergic mechanisms in stress and anxiety: II. Clinical studies. *Synapse* **23**, 39–51.
- Brewer C** (1972). Beneficial effect of beta-adrenergic blockade on 'exam nerves'. *Lancet* **2**, 435.
- Buffalari DM, Grace AA** (2007). Noradrenergic modulation of basolateral amygdala neuronal activity: opposing influences of alpha-2 and beta receptor activation. *Journal of Neuroscience* **27**, 12358–12366.
- Caill L, Prins B, Weber M, McGaugh JL** (1994). Beta-adrenergic activation and memory for emotional events. *Nature* **371**, 702–704.
- Charney DS, Woods SW, Nagy LM, Southwick SM, Krystal JH, Heninger GR** (1990). Noradrenergic function in panic disorder. *Journal of Clinical Psychiatry* **51** (Suppl. A), 5–11.
- Collins DL, Neelin P, Peters TM, Evans AC** (1994). Automatic 3D intersubject registration of MR volumetric data in standardized Talairach space. *Journal of Computer Assisted Tomography* **18**, 192–205.
- Debiec J, Ledoux JE** (2004). Disruption of reconsolidation but not consolidation of auditory fear conditioning by noradrenergic blockade in the amygdala. *Neuroscience* **129**, 267–272.
- Debiec J, LeDoux JE** (2006). Noradrenergic signaling in the amygdala contributes to the reconsolidation of fear memory: treatment implications for PTSD. *Annals of the New York Academy of Sciences* **1071**, 521–524.
- Eickhoff SB, Heim S, Zilles K, Amunts K** (2006). Testing anatomically specified hypotheses in functional imaging using cytoarchitectonic maps. *Neuroimage* **32**, 570–582.
- Eickhoff SB, Paus T, Caspers S, Grosbras MH, Evans A, Zilles K, Amunts K** (2007). Assignment of functional activations to probabilistic cytoarchitectonic areas revisited. *Neuroimage* **36**, 511–521.
- Eickhoff SB, Stephan KE, Mohlberg H, Grefkes C, Fink GR, Amunts K, Zilles K** (2005). A new SPM toolbox for combining probabilistic cytoarchitectonic maps and functional imaging data. *Neuroimage* **25**, 1325–1335.
- Etkin A, Wager TD** (2007). Functional neuroimaging of anxiety: a meta-analysis of emotional processing in PTSD, social anxiety disorder, and specific phobia. *American Journal of Psychiatry* **164**, 1476–1488.
- Evans AC, Kamber M, Collins DL, MacDonald D** (1994). An MRI based probabilistic atlas of neuroanatomy. In *Magnetic Resonance Scanning and Epilepsy* (ed. S. Shorvon, D. Fish, F. Andermann, G. M. Bydder), pp. 263–274. Plenum Press: New York.
- Evans AC, Marrett S, Neelin P, Collins L, Worsley K, Dai W, Milot S, Meyer E, Bub D** (1992). Anatomical mapping of functional activation in stereotactic coordinate space. *Neuroimage* **1**, 43–53.
- Fagerstrom KO, Hugdahl K, Lundstrom N** (1985). Effect of beta-receptor blockade on anxiety with reference to the three-systems model of phobic behavior. *Neuropsychobiology* **13**, 187–193.
- Faigel HC** (1991). The effect of beta blockade on stress-induced cognitive dysfunction in adolescents. *Clinical Pediatrics* **30**, 441–445.
- Fitzgerald DA, Angstadt M, Jelsone LM, Nathan PJ, Phan KL** (2006). Beyond threat: amygdala reactivity across multiple expressions of facial affect. *Neuroimage* **30**, 1441–1448.
- Friston KJ, Holmes A, Worsley KJ, Poline JB, Frith CD, Frackowiak RSJ** (1995). Statistical parametric maps in functional imaging: a general linear approach. *Human Brain Mapping* **2**, 189–210.
- Galvez R, Mesches MH, McGaugh JL** (1996). Norepinephrine release in the amygdala in response to footshock stimulation. *Neurobiology of Learning and Memory* **66**, 253–257.
- Granville-Grossman KL, Turner P** (1966). The effect of propranolol on anxiety. *Lancet* **1**, 788–790.
- Grillon C, Cordova J, Morgan CA, Charney DS, Davis M** (2004). Effects of the beta-blocker propranolol on cued and contextual fear conditioning in humans. *Psychopharmacology (Berlin)* **175**, 342–352.
- Hasson U, Nir Y, Levy I, Fuhrmann G, Malach R** (2004). Intersubject synchronization of cortical activity during natural vision. *Science* **303**, 1634–1640.
- Hatfield T, McGaugh JL** (1999). Norepinephrine infused into the basolateral amygdala posttraining enhances retention in a spatial water maze task. *Neurobiology of Learning and Memory* **71**, 232–239.
- Hatfield T, Spanis C, McGaugh JL** (1999). Response of amygdalar norepinephrine to footshock and GABAergic drugs using in vivo microdialysis and HPLC. *Brain Research* **835**, 340–345.
- Hayes PE, Schulz SC** (1987). Beta-blockers in anxiety disorders. *Journal of Affective Disorders* **13**, 119–130.
- Helmstaedter C, Lendt M, Lux S** (2001). *Verbaler Lern- und Merkfähigkeitstest (VLMT)*. Hogrefe: Göttingen.
- Holmes CJ, Hoge R, Collins L, Woods R, Toga AW, Evans AC** (1998). Enhancement of MR images using registration for signal averaging. *Journal of Computer Assisted Tomography* **22**, 324–333.
- Hurlmann R** (2008). Noradrenergic-glucocorticoid mechanisms in emotion-induced amnesia: from adaptation to disease. *Psychopharmacology (Berlin)* **197**, 13–23.
- Hurlmann R, Hawellek B, Matusch A, Kolsch H, Wollersen H, Madea B, Vogeley K, Maier W, Dolan RJ** (2005). Noradrenergic modulation of emotion-induced forgetting and remembering. *Journal of Neuroscience* **25**, 6343–6349.
- Hurlmann R, Rehme AK, Diessel M, Kukulja J, Maier W, Walter H, Cohen MX** (2008). Segregating intra-amygdalar responses to dynamic facial emotion with cytoarchitectonic maximum probability maps. *Journal of Neuroscience Methods* **172**, 13–20.
- Ikegaya Y, Nakanishi K, Saito H, Abe K** (1997). Amygdala beta-noradrenergic influence on hippocampal long-term potentiation in vivo. *Neuroreport* **8**, 3143–3146.
- Itoi K** (2008). Ablation of the central noradrenergic neurons for unraveling their roles in stress and anxiety. *Annals of the New York Academy of Sciences* **1129**, 47–54.
- Kessler RC, Chiu WT, Demler O, Merikangas KR, Walters EE** (2005). Prevalence, severity, and comorbidity of 12-month DSM-IV disorders in the National

- Comorbidity Survey Replication. *Archives of General Psychiatry* **62**, 617–627.
- Kindt M, Soeter M, Vervliet B** (2009). Beyond extinction: erasing human fear responses and preventing the return of fear. *Nature Neuroscience* **12**, 256–258.
- Kornischka J, Cordes J, Agelink MW** (2007). 40 years beta-adrenoceptor blockers in psychiatry. *Fortschritte der Neurologie-Psychiatrie* **75**, 199–210.
- Kukolja J, Schlaepfer TE, Keyzers C, Klingmuller D, Maier W, Fink GR, Hurlmann R** (2008). Modeling a negative response bias in the human amygdala by noradrenergic-glucocorticoid interactions. *Journal of Neuroscience* **28**, 12868–12876.
- Kuraoka K, Nakamura K** (2007). Responses of single neurons in monkey amygdala to facial and vocal emotions. *Journal of Neurophysiology* **97**, 1379–1387.
- LaBar KS, Crupain MJ, Voyvodic JT, McCarthy G** (2003). Dynamic perception of facial affect and identity in the human brain. *Cerebral Cortex* **13**, 1023–1033.
- Lehrl S** (1995). *Mehrfachwahl-Wortschatz-Test (MWT-B)*. Erlangen: Straube.
- Liang KC, Juler RG, McGaugh JL** (1986). Modulating effects of posttraining epinephrine on memory: involvement of the amygdala noradrenergic system. *Brain Research* **368**, 125–133.
- Liu HH, Milgrom P, Fiset L** (1991). Effect of a beta-adrenergic blocking agent on dental anxiety. *Journal of Dental Research* **70**, 1306–1308.
- Morilak DA, Barrera G, Echevarria DJ, Garcia AS, Hernandez A, Ma S, Petre CO** (2005). Role of brain norepinephrine in the behavioral response to stress. *Progress in Neuropsychopharmacology and Biological Psychiatry* **29**, 1214–1224.
- Murphy SE, Norbury R, O'Sullivan U, Cowen PJ, Harmer CJ** (2009). Effect of a single dose of citalopram on amygdala response to emotional faces. *British Journal of Psychiatry* **194**, 535–540.
- Onur OA, Walter H, Schlaepfer TE, Rehme AK, Schmidt C, Keyzers C, Maier W, Hurlmann R** (2009). Noradrenergic enhancement of amygdala responses to fear. *Social Cognitive and Affective Neuroscience* **4**, 119–126.
- Paulus MP, Feinstein JS, Castillo G, Simmons AN, Stein MB** (2005). Dose-dependent decrease of activation in bilateral amygdala and insula by lorazepam during emotion processing. *Archives of General Psychiatry* **62**, 282–288.
- Pitkanen A, Pikkarainen M, Nurminen N, Ylinen A** (2000). Reciprocal connections between the amygdala and the hippocampal formation, perirhinal cortex, and postrhinal cortex in rat. A review. *Annals of the New York Academy of Sciences* **911**, 369–391.
- Pitman RK, Sanders KM, Zusman RM, Healy AR, Cheema F, Lasko NB, Cahill L, Orr SP** (2002). Pilot study of secondary prevention of posttraumatic stress disorder with propranolol. *Biological Psychiatry* **51**, 189–192.
- Przybylski J, Roulet P, Sara SJ** (1999). Attenuation of emotional and nonemotional memories after their reactivation: role of beta adrenergic receptors. *Journal of Neuroscience* **19**, 6623–6628.
- Rainbow TC, Parsons B, Wolfe BB** (1984). Quantitative autoradiography of beta 1- and beta 2-adrenergic receptors in rat brain. *Proceedings of the National Academy of Sciences USA* **81**, 1585–1589.
- Raitan RM** (1958). Validity of the trail making test as an indication of organic brain damage. *Perceptual and Motor Skills* **8**, 271–276.
- Reinders AA, Gläscher J, de Jong JR, Willemsen AT, den Boer JA, Büchel C** (2006). Detecting fearful and neutral faces: BOLD latency differences in amygdala-hippocampal junction. *Neuroimage* **33**, 805–814.
- Quirk GJ, Gehlert DR** (2003). Inhibition of the amygdala: key to pathological states? *Annals of the New York Academy of Sciences* **985**, 263–272.
- Ravaris CL, Friedman MJ, Hauri PJ, McHugo GJ** (1991). A controlled study of alprazolam and propranolol in panic-disordered and agoraphobic outpatients. *Journal of Clinical Psychopharmacology* **11**, 344–350.
- Redmond Jr. DE, Huang YH, Snyder DR, Maas JW** (1976). Behavioral effects of stimulation of the nucleus locus coeruleus in the stump-tailed monkey *Macaca arctoides*. *Brain Research* **116**, 502–510.
- Rey A** (1941). L'examen psychologique dans les cas d'encéphalopathie traumatique. *Archiv fur Psychologie* **30**, 286–340.
- Rodriguez-Romaguera J, Sotres-Bayon F, Mueller D, Quirk GJ** (2009). Systemic propranolol acts centrally to reduce conditioned fear in rats without impairing extinction. *Biological Psychiatry* **65**, 887–892.
- Scoville WB, Milner B** (1957). Loss of recent memory after bilateral hippocampal lesions. *Journal of Neurology, Neurosurgery and Psychiatry* **20**, 11–21.
- Southwick SM, Krystal JH, Bremner JD, Morgan 3rd CA, Nicolaou AL, Nagy LM, Johnson DR, Heninger GR, Charney DS** (1997). Noradrenergic and serotonergic function in posttraumatic stress disorder. *Archives of General Psychiatry* **54**, 749–758.
- Southwick SM, Krystal JH, Morgan CA, Johnson D, Nagy LM, Nicolaou A, Heninger GR, Charney DS** (1993). Abnormal noradrenergic function in posttraumatic stress disorder. *Archives of General Psychiatry* **50**, 266–274.
- Stone WN, Gleser GC, Gottschalk LA** (1973). Anxiety and beta-adrenergic blockade. *Archives of General Psychiatry* **29**, 620–622.
- Strange BA, Dolan RJ** (2004). Beta-adrenergic modulation of emotional memory-evoked human amygdala and hippocampal responses. *Proceedings of the National Academy of Sciences USA* **101**, 11454–11458.
- Strange BA, Dolan RJ** (2007). Beta-adrenergic modulation of oddball responses in humans. *Behavioral and Brain Functions* **3**, 29.
- Strange BA, Hurlmann R, Dolan RJ** (2003). An emotion-induced retrograde amnesia in humans is amygdala- and beta-adrenergic-dependent. *Proceedings of the National Academy of Sciences USA* **100**, 13626–13631.
- Sved AF, Cano G, Passerin AM, Rabin B** (2002). The locus coeruleus, Barrington's nucleus, and neural circuits of stress. *Physiology and Behavior* **77**, 737–742.
- Tyrer P** (1988). Current status of beta-blocking drugs in the treatment of anxiety disorders. *Drugs* **36**, 773–783.

- van Bockstaele EJ, Bajic D, Proudfit H, Valentino RJ** (2001). Topographic architecture of stress-related pathways targeting the noradrenergic locus coeruleus. *Physiology and Behavior* **73**, 273–283.
- van der Gaag C, Minderaa RB, Keyzers C** (2007). The BOLD signal in the amygdala does not differentiate between dynamic facial expressions. *Social Cognitive and Affective Neuroscience* **2**, 93–103.
- van Stegeren AH, Everaerd W, Cahill L, McGaugh JL, Gooren LJ** (1998). Memory for emotional events: differential effects of centrally versus peripherally acting beta-blocking agents. *Psychopharmacology (Berlin)* **138**, 305–310.
- van Stegeren AH, Goekoop R, Everaerd W, Scheltens P, Barkhof F, Kuijper JP, Rombouts SA** (2005). Noradrenaline mediates amygdala activation in men and women during encoding of emotional material. *Neuroimage* **24**, 898–909.
- van Stegeren AH, Wolf OT, Everaerd W, Rombouts SA** (2008). Interaction of endogenous cortisol and noradrenaline in the human amygdala. *Progress in Brain Research* **167**, 263–268.
- Vaiva G, Ducrocq F, Jezequel K, Averland B, Lestavel P, Brunet A, Marmar CR** (2003). Immediate treatment with propranolol decreases posttraumatic stress disorder two months after trauma. *Biological Psychiatry* **54**, 947–949.
- Wood AJ, Carr K, Vestal RE, Belcher S, Wilkinson GR, Shand DG** (1978). Direct measurement of propranolol bioavailability during accumulation to steady-state. *British Journal of Clinical Pharmacology* **6**, 345–350.
- Woodward DJ, Moises HC, Waterhouse BD, Yeh HH, Cheun JE** (1991). Modulatory actions of norepinephrine on neural circuits. *Advances in Experimental Medicine and Biology* **287**, 193–208.
- Young AW, Perret DI, Calder A, Sprengelmeyer R, Ekman P** (2002). *Facial Expressions of Emotion: Stimuli and Test*. Harcourt Assessment: San Antonio, Texas.
- Young MP, Scannell JW, Burns GA, Blakemore C** (1994). Analysis of connectivity: neural systems in the cerebral cortex. *Reviews in the Neurosciences* **5**, 227–249.