

A New Tarsier Species from the Togean Islands of Central Sulawesi, Indonesia, with References to Wallacea and Conservation on Sulawesi

Myron Shekelle¹, Colin P. Groves^{2†}, Ibnu Maryanto³, Russell A. Mittermeier⁴, Agus Salim⁵ and Mark S. Springer⁶

¹*Department of Anthropology, Western Washington University, Bellingham, WA, USA*

²*School of Archaeology and Anthropology, Australian National University
Canberra, Australia*

³*Museum Zoologicum Bogoriense, LIPI, Cibinong, Indonesia*

⁴*Global Wildlife Conservation, Austin, TX, USA*

⁵*PT. Hatfield Indonesia, Jakarta, Indonesia*

⁶*Department of Evolution, Ecology, and Organismal Biology, University of California, Riverside, CA, USA*

Abstract: We describe and name a new species of tarsier from the Togean Islands, in Tomini Bay, bounded by the northern and eastern peninsulas of Sulawesi. In doing so, we highlight how 25 years of sustained research on the alpha taxonomy of Sulawesian tarsiers, *Tarsius*, have helped to identify key conservation priorities in the Sulawesian region of the Wallacea Biodiversity Hotspot.

Key words: Biodiversity, bioacoustics, cryptic species, duet call, Togean form, taxonomy, hotspots

Introduction

The impending global environmental catastrophe of biodiversity loss has been termed the “sixth mass extinction” (for example, Leakey and Lewin 1996), and led Myers *et al.* (2000) to propose that global conservation priorities should focus especially on the “hotspots” method for identifying global conservation priorities; with only so much time and resources, conservation efforts should be spent “where exceptional concentrations of endemic species are undergoing exceptional loss of habitat” (p.853; see also Mittermeier and Rylands 2017). Wallacea is one of the top 25 global hotspots for biodiversity conservation, and Sulawesi is by far the largest landmass within it, and by some measures the highest regional priority for conservation (Wilson *et al.* 2006).

In the time since Niemitz (1984) revised tarsier taxonomy and MacKinnon and MacKinnon (1980) published the first report of wild tarsiers from Sulawesi—wherein they noted the presence of a duet call with geographically-structured variation and the likelihood of much unrecognized taxonomic variation—the number of recognized tarsiers on Sulawesi has

grown from one to twelve (including the species described here). Based on variation in their calls, Shekelle and Leksono (2004) predicted that 16 or more cryptic species would eventually be described from Sulawesi and its surrounding islands. Nietsch and Niemitz (1993) reported tarsiers from the Togean Island chain, and believed that they might be taxonomically distinct. The suggestion to taxonomically separate Togean Island tarsiers was supported by further work on the role of vocalizations in species differentiation among the Sulawesi tarsiers by Nietsch and Kopp (1998) and Nietsch (1999). Shekelle *et al.* (1997) conducted playback tests in the wild that concurred with the findings of Nietsch, i.e. Togean Island tarsiers appeared to be taxonomically separable on the basis of vocalizations. Shekelle (2003) reported that genetic data were consistent with the hypothesis that tarsier acoustic forms, including the Togean form, were distinct species, a finding also supported by Shekelle (2008) and Shekelle *et al.* (2010). The hypothesis that tarsier acoustic groups are distinct species was robustly supported in a fine-grained phylogeographic study of *T. dentatus* and *T. lariang* by Merker *et al.* (2009), who tested sequence data from mtDNA, y-chromosome, and microsatellites against bioacoustics and morphology along a transect that passed through the species boundary.

†Colin P. Groves 1942-2017



Figure 1. Skulls of three type specimens (left to right), *Tarsius supriatnai*, *T. spectrumgurskyae* and *T. niemitzi*. Photos by Myron Shekelle.

We present a new molecular phylogeny for Tarsiidae based on 12S mtDNA sequences that offers further support that Togean Island tarsiers are taxonomically separable from other known tarsier taxa.

Tarsius niemitzi sp. nov.

Holotype: MZB 32654 (Fig. 1, Table 1), adult male. Museum Zoologicum, Bogoriense, Cibinong, West Java, Indonesia. Collector: Simson Katiandagho, 1 October 2009.

Type locality: Desa Benteng, Kecamatan Togean, Kabupaten Tojo Una-Una, Central Sulawesi, Indonesia. Geographical coordinates for Desa Benteng, Togean Island are 0°23'36.7"S, 122°01'37.8"E.

Hypodigm: Only the type specimen available.

Description: MORPHOLOGY: Surveys of wild populations have indicated that body weight and tail length fall within the range of a number of other *Tarsius* species, including *T. tarsier*, *T. fuscus*, *T. dentatus*, *T. spectrumgurskyae*, and *T. supriatnai*. Body weights and tail lengths may well overlap with all species of *Tarsius*, except *T. pumilus* and possibly some offshore taxa, such as *T. sangirensis*. Body weight: female 104–110 g (n = 2); male 125–138 g (n = 3). Tail length: female = 245–261 mm (n = 2); male 246–258 mm (n = 3) (data from Shekelle 2003). *Tarsius niemitzi* is similar to *T. dentatus* in having darkly pigmented skin, particularly the tail,

Table 1. Measurements of type specimens compared with two recently described species *T. spectrumgurskyae* and *T. supriatnai*.

| Type specimens | <i>T. spectrumgurskyae</i> | <i>T. supriatnai</i> | <i>T. niemitzi</i> |
|---|----------------------------|----------------------|--------------------|
| Acoustic group | Manado form | Gorontalo form | Togean form |
| Specimen number | MZB3269 | MZB6595 | MZB 32654 |
| Age | adult | adult | adult |
| Sex | m | m | m |
| Measurements following Musser & Dagosto (1987) | | | |
| Greatest length of skull | 37.1 | 37.4 | 38.2 |
| Zygomatic breadth | 26.8 | 26.2 | 25.8 |
| Breadth across orbits | 29.9 | 29.4 | 30.1 |
| Breadth of a single orbit | 17.2 | 17.3 | 17.7 |
| Height of a single orbit | 17.9 | 18.3 | 17.8 |
| Length of nasals | 7.0 | 6.8 | 7.4 |
| Breadth of bony palate at M ³ | 14.1 | 14.1 | 15.1 |
| Length of auditory bulla | 11.2 | 11.8 | 11.9 |
| Breadth of auditory bulla | 6.6 | 5.6 | 5.9 |
| Length of anterior part of bulla | 5.6 | 5.9 | 6.4 |
| Length of posterior part of bulla | 6.3 | 6.4 | 6.4 |
| Length of upper toothrow, C-M ³ | 12.8 | 12.1 | 13.0 |
| Length of lower toothrow, C-M ₃ | 13.3 | 12.9 | 14.0 |
| Length of M ¹ | 2.4 | 2.0 | 2.5 |
| Breadth of M ¹ | 3.5 | 3.3 | 3.9 |
| Length of M ₁ | 2.3 | 2.0 | 2.0 |
| Breadth of M ₁ | 2.2 | 2.3 | 2.0 |
| Groves (1998) | | | |
| Ear length | 23.7 | 26.1 | 30.1 |
| Ear width | | | 17.6 |
| Tibia | 62.2 | 63.0 | 60.6 |
| Tarsus | 34.2 | 34.6 | 29.2 |
| Length of third finger | 25.2 | 24.1 | |
| Inter orbital | 2.2 | 1.8 | 2.9 |
| Post orbital width | 22.4 | 21.3 | 20.9 |
| Nasal breadth | 3.6 | 3.3 | 3.7 |
| Palatal length | 13.6 | 13.7 | 14.1 |
| Mesopterygoid fossa width | 3.4 | 3.4 | 2.7 |
| Ramus angular process | 10.3 | 10.2 | 10.4 |
| Dentary length | 24.2 | 24.8 | 24.4 |
| Tail length | 230 | 236 | 262 |

and relatively dark pelage with dark gray facial fur, particularly in adults (Fig. 3). Atypical for tarsier species endemic to small islands, *T. niemitzi* does not have a reduced tail tuft (see Shekelle *et al.* 2008b). VOCALIZATIONS: Spectrograms of the Togean form were published by Nietsch and Kopp (1998) (Fig. 4). Its duet is structurally simple, possibly the simplest of all known tarsier duets (Nietsch and Niemitz 1993). One female call is followed by two or three male calls. The female note is a downward modulated whistle, with a maximum frequency of 12–13 kHz, and a minimum frequency around 6 kHz. Each female note has a duration of about 0.5 seconds and notes are repeated at the rate of about 1 call per 1.5 seconds. The male note resembles a temporally compressed version of the female call: maximum frequency is around 10–11 kHz, and the minimum frequency is 5 kHz or lower. The duration of the male note is only about 0.15 seconds. Male calls occur in a phrase of 2 or 3 notes that gradually ascend in maximum frequency. Togean tarsiers are unique among known tarsier acoustic forms in that they respond in playback experiments to all other tarsier duet calls by duetting themselves (Fig. 5). GENETICS: Shekelle *et al.* (2008a) reported genetic evidence showing Togean Island tarsiers to be a monophyletic clade with an apomorphic 2 base pair deletion in the 12S gene that is diagnostic of the clade. Shekelle *et al.* (2010) used a subset of their previous alignment, which eliminated the region with the 2 bp deletion from the analysis.



Figure 2. Top right: Southeast Asia and Australia, with red box indicating contents of Top Left. Top left: Sulawesi, with red box indicating contents of bottom. Bottom: The Togeian Islands in the U-shaped bay of Tomini, bordered in the north and west by the northern peninsula, and the south by the eastern peninsula of Sulawesi, Indonesia. Expected species distribution circled in red, approximate location of type locality marked with red X.



Figure 3. Niemitz's tarsier *Tarsius niemitzi* sp. n. from Malenge Island, Sulawesi. Photo by Myron Shekelle, illustration by Stephen D. Nash.

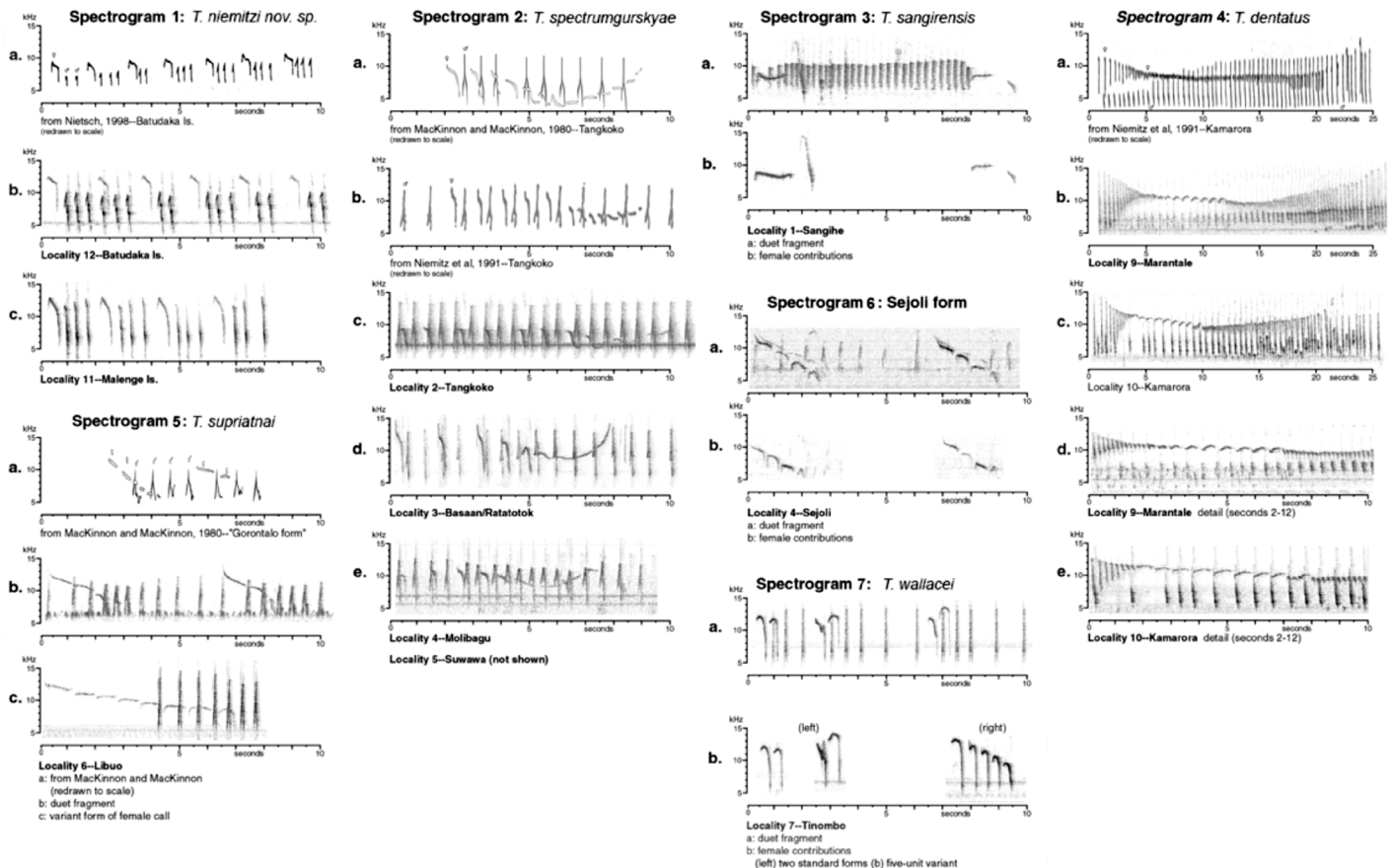


Figure 4. Spectrograms for six species of Eastern tarsiers (adapted from Shekelle 2008). The Sejoli form might be conspecific with *T. supriatnai*.

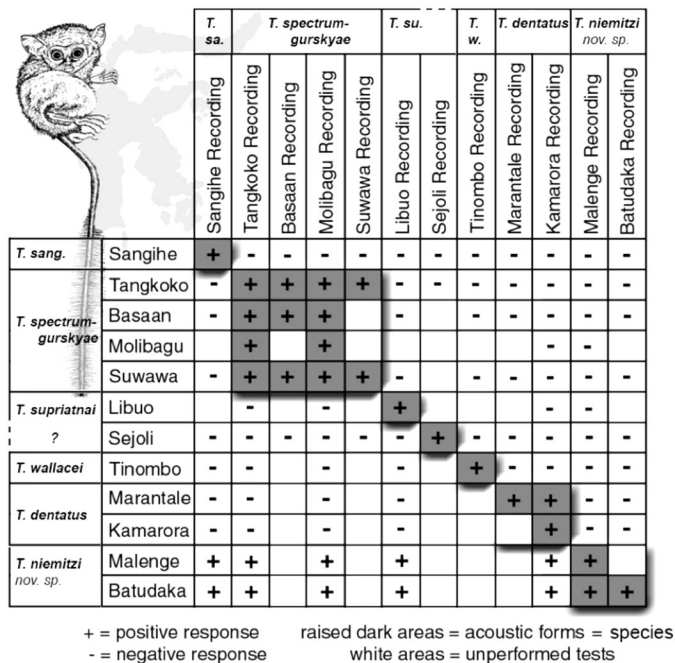


Figure 5. Results of playback tests (adapted from Shekelle 2008).

Nevertheless, Togeian Island tarsiers were still recovered as a monophyletic clade. We performed a new alignment after downloading the sequences from GenBank, and again find a robustly supported monophyletic clade (Fig. 6).

Diagnosis: The duet call, and the species provenance and genetics are diagnostic.

Distribution: Togeian Islands, except for Una Una (Fig. 2).

Etymology: Niemitz’s tarsier. This species is named in honor of Dr. Carsten Niemitz, universally regarded as the father of tarsier field biology. Although his field work was preceded by that of Fogden (1974), it was Niemitz who first dedicated a substantial part of his career to the systematic study of wild tarsiers. Niemitz and his student, Alexandra Nietsch, surveyed tarsiers in Central Sulawesi. Subsequently, reportedly acting on a tip from an Indonesian government official, Rolex Lameanda, Nietsch traveled to the Togeian Islands to survey tarsiers there and, with Niemitz, was the first to report their presence and the likelihood of their taxonomic distinctiveness (Nietsch and Niemitz 1993). We have found no evidence that *Tarsius togeanus* (as per Surjadi and Supriatna 1998, p.281; Ito *et al.* 2008, p.234) and *T. togianensis* (as per Gursky 2007, p.5) are names arising from formal descriptions, and they are as such *nomina nuda*.

Local Name: Busing, tangkasi, podi

Field work: Nietsch and Niemitz (1993), Shekelle *et al.* (1997), Nietsch and Kopp (1998), Nietsch (1999), Shekelle (2003, 2008).

Material examined: There is no material that we know of other than the type specimen. Shekelle (2003) observed and photographed several individuals that were captured and released.

Methods

DNA sequences for the 12S rRNA gene in *Tarsius*, *Carlito*, and *Cephalopachus* were downloaded from GenBank and imported into Geneious Prime 2019.1.1 (Kearse *et al.* 2012). Partial sequences <750 bp in length were discarded. The remaining 29 sequences were aligned in Geneious with MAFFT (Katoh *et al.* 2002; Katoh and Standley 2013). The resulting alignment encompassed 968 bp for 11 tarsiid species. We used PhyML 3.3.20180214 (Guindon *et al.* 2010) to construct a maximum likelihood phylogram and to perform a bootstrap analysis with 500 pseudoreplicates. We employed a GTR + Γ model of sequence evolution with SPR branch swapping. We also analyzed the 12S alignment with MrBayes 3.2.6 (Huelsenbeck and Ronquist 2001) and a GTR + Γ model of sequence evolution. The Bayesian analysis was run for 1,000,000 generations after a burnin of 100,000 generations with four heated chains. A molecular dating analysis was performed with the mcmctree program (Yang and Rannala, 2006) in PAML (Yang 2007). Given the absence of appropriate tarsiid fossils for calibrating the tree, we employed secondary calibrations for three different nodes. First, crown Tarsiidae was calibrated with a minimum age of 20.4 Ma and a maximum age of 25.2 Ma based on five recent timetree studies that are available on timetree.org (Fabre *et al.* 2009; Shekelle *et al.* 2010; Springer *et al.* 2012; dos Reis *et al.* 2012; Pozzi *et al.* 2014). We also employed minimum and maximum age constraints for *Carlito* to *Cephalopachus* (min = 4.8 Ma, max = 18.6 Ma) and crown *Tarsius* (min = 3.4 Ma, max = 11.1 Ma) based on Shekelle *et al.* (2010). The mcmctree analysis was run for 100,000 generations after 10,000 generations of burnin. We performed the analysis with autocorrelated rates and soft-bounded constraints that allowed for 2.5% tail probabilities.

Results

Figure 6A shows the timetree that resulted from the mcmctree analysis. The maximum-likelihood phylogram (log-likelihood = -2835.37431) from the PhyML analysis of 12S rRNA mtDNA is shown in Figure 6B. The phylogram and timetree are both rooted between *Tarsius* and *Carlito* + *Cephalopachus* following Groves and Shekelle (2010) and Springer *et al.* (2012). Bootstrap support percentages (PhyML) and posterior probabilities (MrBayes) are also shown on the timetree for clades that are supported above the 50% bootstrap and 0.50 posterior probability levels. Relationships among different species of *Tarsius* are not well resolved, but the Togeian Island tarsiers form a well-supported monophyletic clade (bootstrap support = 92%, posterior probability = 0.98). This support level is comparable to that for *T. dentatus* (92.8%) and *T. wallacei* (90.0%).

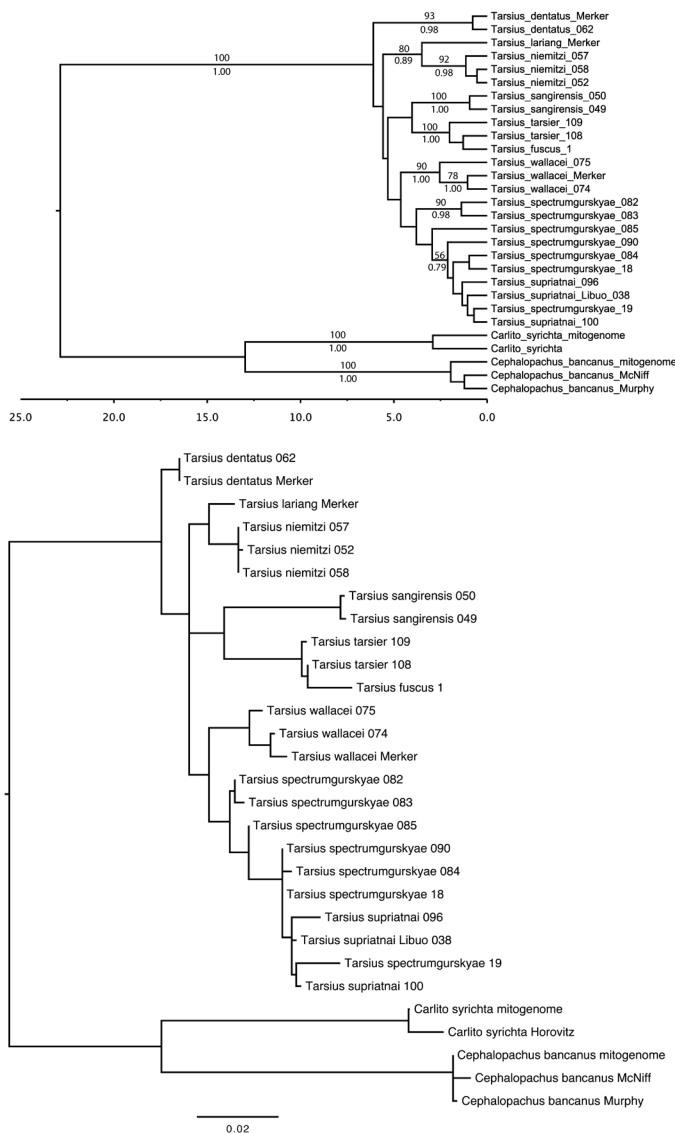


Figure 6. A (above). Time-calibrated phylogeny based on mcmctree (Yang and Rannala 2006) with bootstrap support percentages (PhyML) above branches, and Bayesian posterior probabilities below branches for clades with support values >50% (bootstrap percentages) and 0.50 (posterior probabilities). The timescale is in millions of years. See Table 2 for specimen ID and GenBank accession numbers. B (below). Maximum likelihood phylogram based on PhyML 3.3.20180214 (Guindon *et al.* 2010) analysis of 12S rRNA sequences with a GTR + Γ model of sequence evolution.

Discussion

We describe a new species of tarsier from the Togean Islands of Central Sulawesi, Indonesia. It was long suspected on the basis of bioacoustic (Nietsch and Niemitz 1993) and biogeographic (Shekelle and Leksono 2004) evidence, and later mtDNA sequence (Shekelle *et al.* 2008). Merker *et al.* (2014) have argued for a cautious interpretation of mtDNA trees, particularly in tarsiers. Indeed, Merker *et al.* (2009) made a far stronger case for the taxonomic separability for the species that Merker and Groves described in 2006, on the basis of morphological, anatomical, and acoustic analyses, than we make here. But as with their experience, we are cautiously optimistic that subsequent analyses, using more

Table 2. Specimens in the phylogenetic analysis.

| Species | Taxon name on trees | GenBank Accession |
|----------------------------------|-----------------------------------|-------------------|
| <i>Carlito syrichta</i> | Carlito syrichta Horovitz | AF069976 |
| <i>Carlito syrichta</i> | Carlito syrichta mitogenome | AB371090 |
| <i>Cephalopachus bancanus</i> | Cephalopachus bancanus Murphy | AY012131 |
| <i>Cephalopachus bancanus</i> | Cephalopachus bancanus McNiff | AF153001 |
| <i>Cephalopachus bancanus</i> | Cephalopachus bancanus mitogenome | AF348159 |
| <i>Tarsius dentatus</i> | Tarsius dentatus 062 | HM470229 |
| <i>Tarsius dentatus</i> | Tarsius dentatus Merker | KC977310 |
| <i>Tarsius lariang</i> | Tarsius lariang Merker | KC977309 |
| <i>Tarsius niemitzi</i> sp. nov. | Tarsius niemitzi 052 | HM470219 |
| <i>Tarsius niemitzi</i> sp. nov. | Tarsius niemitzi 057 | HM470220 |
| <i>Tarsius niemitzi</i> sp. nov. | Tarsius niemitzi 058 | HM470221 |
| <i>Tarsius sangirensis</i> | Tarsius sangirensis 049 | HM470205 |
| <i>Tarsius sangirensis</i> | Tarsius sangirensis 050 | HM470206 |
| <i>Tarsius tarsier</i> | Tarsius tarsier 108 | HM470222 |
| <i>Tarsius tarsier</i> | Tarsius tarsier 109 | HM470223 |
| <i>Tarsius fuscus</i> | Tarsius fuscus 1 | HM470224 |
| <i>Tarsius wallacei</i> | Tarsius wallacei 074 | HM470215 |
| <i>Tarsius wallacei</i> | Tarsius wallacei 075 | HM470216 |
| <i>Tarsius wallacei</i> | Tarsius wallacei Merker | KC977311 |
| <i>Tarsius spectrumgurskyae</i> | Tarsius spectrumgurskyae 18 | HM470211 |
| <i>Tarsius spectrumgurskyae</i> | Tarsius spectrumgurskyae 19 | HM470212 |
| <i>Tarsius spectrumgurskyae</i> | Tarsius spectrumgurskyae 82 | HM470207 |
| <i>Tarsius spectrumgurskyae</i> | Tarsius spectrumgurskyae 83 | HM470208 |
| <i>Tarsius spectrumgurskyae</i> | Tarsius spectrumgurskyae 84 | HM470209 |
| <i>Tarsius spectrumgurskyae</i> | Tarsius spectrumgurskyae 85 | HM470210 |
| <i>Tarsius spectrumgurskyae</i> | Tarsius spectrumgurskyae 90 | HM470213 |
| <i>Tarsius supriatnai</i> | Tarsius supriatnai 096 | HM470217 |
| <i>Tarsius supriatnai</i> | Tarsius supriatnai 100 | HM470218 |
| <i>Tarsius supriatnai</i> | Tarsius tarsier Libuo 038 | HM470214 |

genetic markers, will find strong support for the taxonomic separability of *T. niemitzi*, as Merker and others did for *T. lariang*. We strongly encourage further work on tarsier taxonomy using holistic approaches with complementary data sets.

Extant tarsiers are classified in three genera, following Groves and Shekelle (2010), that are allopatrically distributed in distinct biogeographic regions: *Tarsius* is found on Sulawesi and surrounding islands; *Cephalopachus* is found on a restricted subset of Sundaland, principally southern Sumatra and the island of Borneo; *Carlito* is found on islands of the southern Philippines that were a single Ice Age landmass, sometimes called Greater Mindanao. *Tarsius* contains twelve species (in order of seniority): *T. tarsier* (= *spectrum*), *T. fuscus*, *T. sangirensis*, *T. dentatus* (= *dianae*), *T. pumilus*, *T. pelengensis*, *T. lariang*, *T. tumpara*, *T. wallacei*, *T. spectrumgurskyae*, *T. supriatnai*, and now *T. niemitzi*. Burton and Nietsch (2010) reported three more unnamed taxa from the

Southeastern peninsula of Sulawesi. Shekelle and Leksono (2004) predicted Sulawesi would ultimately be shown to be home to at least 16 distinct tarsier taxa. The speciose alpha taxonomy of *Tarsius* stands in contrast with that of *Cephalopachus* and *Carlito*. We question if this contrast is based upon knowledge or ignorance of the alpha taxonomy of the latter two genera, and we encourage more fieldwork in order to answer this question (see Brandon-Jones *et al.* 2004).

Conservation

One of the most significant outcomes of 25 years of sustained research on the alpha taxonomy by one of us (MS) and subsequently by colleagues (for example, Merker and Groves 2006; Merker *et al.* 2009, 2010; Driller *et al.* 2015) has been to identify the critical conservation hotspots in the Sulawesi region (i.e. Sulawesi plus nearby islands), of the Biodiversity Hotspot of Wallacea (Fig. 7). Reclassifying a single widespread species into numerous allopatric and parapatric cryptic sibling species has the secondary effect of clarifying conservation priorities (Bickford *et al.* 2007).

Specifically, the *T. tarsier* species complex (i.e. all of the species of *Tarsius* except for *T. pumilus*), listed as Lower Risk / Near Threatened (LR/nt) in 2000, would likely be listed as Vulnerable (VU), were it classified as a single species (Fig. 7, Table 3). With reclassification, taxa in this species complex range from VU to Critically Endangered (CR) (Fig. 7, Table 3). Four of the sixteen taxa hypothesized by Shekelle and Leksono (2004) are VU, seven are EN, one is CR, and four are DD (Fig. 7, Table 3).

Gursky *et al.* (2008), following previous work by Supriatna *et al.* (2001) and Shekelle and Leksono (2004) estimated that the Togeian Island tarsier would be Endangered [EN], and that the Togeian Islands were a unique area of endemism in Sulawesi, in that they possess native tarsiers, lack native monkeys, and appear to be geologically separated from the Sulawesi mainland by an ocean barrier that exceeds 120 m in depth—believed to be deeper than the lowest ocean levels during Pleistocene glacial maxima. Each of these assertions are hypotheses for further testing. The broader implication is that the Togeian Islands possess a largely endemic biota of taxa that do not disperse easily across water barriers.

Table 3. Conservation status for 16 Indonesian tarsier taxa and populations (listed in Brandon-Jones *et al.*, 2004) show the impact of 25 years of sustained research on the alpha taxonomy of Sulawesian tarsiers of the genus *Tarsius* toward priority areas in the Wallacea Biodiversity Hotspot.

| Taxon/Population | | Location | Conservation Status | | |
|------------------|--|--|---------------------|--|-----------------------------|
| | | | IUCN 2000 | Indonesian Primate CAMP (Supriatna <i>et al.</i> 2001) | Gursky <i>et al.</i> (2008) |
| 1. | <i>Tarsius tarsier</i> Selayar form | Selayar Is. | LR/nt | EN (B1ab) | EN (B12bc) |
| 2. | Kendari Form | Sulawesi: near Kendari | LR/nt** | EN (B1ab) | DD |
| 3. | Buton Form* | Buton Island | LR/nt** | VU (B1ab) | VU (B12bc) |
| 4. | Kabaena Form* | Kabaena Is. | Not Evaluated (NE) | Not Evaluated (NE) | EN (B12bc) |
| 5. | <i>Tarsius fuscus</i> Makassar form | Sulawesi: near Makassar | LR/nt** | VU (B1ab) | DD |
| 6. | <i>Tarsius sangirensis</i> Sangihe form | Sangihe & Siau Is. (Sangihe only) | LR/nt** | EN (B1abc) | EN (B12bc) |
| 7. | <i>Tarsius dentatus</i> (=dianae) Kamarora form | Sulawesi: E. central | LR/cd | LR/nt | VU (B12ac) |
| 8. | <i>Tarsius pumilus</i> | Sulawesi: central montane 1800-2200m | DD | DD | EN (B12c) |
| 9. | <i>Tarsius pelengensis</i> Peleng form | Peleng Is. | DD | EN (B1ab) | EN (B12ab) |
| 10. | <i>Tarsius lariang</i> Palu Form | Sulawesi: W. central | LR/nt** | LR/nt | DD |
| 11. | <i>Tarsius tumpara</i> Siau population | Siau Is. | LR/nt** | EN (B1abc) | CR (B12bc) |
| 12. | <i>Tarsius wallacei</i> Tinombo Form | Sulawesi: N. peninsula, Tinombo to Ampibabo, and Uwemanje | LR/nt** | LR/nt | EN (B12bc) |
| 13. | <i>Tarsius spectrumgurskyae</i> Manado Form | Sulawesi: N. peninsula, Gorontalo to northeast tip | LR/nt** | LR/nt | VU (B12bc) |
| 14. | <i>Tarsius supriatnai</i> Gorontalo form | Sulawesi: N. peninsula, Gorontalo to Tanjung Panjang, possibly to Sejoli | LR/nt** | LR/nt | VU (B12bc) |
| 15. | Sejoli form | Surveyed only at Sejoli | LR/nt** | LR/nt | DD |
| 16. | <i>Tarsius niemitzii</i> sp. nov. Togeian form | Togeian Islands | LR/nt** | EN (B1ab) | EN (B12bc) |

*These populations still remain classified with *T. tarsier*, but are implausibly disjunct, and are hypothesized to be three separate taxa.

**These populations were classified with *T. tarsier* (=spectrum) in 2000.

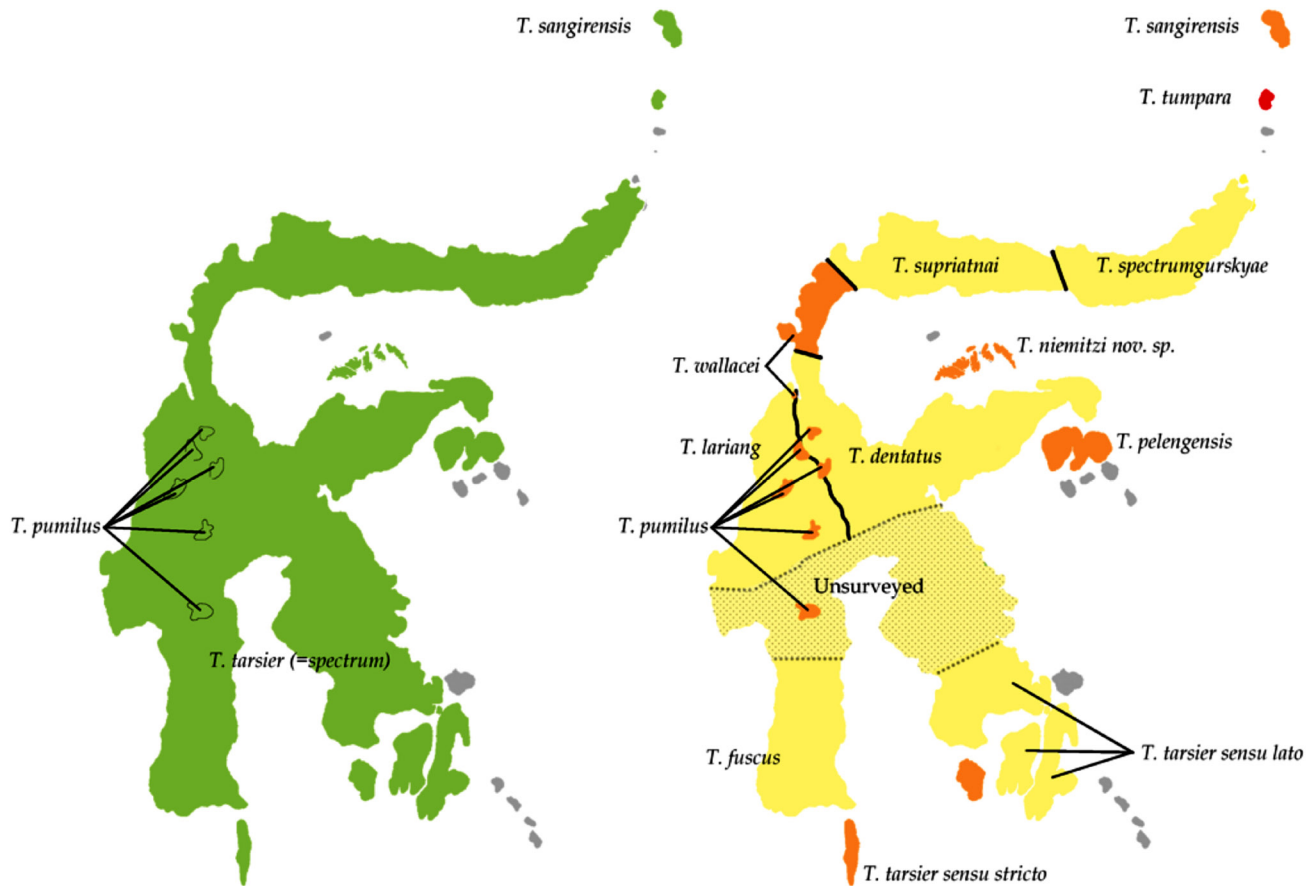


Figure 7. Mapping the priority areas hotspots in the Wallacea Biodiversity Hotspot: a 25-year effort. (L) 2000 and prior, (R) present based upon combined sources (Supriatna *et al.* 2001; Gursky *et al.* 2008; IUCN Red List). Green = LR/NT, Yellow = VU, Orange = EN, Red = CR. Note: distribution of *T. pumilus* is a conjectural representation of regions between 1800–2200 m above sea level in the species' polygon.

Acknowledgments

We are deeply saddened by the passing of our colleague and coauthor, Colin Groves, on November 30, 2017. Colin was described by Jane Goodall as the world's greatest primate taxonomist, and while we concur, that description only scratches the surface of his expertise. A recent bibliography of his work indicates that from his very first taxonomic description, *Didermocerus sumatrensis harrissoni* Groves, 1965 (Perissodactyla: Rhinocerotidae) [= *Dicerorhinus sumatrensis harrissoni*], up to and including this tarsier, Colin Groves authored the description of two new families, five new genera, and 56 species or subspecies (Rookmaaker and Robovsky 2018).

The fieldwork for this study was conducted long ago, and was supported by the National Science Foundation under Grant No. INT 0107277 to MS, and grants from the Primate Action Fund (now managed by the Global Wildlife Conservation), and Primate Conservation, Inc. to MS. Sponsorship for MS in Indonesia during that period was provided by Noviar Andayani of the Center for Biodiversity and Conservation Studies, University of Indonesia, and by the Indonesian Institute for Science. Permits for conducting research in conservation areas and for trapping tarsiers were provided by the Indonesian Department of Forestry. Participation by MS was

facilitated by a grant from the Margot Marsh Biodiversity Foundation and a private donation by the Tjiasmanto Family.

Literature Cited

- Bickford D., D. J. Lohman, N. S. Sodhi, P. K. L. Ng, R. Meier, K. Winker, K. K. Ingram and I. Das. 2015. Cryptic species as a window on diversity and conservation. *Trends Ecol. Evol.* 22: 148–155.
- Brandon-Jones, D., A. A. Eudey, T. Geissmann, C. P. Groves, D. J. Melnick, J. C. Morales, M. Shekelle and C.-B. Stewart. 2004. Asian primate classification. *Int. J. Primatol.* 25: 97–164.
- Burton, J. and A. Nietsch. 2010. Geographical variation in duet songs of Sulawesi tarsiers: evidence for new cryptic species in south and southeast Sulawesi. *Int. J. Primatol.* 31: 1123–1146.
- dos Reis, M., J. Inoue, M. Hasegawa, R. J. Asher, P. C. J. Donoghue and Z. Yang. 2012. Phylogenomic datasets provide both precision and accuracy in estimating the timescale of placental mammal phylogeny. *Proc. Roy. Soc. B* 279: 3491–3500.
- Driller, C., S. Merker, D. Perwitasari-Farajallah, W. Sinaga, N. Anggraeni and H. Zischler. 2015. Stop and go—waves

- of tarsier dispersal mirror the genesis of Sulawesi Island. *PLoS One* 10(11): e0141212.
- Fabre, P. H., A. Rodrigues, and E. J. P. Douzery. 2009. Patterns of macroevolution among primates inferred from a supermatrix of mitochondrial and nuclear DNA. *Mol. Phylogenet. Evol.* 53: 808–825.
- Fogden, M. P. L. 1974. A preliminary field-study of the western tarsier, *Tarsius bancanus* Horsfield. In: *Prosimian Biology*, R. D. Martin, G. A. Doyle, and A. C. Walker, (eds.), pp.151–166. University of Pittsburgh Press, Pittsburgh.
- Groves, C. P. 1989. *A Theory of Human and Primate Evolution*. Clarendon Press, Oxford, UK.
- Groves, C. P. and M. Shekelle. 2010. The genera and species of Tarsiidae. *Int. J. Primatol.* 31: 1071–1082.
- Guindon, S., J.-F. Dufayard, V. Lefort, M. Anisimova, W. Hordijk and O. Gascuel. 2010. New algorithms and methods to estimate maximum-likelihood phylogenies: assessing the performance of PhyML 3.0. *Syst. Biol.* 59: 307–321.
- Gursky, S. L. 2007. *The Spectral Tarsier*. Pearson Education Inc., London.
- Gursky, S., M. Shekelle, and A. Nietsch. 2008. The conservation status of Indonesia's tarsiers. In: *Primates of the Oriental Night*, M. Shekelle, C. P. Groves, I. Maryanto, H. Schulze and H. Fitch-Snyder (eds.), pp.105–114. Research Center for Biology, Indonesian Institute of Sciences, Bogor, Indonesia.
- Huelsenbeck, J. P., and F. Ronquist. 2001. MRBAYES: Bayesian inference of phylogenetic trees. *Bioinformatics* 17: 754–755.
- IUCN. 2008. IUCN Red List of Threatened Species. URL: <<https://www.iucnredlist.org/>>.
- Ito, M., W. Balik, W. and L. Setiawan. 2008. Needs of educational activity for conservation of Togean babirusa in Togean Archipelago, Central Sulawesi. Proceedings, Joint Meeting of 3rd International Meeting on Asian Zoo/Wildlife Medicine and Conservation (AZWMC) and 10th National Veterinary Scientific Conference of IVMA (KIVNAS X PDHI), Bogor, Indonesia, 19–22 August 2008.
- Katoh, K. and D. M. Standley. 2013. MAFFT multiple sequence alignment software version 7: improvements in performance and usability. *Mol. Biol. Evol.* 30: 772–780.
- Katoh, K., K. Misawa, K. Kuma and T. Miyata. 2002. MAFFT. A novel method for rapid multiple sequence alignment based on fast Fourier transform. *Nucleic Acids Res.* 30: 3059–3066.
- Kearse, M., R. Moir, A. Wilson, S. Stones-Havas, M. Cheung, S. Sturrock, S. Buxton, A. Cooper, S. Markowitz, C. Duran, T. Thierer, B. Ashton, P. Mentjies and A. Drummond. 2012. Geneious basic: an integrated and extendable desktop software platform for the organization and analysis of sequence data. *Bioinformatics* 28: 1647–1649.
- Leakey, R. and R. Lewin. 1996. *The Sixth Extinction: Patterns of Life and the Future of Humankind*. Phoenix, London.
- Merker, S. and C. P. Groves. 2006. *Tarsius lariang*: A new primate species from western central Sulawesi. *Int. J. Primatol.* 27: 465–485.
- Merker, S., C. Driller, D. Perwitasari-Farajallah, J. Pamungkas and H. Zischler. 2009. Elucidating geological and biological processes underlying the diversification of Sulawesi tarsiers. *Proc. Natl. Acad. Sci. USA* 106: 8459–8464.
- Merker, S., C. Driller, H. Dahrudin, Wirdateti, W. Sinaga, D. Perwitasari-Farajallah and M. Shekelle. 2010. *Tarsius wallacei*: a new tarsier species from Central Sulawesi occupies a discontinuous range. *Int. J. Primatol.* 31: 1107–1122.
- Merker, S., S. Thomas, E. Völker, D. Perwitasari-Farajallah, B. Feldmeyer, B. Streit, M. Pfenninger. 2014. Control region length dynamics potentially drives amino acid evolution in tarsier mitochondrial genomes. *J. Mol. Evol.* 79: 40–51.
- Mittermeier, R. A. and A. B. Rylands. 2017. Biodiversity Hotspots. In: *Encyclopedia of the Anthropocene. Volume 3: Biodiversity*, T. E. Lacher Jr. (ed.), pp.67–75. Elsevier, New York.
- Musser, G. G. and M. Dagosto. 1987. *The identity of Tarsius pumilus*, a pygmy species endemic to the montane mossy forests of Central Sulawesi. *Am. Mus. Novit.* (2867): 1–53.
- Myers, N., R. A. Mittermeier, C. G. Mittermeier, G. A. B. da Fonseca and J. Kent. 2000. Biodiversity hotspots for conservation priorities. *Nature, Lond.* 403: 853–858.
- Napier, J. R. and P. H. Napier. 1967. *A Handbook of Living Primates*. Academic Press, London.
- Niemitz C. 1984. Taxonomy and distribution of the genus *Tarsius* Storr, 1780. In *Biology of Tarsiers*, C. Niemitz (ed.), pp:1–16. Gustav Fischer, New York.
- Nietsch A. 1999. Duet vocalizations among different populations of Sulawesi tarsiers. *Int. J. Primatol.* 20: 567–583.
- Nietsch, A. and M. Kopp. 1998. Role of vocalizations in species differentiation of Sulawesi tarsiers. *Folia Primatol.* 69(suppl. 1): 371–378.
- Nietsch, A. and C. Niemitz. 1993. Diversity of Sulawesi tarsiers. In: *Kurzfassungen de Vorträge und Posterdemonstrationen*, Deutsche Gesellschaft für Säugetierkunde 67. Hauptversammlung und Gessellschaft für Primatologie 3. Jahrestagung, Tübingen, 26 September – 1 October, 1993, pp.45–46. Paul Parey, Hamburg.
- Pozzi, L., J. A. Hodgson, A. S. Burrell, K. N. Sterner, R. L. Raau and T. R. Disotell. 2014. Primate phylogenetic relationships and divergence dates inferred from complete mitochondrial genomes. *Mol. Phylogenet. Evol.* 75: 165–183.
- Rookmaaker, K. and J. Robovsky. 2018. Bibliography of Colin Peter Groves (1942–2017), an anthropologist and mammalian taxonomist. *Lynx, n.s.* (Praha) 49: 255–294.
- Shekelle, M. 2003. Taxonomy and Biogeography of Eastern Tarsiers. Doctoral thesis, Washington University, St. Louis, MO.

- Shekelle, M. 2008. Distribution of tarsier acoustic forms, north and central Sulawesi: with notes on the primary taxonomy of Sulawesi's tarsiers. In: *Primates of the Oriental Night*, M. Shekelle, C. P. Groves, I. Maryanto, H. Schulze and H. Fitch-Snyder (eds.), pp.35–50. Research Center for Biology, Indonesian Institute of Sciences, Bogor, Indonesia.
- Shekelle, M. and S. M. Leksono. 2004. Rencana konservasi di Pulau Sulawesi: dengan menggunakan *Tarsius* sebagai flagship species. *Biota* 9: 1–10.
- Shekelle, M., S. Leksono, L. S. I. Ichwan and Y. Masala. 1997. The natural history of the tarsiers of north and central Sulawesi. *Sulawesi Primate Newsl.* 4(2): 4–11.
- Shekelle M., J. C. Morales, C. Niemitz, L. S. I. Ichwan and D. M. Melnick. 2008a. The distribution of tarsier mtDNA haplotypes for parts of north and central Sulawesi: a preliminary analysis. In: *Primates of the Oriental Night*, M. Shekelle, Groves C. P., I. Maryanto, H. Schulze and H. Fitch-Snyder (eds.), pp.51–69. Research Center for Biology, Indonesian Institute of Sciences, Bogor, Indonesia.
- Shekelle M., C. Groves, S. Gursky, I. Neri-Arboleda and A. Nietsch. 2008b. A method for multivariate analysis and classification of tarsier tail tufts. In: *Primates of the Oriental Night*, M. Shekelle, Groves C. P., I. Maryanto, H. Schulze and H. Fitch-Snyder (eds.), pp.71–84. Research Center for Biology, Indonesian Institute of Sciences, Bogor, Indonesia.
- Shekelle, M., R. Meier, I. Wahyu, Wirdateti and N. Ting. 2010. Molecular phylogenetics and chronometrics of Tarsiidae based on 12S mtDNA haplotypes: evidence for Miocene origins of crown tarsiers and numerous species within the Sulawesi clade. *Int. J. Primatol.* 31: 1083–1106.
- Springer, M. S., R. W. Meredith, J. Gatesy, C.A. Emerling, J. Park, D. L. Rabosky, T. Stadler, C. Steiner, O. A. Ryder, J. E. Janecka, C. A. Fisher and W. J. Murphy. 2012. Macroevolutionary dynamics and historical biogeography of primate diversification inferred from a species supermatrix. *PLoS One* 7: e49521.
- Supriatna, J., J. Manansang, L. Tumbelaka, N. Andayani, M. Indrawan, L. Darmawan, S. M. Leksono, Djuwantoko, U. Seal and O. Byers (eds.). 2001. *Conservation Assessment and Management Plan for the Primates of Indonesia: Final Report*. Conservation Breeding Specialist Group (IUCN/SSC), Apple Valley, MN.
- Surjadi, P. and J. Supriatna. 1998. Bridging community needs and government planning in the Togean Islands, Central Sulawesi, Indonesia. Paper presented to the 1998 International Coral Reef Initiative (ICRI) Meeting, Australia.
- Wilson, K. A., M. F. McBride, M. Bode and H. P. Possingham. 2006. Biodiversity hotspots for conservation priorities. *Nature, Lond.* 440: 337–340.
- Yang, Z. 2007. PAML 4: phylogenetic analysis by maximum likelihood. *Mol. Biol. Evol.* 24: 1586–1591.
- Yang, Z. and B. Rannala. 2006. Bayesian estimation of species divergence times under a molecular clock using multiple fossil calibrations with soft bounds. *Mol. Biol. Evol.* 23: 212–226.

Authors' addresses:

Myron Shekelle, Department of Anthropology, Western Washington University, Bellingham, WA, USA; **Colin P. Groves**†, School of Archaeology and Anthropology, Australian National University, Canberra, ACT 0200, Australia; **Ibnu Maryanto**, Museum Zoologicum Bogoriense, LIPI, Cibinong, Indonesia; **Russell A. Mittermeier**, Global Wildlife Conservation, P. O. Box 129, Austin, TX 78767, USA; **Agus Salim**, PT. Hatfield Indonesia, Jakarta, Indonesia; and **Mark S. Springer**, Department of Evolution, Ecology, and Organismal Biology, University of California, Riverside, CA 92521, USA.

Received for publication: 5 April 2019

Revised: 7 July 2019

Published: 28 December 2019

Appendix: A Dedication

In another sad twist to this work, on 12 April 2019, as we were in the final editing of this manuscript, Eslie Arteban Tamalagi, known as Ecil, passed away suddenly at the age of 47. Ecil was a field assistant for virtually every tarsier field project in this report, including those by Shekelle, Stefan Merker, and Christine Driller, and, we believe, Alexandra Nietsch on her trip to the Togean Islands. Ecil was highly esteemed as a scout leader, outdoorsman, naturalist, and conservationist, besides being one of the most dependable and well-liked tarsier field biologists in Sulawesi. We dedicate this work to his memory. Photo from Ecil's Facebook page.

