



# Saint Hilary School

Where faith, family, and academics thrive!

Dear Parent/Guardian,

January 13, 2016

Congratulations to our 8<sup>th</sup> graders who took the Catholic High School Placement Test last Saturday. We are proud of you and excited to see where your adventure will continue.

Congratulations to Daryl and Ann McNabb recipients of The Christifideles Award. They received the award last Sunday from Archbishop Cupich at Holy Name Cathedral. The Christifideles Award is given to Catholic laypeople who have, by participating in parish life, demonstrated the personal and ministerial renewal called for by the papal exhortation *Christifideles Laici*, calling the laity to the “vocation of responsibility for the church’s life springing from the gift and mission of their baptism.”

Today we celebrate the feast day of St. Hilary. He was a wise man ahead of his time, he stood firm in his beliefs in studying and taking the opportunity to learn and share our faith. We should be proud to be a part of a community that bears his name.

## **Catholic Schools Week:**

Catholic Schools Week begins on Sunday, January 31<sup>st</sup>. This is an important week when we celebrate the unique opportunities of choosing Catholic education for your child. Sunday will be filled with ways to celebrate our faith, family, and academics.

- We will celebrate our families with a Pancake breakfast hosted by the Family & School Association.
- We will celebrate our faith with a 10:00 Family Mass.
- We will celebrate our academics with an Open House from 11:30 a.m. – 1:30 p.m. Activities will be held in each of our classrooms.
- Registration kicks off for the 2016-2017 school year. Two families will be chosen to receive free registration when you register on this day. A raffle will be held and the two winners will be chosen at the end of the day.
- All children who register on Sun. Jan. 31<sup>st</sup> will receive a dress down pass.

Remember to assure a seat for your child next year register early. Take advantage of the Registration Raffle on Jan. 31<sup>st</sup> for free registration fees. If you know any families who are looking for a quality, caring Catholic school for their child invite them to all of our activities on Sun. Jan. 31<sup>st</sup> and please share their contact information with me so that I am able to extend the invitation as well. Thank you for your assistance in growing St. Hilary School.

**Safety:**

Thank you for your cooperation and understanding in regards to the unusual emergency closing last Friday. Thankfully, our teachers are back and healthy. It is our hope that we will continue to maintain a clean safe building for all of our children, faculty, and staff.

As you know, safety is our first priority. I do want to remind you that we all need to work together both in and out of school to maintain a safe campus for our children and families. It has, once again, been brought to my attention that some of us are being a bit careless when entering and leaving our parking lot and school grounds. I am certain that none of us want to be responsible for the injury of a child when we are behind the wheel of our car. Please remember these important traffic laws and procedures as you bring your child to school and pick them up.

- refrain from making turns when pedestrians have entered the walkway
- do not make a left turn out of the St. Hilary parking lot – signs are clearly posted
- drive the correct way on the one-way alley – signs are clearly posted
- do not block the entrance ramps to sidewalks

Thank you for helping to keep all of our children and families safe as they travel to and from school.

**Reminders:**

Mrs. Rhodes is submitting students' art work to Artsonia and has a number of students who have received the "Artist of the Week" award. Check out her page on our school website to see our amazing artists. We do have some very talented students.

If you have a video from the Christmas Concert and are able to share it, please email the video to Ms. Lamorena so she can post it on her St. Hilary Music Department Facebook page. We would love to share this amazing evening with everyone.

**Mark your calendars:**

Join Mrs. Rhodes and Ms. Lamorena for a night of Painting and Singing on Sat. Jan. 23rd from 7:00 – 10:00 p.m. in the cafeteria. See the flyer in today's envelope for more information on this fun evening night for adults.

Technology is growing each day and while it gives us many advantages in how we communicate and live our daily lives it is something that all of us need to be educated on. Det. Charles Hollendoner from the Chicago Police Department Special Investigations Unit has graciously offered to return to St. Hilary to present an internet safety presentation on February 4<sup>th</sup> for the children. There will be two separate presentations for the children so that he can vary the information according to the children's ages. He will also be here in the evening 6:30 – 8:00 p.m. for a special

parents' presentation. It is extremely important that we, as parents, are well informed and knowledgeable about the internet to keep our children safe. Hope you are able to attend.

Saturday, February 6<sup>th</sup> test your trivia skills when the Alumni Association hosts our Annual Quiz Night. This is a fun "adults-only" event where you can test your wits with other families, friends, and even the teachers. Gather 10 people and sign up today – see the flyer in today's envelope.

**Contents of this Wednesday's envelope:**

- SCP flyer
- FSA Pancake Breakfast flyer
- Paint & Sing flyer
- FSA Meeting flyer

**Mark your calendars:**

- Wed. Jan. 13<sup>th</sup>- Family & School Association Meeting 7:00 p.m. in the café
- Thurs. Jan. 14<sup>th</sup> – Mandatory 1<sup>st</sup> Communion Parent Meeting 7:00 p.m. in the church
- Fri. Jan. 15<sup>th</sup> – 8<sup>th</sup> grade Graduation pictures  
Jr. High Dance 6:30 – 9:00 p.m. 6<sup>th</sup> – 8<sup>th</sup> graders
- Mon. Jan. 18<sup>th</sup> is No School in honor of Dr. Martin Luther King, Jr.
- Sat. Jan. 23<sup>rd</sup> – Paint and Sing Night 7:00 in the cafeteria

**Emergency Closing/Cold Weather**

Cold weather: Students will be kept in for indoor recess when the temperature is below 25 degrees (actually or with wind chill) or in wet rainy/snowy conditions. Please make sure your child comes prepared to go outdoors – gloves, scarf, hat or hood. This is especially true of those who are on patrol.

### **Emergency Closing Information**

Our SchoolReach system will notify you either by phone or email in the event of our school closing due to weather. In addition, emergency closing information will be announced on WBBM Radio Newsradio 780 and WGN Radio 720. The television stations to watch are CBS Channel 2 Chicago, Channel 5, ABC Channel 7 Chicago, WGN Morning News, Fox 32 and CLTV News. On-line you may access information at [www.EmergencyClosings.com](http://www.EmergencyClosings.com). Our website [www.sthilarychicago.org](http://www.sthilarychicago.org) will also have closing information. We will close if the Archdiocese closes and if CPS Closes – extremely rare events. **You should choose, based on your own judgment and situation, whether or not to keep your child(ren) home.**

Please check out the Peek at the Week for a look at the week ahead.

As always, if you have any questions please feel free to contact me at school 773-561-5885 or by email [donovan@sthilarychicago.org](mailto:donovan@sthilarychicago.org).

Gratefully,

*Mrs. Kathie Donovan*

Mrs. Kathie Donovan  
Principal

# A Peek at the Week

Week of January 18 - 22

*St. Hilary where faith, family, and academics thrive!*

## **MONDAY: January 18<sup>th</sup>**

**Altar Servers: Gail, Nora**

- ✓ No Religious Education classes
- ✓ NO SCHOOL - Dr. Martin Luther King, Jr. Day

## **TUESDAY: January 19<sup>th</sup>**

**Altar Servers: Toni, Phuc**

- ✓ Student Council meeting – officers
- ✓ Battle of the Books in Room 204 3:00 – 4:45 p.m.

## **WEDNESDAY: January 20<sup>th</sup>**

**Altar Servers: Luke, volunteer**

- ✓ 8:30 a.m. All-school liturgy
- ✓ Battle of the Books in Room 204 3:00 – 4:45 p.m.
- ✓ Cadet Band 7 – 7:45 a.m.
- ✓ Conference requests go home

## **THURSDAY: January 21<sup>st</sup>**

**Altar Servers: Sidonie, Nicholas**

- ✓ Activity/Sports/Club pictures for yearbook
- ✓ Cardinal Choir Practice 3:00 – 4:00 p.m. in Room 109
- ✓ Concert Band 7 – 7:45 a.m.

## **FRIDAY: January 22<sup>nd</sup>**

**Altar Servers: Nathan, Rianne**

✓

## **SATURDAY: January 23<sup>rd</sup>**

**Altar Servers: 8:30 a.m. volunteers**

**5:00 p.m. Brandon, Willy, and volunteer**

## **SUNDAY: January 24<sup>th</sup>**

**Altar Servers: 8:00 a.m. Truc, Thao, Tam**

**10:00 a.m. Nathan, Christine L., Luke**

**12:00 Noon Roswell, Rianne, Justin Aves**

-----  
Paint and Sing Night on Sat. January 23<sup>rd</sup> – an adults-only event  
7:00 – 10:00 p.m. in the cafeteria





*Toasty*



*T*

*Treats*

**Student Council will be hosting a winter snack sale from Jan. 14 and 15.**

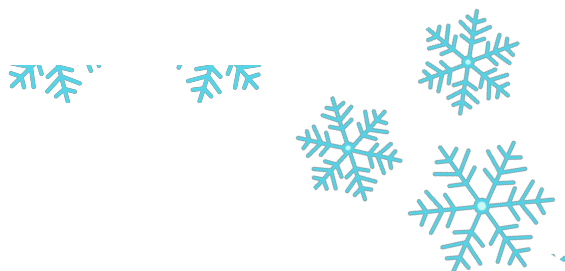
**You can find us after school in the parking lot selling lots of types of cookies like s'mores and sugar cookies,**



**Brr-ownies and much more! Plus hot chocolate with any topping you could imagine!**

**Prices will range from \$.25 - \$1.50**

**Come and support Student Council and get some delicious and toasty treats!**





# Family & School Association MEETING TONIGHT

Welcome back! Join us and bring a friend to the monthly meeting of the St. Hilary FSA. All parents and guardians are members and are invited to attend. We will be discussing the Catholic Schools Week Pancake Breakfast, Sweetheart Dance, and other upcoming events and programs.

**Where:**      **School cafeteria**  
(enter on California)

**When:**      **Wed., Jan. 13**

**Time:**      **7—8 p.m.**

# HELP THE ARTS WITH ART!

## PAINT & SING

GATHER. LEARN. PAINT. EAT. DRINK. AND BE MERRY!

St. Hilary is hosting its first ever paint party! Like to socialize? Like to relax? Always wanted to be artsy? Like to let loose? This is what the Paint & Sing is all about!

Mrs. Karma Rhodes will be teaching and demonstrating on how to paint your own masterpiece! And to make it even better, it's **BYOB**! Bring your own beverages and snacks to enjoy while you get down with artsy self! The cherry on top? There will be optional Karaoke available in between art instruction and letting the paint dry!

**What:** Paint & Sing – The first party at St. Hilary for 2016

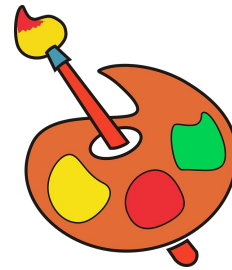
**Who:** All 21yr. and older hip people looking to help the art program at St. Hilary School

**When:** Saturday, January 23rd 7pm - 10pm

**Where:** St. Hilary Cafeteria

**Why:**

- You want to support the art program!
- You have always wanted to go to a paint party place
- You need new decor in your home
- You want to bond with the St. Hilary Community
- You NEED to have a night away from the kiddos
- You are a karaoke star
- Other \_\_\_\_\_



Admission is \$30 for a single ticket and \$50 for two. The majority of the fee covers supplies (paint, brushes, canvas, etc) and the remaining proceeds will help the St. Hilary School art program.

Please return the bottom part of this form to St. Hilary School to reserve your spot. **YOU MUST PRE-REGISTER TO ATTEND THIS EVENT IN ORDER FOR US TO PURCHASE THE NEEDED SUPPLIES FOR YOU. No tickets will be sold at the door.**

-----  
—

Name \_\_\_\_\_ Phone/Email \_\_\_\_\_

No. of Tickets \_\_\_\_\_ Total amount \_\_\_\_\_

Please make checks payable to St. Hilary School. Questions? [rhodes@sthilarychicago.org](mailto:rhodes@sthilarychicago.org)



**SAVE THE DATE • SAVE THE DATE • SAVE THE DATE**

# Pancake Breakfast

**Sunday, Jan. 31 • 9a.m. – noon**

**St. Hilary School Cafeteria**



**enjoy an all-you-can-eat BREAKFAST and  
CELEBRATE CATHOLIC SCHOOLS WEEK**

**Please come and support this event  
and our fantastic school!**

Sponsored by the St. Hilary Family & School Association



**Saturday, February 6, 2016**

**St. Hilary School Vacala Auditorium  
5615 North California Avenue  
Chicago, Illinois**

**WIN MONEY\*\*TEST YOUR KNOWLEDGE\*\*HAVE FUN**

**Doors open at 6:30 PM**

**Trivia questions begin promptly at 7:00 PM**

**\$20 PER PERSON or \$200 PER TABLE (Tables of 10)**

**Register with a table or join a team that night**

**Bring in your own food and drink**

**Alcohol permitted**

**21 + age event**

**All money raised goes to St. Hilary School!**

---

**10 Categories**

**Winning Table \$500**

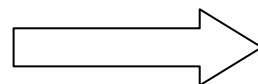
**10 Questions per Category**

**Best Theme Table \$100**

---

***A Community Event Hosted by St. Hilary Alumni Association***

***Registration form on the back of this flyer***



# Quiz Night Registration

---

**CONTACT PERSON FOR TEAM:**

NAME \_\_\_\_\_

ADDRESS \_\_\_\_\_

CITY/STATE/ZIP \_\_\_\_\_

PHONE \_\_\_\_\_

**TEAM MEMBERS IF KNOWN:**

1.	6.
2.	7.
3.	8.
4.	9.
5.	10.

**I AM COMING AS A SINGLE PERSON, PLEASE ADD ME TO A TEAM:**

NAME \_\_\_\_\_

ADDRESS \_\_\_\_\_

CITY/STATE/ZIP \_\_\_\_\_

PHONE \_\_\_\_\_

AMOUNT ENCLOSED \$ \_\_\_\_\_

***Please return to the School or Rectory office  
Attention: Alumni Association Quiz Night***

***MAKE CHECK/S PAYABLE TO ST. HILARY SCHOOL***



## **We have a 3 day weekend! Why not enjoy it by buying SCP'S?**

**Bonus Rebate Offers in January: ShutterFly (7%) Jan 17<sup>th</sup> – Jan 30<sup>th</sup>.**

**You can now use your rebate towards reducing your tuition, your book fee, purchase gym uniforms, after school care, or add to your lunch card and as always you can buy more certificates, or donate your rebate to the school which would be used towards the school technology program**

**Remember, no order too Big or too Small. It all goes to benefit our children.**

- ❖ **USE THEM TO SHOP INSTEAD OF CASH, CHECK OR CREDIT.**
- ❖ **ST. HILARY RECEIVES A COMMISSION ON EACH CERTIFICATE SOLD.**
- ❖ **WE WILL SPLIT THAT COMMISSION "50-50" ON YOUR TOTAL PURCHASE FOR EACH QUARTER. IT CAN BE USED TOWARDS TUITION, BUY MORE CERTIFICATES OR DONATE IT TO THE SCHOOL.**
- ❖ **"FACTS" PARTICIPANTS ARE ELIGIBLE FOR ALL THE BENEFITS OF THE SCP PROGRAM.**

**FOR MORE INFORMATION ON SCP\* email  
KATHY ERNST at: [ernst@sthilarychicago.org](mailto:ernst@sthilarychicago.org)**

# CERTIFICATES USUALLY ON HAND:

CERTIFICATE ORDERS RECEIVED BY FRIDAY WILL BE AVAILABLE ON TUESDAY OF THE FOLLOWING WEEK:

## RESTAURANTS:

Burger King (2% rebate)	\$10 ____
Chili's (5.5% rebate)	\$25 ____
Chipotle (5.5% rebate)	\$10 ____
Dunkin Donuts (1.5% rebate)	\$10 ____
I Hop (4%rebate)	\$25 ____
Kentucky Fried Chicken (4.5% rebate)	\$5 ____
Lettuce Entertain You Restaurants (6.5% rebate)	\$25 ____
Lou Malnatis (3.5% rebate)	\$25 ____
Panera Bread (4.5% rebate)	\$10 ____
Olive Garden/Red Lobster (4.5% rebate)	\$25 ____
Panera Bread (4.5% rebate)	\$10 ____
Pizza Hut (4% rebate)	\$10 ____
Starbucks Coffee (3.5% rebate)	\$10 ____
Subway (1.5% rebate)	\$10 ____
Wendy's (2% rebate)	\$10 ____

## SPECIALTY:

AMC-Cineplex-Sony-Lowes Theaters (4% rebate)	\$25 ____
AMC-Cineplex-Sony-Lowes Theaters (4.5% rebate)	\$9 ____
Fannie May (12% rebate)	\$20 ____
I Tunes (1.5% rebate)	\$25 ____
Mobil/Exxon (0.50% rebate)	\$50 ____
Shell Debit Card (1% rebate)	\$25 ____
Shell Debit Card (1% rebate)	\$100 ____
U.S. Postage Stamps 20 @ .49¢ (0% rebate)	8.8 ____

## RETAIL:

Bath & Body Works (6.5% rebate)	\$10 ____
Best Buy (1.5% rebate)	\$25 ____
Carson Pirie Scott (4.5% rebate)	\$25 ____
Claire's (4.5% rebate)	\$10 ____
Dick's Sporting Goods (3% rebate)	\$25 ____
Gordon Food Service (1.5% rebate)	\$25 ____
Home Depot (2% rebate)	\$25 ____
Jewel-Osco (2% rebate)	\$25 ____
Jewel-Osco (2% rebate)	\$100 ____
Lowe's Home (2% rebate)	\$25 ____
Marianos (2% rebate)	\$25 ____
Marshall's/T J Maxx(3.5% rebate)	\$25 ____
Muller Meats (3% rebate)	\$20 ____
Old Navy,Gap,Banana Republic (2% rebate)	\$25 ____
Ross (5% rebate)	\$25 ____
Toy-R-Us (1.5% rebate)	\$20 ____
Walgreens (3% rebate)	\$25 ____
Wal-mart (1.25% rebate)	\$25 ____

## ST. HILARY GIFT CERTIFICATE

CHOOSE THE AMOUNT \$\_\_\_\_\_

CERTIFICATE ORDERS (FROM BOTTOM SECTION) RECEIVED BY FRIDAY WILL BE AVAILABLE ON TUESDAY OF THE FOLLOWING WEEK:

## RESTAURANTS:

	\$10 ____
	\$10 ____
Boston Market (6.5% rebate)	\$10 ____
Buffalo Wild Wings (3.5% rebate)	\$25 ____
Eduardo's Pizza (4% rebate)	\$10 ____
Houlihan's (4% rebate)	\$25 ____
Mrs. Fields Cookies (9% rebate)	\$10 ____
Outback Steakhouse (4% rebate)	\$25 ____
Red Robin (4.5% rebate)	\$25 ____

## SPECIALTY:

Barnes & Noble (4% rebate)	\$10 ____
B P Gas (.50% rebate)	\$50 ____
Chuck E. Cheese (4% rebate)	\$20 ____
Honey Baked Ham (4.5% rebate)	\$25 ____
Hyatt Hotels (4% rebate)	\$25 ____
Oberweis (4.5% rebate)	\$10 ____
Timber Ridge Lodge (4.5% rebate)	\$25 ____

## RETAIL:

Bed, Bath & Beyond (3% rebate)	\$25 ____
Build A Bear (4% rebate)	\$25 ____
Crate & Barrel (3% rebate)	\$25 ____
CVS Pharmacy (2% rebate)	\$25 ____
Eddie Bauer (4.5% rebate)	\$25 ____
Express (5.0% rebate)	\$25 ____
Foot Locker (4% rebate)	\$25 ____
Hair Cuttery (4% rebate)	\$10 ____
J C Penneys (2% rebate)	\$25 ____
Land's End (7% rebate)	\$25 ____
Lane Bryant (4% rebate)	\$25 ____
Mario Tricoci (4% rebate)	\$25 ____
Menard's (1.5% rebate)	\$25 ____
Office Depot (2% rebate)	\$25 ____
Office Max (2.5% rebate)	\$25 ____
Payless Shoes (6.5% rebate)	\$10 ____
Pier 1 Imports (4.5% rebate)	\$20 ____
Pottery Barn/Wm. Sonoma (4% rebate)	\$25 ____
Shutterfly (4.5% rebate)	\$25 ____
Sports Authority (4% rebate)	\$25 ____
Target (1.00% rebate)	\$25 ____
Target (1.00% rebate)	\$100 ____

Please note: When one or more companies are listed together, the certificates are good at either store.

NAME \_\_\_\_\_

ORDER TOTAL \$ \_\_\_\_\_

SEND WITH STUDENT \* \_\_\_\_\_

PHONE NUMBER \_\_\_\_\_

WILL PICK-UP AT SCHOOL \_\_\_\_\_

Please make checks payable to: St. Hilary School

\*PLEASE NOTE: St. Hilary School & its Board cannot be held responsible for any loss that may occur in transit.

Any Questions, Call Kathy Ernst (773) 989-9249.

ROOM # \_\_\_\_\_