



# Saint Hilary School

Where faith, family, and academics thrive!

October 11, 2017

Dear Parent/Guardian,

As the weather turns the flu season will soon be here. Please keep in mind that neither children nor adults are able to focus and learn when they are not 100%. Please allow your child to regain their health and strength before returning to school; this will also help to reduce the spreading of germs to others. Children do need to be fever free for 24 hours before returning to school. We appreciate your cooperation as we continue to keep everyone's safety a top priority.

Today your child will be bringing home their first trimester progress report. Please take some time to review this with your child. We are excited to meet with you over the next two days at our conferences. This is a wonderful opportunity to discuss your child's strengths and ways that we can continue to help them improve. Your child's education and success are possible because of the teamwork between all of us. You will notice that there are no grades for Spanish and computer at this time. Your child will receive grades in both subjects beginning with the 1<sup>st</sup> trimester report card.

Thursday, October 12<sup>th</sup> and Friday, October 13<sup>th</sup> will be our first trimester progress report conferences. We will dismiss at 11:30 am on Thursday and there will be no school on Friday. These conferences are mandatory and **your child is expected to attend**. We are a team and will work together better when everyone is present.

***Friday, October 6<sup>th</sup> marked the halfway point of our first trimester. Please make certain that your financial obligations to Saint Hilary are taken care of in a timely manner. Per board policy, students whose tuition and fees have not been kept up to date by the end of the trimester will be subject to exclusion on Wednesday November 29<sup>th</sup>.***

We are blessed with amazing and dedicated teachers who know that they are here because they have been called to the mission of Catholic education. The National Catholic Educational Association is accepting nominations for those working in Catholic education. Please see the letter in today's envelope for more details on how to nominate someone from St. Hilary School. They are never recognized or acknowledged enough and they should be. Thank you, in advance, for considering your nomination.

Sunday, October 15<sup>th</sup> will be our first Family Mass. Our wonderful 2<sup>nd</sup> and 8<sup>th</sup> graders will be hosting the 10:00 am mass. All 2<sup>nd</sup> and 8<sup>th</sup> graders and their families are expected to attend. Everyone is welcome as we gather to celebrate our faith together. This will also be the Rite of Presentation for all students who will be receiving the sacraments of Reconciliation and Communion this year. Please keep them in your prayers. There will be a mandatory parent meeting for these families immediately following mass in the cafeteria.

### **Thank you:**

Thank you to Mrs. Barros, Mrs. Sedlarz, and Mrs. Figueras, 3 amazing grandmothers who have generously offered to volunteer a couple of days a week to assist with the cafeteria supervision.

### **Help Wanted:**

I am still looking for a full-time person for our cafeteria supervisor position – hours 10:45 – 12:30 Monday – Friday – minimum wage. All compliance paperwork must be in place or started before that day. If you are interested in this position or know of someone who may be please email or call me as soon as possible. This may be a great opportunity for someone retired or a stay at home mom/dad.

Please take a look at the child on the missing children flyer in today's envelope. Kayleigh is a friend of Mrs. Wolf's family. Sharing her picture and information with as many people as possible may help them find her. Thank you.

### **Medical forms:**

All new students to St. Hilary, our preschoolers, kindergartners, and 6<sup>th</sup> graders need to have medical forms completed and these are due by October 15<sup>th</sup>. This is a requirement by the State of Illinois Board of Education. Please get these forms into the office as soon as possible.

### **Contents of this Wednesday's envelope:**

- SCP
- Art club flyers
- Box Top flyers
- Men's Club flyers
- FSA flyers
- NCEA teacher nomination letter
- Taffy Apple flyer
- Christmas wreath flyer
- Missing child flyer

### Mark your calendars:

- Wed. Oct. 11 – progress reports go home
- Thurs. Oct. 12 – Parent – Teacher - Student conferences 11:30 dismissal
- Fri. Oct. 13 – No School Parent – Teacher – Student conferences
- Sun. Oct. 15 – 10:00 Family Mass hosted by 2<sup>nd</sup> & 8<sup>th</sup> grade faith partners  
Reconciliation/Communion candidates Rite of Presentation  
Parent meeting immediately following mass in the cafeteria
- Mon. Oct. 16 – 2<sup>nd</sup> & 8<sup>th</sup> grade faith partner Field Trip to the pumpkin patch
- Tues. Oct. 17 – School Advisory Board meeting 7:00 pm in rectory

Please check out the Peek at the Week for a look at the week ahead.

As always, if you have any questions please feel free to contact me at school 773-561-5885 or by email [donovan@sthilarychicago.org](mailto:donovan@sthilarychicago.org).

Gratefully,

*Mrs. Kathie Donovan*

Mrs. Kathie Donovan, Principal

### #GiveWitnessWednesday

<https://www.facebook.com/StHilaryChicago/>

<https://www.greatschools.org/illinois/chicago/4407-St.-Hilary-School/>

<https://www.yelp.com/biz/st-hilary-school-chicago>

Word of mouth is very powerful, would you please take a moment to write a quick review about St. Hilary on one of the following social media locations:

Facebook, Great Schools, Google, or Yelp.

**Thank you for helping us spread the good news about St. Hilary on  
GiveWitnessWednesday!**



# A Peek at the Week

## WEEK OF October 16 - 20

*St. Hilary...where faith, family, and academics thrive!*

### **MONDAY: October 16<sup>th</sup>**

**Altar Servers: Madison, Jeryl**

- ✓ Religious education classes
- ✓ Yoga class
- ✓ 2<sup>nd</sup> & 8<sup>th</sup> grade field trip to the pumpkin patch
- ✓ Kids Craft Club 3:00 – 3:45
- ✓ Concert band 3:00 – 4:00 pm in Room 109

### **TUESDAY: October 17<sup>th</sup>**

**Altar Servers: Marina, Rianne**

- ✓ Student Council meeting – officers only
- ✓ CODAs 7:10 – 7:45 am in Room 109
- ✓ School Advisory Board meeting 7:00 pm in rectory

### **WEDNESDAY: October 18<sup>th</sup>**

**Altar Servers: Luke, Isabella A.**

- ✓ 8:30 all school liturgy
- ✓ 2:00 dismissal
- ✓ Super soccer 3<sup>rd</sup> – 4<sup>th</sup> grade
- ✓ Cadet band 7:00 – 7:45 am in Room 109

### **THURSDAY: October 19<sup>th</sup>**

**Altar Servers: Christine L., Phuc**

- ✓ Super soccer K – 2<sup>nd</sup> grade
- ✓ Cardinal Choir 3:00 – 4:00 pm in church
- ✓ Concert band 7:00 – 7:45 am in Room 109

### **FRIDAY: October 20<sup>th</sup>**

**Altar Servers: Toni, Sidonie**

- ✓ Art Studio 3:00 – 4:00 pm

### **SATURDAY: October 21<sup>st</sup>**

**Altar Servers: 8:30 a.m. volunteers**

**5:00 p.m. Adhrian, Christopher, Tam (volunteer)**

### **SUNDAY: October 22<sup>nd</sup>**

**Altar Servers: 8 am Lina, Don, A. Okafor**

**10 am Giovanni, Kristoff, Lucca**

**12 pm Camile, Isabella M., volunteer**

ARCHDIOCESE OF CHICAGO CATHOLIC SCHOOLS  
2017/18 SCHOOL YEAR



# KIDS CRAFT CLUB



Children in grades **First through third grade** are invited to join me, Mrs. Rhodes in the Art room Monday afternoons for fun fall crafts. We will meet on the following Mondays:

Monday, October 16  
Monday, October 23  
Monday, October 30  
Monday, November 6  
Monday, November 13  
Monday, November 20

Sessions are from 3:00 to 3:45. To join just fill out and return the form below. Include a fee of **\$25.00** for supplies that will be used during the session. **Slips are due by Monday October 16th.** You can contact me through email at [rhodes@sthilarychicago.org](mailto:rhodes@sthilarychicago.org) if you have any further questions.

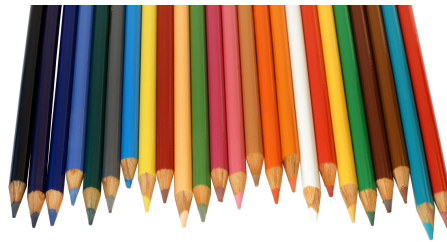
-----  
-

All checks need to be payable to St. Hilary School. Please record Kids Craft Club on the memo or include your cash payment with this slip in an envelope marked Kids Craft Club. Don't forget to include your child's name, grade.

Student \_\_\_\_\_ Grade \_\_\_\_\_

Amount paid \_\_\_\_\_ check # \_\_\_\_\_ or cash \_\_\_\_\_ Date: \_\_\_\_\_

## ART STUDIO



Art Studio begins Friday, October 20th. Art Studio is for students in the 6th-8th grade. This year sessions will be held on Fridays from 3:00 to 4:00. Students may also attend the morning meeting time Wednesdays from 7:10 to 7:40 for no additional cost.

The fee is \$55.00 for the year. This fee covers the use of art materials such as; paper and paint. Your child may also order some additional supplies that they would like to use during the session through Mrs. Rhodes.

Please turn in your permission slip and fee by Friday October 20th. I may have to limit the number of students, based on demand and space in the art room, so it will be on a first come first served basis. Get your form in early to guarantee your spot.

If you have any questions please email Mrs. Rhodes at [rhodes@sthilarychicago.org](mailto:rhodes@sthilarychicago.org).

---

## Art Studio

All checks need to be payable to St. Hilary School and record Art Studio on the memo or include your cash payment with this slip in an envelope marked Art Studio. Don't forget to include your child's name, grade and session they will be attending.

Student \_\_\_\_\_ Grade \_\_\_\_\_

Amount paid \_\_\_\_\_ check # \_\_\_\_\_ or cash \_\_\_\_\_ Date: \_\_\_\_\_



North Park Village  
Nature Center

Harvest Fest

October 14<sup>th</sup> and 15<sup>th</sup>  
5801 N. Pulaski Road



The St. Hilary Men's Club operates a food booth at this festival as a fundraiser. The event runs from 10:00 am – 3:00 pm Saturday and Sunday, but volunteers are needed Friday evening and before and after these hours on Saturday and Sunday. Even an hour or two is greatly appreciated. Contact Daryl McNabb at 773-633-0980 or [damcnabb@sbcglobal.net](mailto:damcnabb@sbcglobal.net) for more information. Service hours are available for students in 7<sup>th</sup> grade and up, as well as adults.



If you can't help out as a volunteer, help out by coming for lunch!





**Hello and greetings from the St. Hilary Men's Club!** Here we are, well into the first month of the new school year, all of us still wondering where the summer went, let alone September!

In any case, with the new school year in full swing, we wanted to take the opportunity to re-introduce ourselves and our mission.

In a nutshell, we exist primarily to subsidize and support the St. Hilary sports program, and through that mission, the school as a whole. We do this by raising money through various fundraising events throughout the academic year, while working closely with St. Hilary's veteran Athletic Director, Joe Kummerer.

In this way, we are able to keep the sports participation fees that families have to pay much lower than they would otherwise be. We can also defray or directly pay for other needed upgrades and expenses. For example, last year we were proud to fully fund the purchase of a new LED-based lighting system for the gym, replacing the worn-out and energy-inefficient old lights, a much-needed improvement.

**So that said, what's on the agenda?** Our next big event is the **Harvest Fest, occurring the weekend of October 14<sup>th</sup> and 15<sup>th</sup> at the North Park Village Nature Center** (5801 N Pulaski Rd, Chicago, IL 60646). Men's Club will be running our usual food tent there, so mark your calendars to come by for some burgers, brats, and other good stuff, while enjoying the fest. **We also need volunteers to help us staff and run the tent – we can't do it all by ourselves, we need your help! For school families, it's a great and fun way for students and parents to earn service credit hours.** We'll have more events throughout the year, so stay tuned.

**A shout out to the Dads - we'll also be having our regular membership meetings every month, which usually occur the third Wednesday of each month, around 7:30pm in the cafeteria** (below the gym). **The next one is Wednesday October 18<sup>th</sup>.** Remember, if you have a kid playing sports, and you've paid your fees, you are automatically a member of the Men's Club, and one of our biggest goals this year is to expand our active membership base. So why not come on by, support the club and lend your voice, enjoy some fellowship and fun, and get complimentary dinner and drinks to boot? If you can find a downside to that, you're looking too hard!

We usually send out postcard reminders before each monthly meeting, so if you'd like to add your address to this list, or to volunteer for Harvest Fest, or just to get more information, please email Mark Habert (membership committee) at [mhabert53@gmail.com](mailto:mhabert53@gmail.com), or text or call me at 773-750-1054.

Thanks for your attention, and go Cardinals!

Mark Habert

Membership Committee - St. Hilary Men's Club

# Student Council is sponsoring an **AFFY TAPPLE SALE!**

We are selling the following items at the following prices:



All apple prices are \$2.50/individuals and \$25.00/case.



A case of pretzels is \$17.00 and individual pretzels are \$1.50.

Please complete the **pre-order** form below and return it to school by **WEDNESDAY, OCTOBER 18TH**. Items will be distributed on Wednesday, October 25.

Thank you for supporting the Student Council!!

-----  
Parent Name \_\_\_\_\_

Child's name and homeroom # \_\_\_\_\_

# of single apples with peanuts \_\_\_\_\_ # of cases (24 apples) \_\_\_\_\_

# of single apples without peanuts \_\_\_\_\_ # of cases (24 apples) \_\_\_\_\_

# of single apples with sprinkles \_\_\_\_\_ # of cases (24 apples) \_\_\_\_\_

# of single caramel and chocolate covered pretzels with sprinkles \_\_\_\_\_

# of cases of pretzels with sprinkles (18 pieces) \_\_\_\_\_

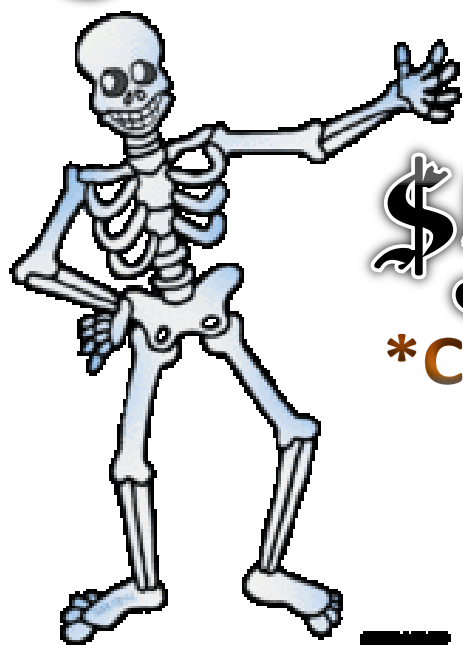
# FSA HALLOWEEN Dance

Friday, October 27

6:00pm-9:00pm

\$5.00 per person

**\*Children 2 and under are free!**



☠️ INCLUDES PIZZA, SALAD, SWEETS AND BEVERAGES

☠️ GUESS THE # RAFFLE ☠️ TAFFY APPLE SALES ☠️ SELFIE STATION ☠️

**NOT A DROP OFF EVENT CHILDREN MUST BE  
ACCOMPANIED BY AN ADULT**

Please return form and fee by October 25<sup>th</sup>. Checks payable to St. Hilary FSA  
Name \_\_\_\_\_

(# of kids \_\_\_\_\_ + # of adults \_\_\_\_\_) X \$5.00 = \$ \_\_\_\_\_ enclosed

**SERVICE HOURS AVAILABLE**

<http://www.signupgenius.com/go/10c094ba4a622a0fe3-fsahalloween>

Contact Florita Barros-Kilroy: [fbkilroyfsa@gmail.com](mailto:fbkilroyfsa@gmail.com) or 773-682-8167

# Lead. Learn. Proclaim. Awards

## Recognize Outstanding Catholic School Educators

NCEA has a longstanding tradition of honoring and recognizing excellence and distinguished service in Catholic school education. We are happy to announce the third annual **Lead. Learn. Proclaim. Awards** that recognize the outstanding efforts, contributions, and achievements on behalf of Catholic school education. This award is for Catholic school educators and administrators, as well as organizations working on behalf of Catholic school education.

[https://www.ncea.org/NCEA/Proclaim/Awards/Lead\\_Learn\\_Proclaim\\_Awards/NCEA/Proclaim/Awards/Lead\\_Learn\\_Proclaim\\_Awards.aspx?hkey=de18e457-eb6c-42a3-a6da-cbedce3e2b22](https://www.ncea.org/NCEA/Proclaim/Awards/Lead_Learn_Proclaim_Awards/NCEA/Proclaim/Awards/Lead_Learn_Proclaim_Awards.aspx?hkey=de18e457-eb6c-42a3-a6da-cbedce3e2b22)

### Lead:

- Exercises responsible decision-making
- Realizes and implements the school's mission and vision
- Works collaboratively toward continuous school improvement
- Actively models service to others within the community
- Demonstrates faithful stewardship of resources
- Engages in responsible financial planning in collaboration with others
- Utilizes outside resources as appropriate to their position to promote operational vitality
- Contributes to long-term planning for continuous improvement to realize the mission of Catholic education

### Learn:

- Supports rigorous academic program that integrates the faith across subject areas
- Collaborates to achieve continuous improvement of instructional practice
- Creatively engages and motivates others to meet the needs of all students
- Demonstrates commitment to personal improvement through professional development and ongoing faith formation
- Guides students in 21st-century skills, including technology integration
- Supports the development of student and family life

### Proclaim:

- Embraces Catholic Identity
- Demonstrates Gospel values
- Adheres to school mission
- Contributes to student and/or adult faith formation
- Participates in liturgical and communal prayer and service
- Promotes the school mission and vision through meaningful communication, marketing and development

## **Box Tops for Education sends St. Hilary cash for each Box Top we submit!**



Please turn in your Box Tops by  
Friday, October 20, 2017.

1. Check the expiration date to make sure your Box Top is valid.
2. Secure to a collection sheet, or gather into a zip top bag.
3. Send to school by October 20<sup>th</sup> so St. Hilary School can sort and submit the Box Tops.





# CHRISTMAS WREATH SALES

## We need your HELP

Last week Friday we sent home our Christmas Wreath booklets and Sales form. This is the Family School Association's biggest fundraiser. We are trying to raise enough money for educational development programs. So this is where we need your HELP! We need you to sell as many Wreaths, Center Pieces, and/or Christmas Trees as you can.

Who doesn't love the fresh smell of evergreens? Don't forget to ask your friends, family, and neighbors. Does your work place or a group organization decorate for the holidays let them know? Any large orders in the local area may be eligible for delivery.

And as always the person with the most sales gets any item of their choice from the book.

If you have any questions contact Kathy  
[Ernst@sthilarychicago.org](mailto:Ernst@sthilarychicago.org)

There will be a display outside the main office during parent/teacher conferences so check them out





### Kayleigh Green



Missing Since: **Oct 3, 2017**  
 Missing From: **Chicago, IL**  
 DOB: **Apr 17, 2002**  
 Age Now: **15**  
 Sex: **Female**  
 Race: **White**  
 Hair Color: **Brown**  
 Eye Color: **Brown**  
 Height: **5'7"**  
 Weight: **160 lbs**

Extra Photo



Both photos shown are of Kayleigh. She may still be in the local area or she may travel to the state of New York. Her ears are pierced. Kayleigh may go by the nickname "Kay." She may have a large pink and white stuffed animal with her. Kayleigh may be in need of medical attention.

**DON'T HESITATE!**

**CALL 911** or  
 1-800-843-5678 (1-800-THE-LOST®)

Case handled by



ANYONE HAVING INFORMATION SHOULD CONTACT

Chicago Police Department (Illinois) 1-312-747-5789

Follow us [Twitter](https://twitter.com/missingkids) [Facebook](https://facebook.com/missingkids) [missingkids.com](https://missingkids.com)



## **FALL IS IN THE AIR! BUY SCP FOR ALL YOUR NEEDS!**

**You can now use your rebate towards reducing your tuition, your book fee, purchase gym uniforms, after school care, or add to your lunch card and as always you can buy more certificates, or donate your rebate to the school which would be used towards the school technology program**

- ❖ **USE THEM TO SHOP INSTEAD OF CASH, CHECK OR CREDIT.**
- ❖ **ST. HILARY RECEIVES A COMMISSION ON EACH CERTIFICATE SOLD.**
- ❖ **WE WILL SPLIT THAT COMMISSION "50-50" ON YOUR TOTAL PURCHASE FOR EACH QUARTER. IT CAN BE USED TOWARDS TUITION, BUY MORE CERTIFICATES OR DONATE IT TO THE SCHOOL.**
- ❖ **"FACTS" PARTICIPANTS ARE ELIGIBLE FOR ALL THE BENEFITS OF THE SCP PROGRAM.**

**FOR MORE INFORMATION ON SCP\* Email  
KATHY ERNST at [ernst@sthilarychicago.org](mailto:ernst@sthilarychicago.org)**



# CERTIFICATES USUALLY ON HAND:

CERTIFICATE ORDERS RECEIVED BY FRIDAY WILL BE AVAILABLE ON TUESDAY OF THE FOLLOWING WEEK:

## RESTAURANTS:

Burger King (2% rebate)	\$10 ____
Chili's (5.5% rebate)	\$25 ____
Chipotle (5.5% rebate)	\$10 ____
Dunkin Donuts (1.5% rebate)	\$10 ____
I Hop (4%rebate)	\$25 ____
Kentucky Fried Chicken (4.5% rebate)	\$5 ____
Lettuce Entertain You Restaurants (6.5% rebate)	\$25 ____
Lou Malnatis (3.5% rebate)	\$25 ____
Panera Bread (4.5% rebate)	\$10 ____
Olive Garden/Red Lobster (4.5% rebate)	\$25 ____
Panera Bread (4.5% rebate)	\$10 ____
Pizza Hut (4% rebate)	\$10 ____
Starbucks Coffee (3.5% rebate)	\$10 ____
Subway (1.5% rebate)	\$10 ____
Wendy's (2% rebate)	\$10 ____

## SPECIALTY:

AMC-Cineplex-Sony-Lowes Theaters (4% rebate)	\$25 ____
AMC-Cineplex-Sony-Lowes Theaters (4.5% rebate)	\$9 ____
Fannie May (12% rebate)	\$20 ____
I Tunes (1.5% rebate)	\$25 ____
Mobil/Exxon (0.50% rebate)	\$50 ____
Shell Debit Card (1% rebate)	\$25 ____
Shell Debit Card (1% rebate)	\$100 ____
U.S. Postage Stamps 20 @ .49¢ (0% rebate)	8.8 ____

## RETAIL:

Bath & Body Works (6.5% rebate)	\$10 ____
Best Buy (1.5% rebate)	\$25 ____
Carson Pirie Scott (4.5% rebate)	\$25 ____
Claire's (4.5% rebate)	\$10 ____
Dick's Sporting Goods (3% rebate)	\$25 ____
Gordon Food Service (1.5% rebate)	\$25 ____
Home Depot (2% rebate)	\$25 ____
Jewel-Osco (2% rebate)	\$25 ____
Jewel-Osco (2% rebate)	\$100 ____
Lowe's Home (2% rebate)	\$25 ____
Marianos (2% rebate)	\$25 ____
Marshall's/T J Maxx(3.5% rebate)	\$25 ____
Muller Meats (3% rebate)	\$20 ____
Old Navy,Gap,Banana Republic (2% rebate)	\$25 ____
Ross (5% rebate)	\$25 ____
Toy-R-Us (1.5% rebate)	\$20 ____
Walgreens (3% rebate)	\$25 ____
Wal-mart (1.25% rebate)	\$25 ____

## ST. HILARY GIFT CERTIFICATE

CHOOSE THE AMOUNT \$\_\_\_\_\_

CERTIFICATE ORDERS (FROM BOTTOM SECTION) RECEIVED BY FRIDAY WILL BE AVAILABLE ON TUESDAY OF THE FOLLOWING WEEK:

## RESTAURANTS:

	\$10 ____
	\$10 ____
Boston Market (6.5% rebate)	\$10 ____
Buffalo Wild Wings (3.5% rebate)	\$25 ____
Eduardo's Pizza (4% rebate)	\$10 ____
Houlihan's (4% rebate)	\$25 ____
Mrs. Fields Cookies (9% rebate)	\$10 ____
Outback Steakhouse (4% rebate)	\$25 ____
Red Robin (4.5% rebate)	\$25 ____

## SPECIALTY:

Barnes & Noble (4% rebate)	\$10 ____
B P Gas (.50% rebate)	\$50 ____
Chuck E. Cheese (4% rebate)	\$20 ____
Honey Baked Ham (4.5% rebate)	\$25 ____
Hyatt Hotels (4% rebate)	\$25 ____
Oberweis (4.5% rebate)	\$10 ____
Timber Ridge Lodge (4.5% rebate)	\$25 ____

## RETAIL:

Bed, Bath & Beyond (3% rebate)	\$25 ____
Build A Bear (4% rebate)	\$25 ____
Crate & Barrel (3% rebate)	\$25 ____
CVS Pharmacy (2% rebate)	\$25 ____
Eddie Bauer (4.5% rebate)	\$25 ____
Express (5.0% rebate)	\$25 ____
Foot Locker (4% rebate)	\$25 ____
Hair Cuttery (4% rebate)	\$10 ____
J C Penneys (2% rebate)	\$25 ____
Land's End (7% rebate)	\$25 ____
Lane Bryant (4% rebate)	\$25 ____
Mario Tricoci (4% rebate)	\$25 ____
Menard's (1.5% rebate)	\$25 ____
Office Depot (2% rebate)	\$25 ____
Office Max (2.5% rebate)	\$25 ____
Payless Shoes (6.5% rebate)	\$10 ____
Pier 1 Imports (4.5% rebate)	\$20 ____
Pottery Barn/Wm. Sonoma (4% rebate)	\$25 ____
Shutterfly (4.5% rebate)	\$25 ____
Sports Authority (4% rebate)	\$25 ____
Target (1.00% rebate)	\$25 ____
Target (1.00% rebate)	\$100 ____

Please note: When one or more companies are listed together, the certificates are good at either store.

NAME \_\_\_\_\_

ORDER TOTAL \$ \_\_\_\_\_

SEND WITH STUDENT \* \_\_\_\_\_

WILL PICK-UP AT SCHOOL \_\_\_\_\_

PHONE NUMBER \_\_\_\_\_

Please make checks payable to: St. Hilary School

\*PLEASE NOTE: St. Hilary School & its Board cannot be held responsible for any loss that may occur in transit.

Any Questions, Call Kathy Ernst (773) 989-9249.

ROOM # \_\_\_\_\_