

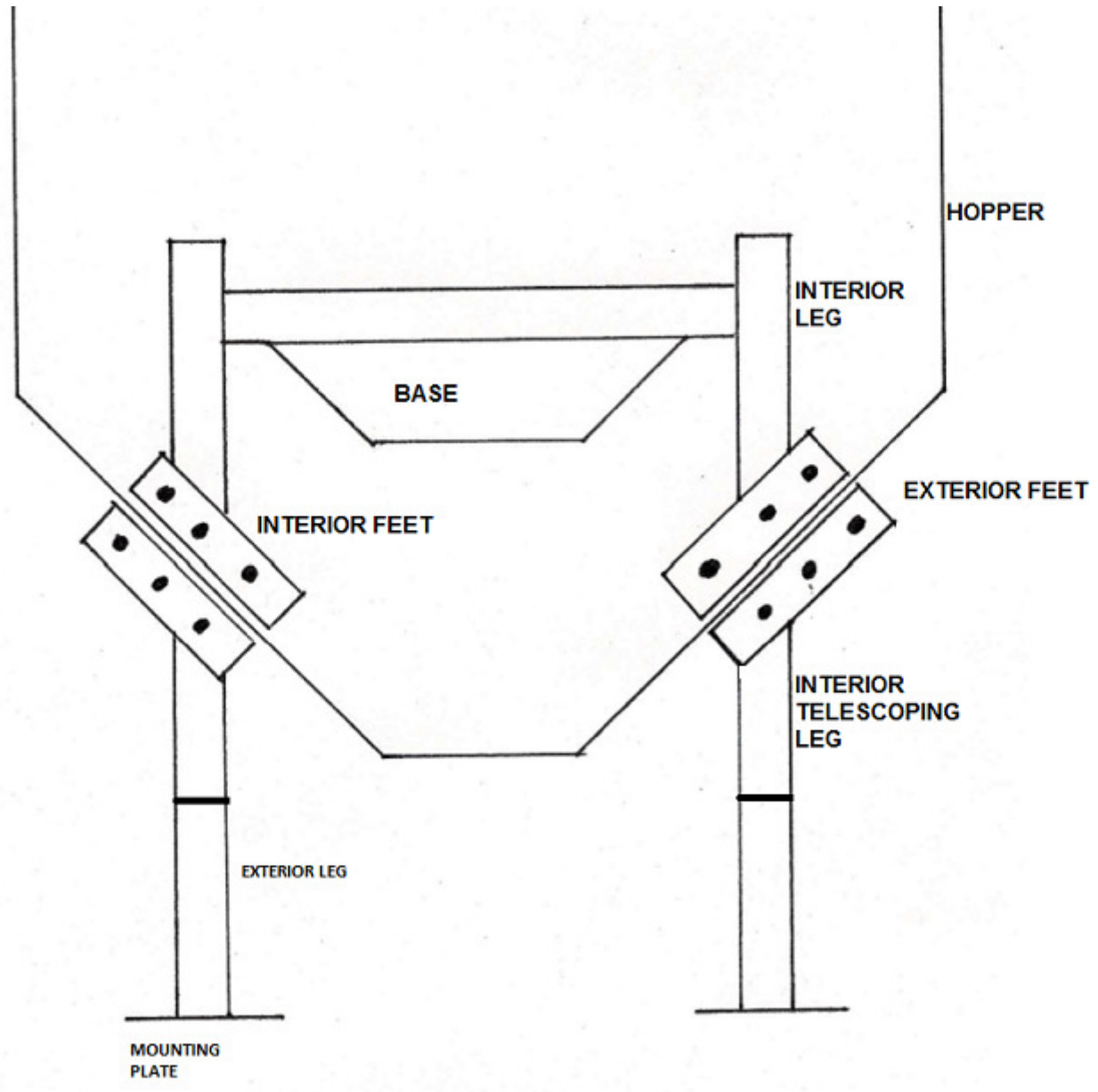
BIN LADDER INSTALLATION WITH UB BASE

Outside Leg Supports

Note that the outside legs have an interior part and an exterior part that sleeve together.

- 1) BOLT OUTSIDE FEET TO THE INSIDE FEET. (SANDWICHING THE HOPPER).**
- 2) BOLT INTERIOR TELESCOPING LEGS TO THE OUTSIDE FEET USING THE BOTTOM HOLE.**
- 3) SLIDE EXTERIOR TELESCOPING LEGS OVER INTERIOR TELESCOPING LEGS.**
- 4) CENTER EXTERIOR LEGS ON MOUNTING PLATES.**
- 5) PLUMB OUTSIDE LEGS.**
- 6) ANCHOR MOUNTING PLATES TO CONCRETE.**
- 7) WELD EXTERIOR LEGS 100% TO MOUNTING PLATES.**
- 8) WELD INTERIOR TELESCOPING LEGS TO EXTERIOR LEGS 100%.**
- 9) WELD INTERIOR TELESCOPING LEGS TO OUTSIDE FEET 100%.**
- 10) IF YOU HAVE ANY QUESTION CALL THE FACTORY AT 574-583-3883 OR FAX 574-583-3861**
- 11) OUTSIDE LEG SUPPORTS INSTALLED INCORRECTLY WILL CAUSE THE LADDER TO COME DOWN.**
- 12) AMOS AgMachinery, LLC, 888-246-2713 or doc@amos-agmachinery.com**

BIN LADDER INSTALLATION WITH UB BASE



WELD ALL CONNECTIONS 100%