

# 2014 BEXLEY STATE OF THE COMMUNITY





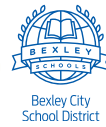
# STATE OF THE CITY OF BEXLEY



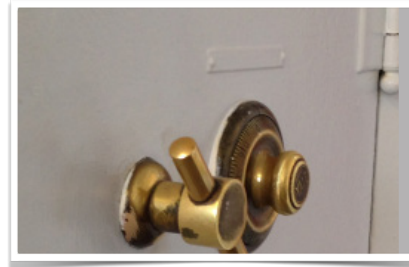
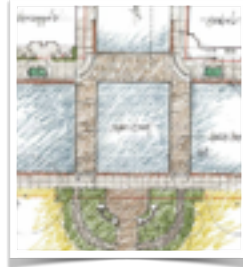
BEXLEY  
COMMUNITY FOUNDATION



Capital  
University  
Ask. Think. Lead.



# 2013: REWIND



2014 BEXLEY STATE OF THE COMMUNITY

2013 saw plenty of good things in Bexley:

- The Main Street streetscape
- The Main Event was a huge success
- We balanced our budget for this first time since the loss of the Estate Tax and the reductions to the local government fund; we ended the year with a surplus!
- Executed contracts to redevelop City Hall site into a Giant Eagle Market District
- Became the world's first City to be an arboretum
- Deployed new police and accounting software

## 2014: CITY HALL REDEVELOPMENT



### 2014 BEXLEY STATE OF THE COMMUNITY

- In 2013, The City of Bexley, through the Bexley Community Improvement Corporation (CIC), went into contract with Continental Real Estate and Giant Eagle
- City Hall and the City Service Garage will move off-site to the same area as the Police station, the existing buildings will be demolished, and the site will be redeveloped with a Giant Eagle Market District Express.
- This is an up-market, neighborhood grocery store concept. There's a market district in Upper Arlington that gives you a feel for the quality of this concept. This version will be smaller and scaled to fit our neighborhood feel.



## 2014: CITY HALL REDEVELOPMENT



2014 BEXLEY STATE OF THE COMMUNITY

These photos are from the first Market District Express that opened in 2013 in an upmarket neighborhood of Pittsburgh.

# 2014: CITY HALL REDEVELOPMENT

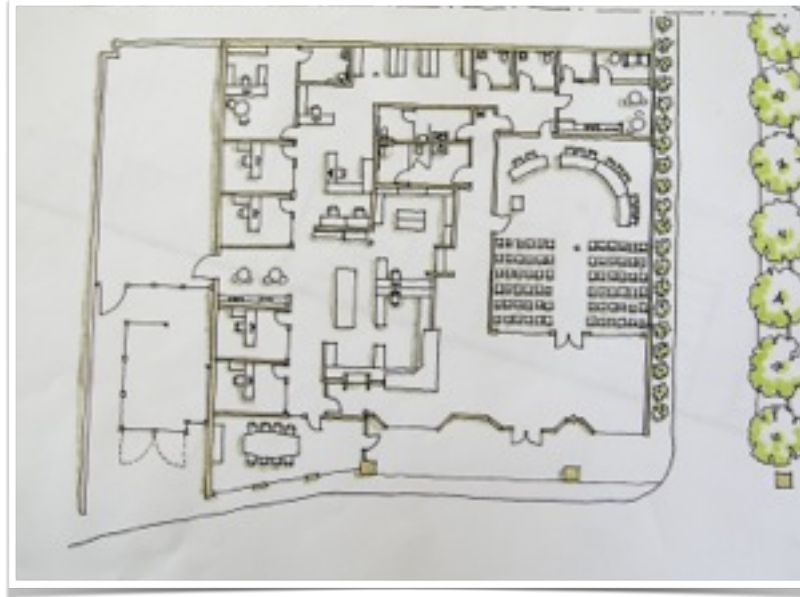


2014 BEXLEY STATE OF THE COMMUNITY

In order to redevelop our site, we have to move! The good news is, this relocation is costing the taxpayers of Bexley \$0.

- We have until the end of this year to move.
- City Hall is moving to the former Monk/Barrell 44 space.
- An access drive is being cut through Bexley Square to provide access to the light from the Giant Eagle space. City Hall will be completely detached from the rest of Bexley Square.

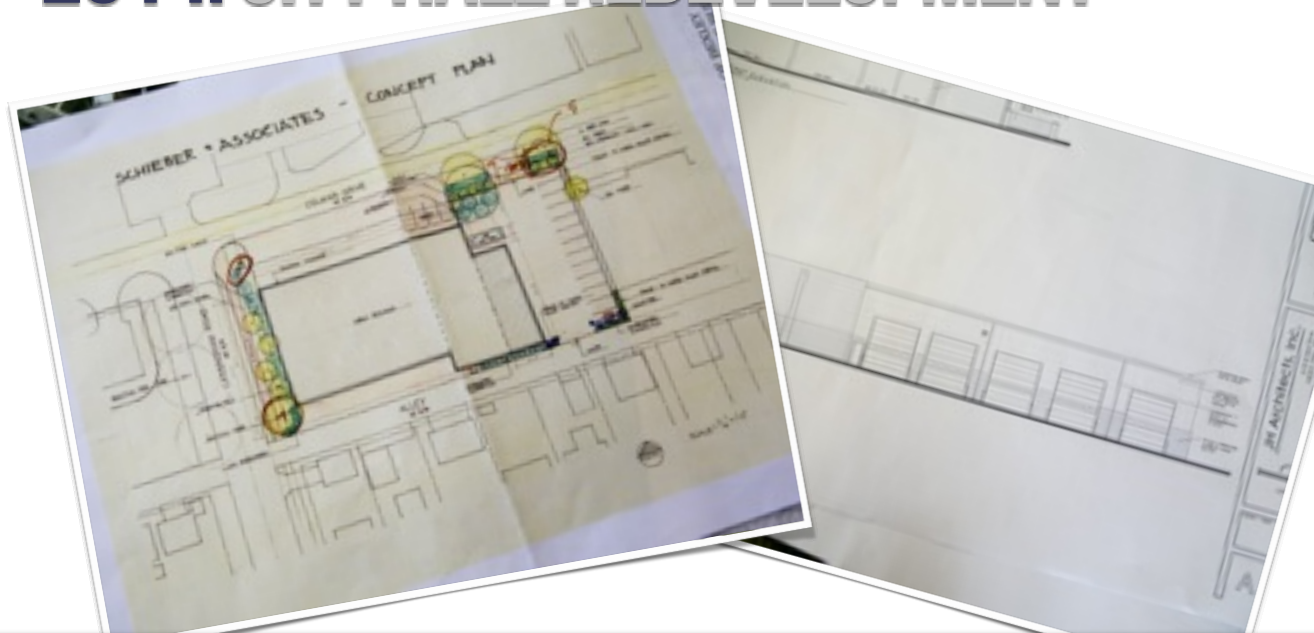
# 2014: CITY HALL REDEVELOPMENT



2014 BEXLEY STATE OF THE COMMUNITY

- City Hall will be smaller, more of a collaborative working environment
- Council chambers will be approximately 20% larger than current
- We will have a community meeting room accessible after hours
- Today, City Hall is about 40% dead-end hallways. This is an efficient, collaborative work environment, and we're really excited to get into the new space.

# 2014: CITY HALL REDEVELOPMENT



2014 BEXLEY STATE OF THE COMMUNITY

## Service Garage:

- Moving to Delmar and Cassingham – across from the Police Department – former Ci Bon's facility
- We're reusing 8,000 SF of building area, and adding on a 10,000 SF maintenance garage
- Lowered costs, increased efficiency of floor plan, great location for our needs

# 2014: SAFETY INITIATIVES



## 2014 BEXLEY STATE OF THE COMMUNITY

- Continuing to implement programs to make Bexley safer, more secure, and more informed
- Communication is a focus – we are striving to be more open and provide more information, and also to put crime in context. And so you'll see more interaction between our department and social networks, as we help to get good information out that is helpful to residents, and also work to dispel false information being propagated.
- Emphasis on awareness, CALL 559-4444!
- Block watch programs
- Citizens Police Academy
- New initiatives to free up police time from paperwork and keep them on the streets
- Generally speaking, theft is the largest challenge we have in combatting crime, and we are rolling out several unique and innovative programs to help detect theft in the community and alert our department when it is happening.



# 2014: LIVINGSTON AVENUE



2014 BEXLEY STATE OF THE COMMUNITY

- We can't talk about safety without talking about Livingston Avenue.
  - In the far southwest corner of the City, the streets of Ferndale and Mayfield have some stunning statistics.
    - In this area, residents are 4.5x more likely to be perpetrators of crime, and they are about 3.9x more likely to be victims of crime.
  - The challenges we face in trying to turn this tide are manifold.
    - The majority of the units on these streets are constructed on top of 7' to 12' of former landfill. So, infrastructure work we do there tends not to last long, as rolling and settling is continuously occurring on our streets. And as you would imagine, structural issues also result in issues for the housing itself.
    - This area, as troubled as it is, also provides a good source of affordable housing for families who want to live in Bexley. We need to find a way to turn this area around, but still maintain affordable housing options so that we aren't displacing a part of our community.
    - There are so many property owners that it is difficult to work with owners to help raise standards and improve conditions.
  - Today, we still have a lot of questions, but we are also getting to some answers. We have been working, with Bexley City Council and the Bexley CIC, on various redevelopment concepts, and I believe that there is a will to improve this area of the City, and that collectively we will find a way.
  - Improving the Livingston corridor generally, and Ferndale and Mayfield specifically, is one of the major projects I will be working on over the coming years, and I ask all of you to partner with us in helping to create a new condition in the area that brings a higher level of safety and security to Bexley, and also helps to maintain the availability of affordable housing options for our community.

# 2014: FIBER

2014 BEXLEY STATE OF THE COMMUNITY

Bexley is partnering with Gahanna and Whitehall to bring fiber and access to OARNet to our main corridors. Last month, we learned that we obtained \$1,000,000 in state funding to make this possible. Bringing fiber to Bexley opens up a lot of possibilities, not least of which is faster and cheaper access to data for our major stakeholders, including all the institutions represented in this room tonight. We're finalizing the details, but expect to be hearing more about the fiber project over the coming year.

# 2014: STREETSCAPE UPDATE



2014 BEXLEY STATE OF THE COMMUNITY

Speaking of Main Street –

- Wrapping up the streetscape project and starting the traffic signal upgrades project
- Brick crosswalks to be added at Cassady and Main, and completed at Roosevelt and Main
- New streamlined signage currently being installed
- Rest of street fixtures will be repainted to black. Now Main Street has its own signage package that sets it apart from other areas of the City.



# 2014: STREETSCAPE UPDATE



2014 BEXLEY STATE OF THE COMMUNITY

Did I mention flower baskets? Yes – in about a month, you’re going to see some fantastic flower baskets on Main Street, and new ones at the Broad Street bridge.

Thank you, Bexley Beautification Fund!

# 2014: INFRASTRUCTURE PROJECTS



2014 BEXLEY STATE OF THE COMMUNITY

Major infrastructure projects in 2014 include:

- wrapping up Main Street
- NEQ – OPWC grant and 0% loan program to replace water lines and reconstruct streets – affects portion of Delmar, Allegheny Avenue, Bellwood Avenue, and Columbus Avenue
- Resurfacing streets – streets slated for resurfacing include Cassingham between Main and Fair, and Powell Avenue between Dawson and Gould.
- Pothole work and patch work begins over the next couple of weeks

# 2014: ARBORETUM UPDATE



2014 BEXLEY STATE OF THE COMMUNITY

In 2013, Bexley became the first City arboretum.

In 2014, we're formalizing our arboretum programming, so that we really deserve and develop this designation.

How you'll see this:

- Labeling of arboretum trees. All 133 species. Rolling this labeling out as we expand our “tree walk”. The first tree walk is being labeled in time for arbor day on April 25th. An online map and information on the arboretum trees will be available by visiting [www.bexleyarboretum.org](http://www.bexleyarboretum.org).
- Educational programming. Maple syrup workshops was one example of programming. In a couple of months we are going to have a sawmill workshop, where we learn how to “recycle” street trees that needed to be removed. The plan is to use the product of the sawmill workshop for some innovative wood trim features in the new City Hall development. We're working with schools in Bexley to build an arboretum curriculum – if you'd like to get involved let us know.
- Expanding our current database. We're making the move to GIS, so that we can map and better track maintenance on the 14,000+ trees that are part of the Bexley arboretum catalogue, and our hope is to bring this data online in the future.

# 2014: MAIN EVENT

May 16- Muppets

June 19- Wall-E

July 18- Star Wars

August 15- Viewer's Choice!

September 19- Wizard of Oz



2014 BEXLEY STATE OF THE COMMUNITY

Now for the fun stuff!

- Main Event is coming back in 2014
- Committee is already hard at work
- We have a great lineup this year, and a great list of sponsors.
- First off – we could not have remotely done this or so many of the other things we're talking about without the earth-shattering support of the BCF.
- The community has really rallied around this concept – support from
  - FBB, Chamber of Commerce, Wasserstrom, Glimcher family, Waggenbrenner Realty, Yard Barbers, Morgan Stanley, Gledhill Robbins Talis, Hamilton Parker, Heartland Bank, and others!
- This year we will have more programming, more music, more food, and as we heard tonight, our very own very high definition equipment for a great experience and a great community event
- There are so many people that have pulled this series together. But a gigantic, tremendous, over-the-top thanks goes to Lori Ann Feibel, who is chairing this event for the 2nd year in a row, and her energy, enthusiasm, and hands-on leadership has allowed this event to happen.

## 2014: RECREATION & PARKS



2014 BEXLEY STATE OF THE COMMUNITY

- Focus to increase park space – on several fronts. Better use of existing space, search for expansion space
- Alum Creek – plan process wrapped up and now on to phased development



## 2014: RECREATION & PARKS



2014 BEXLEY STATE OF THE COMMUNITY

- Pool upgrades include a new birthday tent, new bike racks
- Improvements to the Jeffrey grounds – continue front entrance improvements
- Improvements to the mansion – our goal is to open up additional programming space at Jeffrey Mansion and we're continuing to work on that

## 2014: RECREATION & PARKS



2014 BEXLEY STATE OF THE COMMUNITY

- Pool upgrades – new birthday tent, new bike racks
- Improvements to the Jeffrey grounds – continue front entrance improvements
- Improvements to the mansion – our goal is to open up additional programming space at Jeffrey Mansion and we're continuing to work on that

## 2014: RECREATION & PARKS



2014 BEXLEY STATE OF THE COMMUNITY

- And who knows what else? Market research is very strenuous for us, and we're always putting aside our own idea of what's fun to explore new programming opportunities... It's a lot of work, but somebody has to do it...



# 2014: BRANDING



**Bexley Celebrations**

**2014 BEXLEY STATE OF THE COMMUNITY**

Now. Let's talk about our community branding project.

- A quick refresh: WAY WAY WAY back in 2012 six organizations in Bexley received BCF funding to work on a cooperative community branding initiative.
- The concept was simple: let's try to form some cohesive identity so that we present a united front to both residents and those outside of our community
- So, here's where we are today...
- Turns out, the project wasn't so simple. Lots of different identities, disparate visual history, and the added complexity of a committee environment for moving forward with the project with lots of stakeholders behind the scenes.



But we did it!

And what does it look like?



2014 BEXLEY STATE OF THE COMMUNITY

common aesthetic and shared typologies:  
simple, basic – classic  
leaves  
structural elements  
alluding to past/heritage  
thinking forward



2014 BEXLEY STATE OF THE COMMUNITY



Bexley City  
School District



Bexley  
Public Library



Bexley Area Chamber  
of Commerce



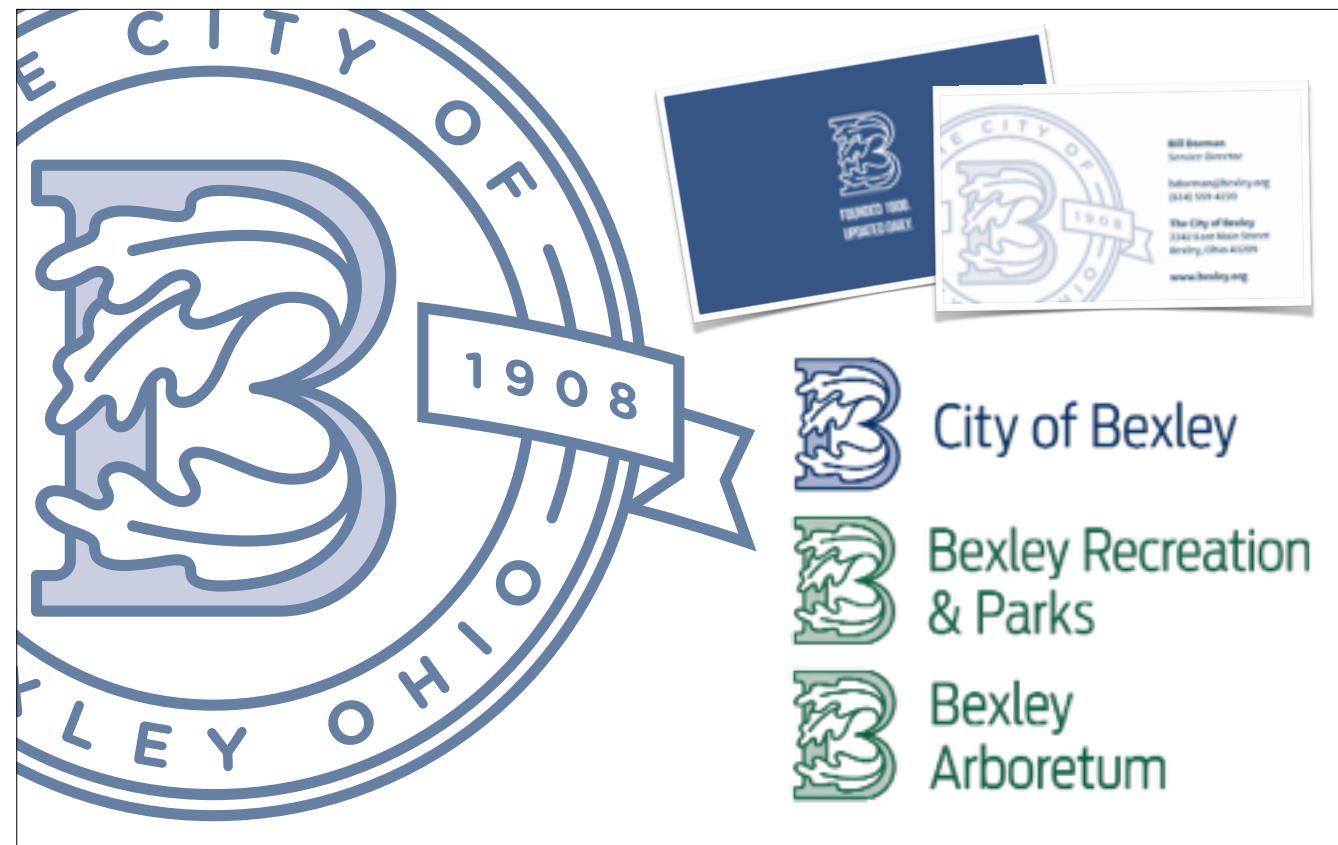
Bexley  
Women's Club





Bexley Celebrations  
Association





And this is a flexible design. Color fill, reverse color, and implementation across various branches of the City, in this example.

# ONE TREE: MANY BRANCHES



2014 BEXLEY STATE OF THE COMMUNITY

Here's a screenshot of our website today. Our branding is live, and we'll be working on implementing this refined identity across our departments.

# LET'S KEEP IN TOUCH



## 2014 BEXLEY STATE OF THE COMMUNITY

What we covered today, in all organizations, is just a small snapshot of what is happening in 2014. Keep in touch! Here are some of the ways we keep residents up to date. Our primary, week-by-week point of contact is the Bexley Blast. Sign up online today at [www.bexley.org/blast](http://www.bexley.org/blast).

# 2014 BEXLEY STATE OF THE COMMUNITY

Thank You!



BEXLEY  
community foundation



Capital  
University  
Ask. Think. Lead.

