

# Laboratory Managers Conference 2007



19 – 21 November 2007

Presidential Ballroom  
Sebel Hotel  
King George Square, Brisbane

- **Learn** latest thinking in laboratory management
- **Improve** your laboratory's performance
- **Network** with other laboratory managers
- **Discover** new productivity tools at the Trade Exhibition
- **Optional** 1-day workshop sessions
  - Effective Management of Laboratory Assets **OR**
  - Navigating the Regulatory Minefield and Modern Workplace Issues for Managers

Principal sponsor



Sponsor



# Laboratory Managers Conference 2007

## Presidential Ballroom Sebel Hotel King George Square, Brisbane

### Conference Overview

Science Industry Australia is proud to present the second Laboratory Managers Conference 19th to 21st November 2007 at the Sebel Hotel, King George Square, Brisbane.

This two-day conference, which will be preceded by a choice between two optional, concurrently held, one day workshops, will feature a group of top international, interstate and local speakers, all of whom are highly experienced in specific elements of laboratory management or laboratory service delivery.

The conference content will be of relevance to all people who are involved in laboratory management. The program is relevant to all research, educational and industrial quality control laboratories.

Numbers are limited to ensure maximum interaction between attendees during lunch and coffee breaks. A conference dinner will provide additional networking opportunities and a chance to talk informally with many of the speakers and trade exhibitors.

### Conference Themes

Science Industry Australia Inc. has assembled a top range of local and international speakers, who will present on the following themes:

#### *People Management:*

- Finding and retaining staff
- Management roles
- Workforce changes

#### *Business Management & Service Provision:*

- Continuous Development
- Quality Practices
- Equipment considerations

#### *Regulatory & Safety Management:*

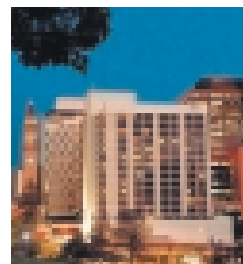
- Regulatory Requirements
- Safety Culture
- Hazard Zones

### Conference Dinner

A Conference Dinner will be held at the Hotel from 7.00pm for 7.30pm start on Tuesday 20th November. Dr Allan Paul from DSTO who holds patents for scramjet engines will be the entertaining dinner speaker

The registration fee for the Conference includes a ticket for the dinner which will also be attended by the trade exhibitors.

Additional tickets are available at \$120 per person which includes pre-dinner drinks, three course dinner, wine, beer and soft drinks.



### Trade Exhibition

The Conference will be supported by a trade exhibition that will be staged immediately outside the conference hall and will run for two days (20th and 21st November). The exhibition booths are offered exclusively to Science Industry Australia member companies and a small number of invited organizations.

Delegates will be able to view the latest productivity and analytical tools. All exhibitors are members of SIA and are committed to keeping your laboratory up-to date with the latest in techniques, tools and services.

## Optional One Day Workshops – 19th November 2006

### OPTION 1

#### **Effective Management of Laboratory Assets**

This one day workshop takes a strategic view of the management of laboratory assets in the context of current quality philosophies to determine options for achieving best practices. It examines the scope of asset management, the issues surrounding each element, and current literature around the various options for executing each function. The intent is to provide participants with the rationale behind each of the options to allow them to make objective decisions as to which of the approaches will work best in their own labs to increase productivity and efficiency. The workshop is designed for current or future managers who are seeking innovative ways to lower their operating costs while maintaining or improving the productivity of their assets.

Key topics

- Lab manager's role and responsibilities in asset management
- Laboratory inventory, environment and facilities
- Disposal/retirement/obsolescence
- Management of change
- Performance measures
- Drivers in asset management
- Disaster recovery
- Asset acquisition process
- Successful outsourcing

Practical details of laboratory asset management such as instrument calibration, maintenance options, validation and quality requirements, HSE considerations, and so forth will be discussed with emphasis on systematic approaches and helpful tools. Workshop participants are expected to share their experiences and best practices.



**Workshop Leader:** Dr. Wayne Collins managed the laboratories of Solvay Polymers in Deer Park, Texas for 24 years prior to joining Thermo Fisher Scientific as Laboratory Services Consultant in 2005. Experiences with Solvay in adopting and implementing quality principles as part of a change process have been chronicled in over 50 articles and presentations on laboratory management. Wayne served as the President of ALMA for the year 2000, is the current Editor of *Managing the Modern Laboratory*, is a member of the editorial board of *Lab Manager Magazine* and was the recipient of the 2006 Distinguished Service Award for Laboratory Management sponsored by Agilent Technologies.

### OPTION 2

#### **Navigating the Regulatory Minefield and Modern Workplace Issues for Managers**

This workshop will spend the morning looking at all the regulations and issues that the modern laboratory manager should know about. Learn where to access assistance and what you need to do to keep your laboratory on the straight and narrow.

**Workshop leader:** Dr Terry Spencer has spent many years managing laboratories and is a former Government analyst. Currently he chairs the Science Industry Action Agenda Regulatory Working Group and spends his time in Canberra making submissions to change the more onerous regulations affecting laboratories

The afternoon will look at issues affecting managers in the workplace in relation to people management.

The workshop will include:

- Basic supervisory skills
- Managing or Leading?
- Dealing with sexual harassment
- Bullying in the workplace – a bigger issue than you think
- Managing the counselling and disciplinary process

**Workshop Leader:** Judith Himstedt holds a Master of Public Sector Management and a Bachelor of Commerce – majoring in Industrial Relations and Human Resource Management. Judith's strong business background and experience in contemporary human resource management, industrial relations, leadership, and learning and development was gained as Workplace Relations Manager at Commerce Queensland, where she led a team of 24 legal, industrial and HR practitioners and advocates.

### Confirmed Conference Speakers

TITLE	SPEAKER	AFFILIATION
Finding and Retaining Good Laboratory People	Wayne Collins	Laboratory Services Consultant
What Great Managers Do Differently	Gabrielle Droulers	Centre for Career Development, Sydney
Changing Roles in Private Health Laboratories	Tony Badrick	Sullivan & Nicolaidis Pathology Laboratories, Brisbane
Workforce Shift from Baby Boomers to Gen Y	Lucia Kelleher	S-Quotient Pty Ltd, Melbourne
Roles of Managers in Public Health Laboratories	Dr John Gollogly	Queensland Health & Pathology Services, Brisbane
Floor Managers, the Key to Reducing the Burden of Compliance	Dr Stephen Love	The Australian Institute for Bioengineering and Nanotechnology, Brisbane
Regulation - Biosafety Considerations	Jane Easton	University of Queensland
Regulation - The Role of AQIS	Sally Grimes	AQIS Animal and Plant Quarantine Branch, Sydney
Accident Investigation & Review	Gary Chaplin	Occupational Health and Safety, University of Queensland
Developing & Maintaining a Changing Safety Culture	Angela Seidel	Goodman Fielder Pty Ltd
Incident Response and Investigation - a Case Study	Paul Barton	Monash University, Melbourne
Hazard Zones - Assessment and Treatment	Frank Mendham	Bassett Consulting Engineers, Brisbane
Equipment Maintenance Overview	Andrew Newbury	LSE, Brisbane
Accrediting R&D Laboratories	Jane King	NATA
Equipment Procurement	Derek Brown	Quantum Scientific
Biological Safety Cabinets: The Primary Barrier	Ron Rogers	Gelaire Pty Ltd
Six Sigma	Garth Rymer	SMS Management and Technology
LEAN	Yoel Mittelberg	Vision Biosystems Pty Ltd

# Laboratory Managers Conference 2007



## Registration Form and Tax Invoice

This document is your receipt for GST purposes when you make your payment.

ABN 61 792 378042

### Complete and return

By Email  
sia@scienceindustry.com.au

By Fax  
+61 (0)3 9872 5566

By Mail with payment to:  
Science Industry Australia  
P O Box 337  
Hawthorn VIC 3122 Australia

Please photocopy if more than one delegate attending  
**Early bird rate closes 5 October 2007**

### Delegate Details

### Date:

Name: .....  
Job Title: ..... Email: .....  
Company/Institution Name: .....  
Company/Institution Address: .....  
Suburb: ..... State: ..... Post Code: .....  
Phone : ( ) ..... Mobile : ..... Fax: ( ) .....

**Conference Fee** (All prices include conference dinner, all lunches, coffee breaks and GST)

ALMA members Early Bird Rate (before 5th October 2007)	\$845.00	\$ .....
Non-member Early Bird Rate (before 5th October 2007)	\$995.00	\$ .....
ALMA members Normal Rate (after 6th October 2007)	\$1030.00	\$ .....
Non-members Normal Rate (after 6th October 2007)	\$1180.00	\$ .....

**Conference + One Workshop Fee** (All prices include conference dinner, all lunches, coffee breaks and GST)

*"Effective Management of Laboratory Assets"*

**OR**

*"Navigating the Regulatory Minefield and Workplace Issues for Managers"*

ALMA members Early Bird Rate (before 5th October 2007)	\$1445.00	\$ .....
Non-member Early Bird Rate (before 5th October 2007)	\$1695.00	\$ .....
ALMA members Normal Rate (after 6th October 2007)	\$1700.00	\$ .....
Non-members Normal Rate (after 6th October 2007)	\$1950.00	\$ .....

**Join ALMA today and receive ALMA member discounted rates** \$350.00 per annum \$ .....

**Extra Conference Dinner Tickets** \$120.00 x .....Attendees = \$ .....

(One free ticket per delegate)

**TOTAL PAYABLE = \$ .....**

For accommodation requirements contact Stacey Thomas-Appleton at the Sebel and Citigate Hotel, King George Square, Brisbane on 07 3229 9111 ext 40711 Email: Stacey\_thomas-appleton@mirvac.com.au

### Payment Details: CREDIT CARD ( Visa or MasterCard only )

Card Number

Name on Card: ..... Expiry date .....

Cardholder signature: .....

CHEQUE Payable to Science Industry Australia Inc. and mailed to: Science Industry Australia, P.O. Box 337, Hawthorn VIC 3122

### Cancellation Policy

Your registration will be confirmed in writing when full payment has been received. We will refund your registration in full, less \$150 administration fee if notification is received in writing of cancellation by 5th October 2007. If written notification is received between 6th October and 2nd November 2007, you will receive a 50% refund and conference documents. No cancellation requests will be accepted after 3rd November 2007. A replacement attendee is acceptable, but no refund will be made. The organizer reserves the right to amend/change the program, venue, speaker replacements and/or topics, if warranted by circumstances beyond its control.