

TAHAWUS CENTER presents
ADIRONDACK PLEIN AIR with ENID BRAUN
Workshop - August 7-12, and Windows Gallery Exhibit - August, 2016



CREATE FINISHED PLEIN AIR LANDSCAPE PAINTINGS in the beautiful Northern Adirondack surrounded by spectacular mountains, rivers, and historic town scenes. This 5-DAY WORKSHOP features daily sessions, 10-4pm, followed by group gathering at the Tahawus Center to discuss the day's work. All levels are welcome. Pastel, acrylic, and other water-based and mixed media invited. Space is limited to 15 participants.

TAHAWUS CENTER, Windows Gallery is home base and inclement weather location: 14234 Main St, 2nd Fl, Au Sable Forks, NY. (32 minutes from Plattsburgh and Lake Placid)

INSTRUCTOR, ENID BRAUN, (BFA, Painting, San Francisco Art Institute, MFA Pratt Institute. Visiting Artist Brooklyn Navy Yard) Suitable for beginners or more experienced students, this workshop is aimed at developing each participant's unique perspective on the world through individualized attention for the work-in-progress. Formal concepts and tools for composition such as value (light and dark), color mixing, and how to accurately measure scale will be introduced as needed.



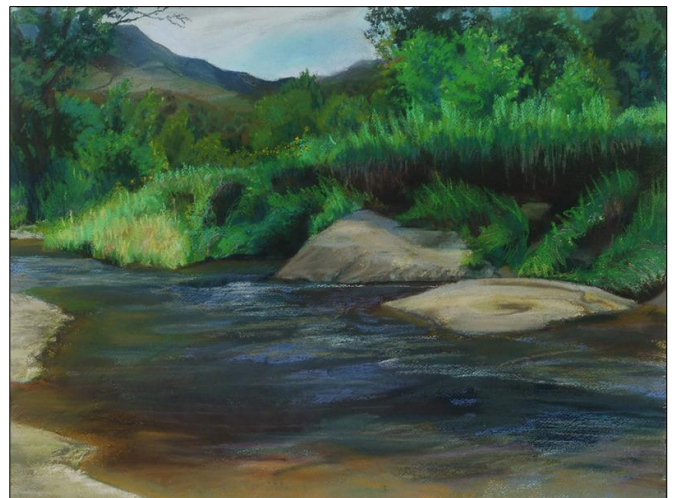
DESCRIPTION

- Participants will make initial sketches to get hand and eye working together and learn how to use thumbnail sketches as the basis for potential compositions.
- Field sessions include midday group critique with lunch break and conclude each day with a group review and gathering at **Tahawus Center** to see and learn from one another's work.
- Participation in an exhibit including 2 works (one of which could be a previously completed, framed work brought to the Workshop.) The concluding 2-week exhibit opens August 12, at the Windows Gallery, Tahawus Center.

REGISTRATION Feb 1-May 1: \$50 deposit payable to the Tahawus Center (winter address: Appleby Foundation, 579 Broadway, 4B, NY, NY 10012. Provide *self-addressed return envelope* for registration and information packet.

FEE \$600 Full payment DEADLINE is June 1, 2016 (NOTE: includes 5 brown bag lunches, 1 group dinner)

HOUSING: in range of \$65-100/night, with some week-long discount option). A short list with accommodations in scenic locations of local AirB&Bs and dining choices is supplied for participants - (Range from 2-min walk to 24-min drive to Tahawus Center, Au Sable Forks). **NOTE:** To secure favorable nearby housing, participants are urged to reserve by very early spring.



"Gihon River" Enid Braun

Regional Tuition Assistance, and Day Rates for participation available.

CONTACT: TahawusCenter@gmail.com, enidbraun@earthlink.net

Tahawus Center, 14234 Rt. 9N, Main Street; Summer mailing address: PO Bo 984, Au Sable Forks, NY 12912
www.TahawusCenter.org Tahawus@verizon.net, or TahawusCenter@gmail.com