



A SMOKEY MOUNTAIN CHRISTMAS

A special corner of East Tennessee and Western North Carolina where you'll experience quaint mountain towns, unique music and entertainment, arts and crafts and the spirit of Christmas!

Sunday, December 6 - Saturday, December 12, 2015 7 days / 6 nights

DAY 1 : Sunday, December 6 - Texas to Asheville, NC

Depart Texas for Asheville, North Carolina. Transfer by motorcoach to the Historic 1908 Balsam Mountain Inn, just off the Blue Ridge Parkway and nestled in the beautiful Blue Ridge Mountains. Relax on it's wide rocker porches, cozy up to the fire in the warm library and enjoy the beauty that surrounds you. Then gather for plentiful, gracious Southern dining at the Inn.

Hotel: Balsam Mountain Inn
Meals: (D) Overnight: Balsam



DAY 2 : Monday, December 7 - Balsam, NC

Savor your Southern breakfast at the Inn then depart for nearby Asheville and the Biltmore House and Gardens America's Largest Home all dressed up for the holidays. Enjoy a tour of the house and a visit to Antler Hill Village and the Winery. Lunch on your own at one of the many delightful restaurants on the property. This evening head up to the beautiful Crest Mountain dinner theater presenting the region's top talent, set in a beautiful, glass-enclosed pavilion with a panoramic view of the breathtaking vistas of the Blue Ridge Mountains. Enjoy a cocktail or "create-your-own" beverage at the hot chocolate bar before sitting down for a great dinner and Holiday Musical Show.

Hotel: Balsam Mountain Inn
Meals: (D) (B) Overnight: Balsam



See More Tours @
www.travelphiletours.com

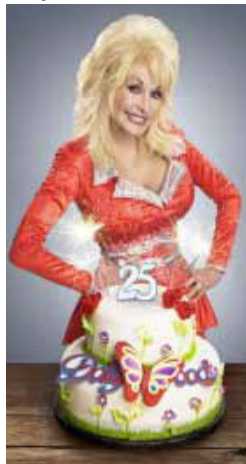


For More information or to make
reservations call
214.497.4074 or 512.847.0409

DAY 3 : Tuesday, December 8 - Balsam, NC

After another delicious breakfast at the Inn it's time to explore the vibrant friendly mountain town of Waynesville nestled in the Great Smoky Mountains with magnificent views of the Blue Ridge Parkway. Historic buildings, relaxing benches for great people watching, fine shops, art galleries, local crafts, cafes and restaurants all within walking distance of the brick sidewalks of tree lined Main Street. The day is yours to enjoy Waynesville, the Historic Inn or take a hike, just soak up the beauty of the mountains. B

Hotel: Balsam Mountain Inn
Meals: (D) (B) **Overnight:** Balsam



DAY 4 : Wednesday, December 9 Balsam, NC

Following Breakfast bid farewell to the Balsam Inn and travel through the mountains to Cherokee NC home of the Eastern Band of the Cherokee Indians. Learn about the history and culture of this proud nation from a Cherokee Storyteller at the Museum of the Cherokee Indian. Continue on across the mountains stopping at Newfound Gap, the dividing line of North Carolina and Tennessee high in the mountains. Then we'll continue down into Gatlinburg, another quaint mountain town where you will enjoy a Southern BBQ lunch and a little time to explore the town. Continue on to Pigeon Forge where you will check into the Christmas wonderland of the Inn at Christmas Place where you'll sleep "A Silent Night" in "heavenly peace.". This evening visit the Island, pull up a rocking chair and enjoy the entertainment, check out the shops and dinner on your own at Paula Deans, Timberwood, Margaritaville or one of the other restaurants.

Hotel: Inn at Christmas Place
Meals: (L) (B) **Overnight:** Pigeon Forge

See More Tours @
www.travelphiletours.com



For More information or to make
reservations call
214.497.4074 or 512.847.0409

DAY 5 : Thursday, December 10 - Pigeon Forge, NC

Enjoy a bountiful breakfast at the hotel and a visit to the Christmas Place Shop before heading to Dolly's own Dollywood this afternoon for holiday entertainment throughout this unique mountain park. Dinner at one of Pigeon Forge's great restaurants.

Hotel: Inn at Christmas Place

Meals: (D) (B) **Overnight:** Pigeon Forge

DAY 6 : Friday, December 11- Pigeon Forge, NC

Following breakfast at the hotel you will step inside the Ship of Dreams. "...a moving and touching experience that will be remembered for a lifetime". This unique museum filled with artifacts that were brought up from the ocean floor by John Joslyn and his team tells the story of the legendary Titanic. Tour the museum and enjoy lunch on the 3rd Deck while you mingle with cast characters who share stories of the Titanic. The finale of your holiday trip will be a great Applewood Farmhouse meal followed by Christmas at the Smoky Mountain Opry a multi-million dollar holiday production complete with a living nativity.

Hotel: Inn at Christmas Place

Meals: (L) (B) (D) **Overnight:** Pigeon Forge

DAY 7 : Saturday, December 12 Pigeon Forge, NC

One more southern breakfast and a final visit to your favorite shops before heading to Knoxville with a lot of great memories of the Great Smoky Mountains. Fly back to Texas.

Meals: (B)



*Itineraries are subject to change: We pledge to make every effort to operate our tour as stated in our detailed brochures. However, we need to be flexible enough to take advantage of the best value and safest opportunities that come along so that TravelPhile Tours may provide you with the best and safest possible tour. Therefore, we reserve the right to alter or curtail the itinerary or substitute private guided tours, hotels and/or conveyances as decided necessary.

FROM HOUSTON (Cash Price)

\$2089 Double \$2,727- Single

FROM AUSTIN (Cash Price)

\$2139 Double \$2,777- Single

*Airtfares subject to change.

Your deposit reserves your place

Final Balance Due September 7, 2015

(No Refunds after Final Payment Date)

What's Included?

- Round-trip airfare from Houston Hobby and Austin (call for San Antonio and Dallas fares)
- 6 nights luxury accommodations at The Balsam Inn and the Inn at Christmas Place
- 6 breakfasts, 2 lunches, and 4 dinners
- Luxury motor coach transportation
- All entrances and event fees
- Biltmore House and Garden tour
- Local entertainment at Crest Mountain Dinner
- Cherokee Indian Museum and live story-teller
- Gatlinburg, Tennessee
- Dollywood
- Titanic Museum
- Smoky Mountain Opry

We Accept Credit Cards

Mail Payments to:

215 Rim RD Wimberley, TX 78676



www.travelphiletours.com

Call Cynthia Marion @ 214-497-4074 (cell) or 512-847-0409 Wimberley office

Mail Payments to:
215 Rim RD Wimberley, TX 78676



Smokey Mountain Christmas

TRAVELPHILE REFUND POLICY:

Our contractual agreements with our suppliers require TravelPhile Tours to make non-refundable payments by no later than September 7, 2015. Should this trip cancel due to inadequate participation by September 7, 2015, a full refund is guaranteed. A tour may be booked after September 7, 2015 based on space availability on our tour at that time. Our contracts with our suppliers require that we make Non Refundable payments on your behalf at that time.

TRAVEL INSURANCE: WE HIGHLY RECOMMEND PURCHASING TRAVEL INSURANCE! If you think you may need to cancel for ANY reason, please take out travel insurance. Travel insurance must be purchased at time of final payment to guarantee coverage for preexisting conditions and to guarantee a refund if anything unexpected occurs between the date of your final payment and December 12, 2015 prohibiting you from going on the trip. For more information, please call Travel Insured directly at: (800) 243-3174 or any other travel insurer of your choice.

PLEASE PRINT CLEARLY ALL OF YOUR RESERVATION INFORMATION BELOW:

Please mail this SIGNED form with your deposit

PASSENGER #1:

NAME: _____

MAILING ADDRESS: _____ CITY: _____ ZIP: _____

EMAIL ADDRESS: _____ TELEPHONE: _____

____ I plan to take out travel insurance by September 7, 2015

(I understand if travel insurance is not purchased by September 7, 2015 pre-existing conditions are not covered)

____ I have read and understand the refund policy. For questions, please call Cynthia at 214.497.4074

DIET RESTRICTIONS: _____

TYPE OF HOTEL BED (check one): KING _____ QUEEN _____ TWO BEDS REQUIRED - QUEEN/DOUBLE/SINGLE (depending on hotel) _____

Single occupied rooms will either have a king, queen, double or single bed depending on the hotel

MOBILITY RESTRICTIONS: _____

OTHER PREFERENCES: (example: I prefer a room on lower floor) _____

SIGN HERE: _____

PASSENGER #2: (Sharing room with Passenger #1)

NAME: _____

MAILING ADDRESS: _____ CITY: _____ ZIP: _____

EMAIL ADDRESS: _____ TELEPHONE: _____

____ I plan to take out travel insurance by September 7, 2015

(I understand if travel insurance is not purchased before by September 7, 2015 pre-existing conditions are not covered)

____ I have read and understand the refund policy. For questions, please call Cynthia at 214.497.4074

DIET RESTRICTIONS: _____

TYPE OF HOTEL BED (check one): KING _____ QUEEN _____ TWO BEDS REQUIRED - QUEEN/DOUBLE/SINGLE (depending on hotel) _____

Single occupied rooms will either have a king, queen, double or single bed depending on the hotel

MOBILITY RESTRICTIONS: _____

OTHER PREFERENCES: (example: I prefer a room on lower floor) _____

SIGN HERE: _____