



## New York State Office of Parks, Recreation and Historic Preservation

Long Island Regional Office  
625 Belmont Avenue  
West Babylon, NY 11704



# Periodic Status Report

|                |   |
|----------------|---|
| Project Name:  | Nissequogue River State Park, Kings Park Property<br>Fast Track Building Demolition Contract<br>Contract No. NR 2009-2; D004087 |
| Report Period: | June 25, 2012 through July 27, 2012   |

## Project Status Summary

### Key Construction Milestones Completed This Reporting Period

- Remedial Contractor commenced efforts in support of preliminary construction matters, including, but not limited to: installation of temporary facilities and utilities; installation temporary fencing; installation of soil erosion and sediment controls; rodent controls; site clearing and grubbing activities at various sites throughout the project area.
- Asbestos abatement activities completed at Building 55 (Clubhouse).
- Asbestos abatement activities completed at Building 29.1 (Power Plant Smoke Stack).
- Asbestos abatement activities completed at Building 29.2 (Power Plant Aboveground Storage Tanks, Truck Unload Area, Pump House, Pipe Trestle and Fuel Island).
- Asbestos abatement activities (Manville steam tunnel only) completed at Building 56 (Community Store).
- Asbestos abatement activities (roofing materials only) completed at Building 6 (Power House Remains).
- Asbestos abatement activities currently being conducted at Building 82 (Morgue).

### Key Construction Milestones to be Completed for the next Reporting Period

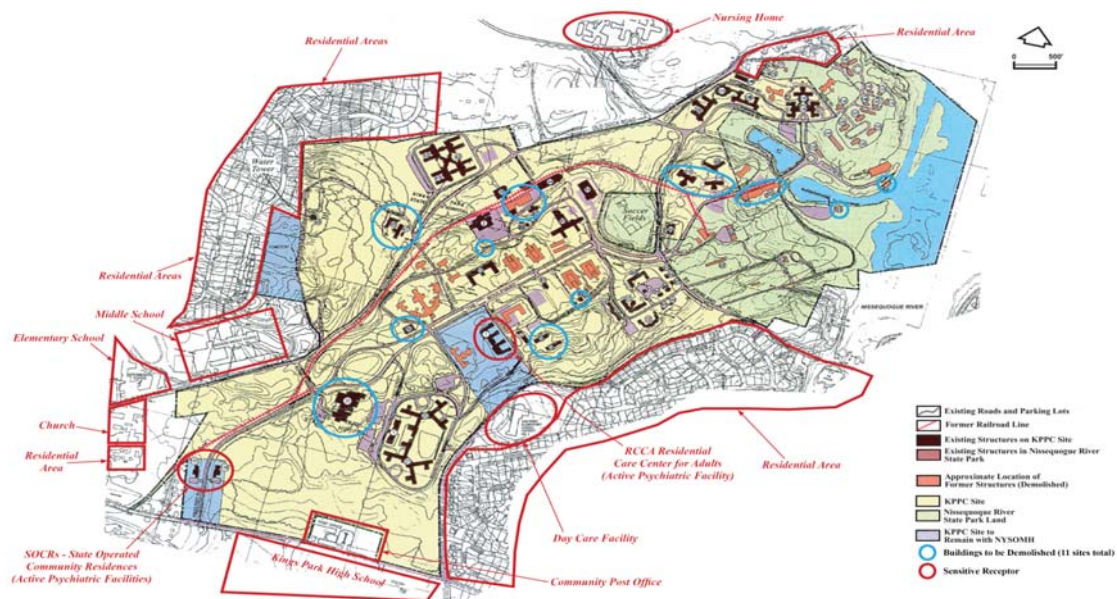
- Remedial Contractor to continue efforts in support of preliminary construction matters, including, but not limited to: installation of temporary facilities and utilities; installation temporary fencing; installation of soil erosion and sediment controls; rodent controls; site clearing and grubbing activities at various sites throughout the project area.
- Remedial Contractor to continue asbestos abatement activities within Building 56 prior to the end of July 2012.
- Remedial Contractor tentatively scheduled to begin controlled demolition of Building 122 (Inpatient 51 & 52) and Building 123 (Kitchen and Dining Room) in late July 2012/ early August 2012.
- Remedial Contractor tentatively scheduled to commence asbestos abatement activities at Building 47 (Dairy Barn) and Building 48 (Maintenance & Grounds) in August 2012.
- Remedial Contractor to continue asbestos abatement activities within Building 6 in August 2012.

# Periodic Status Report

## Community Air Monitoring Program Summary

The Community Air Monitoring Program (CAMP) is intended to prevent any adverse health effects in the communities surrounding the site and monitors air quality at work sites during demolition activities. As part of CAMP, air monitoring stations are established upwind and downwind of each respective construction area for the purpose of monitoring air quality (i.e., particulate levels; volatile organic compound levels; and sound levels) resulting from abatement and demolition activities. Results of monitoring activities conducted were found to be below respective regulatory thresholds throughout the reporting period. The following is intended to provide a brief overview of the monitoring results:

- **Particulate Level Measurements:** Real-time monitoring of particulate levels (based on 15-minute time weighted averages) downwind of each respective work area did not exceed 100 micrograms per cubic meter ( $\mu\text{g}/\text{m}^3$ ) above background (upwind perimeter) levels throughout the reporting period.
- **Volatile Organic Compound (VOC) Level Measurements:** Real-time monitoring of VOC levels (based on 15-minute time weighted averages) downwind of each respective work area did not exceed 5 parts per million (ppm) above background (upwind perimeter) levels throughout the reporting period.
- **Sound Level Measurements:** The maximum permissible “property line” sound pressure levels, as established by the Town of Smithtown, are as follows: Adjacent Residential (7 a.m. to 10 p.m.) - 55dBA; Adjacent Residential (10 p.m. to 7 a.m.) - 45dBA; Adjacent Commercial (all times) - 65dBA; and Adjacent Industrial (10 p.m. to 7 a.m.) - 70dBA. Real-time monitoring of sound levels at the perimeter of each respective work area ranged between 35 dBA to 92 dBA throughout the reporting period. Although sounds levels at each respective work area slightly exceeded Town of Smithtown maximum permissible sound pressure levels, it should be noted that each of the work areas are located within the central portions of the Site and are +/- 1,000 feet from the nearest property line. As a result, the corresponding property line sound levels were estimated to be below respective property-line thresholds.



## Periodic Status Report

### Progress Photos



Building 56 (Community Store) - Manville Steam Tunnel Asbestos Abatement Activities



Building 6 (Power House Remains) - Pre-Asbestos Abatement Activities