



New York State Office of Parks, Recreation and Historic Preservation

Long Island Regional Office
625 Belmont Avenue
West Babylon, NY 11704



Periodic Status Report

Project Name:	Nissequogue River State Park, Kings Park Property Fast Track Building Demolition Contract Contract No. NR 2009-2; D004087
Report Period:	April 29, 2013 through May 31, 2013

Project Status Summary

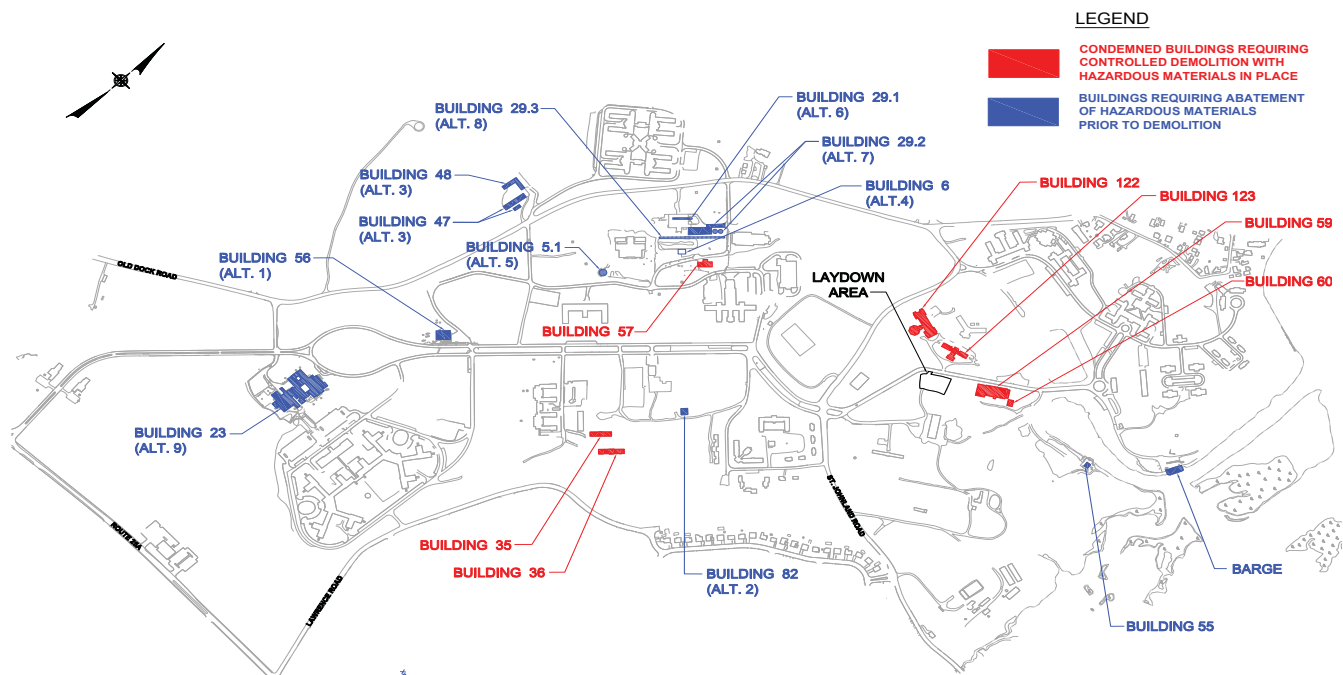
Key Construction Milestones Completed This Reporting Period

- Remedial Contractor continues efforts in support of routine construction matters, including, but not limited to: installation/maintenance of temporary fencing; and installation/maintenance of soil erosion and sediment controls at various sites throughout the project area.
- Controlled demolition of Building 36 (Homes with Staff Residences) completed.
- Asbestos abatement activities within steam tunnel network of Building 35 (Home Staff with Residences) and Building 36 (Home Staff with Residences) completed. Subsequent demolition of steam tunnel network also completed.
- Site restoration work at Building 23 (Buckman Day Treatment) completed.
- Site restoration work at Building 47 (Dairy Barn) & 48 (Maintenance & Grounds) currently in progress.
- Site restoration activities at Building 55 (Clubhouse) currently in progress.
- Site restoration activities at Building 57 (Maintenance Store/Plumbing) currently in progress.
- Site restoration activities at Building 59 (Former Power Plant) and Building 60 (Shoe Shop) currently in progress.
- Site restoration activities at Building 122 (Inpatient 51 & 52) and Building 123 (Kitchen and Dining Room) completed, sidewalk/curb restorations.
- Site restoration activities at the Barge currently in progress.

Periodic Status Report

Key Construction Milestones to be Completed for the next Reporting Period

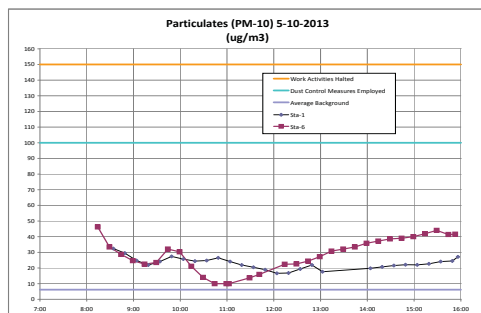
- Remedial Contractor to continue efforts in support of routine construction matters, including, but not limited to: installation/maintenance of temporary fencing; and installation/maintenance of soil erosion and sediment controls at various sites throughout the project area.
- Controlled demolition of Building 36 (Home with Staff Residences) anticipated to be completed in May 2013.
- Site restoration activities at Building 47 (Dairy Barn) & 48 (Maintenance & Grounds) are anticipated to continue throughout June 2013.
- Site restoration activities at Building 55 (Clubhouse) are anticipated to continue throughout June 2013.
- Site restoration activities at Building 57 (Maintenance Store/Plumbing) anticipated to be completed in June 2013.
- Site restoration activities at Building 59 (Former Power Plant) and Building 60 (Shoe Shop) are anticipated to continue throughout June 2013.
- Site restoration activities at the Barge are anticipated to continue throughout June 2013.



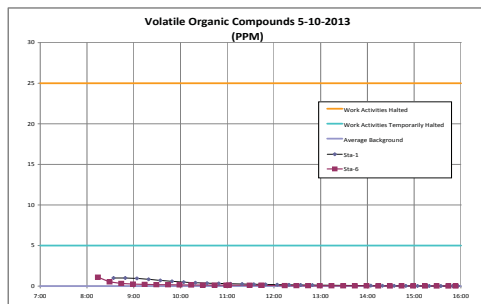
Periodic Status Report

Community Air Monitoring Program Summary

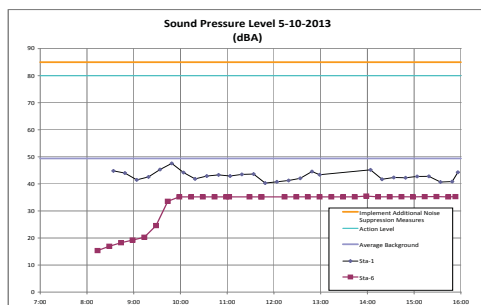
The Community Air Monitoring Program (CAMP) is intended to prevent any adverse health effects in the communities surrounding the site and monitors air quality at work sites during demolition activities. As part of CAMP, air monitoring stations are established upwind and downwind of each respective construction area for the purpose of monitoring air quality (i.e., particulate levels; volatile organic compound levels; and sound levels) resulting from abatement and demolition activities. Results of monitoring activities conducted were found to be below respective regulatory thresholds throughout the reporting period, with the exception of particulate levels recorded at Building 35&36 (Home with Staff Residences) on May 30, 2013. The following is intended to provide a brief overview of the monitoring results for this reporting period:



Particulate Level Measurements: Real-time monitoring of particulate levels (based on 15-minute time weighted averages) downwind of each respective work area did not exceed 100 micrograms per cubic meter ($\mu\text{g}/\text{m}^3$) above background (upwind perimeter) levels throughout the reporting period, with exception of the aforementioned exceedance on May 30, 2013 at Buildings 35& 36 (Home with Staff Residences). Specifically, particulate levels within this work area peaked to approximately 114 $\mu\text{g}/\text{m}^3$ (approximately 8 $\mu\text{g}/\text{m}^3$ above background action levels for this area) during the controlled demolition activities being conducted by the Contractor. Upon occurrence, the Contractor was informed immediately of the elevated reading and instructed to implement additional dust suppression measures. The Contractor utilized a water hose to wet down the work area. Particulate levels in this area subsided to below action levels shortly after implementing dust suppression measures.



Volatile Organic Compound (VOC) Level Measurements: Real-time monitoring of VOC levels (based on 15-minute time weighted averages) downwind of each respective work area did not exceed 5 parts per million (ppm) above background (upwind perimeter) levels throughout the reporting period.



Sound Level Measurements: The maximum permissible “property line” sound pressure levels, as established by the Town of Smithtown, are as follows: Adjacent Residential (7 a.m. to 10 p.m.) - 55dBA; Adjacent Residential (10 p.m. to 7 a.m.) - 45 dBA; Adjacent Commercial (all times) - 65 dBA; and Adjacent Industrial (10 p.m. to 7 a.m.) - 70 dBA. Real-time monitoring of sound levels at the perimeter of each respective work area ranged between 14 dBA to 70 dBA throughout the reporting period. Although sound levels at times throughout the period were found to exceed Town of Smithtown maximum permissible sound pressure levels within respective work areas, it should be noted that these work areas are located within the central portions of the Site and are +/- 1,000 feet from the nearest property line. As a result, the corresponding property line sound levels were estimated to be below respective property-line thresholds throughout the reporting period.

*Graphs above identify air quality conditions observed during demolition activities completed at Building 35/36 on May 10, 2013.

Progress Photos

Building 23 (Buckman Day Treatment) – Site Restoration Activities



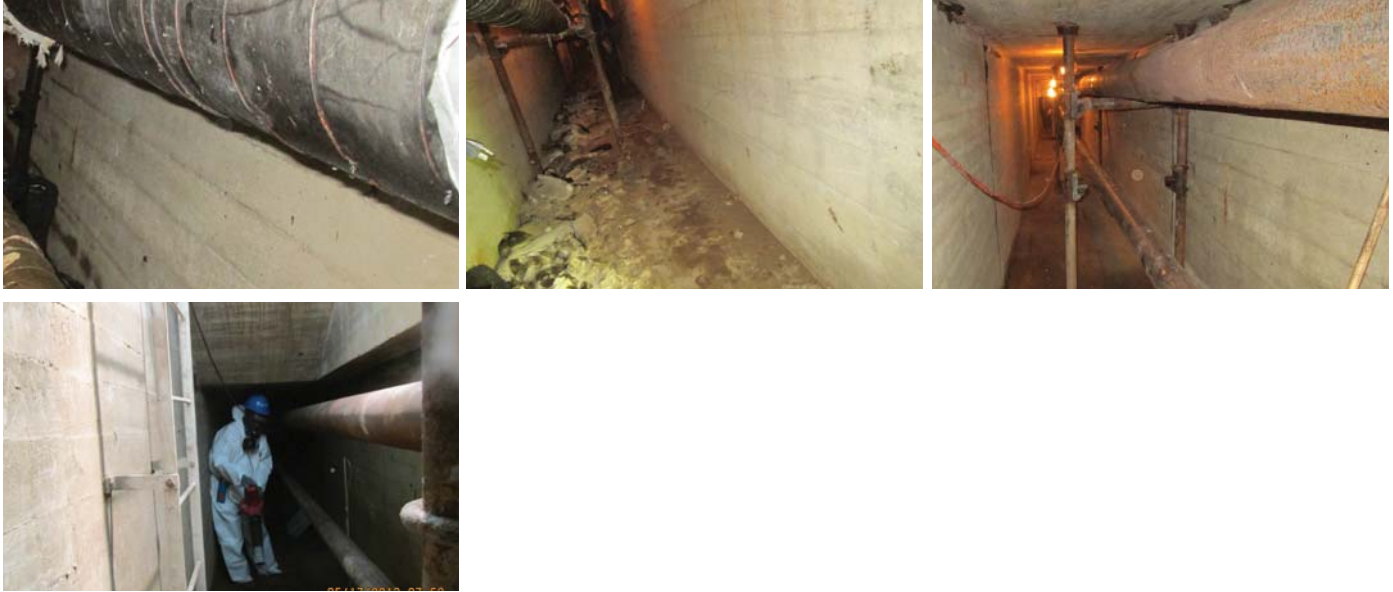
Building 35 (Home with Staff Residences) and Building 36 (Home with Staff Residences) – Controlled Demolition Activities



Periodic Status Report

Progress Photos (continued)

Building 35 (Home with Staff Residences) and Building 36 (Home with Staff Residences) – Steam Tunnel Abatement/
Demolition Activities



Building 122 (Inpatient 51 & 52) and Building 123 (Kitchen and Dining Room) - Site Restoration Activities



Barge – Site Restoration Activities

