



**Parks, Recreation  
and Historic Preservation**



**Department of  
Environmental  
Conservation**

## Nissequogue River State Park Phase III - Revitalization

Conceptual Rendering of  
NYSDEC Marine Resources Building



**db** D&B ENGINEERS  
AND  
ARCHITECTS, P.C.



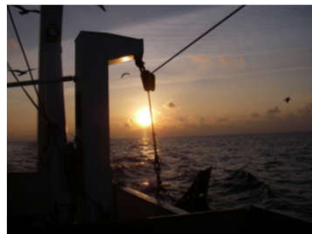
## **Phase III – Revitalization Components**

- NYSDEC Marine Resources Building
- Abatement/Demolition Program
- Water Main and Fire Hydrant Installations
- Marina Improvements and Wetland Restoration
- Park Administration Building (Building 125) -  
Exterior Improvements/Energy Conservation Upgrades

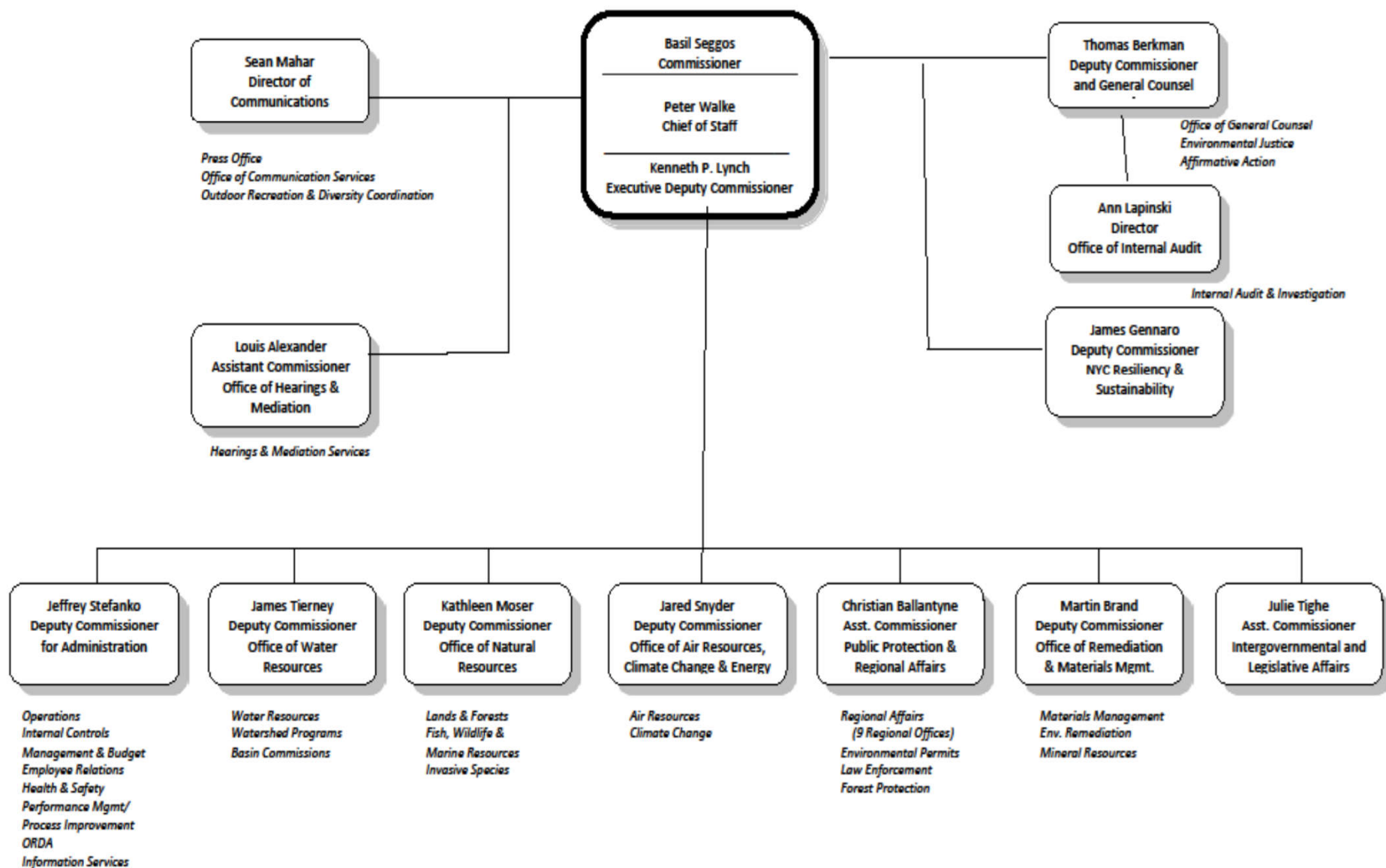


Department of  
Environmental  
Conservation

## DIVISION OF MARINE RESOURCES



New York State Department of Environmental Conservation  
Executive Organization – September 2016





# Division of Marine Resources

---

**Office of Natural Resources**

**Director**

**Marine  
Fisheries**

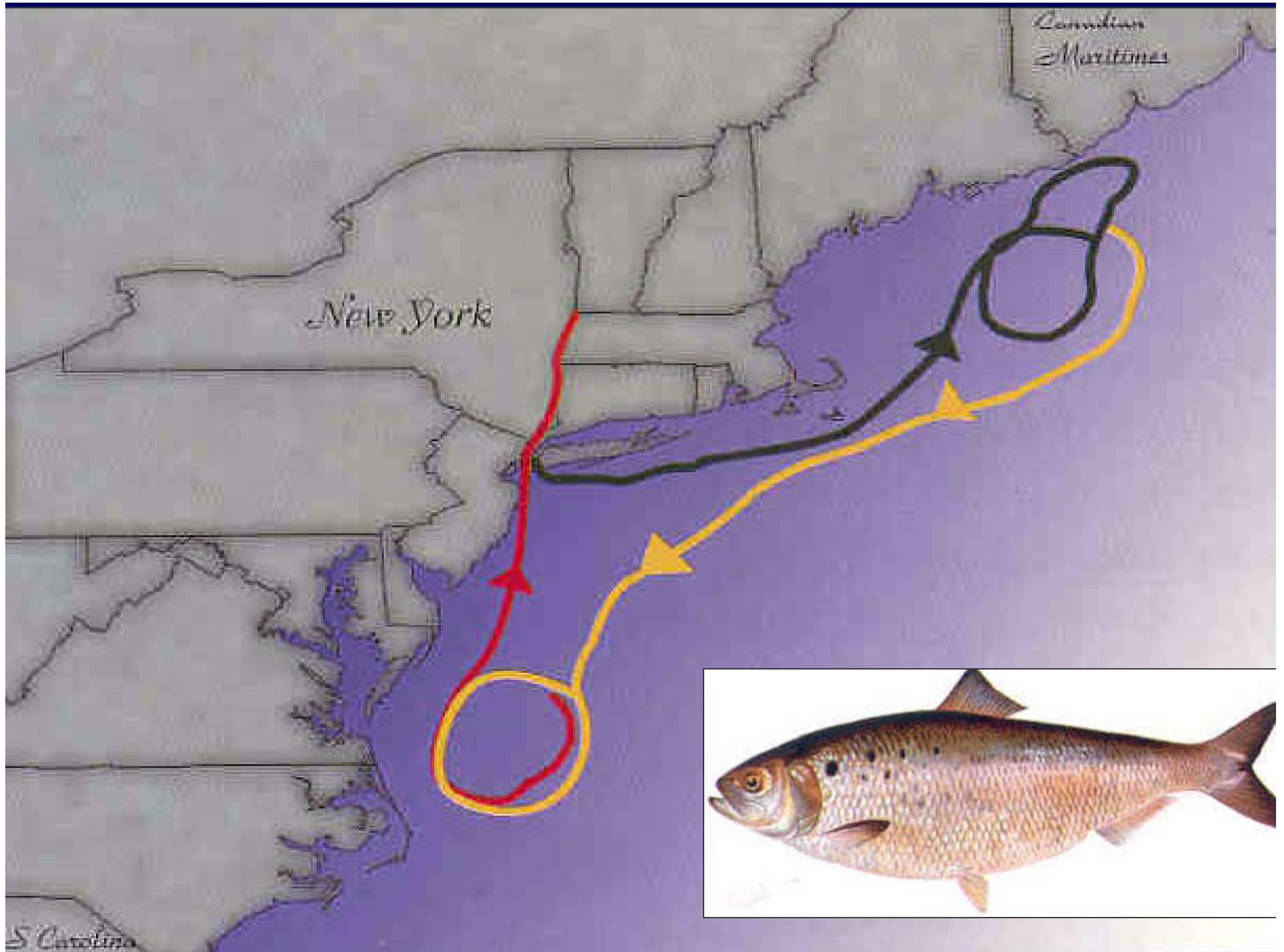
**Shellfisheries**

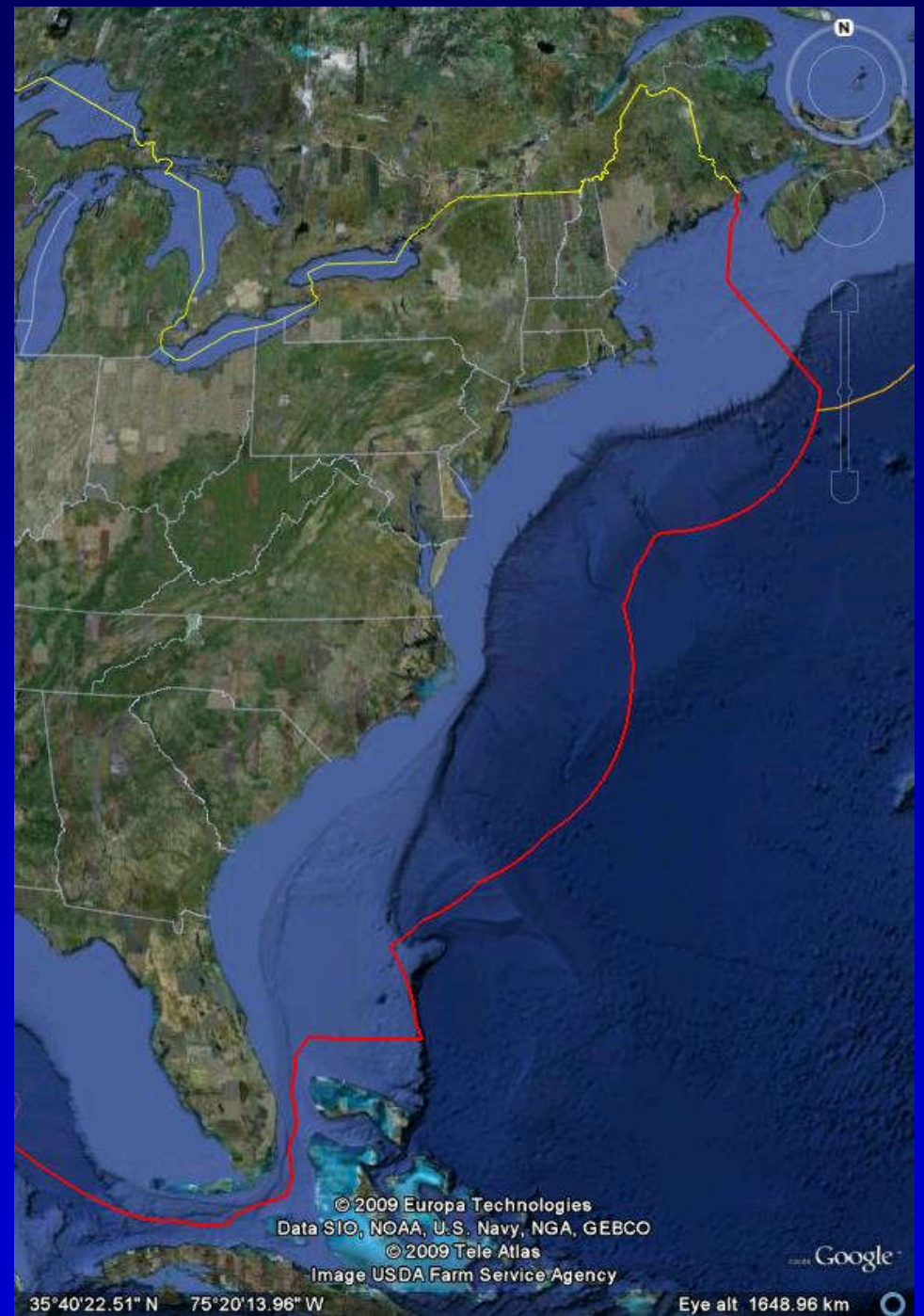
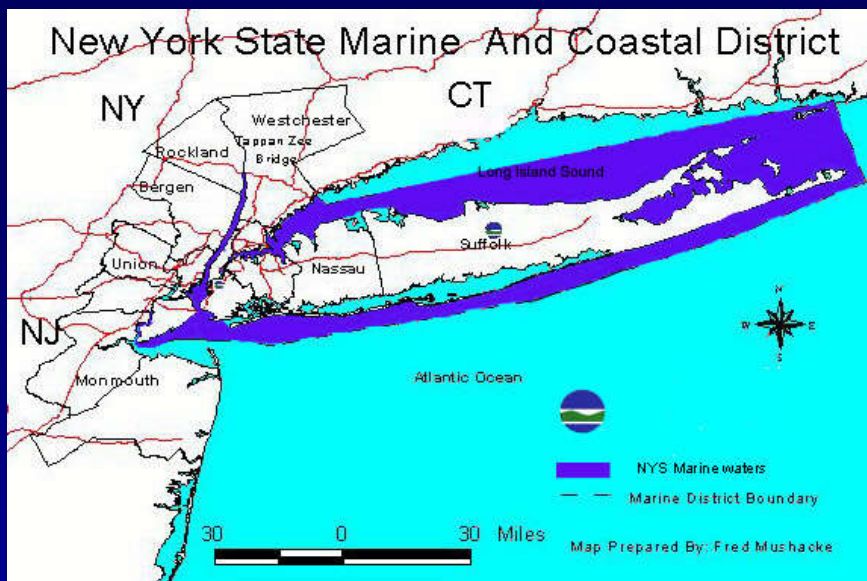
**Marine  
Habitat**

**Interstate  
Fisheries**













# Marine Resources Advisory Council

- 15 Member Council (ECL)
- Appointed by Commissioner & Legislature
- Meet Every 2 Months
- Commercial and Recreational Anglers
- Chaired by SOMAS Faculty
- Emergency Rulemaking

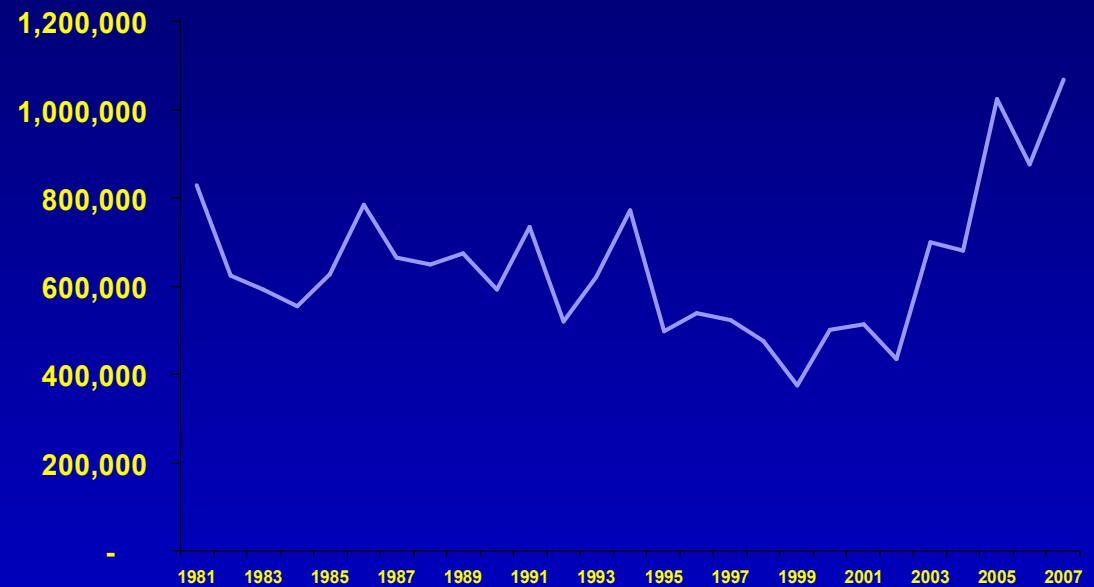
# New York Marine Finfish Statistics

- 330+ species occur in New York's marine waters;  
manage 39
- Commercial fishery
  - 80+ species of finfish
  - 34 million lbs
- Recreational fishery
  - 36+ species
  - 17.6 million pounds





# Marine Recreational Fishing Participants in New York



**NY Registry 2012 - ~ 259,000**

Source: NMFS website

# Economic Value of NY Marine Fisheries

<b>2009 Commercial Fisheries</b>	
Landings (millions of pounds)	34.0
Value (millions)	\$ 48.9
Jobs (harvest and wholesale/processor)	1,955

<b>2009 Recreational Fisheries</b>	
Catch (millions of fish)	21.1
Participants (thousands)	716.9
Expenditures (millions)	\$ 644.0



## 13

















# Shellfisheries Section

- Growing Area Classification
- Shellfish Inspection
- Microbiology Lab
- Shellfish Management

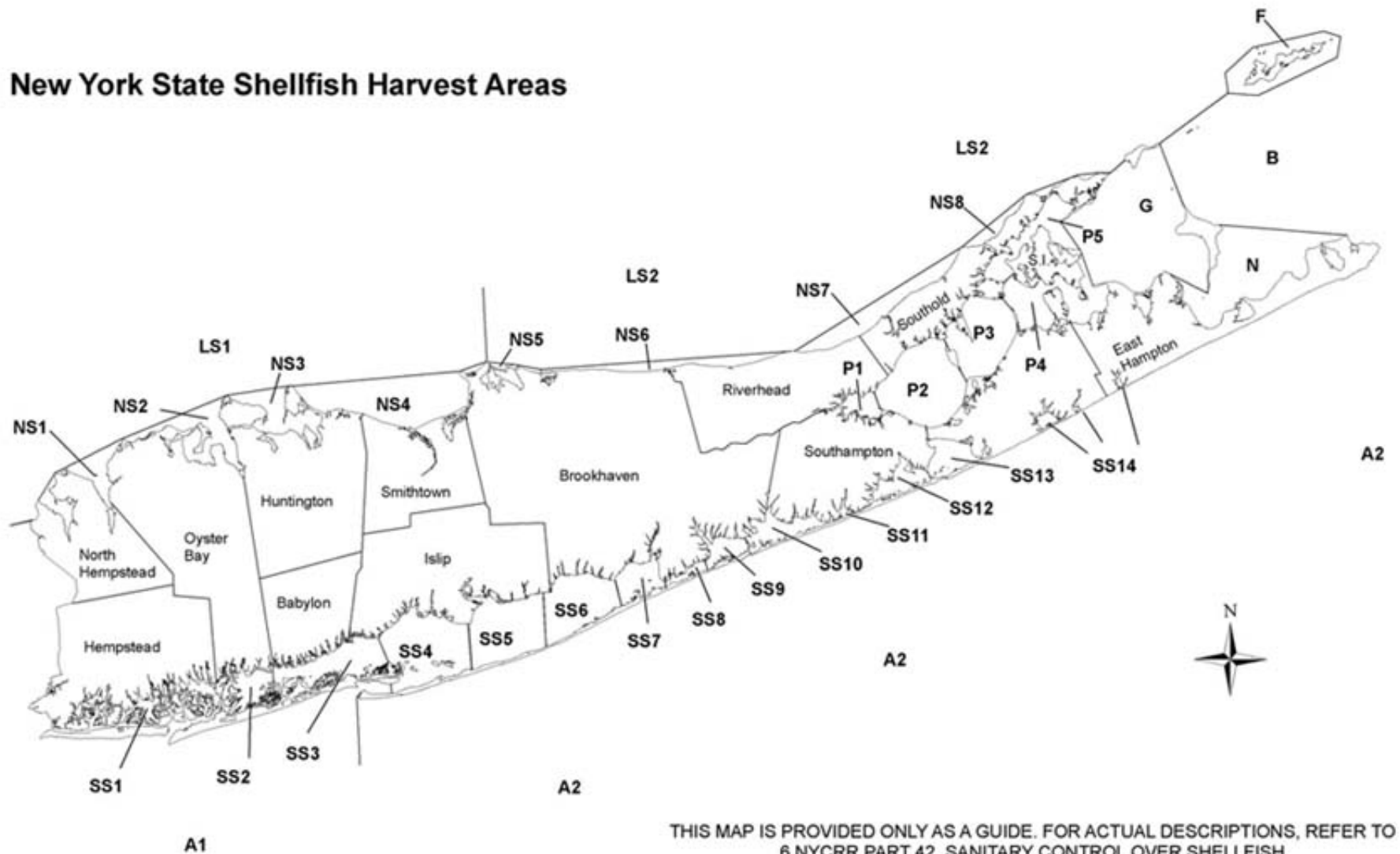


# HARVEST AREA CLASSIFICATION

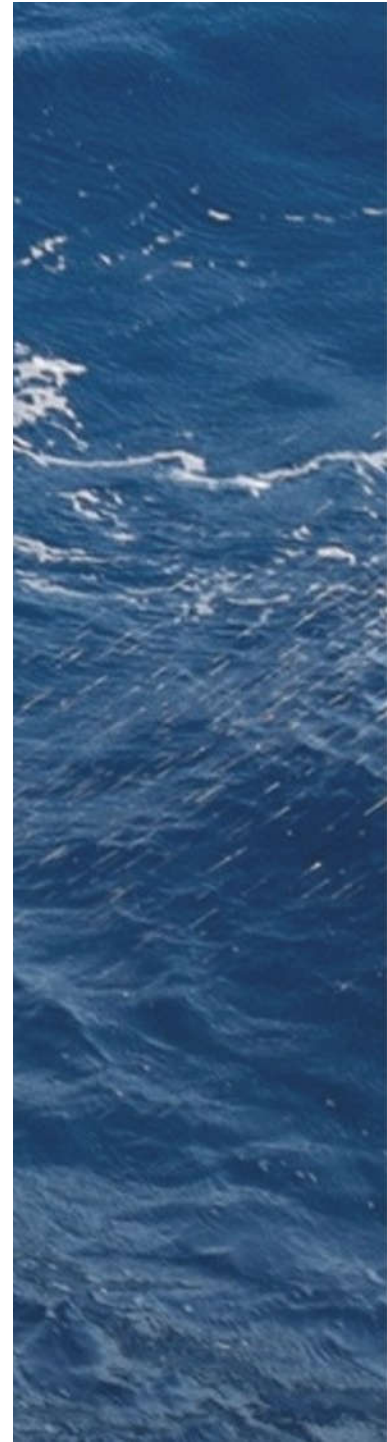
- 1.3 Million Acres in the Marine District
- 1 Million Acres Certified
- 75 Growing Areas
- 710+ Miles of Shoreline
- 1,600+ Sampling Stations
- 17 Biotoxin Monitoring Sites



## New York State Shellfish Harvest Areas



## A close-up, vertical view of the ocean surface. The water is a deep, vibrant blue, with numerous small, white foam bubbles and ripples scattered across the frame, suggesting the wake of a boat. The texture of the water is highly detailed, with varying shades of blue and white foam.





# Laboratory

**Staff of Six**

**Supporting:**

**DLE**

**Shellfish  
Transplant  
Program**

**Growing  
Area  
Certification  
Unit**

**Shellfish  
Inspection**

**FDA**

# Shellfish Inspection Unit



# Shellfish Inspection Unit

- Sanitation & Records Inspections of ~320 facilities
- Review & Approve Permits for Shellfish Shippers
- Investigate shellfish related food borne illnesses
- Investigate reports of illegal activities
- Shellfish Recalls
- Shellfish Landings
- Maintain conformity with NSSP





**The New Fulton Fish Market handles millions of pounds of seafood daily and annual sales exceed one billion dollars.**





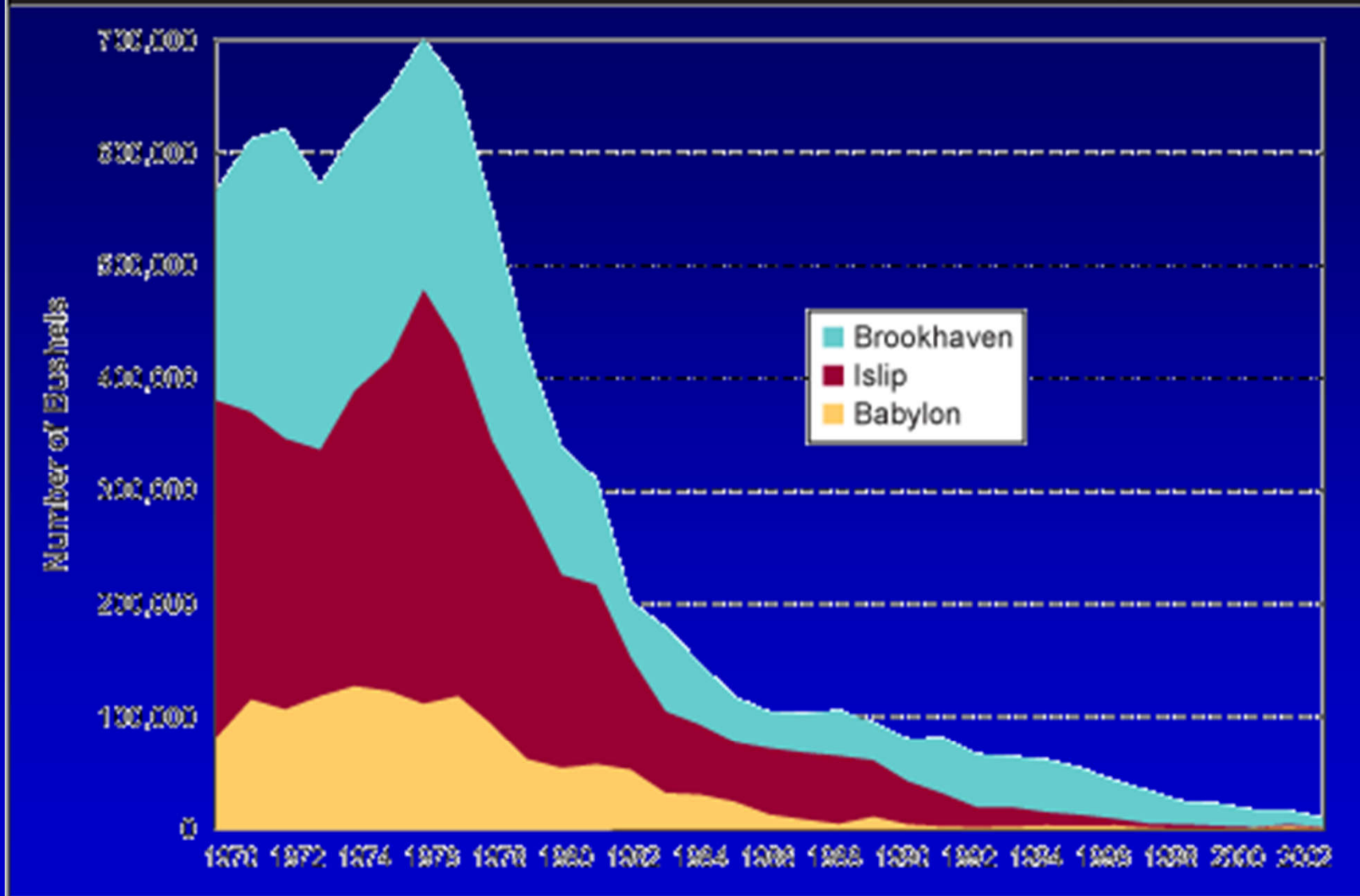


# SHELLFISH MANAGEMENT UNIT

- Management of the State's shellfish resources
- Issuance of commercial and recreational licenses for taking, sale, and landing of marine resources



## Annual Hard Clam Harvest from Great South Bay



Source: NYSD DOE



Department of  
Environmental  
Conservation



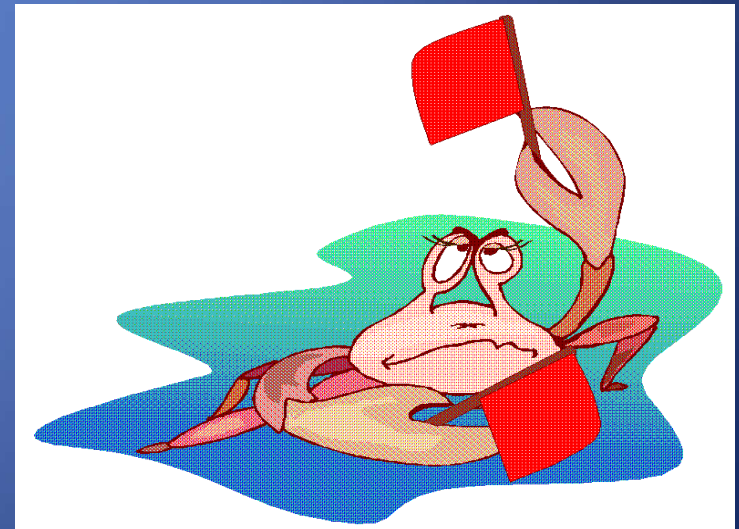
# Marine Resources Permit Office

- Issue over **10,000 licenses/yr**
- Commercial & Recreational
- Over 40 permit types
- **Annual sales \$1.1 million**
- Only marine licensing office in New York State



## Challenges:

- Ongoing legal and permit compliance issues
- Commercial Limited Entry Licenses  
Not enough of them
- Marine Permit System - overhaul and rebuild; \$\$\$ & time
- Only 1 full-time licensing clerk –  
Retiring this year.



# Marine Habitat Protection: Overview

- Estuary Management Programs
- Tidal Wetland Regulatory Program (R 1-3)
- Environmental Protection Programs
- Seagrass Protection Act
- Marine Waterway Access/Reefs
- NY & Regional Habitat Initiatives
- Conservation Mapping and Restoration Efforts





















# Special Projects

- Implementation of the Seagrass TF Report
- Climate Change – NFWPCAS
- LIS Seafloor Mapping
- Marine Resources Centralized Database
- Ocean Program – OAP, marine and ocean spatial planning, MARCO, potential ROC, DOS Ocean Amendment, BOEM-NY Renewable Energy Task Force, Ocean Energy Projects, O&GL Projects

# Ocean Action Plan



- 5 year plan with long term goals and short term actions
- Inclusive effort focused on improving the health of our ocean ecosystems and the services they provide to New Yorkers
- Draft to public in Spring, 2014
- Final Summer 2016



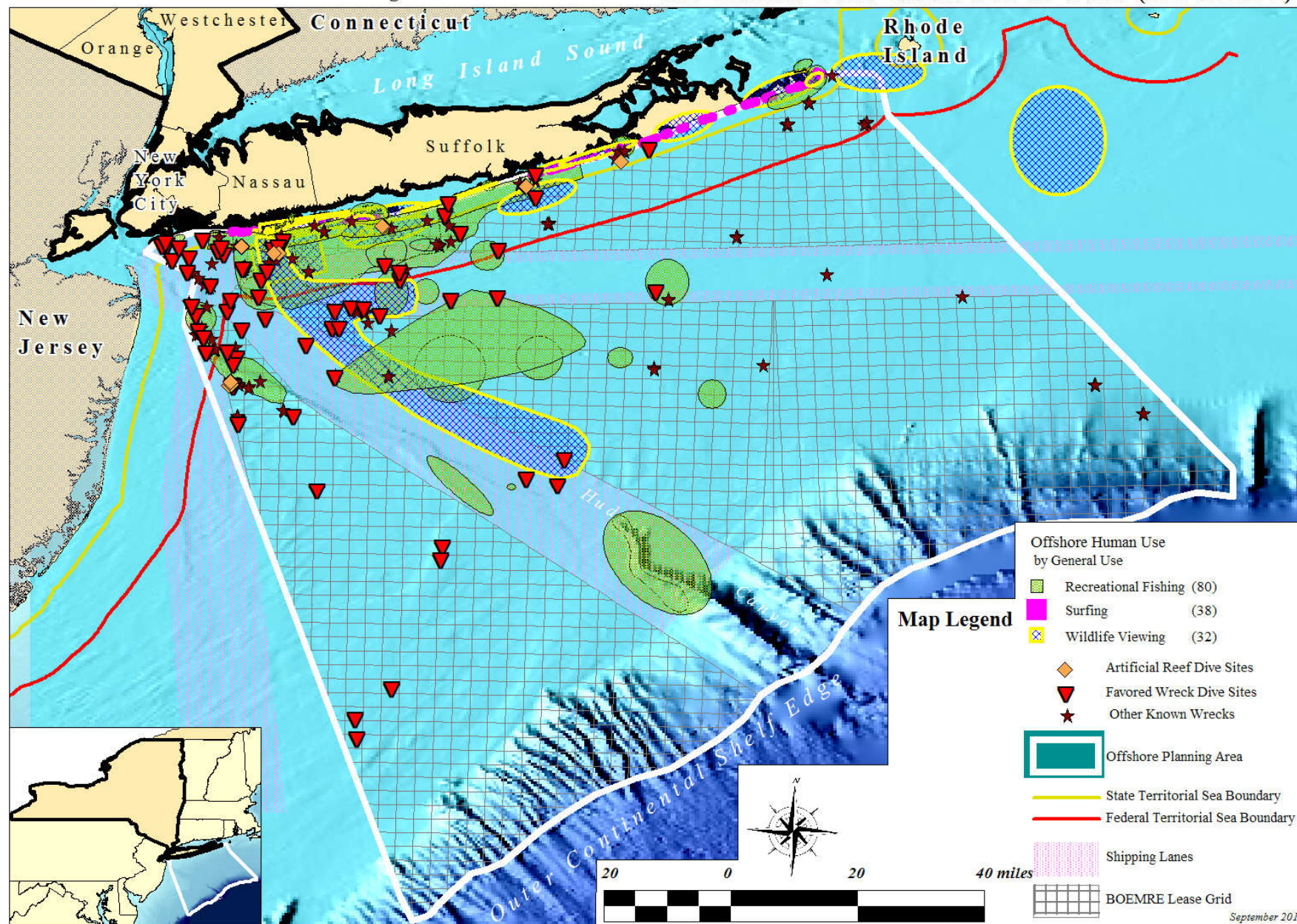
# OAP – Critical for New York Environmental and Economic Future

- **60% of NY Population live along 2,600 coastal miles**
- **Significant recreational uses**
- **Fisheries generate \$5 billion annually and 42,000 jobs**
- **Shipping generates \$175 billion and 279,200 jobs**
- **Healthy ecosystem critical for economic support**
  - **330 marine fish species (manage only 39)**
  - **Marine habitats**
  - **Water quality**
  - **Ocean Health**
- **Alternate Energy development**



# New York Offshore Planning Area

All Human Uses Recorded to Date (9/21/2011)



Data sources: New York State Department of State

Produced by New York State Department of State

September 2011

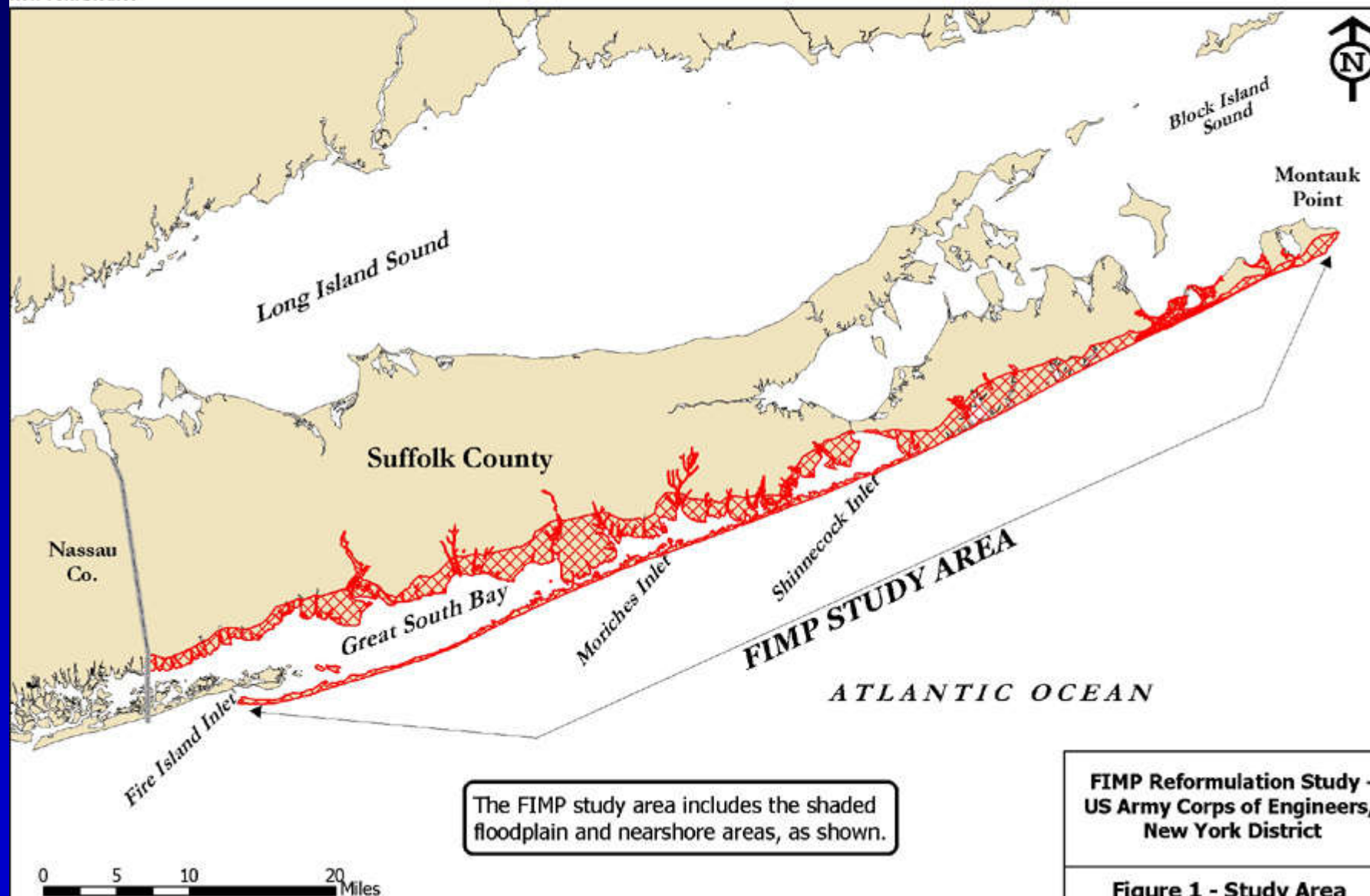






US Army Corps  
of Engineers  
New York District

# Fire Island Inlet to Montauk Point, New York Reformulation Study



FIMP Reformulation Study -  
US Army Corps of Engineers,  
New York District

Figure 1 - Study Area



NEW YORK  
STATE OF  
OPPORTUNITY

Department of  
Environmental  
Conservation



# Division Summary

**Manage Wild populations of Finfish, Crustacean and Shellfish**

**Interstate Management**

**Implement State Shellfish Public Health Programs**

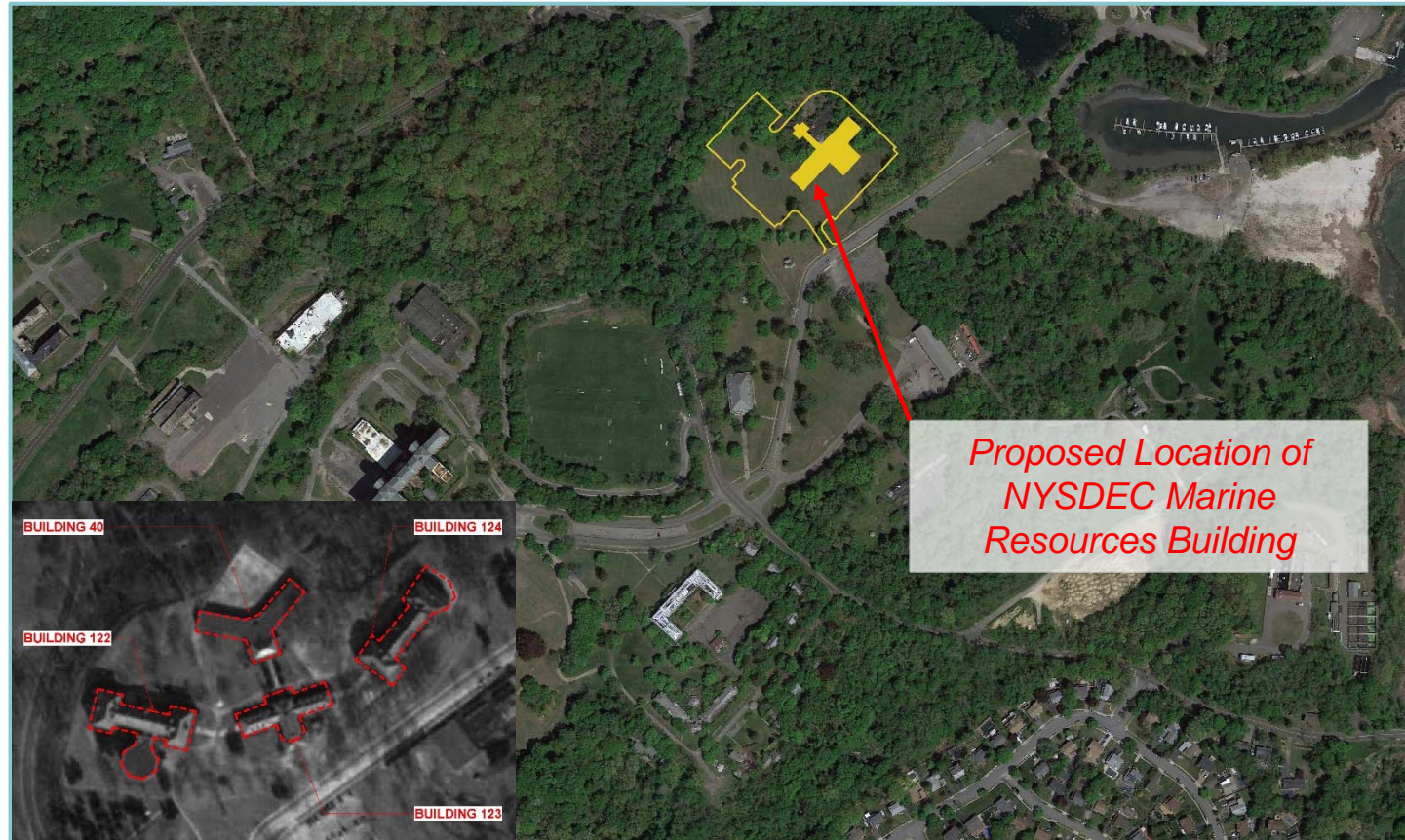
**Mis-steps - significant impacts human health/public's livelihoods**

**Habitat programs are critical for Coastal Development**

**Emerging issues are creating new challenges  
(Oceans, Shellfish, Sandy, etc.)**

# NYSDEC Marine Resources Building

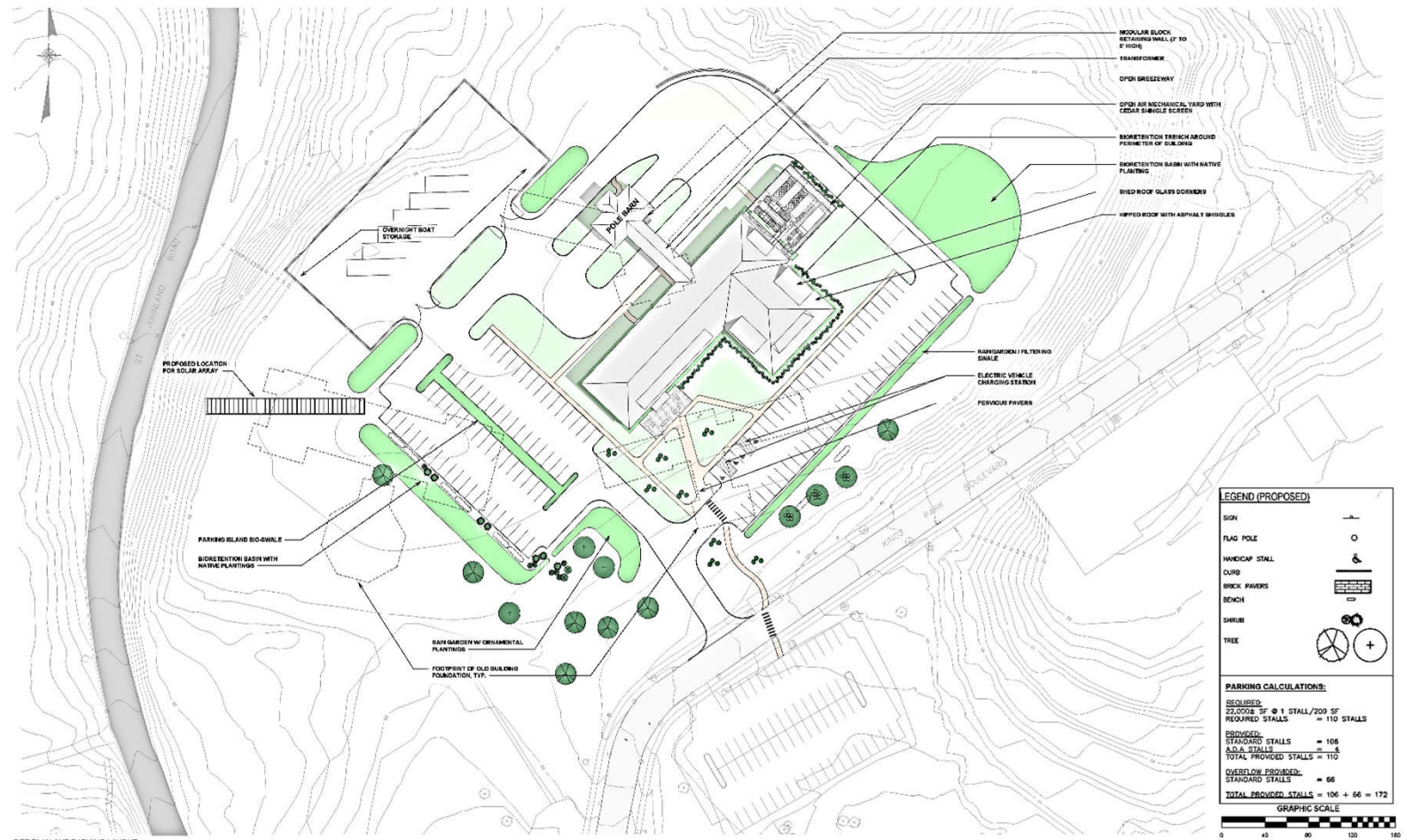
## *Site Location Map*





# NYSDEC Marine Resources Building

## Conceptual Site Plan





# NYSDEC Marine Resources Building

*Aerial Rendering - Birds Eye Vantage Point*





# **NYSDEC Marine Resources Building**

## ***Exterior Rendering – Roadside Vantage Point***





# NYSDEC Marine Resources Building

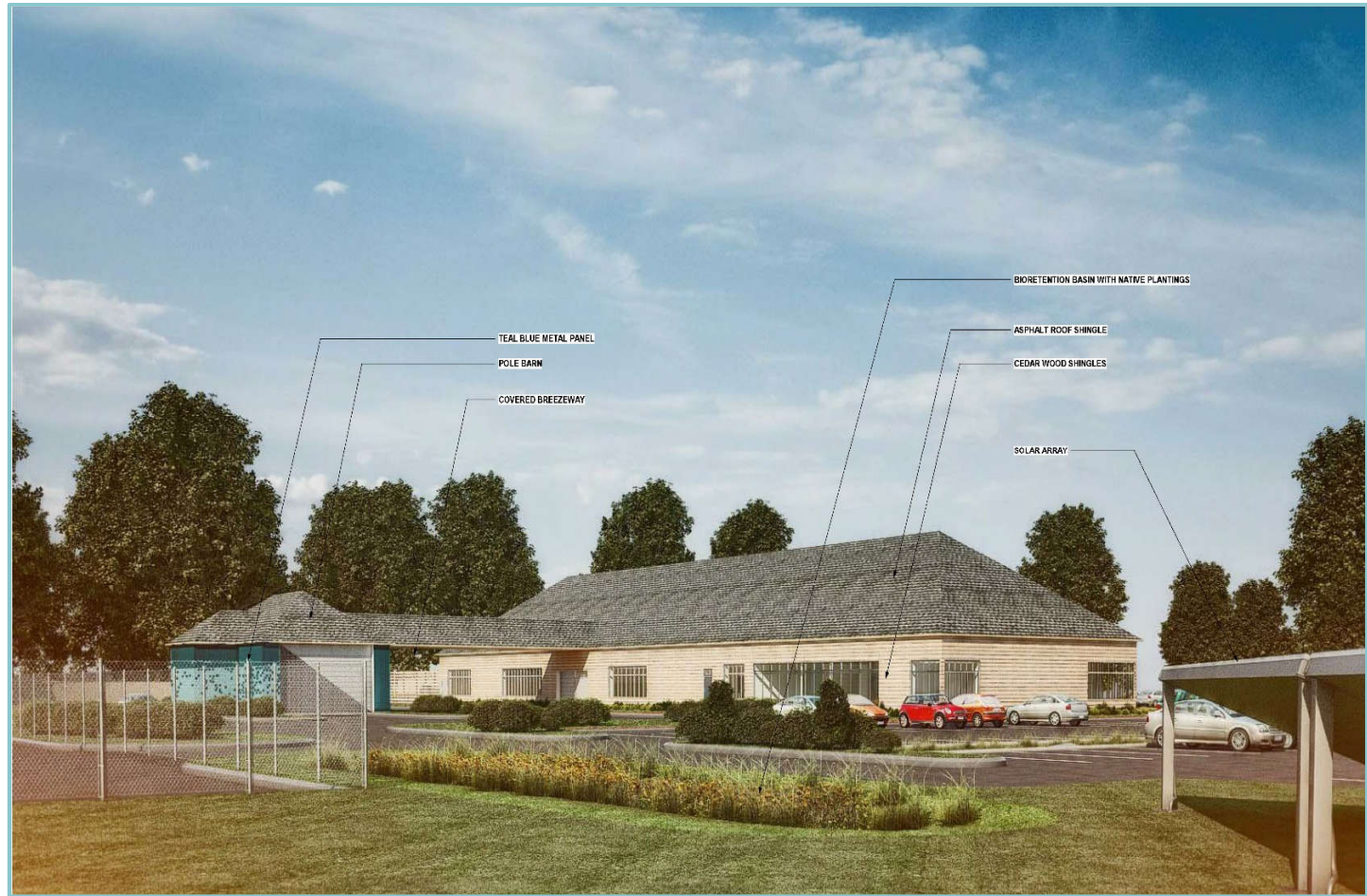
## *Exterior Rendering – Southeast Perspective*





# NYSDEC Marine Resources Building

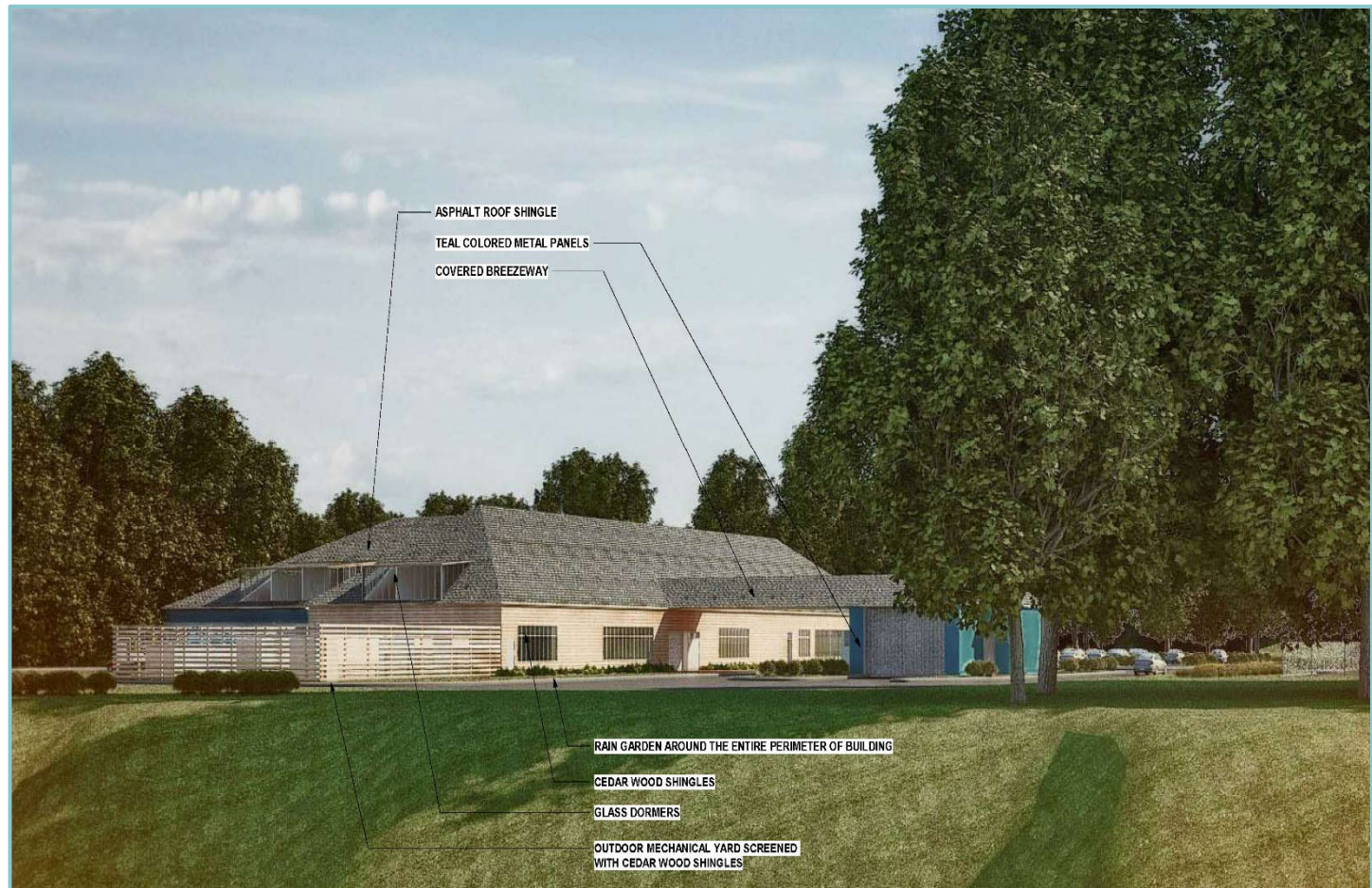
## *Exterior Rendering – Northeast Perspective*





# NYSDEC Marine Resources Building

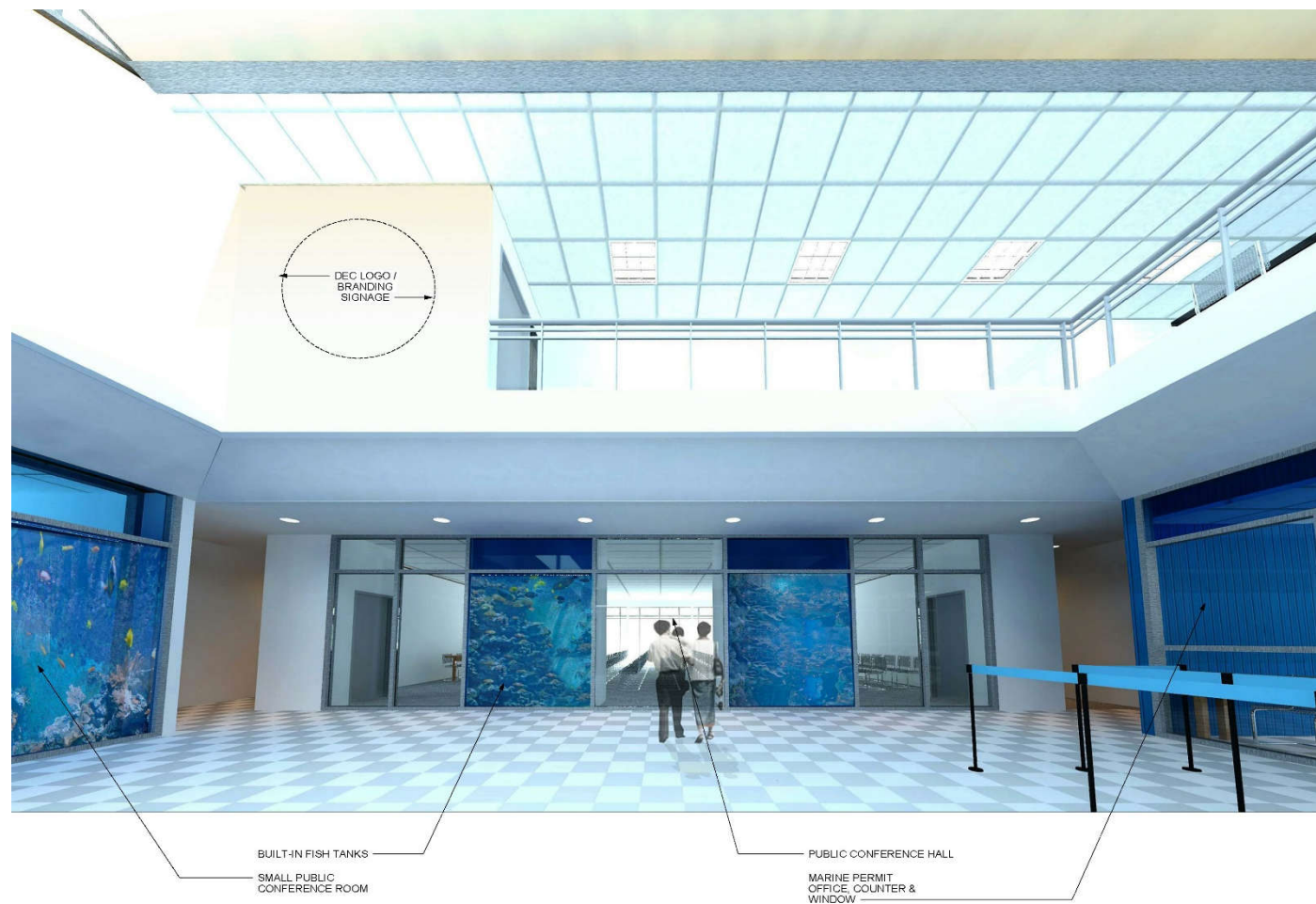
## *Exterior Rendering – Southwest Perspective*





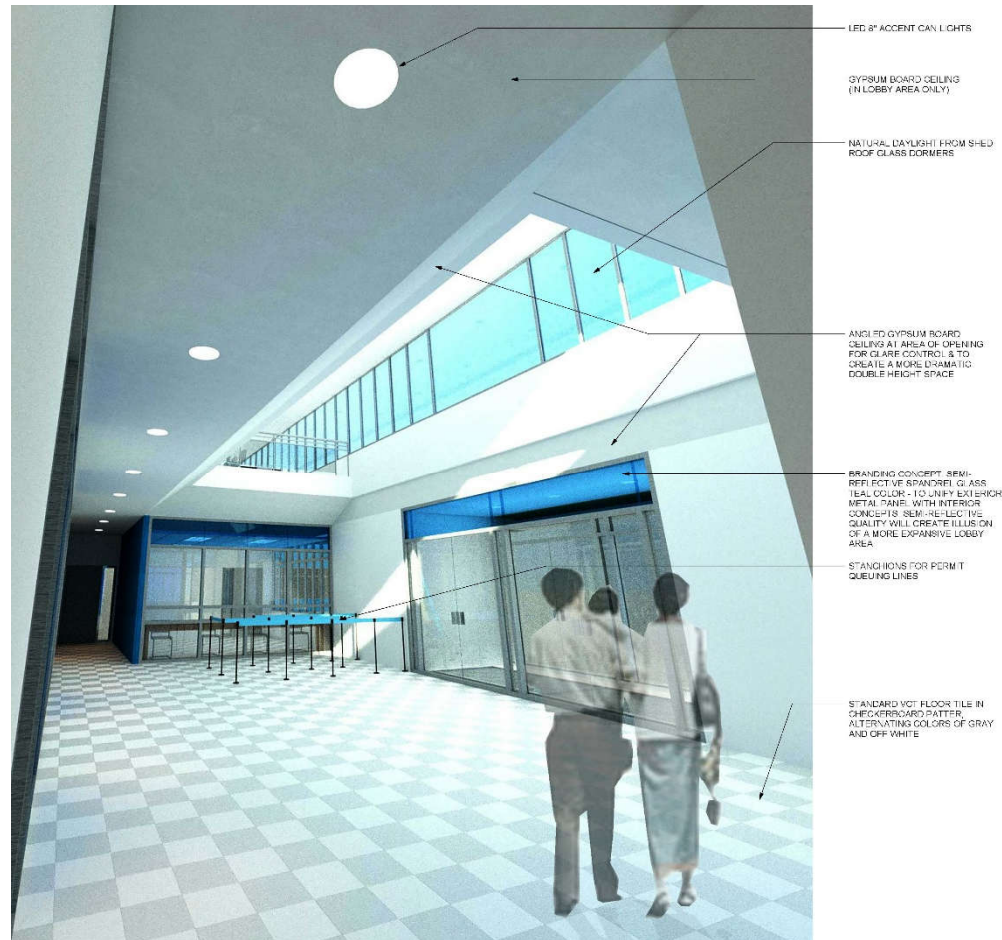
# NYSDEC Marine Resources Building

## *Interior Rendering - Lobby*



# NYSDEC Marine Resources Building

## *Interior Rendering - Lobby*





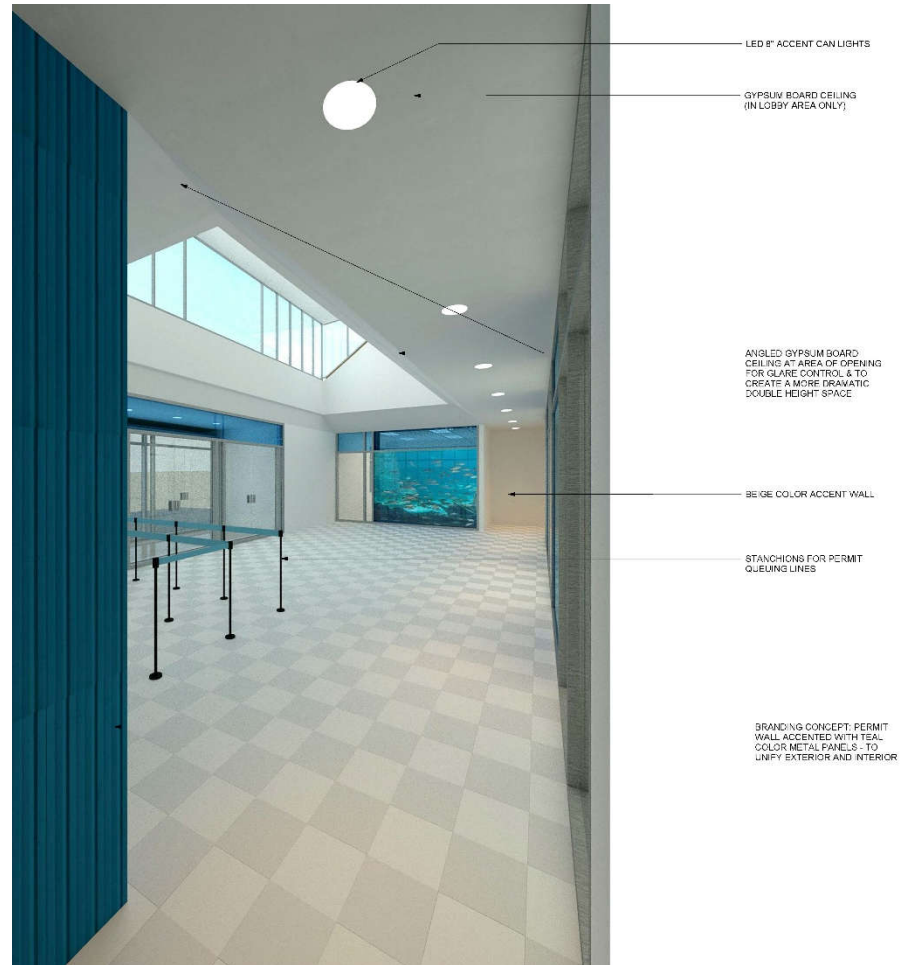
# NYSDEC Marine Resources Building

## *Interior Rendering - Lobby*



# NYSDEC Marine Resources Building

## *Interior Rendering - Lobby*





# NYSDEC Marine Resources Building

## *Interior Rendering – Second Floor Lobby*

ACOUSTICAL CEILING TILE WITH  
KNIFE EDGE ACCENT DETAIL

ACCENT LED STRIP LIGHTING

DEC LOGO / BRANDING SIGNAGE

SHED ROOF GLASS DORMERS

BUILT-IN FISH TANK BELOW

GLASS AND ALUMINUM  
GUARDRAILING

BREAKROOM TABLES AND  
CHAIRS



# NYSDEC Marine Resources Building

## *Interior Rendering – Second Floor Lobby*



BRANDING CONCEPT:  
ELEVATOR WALL ACCENTED  
WITH TEAL COLOR METAL  
PANELS - TO UNIFY EXTERIOR  
AND INTERIOR

BRANDING CONCEPT: SLIM  
REFLECTIVE SPATIAL GLASS  
TEAL COLOR - TO UNIFY  
EXTERIOR AND INTERIOR  
CONCEPTS



# NYSDEC Marine Resources Building

*Exterior Rendering – Southeast Perspective (Evening)*





# Abatement/Demolition Program Building Locations





# Abatement/Demolition Program

## Building Inventory

- Building 18.1 – Medical Staff Housing (Partial)
- Building 18.2 – Medical Staff Housing
- Building 18.3 – Medical Staff Housing (Partial)
- Building 40 – Day Care Facility (Partial)

*Note: Controlled Demolition Buildings in RED, will not require abatement of hazardous materials.*

# Abatement/Demolition Program

## Building 18.1 – Medical Staff Housing





# Abatement/Demolition Program

## Building 18.2 – Medical Staff Housing





# Abatement/Demolition Program

## Building 18.3 – Medical Staff Housing





# Abatement/Demolition Program

## Building 40 – Day Care Facility



# **Abatement/Demolition Program**

## **Compliance With Environmental Quality Standards**

- Air Quality
  - Clean Air Act – 40 CFR Part 61 (NESHAPs – Asbestos)
  - NYSDOL – Industrial Code Rule 56
    - Independent asbestos project monitoring program
    - Comprehensive asbestos air sampling protocols
  - Community Air Monitoring Program (CAMP)
    - Particulate Matter (dust)
    - Noise
- Water Quality
  - Clean Water Act – 40 CFR Part 122 (NPDES)
  - 6 NYCRR – Part 750 (SPDES)
    - Stormwater Pollution Prevention Plan
    - Wetlands Protection – 6 NYCRR Parts 661-664

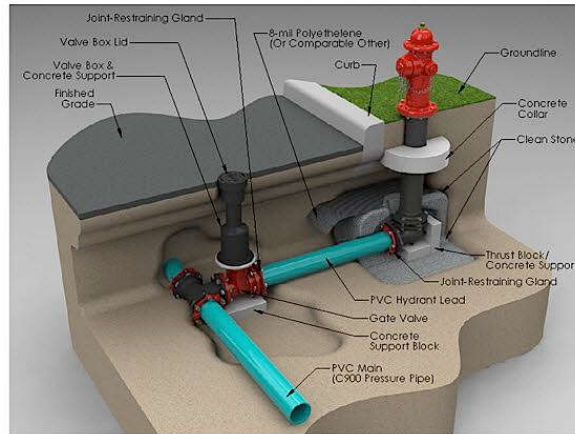


# **Abatement/Demolition Program**

## **Compliance With Environmental Quality Standards (Cont.)**

- Solid/Hazardous Waste
  - Resource Conservation and Recovery Act (RCRA)  
Hazardous and Solid Waste Amendments (HSWA)
  - 6 NYCRR Part 360 (solid waste)
  - 40 CFR Parts 260 – 268 (hazardous waste)
  - 6 NYCRR Parts 370 – 376 (hazardous/universal waste)
  - TSCA-40 CFR Part 761 (PCBs)
- Worker Protection
  - Occupational Safety and Health Administration – 29 CFR  
1910.120
- Hazardous Materials Management
  - USDOT Hazardous Materials Regulations – 49 CFR, Parts  
100-185

# Water Main and Fire Hydrant Installations



- New Water Main and Fire Hydrants to be installed throughout NRSP
  - Improved Fire Suppression Capability
  - New Water Supply for Soccer Fields

- Elimination of existing Water Tower currently servicing NRSP
- Abandon Existing Water Mains





# Marina Improvements and Wetland Restoration

## *Location Map*





# Marina Improvements and Wetland Restoration Conceptual Plan





## *Park Administration Building (Building 125) Exterior Improvements/Energy Conservation Upgrades*



- Roof Improvements
- Brick Façade Repointing
- Window Restoration
- Cupola Restoration
- Heating and Cooling System Upgrades
- Exterior ADA Access Improvements

# Proposed Construction Schedules

## NYSDEC Marine Resources Building

- Construction Initiation: Winter 2018
- Construction Completion: Winter 2020

## Abatement/Demolition Program

- Construction Initiation: Spring 2018
- Construction Completion: Winter 2018