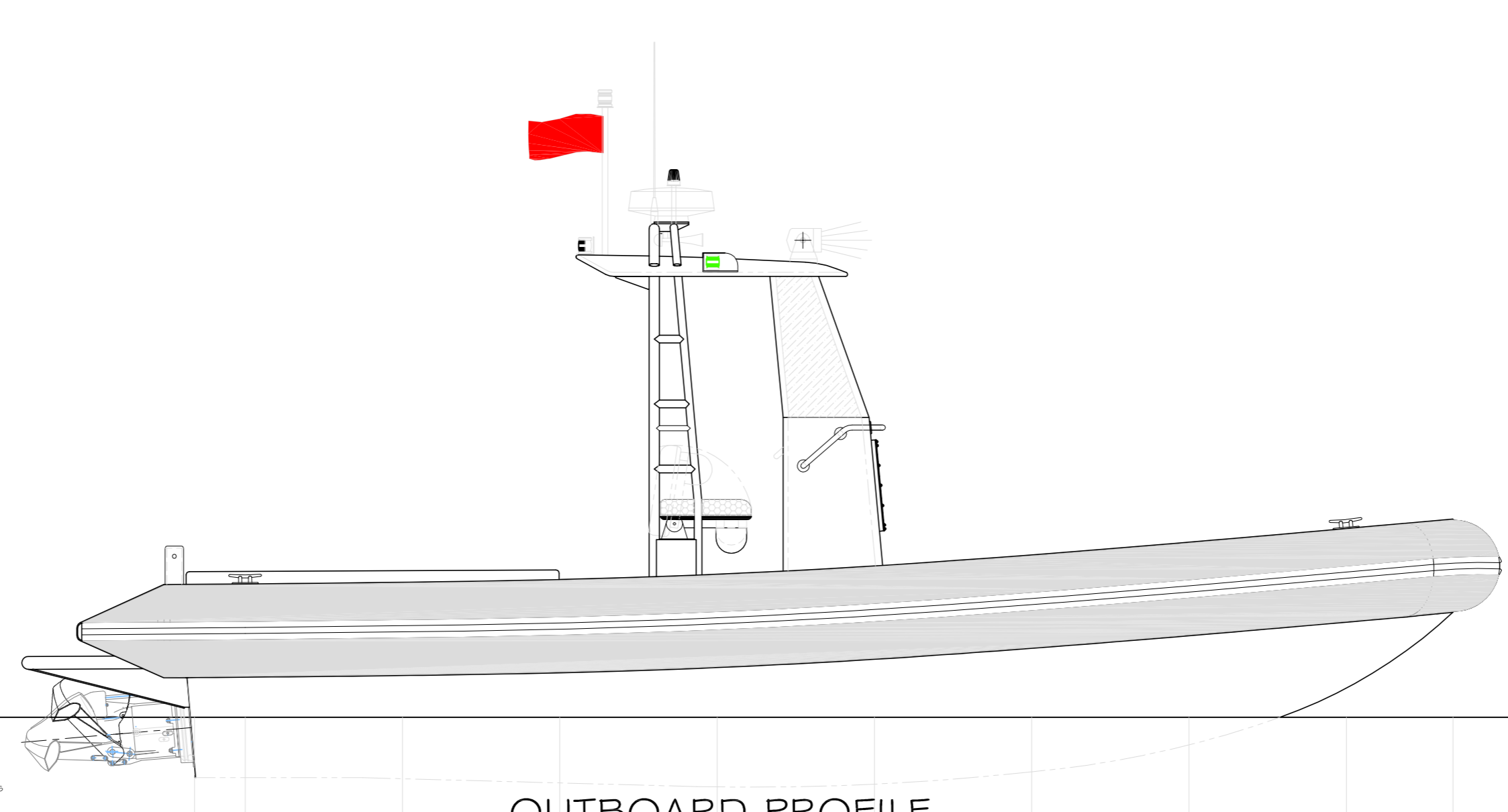
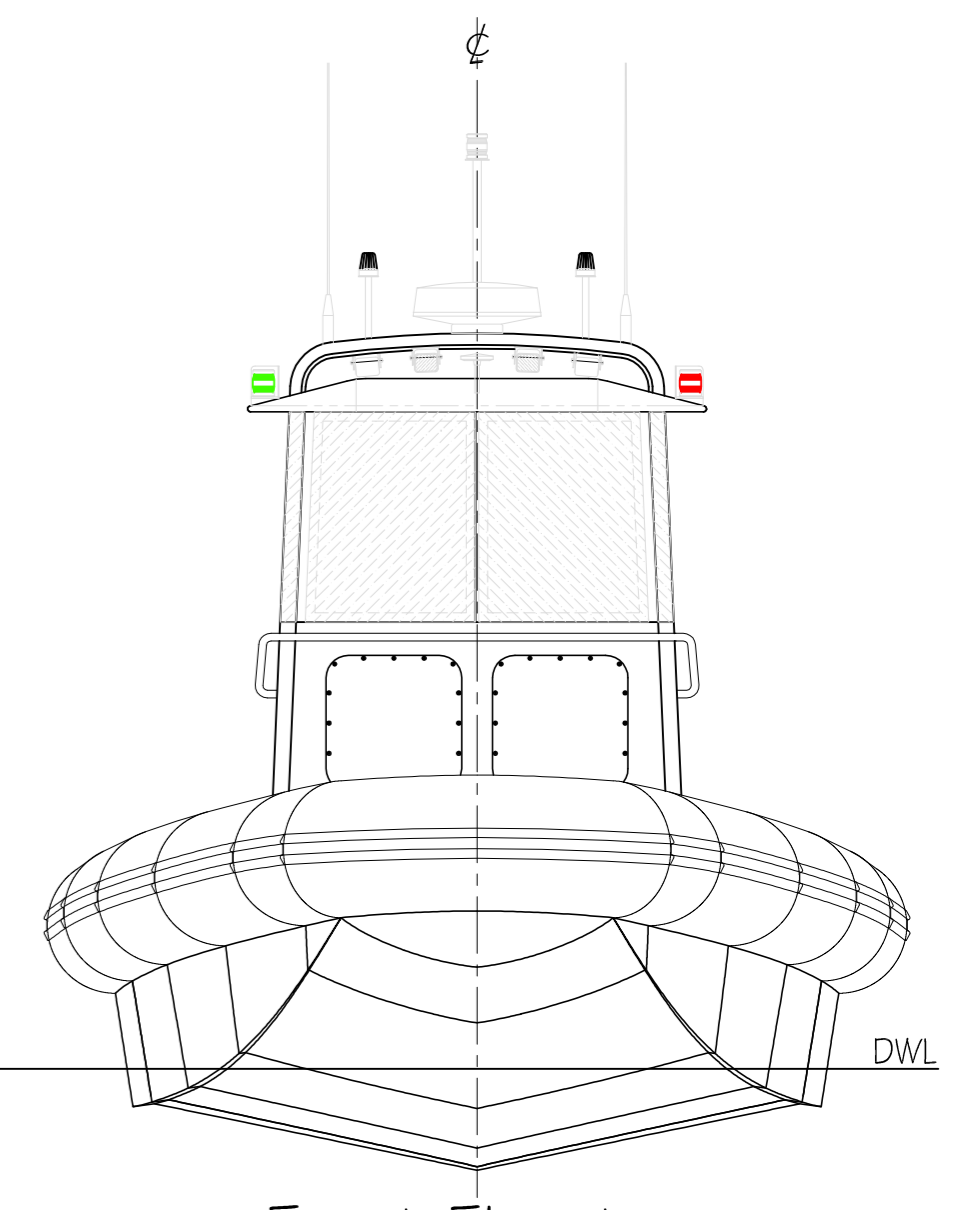


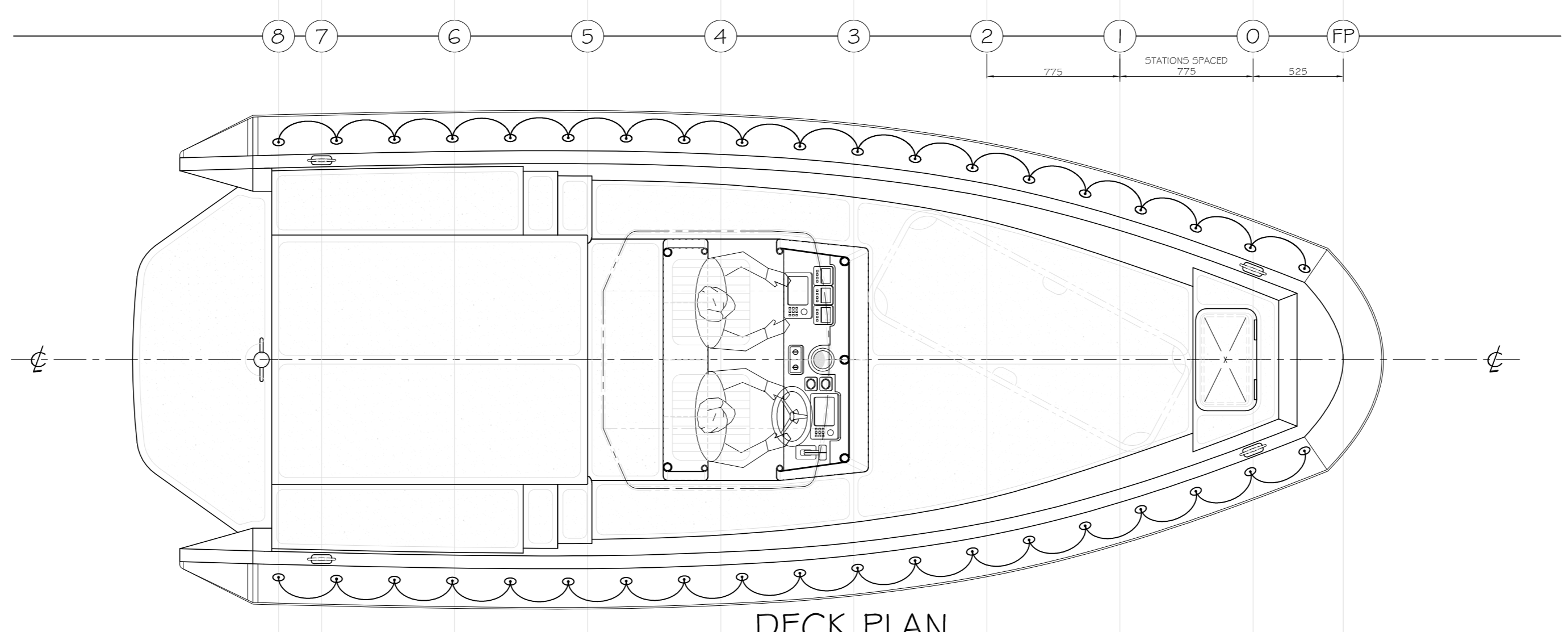
Aft Elevation



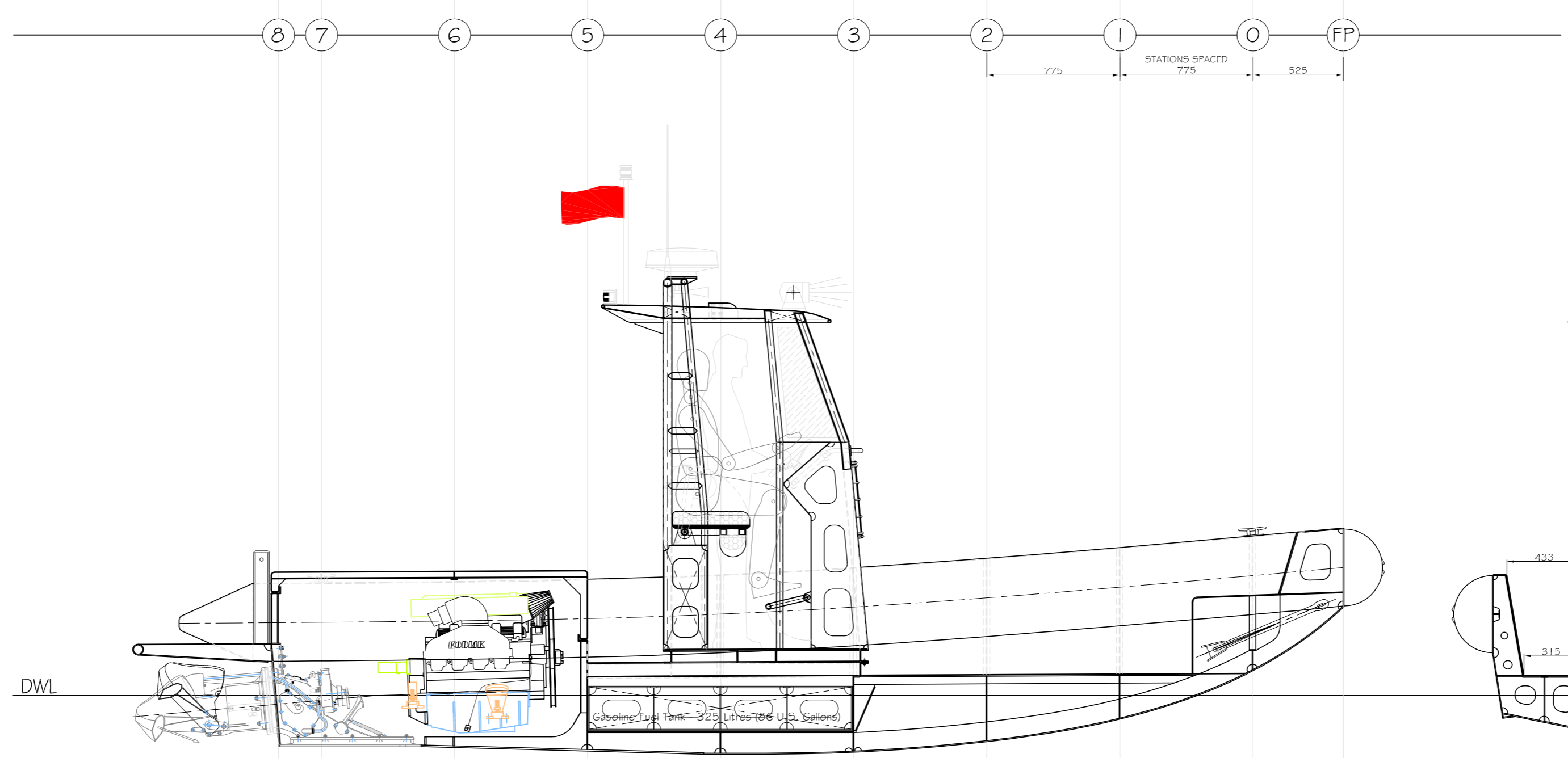
OUTBOARD PROFILE



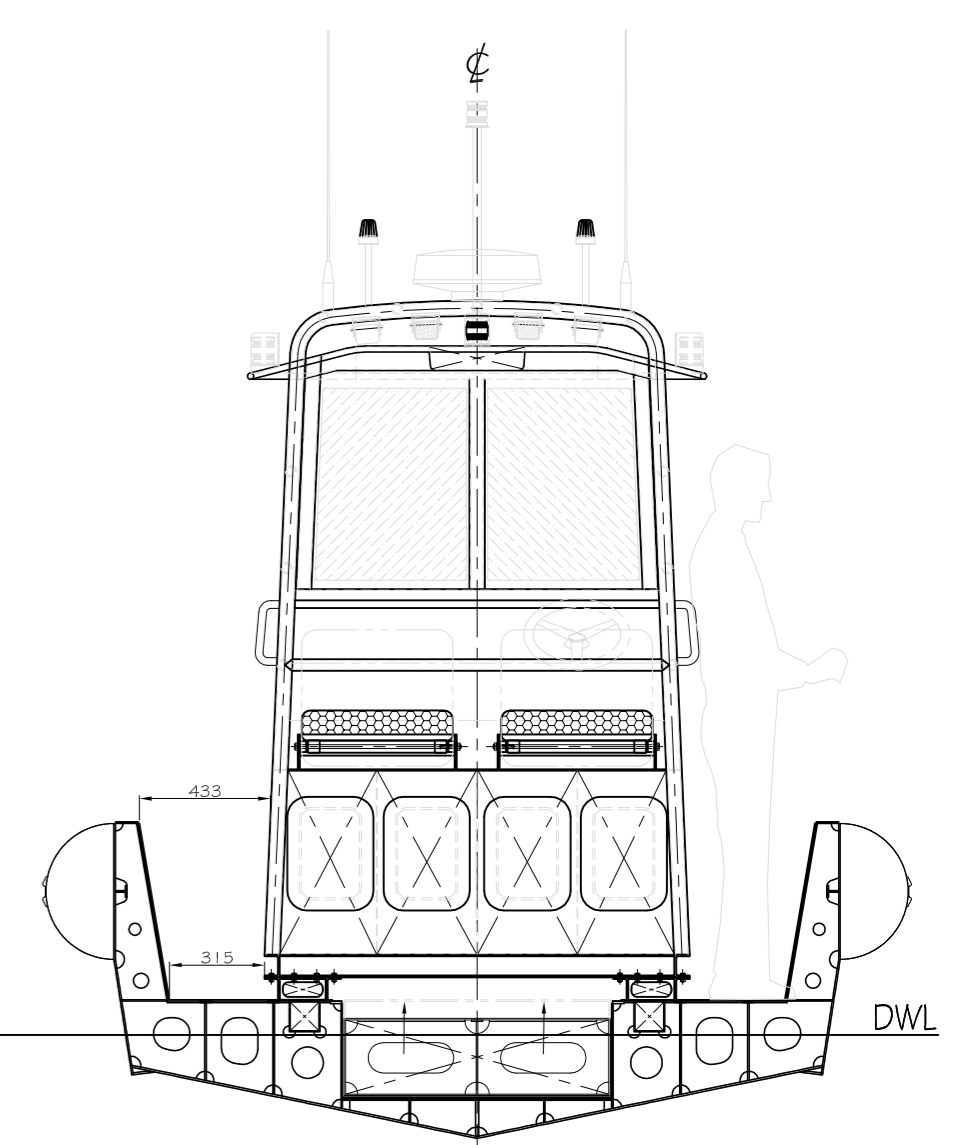
Front Elevation



DECK PLAN



INBOARD PROFILE



Typical Midship Section

Principal Characteristics

- LOA - 7.275m
- Length (alloy) - 7.055m
- DWL - 5.368m
- Beam (over tubes) - 2.885m
- Beam (alloy) - 2.442m
- Draft - 0.342m
- Deadrise - 12°
- Displacement - ~ 2400 Kg (Half Load)
- Power - Kodiak 496 HO Vortec V8, driving single Hamilton 241 Waterjet
- Sprint Speed - 42 Knots
- Cruising Speed - ~ 33 Knots
- Fuel Capacity - ~ 325 Litres
- Hull # Superstructure Material - Marine Grade Aluminium Alloy
- Air Collars (Tubes) - Hypalon

ISSUE	DATE	DESCRIPTION/MODIFICATION	CHECKED
B	22/05/2009	Final Updates according to Construction Plans	DDV
A	24/11/2008	Issue for Discussion	DDV

TITLE: General Arrangement Plan			
PROJECT: 7.3m T-Top Waterjet RIB			
CLIENT: Kanter Marine Inc. / DFO (Fraser River) Canada			
DATE: 20/11/2008	DRAWN: DDV	SCALE: 1:25 @ A1	
DWG #: DVD/090/001	SHEET: 1 of 1	ISSUE: B	

West Harbour, Auckland, New Zealand
 Tel/Fax: + 64 9 416 3070 Email: dvedesign@xtra.co.nz
 WWW: devilliersyachtdesign.co.nz