

# RIVER VISION

The Wabash. Our River, Our Community

---

## Community Forum on the Future of the Wabash River Corridor in Tippecanoe County



November 4, 2006

*what do you see?*

Publication Date: January 2007

Department of Forestry and Natural Resources &  
Living Laboratories on the Wabash (LLOW) project at Purdue University

# RIVER VISION

The Wabash. Our River, Our Community

---

This report was written by the group of graduate students that also planned and conducted River Vision:

David Caroffino  
Jonah Duckles  
Kristin Floress  
Leighanne Hahn  
Andrew Hopf  
Oun Joung Park  
Avantika Regmi  
Shannon Roges  
Aaron Thompson  
Denise Weinkauf  
Rebecca Zeiber

Under the direction of Dr. Linda Prokopy in Purdue's FNR 598V: Community Involvement in Natural Resource Management course, Fall 2006

This forum was organized as part of the Living Laboratories on the Wabash (LLOW) project at Purdue; LLOW is a project of the Center for the Environment at Purdue's Discovery Park

Funding or in-kind support for River Vision was provided by the Center for the Environment at Purdue's Discovery Park, Purdue's Office of Engagement, Wabash River Enhancement Corporation, Pioneer Hi-Bred International, Inc., Indiana-American Water Company, and Artistic Media Partners.

We would also like to thank our table facilitators from LLOW and the Landscape Architecture program at Purdue University.

Finally, thanks to Imagination Station for conducting the children's programming.

# RIVER VISION

The Wabash. Our River, Our Community

---

## Table of Contents

<b>1.</b>	<b>Executive Summary.....</b>	<b>1</b>
<b>2.</b>	<b>Introduction.....</b>	<b>2</b>
<b>3.</b>	<b>Getting Started.....</b>	<b>2</b>
3.1	Core Values Activity.....	2
	<i>Figure 1: Prioritization of Values Using Sticker Dots.....</i>	<i>3</i>
3.2	Introductions and Icebreakers.....	3
<b>4.</b>	<b>Identification of Key Values and Preliminary Ideas.....</b>	<b>4</b>
4.1	Identification of Key Values.....	4
	<i>Figure 2: Key Values Identified by Groups.....</i>	<i>4</i>
4.2	Relating Ideas to Values.....	4
<b>5.</b>	<b>Sketching Ideas.....</b>	<b>9</b>
<b>6.</b>	<b>Vision Storyboards.....</b>	<b>10</b>
6.1	Narrative Summary of Participant Storyboards.....	10
	<i>Figure 3: Map Areas.....</i>	<i>11</i>
6.2	Participant Storyboard No. 1.....	14
6.3	Participant Storyboard No. 2.....	16
6.4	Participant Storyboard No. 3.....	18
6.5	Participant Storyboard No. 4.....	20
6.6	Participant Storyboard No. 5.....	22
6.7	Participant Storyboard No. 6.....	24
6.8	Participant Storyboard No. 7.....	26
6.9	Participant Storyboard No. 8.....	28
6.10	Participant Storyboard No. 9.....	30
6.11	Participant Storyboard No. 10.....	32
6.12	Participant Storyboard No. 11.....	34
<b>7.</b>	<b>Identifying Location for Values and Goals.....</b>	<b>36</b>
	<i>Figure 4: Summary of Goal Prioritization.....</i>	<i>36</i>
<b>8.</b>	<b>Youth Program.....</b>	<b>45</b>
<b>9.</b>	<b>Conclusions.....</b>	<b>47</b>
<b>10.</b>	<b>Appendices.....</b>	<b>48</b>
	Appendix 1: Compilation of all Non-Prioritized Ideas (First Breakout Session).....	48
	Appendix 2: Ideas from Sketches Not Incorporated on Final Storyboards.....	50
	Appendix 3: Maps and Drawings from Youth Activities.....	51
	Appendix 4: River Vision Participant Evaluation Results.....	55
	Appendix 5: Instruction Provided to Each Participant.....	60

## **1. Executive Summary**

Over 100 community members and other interested stakeholders attended River Vision on November 4, 2006 on Purdue University's campus. The focus of River Vision was to develop a preliminary list of values, ideas and visions for the future of the Wabash River corridor between US-231 and I-65 in Tippecanoe County, Indiana. River Vision was organized and conducted by a class of graduate students in the Department of Forestry and Natural Resources at Purdue in conjunction with the Wabash River Enhancement Corporation (WREC) and Living Laboratories on the Wabash (LLOW).

The goal of the day was not to reach consensus but to gather community input about the future of the Wabash River to inform the master planning process for the corridor. WREC will select a planning firm to develop the master plan for the corridor in early 2007; this firm will use the ideas and visions generated by participants in River Vision as a starting point for their work.

Even though the goal was not consensus, a surprising amount of consensus among participants was evident throughout the day. The major issues of interest among participant groups were environment and recreation. These issues are reflected in the final visions developed by each group of participants. Additional themes that were important to participants were social/cultural, wildlife, economics, heritage, education, community/connectivity, and aesthetics/scenery/beauty. Many creative and innovative ideas emerged throughout the day from both the adult programming and concurrent youth programming. Some sample ideas include a water taxi, trails connecting cultural amenities, an Amelia Earhart museum, places to eat along the corridor, creation of destinations at the confluence of the Tippecanoe and Wabash Rivers, and a swimming beach.

In general, several patterns emerged within the vision storyboards. These patterns focus on the districts that exist within the corridor that are geographically related and share similar opportunities and constraints for the future. A spatial analysis of where participants wanted to see different types of activities showed some trends, e.g. economic development, quality of development and social and cultural values are preferred in the downtown areas while environmental management and other values are preferred at multiple places along the corridor.

It is not possible to summarize all the outcomes from the day's work; however, it is hoped that the ideas generated during River Vision will serve as a starting point for future conversations and plans about the future of the Wabash River corridor.



## **2. Introduction**

River Vision was a public forum held on Saturday, November 4<sup>th</sup>, 2006 to elicit stakeholder values, ideas and visions regarding the Wabash River corridor area. River Vision brought together primarily members of the Lafayette-West Lafayette and Tippecanoe County communities to the Shively Pavilion on Purdue University's campus to collaborate and develop their ideas for the future of the Wabash River corridor. This event was sponsored by the Wabash River Enhancement Corporation (WREC), a non-profit organization, Living Laboratories on the Wabash (LLOW), the Cities of West Lafayette and Lafayette, Tippecanoe County, and Purdue University's Center for the Environment. In addition, a variety of local community business organizations provided funding or in-kind contributions.

The goals of River Vision were to develop some preliminary ideas and visions in anticipation of a master planning effort to be conducted in 2007 by WREC. This was accomplished through a series of hierarchical sessions of value elicitation and vision building over the course of five hours. Approximately 100 attendees identified their personal values regarding the Wabash, and then worked towards developing a shared vision within small groups.

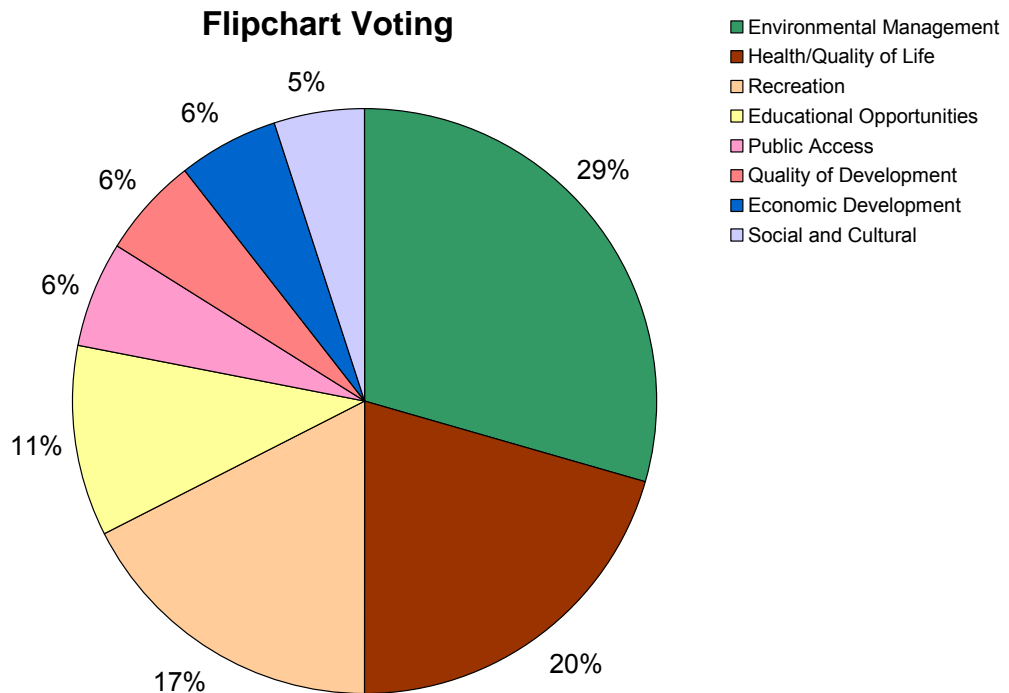
A variety of visions were developed, with groups focusing on the social, cultural, educational, economic, aesthetic, ecological and recreational opportunities that the Wabash River and adjacent area affords. The visions developed through this forum are being shared through this report with the Cities of West Lafayette and Lafayette, Tippecanoe County, WREC and other interested stakeholders.

## **3. Getting Started**

### **3.1 Core Values Activity**

As participants entered Shively Pavilion, they were given three dot stickers along with their registration packets. These dots were used as a means to vote for their personal core values regarding the Wabash River. The core value categories were derived from WREC's strategic planning done in the summer of 2006 and were: social and cultural; quality of development; health/quality of life; public access; recreation; educational opportunities; economic development; and environmental management. Participants could place their dots upon any of eight large sheets of papers to prioritize what they valued about the river. This activity was intended to initiate participant thinking about why they came to the forum and what they value about the river. A total of 200 dot stickers were placed. The number of dots placed on each value and the corresponding percent of the total votes are seen in figure 1. Values ranged from 5% to 29% with the environmental management category receiving the largest percent of the votes.

Figure 1: Prioritization of Values Using Sticker Dots



### 3.2 Introductions and Ice-Breakers

Linda Prokopy, assistant professor of natural resources planning at Purdue University, introduced River Vision and its purpose. After running through an overview of the day's planned activities, she turned the microphone over to Ron Turco from LLOW for a Jeopardy style game which included Jan Mills, Mayor of West Lafayette; Tony Roswarski, Mayor of Lafayette; and K. D. Benson, County Commissioner as contestants. Contestants were asked to answer questions about the Wabash including its history and ecology, along with identifying other Indiana river cities. In addition to acting as an ice-breaker for the breakout sessions, Jeopardy served as a tool to help the participants become aware of facts about the river they may not have known. After the game, a video of an airplane flight over the Wabash River was shown to get the participants thinking about the surrounding land uses and locations of places near the river. Although this segment of the forum lasted less than one hour, it was an important component because it set a positive mood for the participants and helped turn the focus to the actual work for the day.

## 4. Identification of Key Values and Preliminary Ideas

### 4.1 Identification of Key Values

For the remainder of the day, participants worked with a facilitator in groups of 7-8 people. A detailed description of the process they went through is included in appendix 5.

In the first breakout session, participants at each table first brainstormed key values about the Wabash River. They then collectively grouped these values into groups of related values. Each table then had to select 3-5 values that they felt were the most important. The predominant key values that emerged are shown in table 1. As can be seen in table 1, ten of the eleven groups identified natural systems/ecology and recreation as key values. Additional values that were generated by tables but did not make it into the final list of key values included: youth buy-in, branding/recognition, and highlight downtown.

Figure 2: Key Values Identified by Groups

Key Value	Number of Groups
Social/Cultural	2
Wildlife	2
Economics	3
Heritage	4
Education	4
Community/Connectivity	5
Aesthetics/Scenery/Beauty	6
Natural Systems/Ecology	10
Recreation	10

### 4.2 Relating Ideas to Values

After discussing values, the groups brainstormed ideas for the future of the corridor. All ideas were recorded, no matter how or if they fit in with the group's values. After brainstorming ideas, groups selected some key ideas that related to the key values they identified earlier in the process. These ideas with the corresponding values are listed in the subsequent pages. A number of ideas emerged through this process and many of them fit within several of the key values. For example, trails were identified by different groups as contributing towards social/cultural, wildlife, aesthetics, natural systems and recreation values. In the following lists, numbers in parentheses beside an idea indicates the number of groups that had a similar idea.

**Ideas for the Wabash and the Values They Represent; continues for 5 pages**

**Social / Cultural (2 Groups)**

- Cultural Social value underlying almost all themes/ideas
- Historic/Interpretive trails
- Cultural centers
- Connecting to communities
- Sculpture and Art
- Overlook Vista
- Learning Areas
- Cultural Heritage
  - History Museums
  - Cultural Museums (art, etc.)
  - Public Performance Venues

**Wildlife (2 Groups)**

- Trails
- Green Spaces
- Better Use of Floodplain
- Dredging with concern for wildlife
- Natural buffer strips
- Protective easements

**Economics (3 Groups)**

- Aesthetic improvements
- Mixed Use Destination (eating, museum, shopping) (2)
- Inter-jurisdictional co-op & unified vision
- Put whole river into its own local authority
- Carefully considered private bricks & mortar development in urban core consistent with other goals
- Study precedents from other river projects
- Better spatial connections between urban and green space

**Heritage (4 Groups)**

- Inter-jurisdictional cooperation & unified vision
- Preservation
- Connection with Community
- Museum-River Heritage
  - Spiritual
  - Transportation
  - Central Hub
  - Research
- Educational & curriculum development

**Education (4 Groups)**

- Educational facilities
- Local science/history/anthropology exhibits and activities
  - Educational Pavilion

- History/Science museums
  - Anthropology related activities
  - Cultural museums exhibits
- Educational Tours (like Delphi)
- River Access
  - Field Tours
  - Boat Tours
- Curriculum
  - Related to river heritage, ecological systems, wildlife and their habitats
- Interpretive Kiosks (2)
  - Labelled Signage
  - Open access
- Education Techniques (have old kids teach young)

### **Community / Connectivity (5 Groups)**

- Community connections
  - Highlight and connect cultural/national features w/o commercialization
- String of Pearls (connecting cultural sites)
  - Spiritual Importance (heritage and today)
    - Connecting to Prophets Town
    - Youth Groups and River-Focused Churches
  - History
  - Geological
  - Biological
- Improve urban core
- Embrace neighborhood
- Planned Celebrations/Events
- Cultural Center
- Public open space near river
- Schools
  - Field Tours
  - Educational and curriculum development
- Inter-jurisdictional cooperative & unified vision
- Sustainable Development
- Zoning
- Commercial Development
- Mixed Use Destination (eating, museum, shopping)
- Sculpture and Art
- Balance
- Recreational opportunities
  - Boat Rentals -Tours
  - Camping
  - Trail Corridors

### **Aesthetics / Scenery / Beauty (6 Groups)**

- Inter-jurisdictional cooperation & unified vision
- Whole river put in its own local authority
- Conservation easements/land trusts along corridors (3)

- Green space/Park development
- Better commercial use
- Visual quality
- Art
- Natural buffer strips
- Listening (hear) river
- Better spatial connections between urban and green space (more green space)
- Multi-use trails – accessible (3)
- Better public views
- Facilities (restroom) river focused
- Water Quality
  - Regulate Dumping
  - Eliminate Combined Sewer Overflows
  - Eliminate Storm Drains

### **Natural Systems / Ecology (10 Groups)**

- Sustainable development
- Inter-jurisdictional cooperative & unified vision
- Conservation easements/Land trusts along corridor
- Make corridor more healthy for wildlife
- Reduce trail access
- Multiple interpretation/education facilities, programs, signage
  - Education
  - Educational and curriculum development
- Art (current and historical)
- Facilities (restroom) river focused
- Access
  - Transportation to natural areas
  - Boat tours
- Restoration
  - Flood plain
  - Wetlands
  - Riparian buffer
    - Use Native Tree Variety Buffers
  - Edible Fish
  - Science Standards
  - Tributaries/Upstream Cleaned
- Protect natural areas
  - Flood plain
  - Wetlands
  - Riparian buffers
  - Sensitive area acquisition and/or protection
  - Preservation of peace and quiet
  - Wildlife protection
- Improve water quality
  - Sediment & run off control
  - Bank stabilization & erosion control

- Runoff/reduce impervious surfaces
- Enactment/Enforcement of anti pollution laws
  - Limit non-point source pollution (farmland, etc.)
  - Minimize combined sewer overflows
  - Regulate Dumping
  - Eliminate Storm Drains
- Coordination with State-wide agencies entities
- Clean up of point source discharges
- River Clean-ups

### **Recreation (10 Groups)**

- Open public access
- Inter-jurisdictional cooperation & unified vision
- Both active & passive recreation
- Encourage physical activities for all ages (par course/life course amenities)
- Multiple public interpret/education kiosks facilities/programs/signage
- Maps, informational signage
- More infrastructure for recreation entertainment opportunities
- Sustainable-non consumptive use
- Economic benefits of river
- Environmental education opportunities
- History
- River Access
  - Information regarding river access
  - Beach
  - Snorkelling
  - Boating, boating rentals
  - Piers Docks Overlooks
  - Water Travel
  - Fishing, more fishable
  - Recreational boating and public access every half mile
  - Bring people physically closer to river
  - Animal access for pets
  - Rehabilitate existing water access points, add public restrooms
  - Water Trail
  - Boating Tours
- Trails
  - Multiuse trails
  - Construct, improve and enhance trails
  - Extend Trail Corridors: 20 – 30 Miles, more extensive trails
  - Complete trail system
  - Connect trail system
  - Heritage Trails and Museum
- Quality
  - Water Quality
  - Consistent, Debris-free, navigable river (erosion control)
  - Eco Friendly
  - Clean-Up Outdoor Recreation areas

- River Clean-ups
  - Report water quality
  - Science Standards
  - Eat Fish
- Social
  - More community engagement green space
  - Concert Venue
  - Civic art interactive open space
- Linking CAE W. LAF with sports
- Sustainable recreation development, infrastructure facilities (restrooms)
  - Fishing
  - Canoeing
  - Camping
- Additional Sports Opportunities
  - River Dredging
  - River Dams to enhance recreational opportunities
  - Sports Stadium
- Commercial Development
  - Destination – Eating, museum, shopping
- More Dining/Food Vendors on river
  - Bars
  - Small Vendors
  - Restaurants
  - Summer Cafés
  - Hot Dog Stands

## 5. Sketching Ideas

The second breakout session utilized graphic vignettes as a means for participants to begin developing their ideas. Twenty-five different pictures of the Wabash River corridor were provided for each table, and each participant was asked to illustrate (using both words and pictures) their ideas for how the Wabash River corridor and adjacent areas should be changed or better used and enjoyed. Once these drawings were complete the facilitator led a discussion in which participants could summarize their drawings for the group. The group then discussed and identified which 3-5 ideas best represented the vision of the group. Additional ideas that were not selected during this process were retained and a summary of the ideas on these additional drawings is in Appendix 2.

A spokesperson from each group then presented the efforts of the first and second breakout sessions, describing the themes and ideas developed by their group. The selected drawings of the group were projected for viewing by the entire forum as the presenter explained the ideas that the group had developed.



## **6. Developing Vision Storyboards**

The third and final breakout session expanded on the drawings from the second breakout session. A table sized map of the Wabash River corridor from I-65 to US-231 was distributed to each table. The group then taped their 3 – 5 selected drawings on the corners of the map, and decided where along the Wabash River their ideas could be best incorporated. They assigned a unique symbol to each drawing and placed that symbol directly on the table sized map in the best suited location. Groups were allowed to expand upon their drawings and note all the areas where their ideas could be carried out. Finally, each group developed a sentence or a phrase that best described their vision for the Wabash River corridor. These vision statements were recorded on the table map along with the main values of the group. These final table maps were collected and used for the primary analysis of participant visions for the future of the Wabash River.

River Vision was structured to combine participant values with their ideas for the future of the Wabash River Corridor in Tippecanoe County. The vision storyboards are the synthesis of these efforts, developed independently by the 11 participant groups. They document both a broad vision and specific ideas for the future of the Wabash River Corridor. Review of the vision storyboards demonstrated a significant level of consensus among participant groups. In section 6.1, a narrative is presented that describes many of the ideas developed at River Vision. For a complete summary of the vision storyboards developed by all 11 groups, refer to sections 6.2 through 6.13.

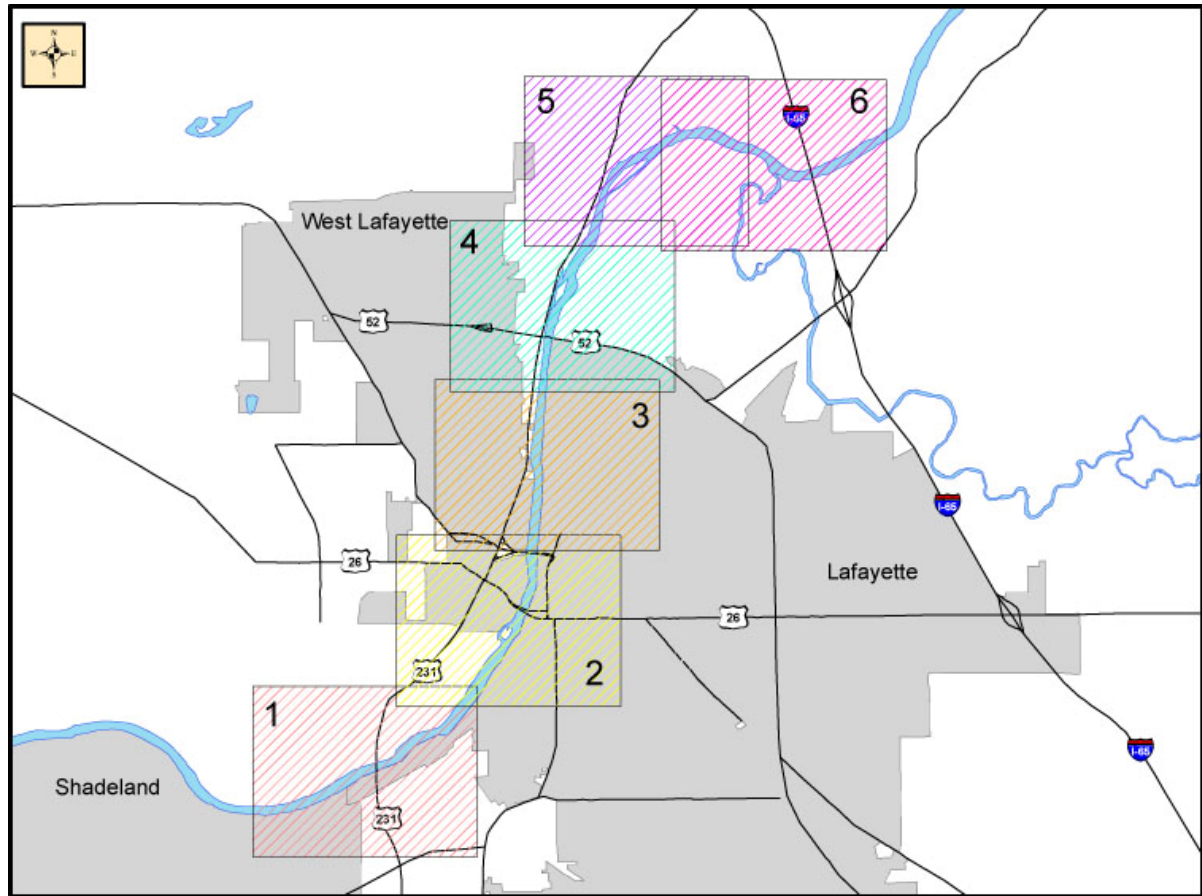
### **6.1 Narrative Summary of Vision Storyboards**

Repeated throughout many of the group vision storyboards is the idea of creating an ecologically sustainable corridor containing social/cultural and recreational amenities. The visions focus on creating a healthy river that benefits the communities through which it passes by providing economic development opportunities and serving as a focal point for the region. Access and connectivity of river features are promoted as key to engaging residents and visitors with the river.

Several ideas were put forward that provide structure both conceptually and physically to accomplishing these goals. Several groups focused on districts as they developed a vision; suggesting areas of the corridor that could be viewed conceptually as sharing a common presence along the corridor.

The following summary of the vision storyboards focuses on different map areas which can be seen in figure 3.

Figure 3: Map Areas



### Map Area 1

This portion of the Wabash River Corridor is an area characterized a lack of development on both sides of the river. It is bounded on the north by the waste water treatment facilities of Lafayette and West Lafayette on their respective sides of the river and the Eli Lilly facility on the east side of the river to the south. It is crossed by the US 231 bridge and is in close proximity to the Purdue University campus on the west side of the river.

Ideas included in vision storyboards for Map Area 1 utilize environmentally sensitive design to enhance the natural areas. Several ideas suggest the creation of a wildlife area that incorporates wetland areas that function as flood storage and wildlife nesting areas. In addition, riparian buffers and berms would be established along the west side of the river to control erosion and enhance the scenic beauty. Incorporated into these ideas are suggestions for low impact trails on both sides of the river with connections to Fort Ouiatenon and the creation of a public access point or park.

## Map Area 2

Map area 2 is the most intensely developed area in the Wabash River Corridor in Tippecanoe County. It includes downtown Lafayette, the Wabash Landing / Levee area of West Lafayette, the Wabash Avenue Neighborhood (south of downtown on the east side of the river) and 3 bridges. As the urban hub of the river corridor, this map area was the focus of much of the work done at River Vision. Ideas included in vision storyboards for Map Area 2 include:

- Address the need for environmental clean-up of the river by removing the combined sewer overflows and eliminating odor from the waste water treatment facilities.
- Establish a direct physical connection from downtown Lafayette to the river by decking over the railroad corridor from Wabash Avenue to McCalister Park.
- Enhance recreational opportunities by expanding the current trails and utilizing retaining walls to create a walk along the river.
- Provide for water based recreation by adding an aquatic center for the community, a crew slough, canoe livery and rentals, and a swimming beach.
- Support economic development along the river that could include small shops, vendors on the pedestrian bridge, outdoor dining, and a convention center.
- Create a permanent location for cultural activities and events that could support a museum, educational facilities, and community artists.
- Look for opportunities to empower the Wabash Avenue Neighborhood by enhancing Shamrock Park and providing connection to downtown.
- Emphasize the visual character of the river corridor by enhancing views and bridges.

### Map Area 3

This portion of the corridor stretches from the Harrison Bridge north to the Lafayette Municipal Golf Course. The west side of the river has been developed with multi-family housing along the riverfront and Mascouten Park further north. The east side of the river is dominated by McCalister Park and the Lafayette Municipal Golf Course. Ideas included in vision storyboards for Map Area 3 focus on preserving and enhancing the natural habitats by utilizing riparian buffers and erosion control measures. In addition, the improvement of access and recreation opportunities was a key concern with several ideas focused on the potential for restoration and expansion of Mascouten Park.

### Map Area 4

Map Area 4 extends from the Lafayette Municipal Golf Course to the Indiana Veterans Home. The US 52 Bridge intersects this area and covers most of SR 43 that runs parallel to the river north of West Lafayette. Ideas included in vision storyboards for Map Area 4 establish riparian buffers and multipurpose trails along both sides of the river. Several ideas focus on environmentally friendly and safe recreation on the river, including suggestions for establishing rules for use of the river that support non-motorized boating.

### Map Area 5

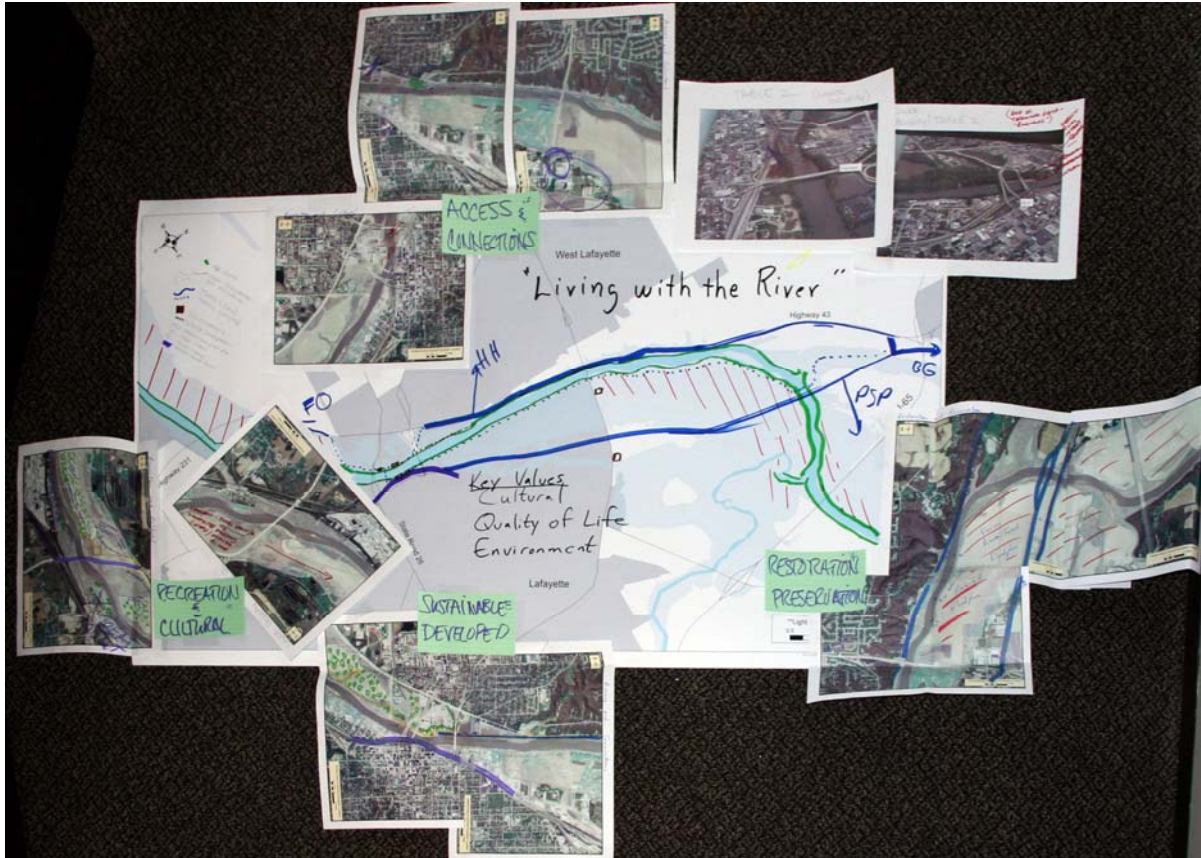
Map Area 5 extends from the Indiana Veterans Home to the North 9<sup>th</sup> Street Bridge. This area includes the Tippecanoe County Amphitheatre and Davis Ferry Park. Ideas included in vision storyboards for Map Area 5 emphasize the importance of creating a destination at Davis Ferry Park. Improving access to the river, providing parking and picnic areas, creating a trail connection to Prophetstown State Park and providing access to the Heritage Trail were all suggested improvements. Building upon ideas proposed for Map Areas 3 & 4, establishing a riparian buffer that facilitates erosion control and supports wildlife was a suggestion made by many groups.

### Map Area 6

Many groups determined that this portion of the corridor functionally extended beyond the original scope of River Vision to include the confluence of the Tippecanoe River and the Wabash River. The Interstate 65 bridge intersects this portion of the corridor and Prophetstown State Park is located within the expanded definition of the area. Ideas included in vision storyboards for Map Area 6 support the restoration activities proposed along the river in other map areas. In addition, the creation of a recreation destination at the confluence of the Tippecanoe and Wabash Rivers was emphasized. Participants suggest the creation of a multi-purpose destination with river access, shops, swimming beach, and pedestrian bridges that link and expand the facility across the waterways. This destination would serve as a location for cultural events and celebrations. One additional area was suggested at the confluence of the Wildcat Creek and the Wabash River to serve as a public access point and education facility for the Wabash River.

## 6.2 Participant Storyboard No. 1

### Vision Statement: Living with the River



#### Key Values

- Cultural
- Quality of Life
- Environment

#### Themes

- Access and connections
- Restoration and preservation
- Sustainable development
- Recreation and cultural

#### Ideas

- Utilizing new and existing trails to connect the communities and significant cultural amenities along the corridor. Establishing a riparian buffer with integrated multi-purpose trails on both sides of the river is predominant in this storyboard.

### **Map Area 1**

- Protected floodplain – restored wetlands
- Trail connection to Fort Ouiatenon with appropriate facilities (parking)

### **Map Area 2**

- Deck over railroad corridor from Wabash Avenue to McAllister Park
- Outdoor theatre at Tapawingo Park
- Sculpture garden on west side of river north of Tapawingo Park
- Crew slough development on both sides of river downtown & north of Harrison Bridge on west side of river
- New development on both sides of the river in downtown

### **Map Area 3**

- Restoration and expansion / development of Mascouten Park
- Multipurpose trails on both sides of river

### **Map Area 4**

- Riparian buffer along both sides of river
- Multipurpose trails on both sides of river
- Farm / Prairie / Forest Floodplain – restoration of the floodplain to a more natural condition
- Development on east side of river at US 52

### **Map Area 5**

- Riparian buffer along both sides of river
- Open space preservation / restoration on southeast side of river
- Trail connection to Battleground

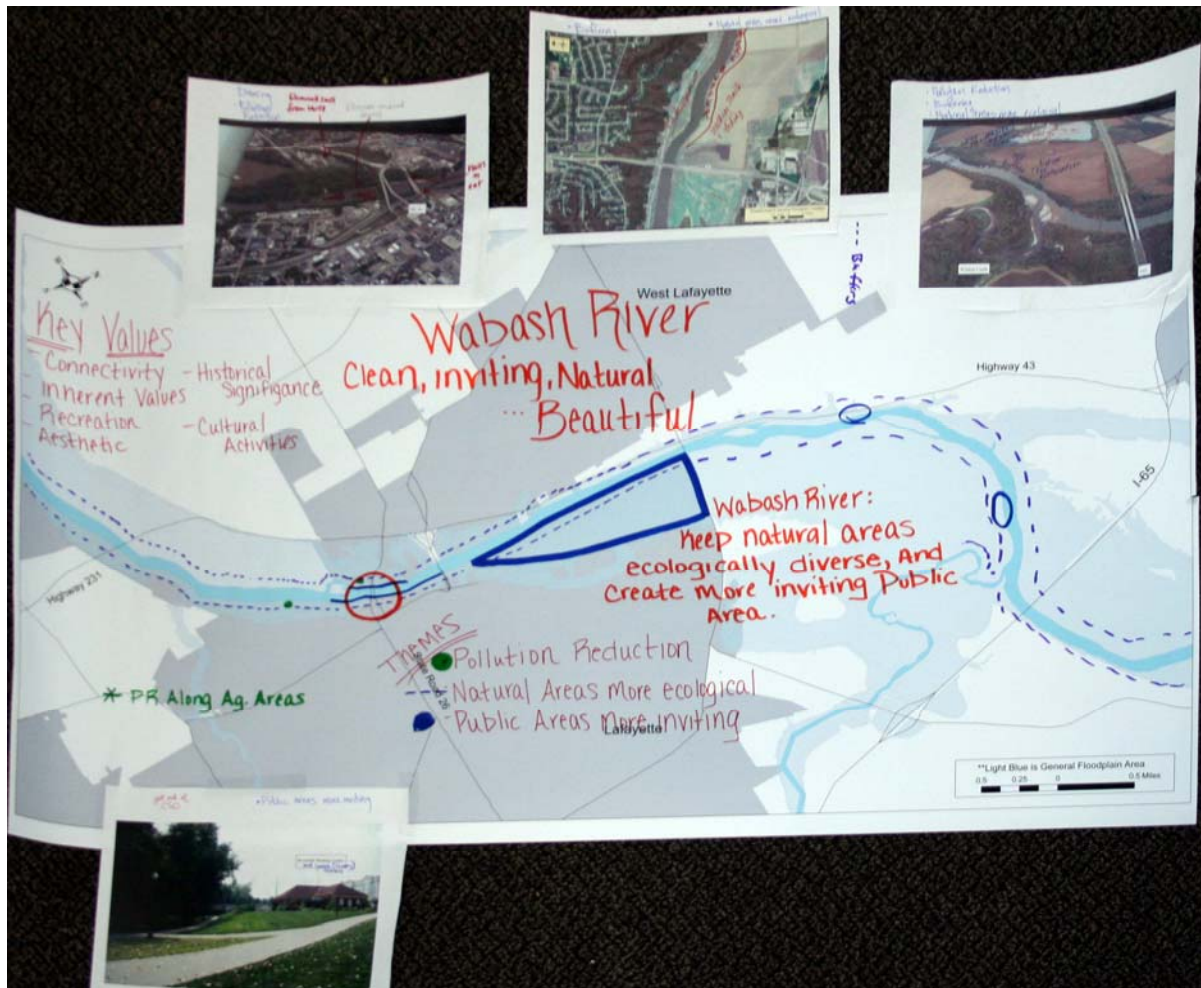
### **Map Area 6**

- Open space preservation / restoration on southeast side of river
- Trail connection to Prophetstown State Park



## 6.3 Participant Storyboard No. 2

Vision Statement: Wabash River – Clean, Inviting, Natural, Beautiful



### Key Values

- Connectivity
- Inherent values
- Recreation
- Aesthetic
- Historical significance
- Cultural activities

### Themes

- Pollution reduction
- Natural areas more ecological
- Public areas more inviting

## **Ideas**

- Focus throughout is on the ecological function of natural areas corridor wide while creating opportunities for the public to access the river.

## **Map Area 1**

- Buffers

## **Map Area 2**

- Places to eat along the river
- Canoe livery and rentals
- Eliminate smell from waste water treatment plant
- Eliminate combined sewer overflow
- Buffers

## **Map Area 3**

- McCalister Park & Lafayette Municipal Golf Course: Keep natural areas ecologically diverse and create more inviting public area.
- Buffers

## **Map Area 4**

- No development
- Walking and biking trail
- Buffers
- No development along North River Road (SR 43)

## **Map Area 5**

- Veterans home / Amphitheatre Area: Public areas more inviting
- Buffers

## **Map Area 6**

- Salt management from roads
- 180 ft. buffer
- Native tree restoration
- SE side of the river: Improve access at the 9<sup>th</sup> street bridge to create a more inviting area for public



## 6.4 Participant Storyboard No. 3

Vision Statement: Bringing Nature & People Together



### Key Values

- Wildlife
- Scenery
- Social / cultural
- Recreation

### Themes

- Access
- Setbacks / buffers
- Trails
- Erosion control
- Downtown riverbank development

### Ideas

- Vision focuses on building up the resources of the downtown riverfront and addressing critical issues of buffering and erosion control throughout the corridor.

## RIVER VISION

The Wabash. Our River, Our Community

---

### Map Area 1

- Erosion control using berms along west side of river in floodplain
- Riparian zone developed along west side of river
- Multipurpose, handicap accessible boat ramp / access point at Shamrock Park
- Wildlife refuge extending south from / including Shamrock Park
- Park & trail extending south along west side of river

### Map Area 2

- Park & trail extending south along west side of river
- Park along east side of river extending from Shamrock Park to SR 26 bridge
- Wetlands on west side of river south of SR 26
- Retaining walls and trails on both sides of the river from SR 26 to Harrison bridge
- Revitalize Levee Plaza
- Aquatic center for rowing (teams), kayaking, canoeing and summer camps on west side of river
- Mixed use commercial development on east side of river south of Harrison bridge

### Map Area 3

- Improved access at Mascouten Park
- Erosion control on both sides of river
- Revitalize west side of river

### Map Area 4

- Buffers / setback; riparian & wildlife areas on east side of river

### Map Area 5

- Erosion control on NW side of river
- Buffers / setback; riparian & wildlife areas on NW side of river (north of 9<sup>th</sup> street extension)

### Map Area 6

- Not an area of focus

## 6.5 Participant Storyboard No. 4

Vision Statement: On the Banks of the Wabash, Not So Far Away



### Key Values

- Water quality
- Natural environment / wildlife
- Education
- Cultural heritage
- Recreation

### Themes

- Control runoff / combined sewer overflows
- Cultural & educational facilities
- Environmentally sensitive design
- Recreation
- Making the river more attractive & convenient

### Ideas

- Focus on environmentally sensitive design for the entire corridor to improve both access to river activities and improve the scenic quality of the river.

### **Map Area 1**

- Environmentally sensitive design
- Make river more attractive & convenient

### **Map Area 2**

- Remove combined sewer overflow
- Cultural center / museum located along SR 26 on west side of river
- Educational pavilion located in Tapawingo park
- Boat rental downtown on east side of river
- Recreation opportunities north of Harrison bridge on west side of river
- Restaurant with overlook on east side of river

### **Map Area 3**

- Environmentally sensitive design for McCalister Park and Lafayette Municipal Golf Course
- Remove combined sewer overflow on west side of river
- Make river more attractive & convenient on east side of river

### **Map Area 4**

- Remove combined sewer overflow
- Make river more attractive & convenient on east side of river

### **Map Area 5**

- Remove combined sewer overflow
- Make river more attractive & convenient on east side of river

### **Map Area 6**

- Remove combined sewer overflow
- Enhance recreation opportunities along river at 9<sup>th</sup> Street extension

## 6.6 Participant Storyboard No. 5

Vision Statement: Connecting Our Past & Our Future



### Key Values

- Attraction / tourist destination
- Community focus
- Environment / nature / ecology
- Beauty / visual quality
- Recreation

### Themes

- Branding / recognition
- Economic development
- Improve urban core
- Embracing neighbourhood
- Water taxi

### Ideas

- The entire corridor (extending beyond from Prophetstown to Fort Ouiatenon) is served by a water taxi which connects the 5 districts defined in the storyboard, which are (from north to south) Recreation destination, Gateway, Ecologically Friendly Education and Recreation, the Landing, and Embrace Neighborhoods.

### Map Area 1

- River access
- Civic development – along the west side of the river

### Map Area 2

- District: Embrace the Neighbourhood
- Create vistas down the river by clear cutting trees on Turtle Island at Shamrock Park to eliminate debris collection.
- Construct fishing piers and a boat launch at Shamrock Park / Turtle Island
- Create a connection to the island for picnicking
- Establish a trail that links island to downtown
- District: The Landing – where everything comes together
- Entertainment and economic development on east side of river in downtown
- Create a beach / fountain at Tappewingo Park
- Lunch on the Wabash to be served on the Meyers Pedestrian Bridge
- Enhance bridges
- Create a branding opportunity as “Old Town Lafayette” with shops that overlook the river on the east side of the river south of the Harrison Bridge
- Environmentally friendly recreation – focus on multi-purpose spaces that include river access, shops, swimming beach and parking.
- Water taxi stop

### Map Area 3

- District: Ecologically Friendly Education and Recreation

### Map Area 4

- District: Ecologically Friendly Education and Recreation
- Enhance US 52 bridge
- Environmentally friendly recreation development at Mascouten Park & Veteran’s home / Amphitheatre area

### Map Area 5

- District: Gateway
- Water taxi stop at 9<sup>th</sup> Street extension – old town landing with boardwalk, piers, and benches
- Multi-use seasonal living history and sporting events opportunities

### Map Area 6

- District: Recreation Destination – confluence of the Wabash River and the Tippecanoe River
- Creation of multi-purpose destination that include river access, shops, swimming beach and parking.
- Location for social events – fireworks, celebrations
- Creation of multiple pedestrian bridges that link the banks of both rivers, enhancing access to all areas of the park



## 6.7 Participant Storyboard No. 6

Vision Statement: Restoring, Preserving, & Appreciating Our Natural History



### Key Values

- Nature
- Recreation
- Education
- History

### Themes

- Access for recreation and education
- Natural restoration (forests, wetlands, prairies)
- Educational and Historical facilities and programs

### **Map Area 1**

- Forests and wetlands on both sides of the river
- Correction of the 231 bridge to account for natural water flow

### **Map Area 2**

- Southern area forests and wetlands on both sides of the river
- Between SR 26 bridge and Harrison bridge – boathouse on the west side of river, pedestrian bridge over railroad corridor to connect downtown neighbourhoods to Wabash Heritage Trail, and trail on the east side of the river

### **Map Area 3**

- Not an area of focus

### **Map Area 4**

- Wetlands, forests and trails

### **Map Area 5**

- Wetlands, forests and trails

### **Map Area 6**

- Wetlands, forests and trails
- Public access for education and research near the area where Wildcat Creek flows into the Wabash
- Educational facility on the west side of the river near Highway 43 or near Wildcat Creek



## 6.8 Participant Storyboard No. 7

**Vision Statement:** Make the Wabash the Backbone of the Area – A Wabash River community, envisions an open space, that is inclusive of aesthetics, ecological, recreation, and economic leisure for people of all ages, and accessible to every person



### Key Values

- Not given on Visioning Story Board but included in key values area

### Themes

- Community Integration and Green Space
- Public Education
- Recreation
- Resource Protection
- Economics

### Ideas

- All themes are listed multiple places up and down the river (see picture). The attached pictures are used to describe locations for the specific ideas. Community integration and green space is an overriding theme in this group with no specific location.

### Map Area 1

- Recreation – have a public access points accessible to everyone with picnic areas and interpretive centres
- Themes also included without picture for specific idea – Resource protection, community integration and green space, economics, and public education

### Map Area 2

- Economics – rename the pedestrian bridge the friendship bridge. On bridge have carts (example hotdog stands) available by license to anyone who wishes to sell snack foods. Make them available to spouses of internationals, so that they can sell international foods
- Themes also included without picture for specific idea – Resource protection, community integration and green space, recreation, and public education

### Map Area 3

- Not an area of focus
- Themes included - Resource protection, community integration and green space, recreation, and public education

### Map Area 4

- Public Education – utilize municipal golf course for trails and closer contact with the river, large interpretive centre, use the greens and exciting holes for smaller interpretive areas, incorporate more trees/green space, and a public boat launch
- Resource protection – The area just northwest of Highway 52 no more development and make it into green space
- Themes also included - Community integration and green space, recreation, and economics

### Map Area 5

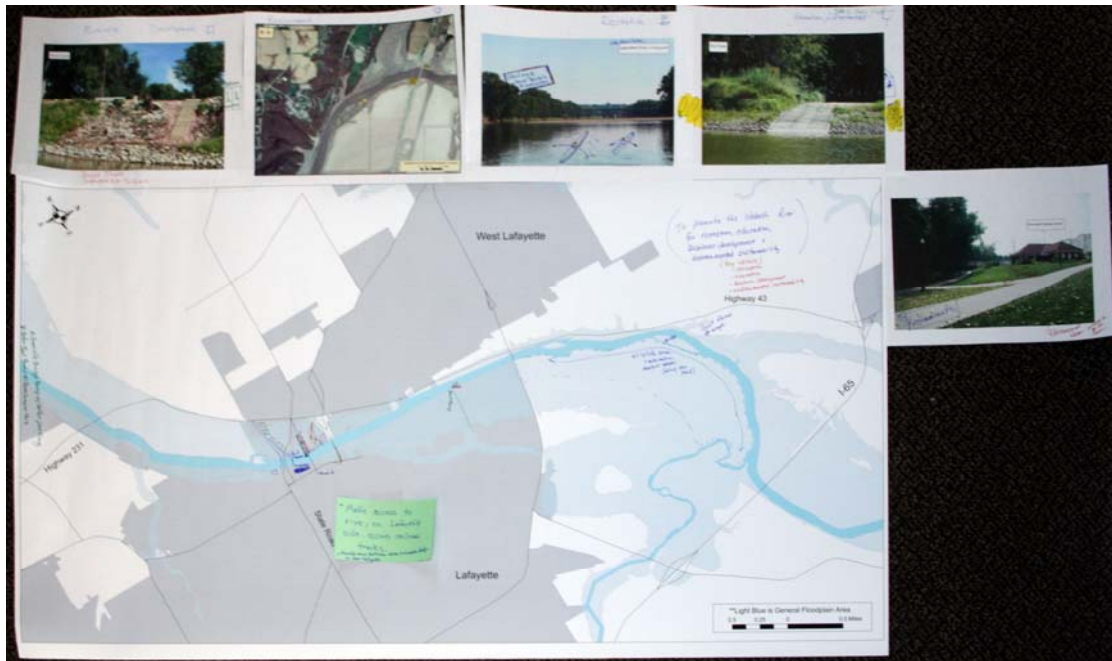
- Not an area of focus
- Themes included - Resource protection, community integration and green space, recreation, economics and public education

### Map Area 6

- Not an area of focus
- Themes included - Resource protection, community integration and green space, recreation, economics and public education

## 6.9 Participant Storyboard No. 8

**Vision Statement:** To promote the Wabash River for recreation, education, business development and environmental sustainability



### Key Values

- Recreation
- Education
- Business Development
- Environmental Sustainability

### Themes

- Recreation
- Education
- Business Development
- Environment

### Ideas

- The Education theme did not have a specific placement on the story board. It included the ideas of public access points having signs and restrooms.

### Map Area 1

- East of Map area 1 – Better boat ramp at Ross Camp or Park
- Granville Bridge Ramp with better parking

### Map Area 2

- Make access to river on Lafayette side, across from railroad tracks. Develop area between SR26 and Harrison Bridge in West Lafayette. Restaurants, Boat Tours and Sales, also educational ideas.
- Business Development- Boat Tours and interpretive signs. Public access should have bathrooms

### Map Area 3

- Boat Ramp just south of the Municipal Golf Course
- Recreation – Skulling and canoe rentals and instruction

### Map Area 4

- On Lafayette side – Wildlife area and education markers all along a trail that runs along that side

### Map Area 5

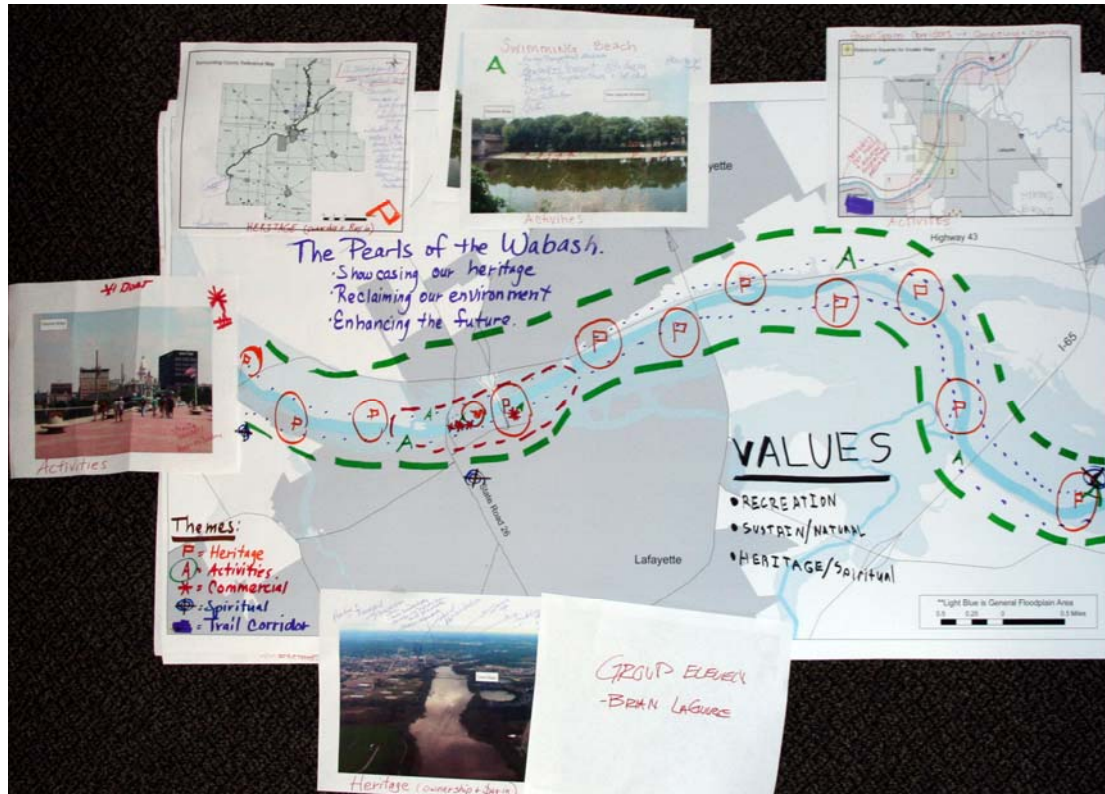
- On Lafayette side – Wildlife area and education markers all along a trail that runs along that side
- Boat ramp at the amphitheatre and bridge near that area also

### Map Area 6

- On Lafayette side – Wildlife area and education markers all along a trail that runs along that side

## 6.10 Participant Storyboard No. 9

**Vision Statement:** The Pearls of the Wabash: Showcasing our heritage, reclaiming our environment, and enhancing the future



### Key Values

- Recreation
- Sustain/Natural
- Heritage/Spiritual

### Themes

- Heritage/Spiritual
- Activities
- Commercial
- Trail Corridor

### Ideas

- Heritage – Listed along the entire corridor was the idea of a string of pearls: a chain of spiritual camps. Connect the youth groups and adult service groups. Illustrate the natural history, American and Christian religious history, Native American, all religions.
- Trail Corridor – This idea was expressed along the whole corridor also. The idea of green space corridors for trails and animal migration passages with mile markers along river and also canoeing, camping, hiking, and biking activities.

## RIVER VISION

The Wabash. Our River, Our Community

---

- For the Activities theme there was a list of possible ideas not with corresponding locations necessarily. They were Heritage/Transportation Museum, baseball/concert stadium, historic Prophetstown and State Park, Dog Park, Amphitheatre, Golf, Meritou Lodge

### Map Area 1

- Not area of focus
- Themes included – Heritage Pearls, Spiritual, and Trail Corridor

### Map Area 2

- Activities – A swimming beach by the pedestrian bridge on the West Lafayette side of the river, Heritage/Transport Museum (trains, Amelia Earhart display), hot air balloon rides,
- Commercial – Pedestrian Bridge would have street vendors and sell alcoholic beverages on Sundays. Small restaurants and café by river, Dock with canoe, paddle boat, sail boat, sea planes, high-aspect ratio pedal pontoon rentals
- Spiritual theme also included

### Map Area 3

- Not area of focus
- Themes included – Heritage Pearls and Trail Corridor

### Map Area 4

- Not area of focus
- Themes included – Heritage Pearls, Activities, and Trail Corridor

### Map Area 5

- Not area of focus
- Themes included – Heritage Pearls, Activities, and Trail Corridor

### Map Area 6

- Not area of focus
- Themes included – Heritage Pearls, Activities, and Trail Corridor



## 6.11 Participant Storyboard No. 10

Vision Statement: The Wabash: A Sewer No Mo'!



### Key Values

- Community Identity
- Recreation
- History
- Aesthetics
- Natural Systems

### Themes

- Links to People
- Preservation
- Recreation
- History
- Low-Impact Trails
- Urban Core Development

### Ideas

- Links to People is an overriding theme district on this story board
- A set of low-impact trails on both sides of the river paved and active: access from all parts of the community run along the entire corridor

### **Map Area 1**

- Preservation District – low-impact trails on both sides of river and protected natural areas

### **Map Area 2**

- Urban Core Development District
- On pedestrian bridge – Food carts and temporary kiosks for festivals
- Dining establishments with river views
- Trail considerations need to be made for area through core (i.e. bridges over ditches)
- On West Lafayette north of pedestrian bridge locate a major public gathering area – restaurants, amphitheatre, convention centre, elevated boardwalk,
- Parking with structural development a way to be publicly/privately associated with train depot overlook. Also link up to trail system.

### **Map Area 3**

- Preservation/Recreation District – low-impact trails on both sides of river and protected natural areas

### **Map Area 4**

- Preservation/Recreation District – low-impact trails on both sides of river and protected natural areas

### **Map Area 5**

- Preservation/Recreation/History District
- Low-impact trails on both sides of river and protected natural areas
- River overlook and parks, located right off of Highway 43 where it breaks away from river
- Picnic area on Lafayette side and link to Heritage Trail
- Improved access to river at Davis Ferry Park
- Bicycle trail to Prophetstown

### **Map Area 6**

- Preservation/Recreation/History District - low-impact trails on both sides of river and protected natural areas



## 6.12 Participant Storyboard No. 11

Vision Statement: Wabash River: Linking Past with the Future



### Key Values

- Recreation
- Beauty
- Environment
- Culture/Education
- Wildlife

### Themes

- Natural Beauty
- Economic Development
- Highlight Downtown
- Access/Recreation
- Ecological Sustainability

### Ideas

- Overriding Natural Beauty theme district except in downtown area

### Map Area 1

- Wildlife/Wetland/Flood Management District – build wetland area with potential for flood storage and wildlife nesting/resting areas located west of Highway 231 on West Lafayette side
- Open Water/Flood Management/Recreation District- an area of open water with residential water view properties located east of Highway 231 on West Lafayette side
- Public access points and recreation

### Map Area 2

- Highlight Downtown/Economic Development District
- Restaurants that offer views of the river, canoe outfitters next to river near the train station (offer more canoe tours), River Walk that offers history/education with interpreters, snack vendors on the pedestrian bridge, more activity downtown, Art in the Park permanent in city, landscaped park area, have river be the center of activity, take example from Europe with river lowered with built up sides with economic development activities
- Public access points and recreation

### Map Area 3

- Natural Beauty District – more trees and natural habitats, elevated wooden pathways, observation decks, move businesses away from river replace with natural vegetation, wildlife plantings, and trees
- Public access points and recreation

### Map Area 4

- Ecological Sustainability District
- Concentrate on access and recreation – set speed limits for boats have wake zones, river should be for canoeists, kayakers, fishermen, keep peace and beauty
- County Park

### Map Area 5

- Ecological Sustainability District
- Concentrate on access and recreation – set speed limits for boats have wake zones, river should be for canoeists, kayakers, fishermen, keep peace and beauty
- Picnic areas
- Public access at junction of Wildcat Creek and Wabash River

### Map Area 6

- Ecological Sustainability District
- Concentrate on access and recreation – set speed limits for boats have wake zones, river should be for canoeists, kayakers, fishermen, keep peace and beauty
- At junction of Tippecanoe and Wabash have access point with picnic area, place for fishermen, canoe and kayak rental locations with shuttles available possibly to Davis Ferry

## 7. Identifying Locations for Values and Goals



For this activity participants were given the chance to place stickers on an 18-foot map depicting the Wabash River Corridor between I-65 and US-231. Each sticker represented one of the eight Wabash River Enhancement Corporation core values from the first activity (see Section 3.1. for more details). Participants had the option of using eight different stickers, or any combination of stickers. The purpose of this activity was to understand the focus of enhancement activities related to the goals established by the WREC.

The paper map was scanned into digital format and the stickers were digitized in ArcMap as points on an aerial photograph. These tasks enabled a density analysis to be completed to visualize where participants concentrated activities associated with each goal. The resulting density maps are included below.

In total there were 410 stickers placed on the map; it was difficult to monitor exactly how many stickers each person was taking or if some people left the forum without participating in the activity. Table x shows environmental management and recreation made up almost 50% of the overall stickers placed on the map.

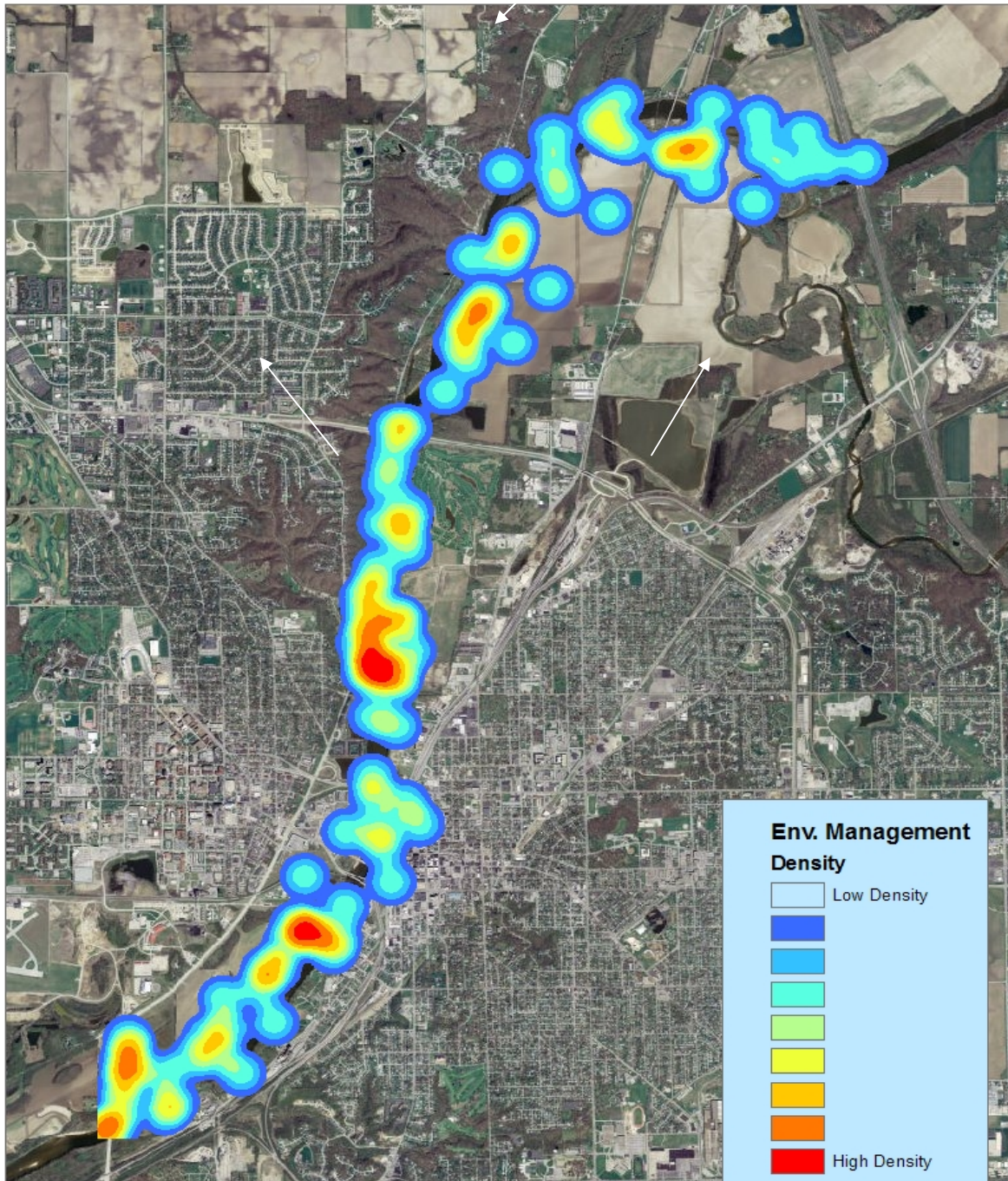
Figure 4: Summary of Goal Prioritization

Enhancement Goal	Number of Stickers Placed for Goal	Percentage of Total Stickers Placed
Environmental Management	101	24.6%
Recreation	81	19.8%
Educational Opportunities	43	10.5%
Economic Development	42	10.2%
Quality of Development	41	10.0%
Social and Cultural	38	9.3%
Public Access	35	8.5%
Health and Quality of Life	29	7.1%
<b>Total</b>	<b>410</b>	<b>100%</b>

There are general patterns with regard to densities for each goal. The goals of economic development, quality of development, and social and cultural have high densities located in the downtown area around State Road 26 and the Pedestrian Bridge. There are areas along the rest of the corridor where stickers were placed for these goals, however the majority were downtown. The goals of environmental management, educational opportunities, health and quality of life, public access, and recreation had multiple high density locations along the corridor.

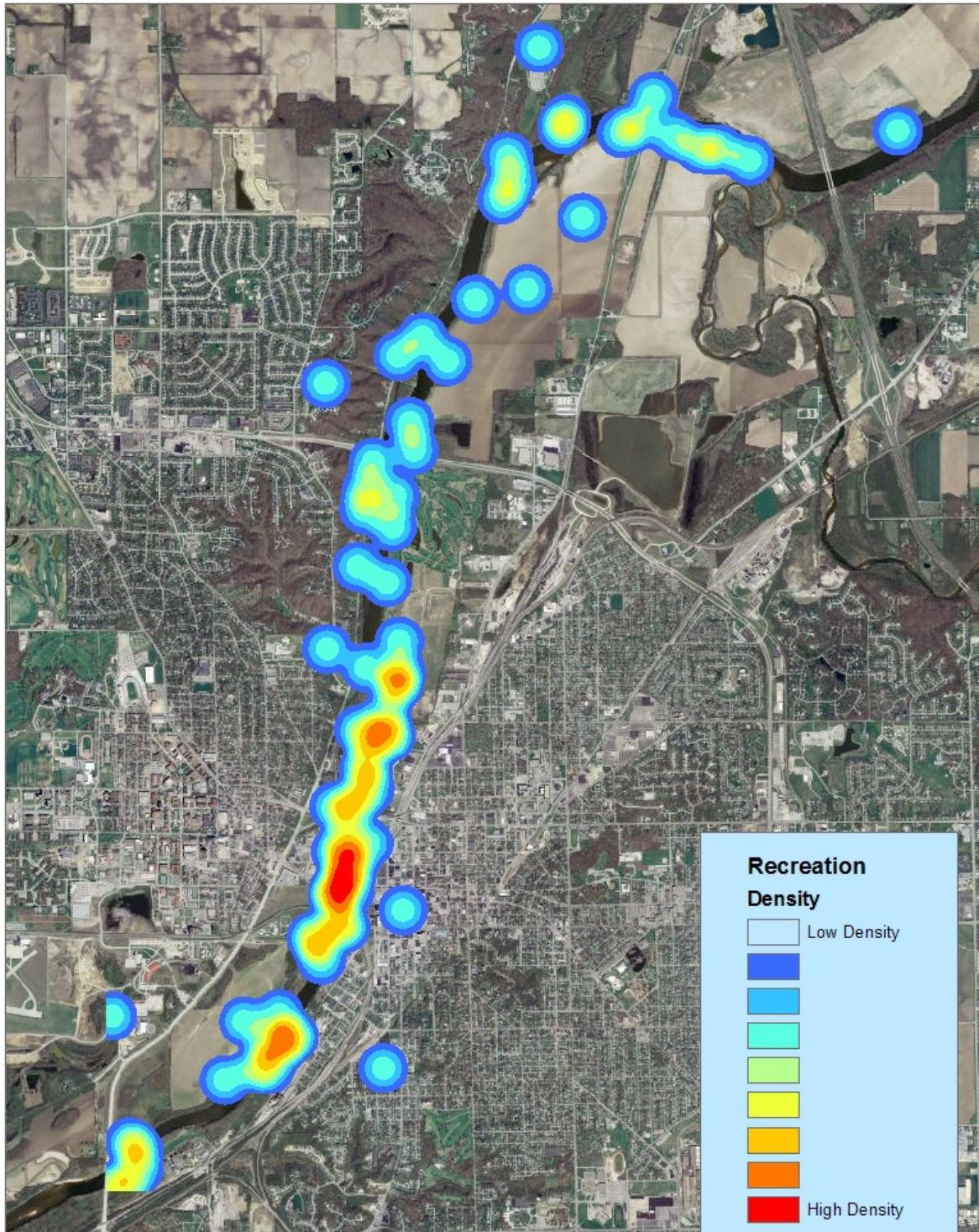


## Environmental Management Density



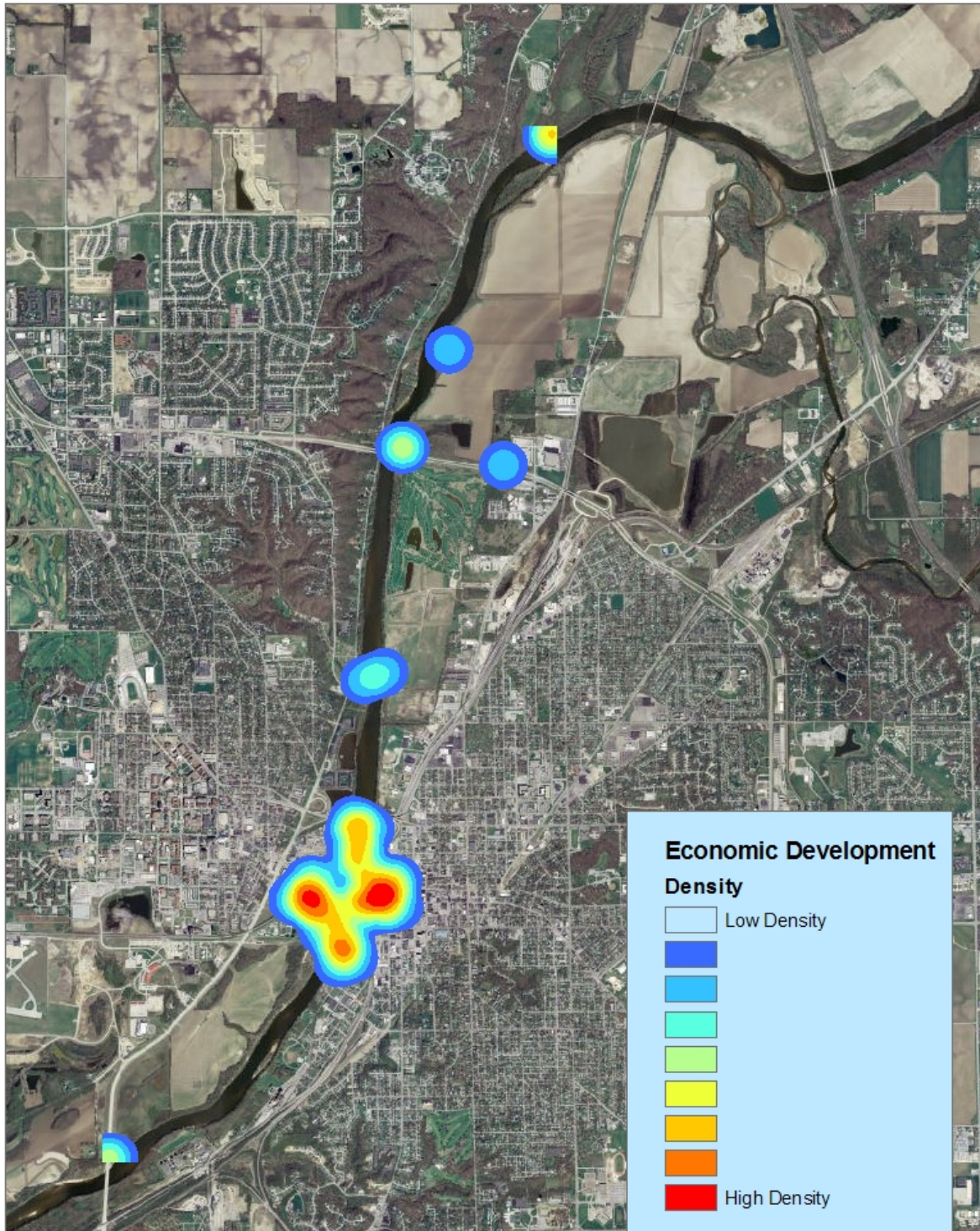


## Recreation Density



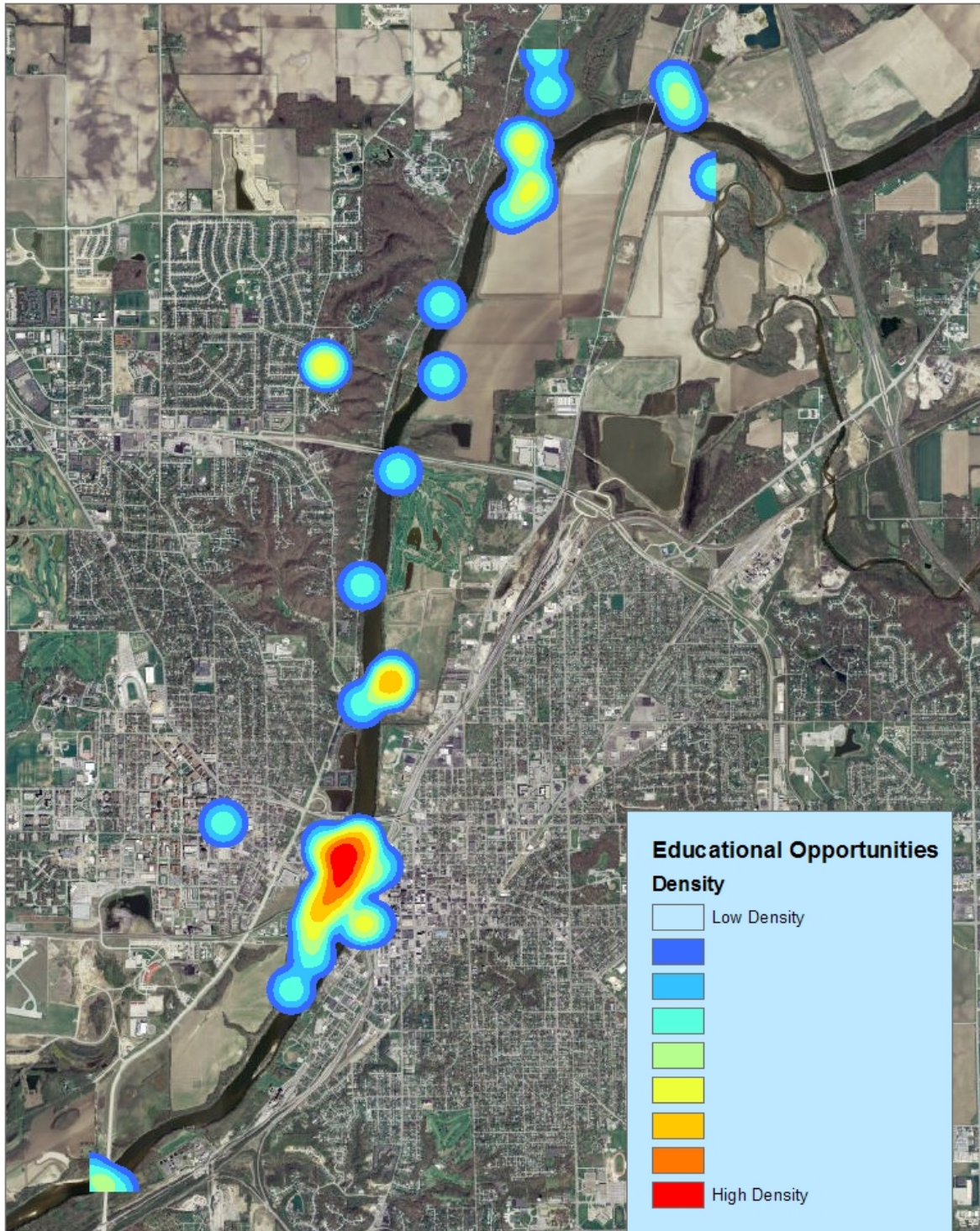


## Economic Development Density



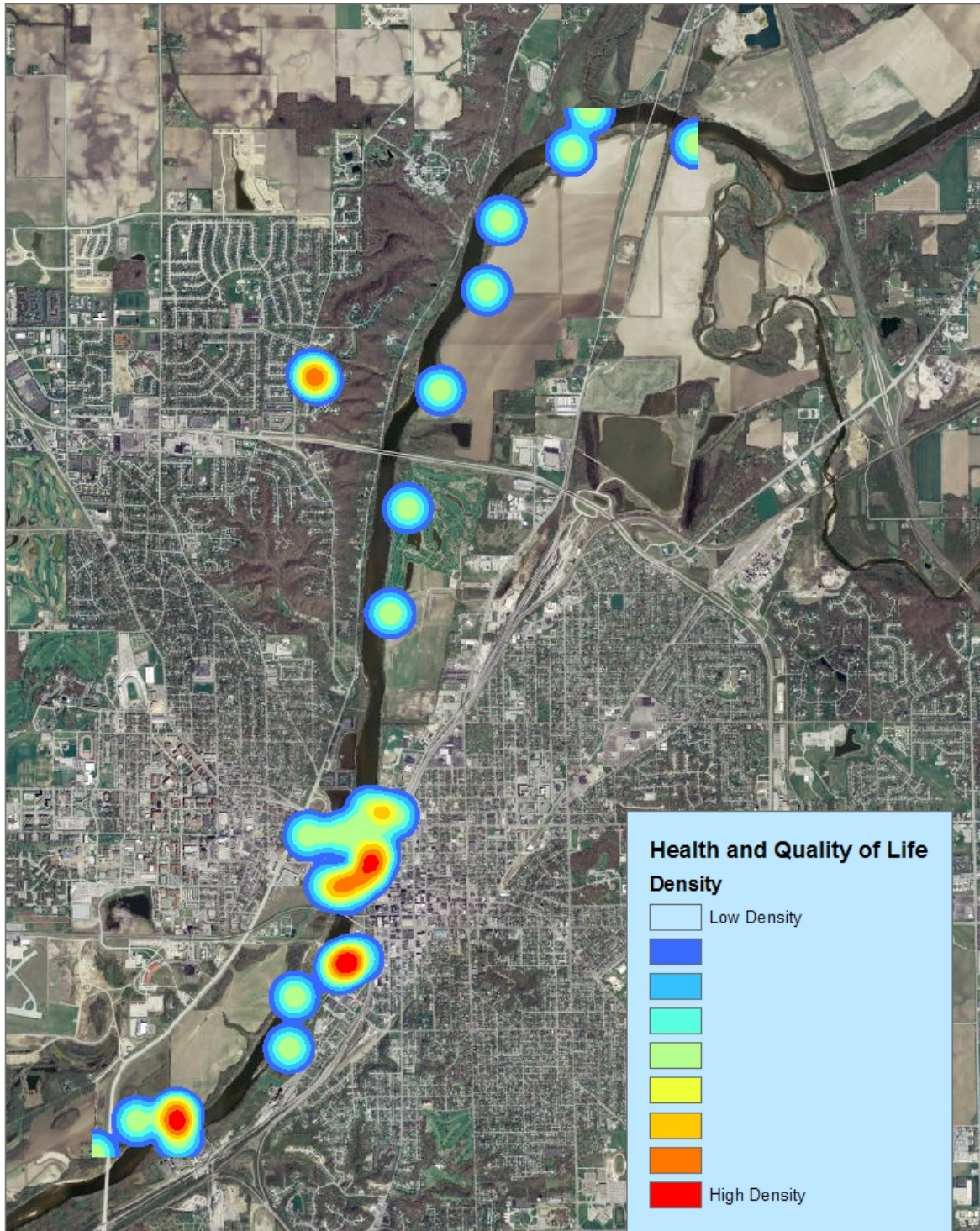


## Educational Opportunities Density



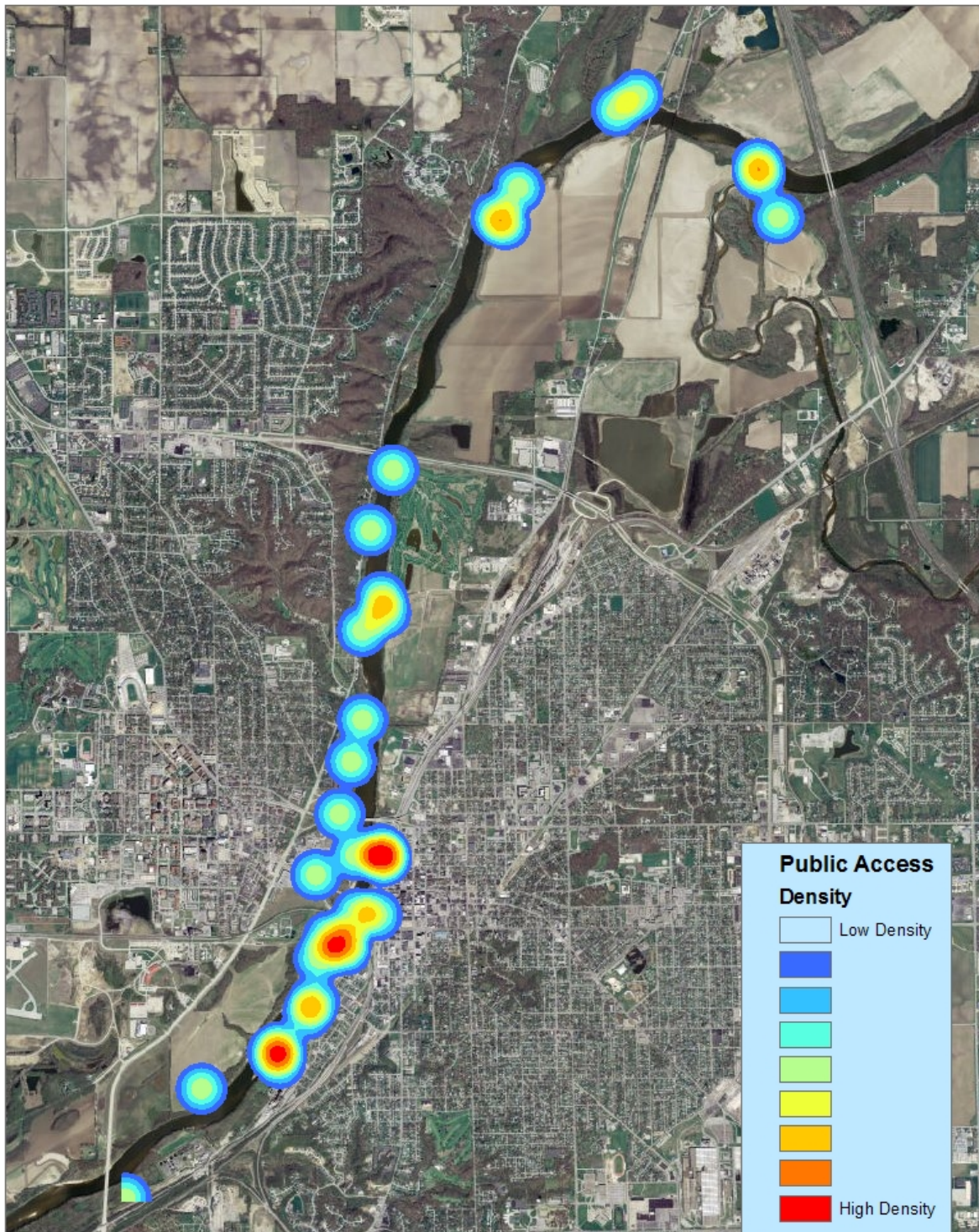


## Health and Quality of Life Density



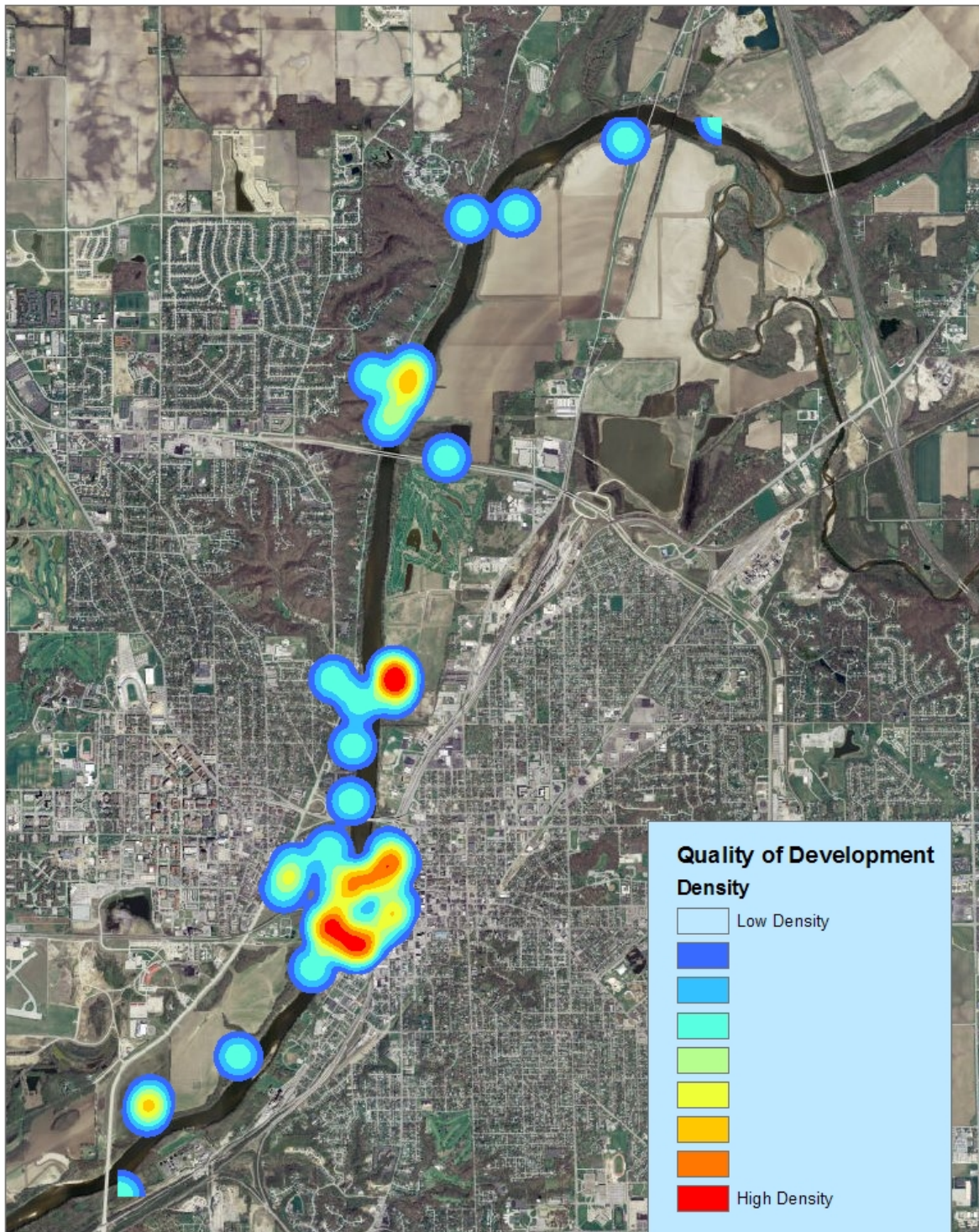


## Public Access Density



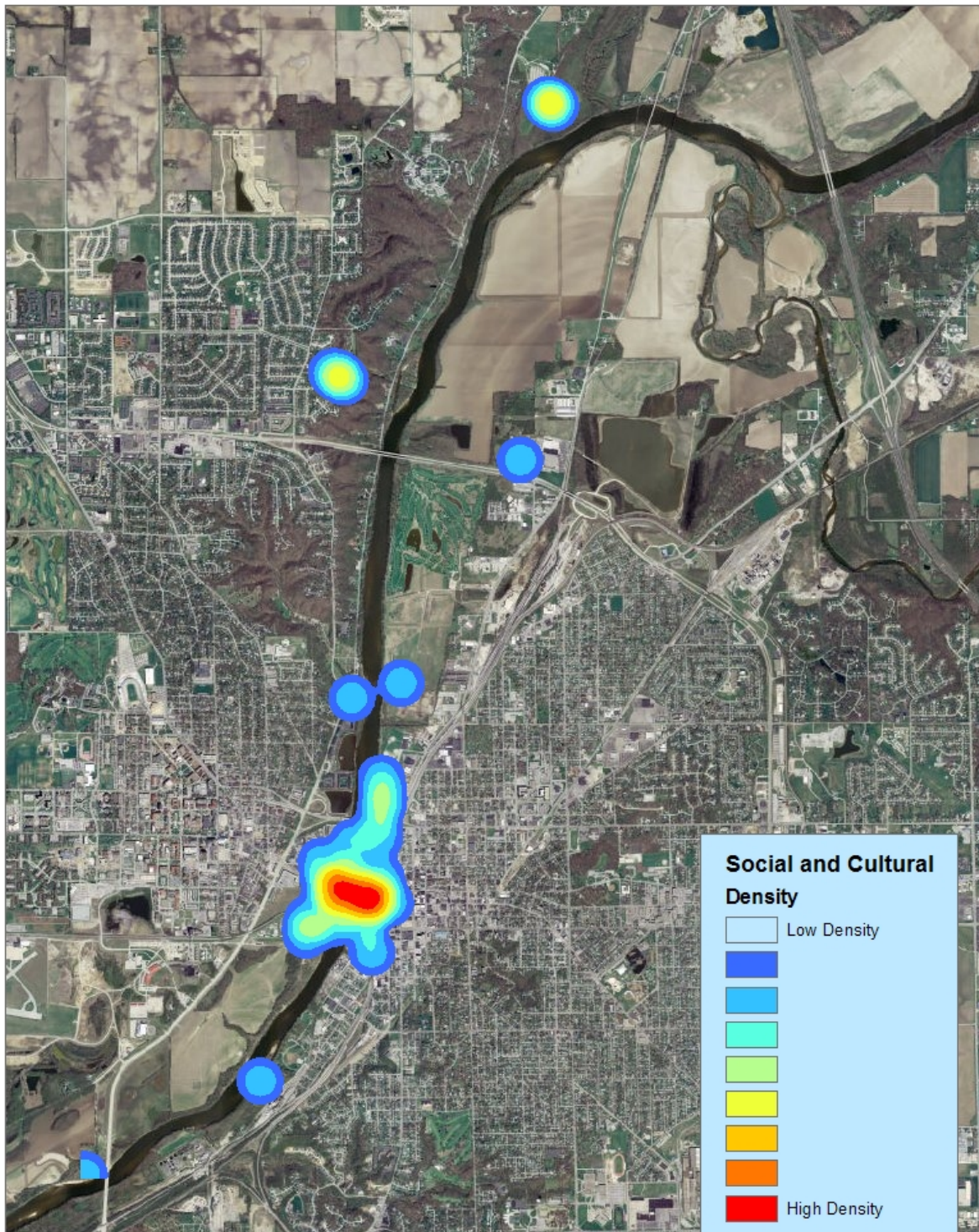


## Quality of Development Density





## Social and Cultural Density



## 9. Youth Program

One side of the Shively Center was set up for the children who attended River Vision with their parents. The children's ages ranged from infant and toddler up to young teenagers. This was more than just daycare for the children—an entire youth program at the event was planned and facilitated by The Imagination Station hands-on family science center. Working in conjunction with teaching staff at The Imagination Station, a few of the event organizers designed a program that ran independently from the adult program. During this time, the youth were able to convey their visions for Wabash River development in the form of maps and drawings.

The youth activities began with a brainstorming discussion of what rivers are, and the roles that rivers play in the ecosystem. Interesting discussion developed as the kids of various ages discussed what they each thought defined a river. The output of their brainstorm was the following:

### What is a river?

- water
- narrow
- smaller
- fresh water
- long
- thin
- shallow
- catfish
- survive easily
- trees around them
- fast-moving
- fish
- snakes
- dragonflies
- frogs

This was followed by some clips from a few movies that feature rivers in order for the kids to be able to see varied river settings. After the youth had an opportunity to see these film clips another brainstorming discussion was undertaken to discuss the ideas and dreams that the group had for the Wabash River area between the downtowns of Lafayette and West Lafayette. These dreams and ideas represented a diverse mix of recreation and ecological responsibility with some very creative ideas.

### Dreams / Ideas

- monkey
- water slide
- trees
- nice houses
- beach

## RIVER VISION

The Wabash. Our River, Our Community

---

- palm trees
- river (beach) house
- trampoline
- swimming
- bungee jumping
- roller coaster
- giant water bed over water
- bears
- fish
- elephants
- zoo
- free-range chicken farm
- new species of river dolphin
- solar-powered motor boats
- kayak
- paddle boats

Following the brainstorming of ideas, the youth were asked to capture their favorite ideas in a drawing. They were each given a simple pre-printed map of the area showing major roadways and the floodplain. They were given several magazines and drawing supplies which could be used to express their ideas on paper. These drawings are shown in Appendix 3. Once they completed their drawing the youth were asked to share their ideas with the group and present their drawings.

When they had completed their small drawing, the group was asked to work together to create a three-dimensional representation of their ideas on a 10-foot long floor-map (Appendix 3). Supplies such as popsicle sticks, pipe cleaners, cereal boxes, and plastic bottles were available along with glue and markers in order to map out their collective ideas on the blank canvas. After some initial discussion of what should be included and who would make what, the youth spent about two hours diligently working on their creation. Most of the ideas from the previous drawings were captured: recreation, natural habitat and “green space,” along with road removal. Across the children’s maps the strongest theme was ecological integrity that would return the riverfront to natural habitat where animals could live. The large map contains some interesting emergent ideas from discussions within the group and the types of available supplies. An underwater bubble for observing the river from below, and a covered river-walkway allowing the river to be enjoyed even in the rain were two of the emergent ideas.

## 10. Conclusions

It is clear that the public in the Lafayette/West Lafayette area has an interest in the Wabash River corridor. The substantial participant turnout shows that the public has a strong interest in improving the area for a variety of purposes and that River Vision was a good venue in which to discuss potential changes. Most of the participants noted that they felt free to discuss their ideas and agreed that their suggestions were taken seriously and incorporated into the overall plan (see participant evaluation in Appendix 4).

Although a variety of ideas were presented in each of the River Vision groups, a few main themes seemed to come through. Approximately 50% of the key values were associated with improving the natural systems, ecology, and recreational opportunities along the Wabash River. Recognizing the need to preserve the area's heritage and explore educational opportunities along the corridor was also important to participants. Increasing community interconnectivity was also important, and was reflected in maps showing the entire river corridor. In addition, many participants were in favor of increasing economic development opportunities along the river in downtown Lafayette and West Lafayette, especially in the urban core.

It is important to note that River Vision was just the first step in a process of planning and making improvements to the Wabash River corridor. The results and suggestions listed in this report should serve as a core basis for future work; however, additional stakeholders need to be consulted and more of an effort to reach consensus should be undertaken before acting on any of the ideas suggested during River Vision.

## 10. Appendices

### Appendix 1: Compilation of all Non-Prioritized Ideas (First Breakout Session)

Educational facility	Focal Point-Activities
Access for recreation	Museum-Heritage
Enhancement of recreational activities	Amphitheater
Reforest the flood plain	Clean Up- More Activity
Facilities improvement for attracting people	Trail System
Quality of construction	Event Coordinator
Access to river	Enhancements
More pedestrian bridges	Transportation To/From River
Natural vegetation	Social Events
Reconstruct wetlands	National Park Areas- Corridors
Improve water quality	Camping
Work w/counties to improve H2O quality	Canoeing
Reduction combined sewer overflow	Personal Clean Up
Reduce erosion	Recreation
Bank Stabilization	Water Trail-Supplies
Riparian zone improvement	Connecting Churches
Canoe Rental	Civic facilities-museum (transportation.)
Recognized as Water Trail	Docks and overlooks, include benches and piers
Access (Canoes)	Close enough to hear to river
Maps(Online)	Boating
Informational Signs	Water Quality (improve)
Tree Variety (Native)	Place that captures history-old town
Mandated Buffers	Beach-play in the sand
Environmental Reg. (Dumping)	Development that engages the river like rest
Picnic Tables (Social Areas)	Environmental education
Eliminate Storm Drains	Professional sports
Infrastructure (park more human friendly)	Tourism
Concerts, Fairs (Entertainment)	Develop interactive art-sculpture
Science of Rivers (Science Standards)	Build on the state park system
Accessible Information.	Hosting finals/tournaments
Fish you can eat	Consistent, Navigable Depth
Educate Pub. that they can use it	More places to launch boats
Dining Establishments (Urban)	Erosion Control
Increase Cleanliness Upstream	Clean-up days
Advertise (Recreation)	More Green Spaces on both sides of river
Eliminate Sediments	Handicapped Accessible
Tributaries Cleaned, Watershed Approach	Trail way
Eliminate Combined Sewers	Park Space
More parks that are safe for pedestrian access	Well Landscaped Pathways to River
Concert Venue (Slater Hill)	(Lighted)(Consider effects on wildlife)
Mixed use development (Savannah, GA)	Boat Parking(in River)Vehicle Parking
take advantage of the river location	Connect trail more than at 26-loop for Lafayette/West Lafayette
Linkage (Lafayette West Lafayette focused on Recreation.)	Better commercial use- allow more appreciation of river
Civic facilities-museum (transportation.)	Find a way to use floodplain

## Appendix 1 Continued

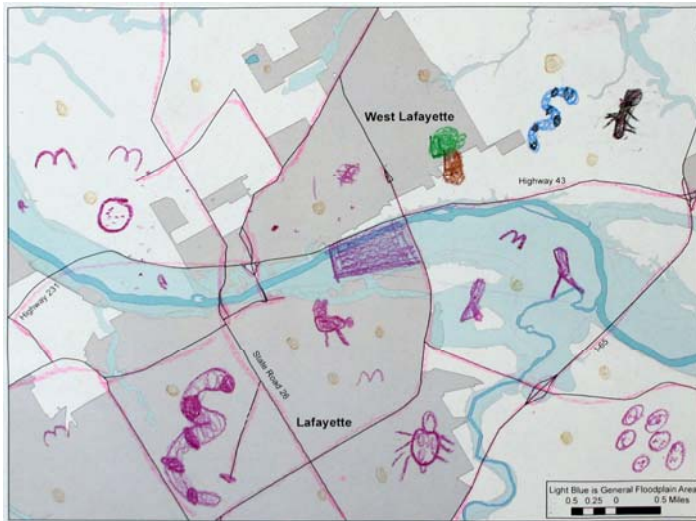
Docks and overlooks, include benches and piers	More opportunities for Human-powered boating
Close enough to hear to river	Better Park Development- Down to Water
Erosion Control	Canoe tours/boat rentals
Set-back Buffers (wildlife areas; "natural", non-motorized)	Public gathering points (amphitheater and gathering area)
Access	Benches
Downtown River Bank Development	Speed limit on river and enforcement
Trails	Improve downtown Lafayette
Public Access	Restaurants in natural settings
Educational Pavilion near Westside Park	Access
Floating Restaurant	Odor from bridge and kayaking
More extensive trail system	No channelizing
History Museums exhibits (astronauts, railroads, etc.)	Plant more trees in parks and golf course and along banks
Restaurants - clear view of Wabash (elevated)	Museums( art in the park)
Preservation of peace and quiet	Eco-tourism
Cultural Museums (art, etc.)	Regular maintenance
Public Performance Venue	Attractive expensive river-walk
Transportation to natural areas/trails/parks	Access to everyone
Boat tours	More community cleanup events
Minimizing CSO's	More access
Address Non-point source pollution	River Buffer (100 feet at least)
Multiuse trails	Facilities at access points
Trail improvements	24 hour access
Camping (make it more available)	Education on appropriate recreation usage
Water access for pets	Education stations along hiking trails
Rehab access points (boat ramps)	Readily available WQ information
Connect trail system	Buffer remain natural where possible
Riparian corridor improvements	Technology to improve quality of run-off
Commercial development on the waterfront (example, restaurants, shopping)	Labeled signs with education information along the river
Flood control/Flood plain/zoning University zoning	Education: have college students educate younger students
Boat tours (river tours) Accessible for the elderly and handicaps	Unnatural sediment with concern for wildlife (wading birds)
Boat rentals	Clean up of point source discharge
Wildlife habitat protection	Purchase for protective easements
Improve river access for the elderly	Tours
Dredging to allow better navigation	



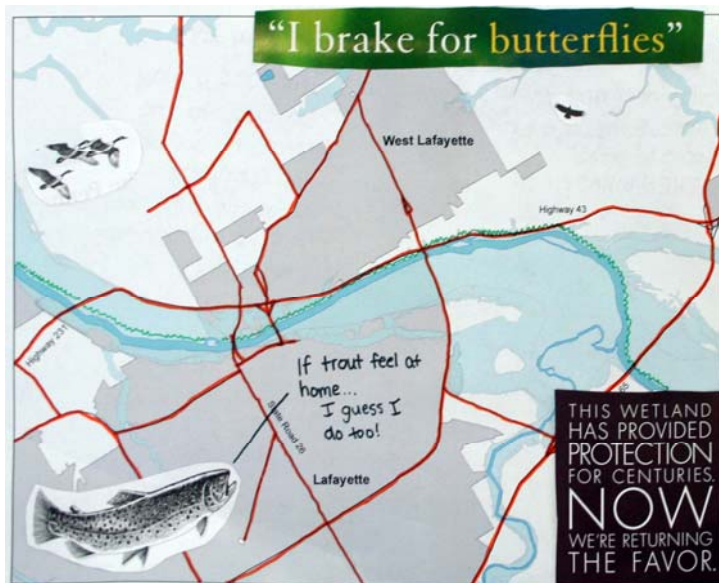
## Appendix 2: Ideas from Sketches Not Incorporated on Final Storyboards

Idea	Number of times mentioned
Canoe Rental	12
Riparian improvement (specifically more trees)	8
Walking trails(one from Lafayette to Delphi) / Bike trails	7
100-180 ft. buffers along whole corridor	7
Parking lots and boat ramps, more and landscaped nicely	6
Erosion control / Bank stabilization	5
Boat tours, dinner and/or historical	5
Remove obstructions to navigation (metal, trees, and sandbars)	4
Handicap Access to all areas and paths down to river	3
Remove farm lands to restore natural buffer areas	3
Small boat access	2
Camp sites	2
Expand fishing opportunities	2
Educational pavilion	2
Remove rip rap	2
Make river corridor visually appealing	1
Outdoor concrete structures	1
Baseball stadium	1
Restrooms	1
Places for food vendors and picnic tables	1
Benches to view river	1
Water fountain	1
More park areas	1
Educational signs, ie fishes of the Wabash	1
Garbage cans	1
Observation areas for Purdue crew races	1
Develop wetlands along river	1
Add rocks to the shoreline	1
Pavillion for picknicking near I-65	1
Environmentally safe fertilizers for golf course	1
Cultural Center	1
Public areas more inviting	1
Remove golf course and restore as natural area	1
Build riverside café/coffee shop	1
Bird watching platform	1
Dredge river throughout corridor	1
Create a small lake for scuba training and wildlife	1
Advertise sand bars in river as "West Lafayette Beach"	1
Limit residential development	1

### Appendix 3: Maps and Drawings from Youth Activities



This drawing shows varied wildlife being present around the river and the removal of many of the roads.

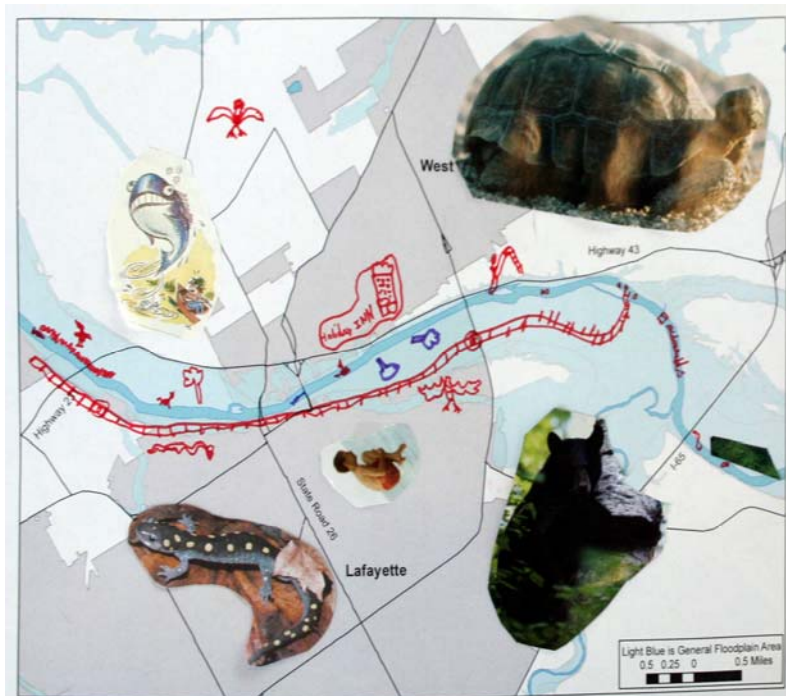


Here the participant expressed a desire to see many of the roads go away in order to remove the disruption of the ecosystem. On the back of the participants drawing were the following two notes:

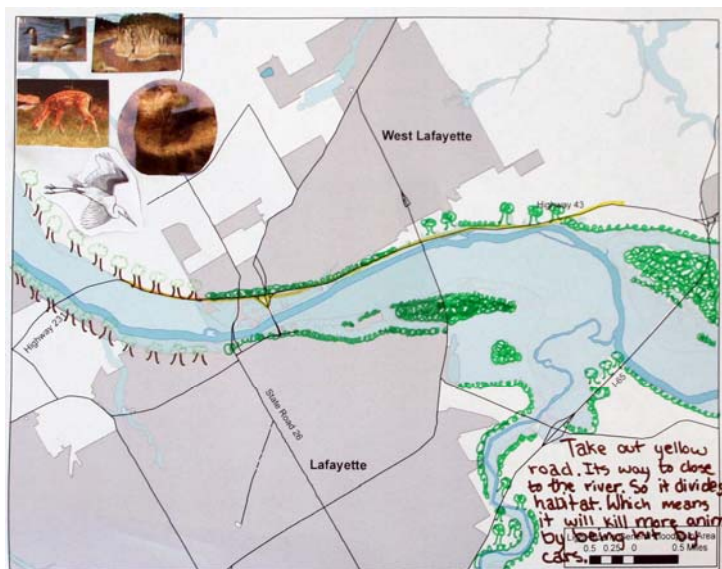
1. "I brake for butterflies" – People need to appreciate the river and animals more. Someday, the river won't be here... THEN WHAT?
2. Highway 231 – The road is way to close to the river...its just like the celery bog in Lafayette. Why would you interrupt an ecosystem like that?

## RIVER VISION

The Wabash. Our River, Our Community



This participant again showed the desire for animal habitat areas. Also included were themes of recreation expressed in the picture of a child jumping, a roller coaster along the river and a water slide into the river.



This image recommends the removal of Highway 43 in the areas where it is particularly close to the riverfront and restoring much of the riverfront to natural vegetation and much of the floodplain to natural areas.



This participant again suggests that most roads that come close to the river should be removed and indicates that the riparian zone should be filled with vegetation.

#### Three Dimensional Group Map



Youth beginning work on the three-dimensional group map.



# RIVER VISION

The Wabash. Our River, Our Community

---



Finished product of the three-dimensional group map.

## Appendix 4: River Vision Participant Evaluation Results

### ***How well were your values and opinions about the Wabash incorporated into the small group discussion?***

This question was measured on a 1-3 scale, where 1= “not at all”, 2= “somewhat”, and 3= “very well”. There was a fourth option “don’t know” which was coded as missing data. Of the 63 people that responded to this question, no one chose 1. Sixty-one people answered “very well”, showing that most people felt that their opinions were incorporated “very well” into the discussion.

### ***How well were your values and opinions about the Wabash incorporated into the large group discussion?***

This question was measured on a 1-3 scale, where 1= “not at all”, 2= “somewhat”, and 3= “very well”. There was a fourth option “don’t know” which was coded as missing data. Fifty-three people answered “very well”, six answered “somewhat”, and there were four missing data points.

### ***Do you feel you were able to honestly express your values and opinions?***

This yes/no question was answered “yes” by all 63 respondents.

### ***Was there a specific view that was expressed more than others?***

Thirty-eight people answered “yes” to this question, while 22 answered “no”. There were three missing data points. The follow-up question “If yes, what was it?” yielded the following responses:

- Preservation and responsible environmental management
- Restoring, preserving, and appreciation of our natural history
- Restoration, preservation, and appreciation of natural history
- Environmental
- Environmental enhancement
- A great more appreciation of the river was expressed in different ways by our entire committee
- Environment and water quality and protection
- Education/ museum
- Promoting community ownership of the river
- Environmental management and education
- Restoration of natural habitats
- Restoration, preservation
- Erosion
- Environment
- Our small group was focused on green or eco-friendly development
- Access and usability of the river
- Erosion control
- Access/erosion control/recreation

- Education, recreation, business development, environmental
- Drawing interest to the river
- Sustainable development, including giving a sense of responsibility back to the people
- Economic development
- Natural areas should be more economically sustainable and productive, and public areas should be more inviting
- Public access to the river
- Please do not make economics the major impetus: I'm not naïve! But the creative here is to less \$ motivated and leisure motivated! Recreation (culturally) is rather limited. Use the word "leisure" to be inclusive (of ages) and pursuits (not just activity!)
- Development concerns
- Erosion control and usage
- Environmental concerns
- Recreation and economic development
- Sustainable development
- Wabash as the backbone of the area, as structural element
- Recreation
- Water quality
- Social benefits of buffering, public access, and environmental

***How satisfied were you with the activities and processes today?***

This question was measured on a 1-3 scale, where 1= "not satisfied", 2= "somewhat satisfied", and 3= "very satisfied". Fifty-six people answered "very satisfied", and seven people responded "somewhat satisfied".

***How many total years have you lived in Indiana?***

The length of time that River Vision attendees have lived in Indiana varies greatly. The least amount of time was a year or less (N=3), and the most was 65 years (N=5). Five people did not answer the question.

***If you live in Tippecanoe County, how many total years have you lived here?***

The answers to this open-ended question range from zero (N=1) to 65 (N=1), with seven missing data points.

***What is your highest level of formal education?***

<b><i>Education Level</i></b>	<b><i>Frequency</i></b>	<b><i>Percent</i></b>
Some high school	1	1.6
High school grad/GED	3	4.8
Some college	7	11.1
2-year degree	3	4.8
4-year degree	16	25.4
Graduate Degree	26	41.3
Missing	7	11.1
<b><i>Total</i></b>	63	100.0

***How would you describe the area where you live?***

<b><i>Area</i></b>	<b><i>Frequency</i></b>	<b><i>Percent</i></b>
West Lafayette	23	35.5
Lafayette	11	17.5
Suburban Lafayette/W. Lafayette	10	15.9
Small Town	2	3.2
Rural Tippecanoe County	10	15.9
Missing	7	11.1
<b><i>Total</i></b>	63	100.0

***Which of the following describes the field of your current or most recent occupation?***

<b><i>Occupation</i></b>	<b><i>Frequency</i></b>	<b><i>Percent</i></b>
Agriculture	1	1.6
High Tech Industry	2	3.2
Industrial Manufacturing	2	3.2
Sales or Service	3	4.8
University or Higher Ed	11	17.5
Student	5	7.9
Health Care/Social Services	5	7.9
Homemaker	1	1.6
Retired	11	17.5
Unemployed/seeking employment	1	1.6
Other	19	30.2
Missing	8	12.7
<b><i>Total</i></b>	68	109.0*

\*Total percent is greater than 100 due to some individuals selecting more than one option



***How has your interest in the Wabash changed because of River Vision?***

- Broader views of community concerns
- Wildly increased and expanded
- I am even more interested and concerned!
- More interest in the vision
- Still interested
- Increased even more
- 360 degrees. Very energized
- Hasn't changed
- Importance of economic stability
- I am encouraged that the level of focus, enthusiasm, and knowledge is this high: all necessary to real progress
- It hasn't changed- I just realize even more how much other people are aware of the river's value to the community
- No, have been interested for a long time
- Increased
- More interest
- I feel like I can actually have a say in the future
- No
- Yes, more interested
- I have hope ☺
- Has not
- Many new ideas, we need to get started
- No, but even more enhanced
- I feel a lot more connected to the river and interested in helping the Wabash river plan develop
- Realize now the east/west community aspect
- I was always interested
- More interested in future development and improvements along the river
- Not sure it was, but it was nice to hear that we seem to be on the right track
- I need to spend more time there!
- Was not
- Not at all- I came here because I care and still do!
- More hope for future
- Interested in continuing participation
- I am now even more excited about being a part of the future of the Wabash than I was before
- Did not realize the boating danger
- Keener interest: usable with my students
- I'm glad I was invited and would like to be a proactive participant
- Glad there are a lot of others interested
- No, already interested
- Promoted commitment
- I was exposed to more specific ideas for river enhancements
- Become more aware of the many community leaders and everyday leaders who are interested in maintaining and preserving this river

- Increased
- All the possibilities
- I want to be an active part of it!
- No
- The program has gotten me excited about the future and has made me more knowledgeable about the community views
- No vision yet.

### Representativeness of Forum Participants

The US Census Bureau estimates that the Tippecanoe County population as of 2005 is 153,875 people. There were approximately 100 attendees at the forum, with 63 filling out evaluations.

#### ***Education***

About 41% of those who completed evaluations had graduate degrees, while Tippecanoe County statistics indicate that 15.1% of the county population holds such degrees. Additionally, one respondent had “some high school (1.6%); about 8% of Tippecanoe County fall into this category. Thus, River Vision participants had higher levels of education than the county as a whole.

#### ***Occupation***

Due to differences in the Census occupation categories and the River Vision evaluation occupation categories, it is difficult to compare the two. However, about 31% of Tippecanoe County residents are employed in the education, health, and social services fields, while about 21% of those responding to the evaluation questions worked in this field.

## Appendix 5: Instructions Provided to Each Participant

*Good Morning and Welcome to River Vision*

**BEFORE GOING TO YOUR ASSIGNED TABLE:**  
Please take a moment to complete the following exercise.

**Prioritizing Goals Activity:** Identify goals for the Wabash River corridor that are important to you.

---

**Goal:** The purpose of this activity is to understand what priorities participants have for the Wabash River corridor.

**Timeframe:** 5 minutes or less

**Materials:** sticky dots, categories listed on charts

**Directions:**

- a) At the registration table you were given (3) sticky dots.
- b) The eight goals, listed below, were developed in a previous exercise about the Wabash River. Which of these goals is a priority to you? Place your dots onto the charts to show which goals are most important to you. You may place all your dots on one goal or spread your dots out as you see fit, please do not overlap dots.

Environmental management  
Economic development  
Educational opportunities  
Recreation  
Public access  
Health/Quality of life  
Quality of Development  
Social and cultural

**Facilitator Role:** There are several facilitators near the flip charts to answer any questions you might have.

**Outcome:** We will report results from this exercise later this morning so that we all will have a better understanding of the different priorities that individuals have brought together today.

***Wabash River Vision Goals:***

The purpose of the River Vision community forum is to provide you with the opportunity to contribute ideas and input into the development of a vision for the Wabash River in Tippecanoe County. River Vision was developed through a partnership between local government, Living Laboratories on the Wabash (LLOW) at Purdue University and the Wabash River Enhancement Corporation. The Wabash River Enhancement Corporation was created to assist residents of Tippecanoe and surrounding counties in developing and realizing a new future for the Wabash River corridor.

Our efforts today are the beginning of a process to clearly define the future of the Wabash River corridor in Tippecanoe County. The ideas and dialogue generated today will inform future community planning sessions and the work of planning professionals being employed to help Tippecanoe County realize a new future for the river corridor.

As a participant in River Vision, you will be working closely with the other participants and facilitator at your table as a group.

***Your role as a River Vision participant is to:***

- contribute your ideas
- engage other members of your group in an informative dialogue
- support the efforts of your facilitator to assist with group activities
- ask questions when things are unclear
- remind facilitator to record minority opinions should a difference of opinion arise- this way no opinions will be excluded from future consideration

Each group will work with a facilitator that has been trained to support the efforts of your group. Please keep in mind that these individuals are volunteers, many of whom are students, that will be learning by working through the process today with your group.

***The role of your River Vision facilitator is to:***

- provide clarification of activities and questions
- record all ideas on the flipchart when necessary
- provide materials to groups
- ask for the assistance of our floating facilitator if a problem arises

*Please take a few minutes before the program begins to become acquainted with other individuals seated at your table and enjoy being part of a new future for the Wabash River Corridor. **The program will begin at 9:15.***

### *1<sup>st</sup> Breakout Session – Wabash River Values*

**Session Objective:** During this breakout session, participants are asked to define what they value about the Wabash River and Wabash River Corridor. These values will serve as a guide to the Wabash River Enhancement Corporation (WREC) and communities as they define goals and actions for the future.

**Step A:** What do you value about the Wabash River?

**Goal:** Record what it is that you value about the Wabash River and work with your group to identify a list of 3 – 5 key values that are important to the future of the Wabash River.

**Timeframe:** 20 minutes

**Materials:** index cards, markers/pens, push pins, foam core board

**Directions:**

- a) Come up with at least 3 answers to the question: What do you value about the Wabash River? Alternatively: What is most important to you about the Wabash River?
- b) Write your answers down on the index cards provided, only list one answer per card and write your response as large as possible.
- c) The facilitator will read each response and pin all cards onto the display board.
- d) For each response, determine if it belongs with or is similar to another response already on the board. Place these cards next to one another on the board.
- e) Condense the responses until all related cards are grouped on the display board. If there are responses that don't fit into any group, leave as a separate group.
- f) Assign a name that describes each value group - if possible combine related groups.
- g) Prioritize the value groups by deciding which of the groups represent the top 3 -5 key values for the future of the Wabash River corridor.
- h) If there is a difference of opinion, both views will be recorded on a flip chart so that the minority opinion of a group doesn't get lost.

**Facilitator's Role:**

- Provide materials
- Lead discussion of what values should be grouped together.
- Write category titles for the value groups on a different color of index card
- Lead discussion to prioritize the top 3-5 key values
- Record differences of opinions on the flipchart

**Outcome:** The list of key values decided upon by your group will be used to help prioritize ideas for the future of the Wabash River Corridor.

**Step B: How could the Wabash River corridor be better used and enjoyed?**

***Goal:*** Record your ideas for enhancing the Wabash River Corridor in Tippecanoe County. This should include ideas for areas north and south of Lafayette / West Lafayette and areas associated with the river in both cities; for the purposes of this forum we are primarily focused on the section of river between the I-65 bridge to the north and the US 231 bridge to the south.

***Timeframe:*** 15 minutes

***Materials:*** flipchart, markers

***Directions:***

- a) Come up with as many answers as possible for the question: How could the Wabash River corridor be better used and enjoyed? Consider ideas for all areas along the Wabash River corridor in Tippecanoe County.
- b) Each person in the group will get to express one idea at a time. We will go around the table taking turns until ideas are exhausted or time is up.
- c) If you don't have an idea on your turn you may pass to the next person.
- d) All ideas will be recorded on a flip chart.

***Facilitator's Role:***

- Record ideas on flip chart – write small on the flip chart and place completed pages on the table

**Outcome:** A list of all group members' ideas for enhancing the Wabash River Corridor.

**Step C: Consensus Building for Breakout Session #1**

***Goal:*** Summarize how your ideas relate to the key values by selecting 3 - 5 of your ideas that support each key value. This will not be a comprehensive list but a starting point to build upon later when defining themes that connect your ideas.

***Timeframe:*** 10 minutes

***Materials:*** flipchart, markers

***Directions:***

- a) Facilitator will list key values, 1 at a time, on the flip chart.
- b) Group members will discuss which ideas support the key value on the chart, some ideas may support more than one of the key values.
- c) Facilitator will record 3 ideas the group chooses for each value (This is not meant to be an exhaustive list.)

***Facilitator's Role:***

- Record summary of ideas that support key values
- Promote discussion of how ideas fit with values

***Outcome:*** The list of ideas generated during this discussion will be refined and utilized to develop a vision for the corridor later in the day.

## *2<sup>nd</sup> Breakout Session -- Ideas for the Future of the Wabash River Corridor*

---

*Session Objective:* Drawing from the previous discussion of ideas that support key values for the corridor and from the presentation of other projects from around the country, you will develop your ideas for the corridor by creating drawings that illustrate your ideas. The groups will then use these sketches to work toward the creation of a vision for entire corridor.

### **Step A: Who, What & Where**

---

*Goal:* Develop your ideas for the Wabash River corridor by creating a sketch on top of a picture or map of the corridor. Try to develop at least two of your ideas into a drawing and description that can be understood by others without a verbal explanation.

*Timeframe:* 20 minutes

*Materials:* maps, images, pens, tracing paper

*Directions:*

- a) Decide on an idea that you would like to explain further for the Wabash River corridor.
- b) **Develop your idea by including in your drawing: who will benefit from the idea, what are the changes that will be made, and where will it occur along the corridor.**
- c) Select a map or image that will best allow you to illustrate the idea.
- d) Draw right on the map or image or tape tracing paper over it.
- e) Write descriptions on your sketches, this will help others understand your ideas at future planning sessions.
- f) Drawings do not have to be to scale or artistic, just represent your ideas to the best of your ability by sketching and writing descriptions.
- g) REPEAT process above for at least one more idea; remember the group should try to develop ideas that cover the entire corridor from I-65 to US 231.
- h) Facilitator will hang up sketches on the foam core board.
- i) Ask the facilitator for help or work in pairs if you are having difficulty with this activity.
- j) Have each group member present their drawings to the rest of the group, use this time to ensure that the ideas are clearly communicated – either through drawing or description.

*Facilitator's Role:*

- Provide materials – pass out maps and images AFTER breakout session introduction is completed
- Ensure that group members are recording ideas for all areas of corridor, try to avoid having everyone focus on one area
- Use the last five minutes to allow group to present ideas to one another

**Outcome:** Drawings that illustrate group ideas for the entire corridor.

**Step B:** What common themes (similar ideas) do you see in the ideas proposed by your group?

---

**Goal:** Identify related ideas or themes that exist in the drawings of the corridor created by group members.

**Timeframe:** 25 minutes

**Materials:** Your idea drawings

**Directions:**

- a) Go around the table - each person will answer the question: What common themes (similar ideas) do you see in the ideas proposed by your group?
- b) The facilitator records each identified theme on the flip chart.
- c) Refine the list of identified themes by discussing as a group which themes are related.
- d) Facilitator marks related themes on the flip chart list.
- e) Identify a category name for each group of related themes.
- f) Facilitator records theme categories on flip chart.
- g) Go around the table and each person will vote for the top 3 theme categories that they feel represents the image drawings best.
- h) Facilitator marks the top 5 common themes on the flip chart.
- i) As a group, select 4-6 of your idea drawings that best represent the top 5 common themes.
- j) For each of the selected idea drawings, record the common theme(s) that it represents on the top of the drawing.
- k) If there is a difference of opinion, both views will be recorded on the flip chart so that the minority opinion of a group doesn't get lost.

**Facilitator's Role:**

- Record common themes
- Record incompatible ideas

**Outcome:** Identify 4 to 6 drawings and list the common themes that link the ideas together.

**Step C:** Summary of Group Findings

---

**Goal:** Group will present the ideas it has developed in Breakout Session #2 as well as the list of key values that were identified in Breakout #1 to the rest of the forum.

**Timeframe:** 5 minutes to prepare a short 2 – 3 minute presentation

**Materials:** Results from previous questions and exercises

**Directions:**

- a) Appoint a spokesperson in the group to present to the rest of the forum.
- b) Spokesperson will present:
  - 4 – 6 idea drawings
  - Common theme(s) that was identified for each drawing

**Facilitator's Role:**

- Assist in the selection of a group spokesperson (group member)
- Gather materials for presentation

**Outcome:** All participants will have the opportunity to see the work of other groups.



### *3<sup>rd</sup> Breakout Session – A Vision for the Future of the Wabash River Corridor*

---

**Session Objective:** Each group will use efforts from previous breakout sessions to decide where specific ideas should be implemented within the corridor. This will inform the development of a storyboard that clearly shows a vision for the future of the Wabash River corridor.

**Step A:** Idea placement, locating specific locations for ideas.

---

**Goal:** Using the idea drawings from Breakout Session #2, you will decide where these ideas are appropriate in the Wabash River Corridor.

**Timeframe:** 15 minutes

**Materials:** idea drawing, table-size map of corridor, pens / markers

**Directions:**

- a) Start with 1 of the idea drawings presented in your group summary and decide where it is most appropriate within the corridor.
- b) Tape the image on the edge of the map, leave room for 4 – 6 images without covering up the river corridor.
- c) Draw a symbol on the corner of the image drawing (triangle, circle, etc.) for identification.
- d) Discuss where the idea is appropriate within the corridor and draw the image's symbol on the map at that location; for larger features, such as trails, draw a line connecting symbols that represent their location within the corridor.
- e) Determine if there are any additional areas, other than the primary one already recorded, draw a smaller version of the symbol in the additional areas where this idea would work.
- f) Repeat for each of the 4 – 6 image drawings.

**Facilitators Role:**

- Provide materials
- Record differences of opinion on the flipchart

**Outcome:** Decisions about where different ideas are appropriate within the corridor, linking ideas to actual locations within the corridor.

**Step B:** Vision storyboard

---

**Goal:** The creation of a storyboard of themes and ideas that illustrates a clear vision for the future of the Wabash River Corridor. This storyboard should communicate the key values, common themes and ideas that your group has developed for the development of the Wabash River corridor.

**Timeframe:** 20 minutes

**Materials:** Idea drawing, table-size map of corridor, pens / markers

**Directions:**

- a) List the key values on the map.
- b) List the common themes on the map.
- c) As a group, discuss the question: What overall relationship connects the ideas you have placed on the map? Think about the key values and common themes that that your group has developed.
- d) Use the results of this discussion to draw a district on the map where each theme should be focused.

- e) Write a VISION STATEMENT on the top of your storyboard; this is a one sentence summary that expresses the theme districts and defines your group's vision for the corridor.
- f) Record any additional ideas or comments on the map that help support your vision for the corridor.

***Facilitators Role:***

- Provide materials
- Record differences of opinions on the flipchart

***Outcome:*** Each group will have created a clear vision for the corridor, these visions and the ideas that they incorporate will be used in future planning sessions to make decisions about the future of the Wabash River corridor. We encourage all participants to stay after closing remarks and visit with individuals from other groups about the different visions that have been developed.

This process documents the work that you have completed today and provides a basis for moving forward with your ideas to realize a new future for the Wabash River in Tippecanoe County.

*Thank you for your commitment to the Wabash River*  
**BEFORE YOU LEAVE TODAY:**  
Please take a moment to complete the following exercise.

---

**Enhancement Goals Activity:** Identifying location for enhancement activities associated with goals

***Goal:*** The purpose of this activity is to get an accurate understanding of where to focus enhancement activities related to the goals established by the Wabash River Enhancement Corporation that you used in the Prioritizing Goals Activity this morning.

Now that you have had a chance work with others and make decisions about the Wabash River corridor, where do enhancement activities associated with these goals belong in the Wabash River corridor?

***Timeframe:*** 5 minutes or less

***Materials:*** stickers with goals printed on them, large wall map of Wabash River corridor

***Directions:***

- You will be given 8 stickers; you may select one of each or use any combination of stickers that represent the goals.
- Place these stickers where you would like to see enhancement activities associated with the goal listed on the sticker anywhere on the large map hanging on the wall.
- There will be some areas where one of the goals may not be compatible with actual conditions, however, use your best judgment to determine where to place the sticker.
- Try to avoid directly overlapping sticker, be sure that stickers underneath can still be read.

***Facilitator Role:*** There are several facilitators near the map to answer any questions you might have.

***Outcome:*** The results of this map will be used in analysis for future planning efforts.