

Consumer information for users of water from the Village of Granville water system

Drinking water, including bottled water, may reasonably be expected to contain at least small amounts of some contaminants. The presence of contaminants does not necessarily indicate that the water poses a health risk. More information about contaminants and potential health effects can be obtained by calling the Environmental Protection Agency's Safe Drinking Water hotline at 1-800-426-4791.



Sources of Contamination

The sources of drinking water (both tap water and bottled water) include rivers, lakes, streams, ponds, reservoirs, springs, and wells. As water travels over the surface of the land or through the ground, it dissolves naturally-occurring minerals and, in some cases radioactive material, and can pick up substances resulting from the presence of animals or from human activity.

Contaminants that may be present in source water include: (1) microbial contaminants, such as viruses and bacteria, which may come from sewage treatment plants, septic systems, agricultural livestock operations, and wildlife; (2) inorganic contaminants, such as salts and metals, which can be naturally occurring or result from urban storm water run off, industrial or domestic wastewater discharges, oil and gas production, mining, or farming; (3) pesticides and herbicides, which may come from a variety of sources such as agriculture, urban storm water run off, and residential uses; (4) organic chemical contaminants, including synthetic and volatile organic chemicals, which are by products of industrial processes and petroleum production, and can also come from gas stations, urban storm water run off, and septic systems; and (5) radioactive contaminants, which can be naturally occurring or be the result of oil and gas production and mining activities.

In order to ensure that tap water is safe to drink, the EPA prescribes regulations which limit the amount of certain contaminants in water provided by public water systems. Food and Drug Administration regulations establish limits for contaminants in bottled water which must provide the same protection for public health.

How can I get involved?

If you are interested in participating in the decision making process, you may attend Village Council meetings at 141 East Broadway, on the 1st and 3rd Wednesdays of each month at 7:30pm. Public participation and input are always welcome.

For more information, comments, or questions regarding this report, your drinking water, plant processes or plant tours, please contact Water Plant Supervisor Larry Fruth at 740-587-0165.

For questions regarding your water/sewer bill, please contact Accounting Clerk Judy Glosinski at 740-587-1400.

2008 Water Plant Facts

- 33 miles of waterlines
- 382 fire hydrants
- 1659 number of service connections
- .700 mgd average daily water consumption
- 2 million gallons per day—maximum capacity



PRSRRT STD
US POSTAGE PAID
PERMIT #30
GRANVILLE, OH 43023

Village of Granville
141 East Broadway
PO Box 514
Granville, OH 43023

Village of

Granville

Ohio

2008 Water Quality Report



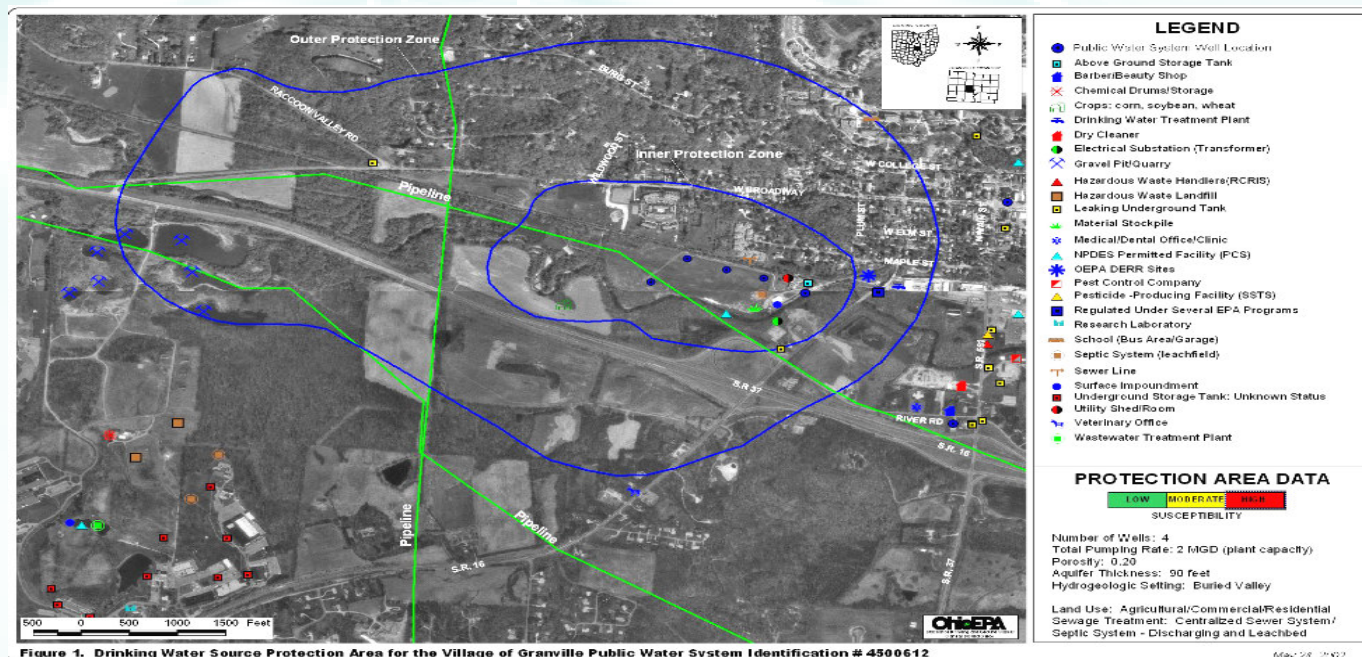
What's in your water?

2008 Water Quality Report

What is the source of my water?

The Village of Granville's water supply is designated as a ground water supply. Granville's water comes from a wellfield near Raccoon Creek adjacent to the water treatment plant, on a 20-acre site owned by the Village of Granville. Currently, the Village operates three wells. There is an Ohio EPA Superfund site near the Village's wellfield that the EPA has been monitoring for at least 15 years.

The aquifer that supplies drinking water to the Village has a high susceptibility to contamination due to the sensitivity of the aquifer, the number and types of potential contaminant sources, and historical detections of soil and ground water contamination. This sensitivity does not mean that the Granville wellfield will become contaminated, only that the likelihood of contamination is relatively high. Future contamination can be avoided by implementing protective measures. In case of an emergency, the Village of Granville has connections to the City of Newark's water mains at two locations. These emergency connections have never been used to supply Granville with water.



Do I need to take special precautions?

Some people may be more vulnerable to contaminants in drinking water than the general population. Immuno-compromised persons such as persons with cancer undergoing chemotherapy, persons who have undergone organ transplants, people with HIV/AIDS or other immune system disorders, some elderly, and infants can be particularly at risk from infections. These people should seek advice about drinking water from their health care providers. EPA/CDC guidelines on appropriate means to lessen the risk of infection by Cryptosporidium and other microbiological contaminants are available from the Safe Drinking Water Hotline at 1-800-426-4791

Quality Report

Contaminants (units)	MCL	MCLG	Level Found	Range of Detection	Violation	Sample Year	Typical Source of Contaminants
Inorganic Contaminants							
Fluoride (ppm)	4	4	1.03 AVG	0.78 - 1.53	NO	2008	water additive which promotes strong teeth
Copper (ppm)	1.3 (AL)	1.3	0.117	NA	NO	2007	corrosion of household plumbing
Note: Zero out of twenty samples was found to have copper levels in excess of the Action Level of 1.3 parts per million							
Lead (ppb)	15 (AL)	0	6.7	NA	NO	2007	corrosion of household plumbing
Note: Zero out of twenty samples was found to have lead levels in excess of the Action Level of 15 parts per billion							
Disinfection By-Products							
Total Trihalomethanes							
THM (ppb)	80	NA	0.8	NA	NO	2008	by-product of drinking water disinfection
Haloacetic Acids (five)							
HAA 5 (ppb)	60	NA	4.6	NA	NO	2008	by-product of drinking water disinfection
Residual Disinfectant MCDL MCDLG							
Average Total Chlorine Residual (ppm)							
	4	4	1.01	0.81 - 1.25	NO	2008	water additive used to control microbes

What does this chart mean?

- MCL**—Maximum Contaminant Level, or the highest level of a contaminant that is allowed in drinking water. MSLs are set as close to the MCLGs as feasible by using the best available treatment technology.
- MCLG**—Maximum Contaminant Level Goal, or the level of a contaminant in drinking water below which there is no known or expected risk to health. MCLGs allow for a margin of safety.
- MRDL**—Maximum Residual Disinfectant Level which is the average total chlorine residual from routine monthly bacteria sample sites.
- MRDLG**—Maximum Residual Disinfectant Level goal.
- AVG**—Yearly average of daily fluoride concentrations at entry point to distribution system.
- ppm**—parts per million or milligrams per liter are a measure of the concentration of a contaminant. A part per million corresponds to one second in a little over 11.5 days.
- ppb**—parts per billion or micrograms per liter are a measure of the concentration of a contaminant. A part per billion corresponds to one second in 31.7 years.
- NA**—not applicable and/or these compounds currently have no MCL and/or MCLG.
- AL**—Action Level, or the concentration of a contaminant which, when exceeded, triggers treatment or other requirements which a water system must follow.
- Total Trihalomethanes**—TTHM is the sum of the concentrations of chloroform, bromodichloromethane, dibromochloromethane and bromoform
- Haloacetic Acids (5)** - HAA 5 is the sum of the concentrations of mono, di and trichloroacetic acids and mono and dibromoacetic acids.

Is our water system meeting rules that govern our operations?

The Ohio Environmental Protection Agency requires the Village to test and report our water quality on a regular basis to ensure its safety. We have always met all of these requirements. The Consumer Confidence Report is an annual report required by EPA regulations and is designed to provide customers of community water systems information on their drinking water.

Violations

The Village of Granville public water system was in violation of Ohio Revised Code Section 6109.20 for failure to provide a treated water fluoride level of 0.8 mg/L to 1.3 mg/L on two occasions in 2008. The fluoride concentration on May 12, 2008 was 1.53 mg/L and on September 10, 2008 was 1.45 mg/L. Corrective action has been taken to try to maintain the fluoride residual in the optimum range at all times.

Delivering a continuous supply of safe, high-quality and good tasting water for the residents of Granville.