



the Skinny Pincushion



skinny pincushion
piece 1

cut 2 from fabric



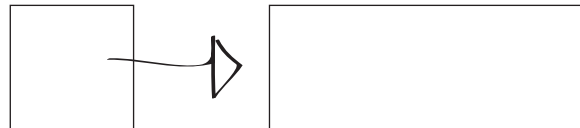
skinny pincushion
piece 2



cut 4 from
contrast fabric

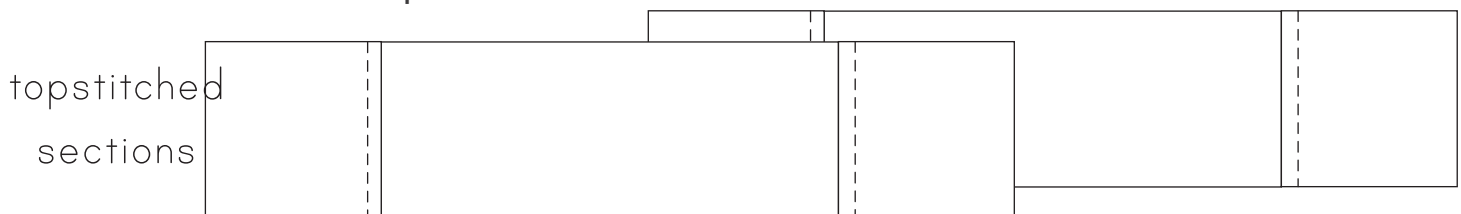
1/4 in. seam allowances included

1. Sew one of your piece 2 squares to the end of one of your piece 1 rectangles with right sides together.



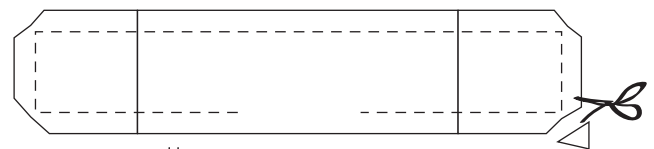
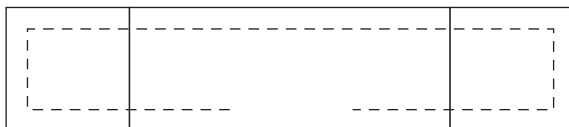
Press your seam allowance out towards the piece 2 square. Topstitch the seam by sewing only through piece 2 and the seam allowances about 1/8" from the

seam line. Repeat with the rest of your piece 2 squares and your piece 1 rectangle. You will now have two pieces that look like this.



2. Next, sew the two pieced sections together, aligning seams, with right sides together and using a 1/4" seam allowance and take care to leave a 2" gap in your stitching on one of the long sides of the rectangles. (This will allow you to turn the pincushion right side out)

stitch -leaving opening



clip seam allowance

3. Clip the seam allowances at the corners to reduce bulk and turn your pincushion right side out.
4. Stuff your pincushion with your desired material. I like to use a TON of poly stuffing - packed in till the pincushion is nice and firm.
5. Sew the opening closed using a hand sewing stitch of your choice.
6. You are finished! Enjoy your handy skinny pincushion!