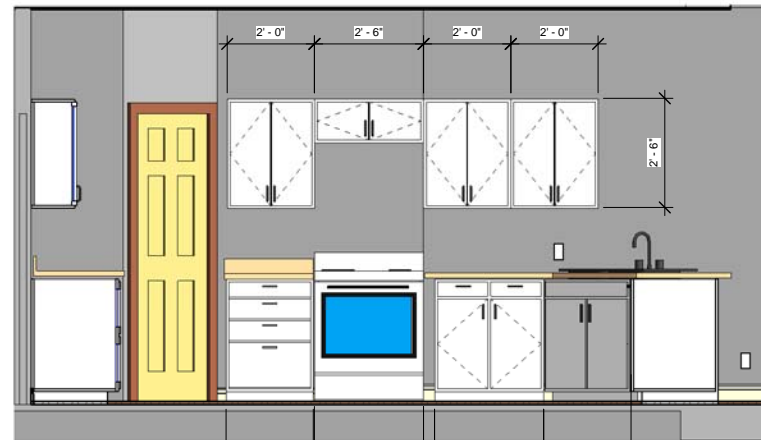


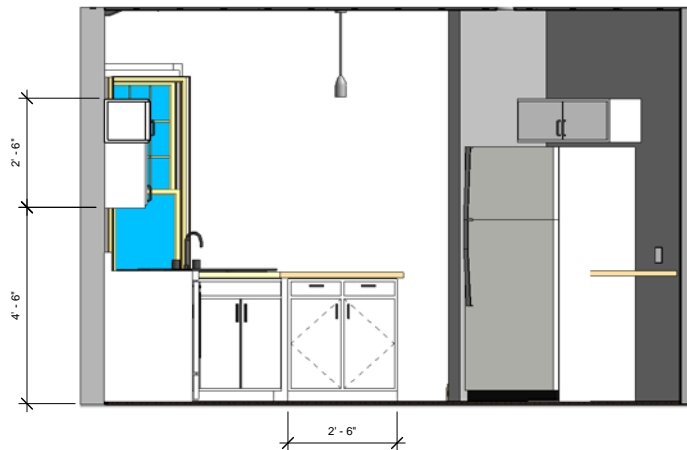
THESE DRAWINGS CAN NOT BE USED, COPIED, TRACED OR REPRODUCED, IN WHOLE OR PART OR MANNER WHAT SO EVER WITHOUT PERMISSION FROM BRIAN J. PILLING, AIA



② KITCHEN ELEVATION - A  
1/2" = 1'-0"



④ KITCHEN ELEVATION - C  
1/2" = 1'-0"



③ KITCHEN ELEVATION - B  
1/2" = 1'-0"



⑤ KITCHEN ELEVATION - D  
1/2" = 1'-0"



① INTERIOR PERSPECTIVE - GREAT ROOM

NOTE: GO TO INTELLIGENTHOUSEPLANS.COM TO REQUEST ADDITIONAL INTERIOR PERSPECTIVE VIEWS



BRIAN J. PILLING, AIA  
736 RIDGE POINT DRIVE  
COROLLA, NC 27927  
PHONE 252-202-7550  
obxarchitect@gmail.com  
www.intelligenthouseplans.com

LOCAL PROFESSIONAL'S SEAL

**THE ROCKPORT**  
INTERIOR ELEVATIONS

EVERY ATTEMPT HAS BEEN MADE IN THE PREPARATION OF THESE DRAWINGS TO AVOID MISTAKES. THE DESIGNER, OR ANYONE ASSOCIATED WITH THE DESIGNER, WILL NOT BE HELD LIABLE FOR ANY ERRORS OR OMISSIONS IN THESE DRAWINGS.

REVISIONS	
NO.	DATE/DESCRIPTION

DATE  
PLAN NUMBER

SHEET NUMBER  
**A-401**

BRIAN J. PILLING, ARCHITECT & INTELLIGENTHOUSEPLANS.COM DO NOT ASSUME RESPONSIBILITY FOR ANY HOME BUILT FROM THESE PLAN DOCUMENTS. IT IS THE RESPONSIBILITY OF THE PURCHASER TO CONFIRM & REVISE ALL PLANS AND DETAILS TO CONFORM TO ALL APPLICABLE LOCAL & STATE CODES, ORDINANCES, AND REGULATIONS. THE PURCHASER SHALL HIRE A LOCAL LICENSED PROFESSIONAL ENGINEER OR ARCHITECT TO ADAPT THESE PLANS TO LOCAL SITE CONDITIONS.