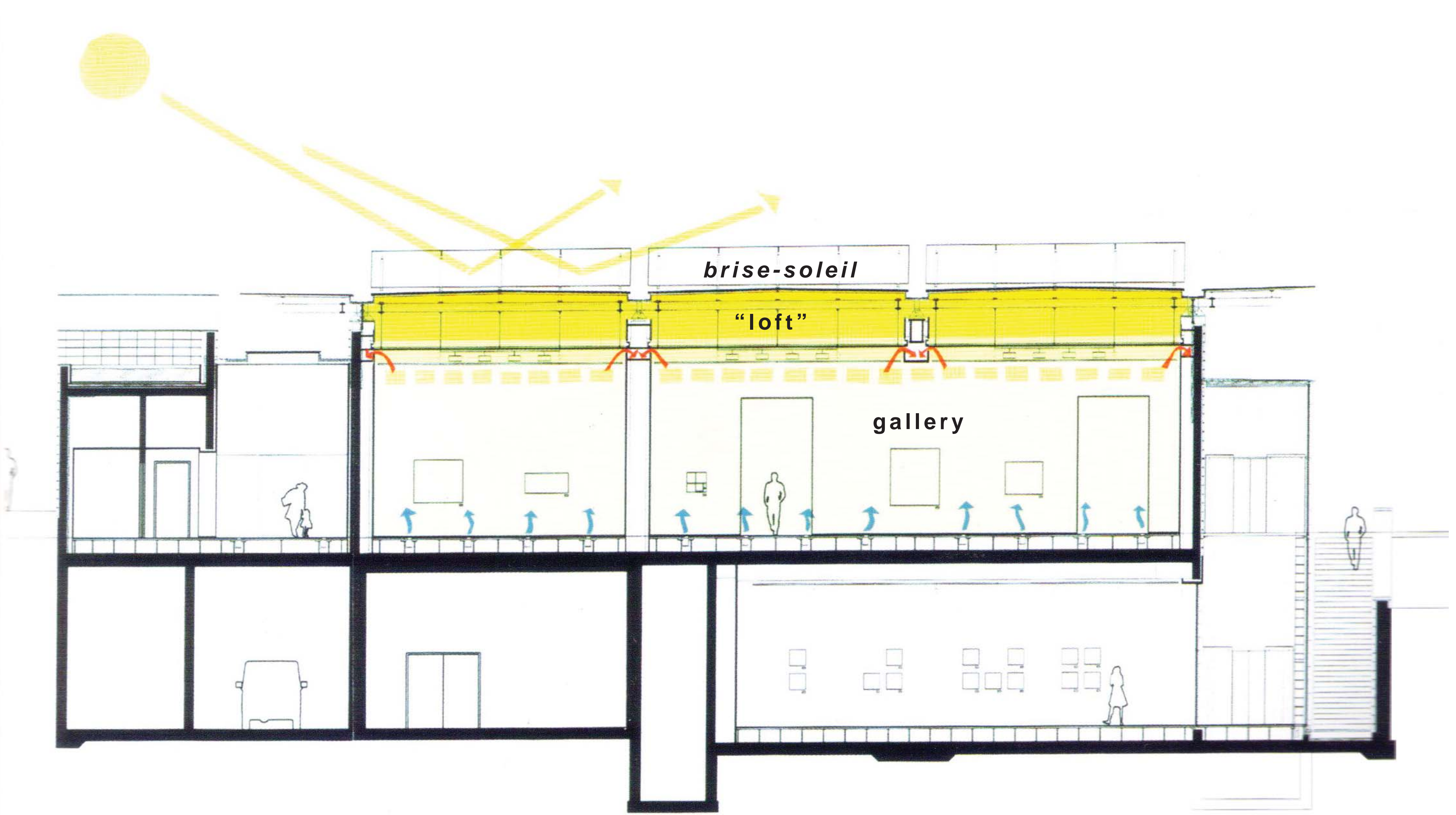


# Beyeler Foundation Museum

Basel, Switzerland Renzo Piano Building Workshop



## multilayered roof system allows for daylit galleries

### A *brise-soleil*

fritted glass inclined and positioned to prevent direct sun penetration and maintain optimum admittance of diffused light

### B weatherproof layer

double glazed skin with an ultraviolet filter that removes the parts of the electromagnetic spectrum most likely to damage the artwork

### C computer motorized aluminum louvers

that control light levels in each room

### D "loft thermal buffer zone"

louver system lies in this zone between the ceiling and the roof, combined with *brise-soleil* prevents 98% of incident solar radiation from reaching the spaces below

### E laminated glass ceiling

designed to support maintenance access to the louver motors and electric lights

### F grid of perforated metal panels

incorporates a paper that diffuses the light once more and hides the "loft"

