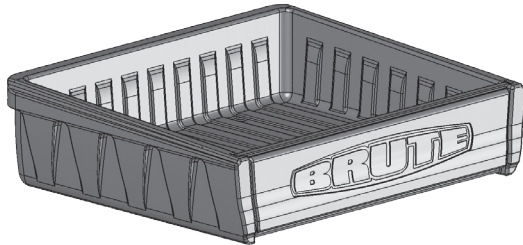


12/13/06

READ THROUGH INSTRUCTIONS BEFORE BEGINNING. DO NOT FULLY TIGHTEN BOLTS UNTIL INSTRUCTED.



MODEL YEARS 1999 and Older:

Cargo Bed: 8405 Strut Kit: 8105 SK

MODEL YEARS 2000 and Up:

Cargo Bed: 8405-2000 Strut Kit: 8105-2000 SK PC

STEP 2: Install Seat Back Supports

2000+ Seat Back Support
(Oldstyle Seat Back Support has a square aluminum plate at top. This plate should face forward. The Seat Back Support will still mount the same way).

5/16" Flat Washer
5/16" x 1-1/2" HEX Bolt
(2 x Both Sides)



- 1) Install Seat Back Supports.
NOTE: Seat back supports should be positioned with curve facing backwards.

DO NOT FULLY TIGHTEN BOLTS

- 2) Replace motor access cover.

FOR MODELS 2000+

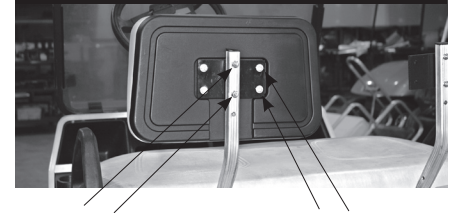
1/4" Flat Washer
1/4" x 1-1/2" HEX Bolt
(2 x Both Sides)



- 3) Replace the factory seat back plastic on the factory seat back cushion with the seat back plastic provided with cargo bed.
- 4) Align holes in seat back cushion with holes in aluminum seat back supports and install with appropriate hardware.

FULLY TIGHTEN ALL BOLTS

FOR MODELS 1999 AND OLDER



- (A) Insert bolts from front - thru plastic side:
1/4" x 1 1/2" FHP Bolt
1/4" Flat Washer
1/4" Nyloc Nut
(2 x Both Sides)
- (B) 1/4" x 1" Hex Bolt
1/4" Flat Washer
(4 x Both Sides)
(Hardware provided with plate kit)

(Hardware provided with plate kit)

- 3) Mount the 2 plate kits to the seat back supports using (A).

- 4) Mount the 2 factory seat back cushions to the plate kits (B).

FULLY TIGHTEN ALL BOLTS

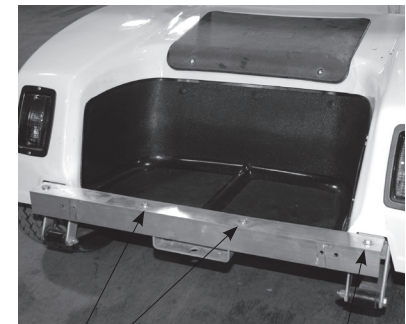
STEP 1: Prepare Car for Installation



Remove the following:

- top
- rear struts
- bench back cushion
- seat bottom cushion
- motor access cover
- bag rack assembly
- rear bumper

STEP 3: Mount Bumper Angle



- | | |
|---------------------------|-----------------------------|
| 1/4" x 2 1/2" HEX Bolt | 1/4" x 1" HEX Bolt |
| 1/4" Flat Washer (top) | 1/4" Flat Washer (top) |
| 1/4" Flat Washer (bottom) | 1/4" Flat Washer (bottom) |
| 1/4" Nyloc Nut | 1/4" Nyloc Nut |
| (2 - Inside Holes) | (Outside Hole - Both Sides) |

FULLY TIGHTEN ALL BOLTS

PROPRIETARY & CONFIDENTIAL
THE INFORMATION CONTAINED IN THIS DOCUMENT IS THE SOLE PROPERTY OF CUSTOM GOLF CAR SUPPLY. ANY REPRODUCTION IN PART OR AS A WHOLE, WITHOUT THE WRITTEN PERMISSION OF CUSTOM GOLF CAR SUPPLY IS PROHIBITED.

12/13/06

READ THROUGH INSTRUCTIONS BEFORE BEGINNING. DO NOT FULLY TIGHTEN BOLTS UNTIL INSTRUCTED.

STEP 4: Mount Rear H-frame Supports



1) Install Rear H-frame Supports with curve facing backwards.
NOTE: Mount to inside holes on Bumper Angle.

1/4" x 1-3/4" HEX Bolt
1/4" Flat Washer (front)
1/4" Flat Washer (back)
1/4" Nyloc Nut
(Both Sides)

DO NOT FULLY TIGHTEN BOLTS

STEP 5: Mount Cargo Bed Base

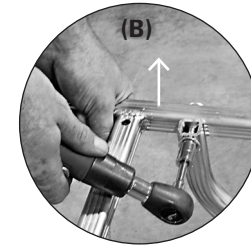


5/16" x 2-1/2" HEX Bolt
5/16" Flat Washer (front)
5/16" Flat Washer (back)
5/16" Nyloc Nut
(Both Sides)

1) Install H-frame by attaching it to the outside of the seat back supports (A).
(Hand tighten nuts).

2) Next attach it to the outside of the rear H-frame supports (B).

3) When tightening each side, pull up on H-frame so that it is flush with the top of the rear H-frame supports (B).



FULLY TIGHTEN ALL LOOSE BOLTS INCLUDING STEP 4

STEP 6: Reinstall Factory Top

IF YOU ARE NOT REINSTALLING THE FACTORY TOP, SKIP TO STEP 7.



1) Mount rear strut kit to H-frame.
NOTE: Rear strut kit is NOT included with the cargo bed and must be purchased separately.

Oldstyle Club Car (1999 & Older):
8105 Strut Kit

DS Club Car (2000 & Up):
8105-2000 Strut Kit

1/4" x 2-1/2" HEX Bolt
1/4" Flat Washer (front)
1/4" Flat Washer (back)
1/4" Nyloc Nut
(2x Both Sides)

(Hardware provided with strut kit)



2) Align factory top with front frame and rear struts. Reinstall top using the original top hardware. Do not fully tighten hardware until all bolts have been installed.

(Use original top hardware)

FULLY TIGHTEN ALL LOOSE BOLTS

DO NOT FULLY TIGHTEN REAR STRUT BOLTS UNTIL TOP IS INSTALLED

STEP 7: Mount Cargo Bed



1) Align the four holes in cargo bed with the four holes in the H-frame. Mount cargo bed using stainless steel hardware.

5/16" x 3-1/4" SS HEX Bolt
Special thick SS Washer (top)
5/16" Flat Washer (bottom)
5/16" Nyloc Nut
(2x Both Sides)

FULLY TIGHTEN BOLTS