

Harrisburg, PA 2007

Job Type:

2 GHz BAS Implementation

Industry:

Television Broadcast

Scope of Work:

Rooftop Installation

Site Survey

Inventory Coordination

Job Site Coordination

Project Management

Systems Integration

Project Details

A complete rooftop installation beginning with the erection of a 30' tower to hold Remote ENG Camera, Microwave Antenna and lightning suppression system.

Conduit installation was necessary to accommodate new cable runs.

The overall job requires care because the site is located on an apartment building occupied by private residents.



Installation of second & third tower section



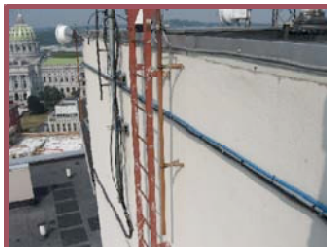
View of completed tower from rooftop. Antenna mount, microwave antenna remote ENG camera, all cabling & lightning suppression configured & installed by DSI.



ENG Remote Camera installation close up.



Tower Mount & Section Install



Complete Conduit & Cable Run

Challenges

1. Lack of existing structure
2. Several stages of implementation requiring expertise in RF, Cameras, Tower Construction & electrical.
3. Time Limitation
4. Inventory coordination

Solution

1. Create a tower structure suitable for station applications.
2. DSI staff is trained to meet the demands of a multi-staged, varied project, from start to finish.
3. Create & adhere to negotiated timeline.
4. Utilize DSI Project Mobilization team to assure proper materials & equipment supply.

DSI

RF Systems, Inc.

26H World's Fair Drive
Somerset, NJ 08873
732-563-1144
www.dsirf.com