

Diversity versus disparity and the radiation of modern cetaceans

Graham J. Slater, Samantha A. Price, Francesco Santini and Michael E. Alfaro

Proc. R. Soc. B 2010 **277**, 3097-3104 first published online 19 May 2010

doi: 10.1098/rsjb.2010.0408

Supplementary data

["Data Supplement"](#)

<http://rsjb.royalsocietypublishing.org/content/suppl/2010/05/18/rsjb.2010.0408.DC1.html>

References

[This article cites 33 articles, 10 of which can be accessed free](#)

<http://rsjb.royalsocietypublishing.org/content/277/1697/3097.full.html#ref-list-1>

[Article cited in:](#)

<http://rsjb.royalsocietypublishing.org/content/277/1697/3097.full.html#related-urls>

Subject collections

Articles on similar topics can be found in the following collections

[evolution](#) (1022 articles)

[taxonomy and systematics](#) (132 articles)

Email alerting service

Receive free email alerts when new articles cite this article - sign up in the box at the top right-hand corner of the article or click [here](#)

To subscribe to *Proc. R. Soc. B* go to: <http://rsjb.royalsocietypublishing.org/subscriptions>

Diversity versus disparity and the radiation of modern cetaceans

Graham J. Slater^{1,*}, Samantha A. Price^{2,*}, Francesco Santini¹
and Michael E. Alfaro¹

¹*Department of Ecology and Evolutionary Biology, University of California at Los Angeles, Los Angeles, CA 90025, USA*

²*National Evolutionary Synthesis Center (NESCent), 2024 West Main Street, Suite A200, Erwin Mills Building, Durham, NC 27705, USA*

Modern whales are frequently described as an adaptive radiation spurred by either the evolution of various key innovations (such as baleen or echolocation) or ecological opportunity following the demise of archaic whales. Recent analyses of diversification rate shifts on molecular phylogenies raise doubts about this interpretation since they find no evidence of increased speciation rates during the early evolution of modern taxa. However, one of the central predictions of ecological adaptive radiation is rapid phenotypic diversification, and the tempo of phenotypic evolution has yet to be quantified in cetaceans. Using a time-calibrated molecular phylogeny of extant cetaceans and a morphological dataset on size, we find evidence that cetacean lineages partitioned size niches early in the evolutionary history of neocetes and that changes in cetacean size are consistent with shifts in dietary strategy. We conclude that the signature of adaptive radiations may be retained within morphological traits even after equilibrium diversity has been reached and high extinction or fluctuations in net diversification have erased any signature of an early burst of diversification in the structure of the phylogeny.

Keywords: adaptive radiation; body size; Cetacea; disparity; diversity

1. INTRODUCTION

With approximately 84 extant (Mead & Brownell 2005) and 594 named fossil species (Paleobiology Database online systematics archive Uhen 2010), cetaceans (whales, dolphins, porpoises) represent what is arguably the most successful invasion of the marine environment by a group of tetrapods. The cetacean fossil record spans roughly 53 Myr (Fordyce 2003; Berta *et al.* 2006), although modern whales and dolphins (Neoceti) first appear around 34 Ma. Despite an extensive fossil record, surprisingly little is known about the tempo of the neocete radiation. It has, however, been suggested to have been ‘explosive’, driven by the evolution of key characters relating to sociality and brain size (Marino *et al.* 2006), echolocation and baleen as key innovations in the odontocetes and mysticetes, respectively (Fordyce 1992), or radiation into vacant niches following the extinction of archaeocete lineages in the Early Oligocene (Fordyce & de Muizon 2001; Fordyce 2003; Clementz *et al.* 2006).

The near-simultaneous appearance of key innovations and ecological opportunity provides a rationale for hypothesizing that crown cetaceans might be the product of an Early Oligocene adaptive radiation. Despite varied

definitions (Givnish & Sytsma 1997; Losos 2009; Olson & Arroyo-Santos 2009), a pervasive view of adaptive radiation is that it is the product of rapid divergence into new adaptive zones, resulting in a diverse, ecologically disparate clade (e.g. Simpson 1944; Schluter 2000; Harmon *et al.* 2003). Under such an adaptive radiation hypothesis, lineage diversification would be expected to have been rapid early in neocete history, along with simultaneous increases in ecological and/or functional disparity as new lineages diverged to fill new adaptive zones (Simpson 1944; Schluter 2000; Harmon *et al.* 2003; Rabosky & Lovette 2008*a,b*). Both lineage diversification and ecomorphological evolution in such cases should show signatures of density dependence (Rabosky & Lovette 2008*a,b*), transitioning from initially rapid rates to slow, equilibrium rates as niche space fills towards capacity (Freckleton & Harvey 2006).

The only quantitative test of the adaptive radiation hypothesis in neocetes is equivocal. A recent exploration of lineage diversification using a time-calibrated molecular phylogeny finds no support for rapid speciation early in the evolutionary history of extant cetaceans (Steeman *et al.* 2009). Rather, Steeman *et al.* (2009) suggest that patterns of ocean restructuring during the Oligocene and Miocene are better explanations for cetacean diversification. However, tests of the rapid-speciation component of adaptive radiation based on molecular phylogenies assume low and sometimes constant rates of species turnover (Rabosky & Lovette 2008*a,b*), an assumption that may rarely be met in older clades, and certainly seems to be violated by the Neogene cetacean fossil record (Uhen & Pyenson 2007). Furthermore, such tests assume that lineage diversification is

* Authors for correspondence (gslater@ucla.edu; saprice@ucdavis.edu).

[†] These authors contributed equally to this work and should be considered joint first authors.

[‡] Present address: Department of Evolution and Ecology, University of California at Davis, Davis, CA 95616, USA.

Electronic supplementary material is available at <http://dx.doi.org/10.1098/rspb.2010.0408> or via <http://rspb.royalsocietypublishing.org>.

correlated with the evolution of morphological or functional disparity, which may or may not be the case (Gavrilets & Losos 2009). A more rigorous approach would be to simultaneously test for signatures of adaptive radiation in patterns of lineage diversification and in the evolution of adaptive ecomorphological disparity. Unfortunately, such approaches are remarkably infrequent (but see Harmon *et al.* 2003) and have yet to be applied to crown group cetaceans.

We present a quantitative test of the adaptive radiation hypothesis in modern cetaceans that investigates the tempo of both lineage and ecomorphological evolution, using body length as a proxy for the many ecological, physiological and morphological traits that scale with size (see review by LaBarbara 1989). We construct a time scale for cetacean evolution incorporating most extant cetaceans species, based on mitochondrial sequence data and multiple fossil calibration points. Using this tree as a framework, we determine the patterns of lineage diversification and body size disparity, and test whether they are consistent with an early adaptive radiation. We then test whether dietary specialization may have driven differences in body size evolution in Cetacea, as is often the case for terrestrial mammals (e.g. Jarman 1974; Van Valkenburgh *et al.* 2004).

2. MATERIAL AND METHODS

(a) *Time tree inference*

We used BEAST v. 1.5.1 (Drummond & Rambaut 2007) to simultaneously infer cetacean phylogeny and divergence times for 84 cetacean taxa and two outgroups (hippopotamus and pig). Our sampling comprised all taxa for which cytochrome b (cytb) nucleotide sequences were available in GenBank. Following an extensive search of the comprehensive cetacean Paleobiology Database (Uhen 2010) and fossil cetacean literature, we identified seven fossils that could be unambiguously assigned to nodes within the phylogeny to serve as calibration points. These fossils spanned 55–10 Myr and were used to calibrate a relaxed molecular clock using log-normally distributed priors. Full details of the phylogenetic analyses conducted are provided in the electronic supplementary material accompanying this article.

(b) *Lineage diversification*

The summary statistic γ can be used to determine the extent to which branching events in a molecular phylogeny depart from those expected under a constant-rates process. We assessed γ for our cetacean phylogeny using the Monte Carlo constant-rates (MCCR) test (Pybus & Harvey 2000), as this approach allowed us to account for missing taxa. To further test for temporal slowdowns in diversification rate consistent with adaptive radiation, we compared the fit of a constant-rates or Yule model with exponential and logistic density-dependent decline models of lineage accumulation (DDX and DDL, respectively; Rabosky & Lovette 2008a) using Akaike information criterion (AIC) scores and Akaike weights (Burnham & Anderson 2002). MCCR tests and rate fitting were done using the LASER package (Rabosky 2006) for R.

To identify potential diversification rate shifts within crown cetaceans, we applied a recently developed method, MEDUSA (Alfaro *et al.* 2009), to a diversity tree of cetaceans. A diversity tree is a time-calibrated phylogenetic tree

where each tip has been assigned a species richness value, based on taxonomic diversity. In previous studies (e.g. Alfaro *et al.* 2009), species richness values have been assigned to branches representing orders or other higher-level groupings of vertebrates. In our study, we assigned most tips a diversity of one, as we were working with a species-level tree. To account for missing species, we collapsed the genera *Mesoplodon* and *Globicephala*, and assigned them species richness values of 14 and 3, respectively. MEDUSA is a stepwise procedure that first fits a birth–death model to the diversity tree using a joint phylogenetic and taxonomic likelihood function developed by Rabosky *et al.* (2007). Next, the AIC score of this two-parameter model (one birth rate and one death rate) is compared with a five-parameter model where the birth and death rates are allowed to shift on the optimal branch of the phylogeny. If this five-parameter model (two birth rates, two death rates and a shift-location parameter) produces a substantial improvement in the AIC score, the five-parameter model is retained and compared with the best eight-parameter model. This process continues until the addition of rate parameters no longer improves the overall AIC score. For this study, we used an improvement in AIC score of 4 units or greater as the threshold for retaining rate shifts (Burnham & Anderson 2002).

(c) *Body size disparity*

We compiled data on average adult female body length and diet from the literature for each species in our phylogeny, where available (electronic supplementary material, table S3). Length estimates were preferred over mass as length can be more accurately estimated from photos and carcasses washed up on beaches (Whitehead & Mann 2000). Females were used as they tend to be the larger sex in cetaceans. Averages were preferred over maximum lengths so as to minimize the effects of outliers, geographical variants or misreported measurements. Body size data were natural log (ln)-transformed prior for all subsequent analyses. We defined three functionally different dietary categories: filter feeders, cephalopod specialists (greater than 70% squid in diet) and generalist fish eaters that can also include squid and crustaceans in their diet. The orca (*Orcinus orca*), which is the largest member of the dolphin family (Delphinidae), is unique among extant cetaceans as at least some populations specialize on large vertebrate prey such as pinnipeds and other cetaceans ('transient type'; Bigg *et al.* 1990). The orca was therefore removed from our analyses, which looked for an association between size and diet.

To test whether cetacean body size evolution has slowed through time, we used the node-height test (Freckleton & Harvey 2006). We computed the absolute value of standardized independent contrasts (Felsenstein 1985) for body size on our tree and correlated them with the height of the node at which they are generated. Because independent contrasts are Brownian rate parameters for the branches over which they are calculated (McPeck 1995), a significant positive relationship between node age and absolute contrast value would indicate that rates of body size evolution have slowed through time, consistent with niche-filling (Freckleton & Harvey 2006). Following Harmon *et al.* (2003), we also calculated mean subclade disparity through time for body size. We compared observed body size disparity across our tree with that expected under a pure Brownian process by simulating body size evolution 10 000 times across our tree. The mean subclade disparity values for the observed and

simulated data were plotted against node age and the morphological disparity index (MDI) calculated. MDI quantifies the overall difference in relative disparity of a clade compared with the expectation under the null Brownian motion model (Harmon *et al.* 2003). Negative MDI values indicate lower subclade disparity than expected under Brownian motion and are a common property of adaptively radiating clades. All analyses were conducted in R using the packages APE (Paradis *et al.* 2004) and GEIGER (Harmon *et al.* 2008).

To test whether body size differences among cetacean clades may be explained by dietary specialization, we used a model-fitting approach to assess the null model of evolution under a pure Brownian process (Thomas *et al.* 2009). We tested three alternative scenarios against this null model: (i) the same rate but different means for dietary groups; (ii) different rates and different means for dietary groups; and (iii) different rates but the same mean. Internal branches were assigned to dietary groups based on ancestral state reconstructions conducted in MESQUITE v. 2.7 (Maddison & Maddison 2009) using the MK1 likelihood model, which assumes a constant transition rate between dietary categories, as changes are rare. A difference of two negative log-likelihood units was taken as support for one state over the others. Where multiple states were equally likely, the state with the highest proportional likelihood was used. We assessed fit of the four models based on small-sample corrected AIC (AICc) scores and Akaike weights. We also repeated the dietary analysis using an Ornstein–Uhlenbeck (OU) model of trait evolution (Hansen 1997), which allowed size to evolve towards an adaptive optimum for each dietary category. For simplicity, throughout the rest of the paper we focus on the Brownian models, as the OU model fitted the data worse than the best-fitting Brownian model. Full details of the Brownian and OU model methods are given in the Methods section of the electronic supplementary material.

3. RESULTS

(a) Time tree inference

Our time tree (figure 1) is broadly congruent with other recently published studies of cetacean phylogeny (McGowen *et al.* 2009; Steeman *et al.* 2009). The split between hippopotamuses and cetaceans dates to 54.5 Ma (95% high posterior density, HPD: 54.1–55.1), and extant cetaceans (Neoceti) share a most recent common ancestor at 36.9 Ma (95% HPD: 34.4–39.9). Crown mysticetes originated at 28.8 Ma (95% HPD: 28–30.1). Crown odontocetes originated at 34.8 Ma (95% HPD: 30.9–38.7) and show a gradual pattern of lineage divergence. The sperm whales (Physeteroidea), beaked whales (Ziphiidae) and river dolphins (Platinistidae, Lipotidae, Iniidae and Pontoporidae) are old, originating prior to 20 Ma. The remaining odontocete families within the Delphinoidea are younger than 15 Myr old and the most speciose cetacean clade, Delphinidae, containing 36 of 84 species, is less than 10 Myr old.

(b) Lineage diversification

The MCCR test found no evidence for accelerated diversification in the early history of cetaceans ($\gamma = 0.363$, $p = 0.72$), a finding that is supported visually by a lineage-through-time plot (figure 2). However, when we compare the fit of the constant-rates model with the two density-dependent decline models of diversification for

our tree, we are unable to find strong support for one model over the others (table 1). Therefore, we are unable to rule out a pattern of declining diversification rates even though γ is positive.

MEDUSA revealed strong support for a rate shift at the node uniting crown Delphinidae, excluding *Orca* and *Orcaella* ($\Delta\text{AIC} = 15.07$; figure 1). The net diversification rate for this clade (0.2772 lineages Myr^{-1}) was over three times higher than the background rate of diversification in other cetaceans (0.086 lineages Myr^{-1}). In order to account for potential biases in the MCCR test or diversification models that might result from the explosive delphinid radiation, we truncated our tree at 10 Ma, just prior to the delphinid radiation, and recomputed γ and AIC scores for the fit of the three diversification process models. The MCCR test still fails to provide a significantly negative γ ($\gamma = -0.750$; $p = 0.22$), although support for the two density-dependent decline models increases slightly, relative to the constant-rates model (table 1).

(c) Body size disparity

The node-height test resulted in a positive but non-significant relationship between the absolute values of standardized length contrasts and node age ($r = 0.212$, d.f. = 71, $p = 0.064$). A scatter plot of contrast values against node age (figure 3) reveals that two young contrasts, corresponding to those between *O. orca* and *Orcaella brevirostris*, and between *Feresa attenuata* and *Globicephala* species, are extreme outliers, with large rate values. Repetition of the node-height test with these outliers removed results in a significant positive relationship between absolute standardized contrasts and node age ($r = 0.218$, d.f. = 69, $p = 0.006$), indicating that body size evolution has slowed through time, which is consistent with the niche-filling hypothesis (Freckleton & Harvey 2006).

Subclade disparity through time is lower than expected under a Brownian motion model of body size evolution (figure 4). This is confirmed quantitatively by an MDI of -0.17 . Despite an overall pattern of decrease through time, subclade disparity shows two increases: one occurring shortly after the origination of neocetes and another between approximately 11 and 6 Ma (approx. 0.7–0.825 relative time), coincident with the radiations of several extant families, such as Delphinidae, Phocoenidae and Balaenopteridae. We assessed the probability of obtaining a negative MDI when the underlying evolutionary process follows Brownian motion by computing the MDI between each of the 10 000 simulated datasets and our cetacean data, and determining the proportion of cases in which an MDI greater than or equal to zero is obtained. The resulting proportion of 0.0542 suggests that our result is unlikely to be the result of morphological evolution under a simple, one-rate Brownian motion process.

Comparison of models of body size evolution in relation to differences in diet results in preferential selection of the model with the same rate but different phylogenetic means for the three dietary groups (tables 2 and 3). Substantially more weight falls on this model than any other. The next best models are the Brownian motion model with different rates and different

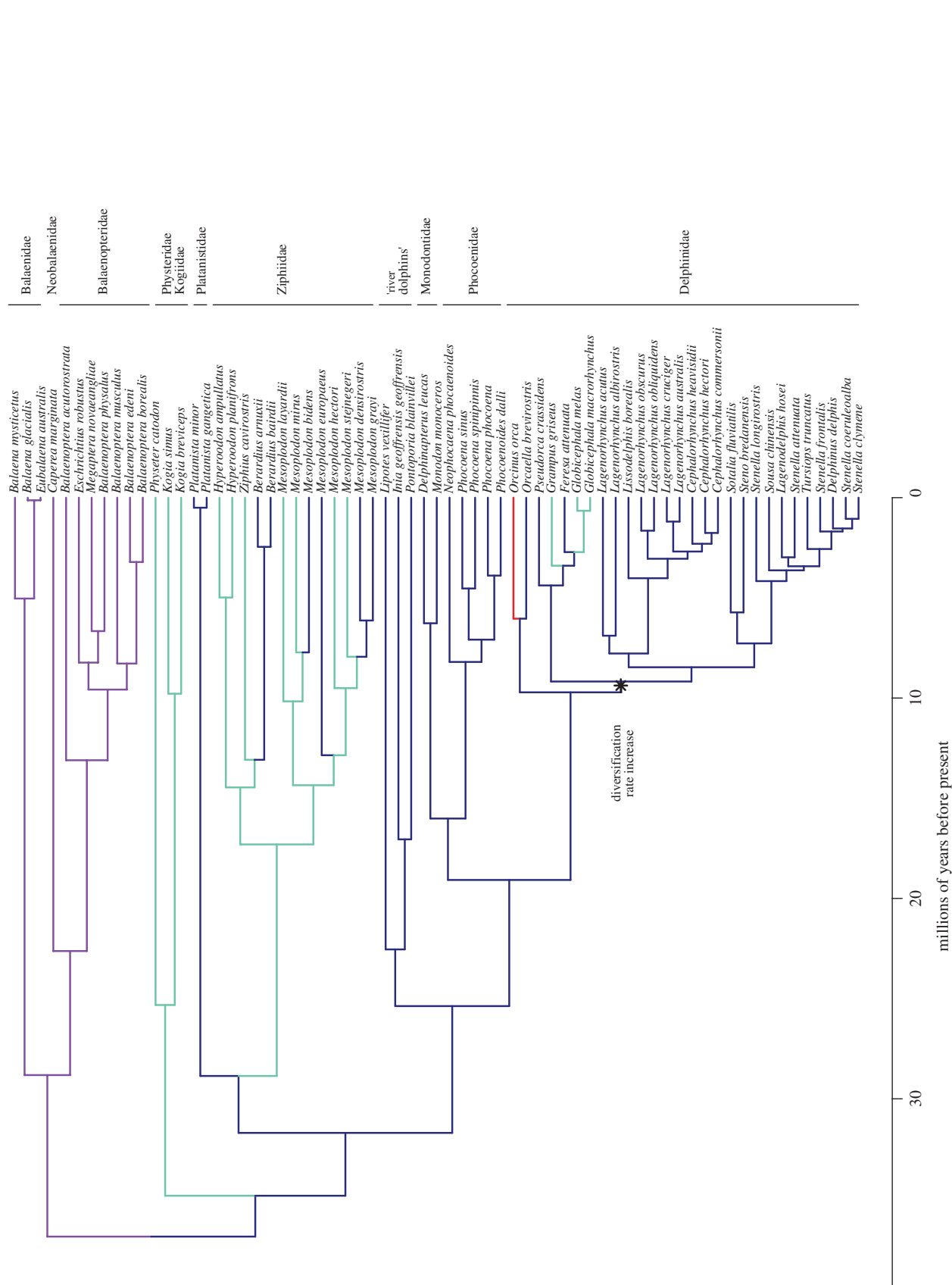


Figure 1. Time-calibrated phylogeny of Cetacea including all species for which both size and dietary data were available. Colours indicate diet: generalist fish (blue); filter feeder (purple); squid specialist (aquamarine); marine mammals (red). Diets assigned to internal nodes were reconstructed using maximum likelihood. The diversification rate increase in Delphinidae was detected using MEDUSA (see text).

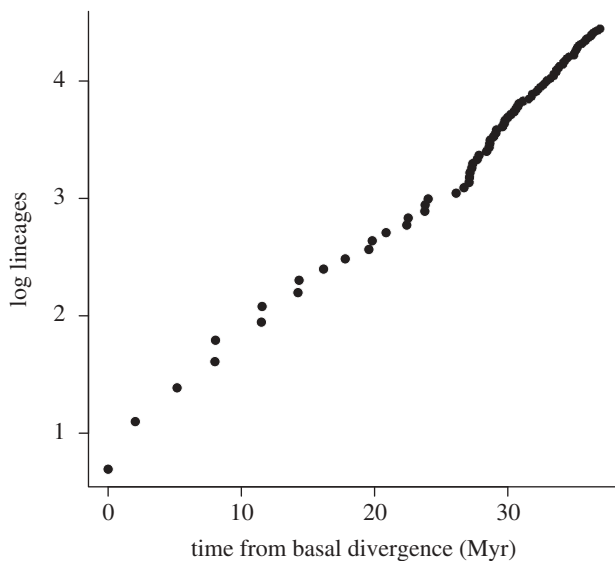


Figure 2. Lineage-through-time plot derived from the complete, time-calibrated cetacean phylogeny. The upturn at approximately 26 Myr after basal divergence indicates an increased net rate of diversification over the past 10 Myr.

Table 1. Results from fitting diversification-process models to the complete ultrametric cetacean tree and a tree truncated at 10 Ma. Models are ranked from best to worst, according to AIC scores and Akaike weights (wtAIC). dAIC scores indicate the difference between the candidate model and the best-fitting model. Also given is the log likelihood (Lk) for each model.

model	Lk	AIC	dAIC	wtAIC
<i>complete ultrametric cetacean tree</i>				
Yule	22.521	-43.042	0	0.569
DDX	22.582	-41.164	1.878	0.222
DDL	22.521	-41.042	2.000	0.209
<i>tree truncated at 10 Ma</i>				
Yule	-25.354	52.709	0	0.399
DDX	-24.580	53.161	0.452	0.318
DDL	-24.701	53.402	0.693	0.282

phylogenetic means for dietary groups, and the OU model with different optimal sizes for each group. Δ AICc for both of these models are greater than 4 (table 2), indicating that they fit relatively poorly in comparison to the best-fit model (Burnham & Anderson 2002). The other two Brownian models performed extremely poorly relative to the best model (table 2).

4. DISCUSSION

A central prediction of the adaptive radiation hypothesis *sensu* Schluter (2000) is that phenotypes diversify early in clade history along ecological axes. Our study reveals clear evidence that body size niches were partitioned early in the evolutionary history of modern Cetacea and that these broadly correspond to different dietary strategies. However, the case for a neocete adaptive radiation is complicated by the lack of evidence for rapid initial lineage diversification in the group. Like Steeman *et al.* (2009), we found no evidence for an early burst of

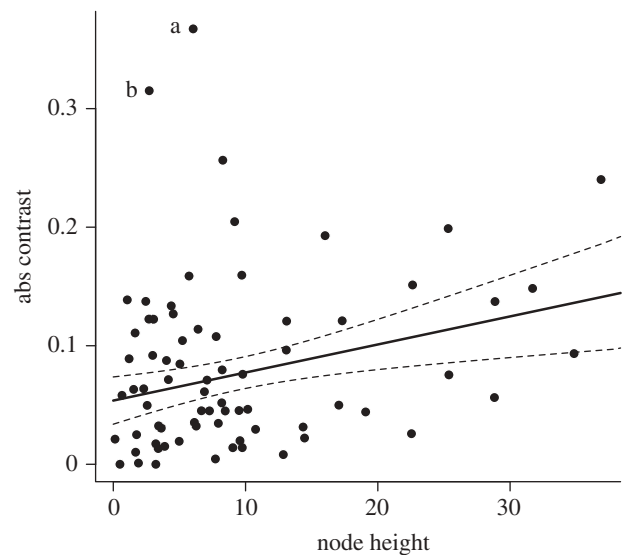


Figure 3. Plot of absolute body size (abs) contrasts against node height for the node-height test. The two outliers are contrasts between (a) *O. orca* and *O. brevirostris*, and (b) *Globicephala* spp. and *F. attenuata*. The regression line and 95% confidence intervals are computed after removal of the outliers.

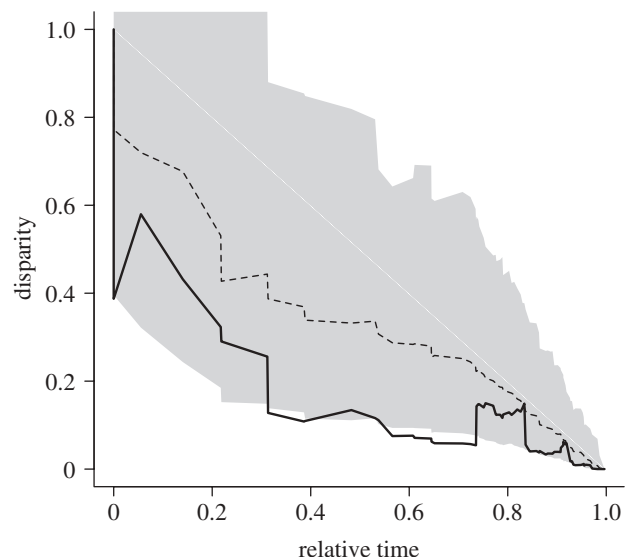


Figure 4. Mean subclade disparity through time (DTT) for cetacean body size (lower solid line). The upper dashed line indicates the median subclade DTT based on 10 000 simulations of character evolution on the cetacean phylogeny under Brownian motion. The grey shaded area indicates the 95% DTT range for the simulated data.

diversification in extant neocetes based on the γ statistic (Pybus & Harvey 2000). Although we did identify a phylogenetically restricted shift in diversification rate in the Delphinidae, analysis of the tempo of neocete diversification before this radiation still shows a pattern that is not significantly different from a constant-rates process.

(a) Lineage diversification and the possibility of adaptive radiation of modern cetaceans

It is well understood that extinction can mask the signal of rapid initial diversification in molecular phylogenies (Pybus & Harvey 2000; Rabosky & Lovette 2008a,b;

Table 2. Comparison of the fit of four Brownian motion (BM) models and one Ornstein–Uhlenbeck (OU) model of body size evolution based on diet type in cetaceans. Models are ranked from best to worst, using the small-sample corrected Akaike’s information criterion (AICc) and Akaike weights (wtAICc). Δ AICc scores indicate the difference between the candidate model and the best-fitting model. Also given are the number of parameters for each model (K) and the log likelihood (Lk).

model	K	Lk	AICc	Δ AICc	wtAICc
BM: same rate/different means	4	−11.121	30.898	0	0.96
BM: different rates/different means	6	−11.025	35.473	4.575	0.01
OU: same rate/multiple optima	5	−12.303	35.606	4.708	0.01
BM: same rate/same mean	2	−16.522	37.235	6.337	0.02
BM: different rates/same mean	4	−16.189	41.034	10.135	0.01

Table 3. Comparison of parameter estimates for the four Brownian motion (BM) models and one Ornstein–Uhlenbeck (OU) model of body size evolution based on diet type in cetaceans. Models are ranked from best to worst based on AICc scores, as in table 2. Body size values are phylogenetic means for Brownian models and optimal trait values for OU models. The ‘strength of selection’ parameter, α , is estimated in the OU model only.

model	body size			rates			α
	fish	squid	filter	fish	squid	filter	
BM: same rate/different means	1.171	0.270	1.373	0.378–2.41	0.29–2.42	0.51–3.96	—
BM: different rates/different means	1.171	0.270	1.373	0.378–2.42	0.29–2.43	0.51–3.97	—
OU: same rate/multiple optima	0.936	2.469	4.119	0.42	0.42	0.42	0.71539
BM: same rate/same mean	1.700	1.700	1.700	0.378–2.41	0.29–2.42	0.51–3.96	—
BM: different rates/same mean	1.700	1.700	1.700	0.378–2.42	0.29–2.43	0.51–3.97	—

Quental & Marshall 2009). Both γ and the MCCR test are conservative with respect to extinction, which can lead to increased type II errors (Pybus & Harvey 2000; Rabosky & Lovette 2008a,b). Furthermore, even if diversification dynamics are density-dependent and extinction rates are low, γ values will be less negative than the critical value of -1.645 if a clade has yet to reach its equilibrium diversity, or if it has reached equilibrium and a constant-rates pattern of diversification has eroded the signal of density-dependent declines in rate (Quental & Marshall 2009). Pybus & Harvey (2000) warned that a non-significant γ did not allow acceptance of a null, constant-rates process. Our analyses using the model-fitting approach of Rabosky & Lovette (2008a,b) validate this. The two variants on a density-dependent speciation process (Rabosky & Lovette 2008a) together receive about the same weight as the constant-rates diversification processes for our cetacean phylogeny. Therefore, one possible explanation for not finding an early burst of diversification in modern neocetes is that sufficient extinction has occurred within the group to erase the signature of a rapidly radiating clade. Evidence in support of this explanation comes from the cetacean fossil record; multiple radiations that have left no living descendants, including large predacious forms (Physteroidea) and open-ocean piscivores (Kentriodontidae), or clades that were formally more speciose but have subsequently waned and been ecologically replaced (archaic river dolphin clades: Lipotidae, Iniidae, Pontoporidae and Platinistoidea). Uhen & Pyenson (2007) also found evidence of increased rates of extinction for neocetes in the Late Miocene. Taken together, these lines of evidence suggest that high rates of turnover have affected cetaceans during the Neogene, but whether it actually eroded the signal of an early burst of diversification cannot be determined from our dataset.

(b) *The evolution of ecomorphological disparity in cetaceans*

Using the model-fitting approach of Thomas *et al.* (2006, 2009), we provide evidence for a correlation between body size and diet, supporting the hypothesis that there is an ecological basis for early size diversification in Cetacea, which is indicative of an adaptive radiation (*sensu* Schluter 2000). We found strong preference for a model of body size evolution with different phylogenetic means among dietary strategies but the same rate of size evolution across Cetacea. The largest phylogenetic mean body size was recovered for the Mysticeti, which includes the largest animal to have ever lived, the blue whale (*Balaenoptera musculus*). Extant mysticetes are specialist filter feeders, using their baleen to filter small marine animals (mainly zooplankton) from the water. The acquisition of large body sizes by mysticetes, which occurred in the Miocene (Fordyce & Barnes 1994), is commonly ascribed to the abundance and ease of capture of their highly nutritious prey.

Odontocetes differ from mysticetes in exhibiting a general decrease in body size through time. Extant odontocetes are typically fish or squid feeders, with fish feeding being the ancestral, and more widely distributed, dietary strategy. The phylogenetic mean body size for fish feeders was larger than that found for squid feeders (table 3). However, extant squid specialists are generally much larger than their small piscivorous relatives. Squid feeders form a polyphyletic assemblage nested within the generally piscivorous odontocetes. The small phylogenetic mean of squid feeders indicates that this guild attained their large body sizes from smaller ancestors. In fact, all squid feeders are larger than the phylogenetic mean of the group and all but one (*Kogia breviceps*) are larger than the phylogenetic mean of fish feeders. Although

our models show that rates of body size evolution have been similar among dietary groups, distinct patterns of selection appear to have been present in cetacean guilds. While fish-feeding odontocetes declined in size over time, large body size appears to have been selected for in squid-feeding taxa. Existing research demonstrates the functional utility of this condition for these taxa. Extant squid specialists dive to great depths to hunt and capture prey. Most species make routine dives of 800–1000 m (Heide-Jørgensen *et al.* 2002 and references therein), and the deepest diver, the sperm whale (*Physeter catodon*), dives to depths of 2035 m (Watkins *et al.* 1993) for durations of at least 138 min (Watkins *et al.* 1985). Larger animals have increased absolute oxygen capacities and decreased mass-specific metabolic rates, providing significant physiological advantages when diving to great depths. Indeed, size scales positively allometrically with odontocete dive capacity (Noren & Williams 2000). Our disparity-through-time analysis shows that size variation, and therefore possibly dietary strategy, was partitioned among subclades relatively early in cetacean history. This is in broad agreement with the fossil record, which indicates that the teutophagous dietary strategy has been present throughout most of the evolutionary history of several odontocete families (Fordyce & Barnes 1994).

Although our disparity-through-time analysis shows low levels of subclade disparity, there are some periods of cetacean history that show elevated levels of subclade disparity that are discordant with the hypothesis of adaptive radiation. This is particularly true during the period between 11 and 6 Ma (figure 4). This may be a case of ‘the exception proves the rule’ as cephalopod specialization mostly occurs within clades that are old relative to most odontocetes (Physeteridae, Kogiidae and Ziphiidae), but recent transitions to squid specialization have occurred within the past 10 Myr in the primarily piscivorous Delphinidae (figure 1). The recent dietary shift to squid feeding in *Grampus* and, in particular, *Globicephala* (figure 3) explains the rapid increase in body size of these taxa compared with their delphinid relatives. Another delphinid, *O. orca*, also exhibits a recent rapid increase in size at this time, which may be explained by a different dietary transition. Orcas are unique among extant cetaceans as they prey on large marine mammals, including pinnipeds, sperm whales (*P. catodon*) and grey whales (*Eschrichtius robustus*). The rapid evolution of large body size in orcas presumably reflects a response to this specific predatory strategy, rather than an adaptation to deep diving and squid feeding.

5. CONCLUSION

Our analyses point to the importance of considering both diversity and disparity when testing for predictions of adaptive radiation. It is particularly notable that patterns of morphological evolution can retain a signature of early niche-filling, despite some evidence for secondary radiations into areas of niche space not previously occupied by the subclade in question (e.g. *Globicephala*). It may be that the signature of adaptive radiation is retained in patterns of ecomorphological disparity even after equilibrium species diversity has been reached and high extinction or fluctuations in net diversification have erased any signature in the structure of the phylogeny.

This would be expected if early lineage diversification also results in ecological niche-filling, leaving limited opportunity for subsequent switches in ecology by younger members of extant subclades (Harmon *et al.* 2003). Alternatively, speciation and ecomorphological diversity in neocetes may not be linked (i.e. if there was no concomitant increase in lineage diversity when size and dietary niches were partitioned). The rich cetacean fossil record provides a valuable resource for testing these ideas, once inclusive phylogenetic analyses become available.

We thank Luke Harmon, Shauna Price, Gavin Thomas and two anonymous reviewers, as well as Associate Editor Trevor Price for helpful comments on the manuscript. Thanks also to Justine Jackson-Ricketts, an undergraduate work-study student at Duke University, for collecting the majority of the dietary data. Work was supported by National Science Foundation grants DEB 0918748 to M.E.A., DEB 0842397 to M.E.A. and F.S., DEB 0709792 to G.J.S. and a NESCent postdoctoral fellowship to S.A.P. (NESCent NSF no. EF-0423641). MEDUSA development was partially supported by an R hackathon and Short Term Visitors Award from NESCent.

REFERENCES

- Alfaro, M. E., Santini, F., Brock, C., Alamillo, H., Dornburg, A., Rabosky, D. L., Carnevale, G. & Harmon, L. J. 2009 Nine exceptional radiations plus high turnover explain species diversity in jawed vertebrates. *Proc. Natl Acad. Sci. USA* **106**, 13 410–13 414. (doi:10.1073/pnas.0811087106)
- Berta, A., Sumich, J. L. & Kovacs, K. M. 2006 *Marine mammals: evolutionary biology*, 2nd edn. San Diego, CA: Associated Press.
- Bigg, M. A., Olesiuk, P. F., Ellis, G. M., Ford, J. K. B. & Balcomb, K. C. 1990 Social organization and genealogy of resident killer whales (*Orcinus orca*) in the coastal waters of British Columbia and Washington State. *Rep. Int. Whal. Comm.* **12**, 383–405.
- Burnham, K. P. & Anderson, D. R. 2002 *Model selection and multimodel inference: a practical information-theoretic approach*. New York, NY: Springer.
- Clementz, M., Goswami, A., Gingerich, P. & Koch, P. 2006 Isotopic records from early whales and sea cows: contrasting patterns of ecological transition. *J. Vertebr. Paleontol.* **26**, 355–370. (doi:10.1671/0272-4634(2006)26[355:IRFEWA]2.0.CO;2)
- Drummond, A. J. & Rambaut, A. 2007 BEAST: Bayesian evolutionary analysis by sampling trees. *BMC Evol. Biol.* **7**, 1–8.
- Felsenstein, J. 1985 Phylogenies and the comparative method. *Am. Nat.* **126**, 1–25.
- Fordyce, R. E. 1992 Cetacean evolution and Eocene/Oligocene environments. In *Eocene–Oligocene climatic and biotic evolution* (eds D. R. Prothero & W. Berggren). Princeton, NJ: Princeton University Press.
- Fordyce, R. E. 2003 Cetacean evolution and Eocene–Oligocene oceans revisited. In *From greenhouse to icehouse: the marine Eocene–Oligocene transition* (eds D. R. Prothero, L. C. Ivany & E. R. Nesbitt), pp. 154–170. New York, NY: Columbia University Press.
- Fordyce, R. E. & Barnes, L. G. 1994 The evolutionary history of whales and dolphins. *Annu. Rev. Earth Planet Sci.* **22**, 419–455. (doi:10.1146/annurev.earth.22.050194.002223)
- Fordyce, R. E. & de Muizon, C. 2001 Evolutionary history of whales: a review. In *Secondary adaptation of tetrapods to life in water. Proc. Int. Meeting, Poitiers 1996*

- (eds J.-M. Mazin & V. de Buffrenil), pp. 169–234. Munich, Germany: Verlag Dr Friedriech Pfeil.
- Freckleton, R. P. & Harvey, P. H. 2006 Detecting non-Brownian trait evolution in adaptive radiations. *PLoS Biol.* **4**, e373. (doi:10.1371/journal.pbio.0040373)
- Gavrillets, S. & Losos, J. B. 2009 Adaptive radiation: contrasting theory with data. *Science* **323**, 732–737. (doi:10.1126/science.1157966)
- Givnish, T. & Sytsma, K. 1997 *Molecular evolution and adaptive radiation*. New York, NY: Cambridge University Press.
- Hansen, T. F. 1997 Stabilizing selection and the comparative analysis of adaptation. *Evolution* **51**, 1341–1351. (doi:10.2307/2411186)
- Harmon, L., Schulte, J., Larson, A. & Losos, J. 2003 Tempo and mode of evolutionary radiation in iguanian lizards. *Science* **301**, 961–964. (doi:10.1126/science.1084786)
- Harmon, L., Weir, J., Brock, C., Glor, R. & Challenger, W. 2008 Geiger: investigating evolutionary radiations. *Bioinformatics* **24**, 129–131. (doi:10.1093/bioinformatics/btm538)
- Heide-Jørgensen, M. P., Bloch, D., Stefansson, E., Mikkelsen, B., Ofstad, L. H. & Dietz, R. 2002 Diving behaviour of long-finned pilot whales *Globicephala melas* around the Faroe Islands. *Wildl. Biol.* **8**, 307–313.
- Jarman, P. J. 1974 The social organisation of antelope in relation to their ecology. *Behaviour* **48**, 215–267. (doi:10.1163/156853974X00345)
- LaBarbara, M. 1989 Analyzing body size as a factor in ecology and evolution. *Annu. Rev. Ecol. Syst.* **20**, 97–117. (doi:10.1146/annurev.es.20.110189.000525)
- Losos, J. B. 2009 *Lizards in an evolutionary tree: ecology and adaptive radiation of anoles*. Berkeley, CA: University of California Press.
- Maddison, W. P. & Maddison, D. R. 2009 *MESQUITE: a modular system for evolutionary analysis*, v. 2.72. See <http://mesquiteproject.org>.
- Marino, L., Sol, D., Toren, K. & Lefebvre, L. 2006 Does diving limit brain size in cetaceans? *Mar. Mammal. Sci.* **22**, 413–425. (doi:10.1111/j.1748-7692.2006.00042.x)
- McGowen, M. R., Spaulding, M. & Gatesy, J. 2009 Divergence date estimation and a comprehensive molecular tree of extant cetaceans. *Mol. Phylogenet. Evol.* **53**, 891–906. (doi:10.1016/j.ympev.2009.08.018)
- McPeck, M. A. 1995 Testing hypotheses about evolutionary change on single branches of a phylogeny using evolutionary contrasts. *Am. Nat.* **45**, 686–703.
- Mead, J. G. & Brownell Jr, R. L. 2005 Order Cetacea. In *Mammal species of the world: a taxonomic and geographic reference* (eds D. E. Wilson & D. M. Reeder), 3rd edn, pp. 723–743. Baltimore, MD: Johns Hopkins University Press.
- Noren, S. & Williams, T. 2000 Body size and skeletal muscle myoglobin of cetaceans: adaptations for maximizing dive duration. *Comp. Biochem. Phys. A* **126**, 181–191.
- Olson, M. E. & Arroyo-Santos, A. 2009 Thinking in continua: beyond the ‘adaptive radiation’ metaphor. *BioEssays* **31**, 1337–1346. (doi:10.1002/bies.200900102)
- Paradis, E., Claude, J. & Strimmer, K. 2004 APE: analyses of phylogenetics and evolution in R language. *Bioinformatics* **20**, 289–290. (doi:10.1093/bioinformatics/btg412)
- Pybus, O. & Harvey, P. 2000 Testing macro-evolutionary models using incomplete molecular phylogenies. *Proc. R. Soc. Lond. B* **267**, 2267–2272. (doi:10.1098/rspb.2000.1278)
- Quental, T. B. & Marshall, C. R. 2009 Extinction during evolutionary radiations: reconciling the fossil record with molecular phylogenies. *Evolution* **63**, 3158–3167. (doi:10.1111/j.1558-5646.2009.00794.x)
- Rabosky, D. 2006 Laser: a maximum likelihood toolkit for detecting temporal shifts in diversification rates from molecular phylogenies. *Evol. Bioinform.* **2**, 247–250.
- Rabosky, D. & Lovette, I. 2008a Density-dependent diversification in North American wood warblers. *Proc. R. Soc. B* **275**, 2363–2371. (doi:10.1098/rspb.2008.0630)
- Rabosky, D. & Lovette, I. 2008b Explosive evolutionary radiations: decreasing speciation or increasing extinction through time? *Evolution* **62**, 1866–1875. (doi:10.1111/j.1558-5646.2008.00409.x)
- Rabosky, D. L., Donnellan, S. C., Talaba, A. L. & Lovette, I. J. 2007 Exceptional among-lineage variation in diversification rates during the radiation of Australia’s most diverse vertebrate clade. *Proc. R. Soc. B* **274**, 2915–2923. (doi:10.1098/rspb.2007.0924)
- Schluter, D. 2000 *The ecology of adaptive radiation*. Oxford, UK: Oxford University Press.
- Simpson, G. G. 1944 *The tempo and mode in evolution*. New York, NY: Columbia University Press.
- Steeiman, M. E. *et al.* 2009 Radiation of extant cetaceans driven by restructuring of the oceans. *Syst. Biol.* **58**, 573–585. (doi:10.1093/sysbio/syp060)
- Thomas, G. H., Freckleton, R. P. & Székely, T. 2006 Comparative analyses of the influence of developmental mode on phenotypic diversification rates in shorebirds. *Proc. R. Soc. B* **273**, 1619–1624. (doi:10.1098/rspb.2006.3488)
- Thomas, G. H., Meiri, S. & Phillimore, A. B. 2009 Body size diversification in *Anolis*: novel environment and island effects. *Evolution* **63**, 2017–2030. (doi:10.1111/j.1558-5646.2009.00694.x)
- Uhen, M. D. 2010 Cetacea online systematics archive 11. See *The paleobiology database*, http://paleodb.org/cgi-bin/bridge.pl?user=Guest&action=displayPage&page=OSA_Cetacea
- Uhen, M. D. & Pyenson, N. D. 2007 Diversity estimates, biases, and historiographic effects: resolving cetacean diversity in the Tertiary. *Palaeontol. Electron.* **10**, 1–22.
- Van Valkenburgh, B., Wang, X. & Damuth, J. 2004 Cope’s rule, hypercarnivory, and extinction in North American canids. *Science* **306**, 101–104. (doi:10.1126/science.1102417)
- Watkins, W. A., Moore, K. E. & Tyack, P. 1985 Investigations of sperm whale acoustic behaviors in the southeast Caribbean. *Cetology* **49**, 1–15.
- Watkins, W. A., Daher, M. A., Fristrup, K. M., Howald, T. J. & Notarbartolo di Sciara, G. 1993 Sperm whales tagged with transponders and tracked underwater by sonar. *Mar. Mam. Sci.* **9**, 55–67. (doi:10.1111/j.1748-7692.1993.tb00426.x)
- Whitehead, H. & Mann, J. 2000 Female reproductive strategies in cetaceans. In *Cetacean societies: field studies of dolphins and whales* (eds J. Mann, R. C. Connor, P. L. Tyack & P. L. H. Whitehead), pp. 219–246. Chicago, IL: University of Chicago Press.