

2017 Annual Report
Overland Park Community Garden, Inc.



The Dancing Carrot - The Tenacity of Mother Nature!

**2017 Annual Report
Overland Park Community Garden, Inc.**

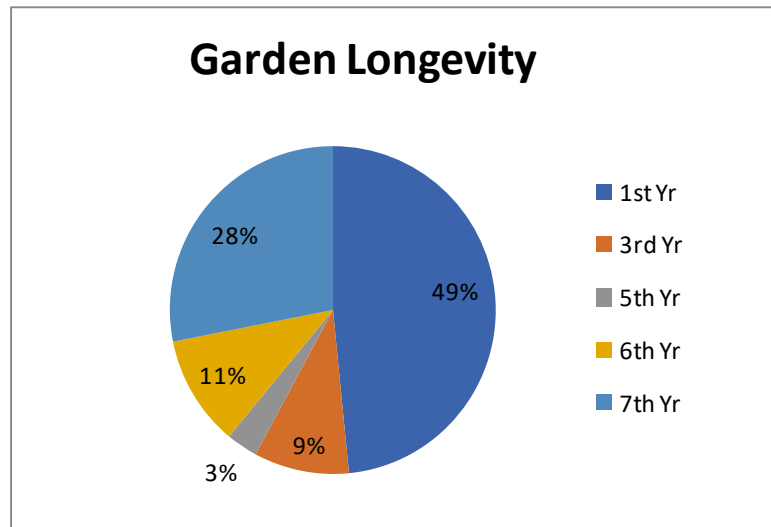
Mission Statement

To provide an enjoyable, accessible space for residents to grow healthy food using organic, sustainable and environmentally friendly methods.

2017 Was a Great Year for:

Growing!

- ❖ All plots were leased by the second week of March. There were 47 people on the wait list for the season.
- ❖ Over 52 gardeners participated in the garden.
- ❖ The Giving Grove fruit trees did well for their first full year. Our orchard steward pruned, pinched blooms and removed any fruits so all of the trees' energy would go into root formation. This will be the process for the next two years.
- ❖ It is great to see so many gardeners return year after year. Over half of the plots were tended by repeat gardeners.



Supporting Our Community !

- ❖ 115 pounds of produce was donated to the Valley View United Methodist Church's "Hope Chest" by the Grace Garden plot in OP Community Garden. This plot is a project of the environmental ministry of Grace Covenant Presbyterian Church. Many other gardeners shared their excess bounty with family and friends.

**2017 Annual Report
Overland Park Community Garden, Inc.**

President's Note

I try to jot notes throughout the growing season to help me write this summary. But as I'm pulling the information together, I came up empty handed. In reflection, it is because I did a lot of traveling over the summer and the garden took care of itself.

The one noticeable change was the appearance of a new pest, the Japanese beetle. It was another learning moment provided by the garden to understand the beetle's life cycle and the impact on the garden. There are so many moments like that for all involved in the garden.

A gardener wrote me "I love that I learned how to grow a garden organically. I have planted milk weed among other plants in my yard to encourage the monarch butterfly, too. Thank you for teaching and guiding along the way." This feedback underscores the intangible benefits the community garden provides to the people and the environment.

My note is not complete with thanking our land partner, the Johnson County Library and the Overland Park Parks Services department who provides mulch and water line maintenance to the garden. THANKS!

Bev Jaderborg

2017 Sights in the Garden



Monarch on the Milkweed



Pumpkin







Milkweed Seed Pods



Swiss Chard Harvest

**2017 Annual Report
Overland Park Community Garden, Inc.**

Donors

Level	Donor
 Land Partner \$ Priceless!	Johnson County Library
 Harvesting \$500+	City of Overland Park, Park Services Department
 Planting \$100+	D. and L. Jordan
 friends Under \$100	A. Scharnhorst Anonymous

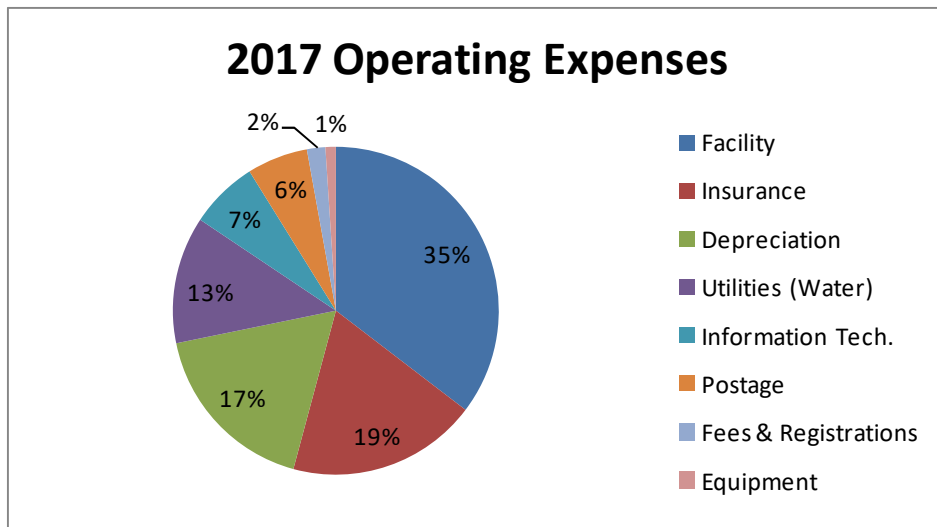
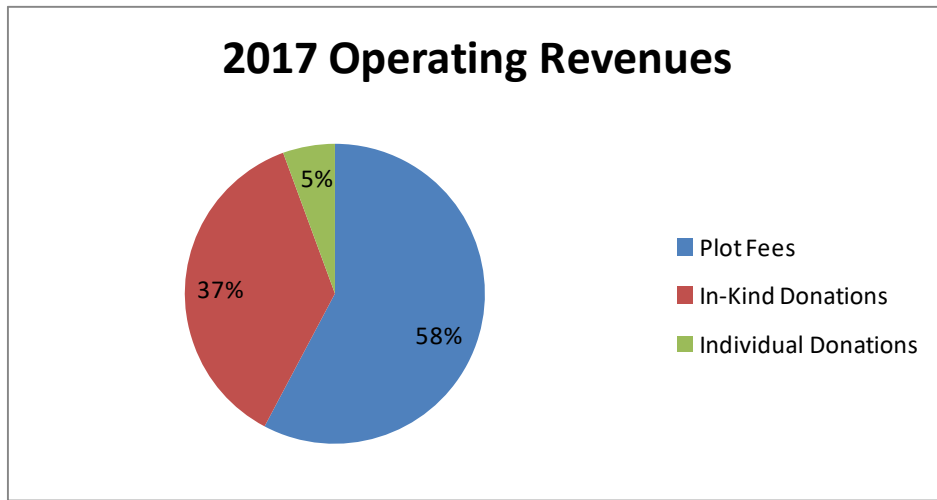
2017 Board of Directors

Bev Jaderborg	President
Ginny Williams	Treasurer
Bill Mace	Garden Manager
Barry Bailey	Giving Grove Steward

**2017 Annual Report
Overland Park Community Garden, Inc.**

Financials

For year ending 12/31/2017
 Operating Revenues = 2,234
 Operating Expenses = 2,201
 Net = 33



Balance Sheet

	As of 12/31/2017	As of 12/31/2016
ASSETS		
Cash	5,549	5,128
Gift Card	119	119
Fixed Asset - Shed	2,326	2,326
Accumulated Depreciation	(647)	(258)
TOTAL ASSETS	7,347	7,315
LIABILITIES & NET ASSETS		
Unrestricted Net Assets	5,422	5,390
Board Restricted Net Assets	1,925	1,925
TOTAL LIABILITIES & NET ASSETS	7,347	7,315