

APPLICATION

Designed for installation on water lines to protect against both backsiphonage and backpressure of polluted water into the water supply. Assembly shall provide protection where a potential health hazard does not exist. (Medium Hazard)

STANDARDS COMPLIANCE (Horizontal & Vertical)

- SAI GLOBAL WATERMARK



WATERMARK
AS/NZS 2845.1
LIC. 1379



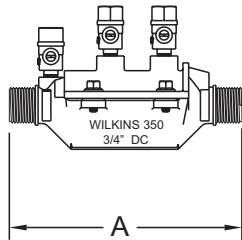
TYPE TESTED
AS/NZS 4020
LIC. 20111

FEATURES

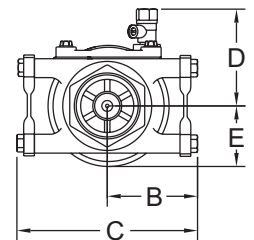
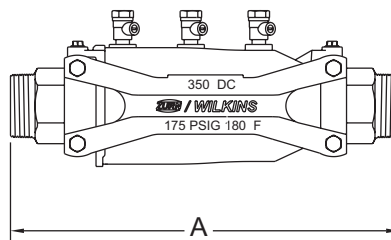
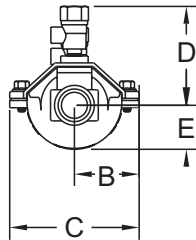
DN: □ 20 □ 25 □ 32 □ 40 □ 50
 Maximum working water pressure 1200 kPa
 Maximum working water temperature 82°C
 Hydrostatic test pressure 2400 kPa
 End connections Threaded BSPTM

MATERIALS

Main valve body Cast Bronze, ASTM B 584 (3/4-1")
 Housing Reinforced Nylon
 Fasteners Stainless Steel, 300 Series
 Elastomers Silicone (FDA Approved)
 Buna Nitrile (FDA Approved)
 Internals Delrin, NSF Listed
 Springs Stainless steel, 300 series
 Tailpiece Cast Bronze, ASTM B 584
 Struts Forged Brass ASTM B 124



(3/4" - 1")



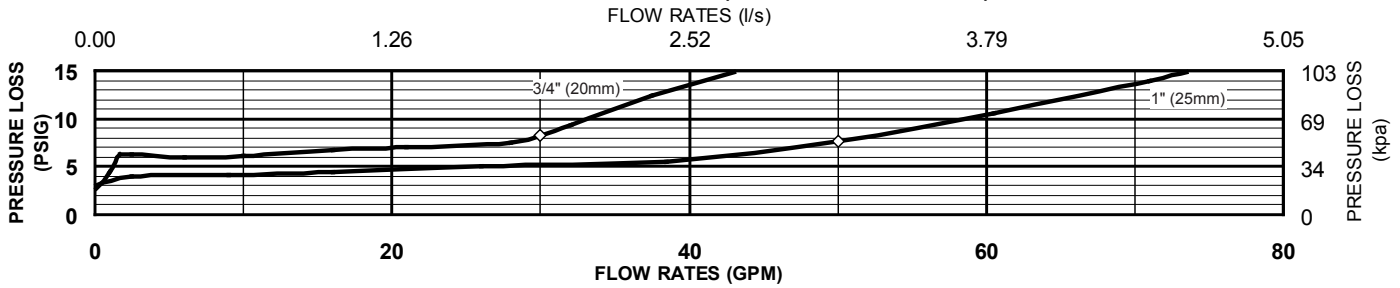
(1-1/4" - 2")

DIMENSIONS & WEIGHTS (do not include pkg.)

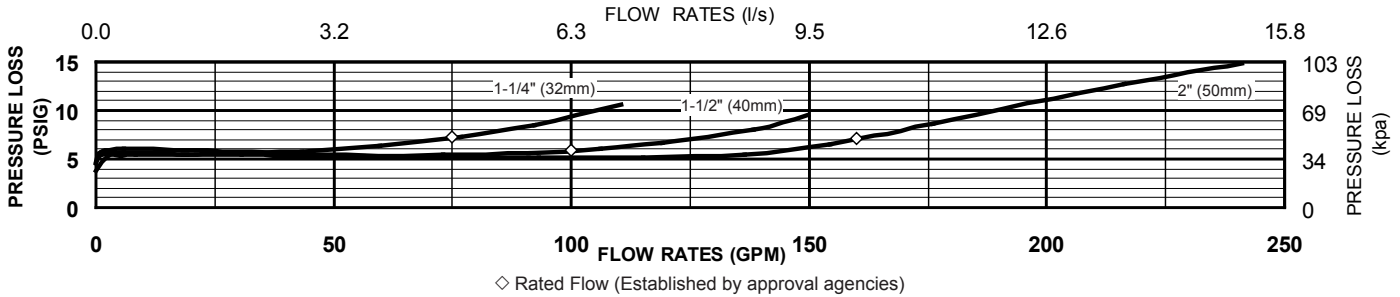
MODEL 350 SIZE		DIMENSIONS (approximate)										WEIGHT	
		A		B		C		D		E			
in.	mm	in.	mm	in.	mm	in.	mm	in.	mm	in.	mm	lbs.	kg
3/4	20	6 5/8	168	1 7/8	48	3 3/4	95	3	76	1 1/4	32	2.3	1.0
1	25	7	178	2 1/16	52	4 1/8	105	3 1/4	83	1 3/4	45	3.0	1.4
1-1/4	32	14 3/8	367	3 1/4	83	3 3/4	95	2 1/4	57	4 1/2	114	17.2	7.8
1-1/2	40	14 3/8	367	3 1/4	83	3 3/4	95	2 1/4	57	4 1/2	114	17	7.7
2	50	14 3/8	367	3 1/4	83	3 3/4	95	2 1/4	57	4 1/2	114	18	8.2

FLOW CHARACTERISTICS

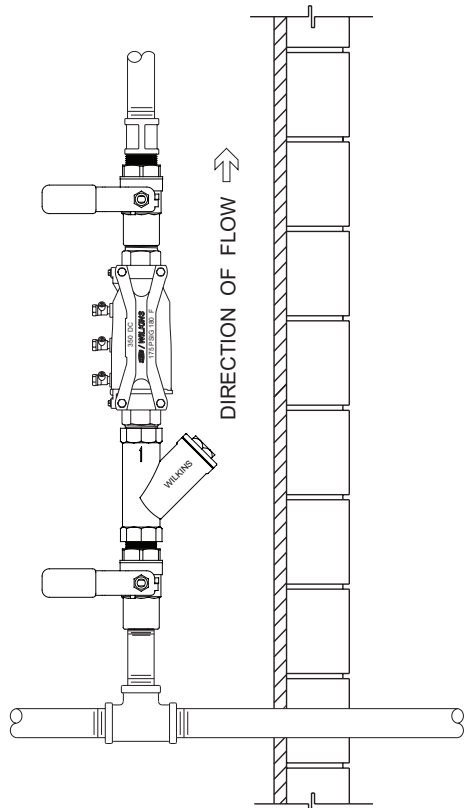
MODEL 350, 350XL 3/4" & 1" (STANDARD & METRIC)



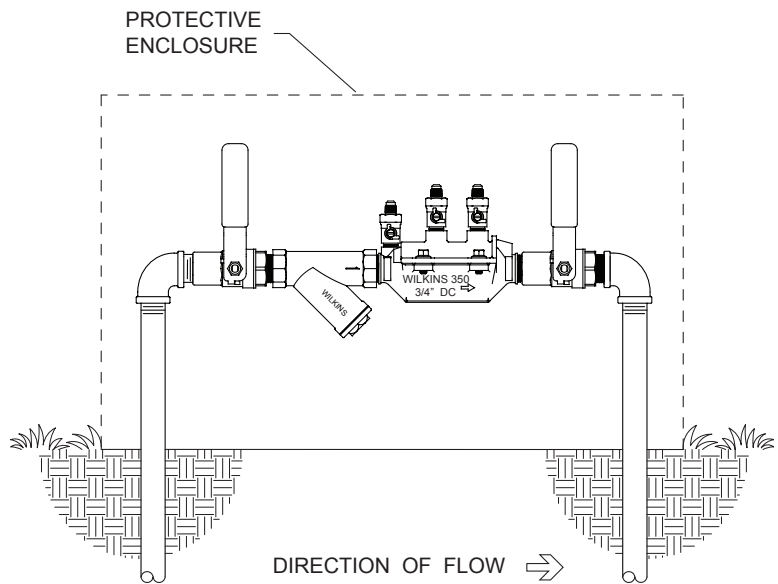
MODEL 350, 350XL 1-1/4", 1-1/2" & 2" (STANDARD & METRIC)



◇ Rated Flow (Established by approval agencies)



INDOOR INSTALLATION



OUTDOOR INSTALLATION

SPECIFICATIONS

The Double Check Valve Backflow Preventer shall be Australian Watermark Approved (AZ/NZS 2845.1), rated to 82°C and supplied with male pipe thread tailpieces. The main body shall be Bronze for sizes 3/4" & 1", and Nylon for sizes 1-1/4" to 2". The housing shall be reinforced Nylon and the seat disc elastomers shall be silicone (FDA Approved). The first and second checks shall be accessible for maintenance without removing the device from the line. The Double Check Valve Backflow Preventer shall be a WILKINS Model 350.