

# ACUFLO<sup>®</sup>

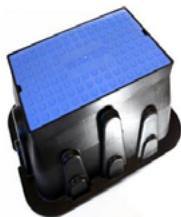
## INDUSTRIES LTD

---

### PRICE LIST

### NOVEMBER 2018

---



PLEASE VISIT OUR WEBSITE FOR THE LATEST UPDATED ACUFLO PRICE LIST



31 REEVE STREET, LEVIN | PHONE 06 368 4996 | FAX 06 367 9201  
PO BOX 660 | SALES@ACUFLO.CO.NZ | WWW.ACUFLO.CO.NZ



## CONDITIONS OF SALE

---

### 1. GST

All prices shown herein are subject to the addition of GOODS AND SERVICES TAX (GST).

### 2. RETURNS/CREDITS/RESTOCKING FEES

All products returned for credit having not been incorrectly supplied nor claimed faulty under warranty are subject to a 10% restocking fee with the products return to our stock, at Acuflo's discretion. Any product specifically assembled or manufactured against a customer order, if returned is additionally subject to all labour costs in the product's assembly and disassembly, being deducted from any credit value. Any product ordered from overseas against a customer's request is strictly non-returnable.

### 3. WARRANTY

The product Manufacturer warrant to the purchaser of their products, for a period of one (1) year from date of original purchase for use, that any defective product proved to be caused by faulty workmanship or faulty materials, when correctly installed and used in a normal manner, will be repaired or replaced at the Manufacturer's factory, or Acuflo Industries Limited, Levin, with transport charges prepaid. This warranty does not apply to damage or malfunction resulting from accidents, damage in transit, misuse or neglect. No allowances will be made for labour, for removal or reinstallation of any so-claimed defective products.

4. All orders supplied against this price list are done so strictly against Acuflo's Terms and Conditions of Trade document sighted and agreed to when opening a credit trading account. Additional copies are available upon request.

*WHILST EVERY EFFORT WILL BE MADE TO MAINTAIN PRICES LISTED HEREIN, CIRCUMSTANCES BEYOND OUR CONTROL MAY REQUIRE AMENDMENTS WITHOUT PRIOR NOTICE.*

# ACUFLO®

## CONTENTS

---

### BOXES 1.0

ACUFLO Mini Toby Box, Lid & Base	1.1
ACUFLO Midi AMB Box Range	1.2
ACUFLO Jumbo & Jumbo Tapered Box Range	1.3
ACUFLO Midi & Jumbo Lids and Bases	1.4
ACUFLO Box Colours, Parts & Accessories	1.5



### MANIFOLDS 2.0

ACUFLO Non Metallic Composite Manifold System	2.1
ACUFLO Non Metallic Composite Manifold Assemblies	2.2
ACUFLO Bronze Manifold System	2.3
ACUFLO Bronze Manifold Assemblies	2.4
ACUFLO Diaphragm Valves & Parts	2.5
ACUFLO Manifold Parts & Tools	2.6



### VALVES 3.0

ACUFLO Rate of Flow Control Valve Range	3.1
Inline Rate of Flow Control Valves	3.2
Pressure Reducing Valves	3.3



# ACUFLO®

## CONTENTS

---

### WATER METERS 4.0

Domestic Inline – Multi jet Type	4.1
Domestic Inline Meters – Piston Type	4.2
Domestic Manifold & Apartment Meters	4.3
Commercial & Bulk Water Meters	4.4
Hot Water Meters	4.5
Water Meter Electronic & Pulse Outputs	4.6
Water Meter Tail Sets, Check Tails & Accessories	4.7



### BACKFLOW PREVENTION 5.0

Dual Check BFP	5.1
ACUFLO Composite Backflow Assemblies	5.2
ACUFLO Bronze Backflow Assemblies	5.3





## IN GROUND BOXES

### CONTENTS

---

Mini Toby Box, Lid & Base	1.1
Midi AMB Box Range	1.2
Jumbo & Jumbo Tapered Box Range	1.3
Midi & Jumbo Lids and Bases	1.4
Box Colours, Parts & Accessories	1.5





## MINI TOBY VALVE BOX RANGE

- Superior Strength Polypropylene
- Large 160mm lid for easy access
- Large stabilising flange for added component security
- Base for firm seating and to avoid debris build up
- Lid has metal detection rods and points in the direction of the service pipe
- Flexible stainless steel cable to secure lid to box

CODE	DESCRIPTION	LIST PRICE
ATC160	"Mini" Toby Box with Blue/ Black Lid 160mm Diameter	14.25
ATC160B	"Mini" Toby Box & Lid in P.E supplied with base	19.95
ATB160	Base only to suit Toby Box (needs 150 PVC connector)	7.20
ATC004UV	Blue Lid for Toby Box with "V"	5.80
ATC004BV	Black Lid for Toby Box with "V"	5.80



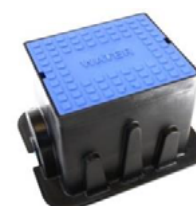
*Lids in a selection of colours and materials available upon customers request. Refer page 1.5*



## MIDI AMB BOX RANGE

- Superior Strength Polypropylene
- Large top & bottom flange for max strength underload
- Stainless flexi cable to secure lid + metal detection rods
- Superior anti-slip pedestrian tread pattern design exceeds AS/NZ 3661:1
- Square corners provides for better compaction and ease of paving
- Extensive optional base range adds strength while securing and protecting components
- Polypropylene lid option strength replaces need for aluminium

CODE	DESCRIPTION	LIST PRICE
AMB200	Midi Short Box with Black/Blue Lid 360 x 255 x 215H	25.00
AMB200C	Midi Short Box with Coloured Lid 360 x 255 x 215H	27.00
AMB300	Midi Medium Box with Black/Blue Lid 360 x 255 x 275H	26.00
AMB300C	Midi Medium Box with Coloured Lid 360 x 255 x 275H	28.00
AMB350	Midi Tall Box with Black/Blue Lid 360 x 255 x 325H	27.00
AMB350C	Midi Tall Box with Coloured Lid 360 x 255 x 325H	29.00
AMB0035	Midi Tall 130mm Riser Box	24.00
AMBT240	Tapered Jumbo Box & Black/Blue Lid 430 x 210 x 200H	26.00
AMBT240C	Tapered Jumbo Box & Colour Lid 430 x 210 x 200H	31.50
AMBT285	Tapered Jumbo Box & Black/Blue Lid 430 x 210 x 290H Base of box 320 x 180mm	27.00
AMBT285C	Tapered Jumbo Box & Colour Lid 430 x 210 x 290H Base of box 320 x 180mm	32.50



*Lids in a selection of colours and materials as well as customised logos and wording available upon customers request. Refer page 1.5*

Dimensions above are internal size in mm with lid fitted. For external sizes refer to Acuflo website.


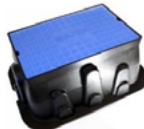



The superior strength of polypropylene allows up to 50% more weight loading of polyethylene for the same deflection and has an immediate recovery rate.

This means polypropylene can be used in areas traditionally suited to metallic product without the expense and theft problems associated with such materials as aluminium, nor the corrosion of galvanized steel lids.



## JUMBO & JUMBO TAPERED BOX RANGE

- Superior Strength Polypropylene Lids
- Large top & bottom flange for max strength underload
- Polypropylene 5 ton load rating replaces heavy iron or high theft aluminium
- Square corners provides for better compaction and ease of paving
- Superior Antislip pedestrian tread pattern design exceeds AS/NZ 3661:1
- Stainless flexi cable to secure lid & metal detection rods
- Extensive optional base range add strength while securing and protecting components

CODE	DESCRIPTION	LIST PRICE	
AMBJ200	Jumbo Box with Black/Blue Lid 520 x 320 x 190H	27.50	
AMBJ200C	Jumbo Box with Coloured Lid 520 x 320 x 190H	32.50	
AMBJ250	Jumbo Box with Black/Blue Lid 560 x 365 x 255H	31.00	
AMBJ250C	Jumbo Box with Coloured Lid 560 x 365 x 255H	36.50	
AMBJ320	Jumbo Box with Black/Blue Lid 560 x 365 x 325H	34.50	
AMBJ320C	Jumbo Box with Coloured Lid 560 x 365 x 325H	39.50	
AMBJD250	Double Jumbo with Base Black/Blue Lid 950 x 365 x 255H	225.00	
AMBJD320	Double Jumbo with Base Black/Blue Lid 950 x 365 x 325H	230.00	
AMBJT250	Triple Jumbo with Base Black/Blue Lid 1425 x 365 x 255H	305.00	
AMBJT320	Triple Jumbo with Base Black/Blue Lid 1425 x 365 x 325H	315.00	

*Lids in a selection of colours and materials as well as customised logos and wording available upon customers request. Refer page 1.5*

Dimensions above are internal size in mm with lid fitted. For external sizes refer to Acuflo website.

The superior strength of polypropylene allows up to 50% more weight loading of polyethylene for the same deflection and has an immediate recovery rate.

This means polypropylene can be used in areas traditionally suited to metallic product without the expense and theft problems associated with such materials as aluminium, nor the corrosion of galvanized steel lids.

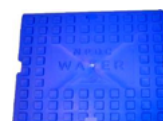
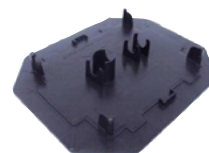




## MIDI & JUMBO LIDS, BASES, ACCESSORIES

- Superior Strength Polypropylene lids
- Polypropylene up to 5 ton load rated with immediate deflection recovery
- Square corners provides for better compaction and ease of paving
- Superior antislip pedestrian tread pattern design exceeds AS/NZ 3661:1
- Metal detection aluminium rods locators on underside of lid
- Patented mounting base to suit valving, manifolds and backflow
- Patented lip seal base design allows independent box & base movement
- Base provides addition box support, controls installation height
- Base provides cleaner box environment reducing risk of service contamination

CODE	DESCRIPTION	LIST PRICE
AMB005W	Flat wide Base for Midi & Tapered Boxes	8.40
AMB006PW	Single Wide Bronze Manifold Base for Midi & Tapered Boxes	8.40
AMB006P	Single Bronze Manifold Base for Midi & Tapered Boxes	8.40
AMB006CM	Single Wide Composite Manifold Base for Midi & Tapered Boxes	8.40
AMB0062P	Dual Bronze Manifold Base for Midi AMB Boxes	9.45
AMBJ006P	Single Bronze Manifold Base for Jumbo Boxes	12.50
AMBJ0062P	Dual Bronze Manifold Base for Jumbo Boxes	12.50
AMBJ0063P	Three Bronze Manifold Base for Jumbo Boxes	12.50
AMBJ005W	Large full coverage Flat Base for Jumbo Boxes	24.50
AMBJ006TR	Special Base for Backflow Manifold GM900STR	24.50
AMB004	Lid to suit Midi AMB200/300/350 Box - Black or Blue	9.50
AMB004C	High Strength Coloured Lid for Midi AMB Boxes	11.35
AMBJ004	Lid to suit Jumbo & Tapered Box range - Black or Blue	17.00
AMBJ004C	High Strength Coloured Lid for Jumbo & Tapered Boxes	22.20



*Lids in a selection of colours and materials as well as customised logos and wording available upon customers request. Refer page 1.5*

The superior strength of polypropylene allows up to 50% more weight loading of polyethylene for the same deflection and has an immediate recovery rate.

This means polypropylene can be used in areas traditionally suited to metallic product without the expense and theft problems associated with such materials as aluminium, nor the corrosion of galvanized steel lids.



## BOX COLOURS, PARTS, ACCESSORIES

The ACUFLO lids are available in an ever-expanding range of colours to suit the service type or to blend in with the environment. Lids can also be made to incorporate corporate logos, council insignias, or wording. As a guide we have listed below some common colours and wording options with ACUFLO's ordering code.

LID WORDING	BLUE	BLACK	WHITE	YELLOW	RED	GREEN
Blank	U	B	W	Y	R	G
Water	UW	BW	WW			GW
Water Meter	UM	BM	WM			GM
Irrigation	UI	BI				GI
Gas		BG	WG	YG	RG	GG
H	UH	BH	WH	YH		
V	UV	BV	WV	YV		GV
SS		BS	WS	YS	RS	GS
FH				YF	RF	
SV	USV	BSV	WSV		RSV	GSV
Survey Mark	USM	BSM	WSM			GSM



## LID SPARE PARTS

CODE	DESCRIPTION	LIST PRICE
AMB008	Stainless steel wire flex for box 0.5m	1.00
AMB009	Aluminium wire collect joiner	0.50
AMB010	Steel rod for box lid location	0.50

# ACUFLO®

## MANIFOLDS

### CONTENTS

ACUFLO Non Metallic Composite Manifold System	2.1
ACUFLO Non Metallic Composite Manifold Assemblies	2.2
ACUFLO Bronze Manifold System	2.3
ACUFLO Bronze Manifold Assemblies	2.4
ACUFLO Diaphragm Valve & Parts	2.5
ACUFLO Manifold Parts and Tools	2.6

The ACUFLO manifold range pioneered the compact, low cost, no-leak water meter supply connection method. When combined with the ACUFLO boxes and mounting bases they provide a fast, low cost, universal installation combining all the items required within a compliant modern water supply connection. Perfected over 25 years of application, regulation and consumer input, the ACUFLO manifolds incorporate a manifold made of long lasting materials, a non-leak, non-jamming isolating valve, and a dual check backflow prevention protected by a cleanable top entry line strainer.

All these standard features also allow a universal co-axial OIMLR49 water meter to be easily fitted by removing the manifold blanking cap.





## ACUFLO COMPOSITE MANIFOLD SYSTEM

- Full composite construction, non-toxic and corrosion free
- Materials approved for potable water AS/NZS4020: WRAS, ACS, KTW, DVGW
- AS/NZS2845 Approved dual check valves
- Integral composite resilient seated valve for smooth on/off operation
- Compact short overall dimensions allows for small low cost installations
- Design allows for integral flow controller and approved dual check
- Strainer filter with top entry for dual check protection
- 20mm BSP inlet and outlet threads
- Low profile design for easy installation
- System provides for retrofitting of OIMLR49 rated manifold water meter
- Every manifold is performance and pressure tested under ACUFLO'S ISO9001/2015 accreditation

CODE	DESCRIPTION	LIST PRICE
CM2000	20mm Composite manifold with integral line filter/strainer, AS/NZS2845 certified inline dual check backflow preventer, integrated upstream composite resilient seated non jam integrated valve	82.50
CM2000620MC	20mm Composite manifold with blanking cap, incorporating top entry line strainer upstream of removable dual check backflow preventer, high quality diaphragm upstream isolating valve. Male BSP threaded, supplied with Sensus composite 620MC meter (brass meter available as an optional extra)	168.50
CM2000 SFC	20mm Composite manifold with blanking cap, upstream of removable dual check backflow tube incorporating top entry line strainer preventer, high quality diaphragm upstream isolating valve. Male BSP threaded. Fitted with stainless steel flow control in place of one check. 0.4—23 LPM	136.00

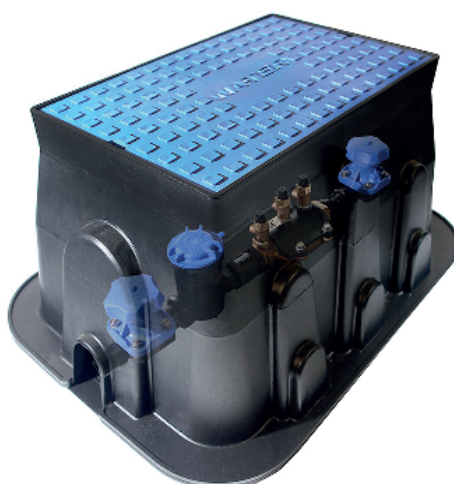




## ACUFLO COMPOSITE MANIFOLD ASSEMBLIES

The ACUFLO factory currently designs and pre assembles manifold combinations to suit customers' requirements under its ISO9001/2015 QA Certification. These manifolds include backflow preventers, water meters etc, within ACUFLO boxes and can be pre mounted on box bases. ACUFLO are happy to discuss your preferred arrangement and quote you competitive pricing for assembly and testing.

CODE	DESCRIPTION	LIST PRICE
CM2000TR	20mm CM2000 fitted with AS/NZS2845 testable double check backflow preventer and downstream isolating valve (dual check removed)	364.00
CM2000620MCTR	20mm CM2000 fitted with AS/NZS2845 testable double check backflow preventer and downstream isolating diaphragm valve (dual check removed). Fitted with Sensus 620MC composite manifold meter (brass meter available as an optional extra)	449.00
CM2000TRFC	20mm CM2000 flow control manifold with AS/NZS2845 testable double check backflow preventer and downstream isolating valve (dual check removed). With the addition of a large capacity fine stainless steel protection filter, with stainless steel 316 flow controller 0.4—23L/M	438.00
AMBJ006TR	Mounting base to locate and protect manifold assemblies within box and hold during testing	24.50
AMBJ320	Jumbo box with black or blue lid to fit and protect manifold assemblies	34.50





## ACUFLO BRONZE MANIFOLD SYSTEM

- Heavy duty brass construction
- Dezincification resistant copper alloy
- Replaceable top entry low cost dual check modules as per AS/NZ2845
- Diaphragm "Saunders" type valve with dry stem assembly
- Compact short overall dimensions allows for small lower cost installations
- Low pressure loss single body design means uniformity, no potential for external leaks
- Maric rate of flow controllers in stainless steel for cavitation resistance
- Standard with pipe strainer filter to protect dual check & meter
- Removable blank cap to fit water meter with no additional installation costs
- System provides for retrofitting of OIMLR49 rated universal water meter
- Every manifold is performance and pressure tested under ACUFLO'S ISO 9001/2015 accreditation

CODE	DESCRIPTION	LIST PRICE
GM900S	20mm Gunmetal manifold with blanking cap, incorporating top entry line strainer upstream of removable dual check backflow preventer, high quality diaphragm upstream isolating valve. Female BSP threaded.	121.00
GM900S25	25mm Gunmetal manifold with blanking cap, incorporating top entry line strainer upstream of removable dual check backflow preventer, high quality diaphragm upstream isolating valve. Male BSP threaded.	133.00
GM900S620M	20mm Gunmetal manifold with blanking cap, incorporating top entry line strainer upstream of removable dual check backflow preventer, high quality diaphragm upstream isolating valve. Female BSP threaded, supplied with Sensus composite 620MC meter (brass meter available as an optional extra)	207.00
GM900SSFC	20mm Gunmetal manifold with blanking cap, incorporating top entry line strainer upstream of removable dual check backflow preventer, high quality diaphragm upstream isolating valve. Female BSP threaded. Fitted with stainless steel flow control in place of one check. 0.4—23 LPM	174.50



*Refer Page 1.2, 1.3 and 1.4 for ACUFLO'S manifold boxes and bases.*

*Refer Page 4.3 for manifold meters.*



## ACUFLO BRONZE MANIFOLD ASSEMBLIES

The ACUFLO factory currently designs and pre assembles manifold combinations to suit customers' requirements under its ISO9001/2015 QA Certification. These manifolds include backflow preventers, water meters etc, within ACUFLO boxes and can be pre mounted on box bases. ACUFLO are happy to discuss your preferred arrangement and quote you competitive pricing for assembly and testing.

CODE	DESCRIPTION	LIST PRICE
GM900STR	20mm GM900S fitted with AS/NZS2845 testable double check backflow preventer and downstream isolating valve (dual check removed)	402.00
GM900S620MCTR	20mm GM900S fitted with AS/NZS2845 testable double check backflow preventer and downstream isolating diaphragm valve (dual check removed). Fitted with Sensus 620MC composite manifold meter (brass meter available as an optional extra)	560.00
FFC900STR	20mm gunmetal manifold with blanking cap, top entry strainer AS/NZS2845 testable double check backflow preventer, high quality diaphragm upstream isolating valve, 20mm female BSP threaded. Fitted with stainless steel flow control 0.4—23 LPM	478.50
GM900SFFCK	20mm gunmetal manifold with blanking cap, incorporating top entry line strainer upstream of removable dual check backflow preventer, high quality diaphragm upstream isolating valve for mains household supply, plus separate downstream connection with flow control for rain water make up tank	334.00
AMBJ006TR	Mounting base to locate and protect manifold assemblies within box and hold during testing	24.50
AMBJ320	Jumbo box with black on blue lid to fit and protect manifold assemblies	24.50







## DIAPHRAGM VALVES AND PARTS

- Heavy duty DR brass construction
- Extremely low head loss
- 1600kpa Working pressure, individually tested to 2000kpa
- “Dry” actuator and spindle avoids mud affecting handle operation
- Strong composite actuator and large handle
- Slow on/off avoids hammer and allows good regulating position
- Eliminate potential for expensive leaks from valve stem seals

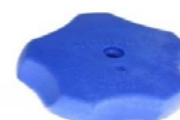
### DIAPHRAGM VALVES

CODE	DESCRIPTION	LIST PRICE
DVC25012	15mm Composite Males BSP, Standard in Waterworks Blue	36.00
DVC25020	20mm Composite Males BSP, Standard in Waterworks Blue	36.00
DV25015	15mm Gunmetal Female BSP, Standard in Waterworks Blue	45.50
DV25020	20mm Gunmetal Female BSP, Standard in Waterworks Blue	45.50
DV25025	25mm Gunmetal Female BSP, Standard in Waterworks Blue	51.00



### VALVE PARTS

DV100	Diaphragm Valve Top Assembly (Blue)	26.25
DV002	Handle for Diaphragm Valve	5.00
DV002MKI	Strengthened handle for MKI manifold	5.75
GM002	Stainless Steel Studs for Valve	0.85
GM003	Stainless Steel Washer for Valve assembly—nut	0.25
GM004	Stainless Steel Nut for Valve assembly—stud	0.45



*For all individual parts and a parts drawing for the DV250 valve please contact the factory.*





## ACUFLO MANIFOLD PARTS AND TOOLS

CODE	DESCRIPTION	LIST PRICE
DC100	Dual check valve module—screw in, fits type MKII & CM2000	21.50
DC200	Dual check valve module—old push in fit type MKI (1980/90's)	21.50
GM008S	Small plastic filter element for water meters	2.00
FC400SS	Stainless steel flow controller only to fit Acuflo manifold	58.00
DC100/FC400SS	Screw In module with stainless flow control and check valve	70.00
GM006	ACUFLO Composite manifold blanking cap plug	11.50
OR002	ACUFLO Cap plug O ring	0.50



## TOOLS

TBC100	Bank cap removal tool	36.00
TCV100L	Screw-in dual check valve tool 450mm long	36.00
TS100	Screw-in strainer tubular tool	10.75



# PRESSURE REDUCING VALVES AND FLOW CONTROL VALVES

## CONTENTS

---

ACUFLO Flow Control Valve Range	3.1
Inline Rate of flow Control Valves	3.2
Pressure Reducing Valves	3.3

ACUFLO'S diaphragm valves are widely accepted as today's water works Toby valve of choice. Based on the proven Saunders diaphragm valve principle ACUFLO has now sold over 300,000 valves in NZ. ACUFLO'S rate of flow control valve range has been extended into a full range of flows and pipe diameters.

To complete the range ACUFLO has now added bronze pressure regulators for domestic, commercial and industrial water supply pressure control applications.





## INLINE FLOW CONTROL VALVE RANGE

ACUFLO rate of flow control units are field proved over 25 years and are used to balance demand with supply for improved water network management.

- **Now with Grivory Composite Body and Cap Material**
- Specifically developed to suit raw water rural supplies
- Maximum rate of flow limited irrespective of fluctuating supply pressure
- Balances pipe networks supply capability with consumer demand
- Improved consumer confidence through constant water supply
- Filter protection factory set for flow controller protection
- In field testable option available
- Flow controllers from 0.4 up to 5500 litres per minute
- Inline body with BSP end connections

CODE	DESCRIPTION	LIST PRICE
CFC50020	20mm Composite body with large capacity top entry stainless steel mesh filter element and stainless steel flow controller, fitted with single check valve. Male BSP threaded.	103.00
CM2000SFC	20mm Composite manifold with blanking cap, upstream of removable dual check backflow tube incorporating top entry line strainer preventer, high quality diaphragm upstream isolating valve. Male BSP threaded. Fitted with stainless steel flow control in place of one check. 0.4—23 LPM	136.00
GM900SSFC	20mm Gunmetal manifold with blanking cap, incorporating top entry line strainer upstream of removable dual check backflow preventer, high quality diaphragm upstream isolating valve. Male BSP threaded. Fitted with stainless steel low control in place of one check. 0.4—23 LPM	174.00





## INLINE RATE OF FLOW CONTROL VALVES

CODE	DESCRIPTION	LIST PRICE
FFC200	Optional flow test tee assemble with bypass test point valve and non-return. Additional cost to above.	38.00
FC400SS	Stainless steel flow controller insert for Acuflo manifold 0.4—23.0 LPM	57.50
FCBF/M015	15mm BSP threaded flow controller brass 0.4—23.0 LPM	67.00
FCBF/F020	20mm BSP threaded flow controller brass 8.0—54.0 LPM	112.00
FCBF/F025	25mm BSP threaded flow controller brass 23.0—114.0 LPM	199.00



*For flow controllers incorporated within ACUFLO'S manifold assemblies refer pages 2.1, 2.2, 2.3, 2.4 and 3.1 of this price list*  
*For large flow control up to 5833 LPM please contact ACUFLO*



## PRESSURE REDUCING VALVES

With over 40 million units sold worldwide, Zurn Wilkins is a leading US manufacturer of valves and hardware and ACUFLO have carefully selected the NR3 range to provide to our customers.

- Integral Stainless Steel Mesh Strainer
- Sturdy Bronze body with 2700kPa working Pressure Rating
- 15, 20 & 25mm Adjustable outlet pressure from 100kPa to 510kpa
- 32, 40 & 50mm Adjustable outlet pressure from 170kPa to 510kpa
- Replaceable internal cartridge without need to remove body from pipeline
- Built in thermal expansion bypass
- Balanced diaphragm cartridge design for superior stability
- Short length and installation in any position makes retro fitting easy

CODE	DESCRIPTION	LIST PRICE
NR3015	15mm Pressure Reducing Valve NR3 Female BSP Threaded	69.00
NR3020	20mm Pressure Reducing Valve NR3 Female BSP Threaded	69.00
NR3025	25mm Pressure Reducing Valve NR3 Female BSP Threaded	184.00
NR3032	32mm Pressure Reducing Valve NR3 Female BSP Threaded	335.00
NR3040	40mm Pressure Reducing Valve NR3 Female BSP Threaded	420.00
NR3050	50mm Pressure Reducing Valve NR3 Female BSP Threaded	645.00



*For other models, larger sizes and/or pilot operated diaphragm control valves please contact factory*



## WATER METERS

ALL EUROPEAN DESIGNED, MANUFACTURED, ASSEMBLED AND CERTIFIED

### CONTENTS

Domestic Inline Meters - Multi Jet Type	4.1
Domestic Inline Meters - Piston Type	4.2
Domestic Manifold and Apartment Meters	4.3
Commercial & Bulk Large Meters	4.4
Hot Water Meters	4.5
Water Meter Electronics & Pulse Outputs	4.6
Water Meter Tail Sets, Check Tails & Accessories	4.7

ACUFLO'S Factory is fully compliant and certified to ISO 9001/2015 including design and manufacture. We have been designing and manufacturing water meters in our enterprise award-winning factory for the past 15 years with each water meter individually tested and certificated to ISO4064 standards.

With NZ adopting the new OIML R49 meter standards, ACUFLO has used its metering expertise and reputation to source the worlds leading brands. We have specified the meters to ensure they comply with the 2003 NZ water meter code of practice. For the first time these leading world brands are available from a single independent source to ensure you are provided with the correct meter for the correct application.





## DOMESTIC INLINE METERS - MULTI JET TYPE

- Meters compliant to OIML R49 Class2 performance
- Meter all to standard NZ meter lengths as specified in NZ Code of Practice
- Meter registers are electronic pulse output capable for remote reading
- Meter pricing includes nuts, tails and washers
- Meters are 16 bar working pressure rated
- Each meter is individually tested and Certified to OIML R49 Class 2
- Europe's leading Kent, Sensus, and Maddalena brands

Maddalena DS TRP. Class C meter with twin pulse output socket for 1P/1L, oil filled protected totaliser, Sapphire & Stainless bearing for operation in rural/raw water or potable grade city water.

CODE	DESCRIPTION	LIST PRICE
DSTRP15	15mm ACUFLO DS TRP Meter Q3 2.5 Class C	112.00
DSTRP20	20mm ACUFLO DS TRP Meter Q3 4.0 Class C	130.00
DSTRP25	25mm ACUFLO DS TRP Meter Q3 6.3 Class C	315.00
DSTRP32	32mm ACUFLO DS TRP Meter Q3 10.0 Class C	448.00
DSTRP40	40mm ACUFLO DS TRP Meter Q3 16.0 Class C	605.00
DSTRP50	50mm ACUFLO DS TRP Meter Q3 25.0 Class C	725.00



*For Kent and Sensus domestic meters refer page 4.2 and 4.3*



## DOMESTIC INLINE METERS - PISTON TYPE

Sensus 620PR Class C meter with HRI induction pulse for total pulse integrity and selectable pulse value. Copper/Glass super dry canned register as used on bulk commercial meters for ultimate totalizer protection. Balanced piston for quiet operation and 50% extended life. Patented internal materials SGI weightless in water provides industries best metering performance. Operation suited to potable water. The worlds best domestic meter technology, proven over 30 years in NZ.

CODE	DESCRIPTION	LIST PRICE
22015C	15mm ACUFLO 220 Composite Piston Meter Class C (134mm)	73.00
620015C	15mm ACUFLO 620 Composite Piston Meter Class C & D (134mm)	105.00
620020C	20mm ACUFLO 620 Composite Piston Meter Class C & D (165mm)	118.00
620025C	25mm ACUFLO 620 Composite Piston Meter Class C & D (198mm)	292.00
620015	15mm ACUFLO 620 Piston meter Qn 1.5 Class C & D (134mm)	135.00
620020	20mm ACUFLO 620 Piston meter Qn 2.5 Class C & D (165mm)	145.00
620025S	25mm ACUFLO 620 Piston meter Qn 3.5 Class C (198mm)	330.00
620025	25mm ACUFLO 620 Piston meter Qn 6.0 Class C (260mm)	400.00
620030	32mm ACUFLO 620 Piston meter Qn 6.0 Class C (300mm)	540.00
620040	40mm ACUFLO 620 Piston meter Qn 10 Class C (300mm)	740.00
620040F	40mm ACUFLO 620 Piston meter 300/311mm Flange	1015.50

Elster Kent PSM-T Class C meter design with single read pulse probe output capability is a traditional robust meter. Oil filled protected totaliser.

PSM015	15mm ACUFLO V101 Meter Qn 1.5 Class C	165.00
PSM020	20mm ACUFLO V101 Meter Qn 2.5 Class C	176.00
PSM025	25mm ACUFLO V101 Meter Qn 3.5 Class C	450.00
PSM032	32mm ACUFLO V101 Meter Qn 6 Class C	655.00
PSM040	40mm ACUFLO V101 Meter Qn 10 Class C	945.00

*For pulse outputs and Automatic reading equipment please refer page 4.6*

The NZ water meter Code of Practice has specified the following meter body lengths to ensure compatibility with existing and future meter installations and replacements.

NZ Code NB = Body Length	Meter DSTRP	Model 520PR	Compliance 620 PR	V101 PSM-T
15-134mm	✓	✓	✓	✓
20-165mm	✓	✓	✓	✓
25-260mm	✓	✓	✓	x
32-260mm	✓	✓	✓	✓
40-360mm	✓	✓	✓	✓





## DOMESTIC MANIFOLD & APARTMENT METERS

ACUFLO pioneered water connection manifolds in NZ and over the last 20 years have perfected the system to suit all connection requirements. In addition to ACUFLO'S own manifold meter developed for raw water used in rural supplies, ACUFLO has now completed its range of concentric manifold meters by offering the world's best potable water supply rotary piston manifold meters to satisfy all our customers' meter preferences.

### MANIFOLD METERS TO OIML R49

SPECIFICATION COMPLIANT WITH 2017 NZ WATER METER GOOD PRACTICE GUIDE

CODE	DESCRIPTION	LIST PRICE
620MC	Sensus 620 Composite Precision Piston Manifold Meter, Copper/ Glass register Qn 2.5	87.00
620M-B	Sensus 620-M Precision Piston Manifold Meter, Brass body, copper/ glass register Qn 2.5	129.00
MSM-T	Elster/Kent V210 Mini piston manifolds meter Qn 1.5	151.00
MSM	Elster/Kent Approved standard manifold meter Qn 2.5	179.00



### APARTMENT METERS

These single jet meters have pulse output for remote reading capability. ACUFLO has selected the best apartment meter from Europe; ISO4064 Class C Certified complete with oil filled protected register with lid and small overall dimension to ease installation. These single jet meters are designed as check meters for multi user supplies and verification of water supplier's meter allocation.

CODE	DESCRIPTION	LIST PRICE
CDSD15HT	15mm Inside Apartment Meter Hot 90°C, pulse capability with tails <b>INDOORS ONLY</b>	57.00
CDSD20HT	20mm Inside Apartment Meter Hot 90°C, pulse capability with tails <b>INDOORS ONLY</b>	61.00
CDONE15T	15mm Cold Water Class C meter with tails, body length 110mm	74.00
CDONE20T	20mm Cold Water Class C meter with tails, body length 130mm	78.00



*For pulse outputs and automatic meter ready equipment please refer to page 4.6*

# ACUFLO®

## COMMERCIAL & BULK WATER METERS

ACUFLO have selected the best Helix Woltmann water meters from the world's largest German manufacturers. These meters are NZ field proven and designed to provide for re certification with pre calibrated internals. All meters provide the following features.

- Comply with ISO4064 class B, OIML R49 Class 2 standards
- Standardised ISO/OIML body lengths for interchange ability in the field
- Copper/Glass moisture proof registers with totalisers and flow rate dial
- Two reed pulse output and one opto pulser output
- Precalibrated replaceable internals for NZ Meter Code 6 year re certification
- Best of the world brands, Sensus, Meinecke, Kent, Maddalena
- Flanged 16 bar rated with AS/NZS 4807 table D flanges
- Meistream Plus now world first Class C bulk meter performance option

Brand Model	Nominal Bore Size				List Price		
	50mm	80mm	100mm	150mm	200mm	250mm	300mm
Sensus WPD	640.00	875.00	1085.00	1625.00	2245.00	3540.00	4590.00
Meistream Plus	1060.00	1550.00	1820.00	2385.00	NA	NA	NA
Meitwin	2495.00	3825.00	4185.00	6500.00	-	-	-

## COMMERCIAL METER PROTECTION STRAINERS

NMI Approved, AS/NZS 4020 flanged, enamel coated, top entry, stainless internal trim, 1600 Kpo

CODE	DESCRIPTION	LIST PRICE
WPDF050	50mm Low head loss easy clean strainer	295.00
WPDF065	65mm Low head loss easy clean strainer	350.00
WPDF080	80mm Low head loss easy clean strainer	415.00
WPDF100	100mm Low head loss easy clean strainer	445.00
WPDF150	150mm Low head loss easy clean strainer	765.00
WPDF200	200mm Low head loss easy clean strainer	985.00

*For reed and opto pulsers for these meters refer page 4.6*



**SENSUS MEISTREAM**



**SENSUS WPD**



**COMMERCIAL STRAINER**



**MEITWIN**



## WATER METERS

(FOR APARTMENTS AND INDUSTRY)

- European designed, manufactured, assembled and tested
- Certified to OIMLR49 and individually tested and approved
- Electronic pulse output capability on all meters
- Protected registers avoids condensation in hot moist environments
- Materials and coating used to avoid corrosion problems associated with hot water

CODE	DESCRIPTION	LIST PRICE
CDSD15HT	15mm Inside Apartment Meter Hot 90°C, pulse capability with tails <b>INDOORS ONLY</b>	57.00
CDSD20HT	20mm Inside Apartment Meter Hot 90°C, pulse capability with tails <b>INDOORS ONLY</b>	61.00
DSTRP25H	25mm Hot Water Meter 90°C, with pulse capability and tails	395.00
DSTRP32H	32mm Hot Water Meter 90°C, with pulse capability and tails	556.00
DSTRP40H	40mm Hot Water Meter 90°C, with pulse capability and tails	752.00
WPDH050	50mm Hot Water Meter 130°C, with pulse + opto options, flanged	1,655.00
WPDH080	80mm Hot Water Meter 130°C, with pulse + opto options, flanged	1,790.00
WPDH100	100mm Hot Water Meter 130°C, with pulse + opto options, flanged	1,945.00
WPDH150	150mm Hot Water Meter 130°C, with pulse + opto options, flanged	4,825.00



*Larger sizes available from Europe - please contact factory for pricing  
For reed pulsers, opto pulsers and accessories refer page 4.6*



## WATER METER ELECTRONICS AND PULSE OUTPUTS

### PULSE OUTPUTS FOR DOMESTIC METERS

CODE	DESCRIPTION	LIST PRICE
RSSD	Reed Pulser for CDSD model 1P/10L	24.00
RSDS	Reed Pulser for DSTRP model 1P/1L	77.00
RSCD	Reed Pulser for CD ONE model 1P/1L	63.00
HRI	Induction Pulser for Sensus Piston 620 models 1P/1L	180.00
PSM-T	Reed Pulse Probe for Kent PSM-T Inline meters 1P/1L	64.00
MSM-T	Reed Pulse Probe for Kent MSM-T and KVM models 1P/1L	64.00

### PULSE AND OPTO OUTPUTS FOR LARGE METERS

RR570	Reed Pulser for Helix 4000 and Datawater models (Kent PG100)	274.00
RD01	Reed Pulser for Sensus Dynamic WPD and Meitwin	96.00
RD02	Reed Pulser for Hot Water WPDH meters 130°C	217.00
RO571	Optical Pulser for Helix 4000 and Datawater models (Kent BPG20)	768.00
OptoD01	Optical High Resolution Pulser for Sensus Cold meters	475.00
OptoD02	Optical High Resolution Pulser for Sensus Hot water meters	594.00
OptoD06	Optical High Resolution Pulser 4wire for Sensus Hot/Cold meters	684.00
MEI40	Induction Pulser for Sensus Meistream meters	260.00

### METER INSTRUMENTS AND ACCESSORIES

H7EC-BLM	Omron resetable remote totaliser	230.00
FM1-1DK	Frequency converter, rate of flow display and 4-20 Ma	1,610.00

*ACUFLO has supervised, commissioned and supplied the installation of complete remote reading systems for water meters in NZ. ACUFLO are able to assist with the application of this technology – Please contact the factory.*



## WATER METER TAIL SETS, CHECK TAILS & ACCESSORIES

### METER NUTS AND TAILS

CODE	DESCRIPTION	LIST PRICE
AMT2015	Brass Nut & Tail to suit 15mm Meter (one of each)	5.85
AMT2020	Brass Nut & Tail to suit 20mm Meter (one of each)	10.90
AMT2025	Brass Nut & Tail to suit 25mm Meter (one of each)	19.00
AMT2032	Brass Nut & Tail to suit 32mm Meter (one of each)	24.50
AMT2040	Brass Nut & Tail to suit 40mm Meter (one of each)	26.50
AMT2050	Brass Nut & Tail to suit 50mm Meter (one of each)	65.00



### METER TAIL WITH CHECK VALVE

AMCT2015	Brass Nut & Check Tail to suit 15mm Meter	22.00
AMCT2020	Brass Nut & Check Tail to suit 20mm Meter	31.00
AMCT2025	Brass Nut & Check Tail to suit 25mm Meter	38.50



### FIBRE WASHERS TO SUIT METER AND TAIL SETS

MINIMUM OF \$10.00 PER PURCHASE FOR WASHERS

W15	Fibre Washer to suit 15mm Meter	0.25
W20	Fibre Washer to suit 20mm Meter	0.35
W25	Fibre Washer to suit 25mm Meter	0.38
W32	Fibre Washer to suit 32mm Meter	0.50
W40	Fibre Washer to suit 40mm Meter	0.90
W50	Fibre Washer to suit 50mm Meter	3.00





## BACKFLOW PREVENTERS

### CONTENTS

---

Dual Check BFP & Brass Y Strainers	5.1
ACUFLO Composite Backflow Assemblies	5.2
ACUFLO Bronze Backflow Assemblies	5.3

ACUFLO proudly provide the range of dual check backflow preventers with Wilkins of the USA. These backflow preventers are approved to ASNZ2845; comply with G12 and the NZ Backflow prevention for drinking water supply code of practice.





## DUAL CHECK BFP

(NON-TESTABLE)

DUAL CHECK (DC) DEVICES ARE AS/NZ2845, ASSE, & NZ BFP CODE OF PRACTICE COMPLIANT

CODE	DESCRIPTION	LIST PRICE
DC2000	20mm Inline Lead Free Composite Dual Check and Stainless Steel integral large capacity top entry Y type	39.50
DC700/15	Inline DR brass dual check 15mm meter nut inlet, 20mm female outlet	38.00
DC700/20	Inline DR brass dual check 20mm female union inlet, 20mm female outlet	71.00
DC700/25	Inline DR brass dual check 25mm female union inlet, 25mm female outlet	82.00
DC100	Screw in composite dual check module to suit GM900S/CM2000	21.50
DC200	Push in composite dual check module to suit old type MKI GM900 manifold	21.50



## Y STRAINERS

WATERMARK 22362, AS/NZS 4020

DR BRASS BODY Y PATTERN TYPE PIPELINE STRAINER WITH STAINLESS STEEL SCREEN

CODE	DESCRIPTION	LIST PRICE
YSBR015	15mm 20mesh female BSP Y strainer water 1600Kpa	11.45
YSBR020	20mm 20mesh female BSP Y strainer water 1600Kpa	16.80
YSBR025	25mm 20mesh female BSP Y strainer water 1600Kpa	27.50
YSBR032	32mm 20mesh female BSP Y strainer water 1600Kpa	49.00
YSBR040	40mm 20mesh female BSP Y strainer water 1600Kpa	64.00
YSBR050	50mm 20mesh female BSP Y strainer water 1600Kpa	90.00

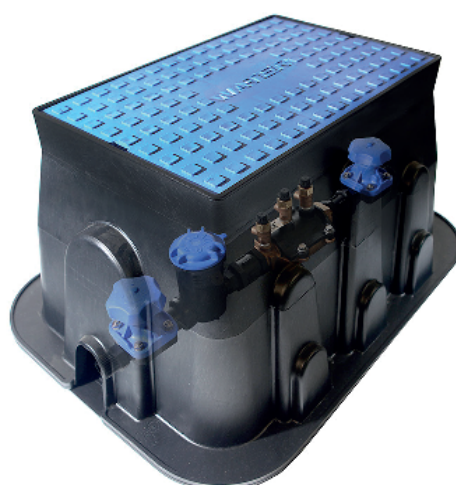




## ACUFLO COMPOSITE BACKFLOW ASSEMBLIES

The ACUFLO factory currently designs and pre assembles manifold combinations to suit customers' requirements under its ISO9001/2015 QA Certification. These manifolds include backflow preventers, water meters etc, within ACUFLO boxes and can be pre mounted on box bases. ACUFLO are happy to discuss your preferred arrangement and quote you competitive pricing for assembly and testing.

CODE	DESCRIPTION	LIST PRICE
CM2000TR	20mm CM2000 fitted with AS/NZS2845 testable double check backflow preventer and downstream isolating valve (dual check removed)	361.00
CM2000620MCTR	20mm CM2000 fitted with AS/NZS2845 testable double check backflow preventer and downstream isolating diaphragm valve (dual check removed). Fitted with Sensus 620MC composite manifold meter (brass meter available as an optional extra)	449.00
CM2000TRFC	20mm CM2000 flow control manifold with AS/NZS2845 testable double check backflow preventer and downstream isolating valve (dual check removed). With the addition of a large capacity fine stainless steel protection filter, with stainless steel 316 flow controller 0.4—23L/M	435.00
AMBJ006TR	Mounting base to locate and protect above assemblies within box and during testing	24.50
AMBJ320	Jumbo box with black or blue lid to fit and protect backflow assemblies	34.50







## ACUFLO BRONZE BACKFLOW ASSEMBLIES

The ACUFLO factory currently designs and pre assembles manifold combinations to suit customers' requirements under its ISO9001/2000 QA Certification. These manifolds include backflow preventers, water meters etc, within ACUFLO boxes and can be pre mounted on box bases. ACUFLO are happy to discuss your preferred arrangement and quote you competitive pricing for assembly and testing.

CODE	DESCRIPTION	LIST PRICE
GM900STR	20mm GM900S fitted with AS/NZS2845 testable double check backflow preventer and downstream isolating valve (dual check removed)	398.00
GM900S620MCTR	20mm GM900S fitted with AS/NZS2845 testable double check backflow preventer and downstream isolating diaphragm valve (dual check removed). Fitted with Sensus 620MC composite manifold meter (brass meter available as an optional extra)	560.00
FFC900STR	20mm gunmetal manifold with blanking cap, top entry strainer AS/NZS2845 testable double check backflow preventer, high quality diaphragm upstream isolating valve, 20mm female BSP threaded. Fitted with stainless steel flow control 0.4—23 LPM	472.00
AMBJ006TR	Mounting base to locate and protect above assemblies within box and during testing	24.50
AMBJ320	Jumbo box with black or blue lid to fit and protect backflow assemblies	34.50

