

# The Parkinson Accounting Systems **PASSAGE**

Spring 2011  
Volume I, Issue V



**A Newsletter for Clients of Parkinson Accounting Systems**

## CONTACT PAS

**Jon Parkinson**  
Owner, CMA  
Tel: 415-499-9959 x101  
E-mail: jon@pas90.com

**Kurt Kunselman**  
Senior Consultant  
Tel: 415-499-9959 x102  
E-mail: kurt@pas90.com

**Nancy Matranga**  
Support Manager  
Tel: 415-499-9959 x105  
E-mail: nancy@pas90.com

**Aaron Edwards**  
Programming  
Tel: 415-499-9959 x107  
E-mail: aaron@pas90.com

**Tracy Kretz**  
Administration  
Tel: 415-499-9959 x104  
E-mail: tracy@pas90.com

### Know Anyone Who Could Use Our Assistance?

We can offer interested parties a chance to learn more about what MAS 90, MAS 200, and Syspro can do to support their business needs.

 Jon Parkinson

 PASystems90

 PAS Client Group

 www.pas90.com



## IN THIS ISSUE

“REAL TIME BARCODE SYSTEM” . . . . . Pg. 2-3  
by Jon Parkinson

“SALES TAX AUTOMATION / REPORTING” Pg. 4-5  
by Kurt Kunselman

“PRODUCT UPDATES” . . . . . Pg. 6-7  
by Nancy Matranga



## welcome *New Clients!*

**Caito Fisheries, Fort Bragg, CA**

**Feiner Financial, Inc., Oakland, CA**

**Muegge Baldi Hardcastle, Santa Rosa, CA**

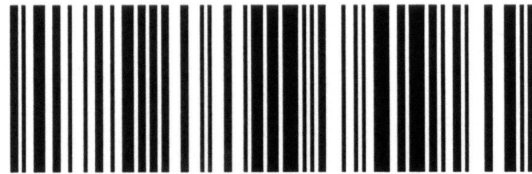
# REAL TIME **BAR CODE** SYSTEM

**For MAS 90 / 200 Version 4.40**

*By Jon Parkinson, Owner and CMA*



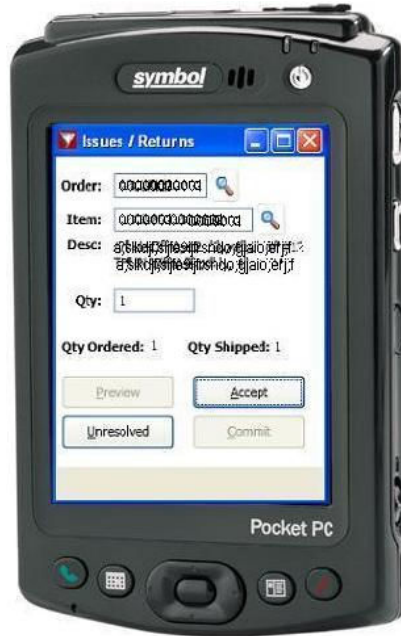
The PAS Bar Code System allows remote handheld barcode devices to ship items against sales orders, process customer returns, receive purchase order items, print inventory labels, process physical counts, and more. Updates occur immediately, resulting in real time inventory numbers in the MAS system.



Leveraging the business objects interface, the system does not modify the source code of MAS 90/200 at all. This gives users peace of mind when other master developer modifications have been installed, or when installing Sage service updates.

The system operates as a miniature MAS 90 system that writes appropriate data directly into SO Invoice Data Entry or PO Receipt of Goods Entry. Order and item number information may be entered by scanning the appropriate bar code.

Data is written directly into MAS, and the Commit button processes invoice printing and updating. Users may use customized invoice forms just as in normal MAS processing.



See how easy adding Bar Code to your MAS system can be.  
Contact Jon Parkinson  
415-499-9959 for more details.

# SALES TAX AUTOMATION AND SALES TAX REPORTING

*By Kurt Kunselman, Senior Consultant and MBA*



## ***Product: AvaTax (by Avalara)***

### **Background:**

Seattle-based software developer, Avalara, is the pioneer in the automation and outsourcing of transactional tax calculation and compliance. The company has over 10,000 businesses worldwide that depend on Avalara's sales tax solutions. The product name that we are focusing on in this article is known as AvaTax.

If you have to calculate and report sales tax for your company, then you know the pains involved if you don't have the AvaTax solution. Changes in local, county and city tax rates have to be manually updated in your current ERP system.

AvaTax is a cloud-based service that connects to your ERP system. The AvaTax database is constantly updated with any local, county and state tax changes based upon Zip Code. The reason zip code is so critical, is that many times companies will change zip codes, but you may not know to change their existing tax schedule in your ERP software.

### **AvaTax works with:**

- Your current ERP systems (Sage MAS and SYSPRO)
- Your current retail POS system
- Your current e-commerce solution

Every time that you enter a new Sales Order, the AvaTax service checks the database against the zip code and automatically enters the correct sales tax rate.

Sales tax reporting can be an overwhelming task for any accounting and finance department employee. Employees delegated with this daunting task are held responsible for correct calculations and meeting the deadlines imposed by states and counties. AvaTax automates the filing of your sales tax reporting requirements. Not only for the current state you are in, but ALL states that you must file sales tax forms and payments.

### **Advantages to AvaTax:**

- Reduce your sales tax audit risk
- Simple and automated rate calculation during data entry at the point of the transaction
- Management of exemption certificates
- Filing of sales tax forms and payment
- Current up-to-date tax rules and regulations

### **Protection from government agencies -**

Due to economic instability in the federal, state and local governments; more companies are being audited by these tax agencies. States are looking for any extra dollar they can squeeze out of citizens and small to medium-sized companies. With AvaTax, your company is protected from these types of audits. As part of a cooperative effort with states, local governments, D.C., Avalara is a Streamlined Sales and Use tax Certified Service Provider. At the end of each period, Avalara's AvaTax Returns automates your filing and consolidates remittance into a single payment.

### **Articles to Reference:**

The \$100,000 Shakedown - <http://www.tcbmag.com/ideasopinions/context/133694p2.aspx>

Governor wants to beef up tax audits to bring in more money - [http://seattletimes.nwsources.com/html/politicsnorthwest/2013558639\\_governor\\_wants\\_to\\_beef\\_up\\_tax.html](http://seattletimes.nwsources.com/html/politicsnorthwest/2013558639_governor_wants_to_beef_up_tax.html)

Chicago Sales Tax Audits - [http://www.accountingsolutionsltd.com/accounting\\_articles/chicago\\_sales\\_tax\\_audits/](http://www.accountingsolutionsltd.com/accounting_articles/chicago_sales_tax_audits/)

States Moving Aggressively on Sales Tax Audits - <http://www.nhabblog.org/2010/03/states-moving-aggressively-on-sales-tax-audits-focus-also-turns-to-classification-of-independent-contractors/>

SYSPRO USA Announces Strategic Partnership with Avalara - <http://www.avalara.com/ABOUT/News/PressReleases/SYSPRO-USA-Announces-Strategic-Partnership-With-Av>

Avalara Reports Hundreds of January Sales Tax Rate and Rule Changes - <http://www.avalara.com/ABOUT/News/PressReleases/Avalara-Reports-Hundreds-of-January-Sales-Tax-Rate>

# PRODUCT UPDATES

*By Nancy Matranga, Support Manager*



Sage Software has held true to their plan to incorporate the extensive line of their most popular Extended Solutions into the core product starting in version 4.40.

For those of you who are not familiar with Extended Solutions, they were small program enhancements that were developed by Sage and available for purchase in addition to the core product.

As of version 4.40, Sage made the decision to eliminate the extra cost of purchasing these enhancements separately and began including them into the core product free of charge.

Since service pack 1 was released, they have consistently implemented a variety of useful enhancements in subsequent service packs.



Here is a list of some of these useful new features:

AP-1011 – Option to run the Accounts Payable Aged Invoice Report for Multiple Companies.

AP-1043 – Option to create a vendor specific distribution table for faster A/P invoice entry.

AP-1077 – Additional Options for sorting checks during the printing process.

BR-1004 and BR-1005 – Positive Pay Import and Export for anti-fraud protection and automatic reconciliation of checks.



Sage has also added additional features to version 4.40 that were not previously sold as Extended Solutions.

**Here is a list of some of those useful new features:**

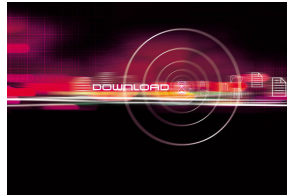
Extended Customer Number in Accounts Receivable to 20 characters.

Extended Item Number in Inventory to 30 characters.

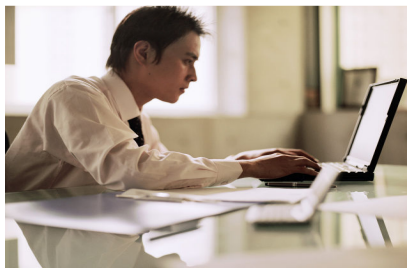
Quantity on Hand figures print directly onto Physical Count Worksheet.

ACH Payment capability in Accounts Payable.

Atrix driven Federal and State e-filing service for more efficient tax reporting.



In addition to these enhancements Sage has also made a breadth of Improvements to the tools available for customizing the product and streamlining those customizations into daily workflow.



*If you are interested in hearing more about any of these enhancements or upgrading your current version of MAS please contact us.*



# PARKINSON

## ACCOUNTING SYSTEMS



24 Professional Center Parkway  
Suite 120  
San Rafael, CA  
94903

[www.pas90.com](http://www.pas90.com)  
(415) 499-9959



### FEEDBACK FORUM

We welcome your feedback. Please feel free to send us your feedback at any time. Using e-mail is a good way.

Send to: [tracy@pas90.com](mailto:tracy@pas90.com) with “Feedback” in the subject line. With your feedback we can provide you with better and more accurate **customer service**.



**sage**  
software

Authorized Partner  
Select 2008

*Parkinson Accounting Systems is an authorized reseller for Sage Software products.*

**“Personal & Professional”**