

# Tackable · Decorative Interior Panels



## LARGE 4' x 8' Panels

- Schools
- Offices
- Retrofit
- Public Buildings
- New Construction
- Home Office
- Media Rooms
- Museums
- Retail Display
- Furniture
- Home Theatres
- Ultra-Tackable
- Architectural
- Recycled
- Sustainable
- Structural
- Sound Deadening
- Class A, B and C Fire Ratings



**homasote**  
COMPANY



**Tackability, Sound Control and Sustainable, Too**

Architects, designers and specifiers know that Homasote Company's interior panels provide aesthetic value far beyond their ultra-tackable and sound-deadening properties.

Homasote® finished panels bring unparalleled environmental and green building value to any room or project. Up to 98 percent post-consumer paper content by weight, Homasote interior panels also can contribute towards U.S. Green Building Council (USGBC) LEED® credits.

America's Leading Green Building Products Manufacturer™, Homasote Company offers these easy-to-install interior panels in a selection of natural sanded, fabric, and cork-finished treatments on varied Homasote substrates.

They are perfect for boardroom, classroom, bedroom, media room, home theatre, office, exhibition hall, retail display, and office furniture applications — any venue where structure, elegance and practicality are needed.

**PINnacle™**

PINnacle™ 440 and Class A-rated PINnacle™ N.C.F.R.® are benchmarks for tackboard, providing ultra-tackability, elegance and ease of maintenance in one finished wall panel. As complete walls or separate tack surfaces in schools, public buildings and offices, PINnacle's velvet-like sanded surface is a class of its own.

Architects, designers, artists, hobbyists and others have used classic Homasote panels for tacking plans, prints and projects for more than 90 years. Now they can upgrade to PINnacle and move plans from the backroom to the conference room to proudly display their works in progress.

PINnacle's uniform thickness makes it an excellent substrate for fabric wrapping and as an office furniture component. Class A-rated PINnacle N.C.F.R. achieves its fire resistance via a unique manufacturing process that mixes fire-retardant chemicals throughout the board.

As the nationwide emphasis on green building and LEED® grows, PINnacle can play an important role in providing tackability and sustainability while contributing towards LEED credits.

Touch-ups are a snap with PINnacle. Fine-grit sandpaper is the only repair kit needed. A light sanding should remove blemishes, spots and marks from the board.

**Available Sizes and Thicknesses**

	Thickness	Sizes	Weight
<b>PINnacle 440</b>	3/8" (9mm)	4 x 8 (1200 x 2400)	.9 lbs./sq. ft.
<b>PINnacle 440</b>	1/2" (12mm)	4 x 8 (1200 x 2400)	1.2 lbs./sq. ft.
<b>CLASS A</b>	<b>PINnacle N.C.F.R.</b>	3/8" (9mm)	4 x 8 (1200 x 2400)
	<b>PINnacle N.C.F.R.</b>	1/2" (12mm)	4 x 8 (1200 x 2400)

- A quality water-based latex paint or dye may be used. Consult paint manufacturer. Paint used with N.C.F.R. may affect fire rating.



To make sure you have the most current installation instructions visit <http://www.Homasote.com/installation> to see if newer instructions are online. If online is newer, print out and use the Internet version.

# DesignWall®

When décor and design call for tackability and fire rating, DesignWall® meets the challenge in four designer colors. We start with Class A-rated N.C.F.R.® Homasote® fiberboard, lightly sand and laminate it with a stylish, sustainable and 100 percent-recycled Guilford of Maine FR701® fabric wrapped along the long edges. The result is beautiful walls in quartz, blue neutral, grey mix and straw fabric. Also available with a Class-C fire-rated substrate.

When we combine the ultra-tackability of Homasote with fabric we create a wall panel that can be tacked and re-tacked again and again. DesignWall is the perfect finish for any office or conference room. Install it standalone as a tackboard in schools, offices and other public buildings, knowing that it will last and last.



### Specifications (substrate)

Density, lb./ft.<sup>3</sup> .....34-40  
 Water absorption by vol. (max.)  
     (2 hrs. immers.).....5%  
     (24 hrs. immers.) .....15%  
 Expansion from 50% to 90%  
     rel. hum. (max.).....0.30%  
 R-value .....0.8  
 Flame Spread .....Class I (or A)  
     (Flame Spread Table, Page 11)  
 FR 701® is a registered trademark of Guilford of Maine

### Specifications (fabric)

Contents.....100% Recycled Polyester  
 Weight.....16.0 ± 0.5 oz./lin. yd.  
 Colorfastness to Light (AATCC-16A) .....40 hrs.

### Sizes (nominal)

Thickness	Width	Length*	Weight
1/2"	4'	8', 10'	1.5 lb./sq. ft.

Actual length and width 1/8" shorter.

### Flammability

ASTM-E 84.....Class I (or A)  
 NFPA-701 Large Scale – 1989.....Passes  
 State of CA Tech. Bulletin 117  
 Section E (CS-191-53).....Passes

### Patterns Available (actual size of weave)



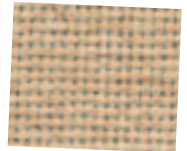
Quartz



Blue Neutral



Grey



Straw

# NovaCork

Homasote Company earned its environmental stripes decades ago when it began producing its classic sustainable tackboard by laminating renewable natural cork to a substrate of 440 Homasote®. As a result, NovaCork panels have become a standard of ultra-tackability, making them naturals for high-traffic areas, especially where items are constantly being tacked up and taken down.

Also available with a Class-A fire-rated substrate, NovaCork panels are perfect for schools, conference rooms, executive offices, artists' studios, playrooms and all work areas. Available in full wall-sized, 4' x 8' sheets and 36" x 48" tackboards.



### Typical Physical Properties

Density, lb./ft.<sup>3</sup> .....24-26  
 Water absorption by vol. (max.)  
     (2 hrs. immers.).....5%  
     (24 hrs. immers.) .....15%  
 Expansion from 50% to 90% rel. hum. ....0.25  
 R-value.....1.2

Homasote Substrate used with Cork on one side	Fire Hazard Class	Flame Spread	Fuel Contributed	Smoke Developed
N.C.F.R.®	A	25	25	15
Homasote 440	B	70	50	40

### Sizes (nominal)

Thickness	Weight lb./sq. ft.	Sizes	Finish
1/2" (Nominal)	1.0	4' x 8' Nom. (actual 47 <sup>13</sup> / <sub>16</sub> " x 95 <sup>7</sup> / <sub>8</sub> "	Available cork one side sq. edged and cork 2 sides long edges bevelled on one side only
1/2" (Nominal)	1.0	36" x 48"	cork two sides bevelled on all edges one side only

Also available in 4' x 10'.

# Burlap Panels

Homasote Company wraps 440 SoundBarrier® or N.C.F.R.® Homasote® with a top-of-the-line natural jute fabric to create a rich looking neutral-hued and ultra-tackable wall surface to complete any interior environment. Burlap Panels add a nice tackable touch to all offices and rooms.



Need a custom color? The panels can be painted to match or complement any décor. Please see installation instructions.

### Specifications

Density, lb./ft.<sup>3</sup> .....24-26  
 Water absorption by vol. (max.)  
 (2 hrs. immers.) .....5%  
 (24 hrs. immers.) .....15%  
 Expansion from 50% to 90% rel. hum.  
 (max.) .....0.25%  
 R-value .....1.11  
 Flame Spread .....Class III (or C)  
 (Flame Spread Table on Page 11)

\*Also available on special order Class I (or A)

### Sizes (nominal\*)

Thickness	Width	Length**	Weight
1/2"	4'	8', 10'	1.0 lb./sq. ft.

\*Actual length and width 1/8" shorter.

# N.C.F.R.® Homasote

Installed as a fire-resistant tackboard or custom-wrapped with specified fabrics to create unique tackable wall surfaces, N.C.F.R.® Homasote is a multi-use Class A board whose fire resistance is completely infused with a fire retardant during manufacturing. Compared to panels that are surface-coated or dipped, N.C.F.R. Homasote is uniformly fire resistant, with properties that meet UL Laboratories Class A requirements.

When custom fabric wrapping is needed and a Class A board is the required substrate, N.C.F.R. is the choice of architects, specifiers, and designers. When green building is a focus, either mandated or voluntarily, the post-consumer paper content of N.C.F.R. can help to contribute towards credits in U.S. Green Building Council (USGBC) LEED® categories.



### Specifications and Evaluations

Density, lb./ft.<sup>3</sup> .....34-40  
 Tensile parallel to surface, psi (min.) .....400-700  
 Transverse M.O.E., psi (min.) .....600-950  
 Hardness, lbs. (Janka Ball) (min.) .....275  
 Water absorption by vol. (max.)  
 (2 hrs. immers.) .....5%  
 (24 hrs. immers.) .....14%  
 Expansion from 50% to 90%  
 rel. hum. (max.) .....0.30%  
 R-value .....0.85  
 K-value .....0.59

### Sizes (nominal)

Thickness	Sizes	Weight lb./sq. ft.
1/2"	4' x 8' 4' x 10'	1.5

# homasote COMPANY

932 Lower Ferry Road, West Trenton, New Jersey 08628  
 800-257-9491 or 609-883-3300 • Fax: (609) 883-3497  
 Sales: Extension 1500 • Technical Support: Extension 1332  
 www.homasote.com • sales@homasote.com

Visit <http://www.homasote.com>  
 For Code Approvals and Evaluations:  
<http://www.homasote.com/codeval>  
 For Product Installation Instructions:  
<http://www.homasote.com/installation>

