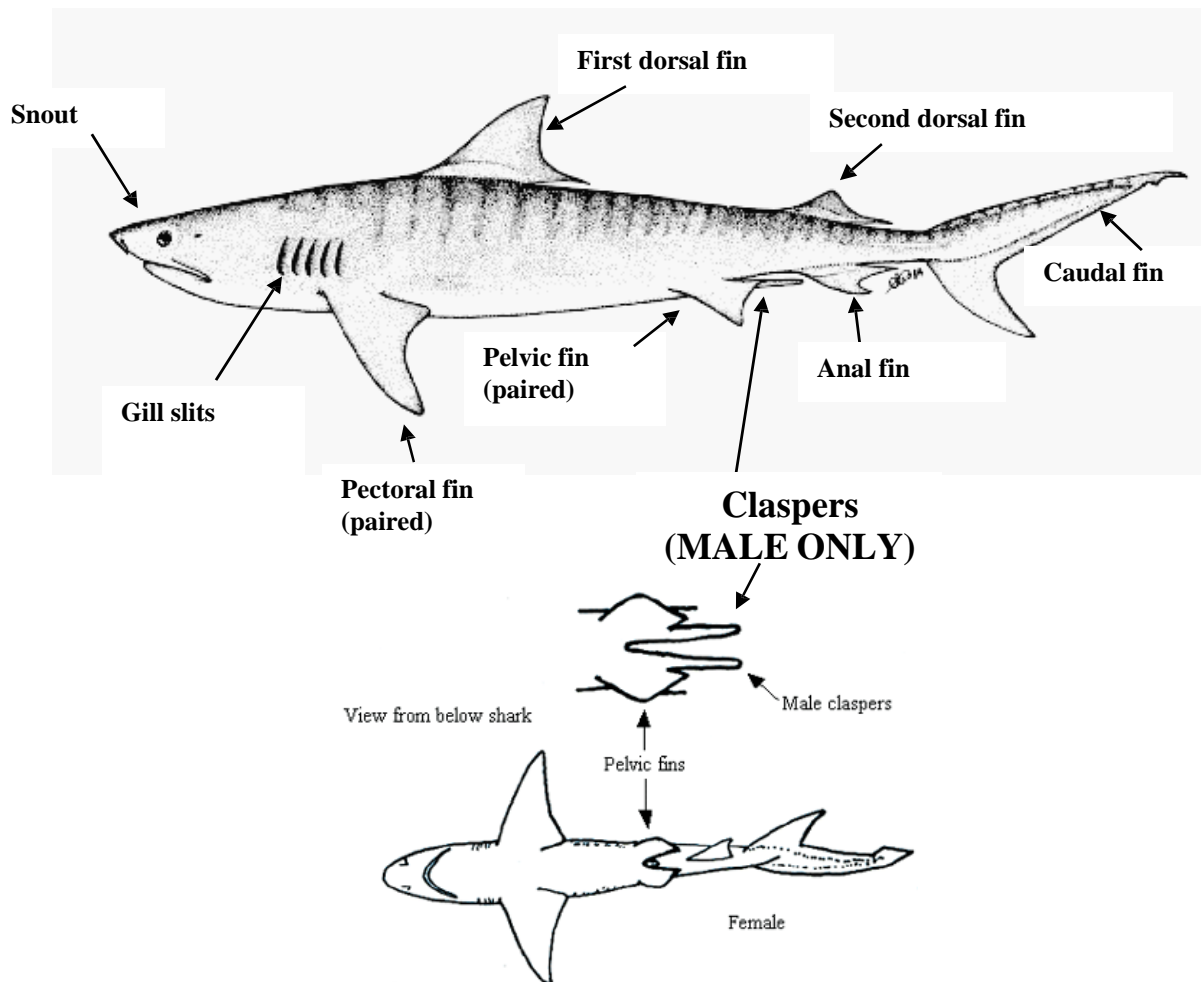


**GUY HARVEY ULTIMATE SHARK CHALLENGE  
MOTE MARINE LABORATORY  
CENTER FOR SHARK RESEARCH**



**ANGLER'S GUIDE TO FLORIDA SHARKS  
OF THE GULF OF MEXICO**

**Shark Anatomy**



# SPECIES LIST FOR THE GUY HARVEY ULTIMATE SHARK CHALLENGE

Qualifying Species	Points	Likelihood of Catch
Dusky:	700	Low
Mako:	700	Low
Sand tiger:	700	Low
Tiger:	600	Medium
Hammerhead (scalloped 8'+):	550	Medium
Hammerhead (scalloped 5' - 8'):	350	Medium
Hammerhead (great 8'+):	500	High
Hammerhead (great 5' - 8'):	350	High
Bull:	300	High
Lemon:	200	High
Sandbar:	150	Medium
Blacktip (7 max per day):	100	High
Spinner (7 max per day):	100	Medium
Nurse (2 max per day):	50	High

Bonus points will be awarded for the following measurements of any qualifying species caught.

Feet	Points
6 – 7	20 points
7 – 8	30 points
8 – 9	40 points
9 – 10	50 points
10 +	100 points

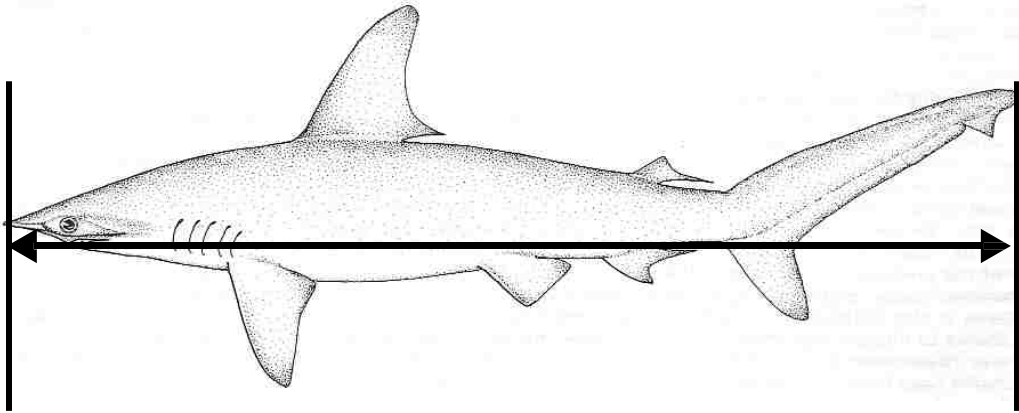
Additional bonus Points:

- The team with the first recorded and reported qualifying species (5 feet +) caught on each day will be awarded 100 bonus points. In the event of a tie, all teams tied will earn the bonus points.
- The team that catches and tags the most qualifying sharks each day will be awarded 100 bonus points. In the event of a tie, all teams tied will earn the bonus points.
- The team that catches and tags the largest shark each day will be awarded 100 bonus points. In the event of a tie, all teams tied will earn the bonus points.

**MOTE MARINE LABORATORY  
 CENTER FOR SHARK RESEARCH  
 1600 KEN THOMPSON PARKWAY  
 SARASOTA FL 34236**

**941-388-4441**

## **MEASURING SHARK TOTAL LENGTH**

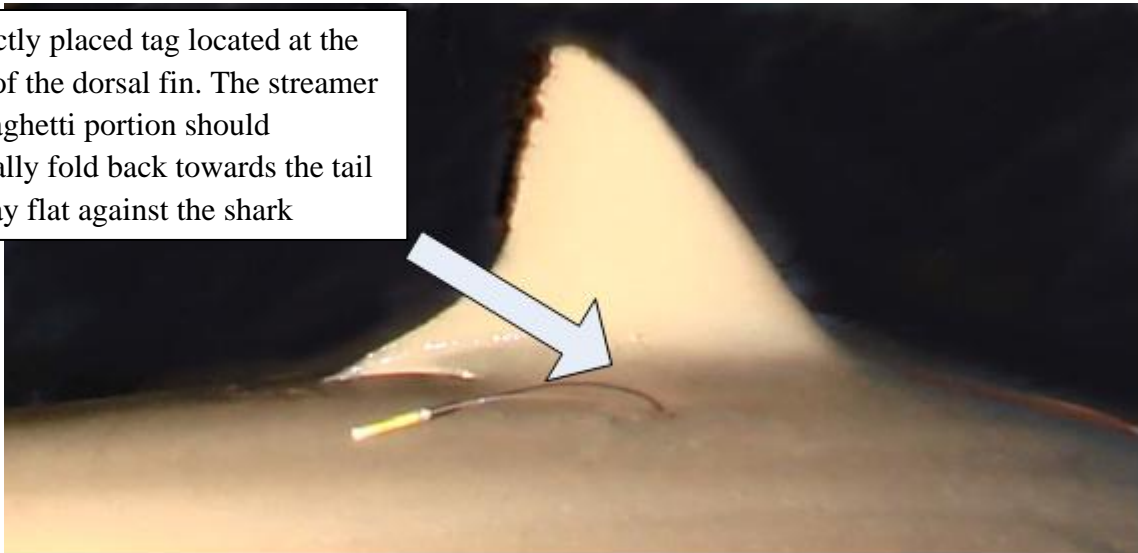


Minimum straight-line distance from tip of the snout to the vertical line connecting with the upper tip of the tail, with the tail in its natural position

## **TAGGING A SHARK**

When tagging it is important to correctly insert the tag at the middle of the 1<sup>st</sup> dorsal fin along the base (body) of the fin. The tag tip should point towards the head of the shark and the streamer towards the tail.

Perfectly placed tag located at the base of the dorsal fin. The streamer or spaghetti portion should naturally fold back towards the tail and lay flat against the shark

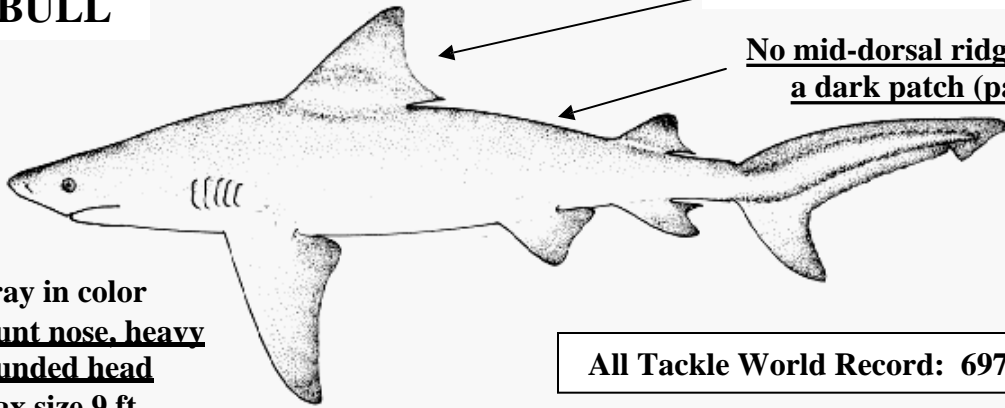


SHARK DRAWINGS COURTESY OF FOOD AND AGRICULTURE ORGANIZATION OF THE U.N.

**MOTE MARINE LABORATORY  
CENTER FOR SHARK RESEARCH  
1600 KEN THOMPSON PARKWAY  
SARASOTA FL 34236**

**941-388-4441**

## BULL



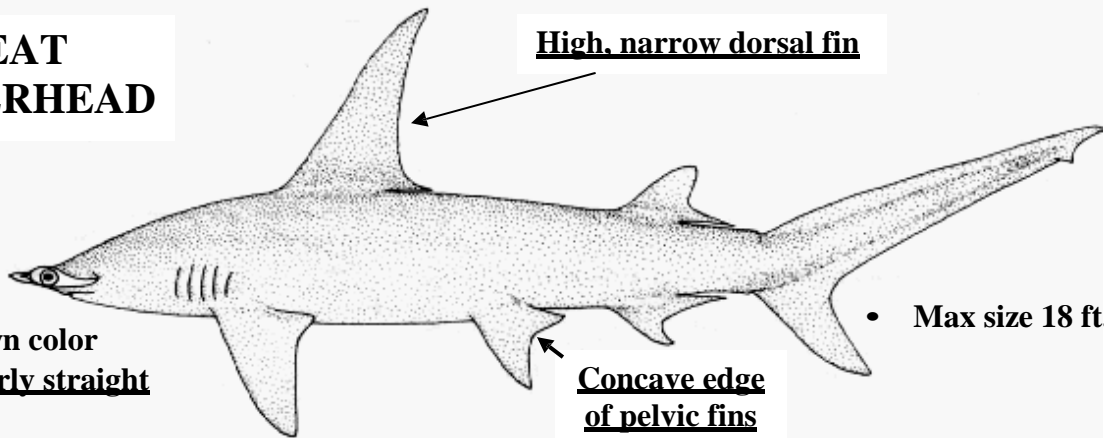
Large but low, swept-back dorsal fin

No mid-dorsal ridge, but often a dark patch (parasites)

- Gray in color
- Blunt nose, heavy rounded head
- Max size 9 ft.

All Tackle World Record: 697 lbs, ~8.5 ft.

## GREAT HAMMERHEAD

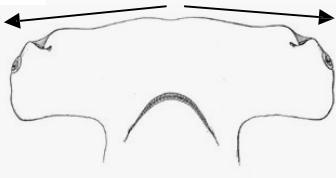


High, narrow dorsal fin

Concave edge of pelvic fins

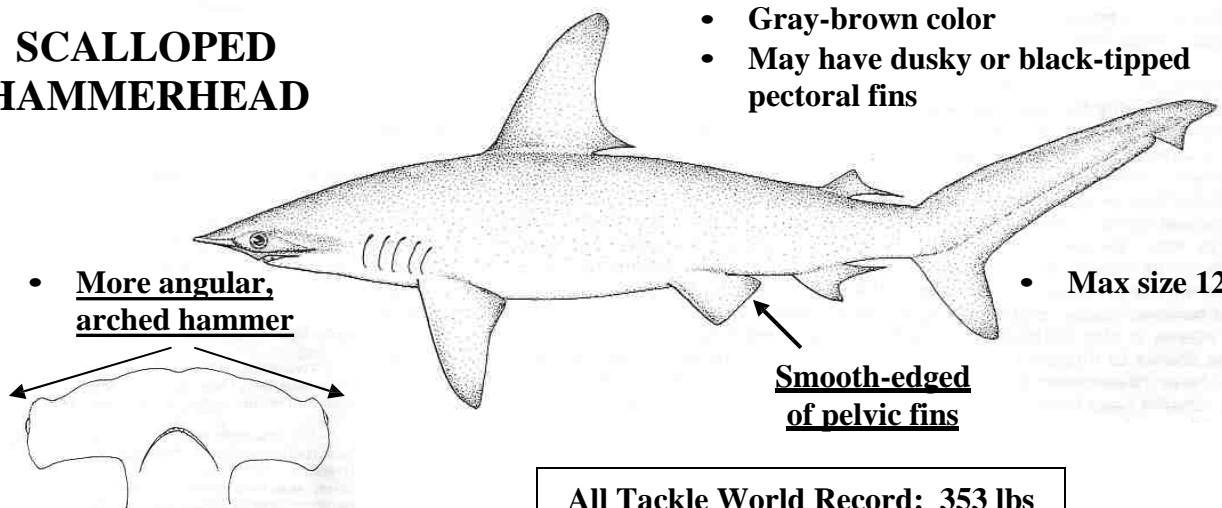
- Gray-brown color
- Large, nearly straight hammer

- Max size 18 ft.



All Tackle World Record: 1,280 lbs, 14.5 ft.

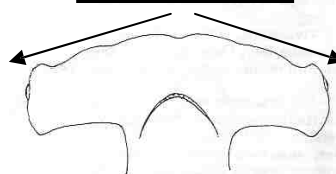
## SCALLOPED HAMMERHEAD



- Gray-brown color
- May have dusky or black-tipped pectoral fins

- More angular, arched hammer

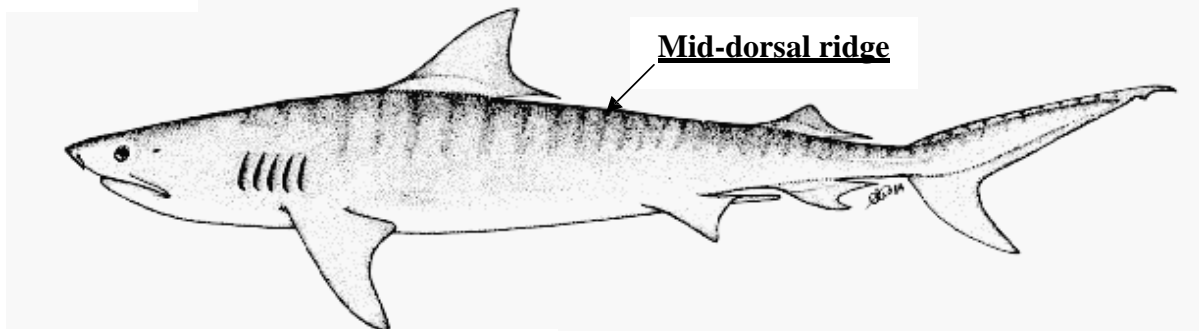
- Max size 12 ft.



Smooth-edged of pelvic fins

All Tackle World Record: 353 lbs

## TIGER

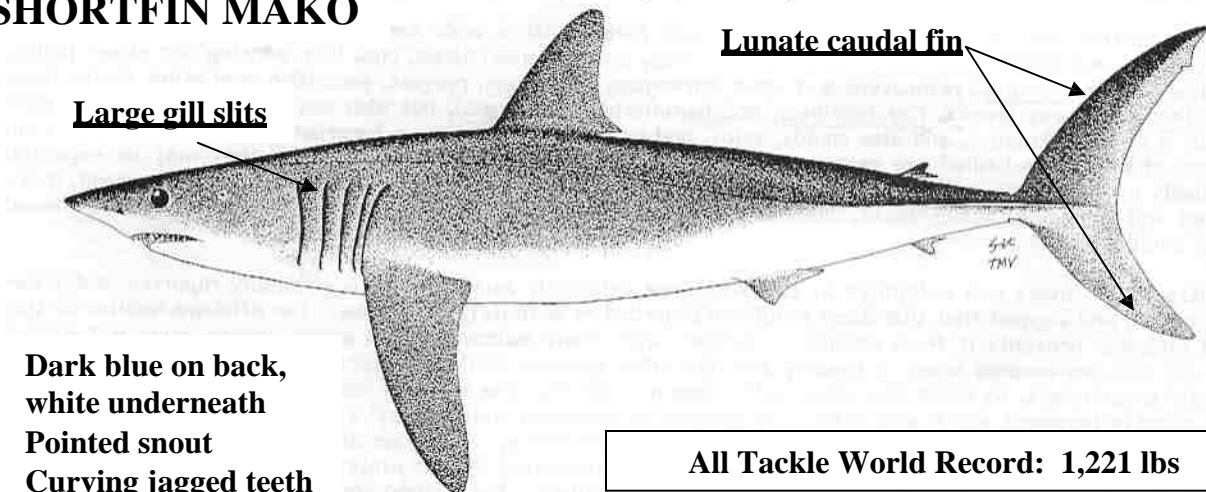


- Gray in color with broad stripes esp. in younger sharks
- Broad, blunt head
- Max size 18 ft.

All Tackle World Record: 1,785 lbs, ~14 ft.

---

## SHORTFIN MAKO

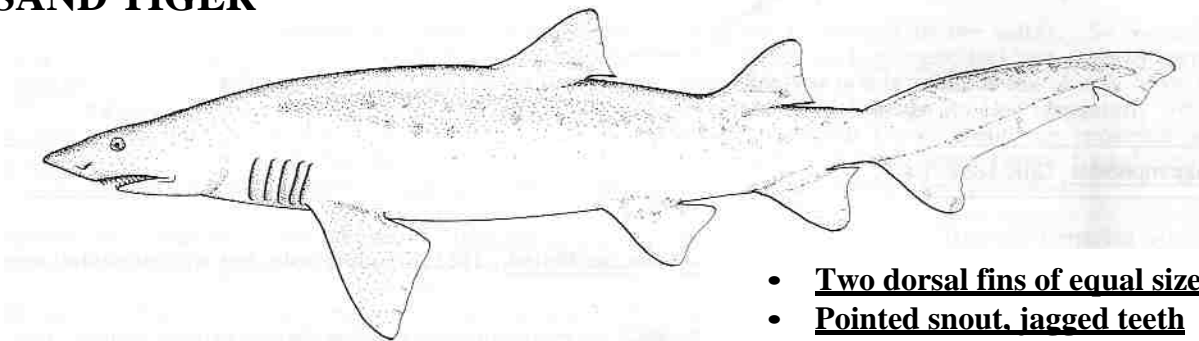


- Dark blue on back, white underneath
- Pointed snout
- Curving jagged teeth
- Max size 13 ft.

All Tackle World Record: 1,221 lbs

---

## SAND TIGER

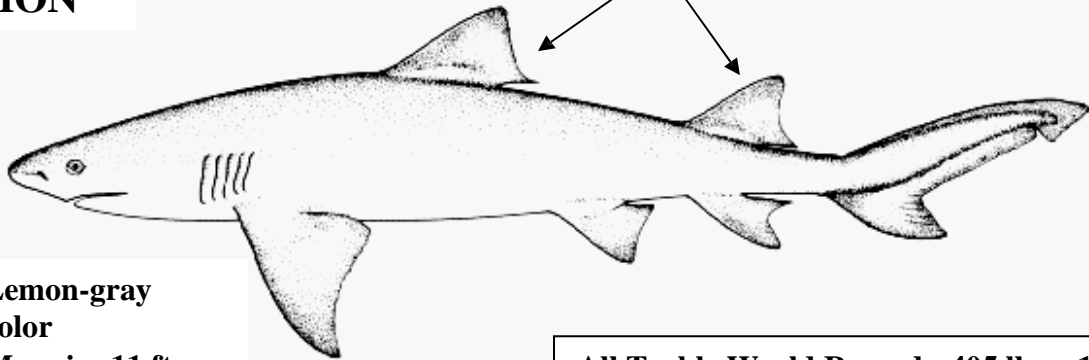


All Tackle World Record: 350 lbs

- Two dorsal fins of equal size
- Pointed snout, jagged teeth ('snaggletooth' look)
- Spots on body sometimes
- Max size 12 ft.

## LEMON

Both dorsal fins approx. same size

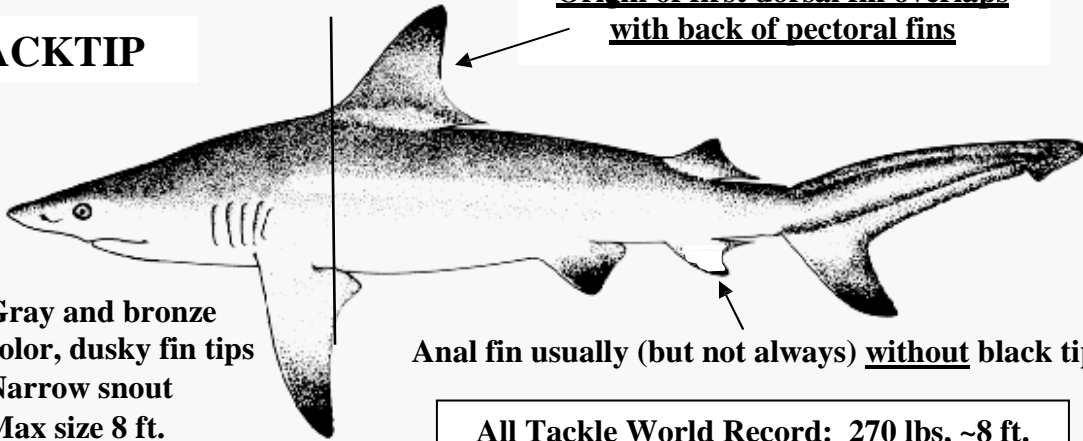


- Lemon-gray color
- Max size 11 ft.

All Tackle World Record: 405 lbs, ~10.5 ft.

## BLACKTIP

Origin of first dorsal fin overlaps with back of pectoral fins



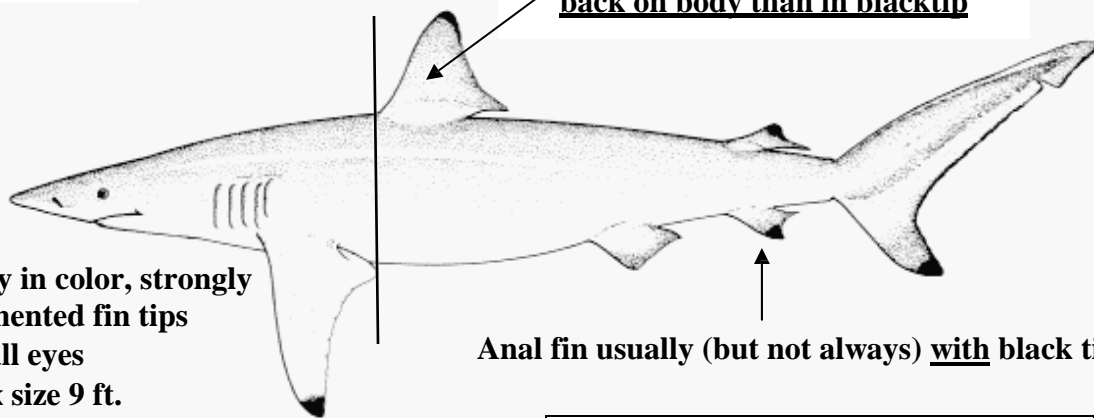
- Gray and bronze color, dusky fin tips
- Narrow snout
- Max size 8 ft.

Anal fin usually (but not always) without black tip

All Tackle World Record: 270 lbs, ~8 ft.

## SPINNER

First dorsal fin smaller and farther back on body than in blacktip

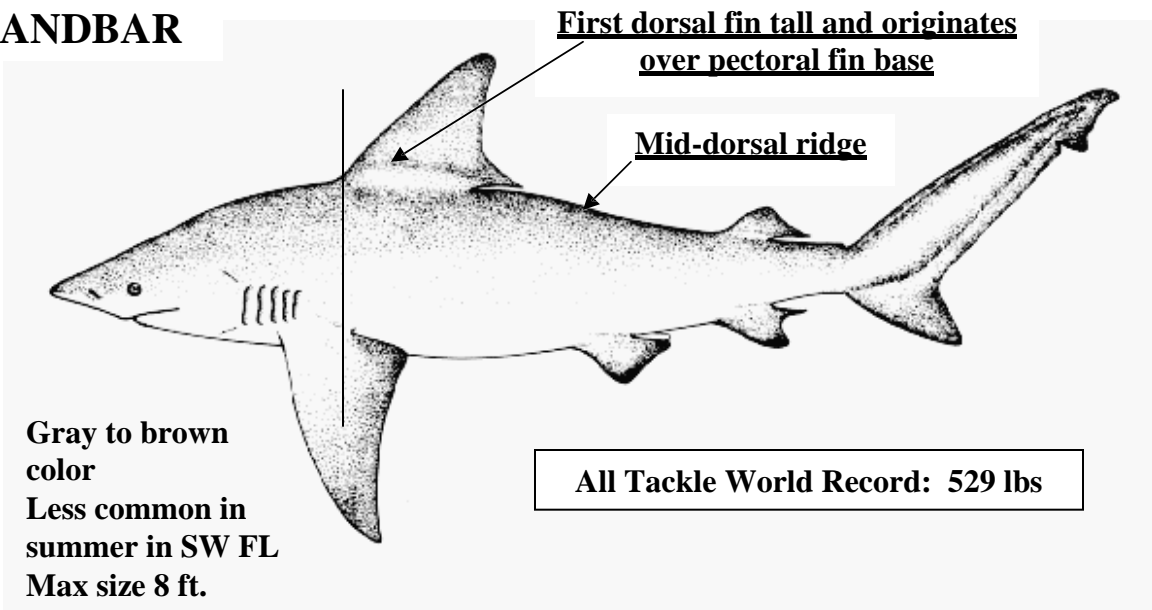


- Gray in color, strongly pigmented fin tips
- Small eyes
- Max size 9 ft.

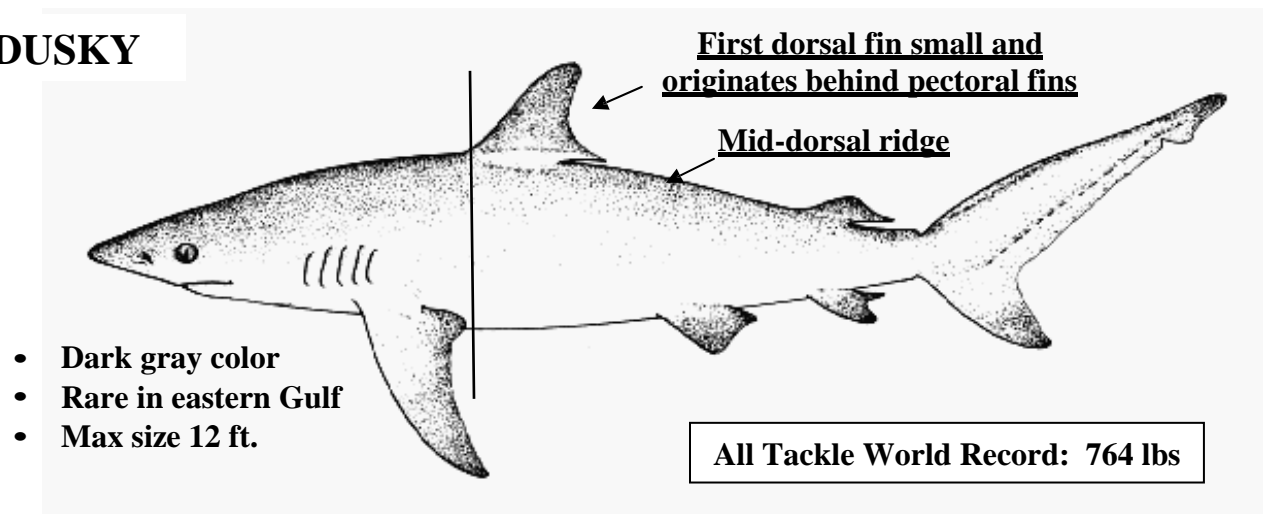
Anal fin usually (but not always) with black tip

All Tackle World Record: 208 lbs

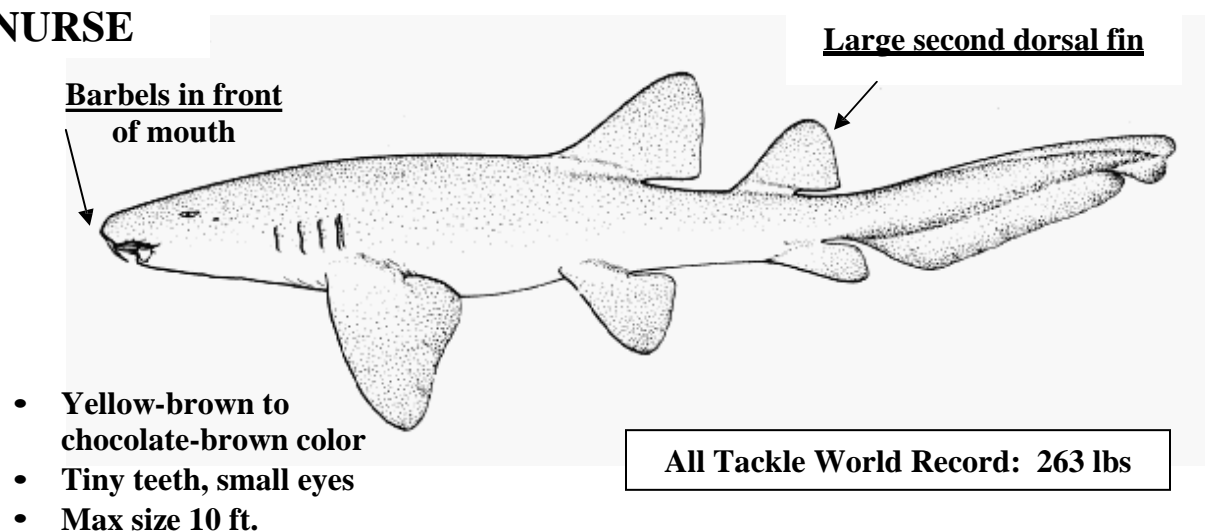
## SANDBAR



## DUSKY



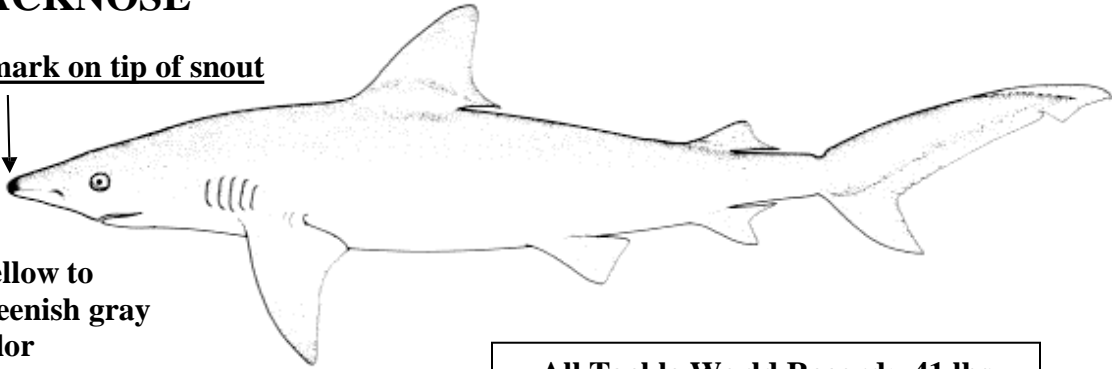
## NURSE



## Small Coastal Sharks

### **BLACKNOSE**

Black mark on tip of snout

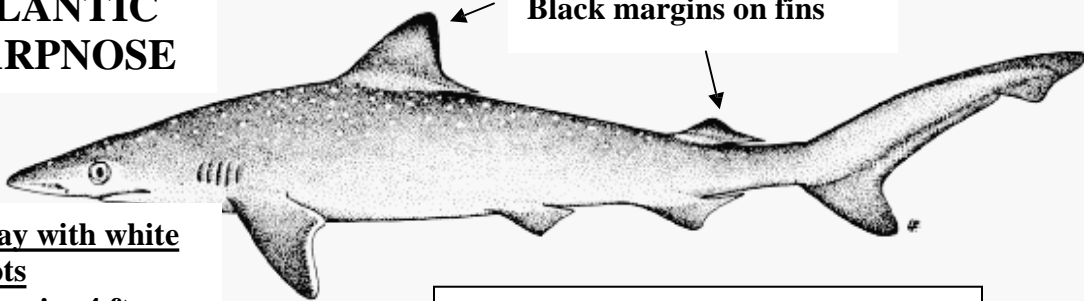


- Yellow to greenish gray color
- Max size 5 ft.

All Tackle World Record: 41 lbs

### **ATLANTIC SHARPNOSE**

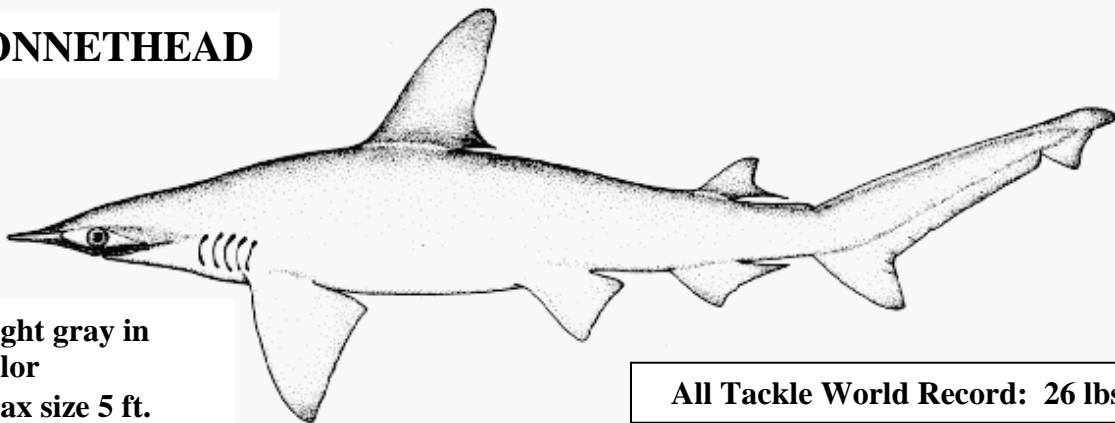
Black margins on fins



- Gray with white spots
- Max size 4 ft.

All Tackle World Record: 16 lbs

### **BONNETHEAD**



- Light gray in color
- Max size 5 ft.

All Tackle World Record: 26 lbs

