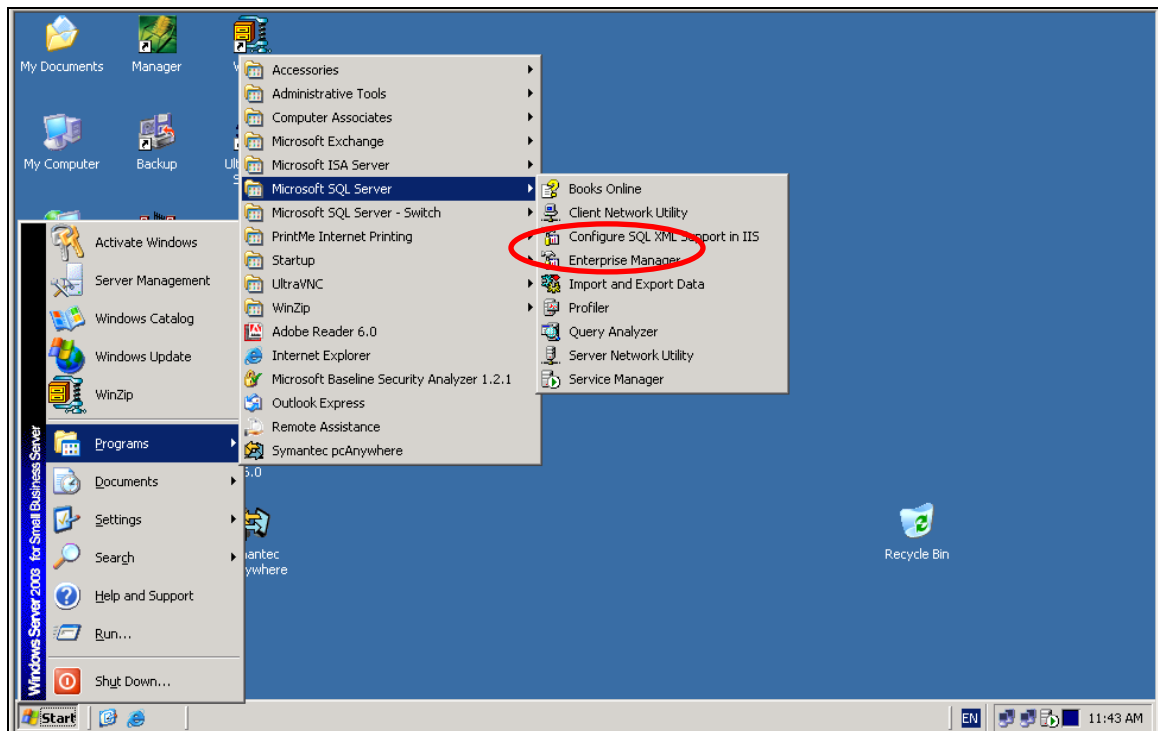


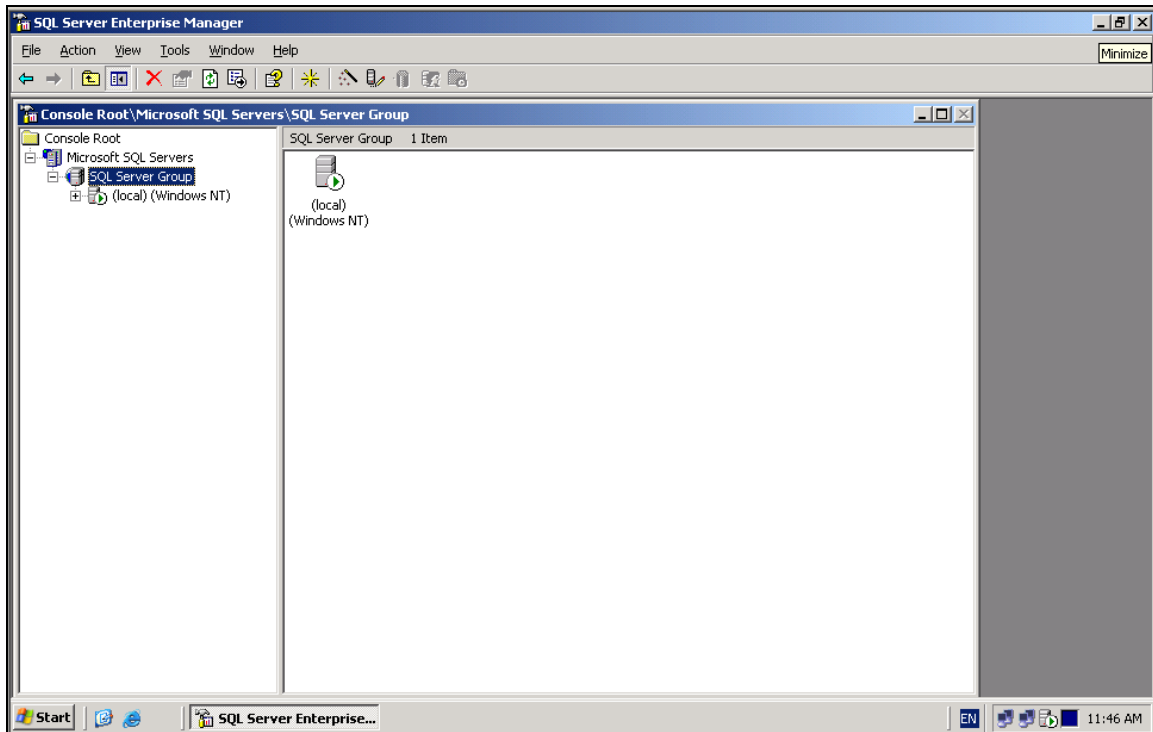
Adding an SQL Server to an Existing SQL Server Group

By following this procedure you will add the SQL and MSDE instances to the SQL Server group. Once you have done this you can then see what type of database instance it is (SQL or MSDE) you can also see the service pack and build numbers.

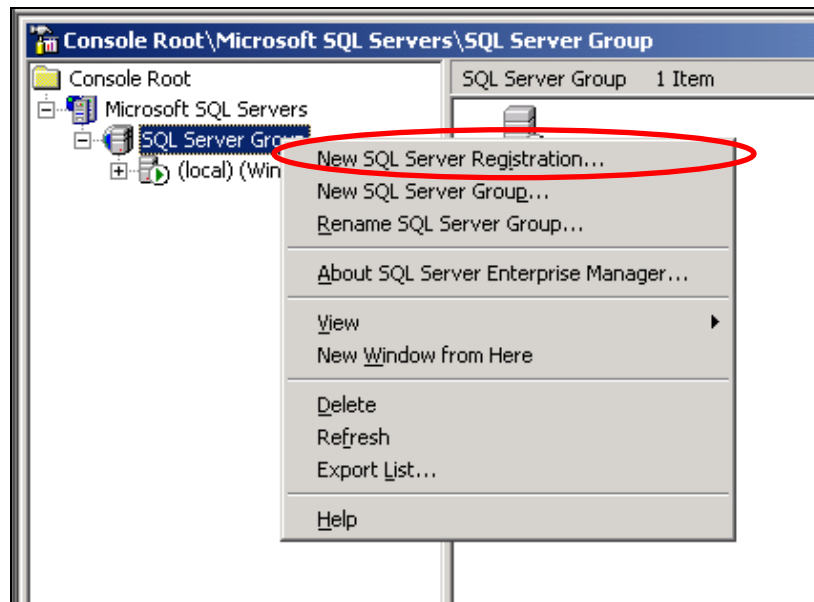
1. Click *Start, Programs, Microsoft SQL Server, Enterprise Manager*



2. Expand *Console Root, Microsoft SQL Servers, SQL Server Group*

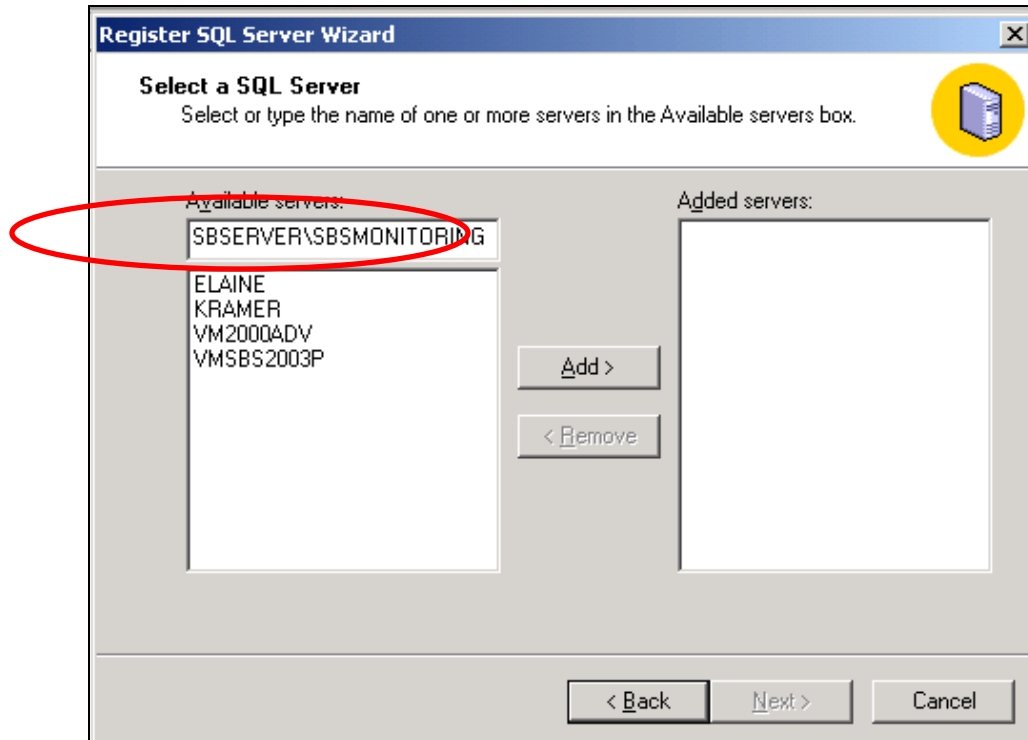


3. Right Click *SQL Servers Group*, Select *New SQL Server Registration*

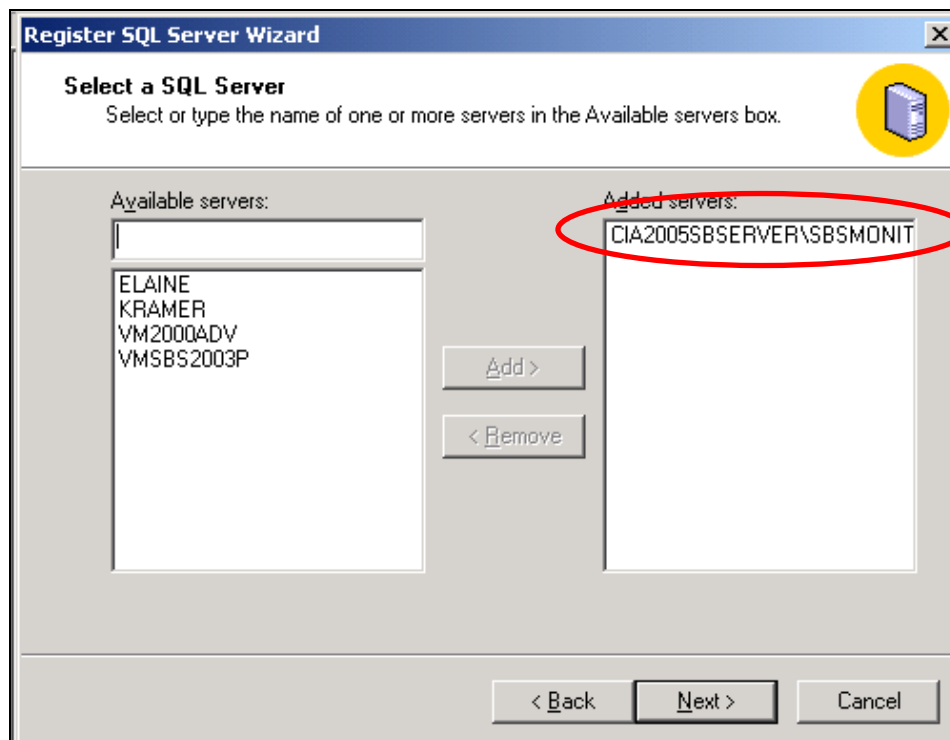


4. Click *Next*

5. Enter *<domainname>\SBSMONITORING*, then click *add*

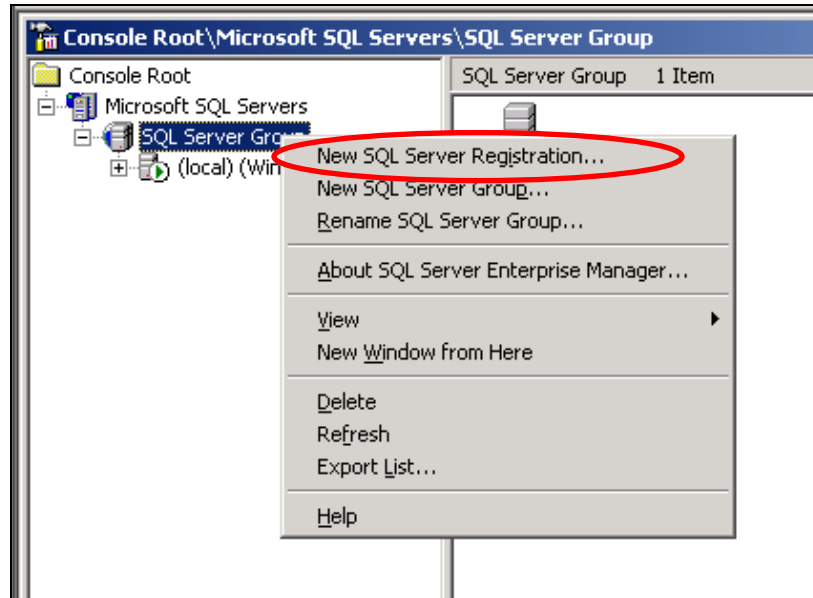


6. The `<domainname>\SBSMONITORING` should now appear on the right side of this window under *Added Servers*. Click *next*

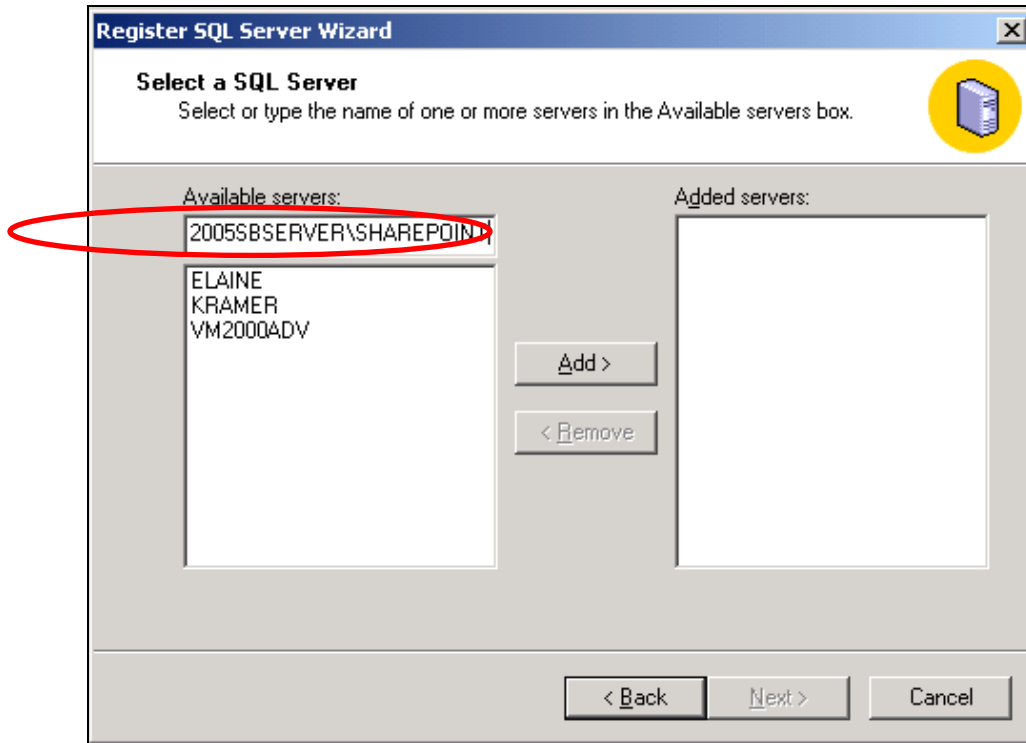


7. The *Windows Authentication* should be selected (default), click *next*

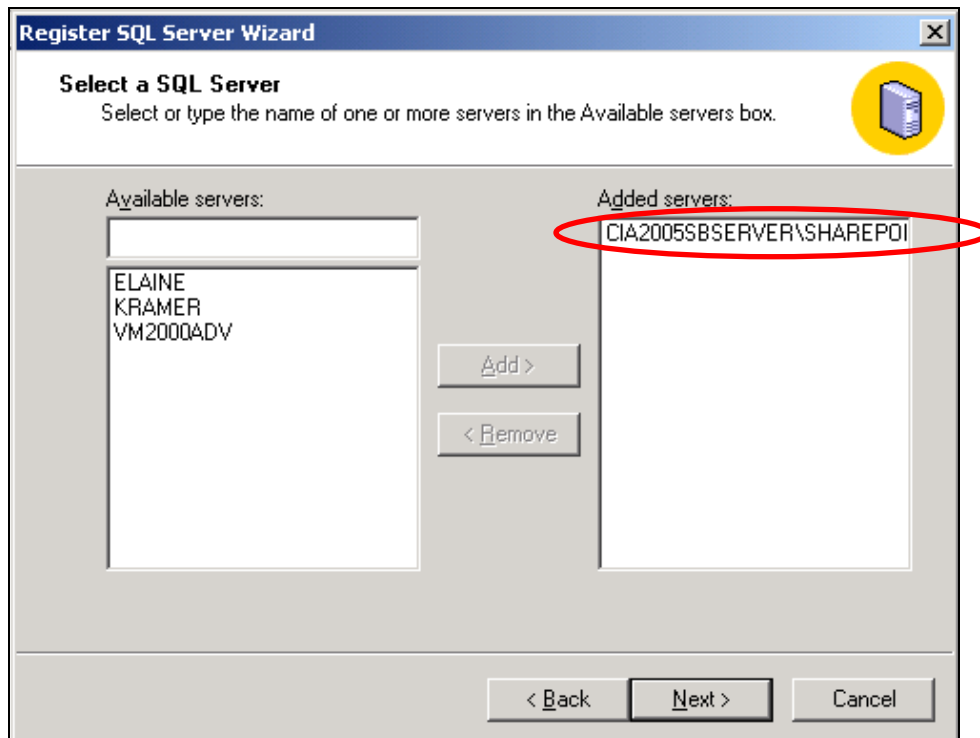
8. The SQL Server should be added to *an existing SQL Server group* (default), Click *Next*
9. Click *Finish*
10. Right Click *SQL Servers Group*, Select *New SQL Server Registration*



11. Click *Next*
12. Enter *<domainname>\SHAREPOINT*, then click *add*



13. The `<domainname>\SHAREPOINT` should now appear on the right side of this window under *Added Servers*. Click *next*



14. The *Windows Authentication* should be selected (default), click *Next*

1:28:01 PM 3/06/2005

15. The SQL Server should be added to *an existing SQL Server group* (default), Click *Next*

16. Click *Finish*

17. You should now see three instances of SQL within the one SQL Server Group

