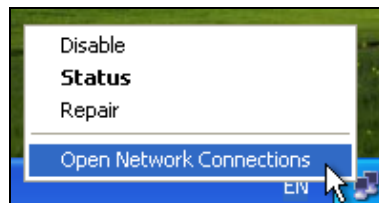
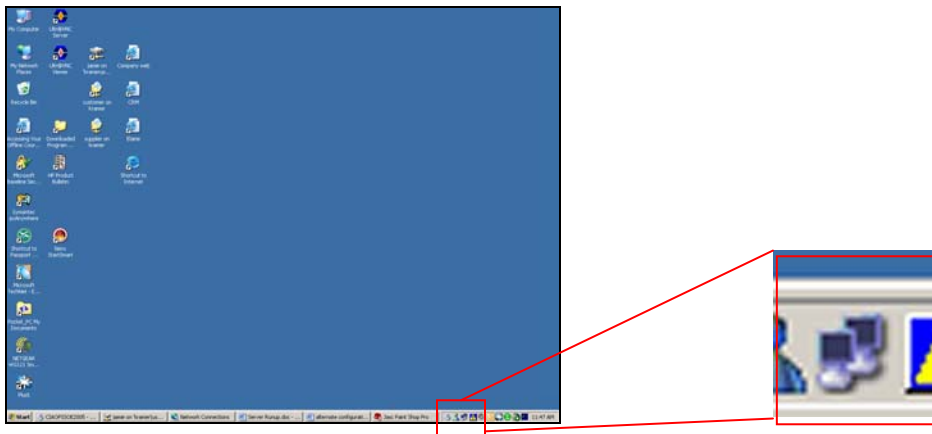


Setting Alternate Network Configuration

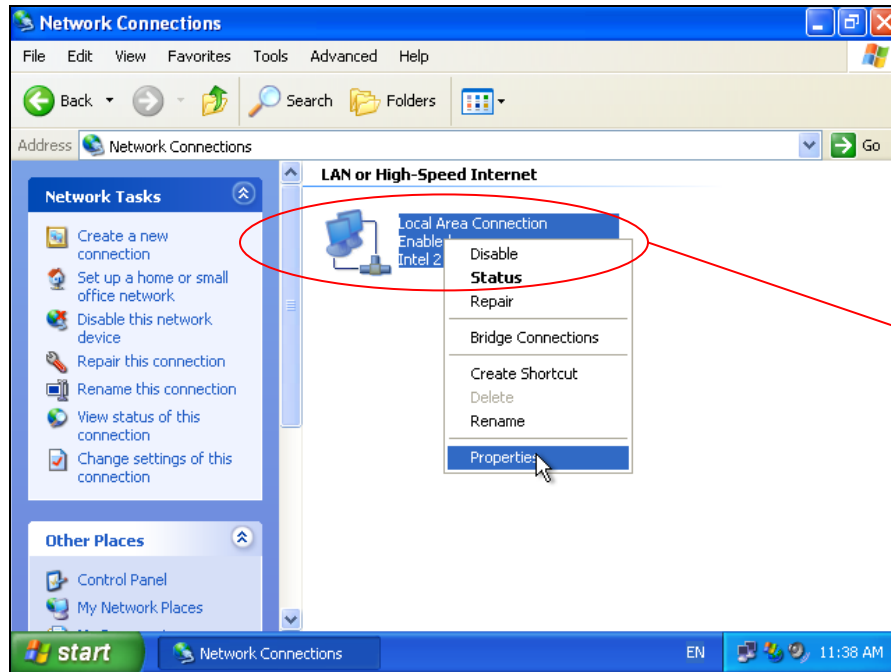
Microsoft Windows XP has the ability to allow two different IP configurations. This allows the machine to be used on multiple networks. In many cases you will have your primary connection type set to dynamic for business based connectivity and the alternate configuration set to static.

The following documentation shows you how to set the alternate setup for a static configuration.

1. Right Click the network connection on the taskbar (near the clock bottom, right side of screen) as seen below.

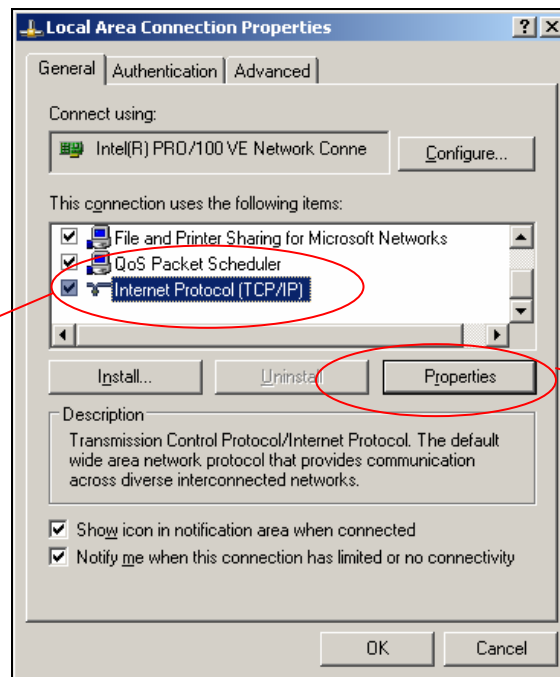


2. Left click “Open Network connections” from the list.
3. If the network connection icons are not visible on the task bar then select Start | Control Panel | Network connections
4. Right Click “Local Area Connection” shown below.



Local Area Connection

5. Select "Properties"
6. Scroll down the List and Left Click "Internet Protocol (TCP/IP)", then click the properties button

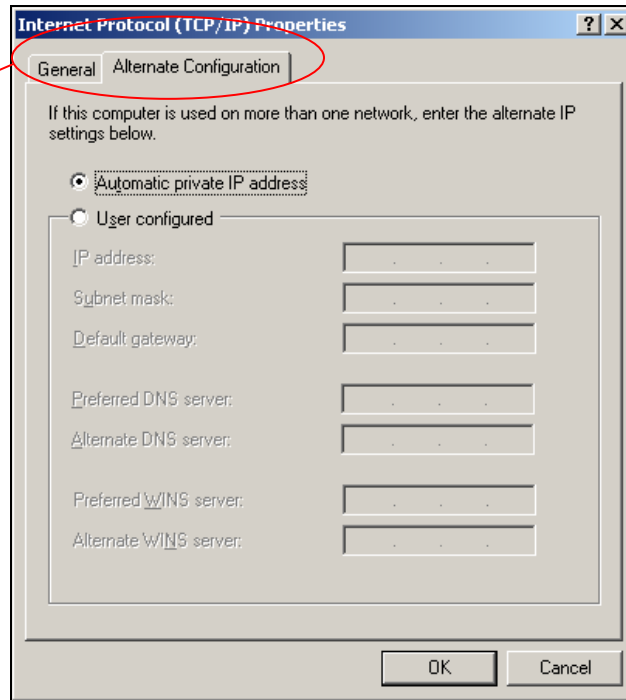


Internet Protocol (TCP/IP)

Properties button

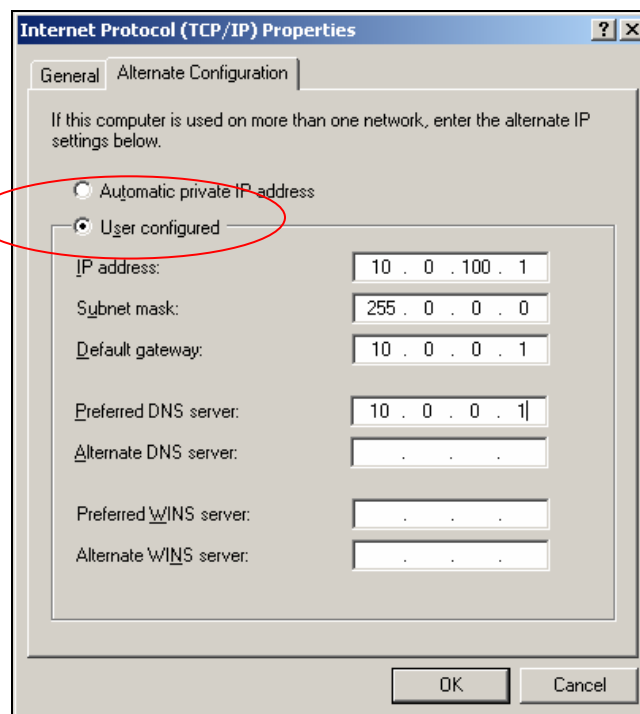
7. Select the “Alternate configuration” TAB.

Alternate Configuration TAB



8. Click the User configured radio button

User Configured radio button



Enter the appropriate IP address (in this case 10.0.100.1) and other details (here subnet mask: 255.0.0.0, default Gateway: 10.0.0.1, preferred DNS: 10.0.0.1)

9. Keep clicking “OK” until your return to the network connections window. Close this window.
10. The configuration settings you have just enabled may not become active until the workstation is rebooted.