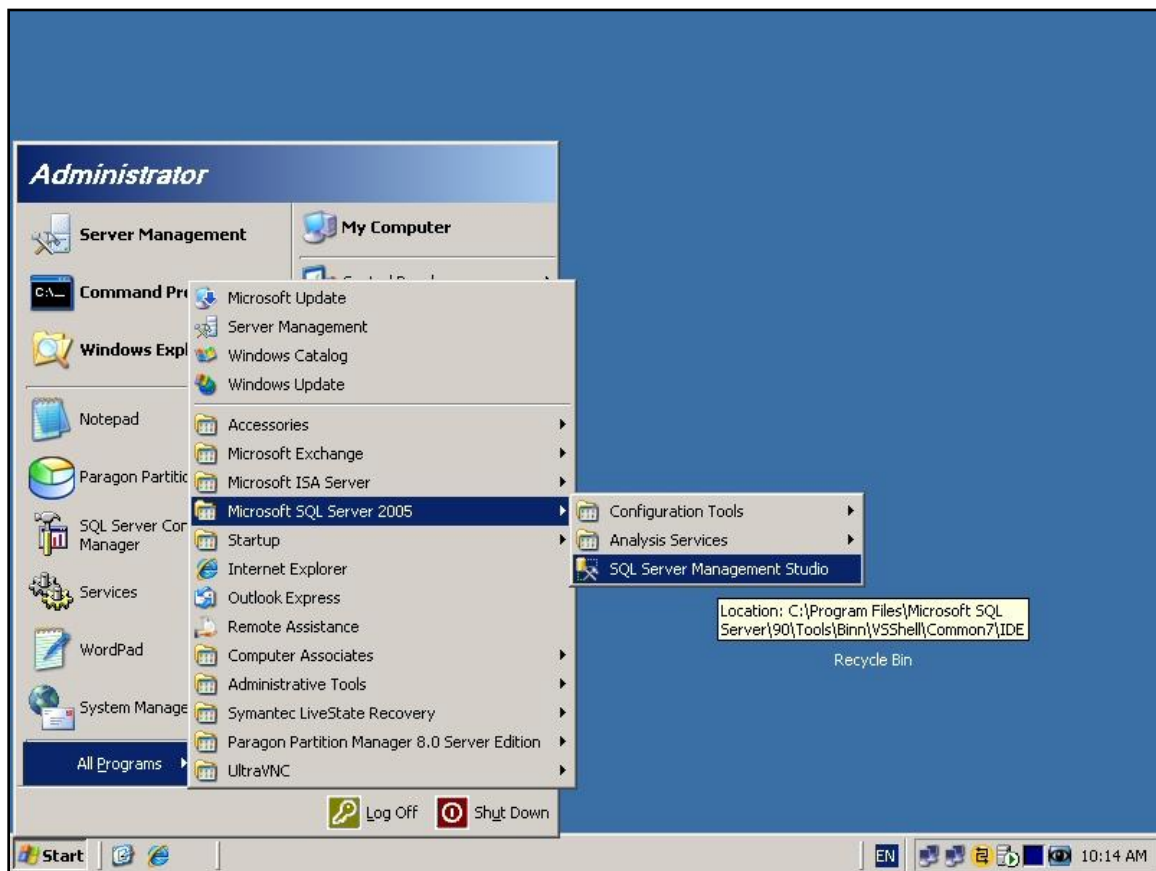


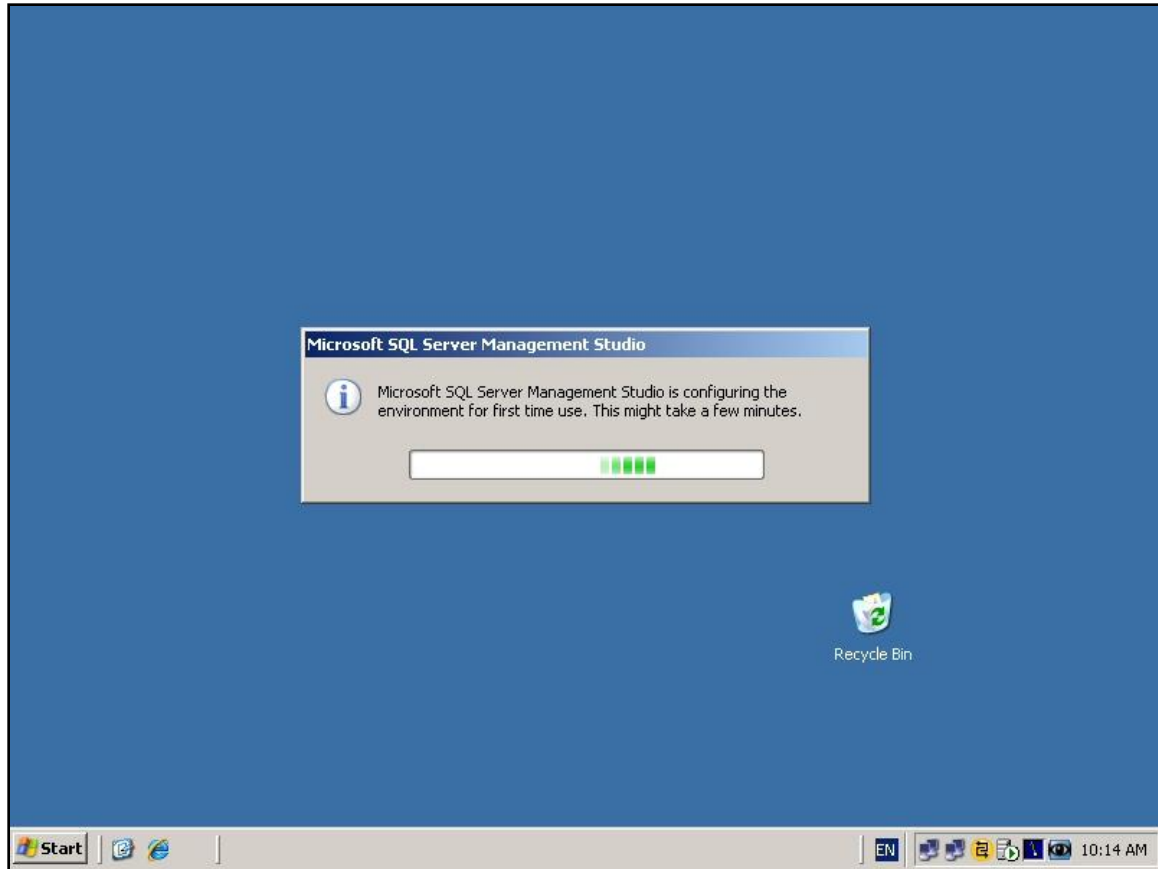
Adjusting Memory SQL2005 memory usage Version 1.00

In most SBS 2003 R2 Premium installation the memory usage of SQL Server 2005 is far greater than it needs to be by default. It is possible to adjust this to ensure that excess memory isn't consumed.

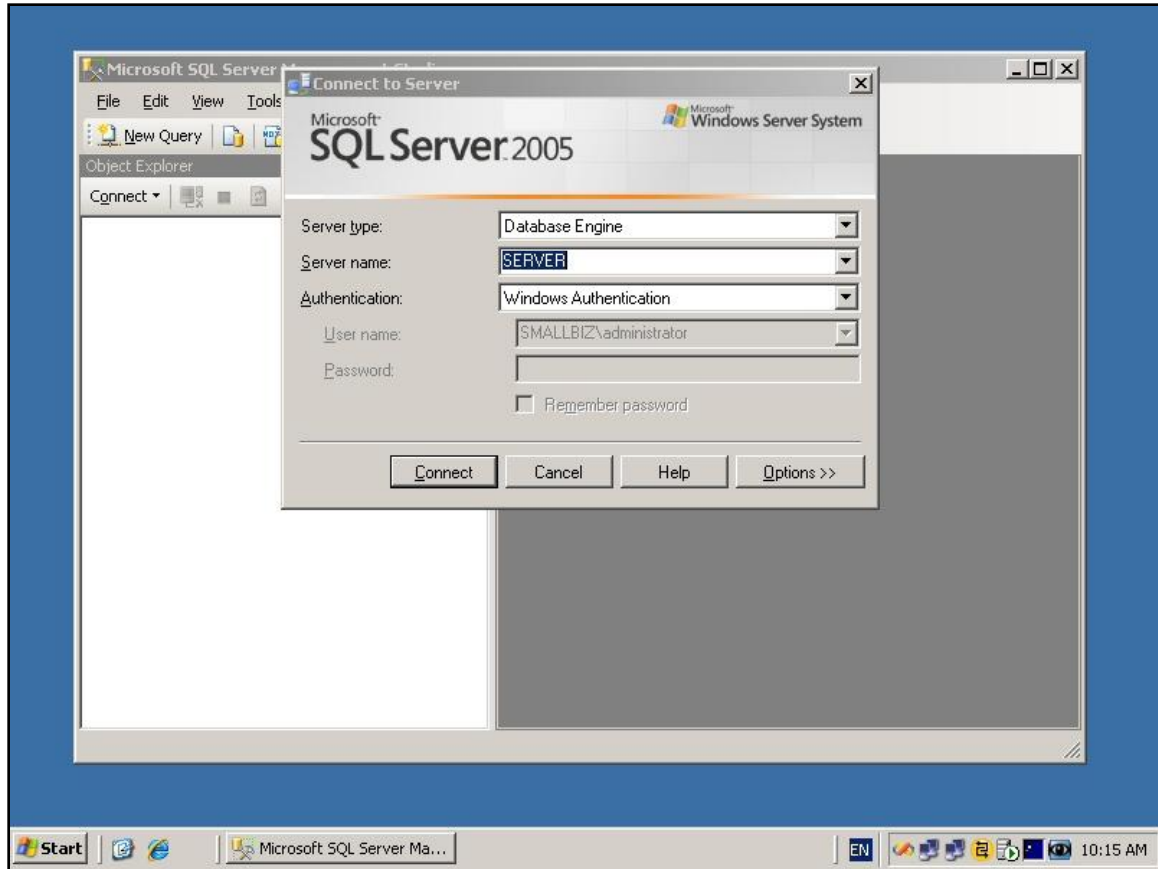
1. Need to ensure that SQL 2005 Management Tools are installed on the server. This can be done during installation of SQL2005 or afterwards as laid out in additional technical documentation.



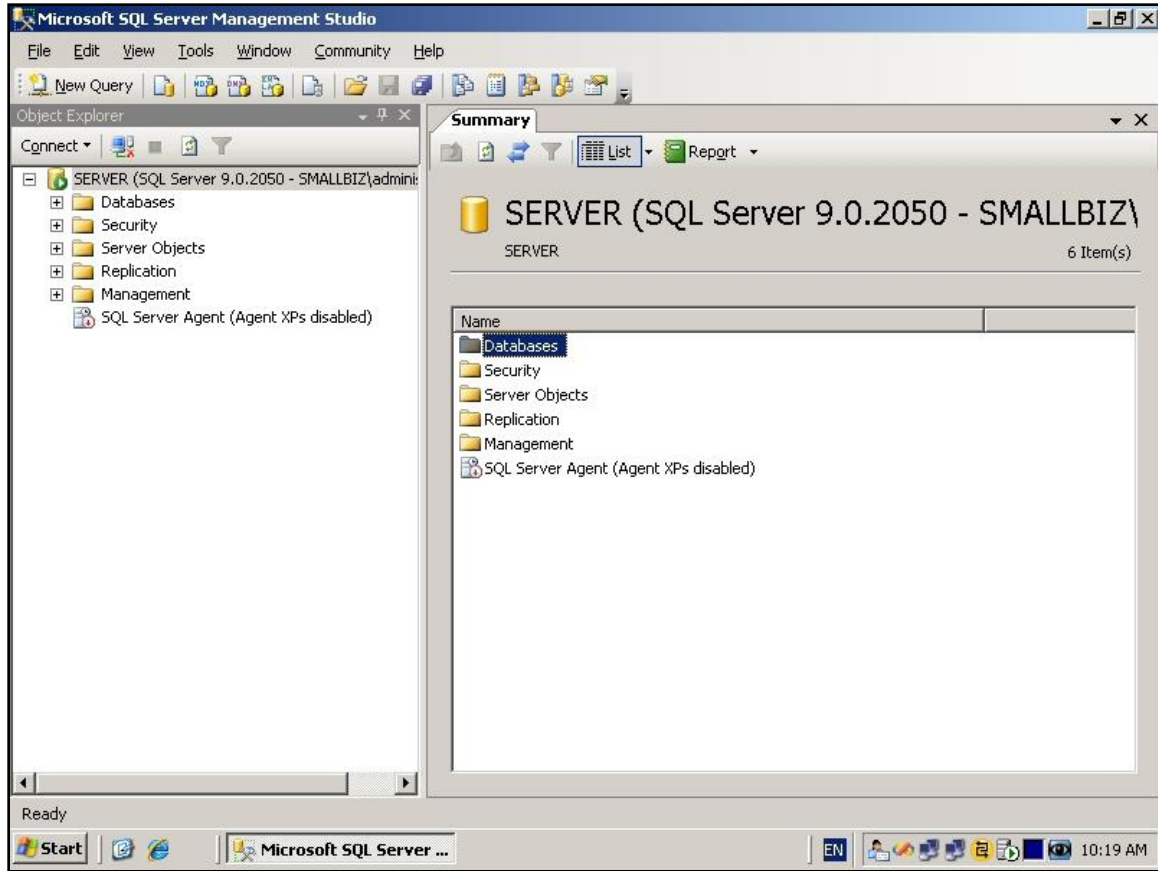
2. On the server console select *Start / All Programs / Microsoft SQL Server 2005 / SQL Management Studio*.



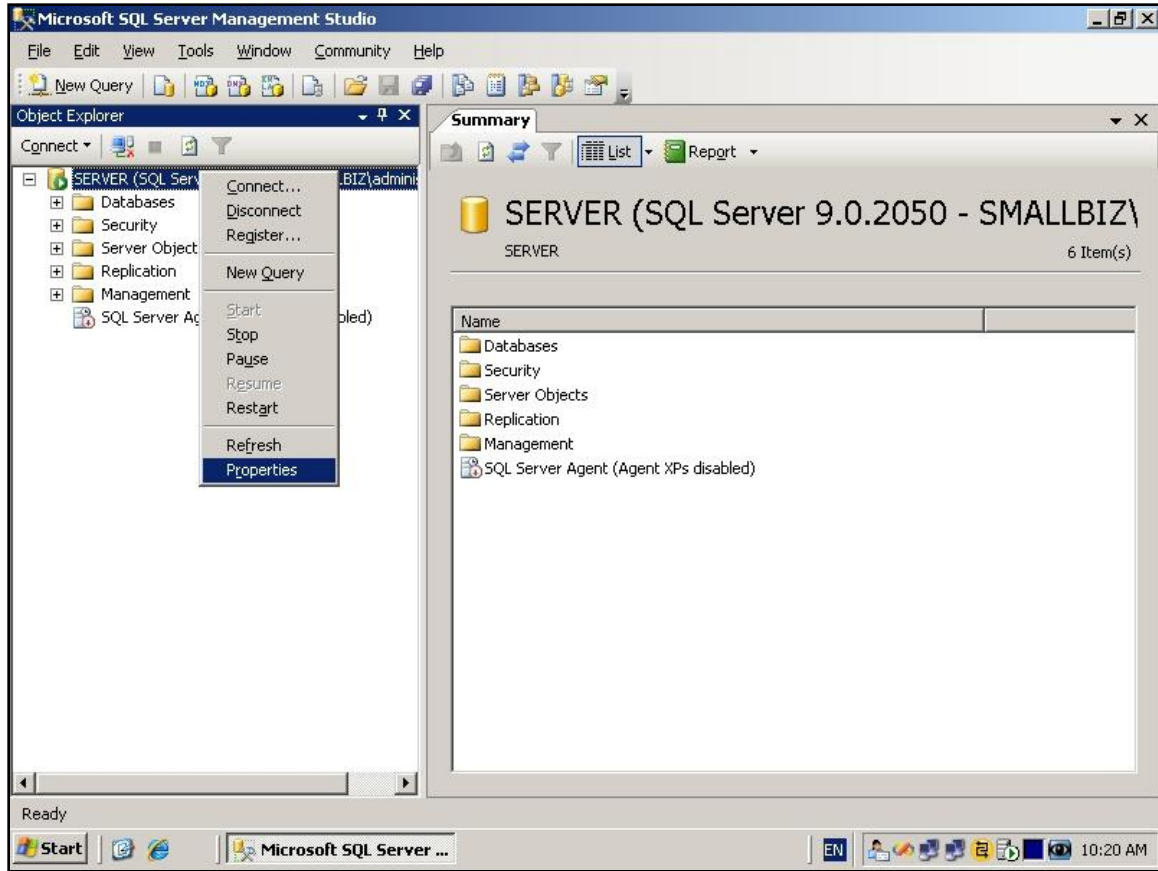
3. If this is the first time that the SQL Management studio has been run it will take a minute to configure itself for your system. This will only happen the first time you run the SQL Management studio.



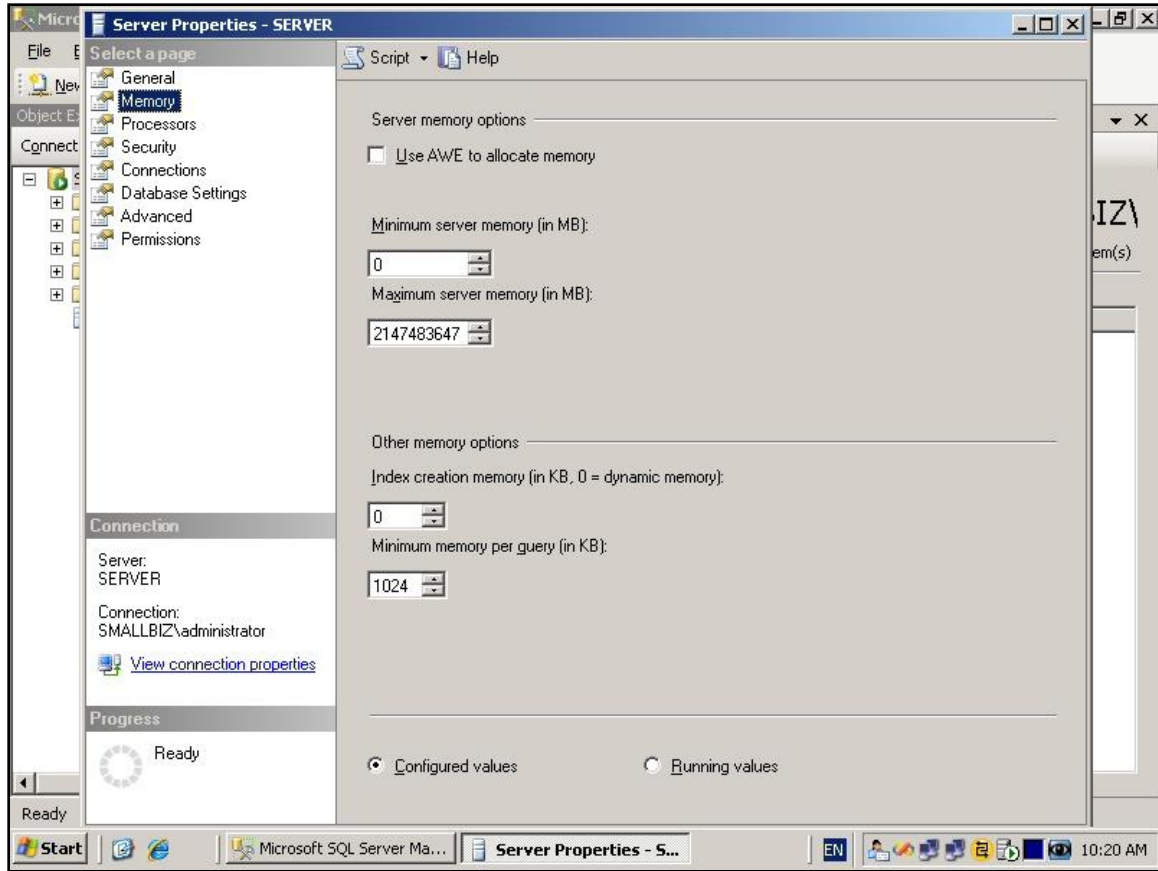
4. You will now be prompted to connect to your SQL server. All the fields should be complete so simply press the *Connect* button to continue.



5. The SQL Server Management Studio should now appear like so.



6. *Right mouse* click the server at the top of the tree on the left and select *Properties* from the menu that appears.



7. Select the Memory option on the left and then change the maximum Server to suit your requirements.