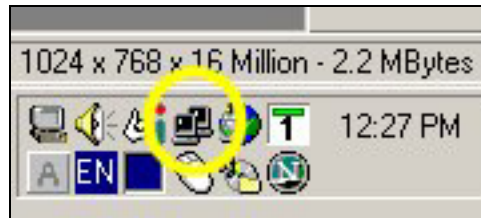


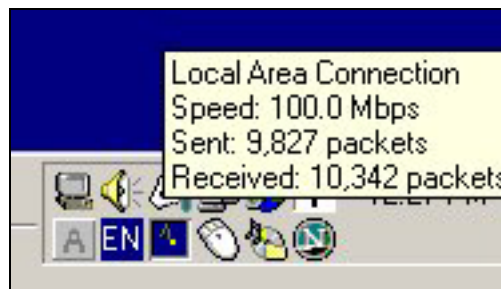
Checking network connections

Connectioning / Disconnecting

In Windows 2000 and Windows XP you can display an icon on your system tray (lower right of the screen near the date and time) that will show you the status of your network connection. When enabled it will appear as two small computer, one behind the other like so :



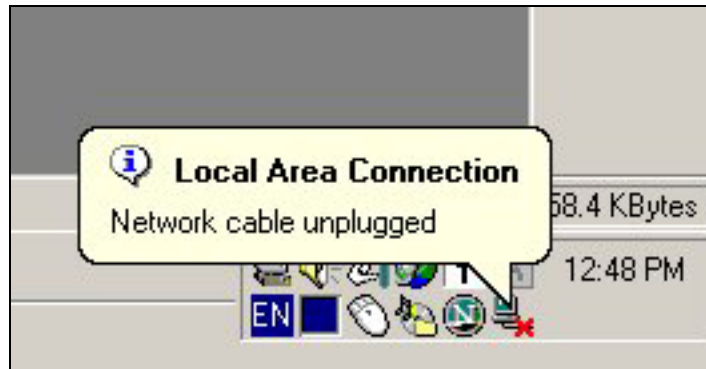
This indicated that the network card in your machine is plugged in and active. As network traffic passes between your machine and the rest of the network you should see the screen of these computers flash to indicate activity. If you place your mouse over the icon you should see details about your connection like so :



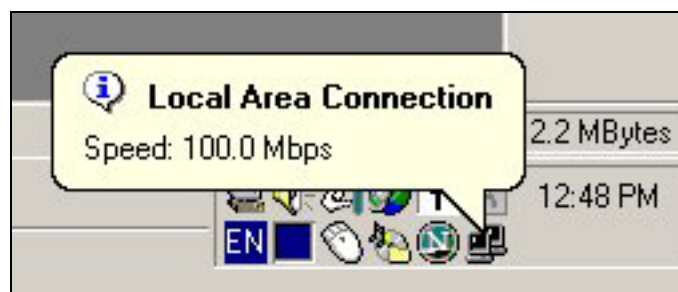
If the connection between your computer and the network is interrupted the two icon will appear with a red cross through it like so :



If you are experiencing intermittent connection issues then you actually see the point at which the disconnection happens. When this happens a message will appear on your screen like so :

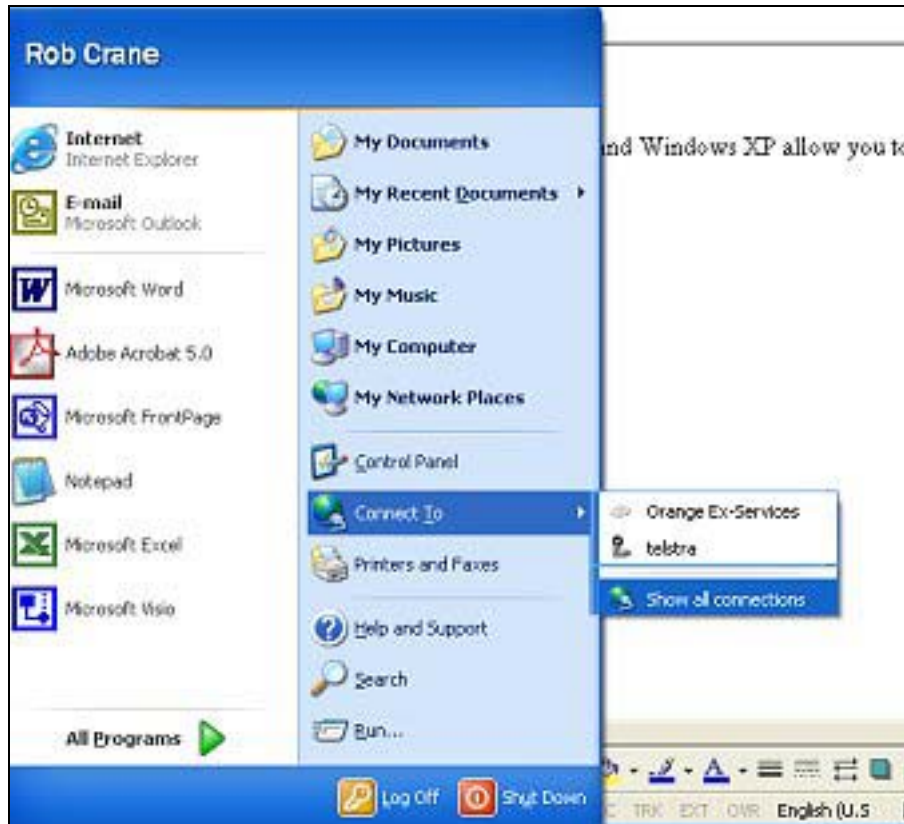


When the connection is re-established then you will also see a message like :



Enabling / Disabling

Windows 2000 and Windows XP allow you to disable and re-enable network connections. To access these connections with Windows XP you go "Start", then "Connect to" then "Show all connections", like so :



Once you have selected network connection you should see a connector under the heading of “LAN or High-Speed Internet” like so :



To enable or disable this connection simply right mouse click on the icon and select Enable or Disable. Remember with the connector disabled you will not be able to connect to a local area network.