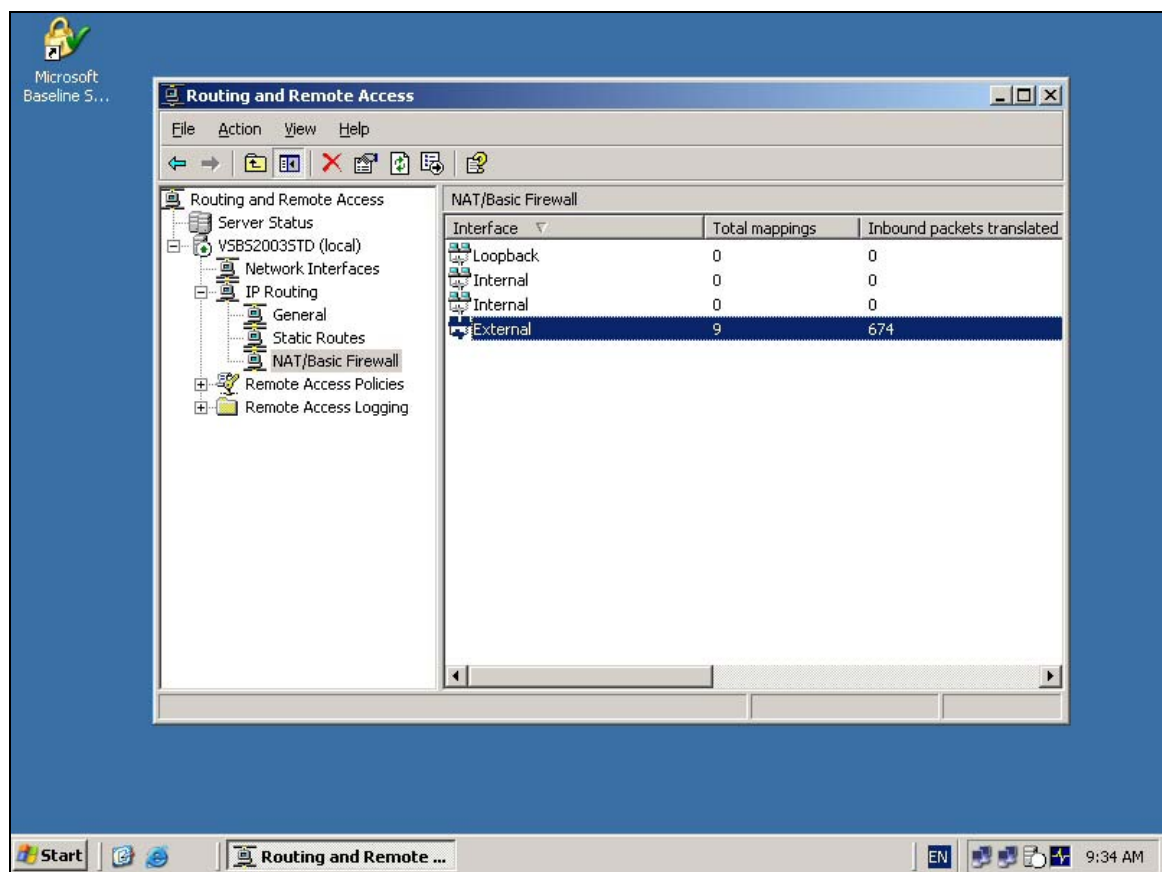


Filtering connections with SBS 2003 Standard V 1.00

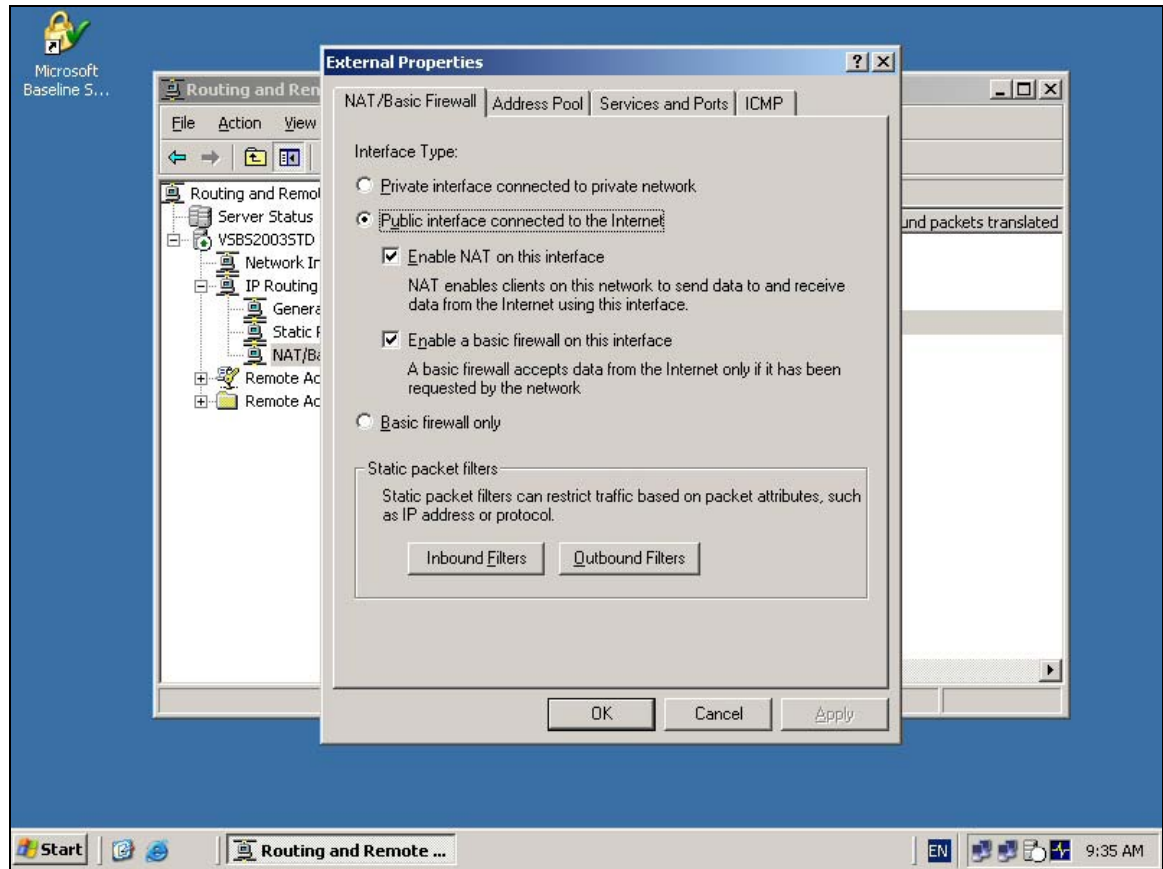
You can use SBS 2003 standard to filter connections from the external interface. This could be handy if you want to block certain IP addresses from even attaching to the SBS Server This document will take you through the process.

Note this document applies only to SBS 2003 Standard, if you are using SBS 2003 Premium you will have to do connection filtering via ISA 2004.

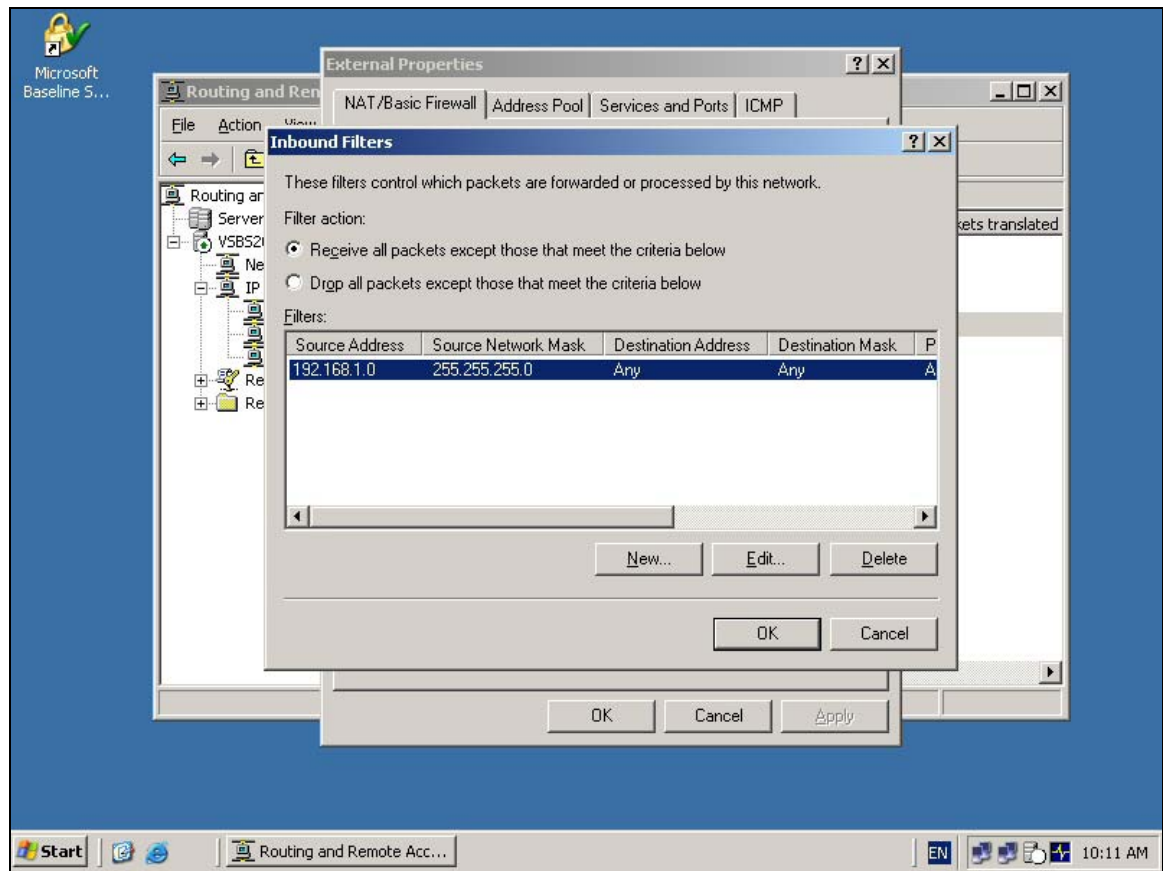
1. Determine the IP address that you wish to block.
2. Select *Start | Administrative Tools | Routing and Remote Access*
3. Expand the *server name*, then *IP routing*, then *NAT/Basic Firewall*.



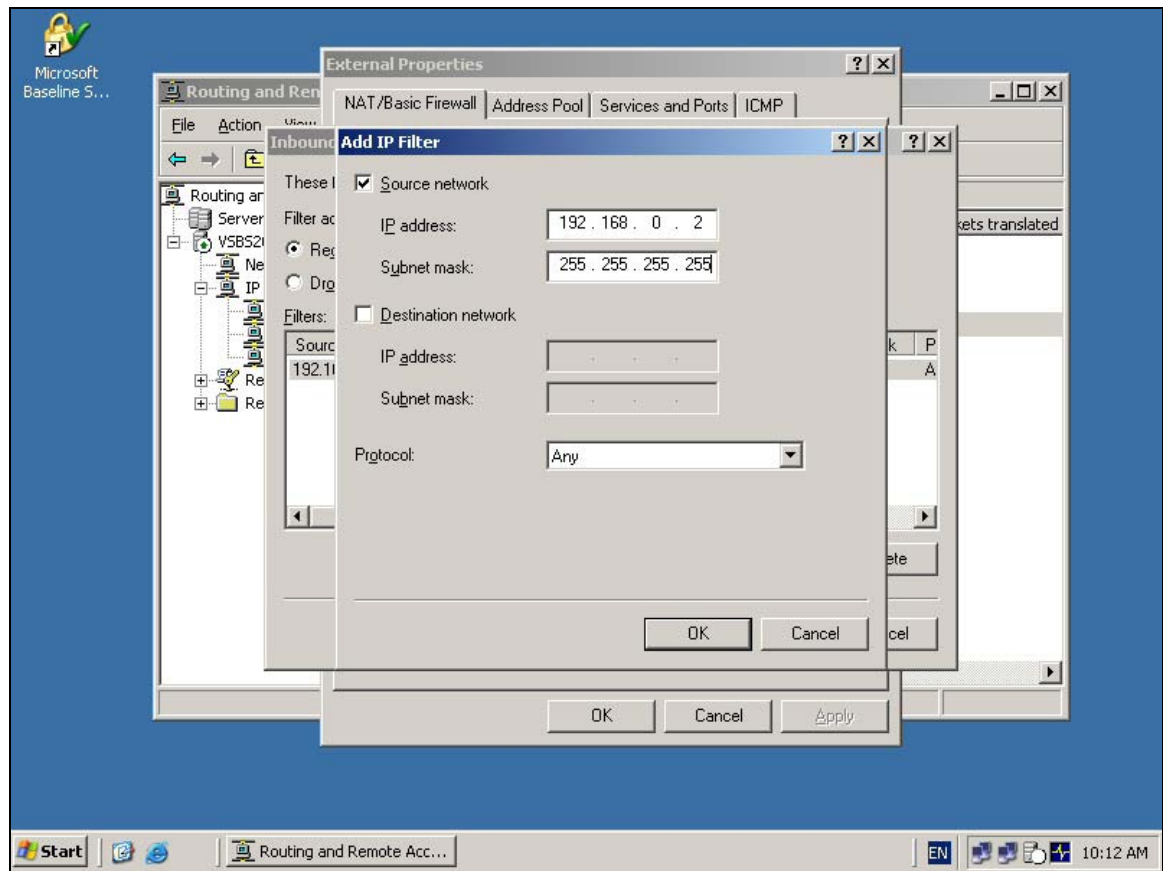
4. *Right mouse click* on the *External network adapter* and select *Properties*.
5. You should see the Network Connection Properties pages like so :



6. Select the *Inbound Filters* button. You should now see :



7. Click on the *New* button to bring up the *Add IP Filter* screen like so :



8. Enter the IP address that you wish to block. You can enter a subnet mask to specify a range of machines or just a single machine (use the mask 255.255.255.255 for a single machine).
9. You could also choose to restrict via protocol but it is probably simpler just to block any protocol from the desired IP address. Click OK when complete.