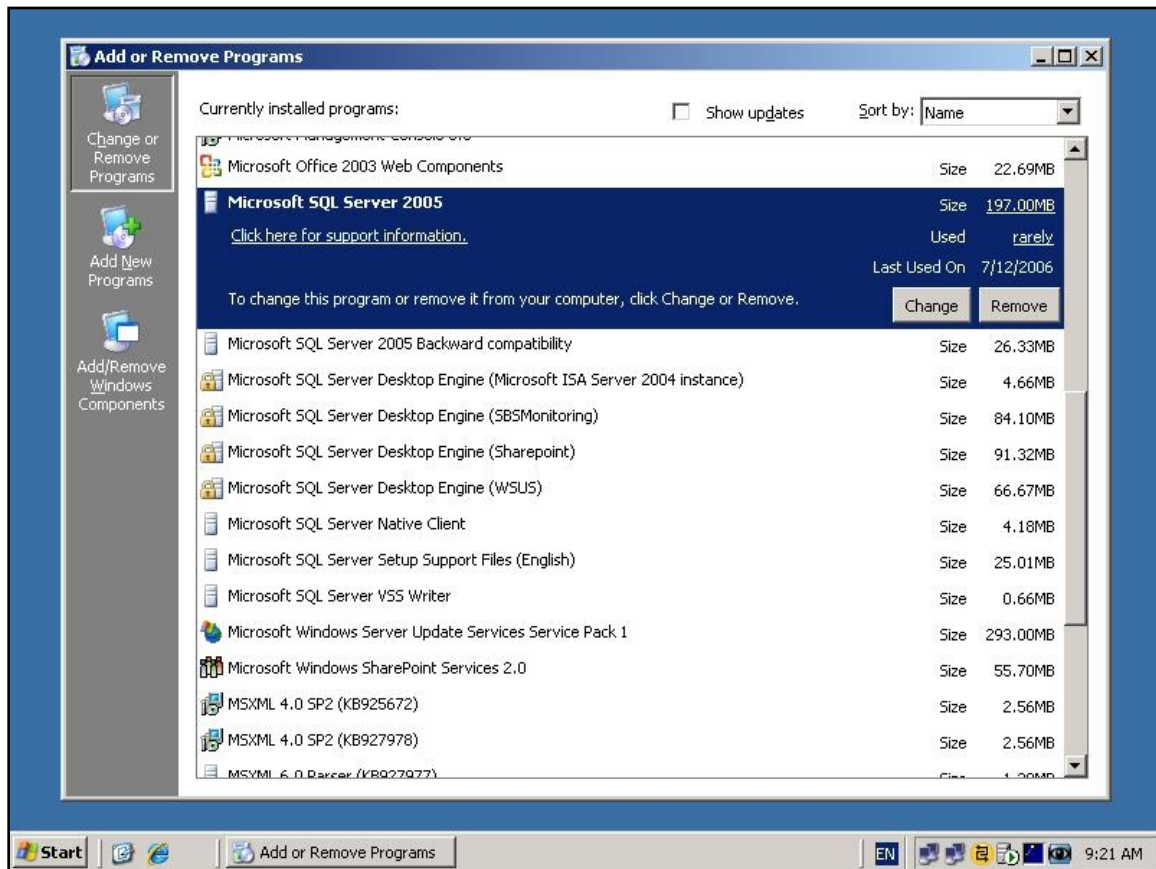


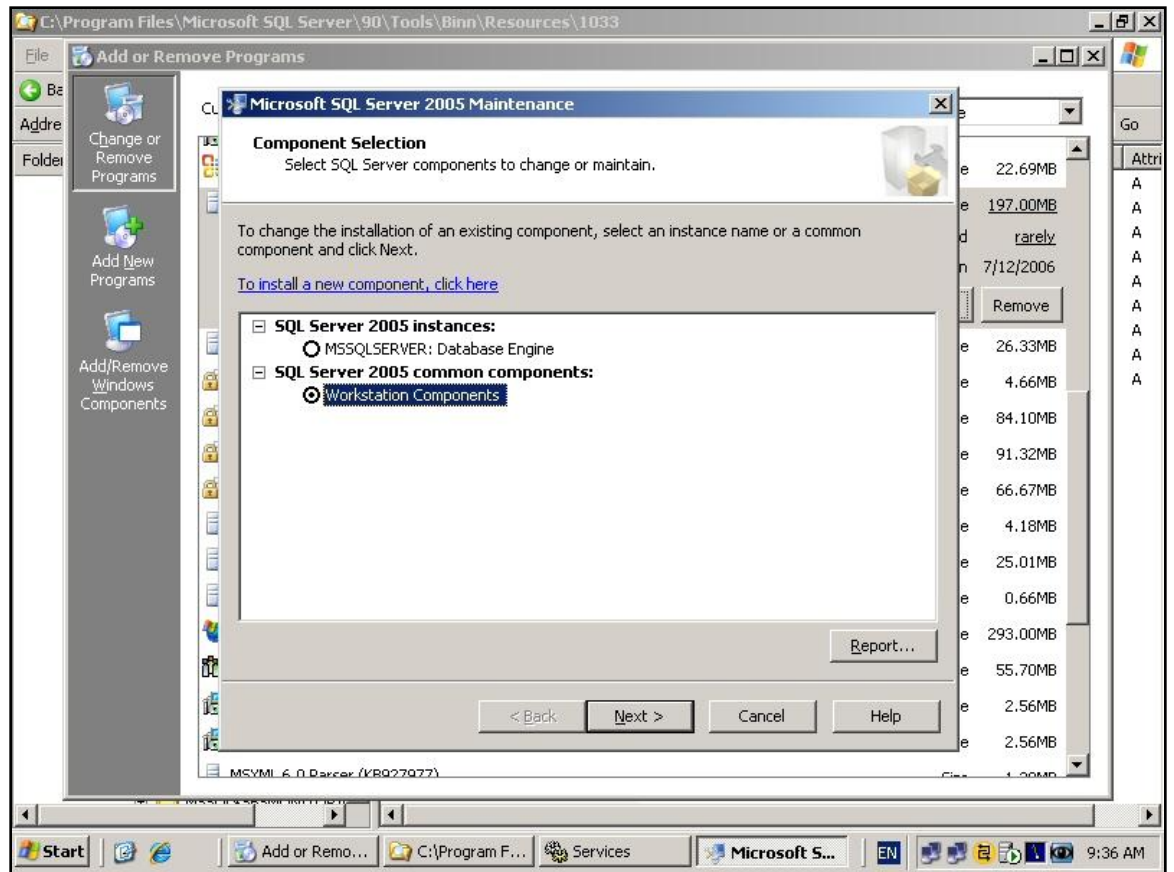
Installing SQL 2005 tools Version 1.00

By default on SBS 2005 Premium R2 the SQL 2005 tools are not installed. They either need to be selected during the installation or installed afterwards. This document will take you through the process of adding the management tools to an existing version of SQL 2005 installed on SBS 2003.

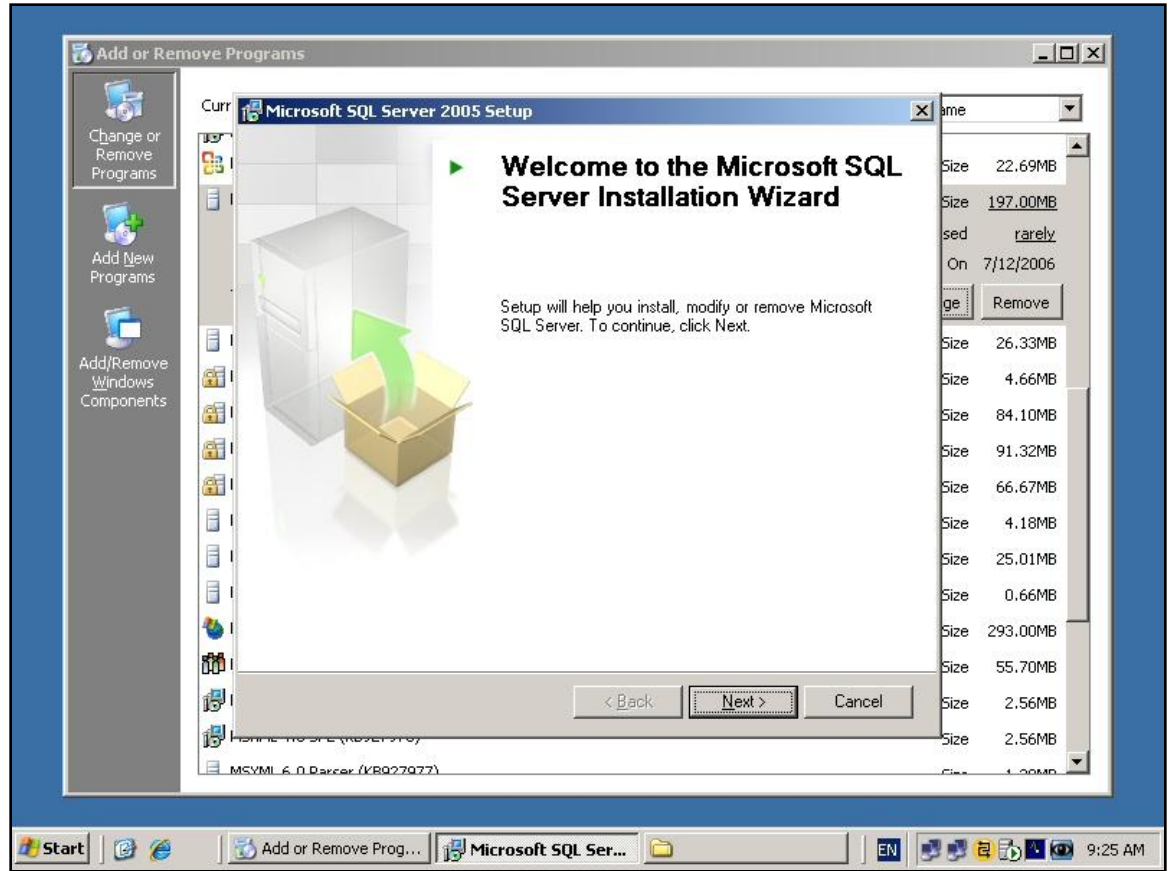
1. On the server console select *Start / Control Panel / Add and Remove programs*.



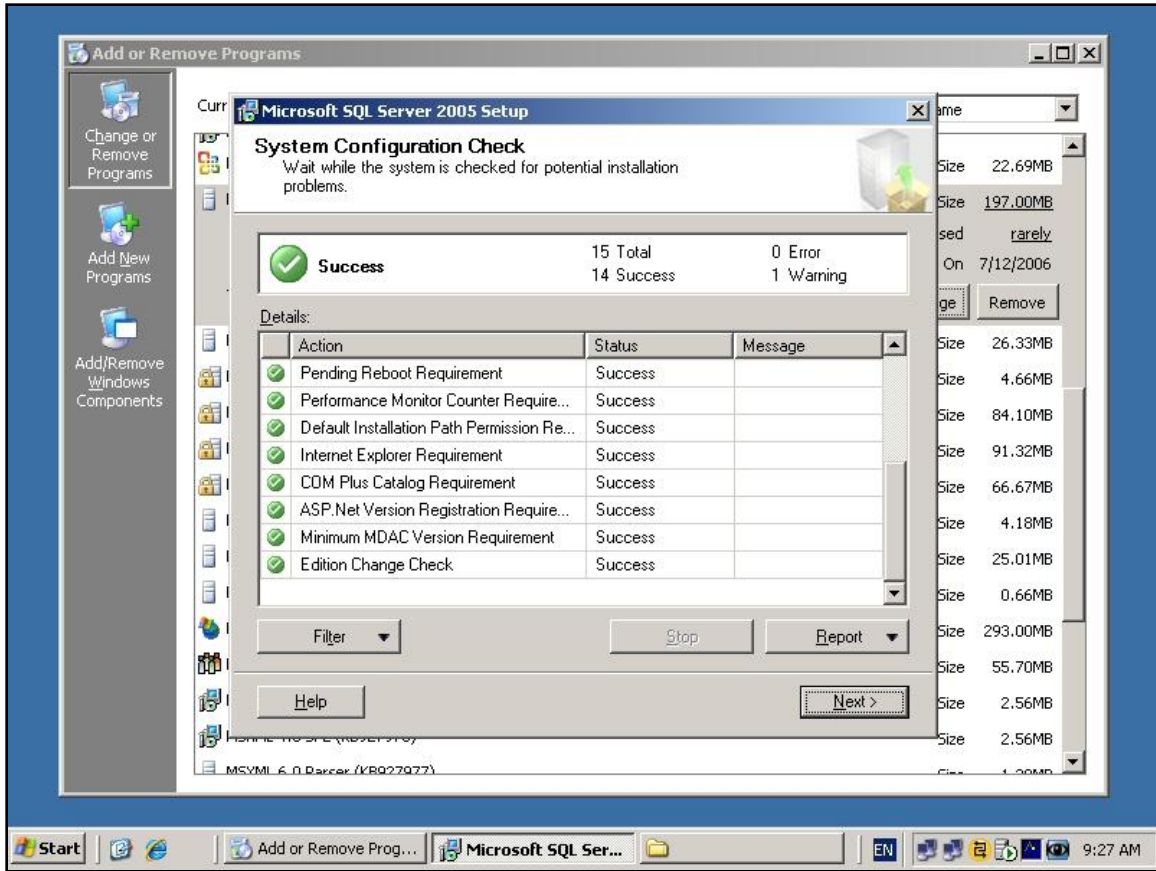
2. Locate the line entry *Microsoft SQL Server 2005* and select the *Change* button.



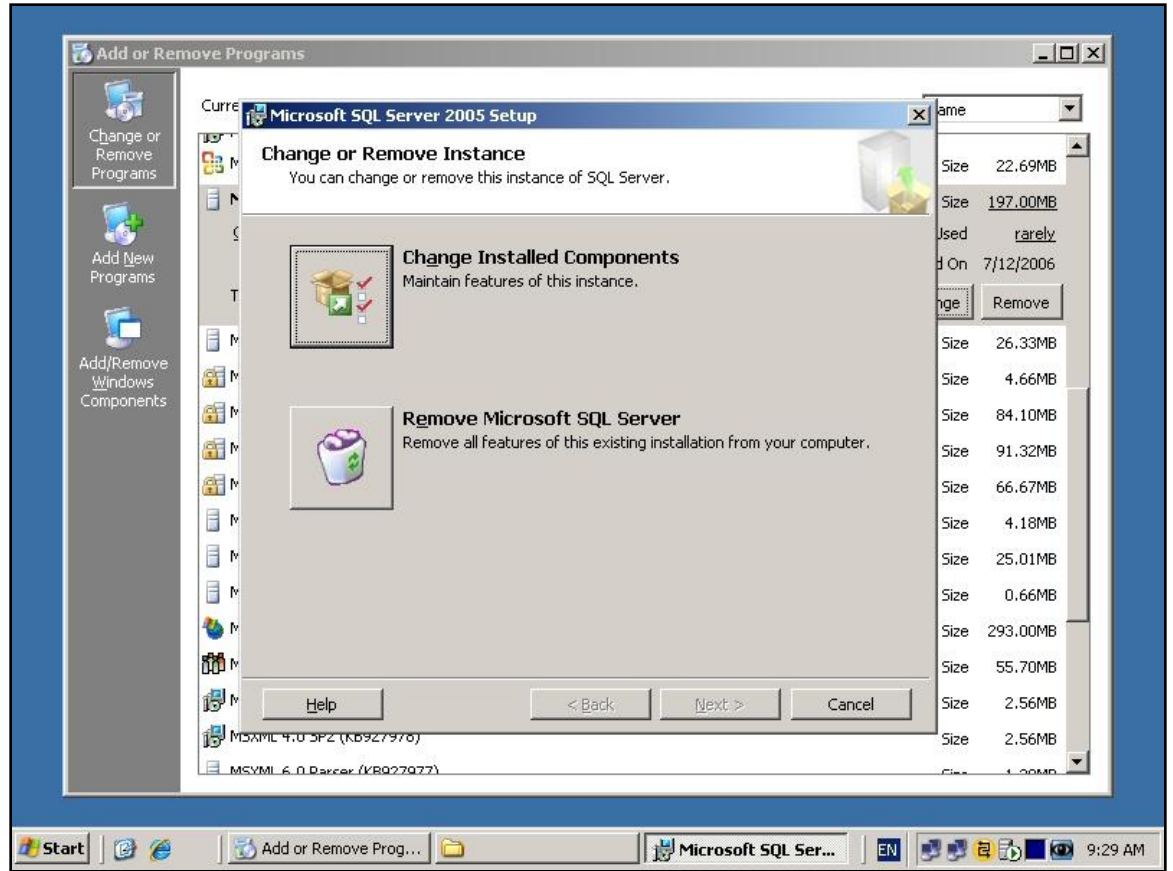
3. At the next screen select *Workstation Components* under *SQL Server 2005 common components* and press the *Next* button.



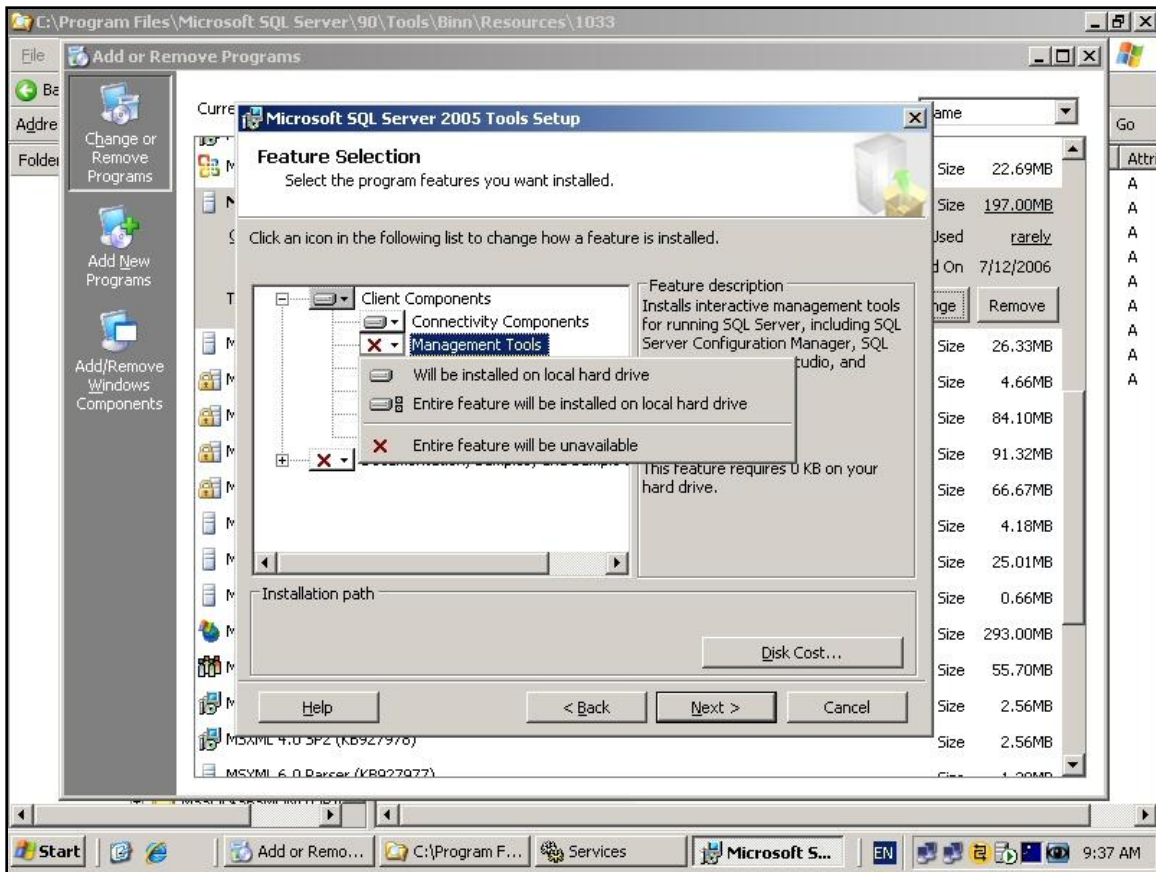
4. Press the *Next* button on the Welcome Screen.



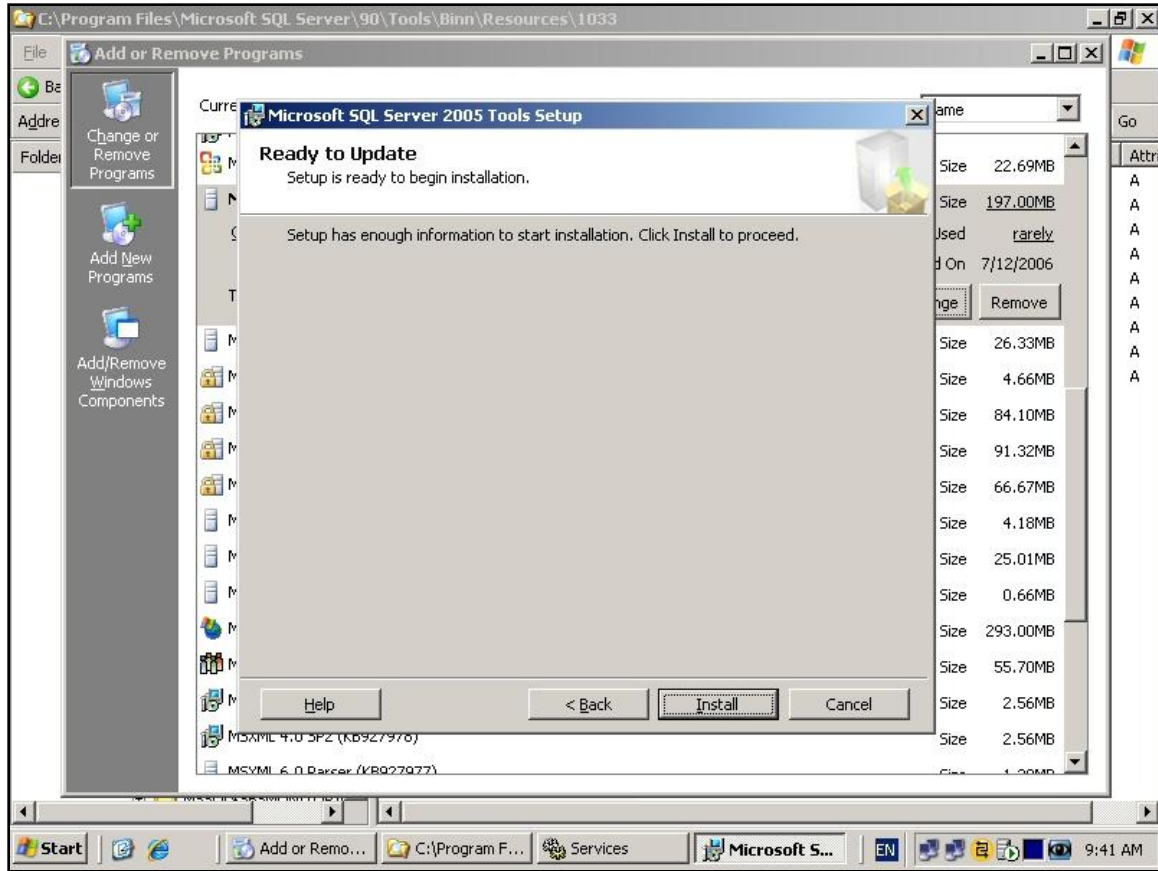
5. The system configuration check will now run. At completion press the *Next* button to continue.



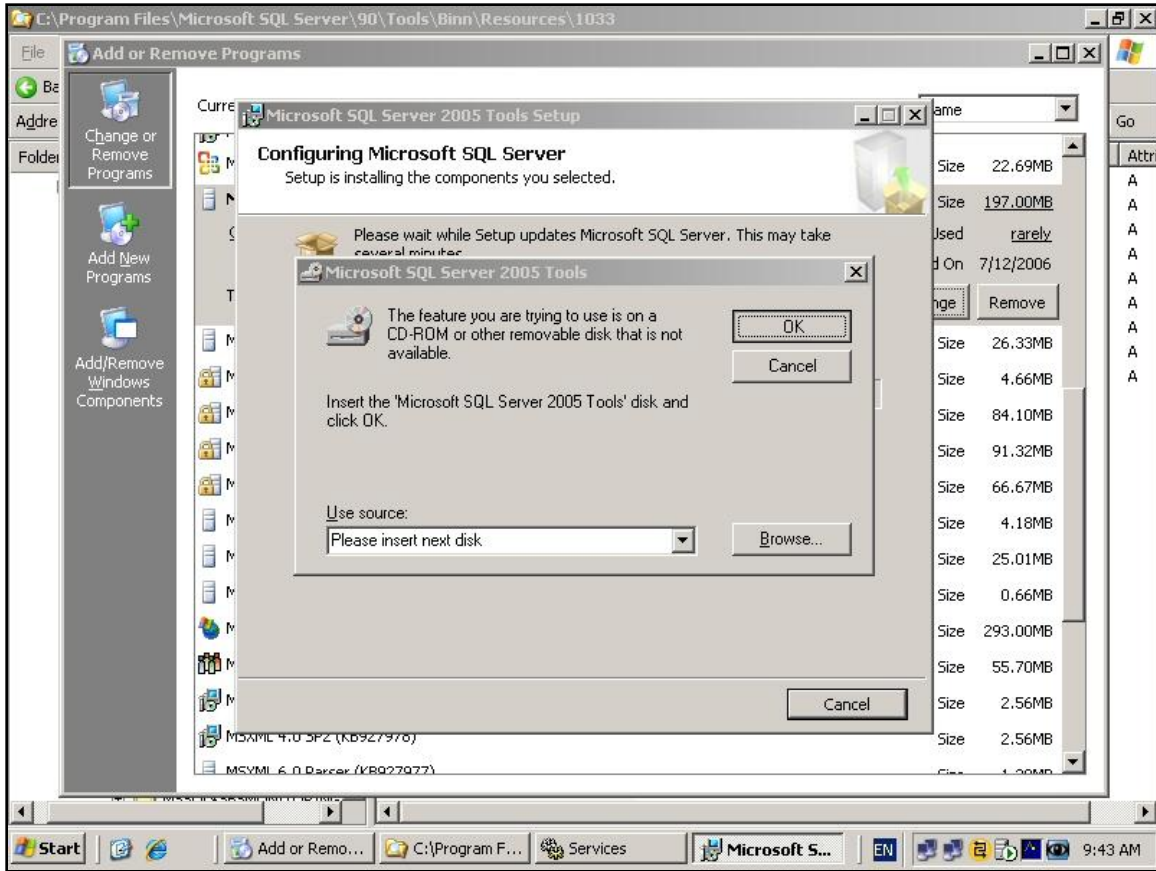
6. Select the *Change installed Components* to continue.



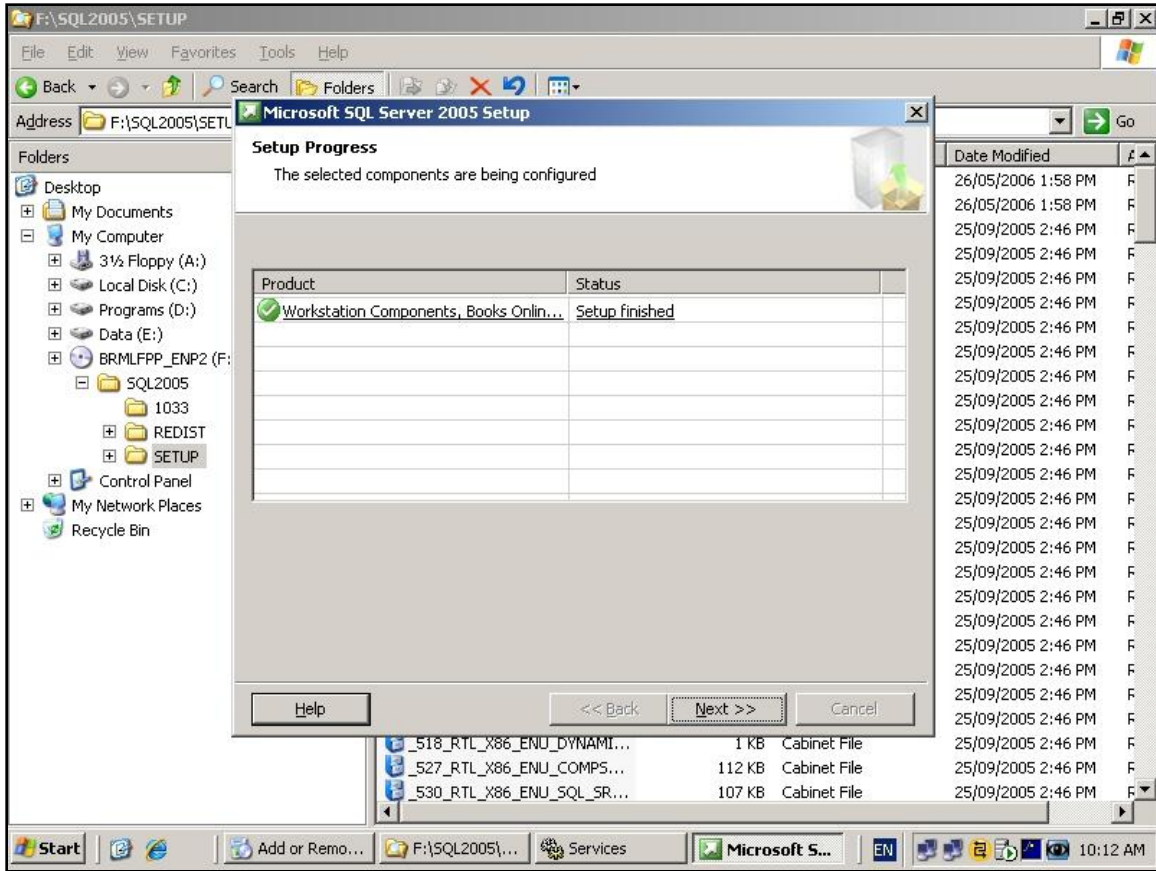
7. Pull down the *Management Tools* and select *Will be installed on local hard disk*. Press the *Next* button to continue.



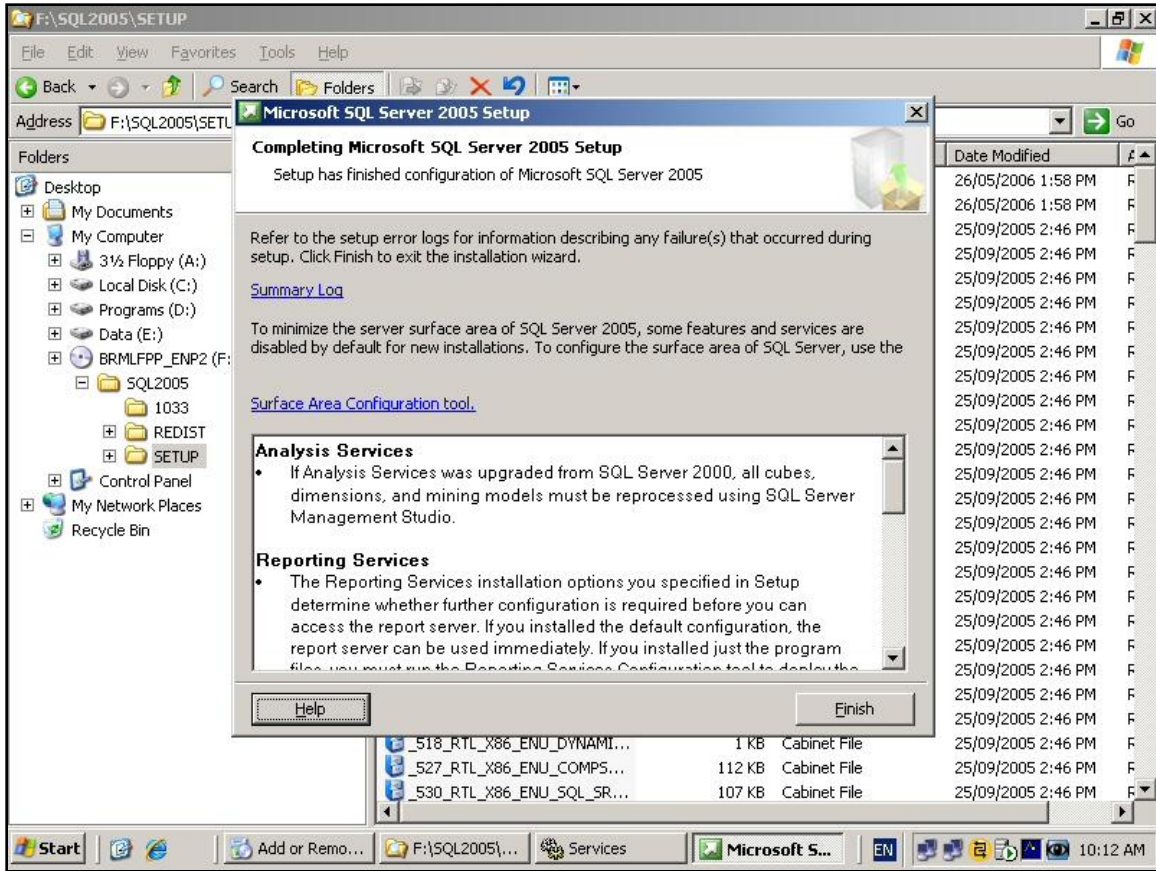
8. Press *Install* to commence the installation.



9. The SBS 2003 R2 Premium Technologies CD 2 is required for the appropriate files to be installed. Ensure that this is in the CD-ROM drive and press *OK* to continue.



10. Once the files have been copied, press the *Next* button to continue.



11. Press Finish to complete the installation process.