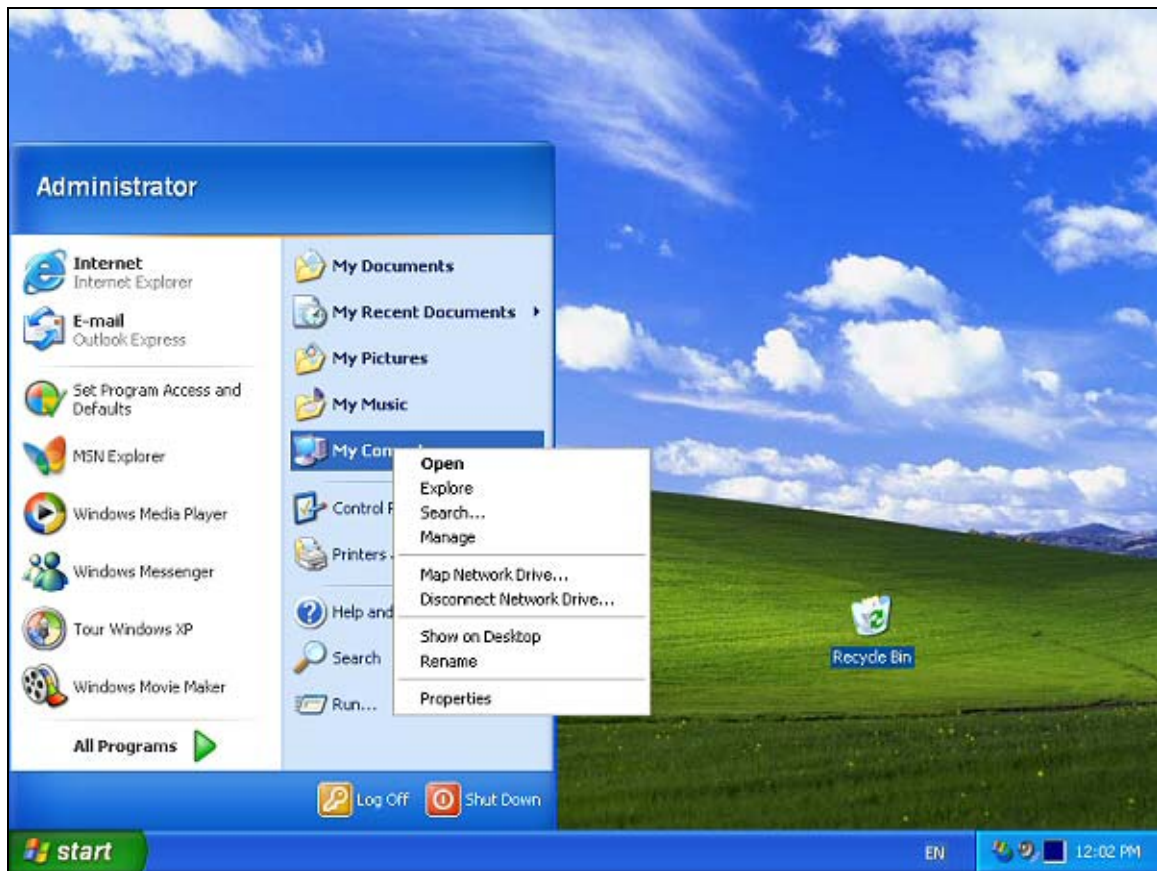


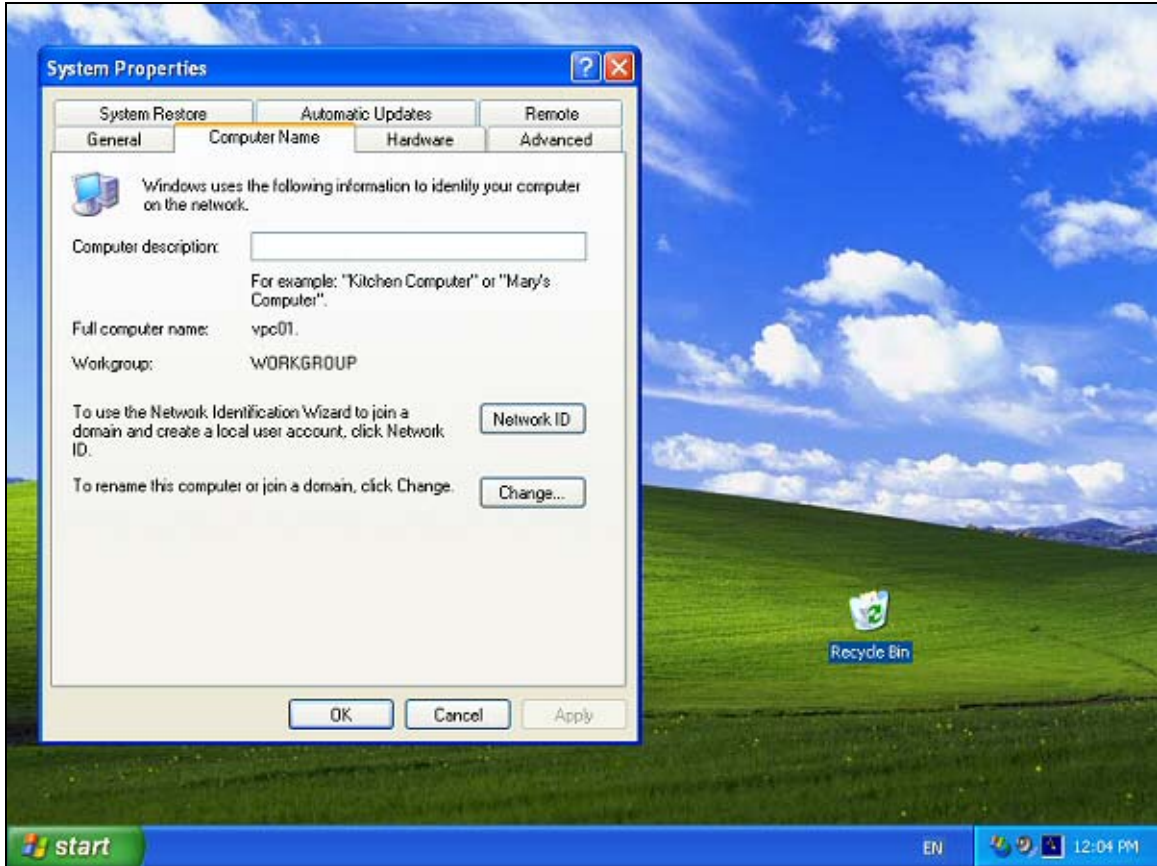
Joining an XP workstation to a domain Version 1.00

All Windows XP Professional workstations need to be joined to a domain to function as part of the domain security environment.

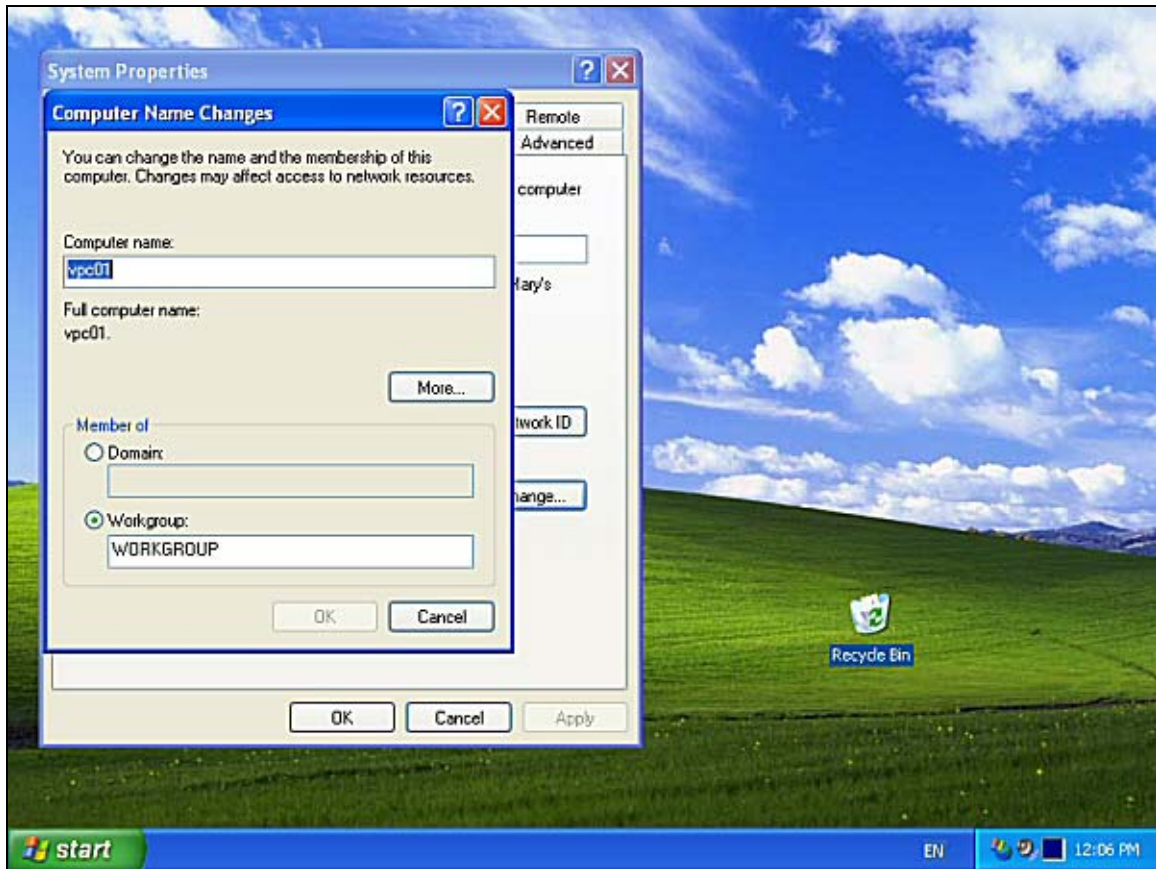
1. To join a new XP Professional workstation to a domain power up the workstation and log on as the local administrator.
2. Once logged on select Start.
3. Right mouse click on My Computer and from the menu that appears select properties.



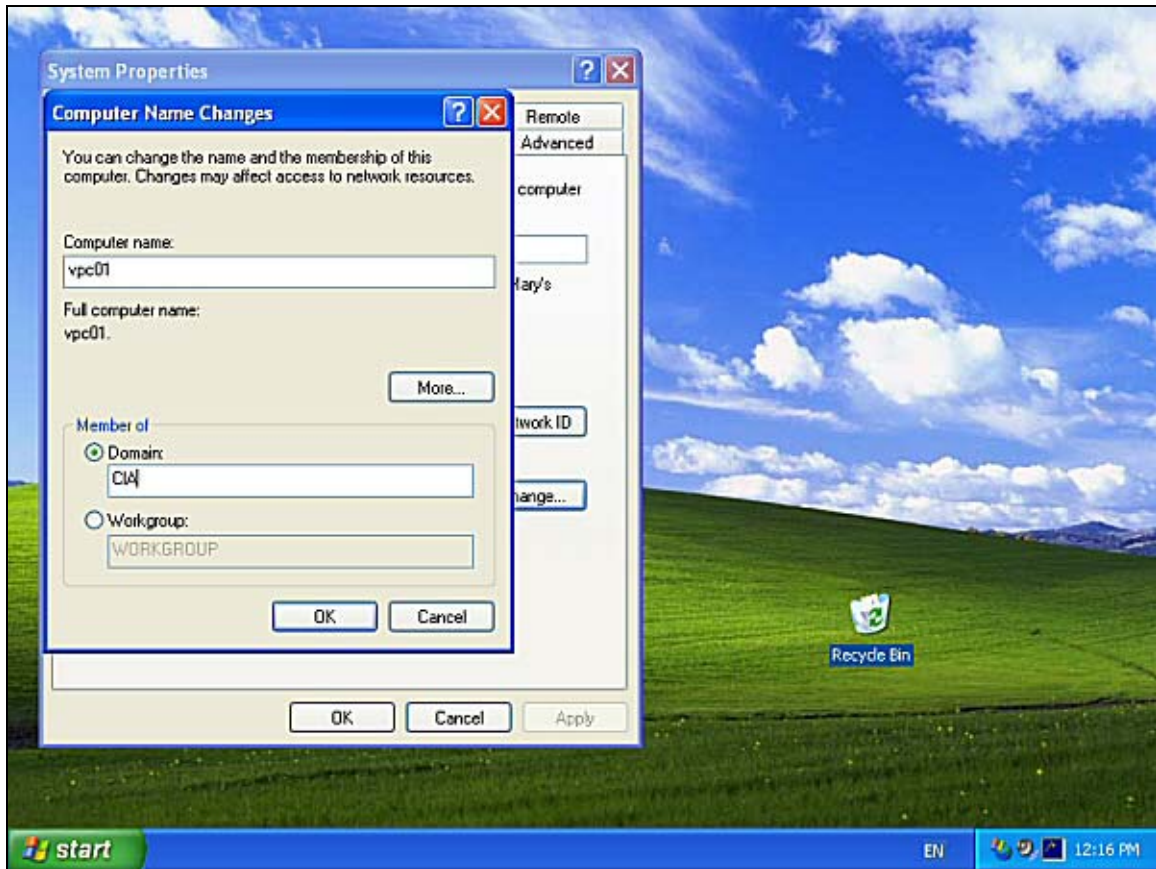
4. Select the *Computer name* tab.



5. Select the *Change* button to bring up the Computer Name changes window.

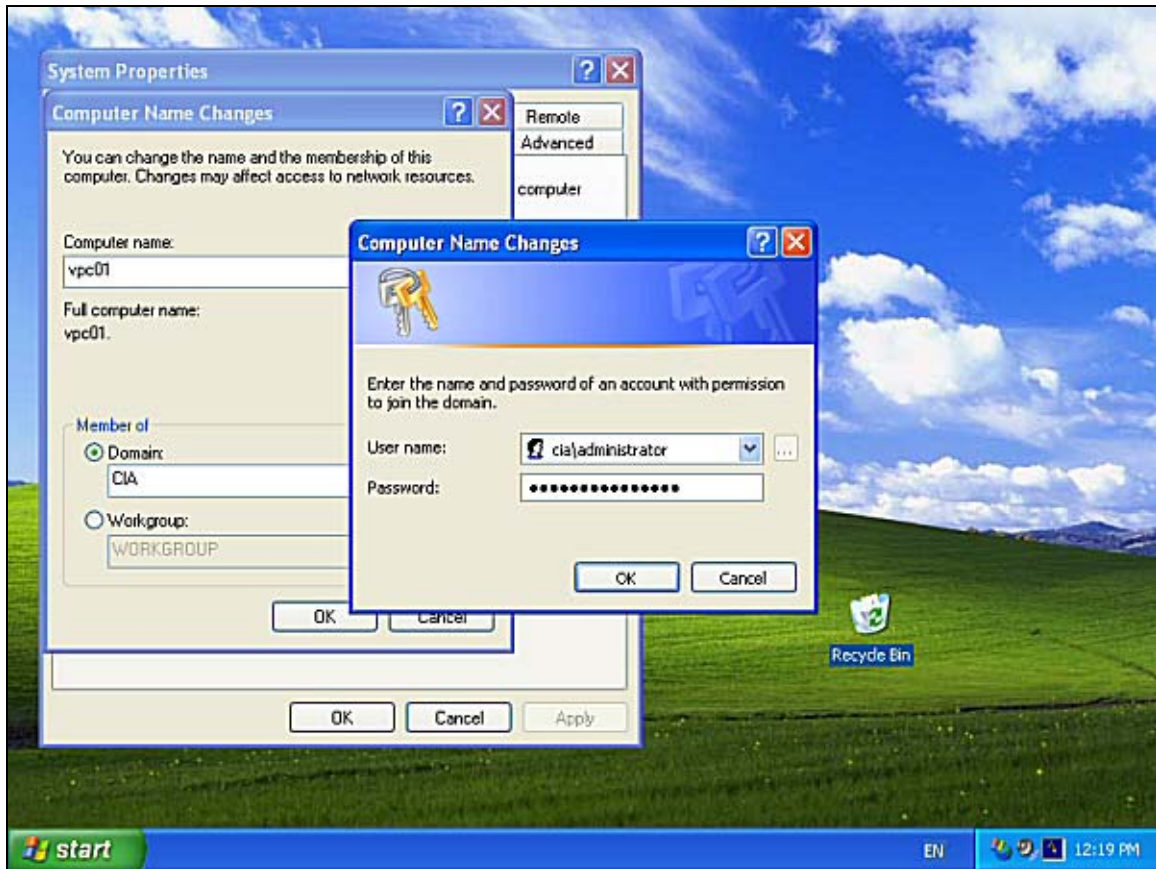


6. From here you can change the computer name as well as join a domain. Alter the computer name to suit and then select the domain option and enter the name of the domain that you wish to join like so :

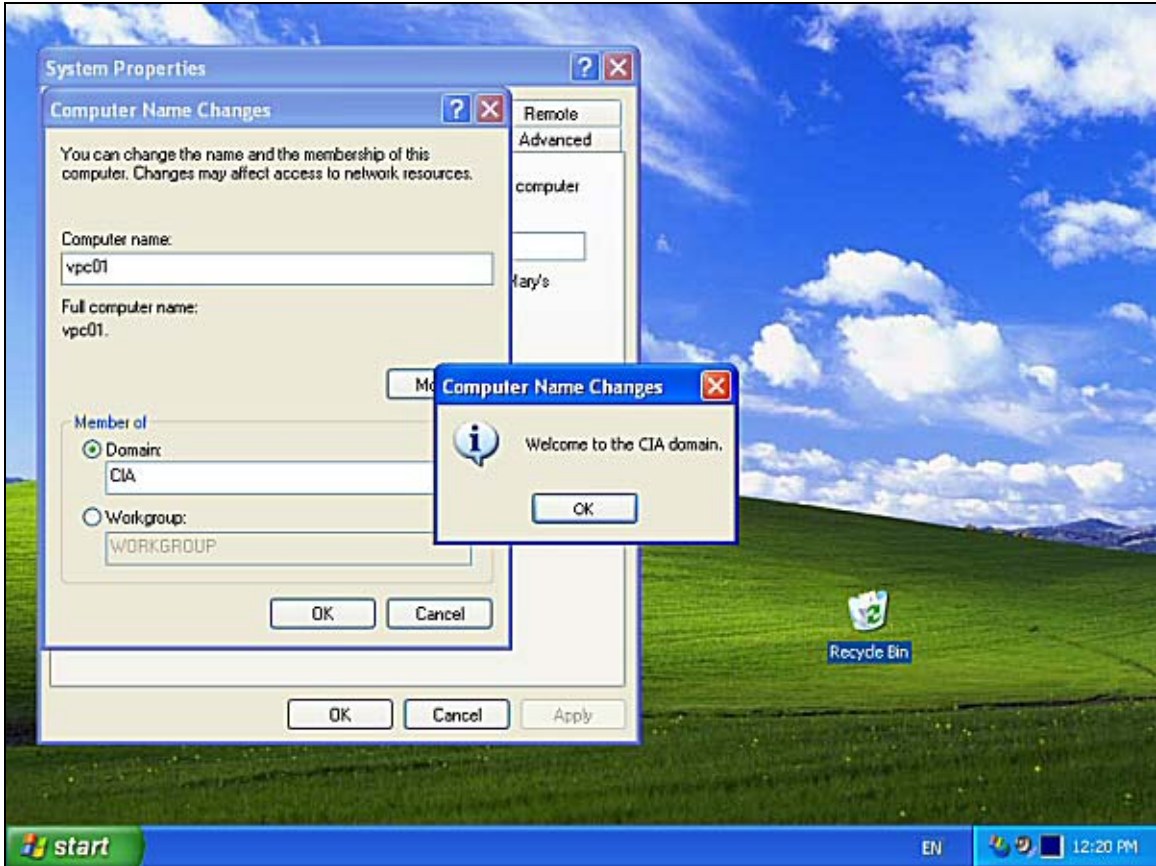


Select the *OK* button to continue.

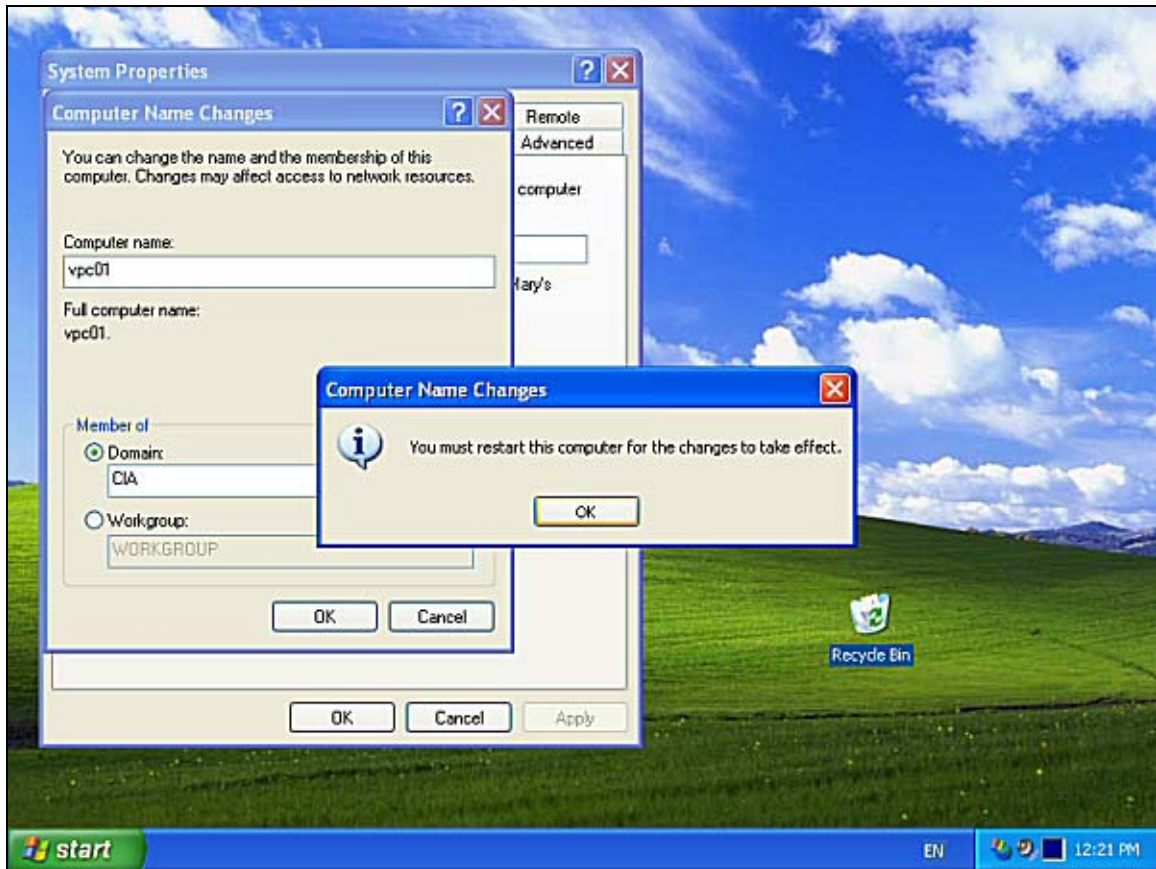
7. When you request to join a domain you will be prompted to enter a user and password for an existing network user that has permissions to allow machines to join the domain. In most cases this will be the administrator. Enter these details in the window that appears like so (not that you may need to the login as domain\user as shown below) :



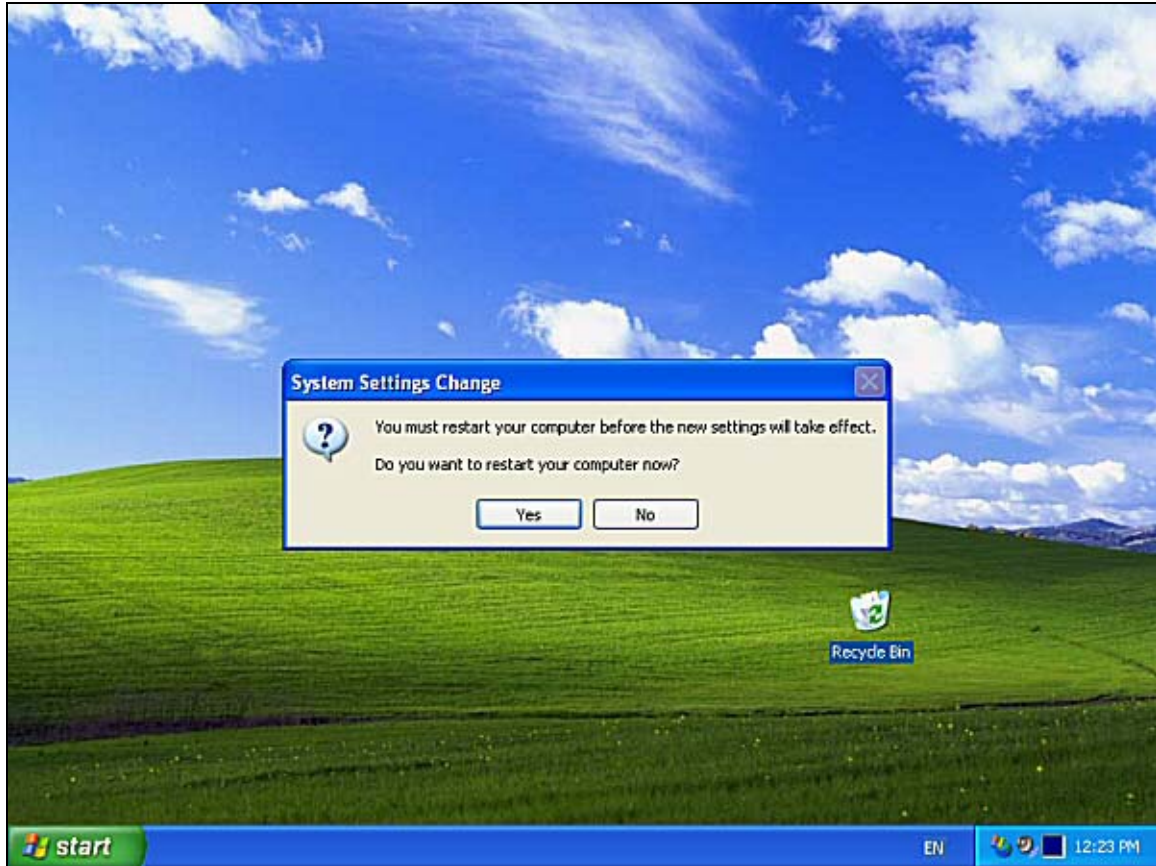
8. If the machine has been successfully added to the domain you should a message like so welcoming you to the domain :



9. Once you press the OK button you will be informed that you need to reboot for the changes to take effect.



10. Press *OK* again and *OK* to exit the System properties. You will now be prompted to restart you computer. Press the *OK* button to do this.



11. Once the PC has restarted you need to log into the machine as a network administrator and set up user rights so that user can install software onto the machine. Once the PC has booted you will see the familiar *Ctl-Alt-Del* message asking you to login. Once you enter *Ctl-Alt-Del* you will be prompted to enter the username and password. Make sure that you have set the *Log on to* to be the domain rather than the local PC. If the location field isn't shown select the options button to display it.



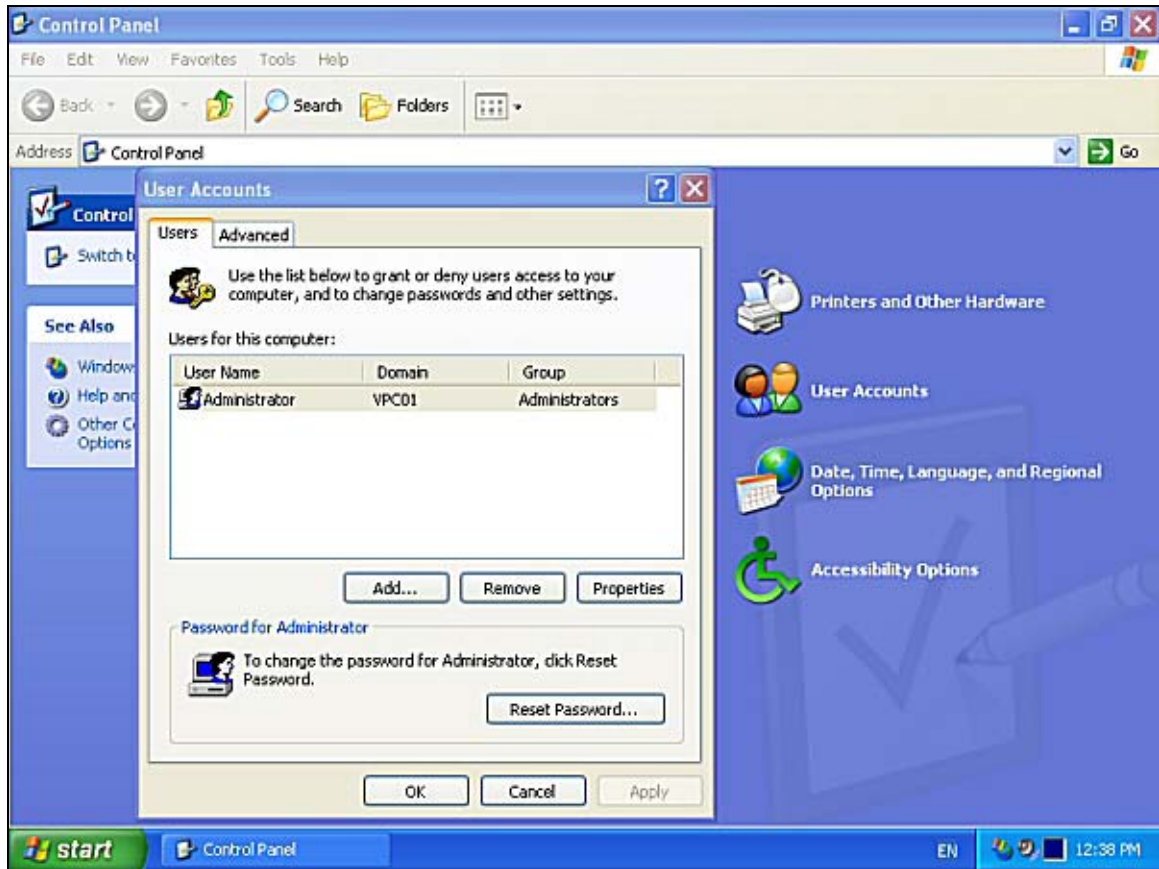
The above system doesn't show the *Log on to* field. To display it select the *Options >>* button and it will be displayed like so :



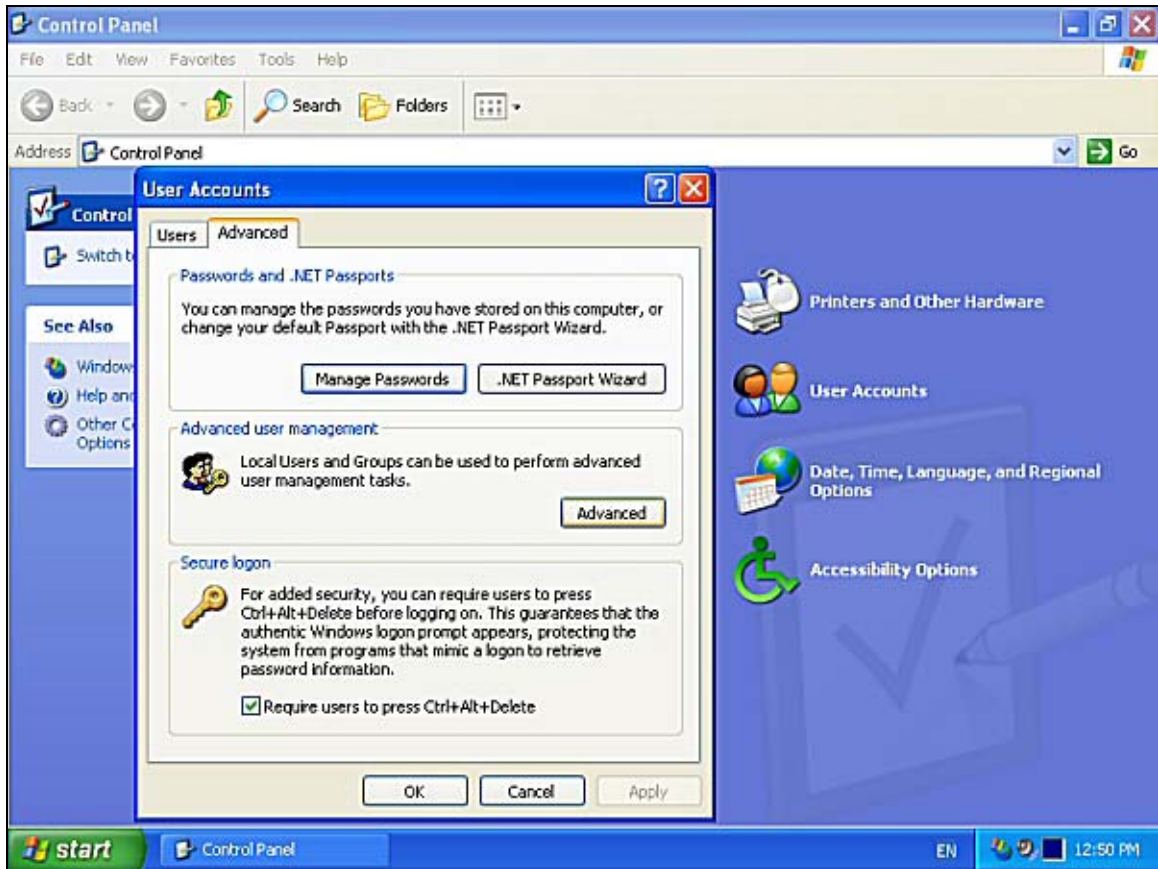
You can select the domain if it doesn't appear by using the pull down arrow that is the right hand side of the *Log on to* field.

12. Once you have logged on as a network administrator you will need to add all domain users as administrators of the local machine. This allows network users to perform simple tasks such as loading software rather than needing a network administrator to login and do it for them.

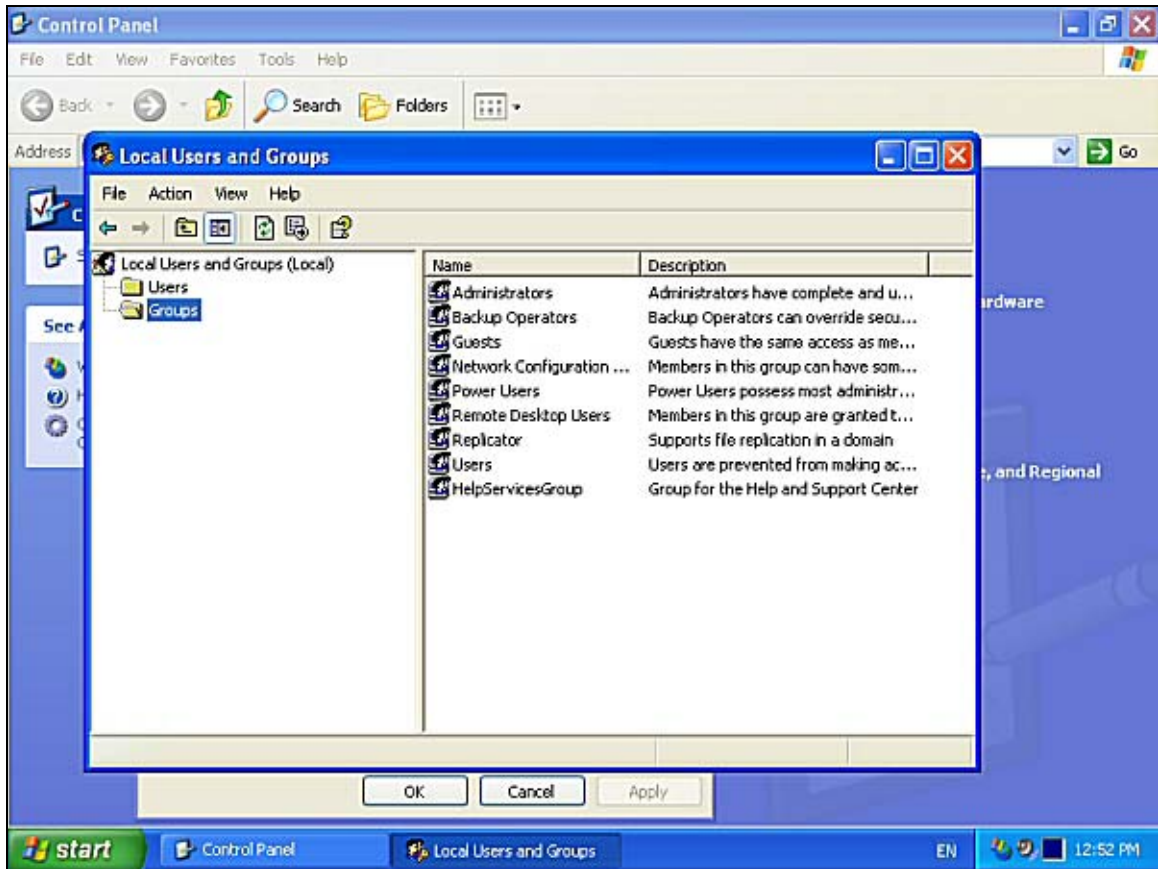
To add this ability select Start | Control Panel | User Accounts. Then select the Advanced tab.



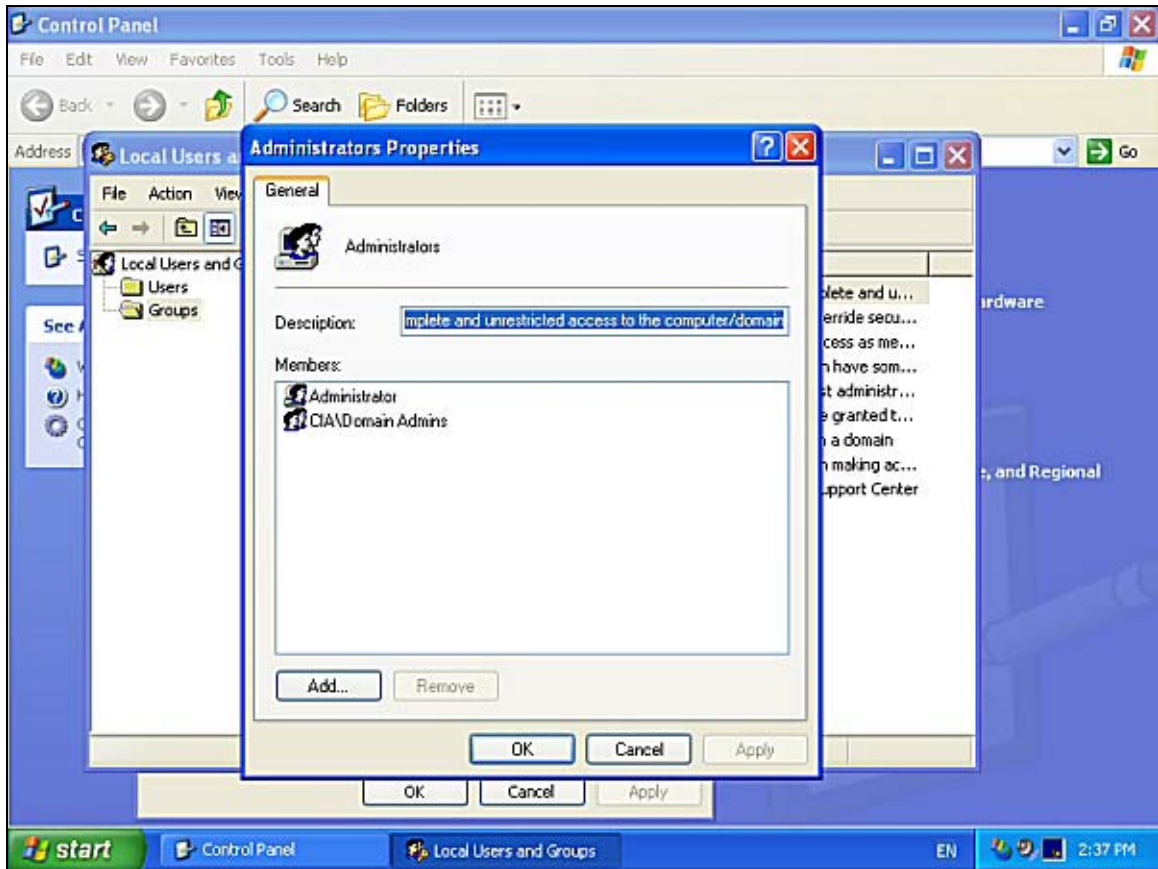
13. On the advanced tab select the advanced button that appears in the middle of the window like so :



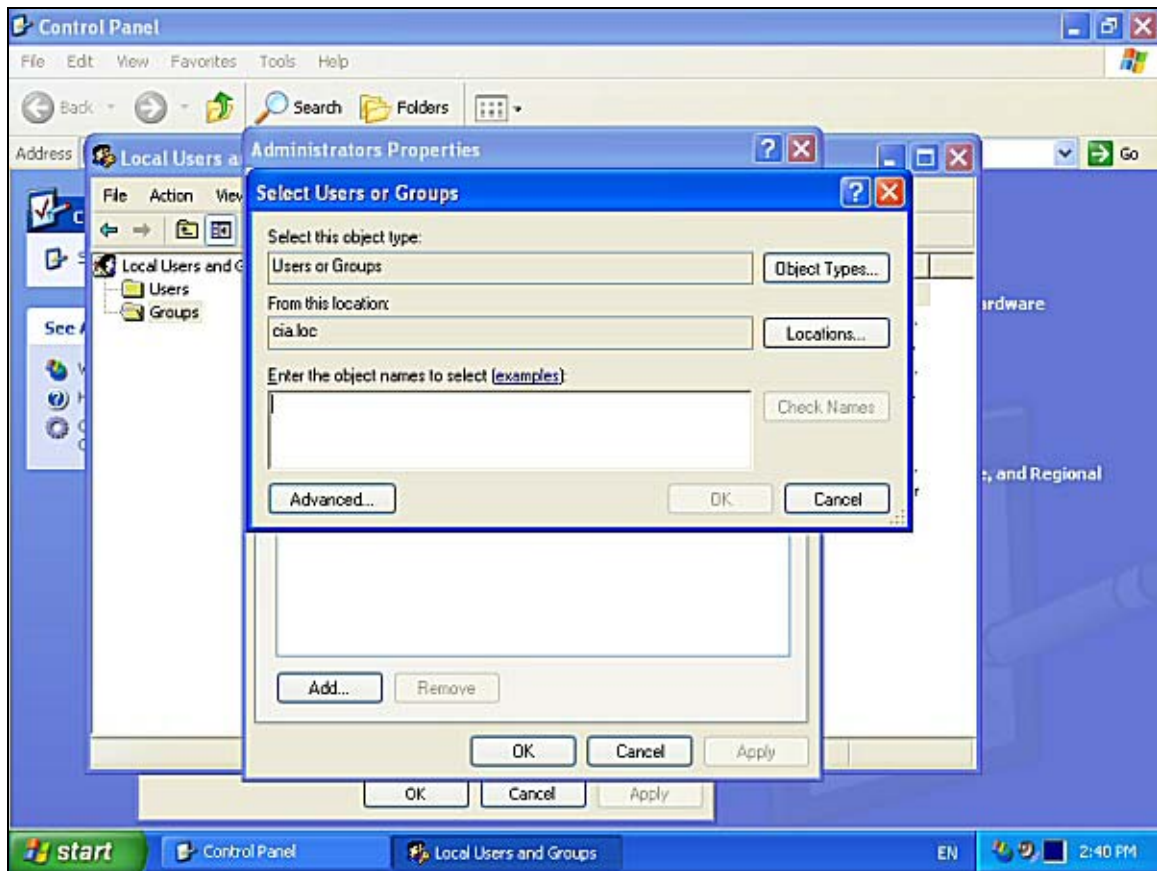
14. From the Local Users and Groups window that appears select *Groups* on the left hand side to display all the local machine groups on the right like so :



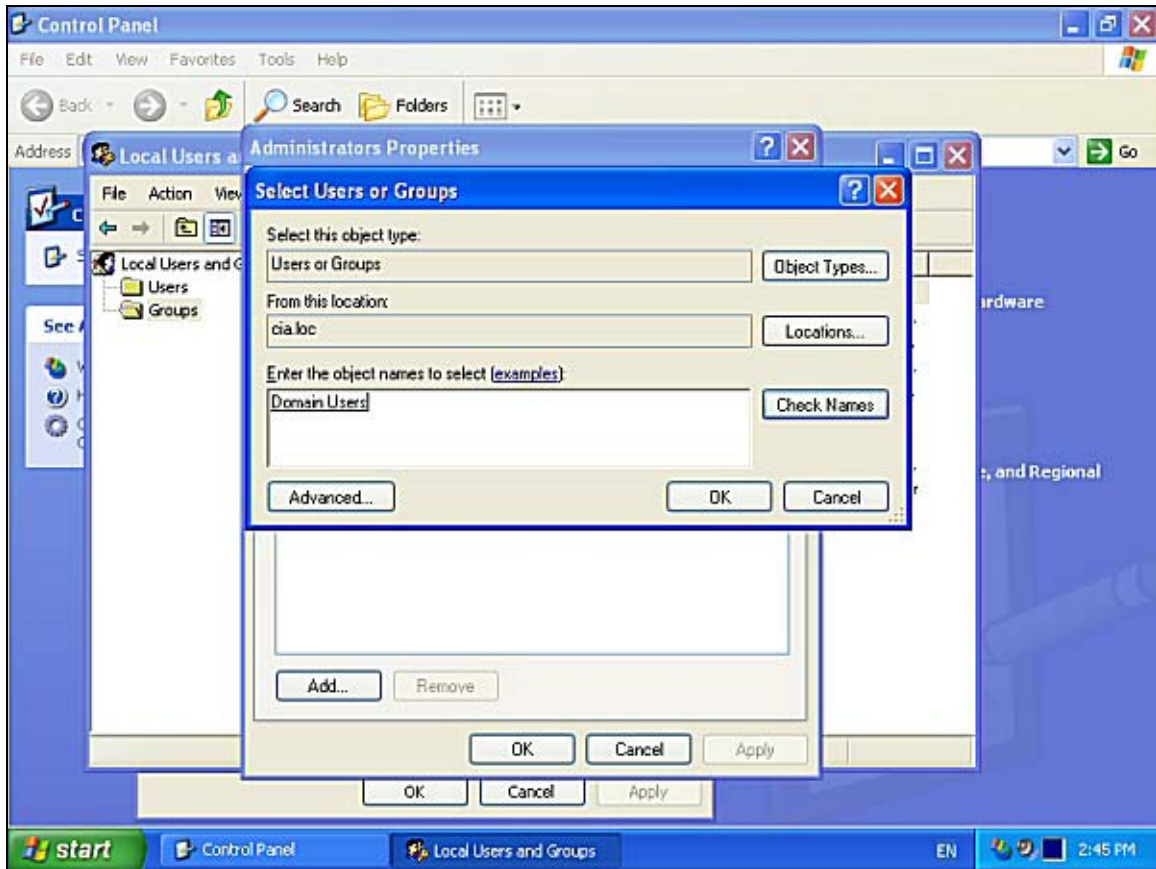
15. Now double click on *Administrators* which normally appears at the top of the list. The screen should now appear like :



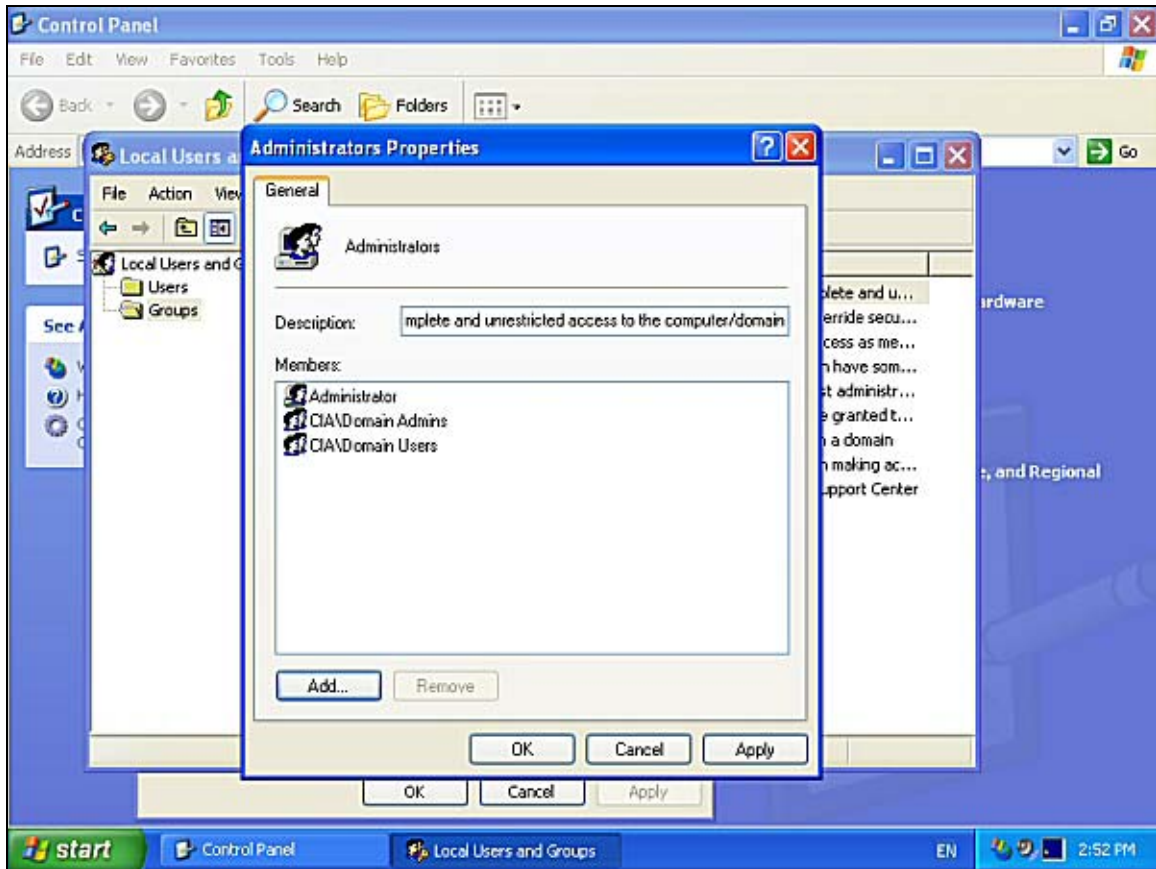
16. Click the *Add* button and the screen will now appear like :



17. Make sure that *Select this object type:* is set to *Users or Groups* and *From this location* is set to the domain name. In the bottom window enter the text *Domain Users* and then press the *Check Names* button to the right which is enabled once you enter text into this window. If everything is correct you should see the something like Domain Users. When the text is underlined it indicates that the group in the domain has been located. If not then check the above location and object settings are correct.



18. Once *Domain Users* is underlined click *OK* to close this window. The *Administrators Properties* window should now show *DOMAIN\Domain users* as shown below. This now means that all domain users who log onto this workstation will have administrator right over all resources on this workstation.



19. Click the *OK* button to return to the *Local Users and Groups* window. Close this windows via *File | Exit*. Press *OK* to close the *User Accounts Properties* window and the close the *Control Panel* window to return to the desktop.
20. You can now log off the administrator account of the workstation and log in as the user and install any software and make any changes necessary on the workstation.