

Exempting certain files from scans in eTrust Version 1.00

eTrust antivirus, unless configured otherwise, will scan all files coming into or out of a workstation. This provides the maximum level of protection on your system. In some cases this may not be suitable for applications which have large data files, typically databases. When such large files are transferred to and from the workstation they will be scanned and may cause an application to appear to be slow to respond.

You can configure eTrust in a number of different ways to exclude what files and directories are scanned. This document will assist you in making those configuration changes.

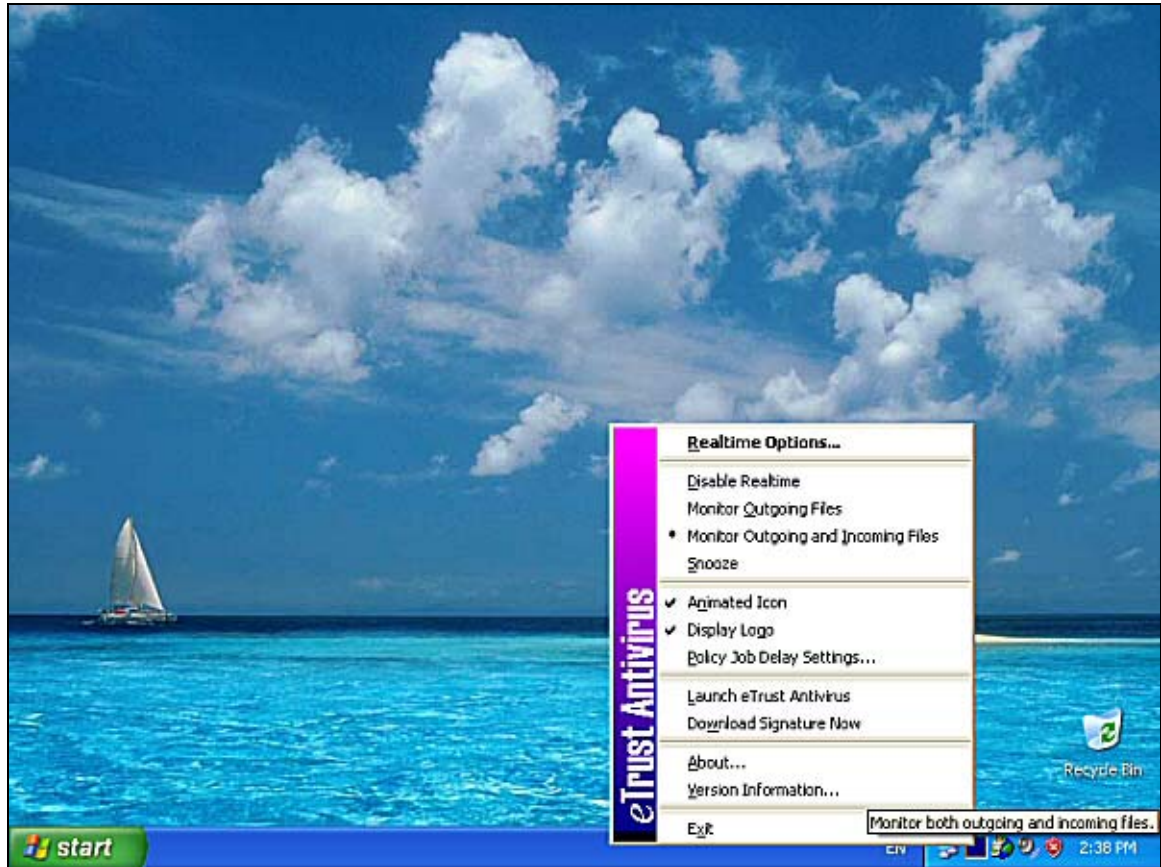
Opening E-Trust on the Workstation

To make changes to eTrust on a workstation you firstly need to open the E-Trust application.

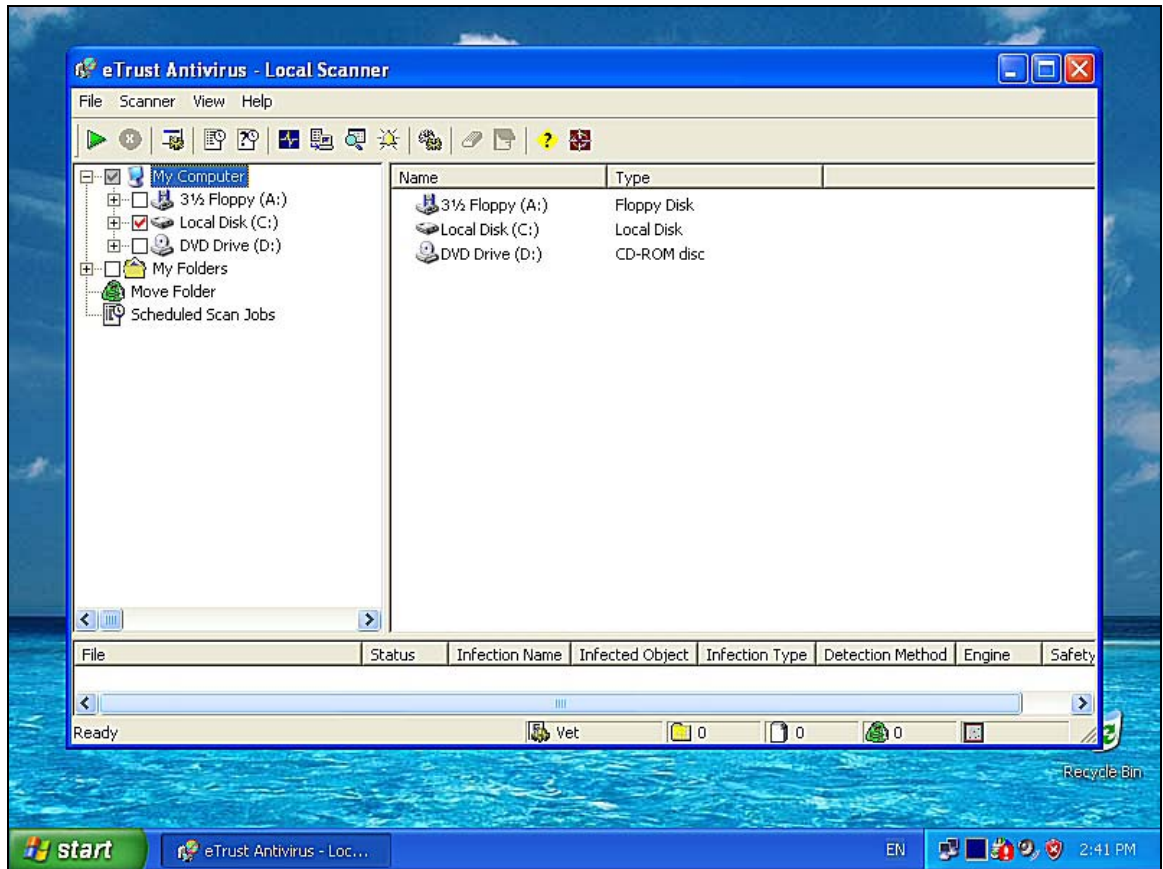
1. Login into the workstation press the **Start** button like so and select **All Programs**, then **Computer Associates**, **Etrust Antivirus**, **Etrust Antivirus** like so:



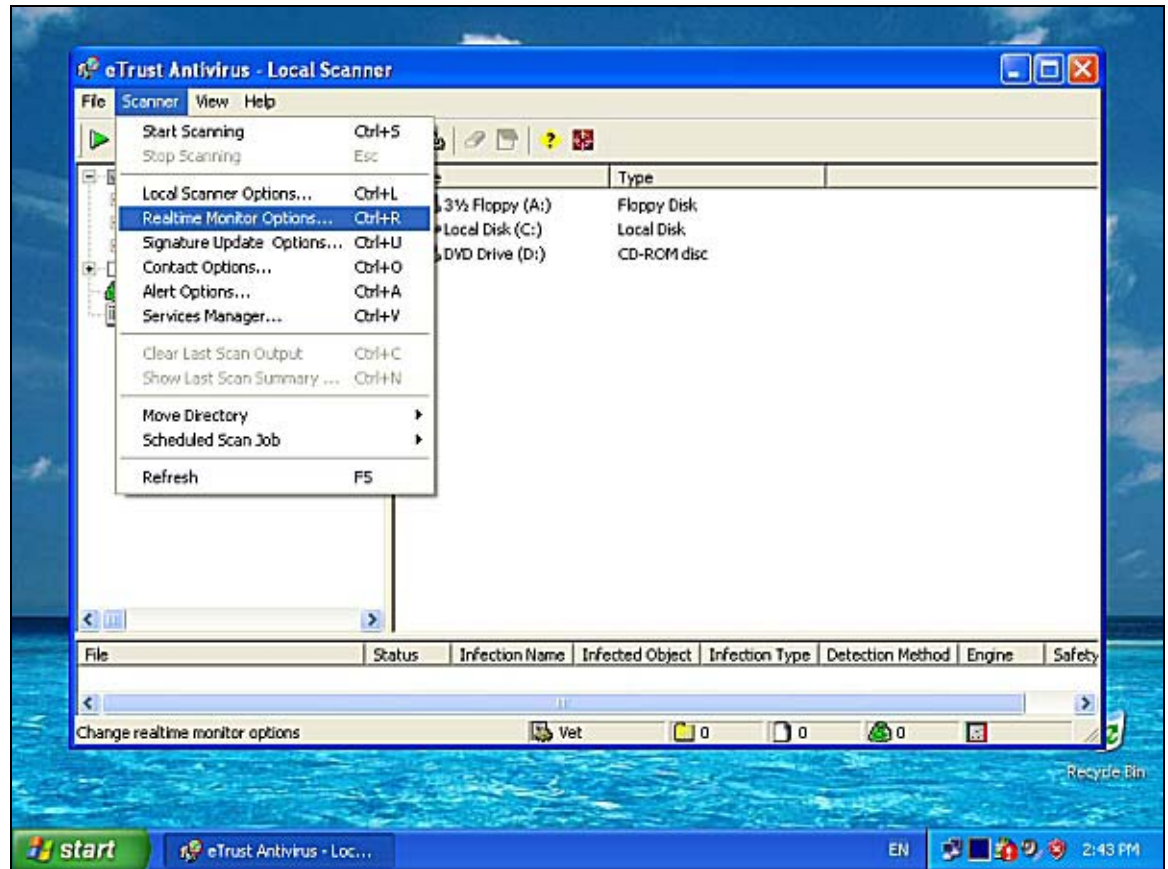
- Alternatively, if you locate the eTrust logo on the bottom right hand side of the screen (a blue square with a yellow line or bouncing ball moving through it) you can simply right mouse click on this icon and select the **Launch eTrust Antivirus** from the menu that appears like so :



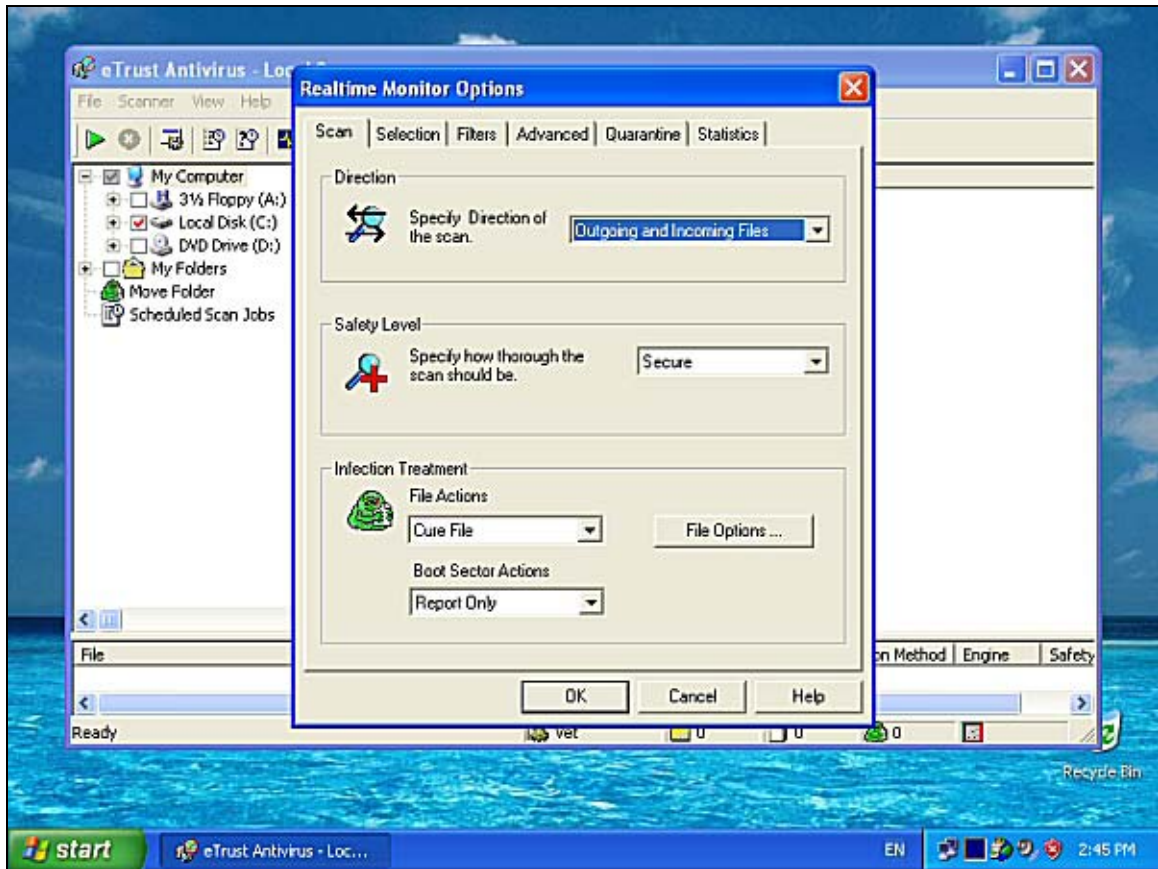
- When eTrust Antivirus launches you should see a screen like so :



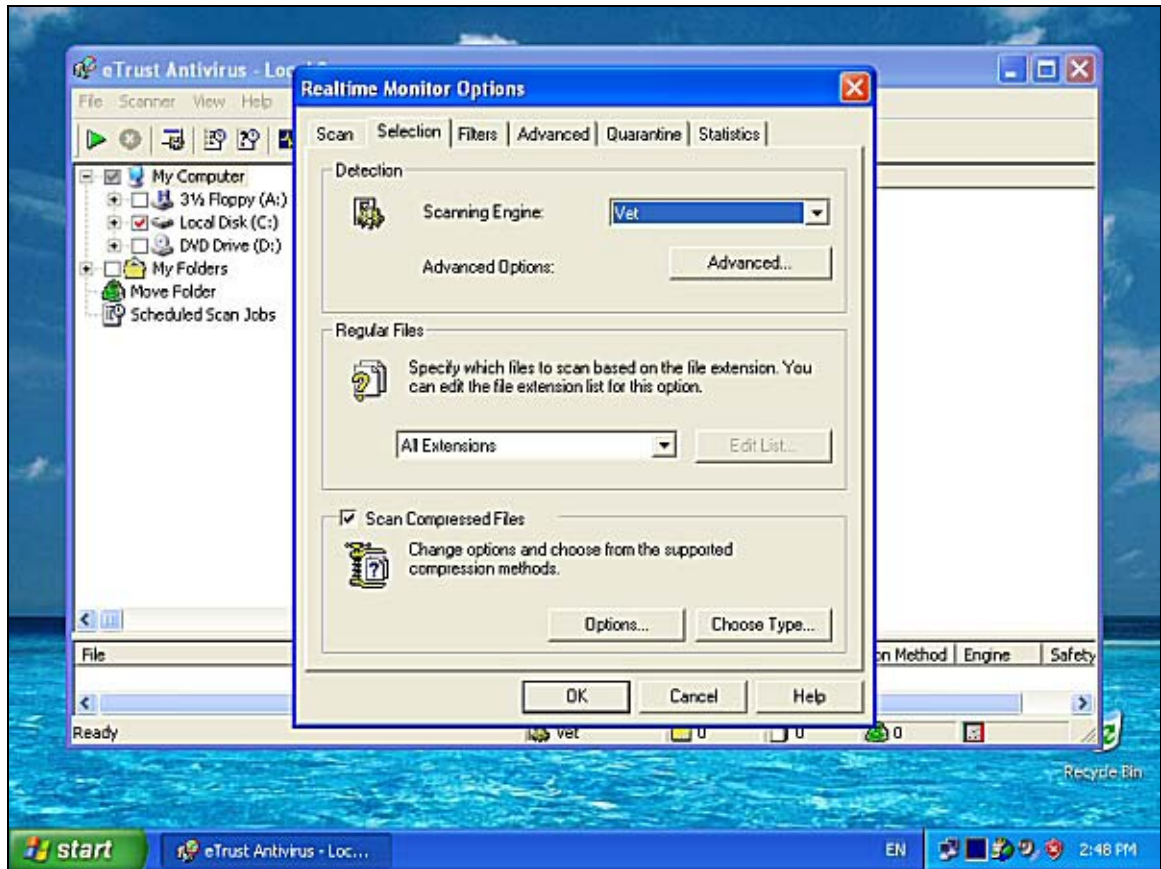
4. From the menu bar across the top of the screen select **Scanner** then **Realtime Monitor Options** from the submenu like so :



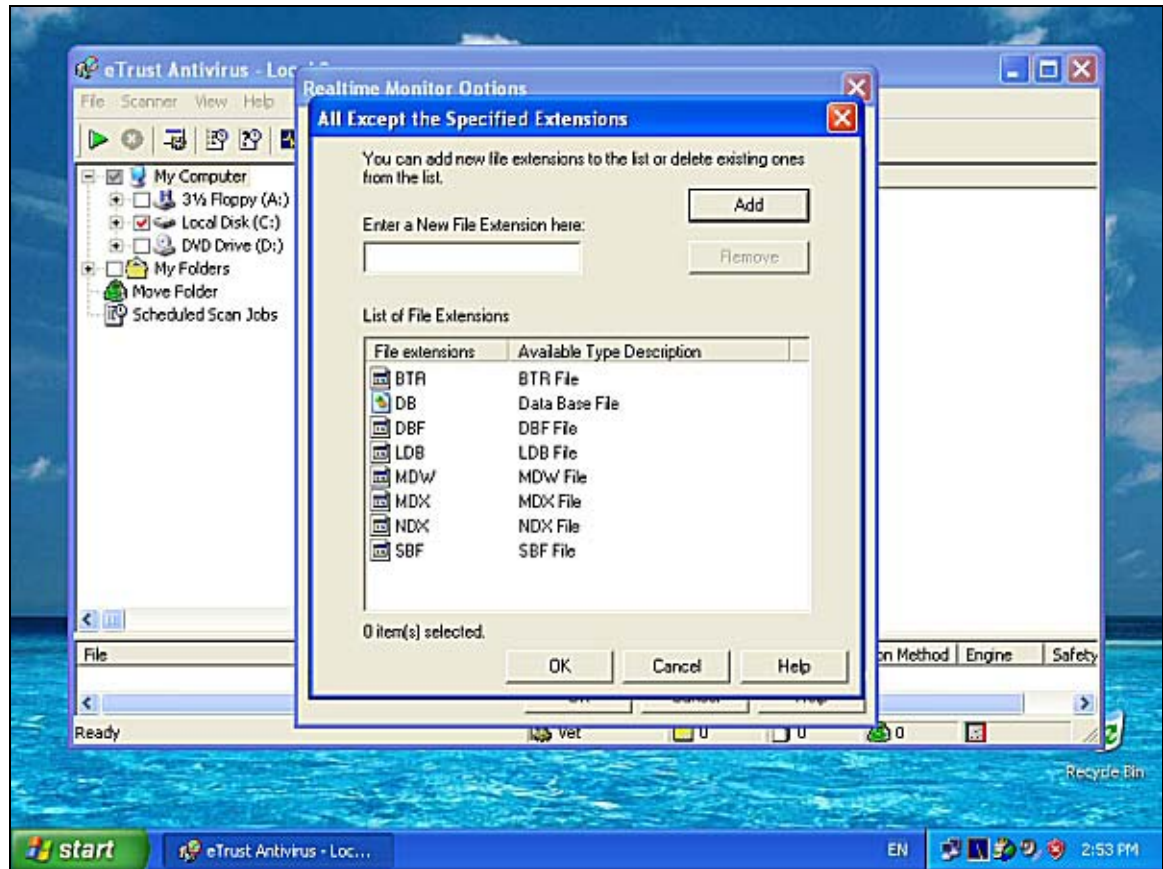
5. Once this has been selected you will see the *Realtime Monitor Options* window appear like so :



6. From here select the second tab from the right called *Selection*. The screen should now appear as :



7. Under the *Regular files* section change the option that says *All Extensions* to *All Except the Specified Extensions*. Now *Edit List* button will now become available for selection. Press the *Edit List* button to add to the file of file extensions that you don't want scanned. Once you selected this the screen should appear like :

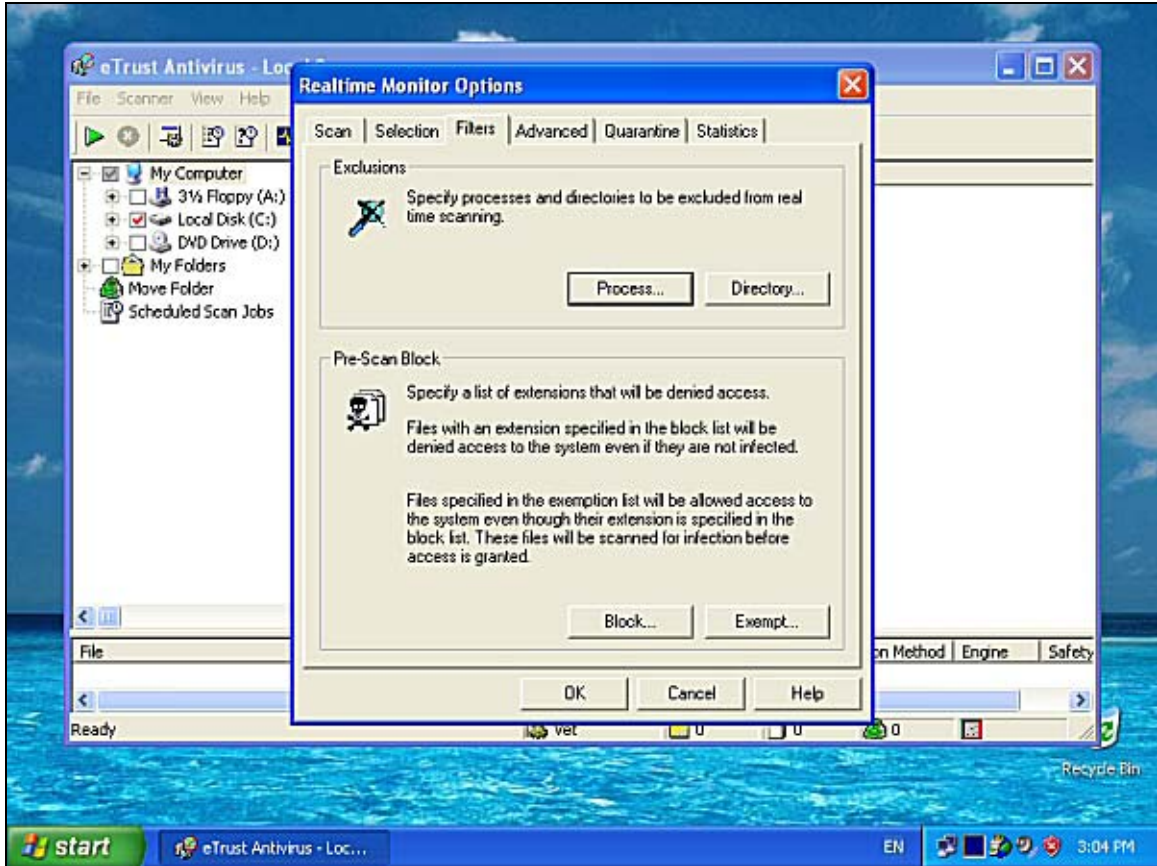


8. A list of file default file extensions to exclude should appear in the list. To add another simply enter the three letter extension in the first field and press the **Add** button. Once you have done this it will appear in the lower list. You can continue to add as many file extensions as you need here.

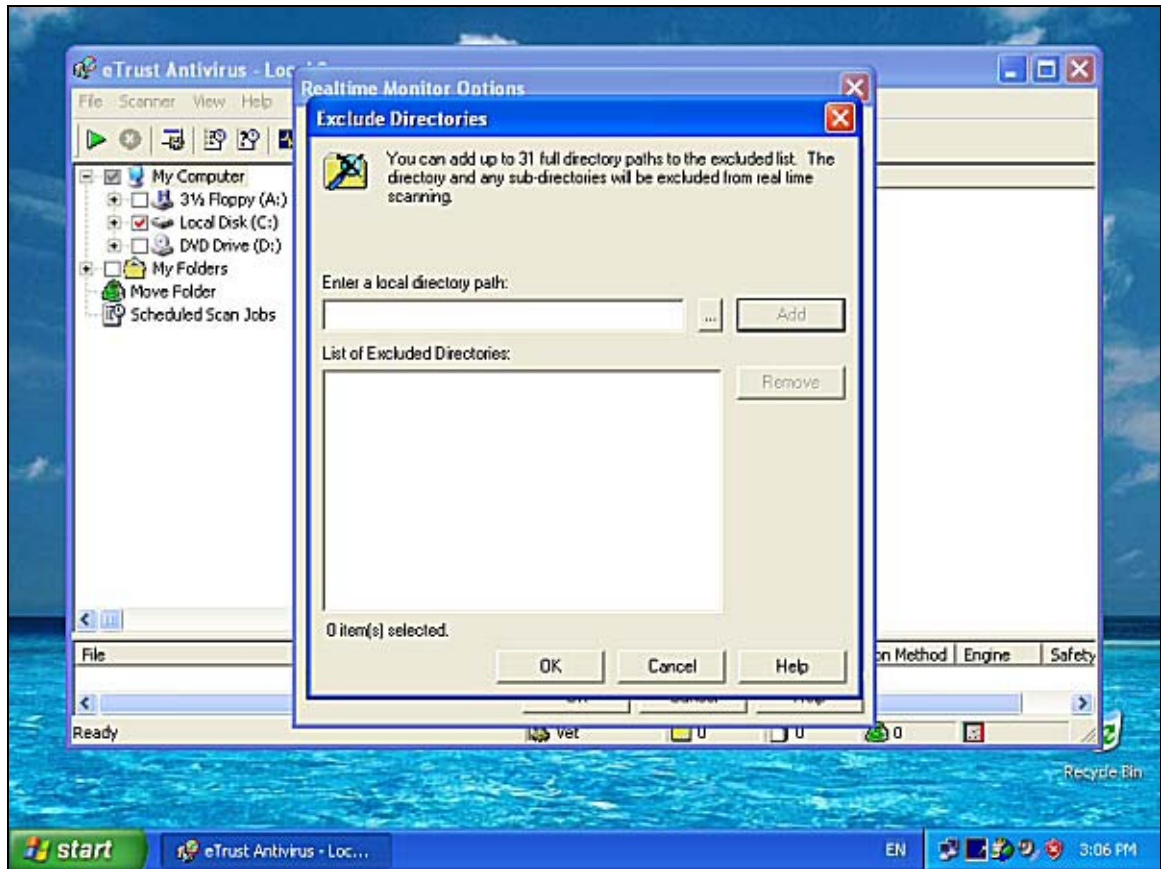
Typical applications and their file extensions include :

<u>Extension</u>	<u>Application</u>
MDB	Microsoft Access Database
DAT	MYOB
DBF	Database

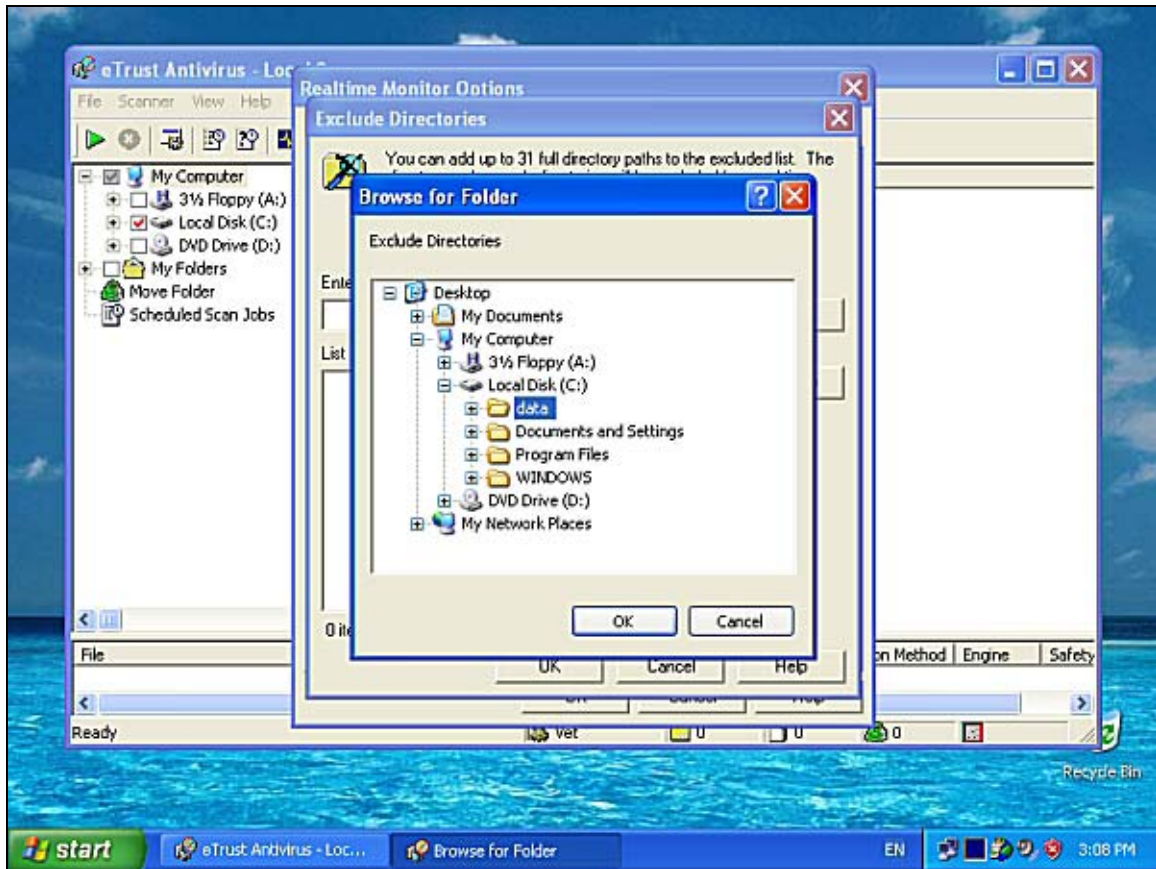
9. Press the **OK** button once you have finished adding the file extensions you wish to exclude from scanning. Select the **Filters** tab in the *Realtime Monitor Options* window to exclude directories from being scanned. The screen should now appear like :



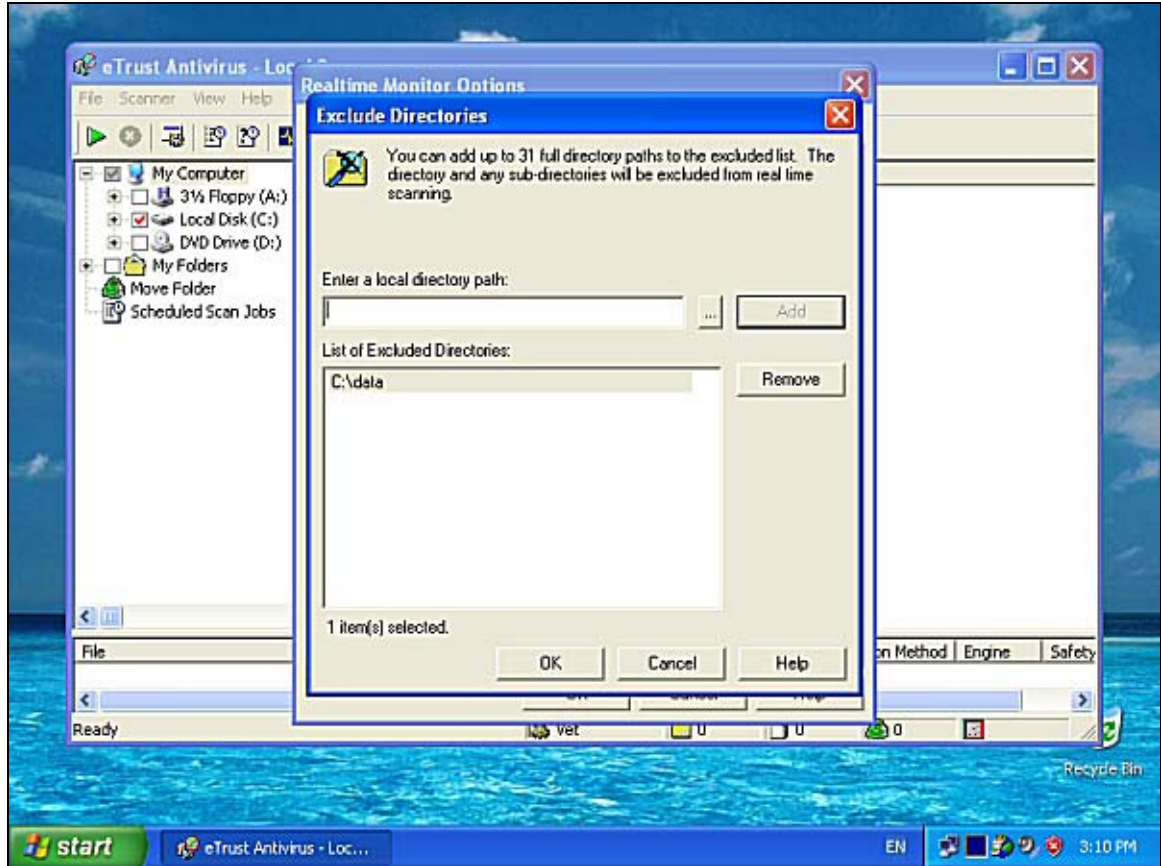
10. In the top right of the screen select the **Directory** button. The screen should now appear like :



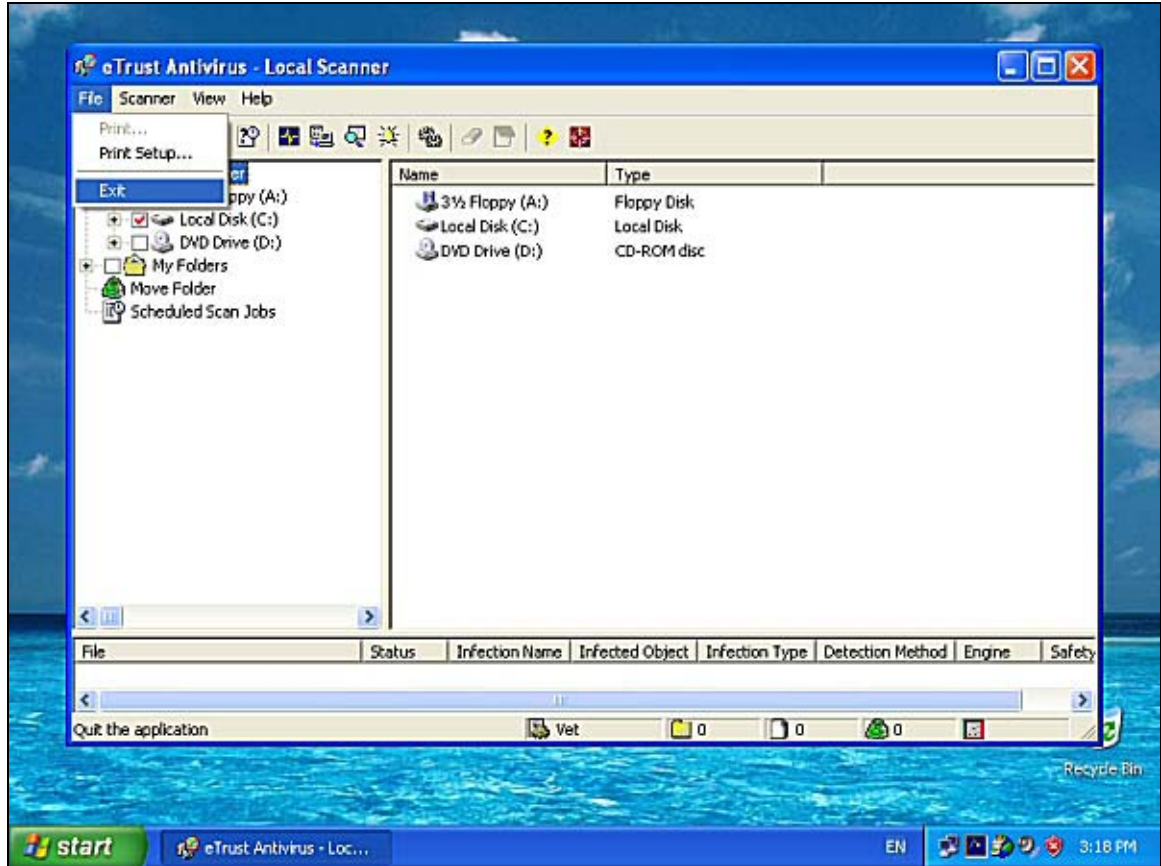
11. To add a directory to be excluded from scans you can type the full name manually into the **Enter a local directory path** box or press the button with the three dots (...) to the right of this box and navigate to the directory like so :



12. Once you have completed this press the **OK** button to return and the directory you selected should appear in the first box. Press the **Add** button to add this directory to *List of Excluded Directories* like so :



13. Once you have completed the list press the **OK** button to return to the *Realtime Monitor Options*. Press the **OK** button to close this window and return to the eTrust Antivirus screen. To close the eTrust Antivirus go **File** then **Exit** like so :



14. The workstation will now exclude any file with the extension that you placed in the exclusion list as well as any directory you placed in the excluded directories list. If you wish to undo these options simply reverse the changes that you made in this document.