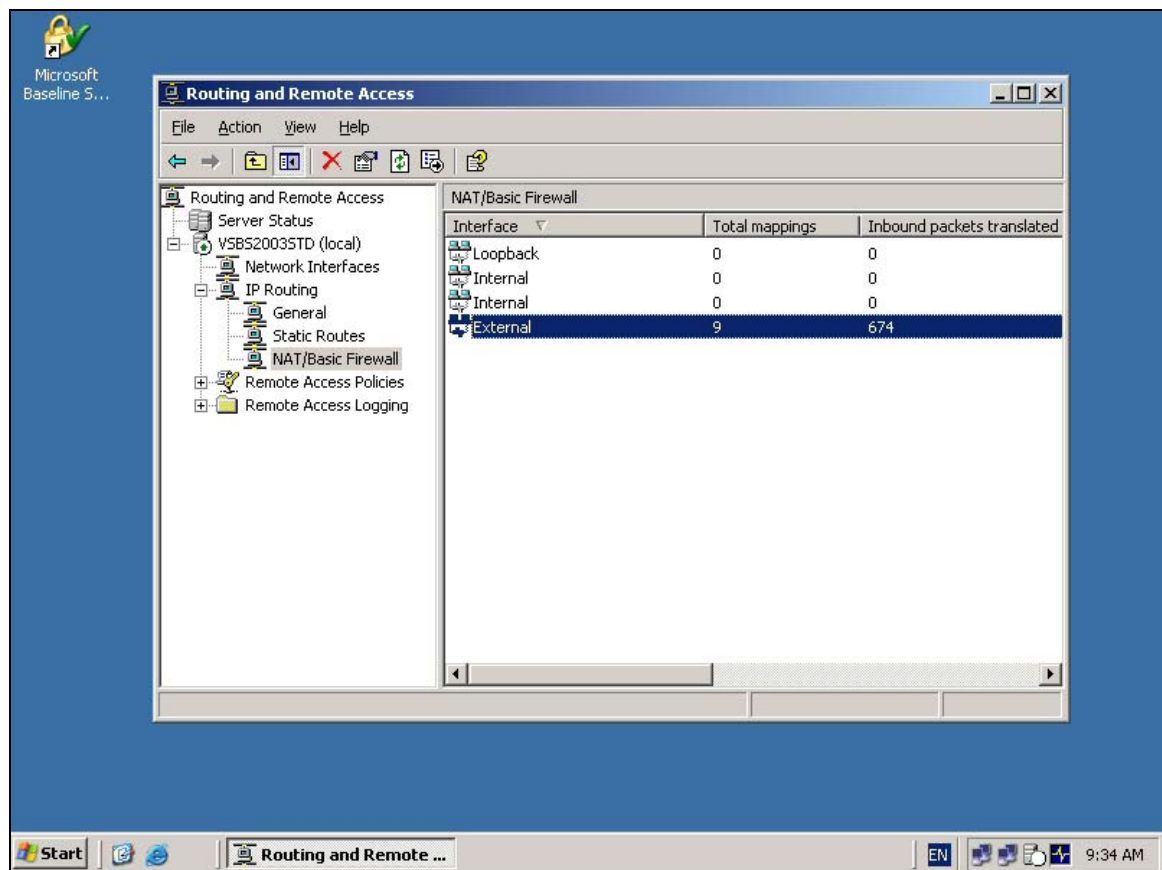


Port Forwarding with SBS 2003 Standard V 1.00

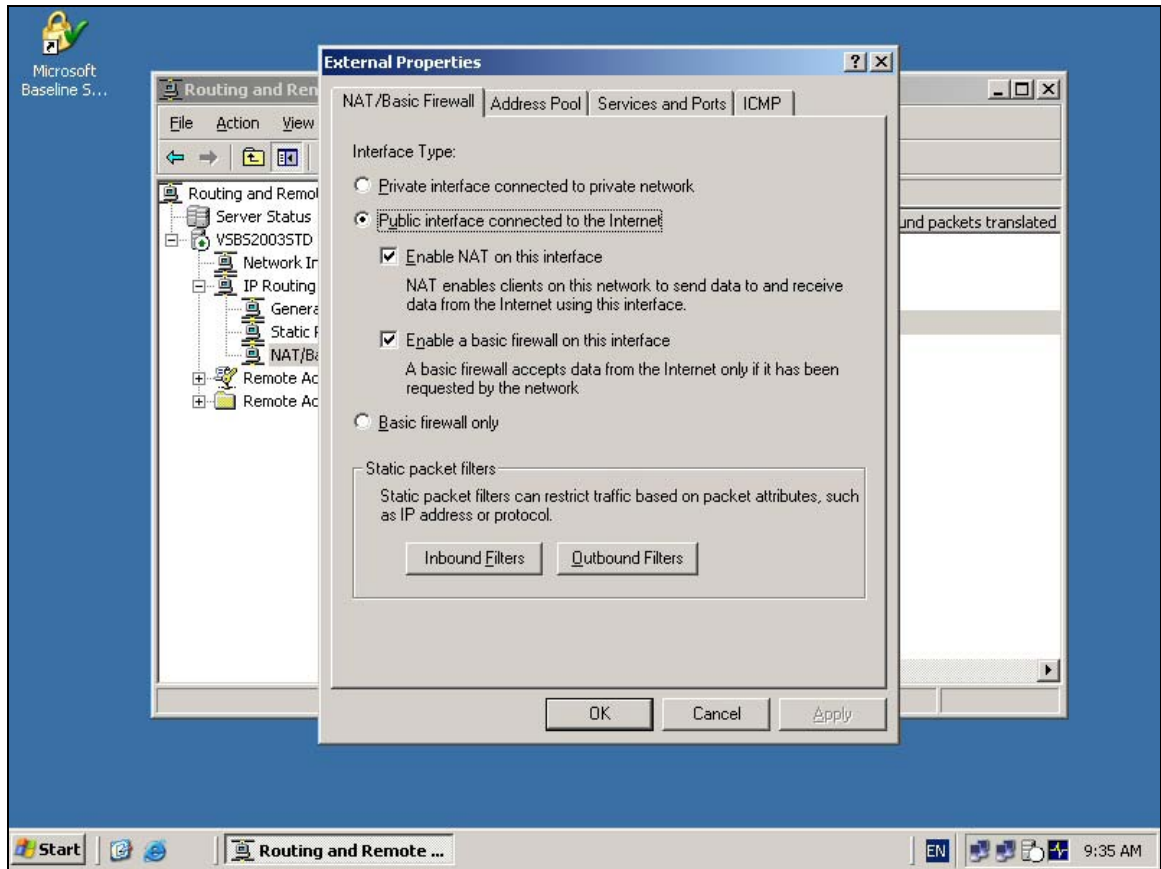
You can use SBS 2003 standard to forward port from the external interface to an internal IP address. This could be handy for devices such as webcams that require direct access to the Internet. This document will take you through the process.

Note this document applies only to SBS 2003 Standard, if you are using SBS 2003 Premium you will have to do port forwarding via ISA 2004.

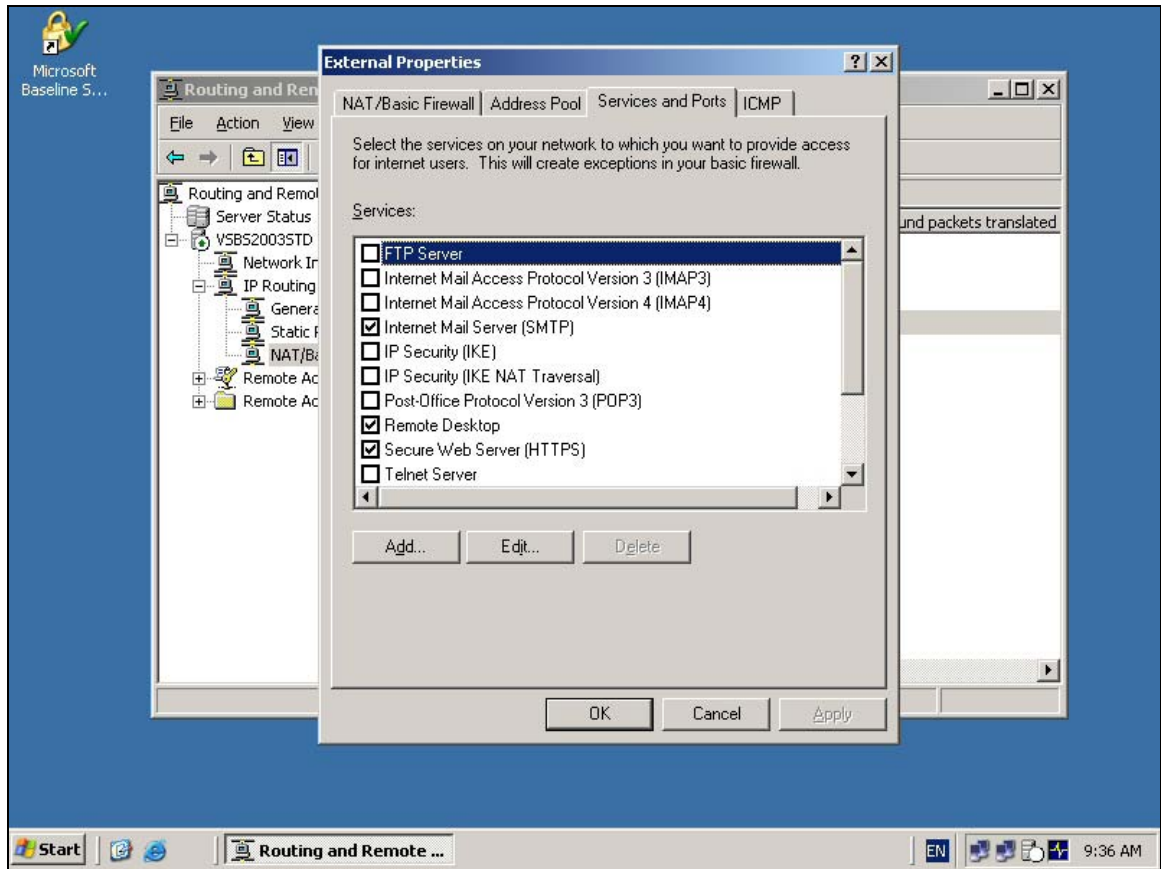
1. Ensure that the target device has a static IP address.
2. Select *Start | Administrative Tools | Routing and Remote Access*
3. Expand the *server name*, then *IP routing*, then *NAT/Basic Firewall*.



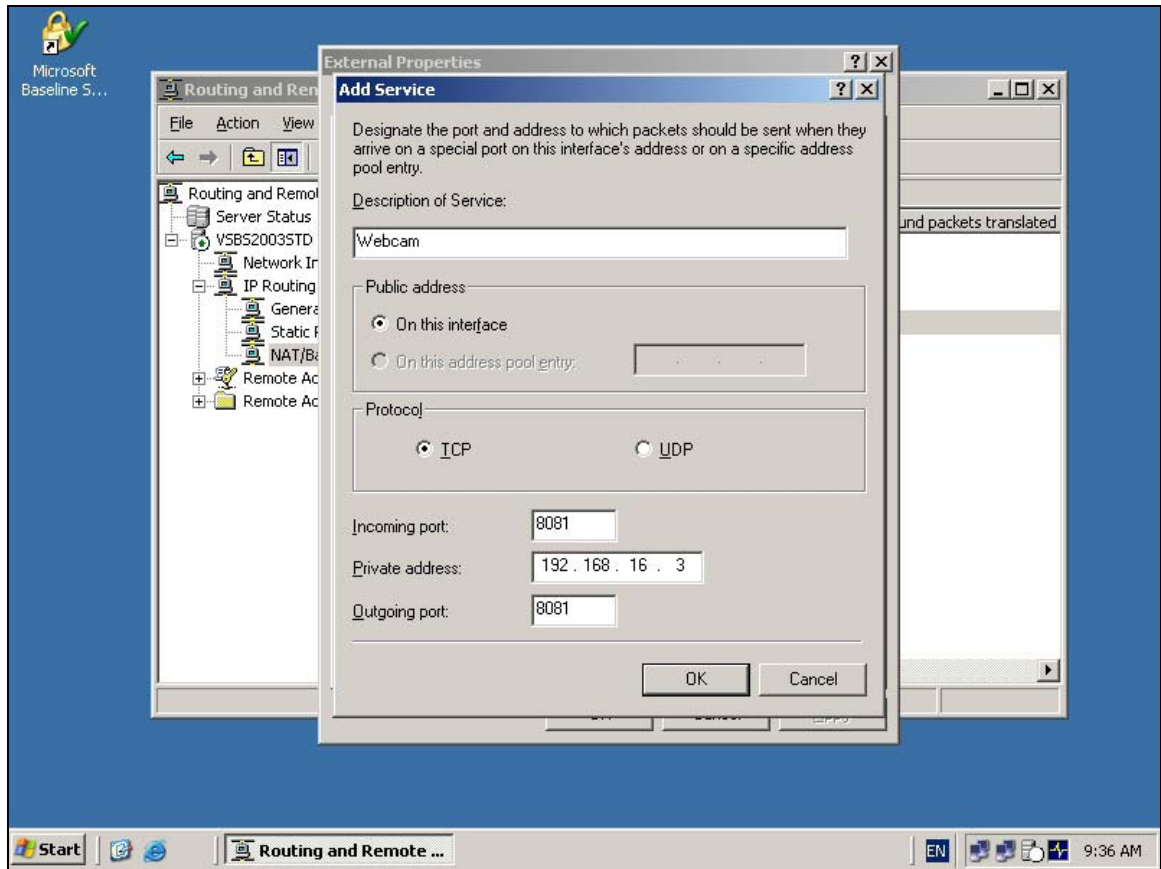
4. *Right mouse click* on the *External network adapter* and select *Properties*.
5. You should see the Network Connection Properties pages like so :



6. Select the *Services and Ports* Tab like so :



7. Click on the *Add* button to bring up the *Add Services* screen like so :



8. Enter the description of the service (in this case *Webcam*), select the protocol, enter the port number (in this case *8081*) and the static IP address on the Private network. Click OK to save changes.
9. If you have a hardware firewall in front of the SBS Server you will need to forward the desired port manually to the external IP address of the SBS Server.