

The Philadelphia Inquirer

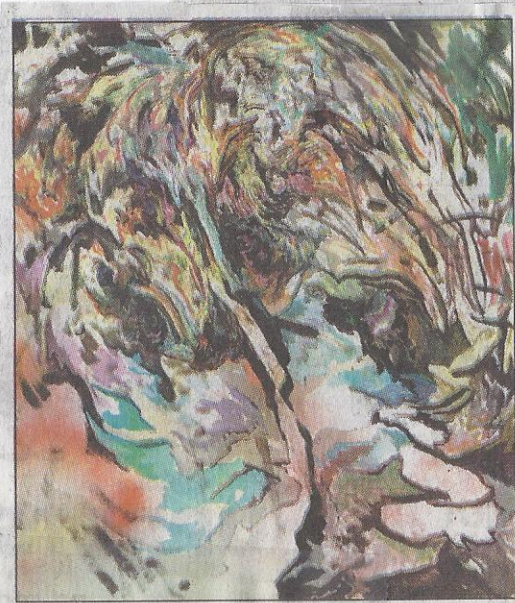
philly.com

183d Year, No. 173 • South Jersey

Sunday, Nov. 20, 2011 ★ Philadelphia Media Network ★ \$2

\$2.25 in some locations outside the metro area

Galleries *By Edith Newhall*



Painting primeval

Robert Goodman's latest paintings catch him moving from his abstract compositions of sharp geometric forms that seemed to be in the process of exploding to a softer, curvier, quasi-representational abstraction influ-

enced by the tropical environment of south Florida, where he grew up. The paintings that make up his exhibition, "Jungle Gothic," at Seraphin Gallery, are also darker than his earlier works, although some of his signature fluorescent pinks and oranges glimmer through the shade.

These paintings have none of Goodman's shattering, over-the-top urban energy. Instead, the dense compositions of works such as *Pyramid* (2011) and *Fever* (2011) bring to mind swamps, heat, and ecstatic religious trances. One's eye is pulled into the depths of palms and cypresses by passages that look like clearings and rivers.

In Goodman's earlier paintings, there was intentionally no *there* there. By contrast, these paintings envelop a viewer in a sense of place. It may be the Everglades or Goodman's personal vision of nature, but it draws you in.

Seraphin Gallery, 1108 Pine St.,
11 a.m. to 6 p.m. Wednesday
through Sunday. 215-923-7000
or www.seraphingallery.com.
Through Dec. 4.