



SmarterGlass

state-of-the-art display solutions

www.smarterglass.com
978 465 6190
sales@smarterglass.com

DLC Display Co., Limited

德爾西顯示器有限公司



MODEL No: DLC0283PZG-3

TEL: 86-755-86029824

FAX: 86-755-86029827

E-MAIL: sales@dlcdisplay.com

WEB: www.dlcdisplay.com

Record of Revision

Date	Revision No.	Summary
2014 07 07	1.0	Rev 1.0 was issued

1. Scope

This data sheet is to introduce the specification of DLC0283PZG-3 active matrix TFT module. It is composed of a color TFT-LCD panel, driver ICs, FPC and a backlight unit. The 2.83'' display area contains 240(RGB) x 320 pixels.

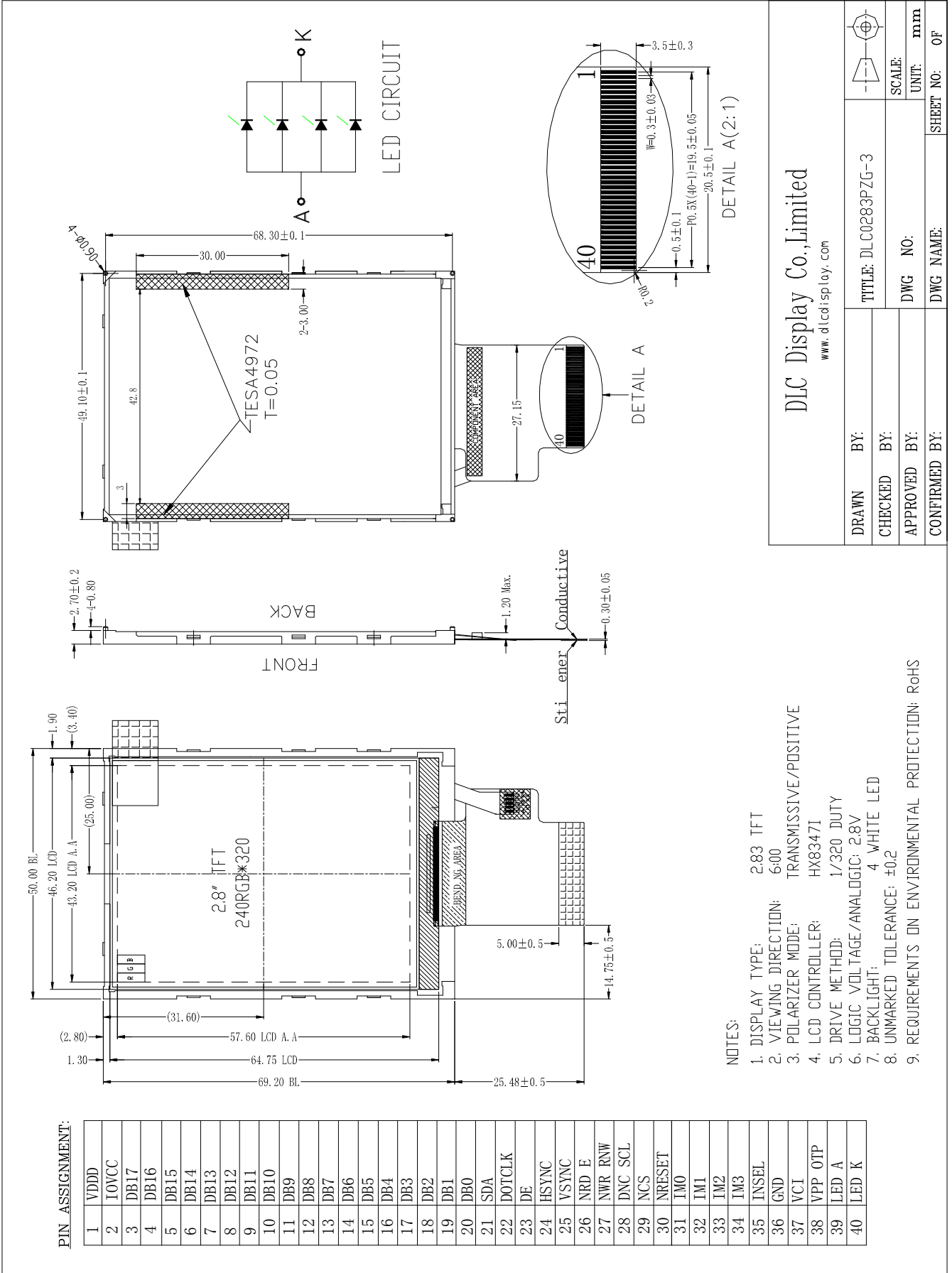
2. Application

Digital equipments which need color display, mobile phone, mobile navigator/video systems.

3. General Information

Item	Contents	Unit
Size	2.83	inch
Resolution	240(RGB) x 320	/
Interface	CPU, RGB	/
Technology type	a-Si	/
Pixel Configuration	R.G.B. Vertical Stripe	
Outline Dimension (W x H x D)	50.0x69.2x2.7	mm
Active Area	43.2 x 57.6	mm
Display Mode	Transmissive, Normally white	/
Backlight Type	LED	/
Driver IC	HX8347I	/
Weight	TBD	g

4. Outline Drawing



PIN ASSIGNMENT:

1	VDD
2	IOVCC
3	DB17
4	DB16
5	DB15
6	DB14
7	DB13
8	DB12
9	DB11
10	DB10
11	DB9
12	DB8
13	DB7
14	DB6
15	DB5
16	DB4
17	DB3
18	DB2
19	DB1
20	DB0
21	SDA
22	DOTCLK
23	DE
24	HSYNC
25	VSYNC
26	NRD E
27	NWR RNW
28	DNC SCL
29	NCS
30	NRESET
31	IM0
32	IM1
33	IM2
34	IM3
35	INSEL
36	GND
37	VCI
38	VPP OTP
39	LED A
40	LED K

NOTES:

1. DISPLAY TYPE: 2.83 TFT
2. VIEWING DIRECTION: 6:00
3. POLARIZER MODE: TRANSMISSIVE/POSITIVE
4. LCD CONTROLLER: HX8347I
5. DRIVE METHOD: 1/320 DUTY
6. LOGIC VOLTAGE/ANALOGIC: 2.8V
7. BACKLIGHT: 4 WHITE LED
8. UNMARKED TOLERANCE: ±0.2
9. REQUIREMENTS ON ENVIRONMENTAL PROTECTION: ROHS

DLC Display Co., Limited

www.dlcdisplay.com

DRAWN BY:	TITLE: DLC0283PZG-3	SCALE:	mm
CHECKED BY:	DWG NO:	UNIT:	mm
APPROVED BY:	DWG NAME:	SHEET NO:	OF
CONFIRMED BY:			

5. Interface signals

Pin No.	Symbol	I/O	Function
1	VDDD	P	Output from internal logic voltage
2	IOVCC	P	Digital I/O pad power supply
3-20	DB17-DB0	I	data bus
21	SDA	I	Serial data Input / Output pin in serial bus system interface
22	DOTCLK	I	Data clock
23	DE	I	Data enable pin
24	HSYNC	I	Line sync signal
25	VSYNC	I	Frame sync signal
26	RD	I	Read enable pin I80 parallel bus system interface
27	WR-SCL	I	WR : Write enable pin I80 parallel bus system interface SCL : Serial data clock in serial bus system interface(IFSEL=0)
28	DNC-SCL	I	DNC :Command / parameter or display data selection pin SCL : Serial data clock in serial bus system interface(IFSEL=1)
29	CS	I	Chip select signal
30	RESET	I	System Reset
31-34	IM0-IM3	I	System interface select
35	INSEL	I	Interface format select pin 0: Register-content interface mode 1: Command-parameter interface mode
36	GND	P	Ground.
37	VCI	P	Power supply
38	VPP_OTP	P	Power supply pin used in OTP program mode
39	VLED+	P	LED back light(Anode)
40	VLED-	P	LED back light(Cathode)

NOTE :

IM3	IM2	IM1	IM0	Interface
0	0	0	0	8080 MCU 16-bit Parallel type I
0	0	0	1	8080 MCU 8-bit Parallel type I
0	0	1	0	8080 MCU 16-bit Parallel type II
0	0	1	1	8080 MCU 8-bit Parallel type II
0	1	0	ID	3-wire serial interface
0	1	1	-	4-wire serial interface
1	0	0	0	8080 MCU 18-bit parallel type I
1	0	0	1	8080 MCU 9-bit parallel type I
1	0	1	0	8080 MCU 18-bit parallel type II
1	0	1	1	8080 MCU 9-bit parallel type II

6. Absolute maximum Ratings

6.1. Electrical Absolute max. ratings

Parameter	Symbol	MIN	MAX	Unit	Remark
Power Supply Voltage	VCC	-0.3	3.6	V	

Notes:

1. If the module is above these absolute maximum ratings. It may become permanently damaged. Using the module within the following electrical characteristic conditions are also exceeded, the module will malfunction and cause poor reliability.
2. $V_{CC} > V_{SS}$ must be maintained.

6.2. Environment Conditions

Item	Symbol	MIN	MAX	Unit	Remark
Operating Temperature	TOPR	-20	70	°C	
Storage Temperature	TSTG	-30	80	°C	

Note:

1. The response time will become lower when operated at low temperature.
2. Background color changes slightly depending on ambient temperature.
The phenomenon is reversible.
3. $T_a \leq 40^\circ\text{C}$: 85%RH MAX.
 $T_a > 40^\circ\text{C}$: Absolute humidity must be lower than the humidity of 85%RH at 40°C .

7. Electrical Specifications

7.1 Electrical characteristics

GND=0V, Ta=25°C

Parameter	Symbol	Condition	Min	Typ	Max	Unit	Note	
Power supply	VCC	Ta=25°C	2.8	3.0	3.3	V		
Input voltage	'H'	V _{IH}	V _{CC} =3.0V	0.8V _{CC}	-	V _{CC}	V	
	'L'	V _{IL}	V _{CC} =3.0V	0	-	0.2V _{CC}	V	
Current Consumption	I _{CC1}	Normal mode	-	8	15	mA	1	
	I _{CC2}	Sleep mode	-	0.05	0.1	mA	1	

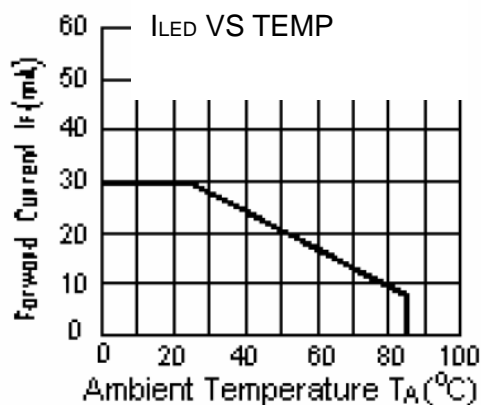
Note: Tested in 1×1 chessboard pattern.

7.2 LED Backlight

Ta=25°C

Item	Symbol	Condition	Min	Typ	Max	Unit	Note
Supply voltage	V _f	I _f =20X4mA	-	3.0	-	V	
Uniformity	ΔBp	I _f =20X4mA	80			%	
Luminance for LCD	L _v	I _f =20X4mA	-	300		Cd/m ²	

Note: LED power consumption is around 0.132W.



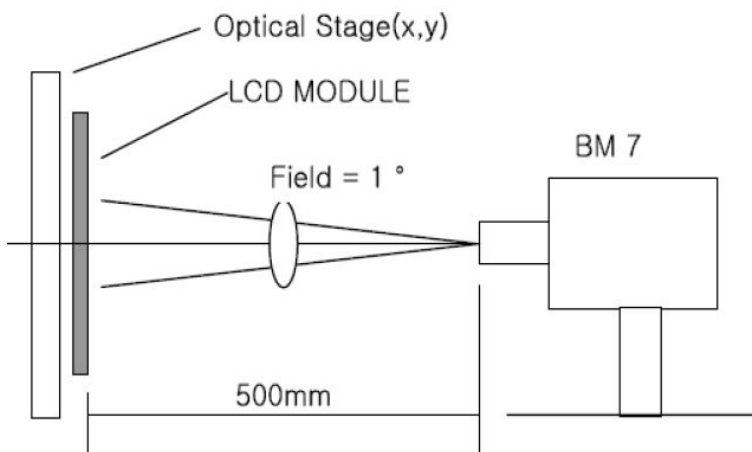
8. Optical Specification

Ta=25°C

Item	Symbol	Condition	Min	Typ.	Max.	Unit	Remark
Contrast Ratio	CR	$\theta=0^\circ$	300	500			Note1 Note2
Response Time	Tr	25°C		10		ms	Note1
	Tf			10		ms	Note3
View Angles	θT	$CR \geq 10$		45		Degree	Note 4
	θB			60			
	θL			60			
	θR			60			
Chromaticity	White	x	Brightness is on	0.28			Note5, Note1
		y		0.33			
	Red	x		0.51			
		y		0.34			
	Green	x		0.31			
		y		0.56			
	Blue	x		0.15			
		y		0.14			
NTSC	S		50	60		%	Note5
Luminance	L			300		cd/m ²	Note1 Note6
Uniformity	U			80		%	Note1 Note7

Note 1: Definition of optical measurement system.

Temperature = 25°C(±3°C); LED back-light: ON, Environment brightness < 150 lx

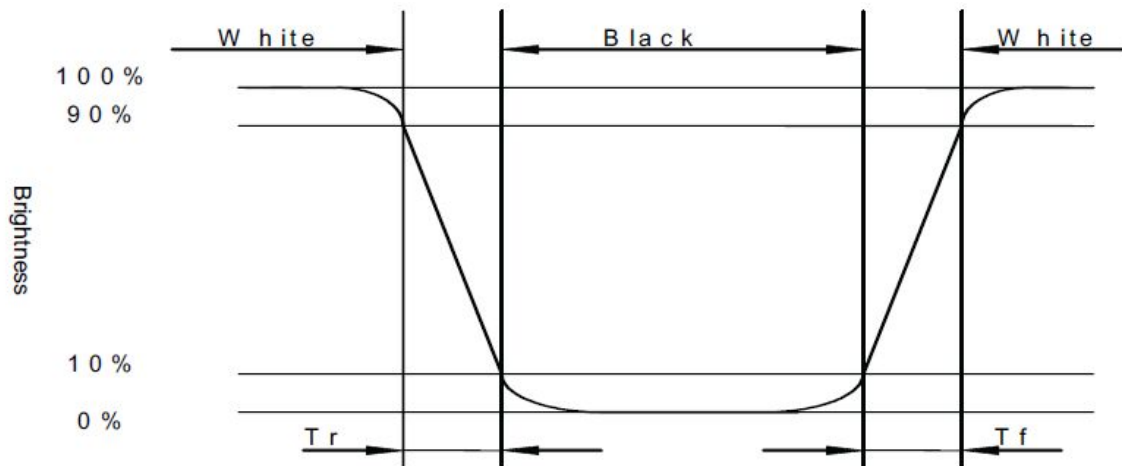


Note 2: Contrast ratio is defined as follow:

$$\text{Contrast Ratio} = \frac{\text{Surface Luminance with all white pixels}}{\text{Surface Luminance with all black pixels}}$$

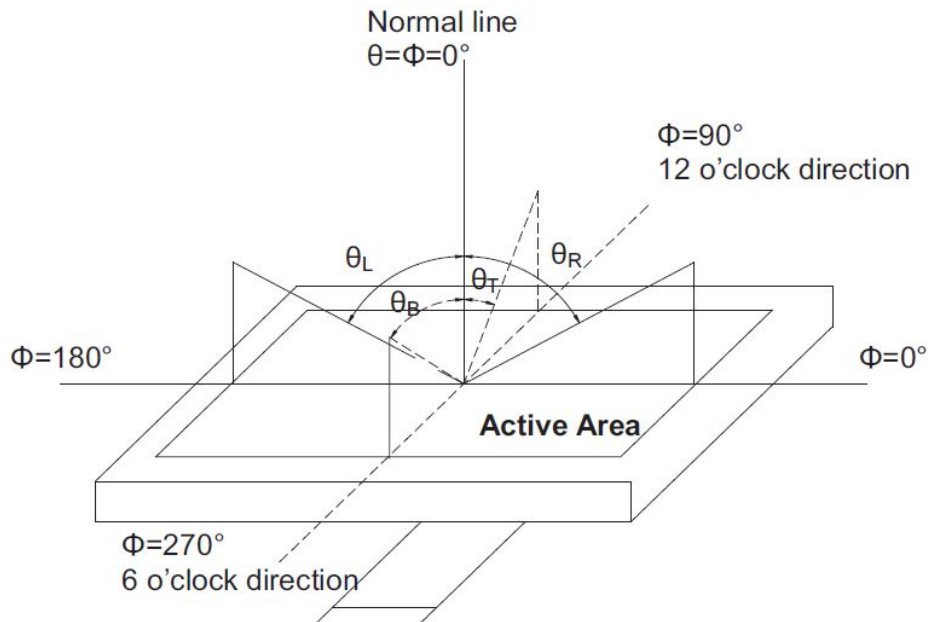
Note 3: Response time is defined as follow:

Response time is the time required for the display to transition from black to white (Rise Time, T_r) and from white to black (Decay Time, T_f).



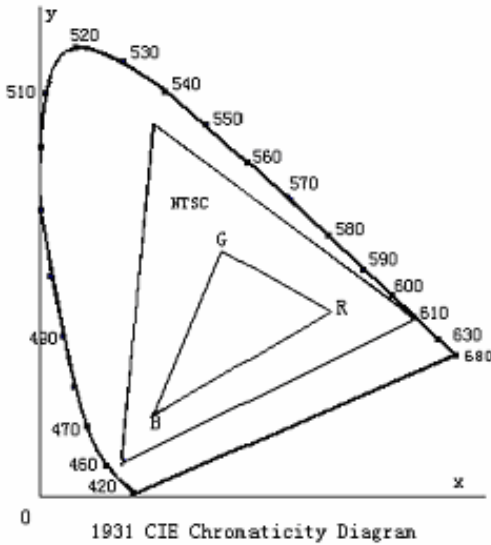
Note 4: Viewing angle range is defined as follow:

Viewing angle is measured at the center point of the LCD.



Note 5: Color chromaticity is defined as follow: (CIE1931)

Color coordinates measured at center point of LCD.



$$S = \frac{\text{area of RGB triangle}}{\text{area of NTSC triangle}} \times 100\%$$

Note 6: Luminance is defined as follow:

Luminance is defined as the brightness of all pixels “White” at the center of display area on optimum contrast.

Note 7: Luminance Uniformity is defined as follow:

Active area is divided into 9 measuring areas (Refer Fig. 2). Every measuring point is placed at the center of each measuring area.

$$\text{Uniformity (U)} = \frac{\text{Minimum Luminance(brightness) in 9 points}}{\text{Maximum Luminance(brightness) in 9 points}}$$

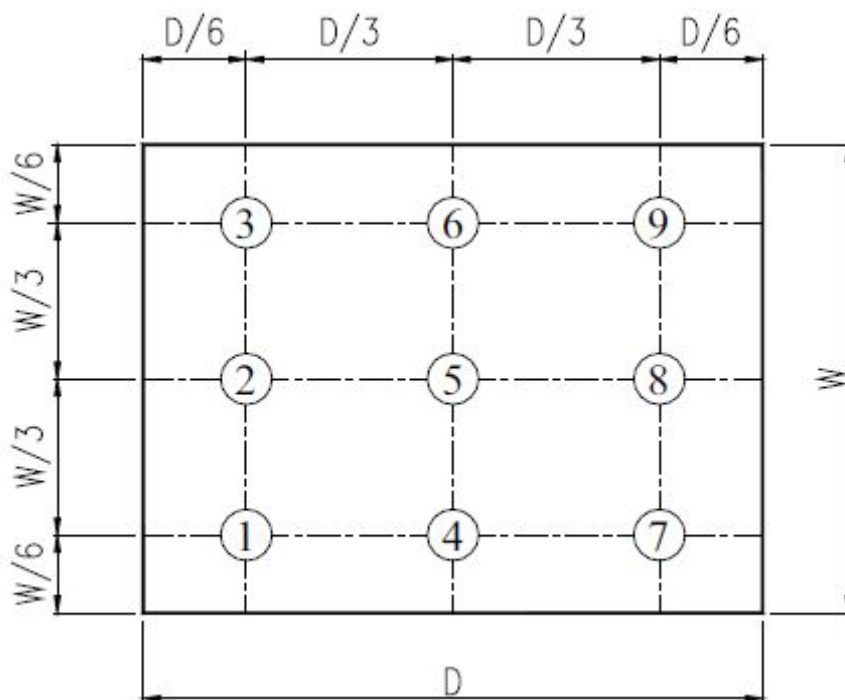


Fig. 2 Definition of uniformity

9. Environmental / Reliability Tests

No	Test Item	Condition	Judgment criteria
1	High Temp Operation	Ts=+70°C, 96hrs	Per table in below
2	Low Temp Operation	Ta= 20°C, 96hrs	Per table in below
3	High Temp Storage	Ta=+80°C, 96hrs	Per table in below
4	Low Temp Storage	Ta= 30°C, 96hrs	Per table in below
5	High Temp & High Humidity Storage	Ta=+60°C, 90% RH 96 hours	Per table in below (polarizer discoloration is excluded)
6	Thermal Shock (Non operation)	30°C 30 min~+80°C 30 min, Change time:5min, 5 Cycles	Per table in below
7	ESD (Operation)	C=150pF, R=330Ω , 5points/panel Air:±8KV, 5times; Contact:±4KV, 5 times;	Per table in below
8	Vibration (Non operation)	10Hz~150Hz, 100m/s ² , 120min	Per table in below
9	Shock (Non operation)	Half sine wave,300m/s ² ,11ms	Per table in below
10	Package Drop Test	Height:80 cm, 1 corner, 3 edges, 6 surfaces	Per table in below

INSPECTION	CRITERION(after test)
Appearance	No Crack on the FPC, on the LCD Panel
Alignment of LCD Panel	No Bubbles in the LCD Panel No other Defects of Alignment in Active area
Electrical current	Within device specifications
Function / Display	No Broken Circuit, No Short Circuit or No Black line No Other Defects of Display

10. Precautions for Use of LCD Modules

10.1 Safety

The liquid crystal in the LCD is poisonous. Do not put it in your mouth. If the liquid crystal touches your skin or clothes, wash it off immediately using soap and water.

10.2 Handling

- A. The LCD and touch panel is made of plate glass. Do not subject the panel to mechanical shock or to excessive force on its surface.
- B. Do not handle the product by holding the flexible pattern portion in order to assure the reliability
- C. Transparency is an important factor for the touch panel. Please wear clear finger sacks, gloves and mask to protect the touch panel from finger print or stain and also hold the portion outside the view area when handling the touch panel.
- D. Provide a space so that the panel does not come into contact with other components.
- E. To protect the product from external force, put a covering lens (acrylic board or similar board) and keep an appropriate gap between them.
- F. Transparent electrodes may be disconnected if the panel is used under environmental conditions where dew condensation occurs.
- G. Property of semiconductor devices may be affected when they are exposed to light, possibly resulting in IC malfunctions.
- H. To prevent such IC malfunctions, your design and mounting layout shall be done in the way that the IC is not exposed to light in actual use.

10.3 Static Electricity

- A. Ground soldering iron tips, tools and testers when they are in operation.
- B. Ground your body when handling the products.
- C. Power on the LCD module before applying the voltage to the input terminals.
- D. Do not apply voltage which exceeds the absolute maximum rating.
- E. Store the products in an anti-electrostatic bag or container.

10.4 Storage

- A. Store the products in a dark place at $+25^{\circ}\text{C} \sim 10^{\circ}\text{C}$ with low humidity (40% RH to 60% RH). Don't expose to sunlight or fluorescent light.
- B. Storage in a clean environment, free from dust, active gas, and solvent.

10.5 Cleaning

- A. Do not wipe the touch panel with dry cloth, as it may cause scratch.
- B. Wipe off the stain on the product by using soft cloth moistened with ethanol. Do not allow ethanol to get in between the upper film and the bottom glass. It may cause peeling issue or defective operation. Do not use any organic solvent or detergent other than ethanol.

10.6 Cautions for installing and assembling

Bezel edge must be positioned in the area between the Active area and View area. The bezel may press the touch screen and cause activation if the edge touches the active area. A gap of approximately 0.5mm is needed between the bezel and the top electrode. It may cause unexpected activation if the gap is too narrow. There is a tolerance of 0.2 to 0.3mm for the outside dimensions of the touch panel and tail. A gap must be made to absorb the tolerance in the case and connector.

