

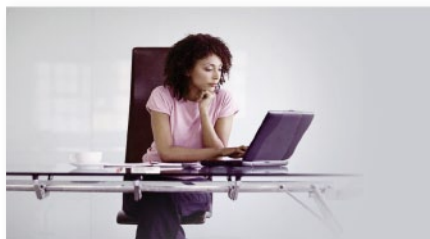
RoboCam

The Ultimate Remote Monitor

B14



- ✓ Plug'N'Play Hi-Res IP-Camera
- ✓ 24/7 WiFi Remote Monitor
- ✓ Alarm Control Center
- ✓ Video + Audio Recorder
- ✓ Video + Audio Player



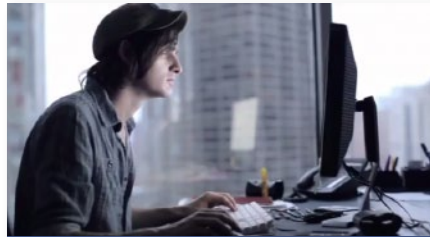
Home & Office Access..

Any time from any country.



Hi-Res Playback..

..even in complete darkness.



Record on RoboCam..

..for months, Playback on mobile.



Outdoor monitoring..

..even live and recorded sound.



Easy to use



Private & Secure



Built-in Recorder



Microphone



Phone Alerts



One Click WiFi



Day & Night



Free Apps



Motion Alarm



Email Snapshot



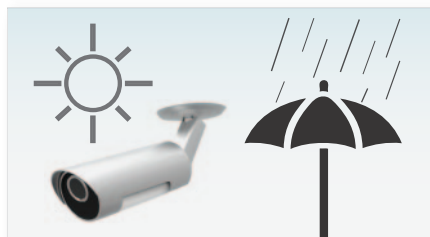
Any internet speed!

Any Router type, Even 3G/LTE.



Receive Alerts & photos..

..for break-ins, screaming or fire!



Weatherproof design

against heat, rain & dust.



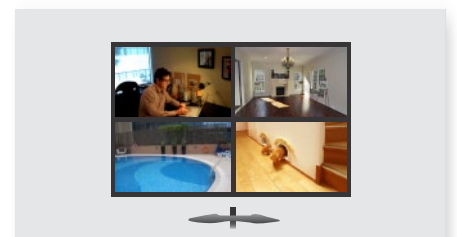
Watchdog Function

..to prevent system failure.



One Click Setup

Forget Passwords & settings.



Monitor & Control ..

36 RoboCams from your PC.

myRoboCam.com

Specifications

Model	RoboCam-B14
Power	DC 12V, 1A
Processors	RISC CPU, hardware video processing and compression.
Network interface	Ethernet 10BaseT/100BaseTX, Auto-MDIX, RJ-45
Wireless interface	IEEE 802.11n 90 - 150 Mbps, IEEE 802.11g 90 - 54 Mbps, IEEE 802.11b 1 - 11 Mbps
	Transmit power: 14.5dBm typically @ 802.11g, 17.5dBm typically @ 802.11b
	Receiver sensitivity: 54Mbps: Typical -73dBm @ 10% PER, 11Mbps: Typical -86dBm @ 10% PER
	Antenna gain: 0.1 dBi
Housing	IP66 rated
Image sensor	RGB Mega 1/4 inch CMOS
	Day & Night separate sensors
	Automatic exposure control, automatic white balance, automatic gain control, automatic brightness control.
Light sensitivity	0.2 Lux (IR LED off)
	0 Lux (with 10 meters IR LED on)
	Automatically turn on the IR LED on low light environment.
IR LED	1 to 3 high power IR LED, software adjustable.
Lens	4.2 mm, F2.4, viewing angle: 62°, fixed iris. focus range: 30 cm to infinity
	Separate lens for Day & Night vision
Buttons	One reset button, to factory default settings
	One WPS (WiFi protected Setup) button for automatic WiFi setup
Indicators	One LED for Internet connection status indication
	One LED for Ethernet connection indication
	One LED for SD card recording indication
Video compression	H.264, baseline profile level 3.1
Video streaming	Separate frame rate/resolution/bandwidth settings for a Windows PC & smartphone
Video settings	Resolution: (WXGA)1280x800, 1024x768, VGA(640x480), QVGA(320x240)
	Bandwidth : 64k, 128k, 256k, 512k, 768k, 1M, 1.2M, 1.5M, 2M, 3M bps
	Frame rate : 1~5, 10, 15, 20, 25, 30 fps
Audio	Built-in microphone for audio monitoring
	Audio compression: G.711
Security	Video display ID/password protection
	WiFi WEP and WPA/WPA2 security mode
Installation, management and maintenance	Plug & Play by a camera ID & password, Video management software for video access and multi-camera management
Supported protocols	IPv4, HTTP, TCP, ICMP, RTSP, RTP, UDP, RTCP, SMTP, SNMP, FTP, DHCP, ARP, DNS, PPPoE, etc.
Accessories (included)	Power adaptor, RJ45 Ethernet cable, cable splitter, quick installation guide, ID/Password card.
Video management software	Surveillance software for a Windows PC accepts up to 36 cameras with sound
Users	Up to 20 simultaneous unicast users (subject to video settings)
Alarm and event management	Events triggered by motion and sound detection, Email/ftp alarm message, Push Notifications on iPhone/iPad and Android devices.
Dimensions (HxWxD) and weight	52 x 58 x 230 mm, 368 g (including camera bracket, excluding power adaptor)
Approvals	EMC - CE, FCC Part 15 Subpart B Class B
	Wireless RF - CE, FCC Part 15 Subpart C
	Power supply: CE, FCC, UL, EN 60950
Operating conditions	0-50 °C, Humidity 20 – 80% RH (non-condensing)