

RoboCam

The Ultimate Remote Monitor

✓ 24/7 WiFi Remote Monitor

✓ Plug'N'Play Hi-Res IP-Camera

✓ Video & Audio Recorder

✓ 2-Way Communicator

✓ Alarm Control Center

Watch, Listen & Talk around the world Using PC, Mac, iPhone, iPad, Android

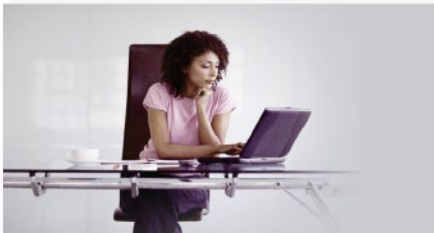


Available on the App Store

ANDROID APP ON Google play

Works with Mac

Windows App



Home & Office Access..

Any time from any country.



Hi-Res Playback..

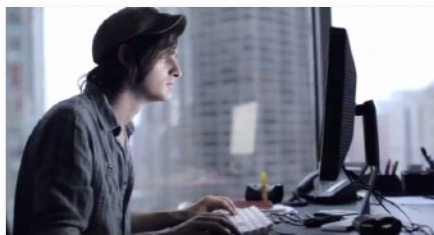
..even in complete darkness.



High Definition

Detailed megapixel video

..and a wider angle



Record on RoboCam..

..for months, Playback on mobile.



Covers the entire room..

..from the wall, shelf or ceiling.



Built-in Speaker

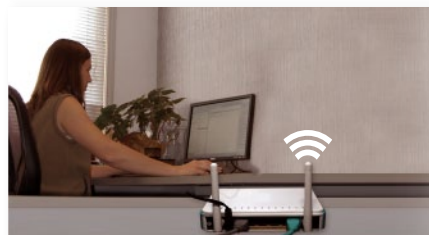
No extra speaker required

Speak to others from any country.



Listen & talk..

..& warn others, without calling!



Any internet speed!

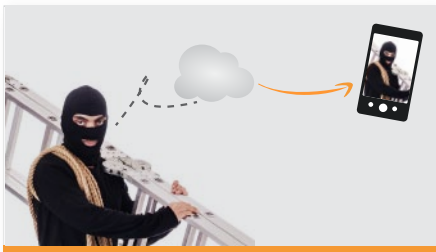
Any Router type, Even 3G/LTE.



Thermometer

Instant room temperature

Receive alerts for changes.



Receive Alerts & photos..

..for breakins, screaming or fire!



One Click Setup

Forget Passwords & settings.

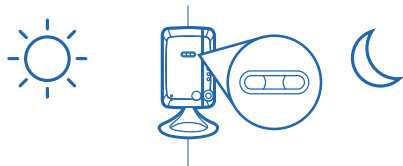


Monitor & Control ..

36 RoboCams from your PC.

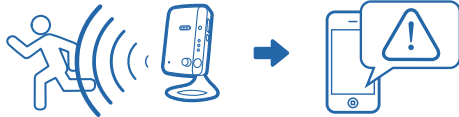
Specifications

Model	RoboCam-F12HD
Interfaces	RJ-45 Ethernet 10/100Mbps, Auto-Negotiation (MIDX); Wireless IEEE 802.11 b/g/n
Max. Connection	Up to 36 cameras and 20 unicast users simultaneously
Recording	Built-in Micro-SD slot (up to 32GB); direct recording to NAS Storage or local PC/ Laptop
Image Sensor	RGB VGA ¼ inch CMOS; Day and Night Separate Sensors; Automatic Exposure/ White Balance/ Gain/ Brightness control
Light Sensitivity	0.2 Lux (IR LED off); 0 Lux (with 10 meters IR LED on); Automatically turn on the IR LED in low light environment
Lens	4.5mm, f1.9, viewing angle: 55.6, fixed iris, focus range: 30cm to infinity (F12); 4.2mm, f2.4 (F12HD); two separate lenses, one for day and one for night
Buttons	Factory default reset; Automatic Wi-Fi security setup (WPS)
Indicators	LED indication for Internet connection, Ethernet connection and SD card recording
Video	H.264 (MPEG-4 AVC) compression; Max. resolution VGA 640 x 480 (F12) & 1280x800/HD720P (F12HD) and Separate frame rate/resolution/bandwidth setting for streaming to PC and mobile
Audio	Built-in microphone for audio monitoring, 3.5mm line out jack for external speaker (F12); Audio compression: G.711
	Built-in microphone & speaker for audio monitoring (F12HD)
Thermometer	Available only with F12HD
Alert And Monitoring	Events triggered by PIR sensor (abrupt changes in temperature) and sound detection (detection range 8m)
Mechanisms	Notifications via Email or FTP server; Push Notifications on iOS and Android devices*
Physical Specifications	Dimensions: 68(L) x 25(W) x 95(H) mm, Weight: 280g (incl. Camera bracket)
Environmental Specifications	Operating Temperature: 0-50°C; Humidity: 20-80% RH (non-condensing)



Dual Lens / Sensors for Day-Time and Night-Time Operation

Equipped with Dual Lens / image sensors for clearer visuals, The F12 / F12HD automatically selects the Day / Night-Time Lens depending on the illumination level.



Passive Infrared (PIR) Sensor

The PIR sensor incorporated into the design of the IP camera reduces the occurrence of false alerts by detecting the abrupt changes in temperature. Alternatively, you can set to trigger alarm siren via external speakers and send Push Notifications* to your supported smartphones / tablets.



2-Way Audio**

With built-in microphone and support for external speakers (F12) and Built-in Speaker (F12HD) users can communicate with people around the camera allowing application such as public address to remote work-site, checking the identity of a person before unlocking a door or talking to your loved ones at home or staff in your office/ retail.



One Touch Wi-Fi Security Setup (WPS)

Save the trouble of configuring, simply press on the WPS Button (on both F12 /F12HD and router) for easy establishment of a secure wireless network.

* Push Notifications is only available in Android, iOS mEZviewerFull version.

** External speaker is required.