

RoboCam

The Ultimate Remote Monitor



PT13

- ✓ Plug'N'Play HD IP-Camera
- ✓ 24/7 WiFi Remote Monitor
- ✓ Alarm Control Center
- ✓ Video + Audio Recorder
- ✓ Video + Audio Player



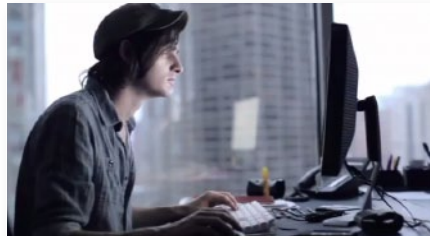
Home & Office Access..

Any time from any country.



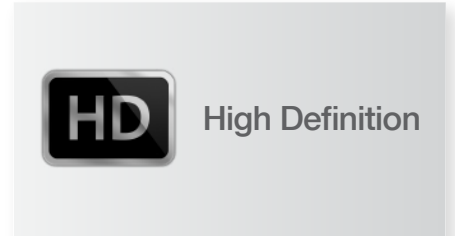
Hi-Res Playback..

..even in complete darkness.



Record on RoboCam..

..for months, Playback on mobile.



Detailed megapixel video

..and a wider angle



Easy to use



Private & Secure



Built-in Recorder



Microphone



Phone Alerts



One Click WiFi



Day & Night



Free Apps



Motion Alarm



Email Snapshot



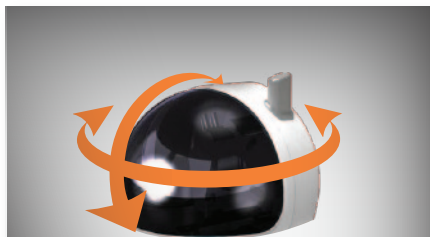
Any internet speed!

Any Router type, Even 3G/LTE.



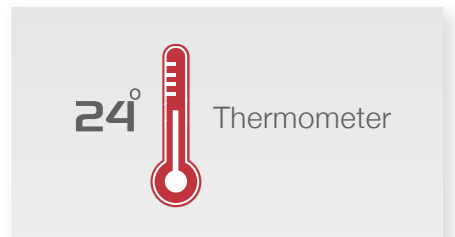
Receive Alerts & photos..

..for break-ins, screaming or fire!



Pan/Tilt control

Viewing angles: pan 180° & tilt 90°



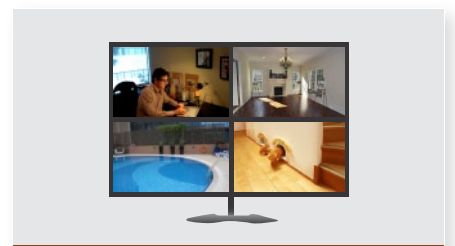
Instant room temperature

Receive alerts for changes.



One Click Setup

Forget Passwords & settings.



Monitor & Control ..

36 RoboCams from your PC.

Specifications

Model	RoboCam-PT13
Power	DC 12V, 1A
Processors	RISC CPU, hardware video processing and compression.
Network interface	Ethernet 10BaseT/100BaseTX, Auto-MDIX, RJ-45
Wireless interface	IEEE 802.11n 90 - 150 Mbps, IEEE 802.11g 6 - 54 Mbps, IEEE 802.11b 1 - 11 Mbps
	Transmit power: 14.5dBm typically @ 802.11g, 17.5dBm typically @ 802.11b
	Receiver sensitivity: 54Mbps: Typical -73dBm @ 10%PER, 11Mbps: Typical -86dBm @ 10% PER
	Antenna gain: 0.1 dBi
Pan/Tilt control	Pan viewing range 180° (-90° ~ 90°), Tilt viewing range 90° (0° ~ 90°)
Image sensor	RGB Mega 1/4 inch CMOS, Day and night separate sensors
	Automatic exposure control, automatic white balance, automatic gain control, automatic brightness control.
PIR sensor	Effective distance – 7 meters
Infrared thermometer	Infrared
	Range: -40 ~ 115 °C, accuracy:+-0.5°C, Field of view : 90 degree
Light sensitivity	0.2 Lux (IR LED off), 0 Lux (with 10 meters IR LED on), Automatically turn on the IR LED on low light environment.
Lens	4.2 mm, F2.4, viewing angle: 66°, fixed iris.
	focus range: 30 cm to infinity
	Day and night separate lens
Buttons	One reset button, to factory default settings, One WPS button for automatic WiFi setup
Indicators	One LED for Internet connection status indication, One LED for Ethernet connection indication, One LED for SD card recording indication
Video compression	H.264, baseline profile level 3.1
Video streaming	Separate frame rate/resolution/bandwidth settings for PC and mobile.
Video settings	Resolution: (WXGA)1280x800, 1024x768, VGA(640x480), QVGA(320x240)
	Bandwidth : 64k, 128k, 256k, 512k, 768k, 1M, 1.2M, 1.5M, 2M, 3M bps
	Frame rate : 1~5, 10, 15, 20, 25, 30 fps
Audio	Built-in microphone for audio monitoring, Built-in 0.5W speaker for alarm and half-duplex two-way audio
	Audio compression: G.711
Security	Video display ID/password protection
	WiFi WEP and WPA/WPA2 security mode
Installation, management and maintenance	Plug & play by ID/password, Video management software for video access and multi-camera management, Firmware upgrades via FTP
Supported protocols	IPv4, HTTP, TCP, ICMP, RTSP, RTP, UDP, RTCP, SMTP, SNMP, FTP, DHCP, ARP, DNS, PPPoE, etc.
Accessories (included)	Power adaptor, RJ45 Ethernet cable, quick installation guide, ID/Password card.
Video management software	Surveillance software for viewing and archiving up to 36 cameras
Users	Up to 20 simultaneous unicast users (depends on video settings)
Alarm and event management	Events triggered by PIR and sound detection, Email/ftp alarm message, Push notification on iPhone/iPad and Android devices.
Dimensions (HxWxD) and weight Approvals	124 x 91 x 100 mm, 350 g, camera body only
	EMC - CE, FCC Part 15 Subpart B Class B
	Wireless RF - CE, FCC Part 15 Subpart C
	Power supply: CE, FCC, UL, EN 60950
Operating conditions	0-50 °C, Humidity 20 – 80% RH (non-condensing)