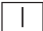




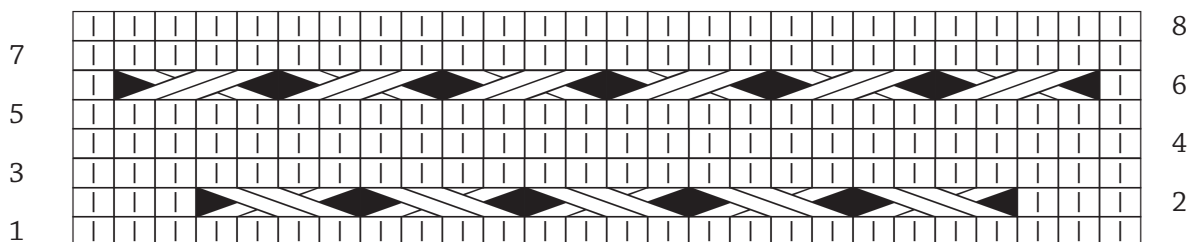
### Abbreviations and key to chart

 Knit on RS, purl on WS

 2/2 RC (2/2 Right Cross): Slip next 2 sts to cable needle and hold at back of work, k2, then k2 from cable needle

 2/2 LC (2/2 Left Cross): Slip next 2 sts to cable needle and hold at front of work, k2, then k2 from cable needle

### Chart



### Pattern

Row 1 and all other WS rows: Purl

Row 2: K3, (2/2LC) five times, k3

Rows 4 and 8: Knit

Row 6: K1, (2/2 RC) six times, k1