

P-1350-130 Pinout

J6 Amplifier Power

- Pin 1 130 Vdc
- Pin 2 130 Vdc
- Pin 3 GND
- Pin 4 GND
- Pin 5 +15 Vdc
- Pin 6 -15 Vdc
- Pin 7 +5 Vdc
- Pin 8 -5 Vdc
- Pin 9 AGND

J7 Preamp Power

- Pin 1 +15 Vdc
- Pin 2 -15 Vdc
- Pin 3 AGND
- Pin 4 AGND
- Pin 5 +24 Vdc

J3 Remote Shutdown

- Pin 1 Aux Supply
- Pin 2 N_Shutdown
- Pin 3 AGND

J2 Temp Output

- Pin 1 +15 Vdc
- Pin 2 AGND
- Pin 3 Temp

Header and Connector Mate:

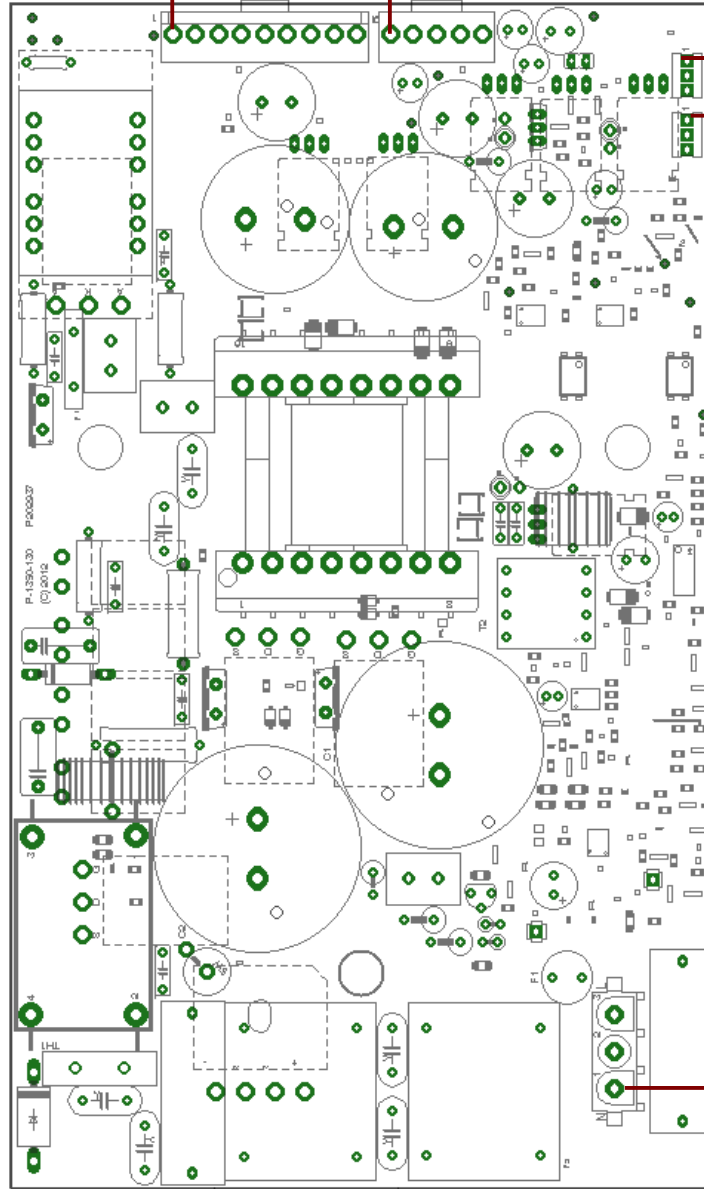
J1: Tyco AMP: 350789-1
 Mate: Tyco AMP: 1-480700-0
 Socket: Tyco Amp: 350550-1

J2: Molex: 22-23-2031
 Mate: Molex: 0022013037
 Socket: Molex: 0008500113

J3: Molex: 22-23-2031
 Mate: Molex: 0022013037
 Socket: Molex: 0008500113

J6: JST: B9P-VH(LF)(SN)
 Mate: JST: VHR-9N
 Socket: JST: SVH-41T-P1.1

J7: JST: B5P-VH(LF)(SN)
 Mate: JST: VHR-5N
 Socket: JST: SVH-41T-P1.1



J1 AC INPUT

- Pin 1 Neutral
- Pin 2 Earth
- Pin 3 Line